

# Great Western

Well Name: **Postle IC 11-042HC**  
 Surface Location: Postle West Pad Sec.11-T3N-R68W  
 North American Datum 1983, US State Plane 1983, Colorado Northern Zone  
 Ground Elevation: 4976.9  
 Slot  
 +N/-S +E/-W Northing Easting Longitude  
 0.0 0.0 1332148.27 3145665.64 40.243969 -104.978181  
 RKB - 16.5' WELL @ 4993.4ft (RKB - 16.5')

## WELLBORE TARGET DETAILS

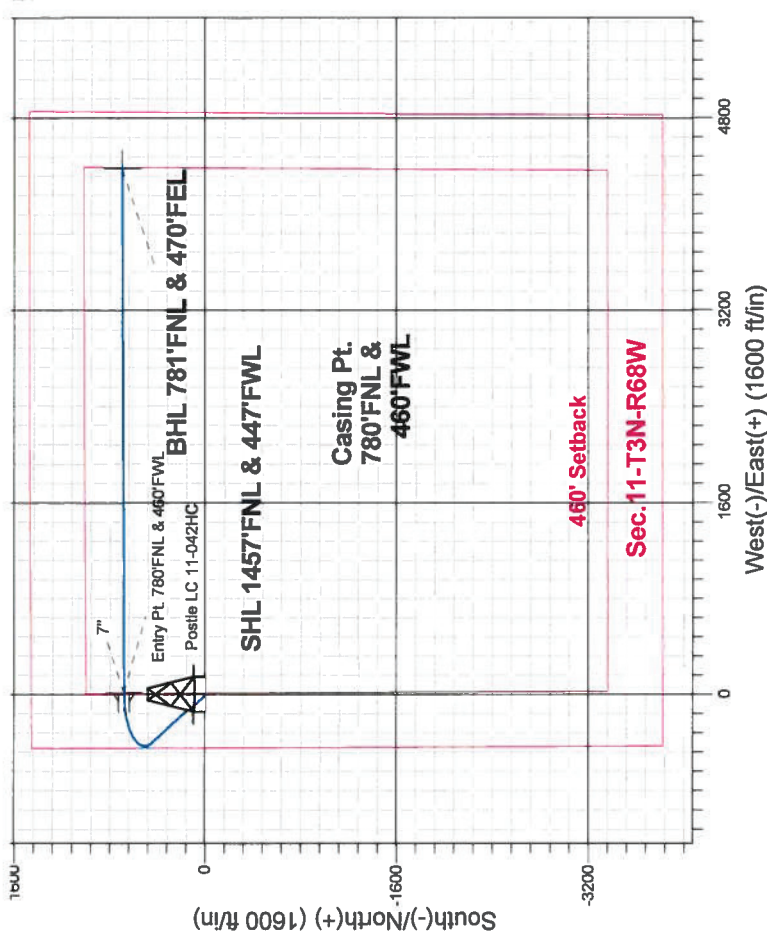
Name	TVD	+N/-S	+E/-W	Shape
SHL 1457'FNL & 447'FWL	1.0	0.0	0.0	Point
BHL 781'FNL & 470'FEL	7321.4	697.7	4379.1	Point
Entry Pt. 780'FNL & 460'FWL	7321.4	677.2	9.5	Point

Postle West Pad Sec.11-T3N-R68W  
 Postle IC 11-042HC  
 Plan #1 (12-10-13)  
 9:10, December 12 2013

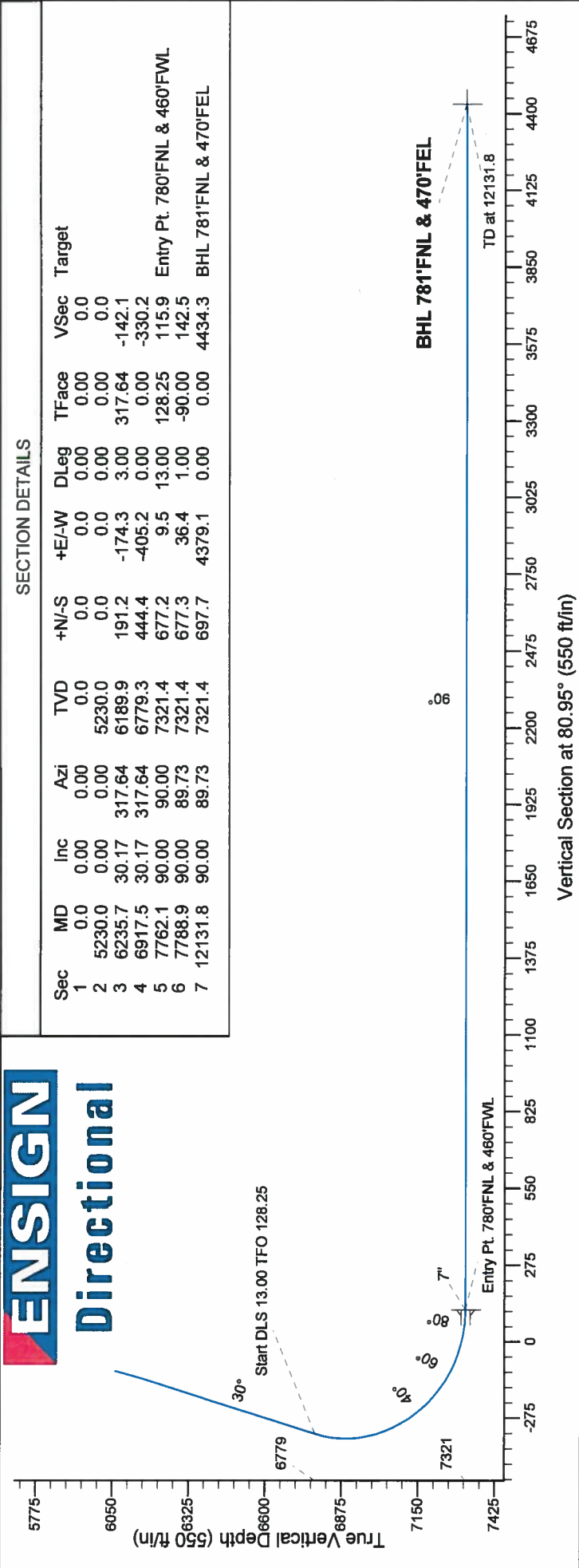
Azimuths to True North  
 Magnetic North: 8.63°  
 Strength: 52763.4sn T  
 Dip Angle: 66.80°  
 Date: 12/10/2013  
 Model: IGRF2010

## ANNOTATIONS

TVD MD Azimuth  
 5230.0 5230.0 KOP - Start Build 3.00  
 6779.3 6917.5 Start DLS 13.00 TFO 128.25  
 7321.4 12131.8 TD at 12131.8



# ENSIGN Directional



### SECTION DETAILS

Sec	MD	Inc	Azi	TVD	+N/-S	+E/-W	DLeg	TFace	VSec	Target
1	0.0	0.00	0.00	0.0	0.0	0.0	0.00	0.00	0.0	
2	5230.0	0.00	0.00	5230.0	0.0	0.0	0.00	0.00	0.0	
3	6235.7	30.17	317.64	6189.9	191.2	-174.3	3.00	317.64	-142.1	
4	6917.5	30.17	317.64	6779.3	444.4	-405.2	0.00	0.00	-330.2	Entry Pt. 780'FNL & 460'FWL
5	7762.1	90.00	90.00	7321.4	677.2	9.5	13.00	128.25	115.9	
6	7788.9	90.00	89.73	7321.4	677.3	36.4	1.00	-90.00	142.5	
7	12131.8	90.00	89.73	7321.4	697.7	4379.1	0.00	0.00	4434.3	BHL 781'FNL & 470'FEL

Vertical Section at 80.95° (550 ft/m)



## **Directional**

### **Great Western**

**SEC.11-T3N-R68W**

**Postle West Pad Sec.11-T3N-R68W**

**Postle IC 11-042HC**

**Wellbore #1**

**Plan: Plan #1 (12-10-13)**

## **Standard Planning Report**

**12 December, 2013**

<b>Database:</b>	Landmark	<b>Local Co-ordinate Reference:</b>	Well Postle IC 11-042HC
<b>Company:</b>	Great Western	<b>TVD Reference:</b>	WELL @ 4993.4ft (RKB - 16.5')
<b>Project:</b>	SEC.11-T3N-R68W	<b>MD Reference:</b>	WELL @ 4993.4ft (RKB - 16.5')
<b>Site:</b>	Postle West Pad Sec.11-T3N-R68W	<b>North Reference:</b>	True
<b>Well:</b>	Postle IC 11-042HC	<b>Survey Calculation Method:</b>	Minimum Curvature
<b>Wellbore:</b>	Wellbore #1		
<b>Design:</b>	Plan #1 (12-10-13)		

<b>Project</b>	SEC.11-T3N-R68W, Weld County, CO		
<b>Map System:</b>	US State Plane 1983	<b>System Datum:</b>	Mean Sea Level
<b>Geo Datum:</b>	North American Datum 1983		Using Well Reference Point
<b>Map Zone:</b>	Colorado Northern Zone		Using geodetic scale factor

<b>Site</b>	Postle West Pad Sec.11-T3N-R68W				
<b>Site Position:</b>		<b>Northing:</b>	1,332,143.74 ft	<b>Latitude:</b>	40.243958
<b>From:</b>	Lat/Long	<b>Easting:</b>	3,145,575.78 ft	<b>Longitude:</b>	-104.978503
<b>Position Uncertainty:</b>	0.0 ft	<b>Slot Radius:</b>	"	<b>Grid Convergence:</b>	0.34 °

<b>Well</b>	Postle IC 11-042HC					
<b>Well Position</b>	<b>+N/-S</b>	4.0 ft	<b>Northing:</b>	1,332,148.27 ft	<b>Latitude:</b>	40.243969
	<b>+E/-W</b>	89.9 ft	<b>Easting:</b>	3,145,665.64 ft	<b>Longitude:</b>	-104.978181
<b>Position Uncertainty</b>		0.0 ft	<b>Wellhead Elevation:</b>	ft	<b>Ground Level:</b>	4,976.9 ft

<b>Wellbore</b>	Wellbore #1			
-----------------	-------------	--	--	--

Magnetics	Model Name	Sample Date	Declination (°)	Dip Angle (°)	Field Strength (nT)
	IGRF2010	12/10/2013	8.63	66.80	52,763

<b>Design</b>	Plan #1 (12-10-13)			
---------------	--------------------	--	--	--

<b>Audit Notes:</b>				
<b>Version:</b>	<b>Phase:</b>	PROTOTYPE	<b>Tie On Depth:</b>	0.0

Vertical Section:	Depth From (TVD) (ft)	+N/-S (ft)	+E/-W (ft)	Direction (°)
	0.0	0.0	0.0	80.95

<b>Plan Sections</b>										
----------------------	--	--	--	--	--	--	--	--	--	--

Measured Depth (ft)	Inclination (°)	Azimuth (°)	Vertical Depth (ft)	+N/-S (ft)	+E/-W (ft)	Dogleg Rate (°/100ft)	Build Rate (°/100ft)	Turn Rate (°/100ft)	TFO (°)	Target
0.0	0.00	0.00	0.0	0.0	0.0	0.00	0.00	0.00	0.00	
5,230.0	0.00	0.00	5,230.0	0.0	0.0	0.00	0.00	0.00	0.00	
6,235.7	30.17	317.64	6,189.9	191.2	-174.3	3.00	3.00	0.00	317.64	
6,917.5	30.17	317.64	6,779.3	444.4	-405.2	0.00	0.00	0.00	0.00	
7,762.1	90.00	90.00	7,321.4	677.2	9.5	13.00	7.08	15.67	128.25	Entry Pt. 780°FNL 8
7,788.9	90.00	89.73	7,321.4	677.3	36.4	1.00	0.00	-1.00	-90.00	
12,131.8	90.00	89.73	7,321.4	697.7	4,379.1	0.00	0.00	0.00	0.00	BHL 781°FNL & 47C

<b>Database:</b>	Landmark	<b>Local Co-ordinate Reference:</b>	Well Postle IC 11-042HC
<b>Company:</b>	Great Western	<b>TVD Reference:</b>	WELL @ 4993.4ft (RKB - 16.5')
<b>Project:</b>	SEC.11-T3N-R68W	<b>MD Reference:</b>	WELL @ 4993.4ft (RKB - 16.5')
<b>Site:</b>	Postle West Pad Sec.11-T3N-R68W	<b>North Reference:</b>	True
<b>Well:</b>	Postle IC 11-042HC	<b>Survey Calculation Method:</b>	Minimum Curvature
<b>Wellbore:</b>	Wellbore #1		
<b>Design:</b>	Plan #1 (12-10-13)		

#### Planned Survey

Measured Depth (ft)	Inclination (°)	Azimuth (°)	Vertical Depth (ft)	+N/-S (ft)	+E/-W (ft)	Vertical Section (ft)	Dogleg Rate (°/100ft)	Build Rate (°/100ft)	Turn Rate (°/100ft)
0.0	0.00	0.00	0.0	0.0	0.0	0.0	0.00	0.00	0.00
1.0	0.00	0.00	1.0	0.0	0.0	0.0	0.00	0.00	0.00
<b>SHL 1457'FNL &amp; 447'FWL</b>									
100.0	0.00	0.00	100.0	0.0	0.0	0.0	0.00	0.00	0.00
200.0	0.00	0.00	200.0	0.0	0.0	0.0	0.00	0.00	0.00
300.0	0.00	0.00	300.0	0.0	0.0	0.0	0.00	0.00	0.00
400.0	0.00	0.00	400.0	0.0	0.0	0.0	0.00	0.00	0.00
500.0	0.00	0.00	500.0	0.0	0.0	0.0	0.00	0.00	0.00
600.0	0.00	0.00	600.0	0.0	0.0	0.0	0.00	0.00	0.00
700.0	0.00	0.00	700.0	0.0	0.0	0.0	0.00	0.00	0.00
800.0	0.00	0.00	800.0	0.0	0.0	0.0	0.00	0.00	0.00
900.0	0.00	0.00	900.0	0.0	0.0	0.0	0.00	0.00	0.00
1,000.0	0.00	0.00	1,000.0	0.0	0.0	0.0	0.00	0.00	0.00
1,100.0	0.00	0.00	1,100.0	0.0	0.0	0.0	0.00	0.00	0.00
1,200.0	0.00	0.00	1,200.0	0.0	0.0	0.0	0.00	0.00	0.00
1,300.0	0.00	0.00	1,300.0	0.0	0.0	0.0	0.00	0.00	0.00
1,400.0	0.00	0.00	1,400.0	0.0	0.0	0.0	0.00	0.00	0.00
1,500.0	0.00	0.00	1,500.0	0.0	0.0	0.0	0.00	0.00	0.00
1,600.0	0.00	0.00	1,600.0	0.0	0.0	0.0	0.00	0.00	0.00
1,700.0	0.00	0.00	1,700.0	0.0	0.0	0.0	0.00	0.00	0.00
1,800.0	0.00	0.00	1,800.0	0.0	0.0	0.0	0.00	0.00	0.00
1,900.0	0.00	0.00	1,900.0	0.0	0.0	0.0	0.00	0.00	0.00
2,000.0	0.00	0.00	2,000.0	0.0	0.0	0.0	0.00	0.00	0.00
2,100.0	0.00	0.00	2,100.0	0.0	0.0	0.0	0.00	0.00	0.00
2,200.0	0.00	0.00	2,200.0	0.0	0.0	0.0	0.00	0.00	0.00
2,300.0	0.00	0.00	2,300.0	0.0	0.0	0.0	0.00	0.00	0.00
2,400.0	0.00	0.00	2,400.0	0.0	0.0	0.0	0.00	0.00	0.00
2,500.0	0.00	0.00	2,500.0	0.0	0.0	0.0	0.00	0.00	0.00
2,600.0	0.00	0.00	2,600.0	0.0	0.0	0.0	0.00	0.00	0.00
2,700.0	0.00	0.00	2,700.0	0.0	0.0	0.0	0.00	0.00	0.00
2,800.0	0.00	0.00	2,800.0	0.0	0.0	0.0	0.00	0.00	0.00
2,900.0	0.00	0.00	2,900.0	0.0	0.0	0.0	0.00	0.00	0.00
3,000.0	0.00	0.00	3,000.0	0.0	0.0	0.0	0.00	0.00	0.00
3,100.0	0.00	0.00	3,100.0	0.0	0.0	0.0	0.00	0.00	0.00
3,200.0	0.00	0.00	3,200.0	0.0	0.0	0.0	0.00	0.00	0.00
3,300.0	0.00	0.00	3,300.0	0.0	0.0	0.0	0.00	0.00	0.00
3,400.0	0.00	0.00	3,400.0	0.0	0.0	0.0	0.00	0.00	0.00
3,500.0	0.00	0.00	3,500.0	0.0	0.0	0.0	0.00	0.00	0.00
3,600.0	0.00	0.00	3,600.0	0.0	0.0	0.0	0.00	0.00	0.00
3,700.0	0.00	0.00	3,700.0	0.0	0.0	0.0	0.00	0.00	0.00
3,800.0	0.00	0.00	3,800.0	0.0	0.0	0.0	0.00	0.00	0.00
3,900.0	0.00	0.00	3,900.0	0.0	0.0	0.0	0.00	0.00	0.00
4,000.0	0.00	0.00	4,000.0	0.0	0.0	0.0	0.00	0.00	0.00
4,100.0	0.00	0.00	4,100.0	0.0	0.0	0.0	0.00	0.00	0.00
4,200.0	0.00	0.00	4,200.0	0.0	0.0	0.0	0.00	0.00	0.00
4,300.0	0.00	0.00	4,300.0	0.0	0.0	0.0	0.00	0.00	0.00
4,400.0	0.00	0.00	4,400.0	0.0	0.0	0.0	0.00	0.00	0.00
4,500.0	0.00	0.00	4,500.0	0.0	0.0	0.0	0.00	0.00	0.00
4,600.0	0.00	0.00	4,600.0	0.0	0.0	0.0	0.00	0.00	0.00
4,700.0	0.00	0.00	4,700.0	0.0	0.0	0.0	0.00	0.00	0.00
4,800.0	0.00	0.00	4,800.0	0.0	0.0	0.0	0.00	0.00	0.00
4,900.0	0.00	0.00	4,900.0	0.0	0.0	0.0	0.00	0.00	0.00
5,000.0	0.00	0.00	5,000.0	0.0	0.0	0.0	0.00	0.00	0.00
5,100.0	0.00	0.00	5,100.0	0.0	0.0	0.0	0.00	0.00	0.00

<b>Database:</b>	Landmark	<b>Local Co-ordinate Reference:</b>	Well Postle IC 11-042HC
<b>Company:</b>	Great Western	<b>TVD Reference:</b>	WELL @ 4993.4ft (RKB - 16.5')
<b>Project:</b>	SEC.11-T3N-R68W	<b>MD Reference:</b>	WELL @ 4993.4ft (RKB - 16.5')
<b>Site:</b>	Postle West Pad Sec.11-T3N-R68W	<b>North Reference:</b>	True
<b>Well:</b>	Postle IC 11-042HC	<b>Survey Calculation Method:</b>	Minimum Curvature
<b>Wellbore:</b>	Wellbore #1		
<b>Design:</b>	Plan #1 (12-10-13)		

#### Planned Survey

Measured Depth (ft)	Inclination (°)	Azimuth (°)	Vertical Depth (ft)	+N/-S (ft)	+E/-W (ft)	Vertical Section (ft)	Dogleg Rate (°/100ft)	Bulld Rate (°/100ft)	Turn Rate (°/100ft)	
5,200.0	0.00	0.00	5,200.0	0.0	0.0	0.0	0.00	0.00	0.00	
5,230.0	0.00	0.00	5,230.0	0.0	0.0	0.0	0.00	0.00	0.00	
<b>KOP - Start Build 3.00</b>										
5,300.0	2.10	317.64	5,300.0	0.9	-0.9	-0.7	3.00	3.00	0.00	
5,400.0	5.10	317.64	5,399.8	5.6	-5.1	-4.2	3.00	3.00	0.00	
5,500.0	8.10	317.64	5,499.1	14.1	-12.8	-10.5	3.00	3.00	0.00	
5,600.0	11.10	317.64	5,597.7	26.4	-24.1	-19.6	3.00	3.00	0.00	
5,700.0	14.10	317.64	5,695.3	42.5	-38.8	-31.6	3.00	3.00	0.00	
5,800.0	17.10	317.64	5,791.6	62.4	-56.9	-46.4	3.00	3.00	0.00	
5,900.0	20.10	317.64	5,886.3	86.0	-78.4	-63.9	3.00	3.00	0.00	
6,000.0	23.10	317.64	5,979.3	113.2	-103.2	-84.1	3.00	3.00	0.00	
6,100.0	26.10	317.64	6,070.2	143.9	-131.2	-106.9	3.00	3.00	0.00	
6,200.0	29.10	317.64	6,158.8	178.1	-162.4	-132.4	3.00	3.00	0.00	
6,235.7	30.17	317.64	6,189.9	191.2	-174.3	-142.1	3.00	3.00	0.00	
6,300.0	30.17	317.64	6,245.5	215.1	-196.1	-159.8	0.00	0.00	0.00	
6,400.0	30.17	317.64	6,331.9	252.2	-230.0	-187.4	0.00	0.00	0.00	
6,500.0	30.17	317.64	6,418.4	289.3	-263.8	-215.0	0.00	0.00	0.00	
6,600.0	30.17	317.64	6,504.8	326.5	-297.7	-242.6	0.00	0.00	0.00	
6,700.0	30.17	317.64	6,591.3	363.6	-331.6	-270.2	0.00	0.00	0.00	
6,800.0	30.17	317.64	6,677.7	400.7	-365.4	-297.8	0.00	0.00	0.00	
6,900.0	30.17	317.64	6,764.2	437.9	-399.3	-325.4	0.00	0.00	0.00	
6,917.5	30.17	317.64	6,779.3	444.4	-405.2	-330.2	0.00	0.00	0.00	
<b>Start DLS 13.00 TFO 128.25</b>										
7,000.0	24.86	337.98	6,852.6	475.9	-425.7	-345.6	13.00	-6.44	24.65	
7,100.0	23.56	9.87	6,944.2	515.2	-430.2	-343.8	13.00	-1.30	31.90	
7,200.0	28.48	37.64	7,034.4	553.9	-412.1	-319.9	13.00	4.92	27.77	
7,300.0	37.22	55.57	7,118.5	590.1	-372.5	-275.0	13.00	8.75	17.93	
7,400.0	47.72	67.01	7,192.3	621.8	-313.2	-211.5	13.00	10.50	11.44	
7,500.0	59.02	75.05	7,251.9	647.4	-237.4	-132.6	13.00	11.30	8.05	
7,600.0	70.71	81.35	7,294.3	665.6	-149.0	-42.4	13.00	11.69	6.30	
7,700.0	82.59	86.80	7,317.4	675.5	-52.4	54.6	13.00	11.88	5.44	
7,762.1	90.00	90.00	7,321.4	677.2	9.5	115.9	13.00	11.93	5.16	
<b>7" - Entry Pt. 780'FNL &amp; 460'FWL</b>										
7,788.9	90.00	89.73	7,321.4	677.3	36.4	142.5	1.00	0.01	-1.00	
7,800.0	90.00	89.73	7,321.4	677.4	47.4	153.4	0.00	0.00	0.00	
7,900.0	90.00	89.73	7,321.4	677.8	147.4	252.2	0.00	0.00	0.00	
8,000.0	90.00	89.73	7,321.4	678.3	247.4	351.0	0.00	0.00	0.00	
8,100.0	90.00	89.73	7,321.4	678.8	347.4	449.9	0.00	0.00	0.00	
8,200.0	90.00	89.73	7,321.4	679.2	447.4	548.7	0.00	0.00	0.00	
8,300.0	90.00	89.73	7,321.4	679.7	547.4	647.5	0.00	0.00	0.00	
8,400.0	90.00	89.73	7,321.4	680.2	647.4	746.4	0.00	0.00	0.00	
8,500.0	90.00	89.73	7,321.4	680.6	747.4	845.2	0.00	0.00	0.00	
8,600.0	90.00	89.73	7,321.4	681.1	847.4	944.0	0.00	0.00	0.00	
8,700.0	90.00	89.73	7,321.4	681.6	947.4	1,042.8	0.00	0.00	0.00	
8,800.0	90.00	89.73	7,321.4	682.0	1,047.4	1,141.7	0.00	0.00	0.00	
8,900.0	90.00	89.73	7,321.4	682.5	1,147.4	1,240.5	0.00	0.00	0.00	
9,000.0	90.00	89.73	7,321.4	683.0	1,247.4	1,339.3	0.00	0.00	0.00	
9,100.0	90.00	89.73	7,321.4	683.5	1,347.4	1,438.1	0.00	0.00	0.00	
9,200.0	90.00	89.73	7,321.4	683.9	1,447.4	1,537.0	0.00	0.00	0.00	
9,300.0	90.00	89.73	7,321.4	684.4	1,547.4	1,635.8	0.00	0.00	0.00	
9,400.0	90.00	89.73	7,321.4	684.9	1,647.4	1,734.6	0.00	0.00	0.00	
9,500.0	90.00	89.73	7,321.4	685.3	1,747.4	1,833.5	0.00	0.00	0.00	
9,600.0	90.00	89.73	7,321.4	685.8	1,847.4	1,932.3	0.00	0.00	0.00	

<b>Database:</b>	Landmark	<b>Local Co-ordinate Reference:</b>	Well PostleIC 11-042HC
<b>Company:</b>	Great Western	<b>TVD Reference:</b>	WELL @ 4993.4ft (RKB - 16.5')
<b>Project:</b>	SEC.11-T3N-R68W	<b>MD Reference:</b>	WELL @ 4993.4ft (RKB - 16.5')
<b>Site:</b>	Postle West Pad Sec.11-T3N-R68W	<b>North Reference:</b>	True
<b>Well:</b>	PostleIC 11-042HC	<b>Survey Calculation Method:</b>	Minimum Curvature
<b>Wellbore:</b>	Wellbore #1		
<b>Design:</b>	Plan #1 (12-10-13)		

**Planned Survey**

Measured Depth (ft)	Inclination (°)	Azimuth (°)	Vertical Depth (ft)	+N/-S (ft)	+E/-W (ft)	Vertical Section (ft)	Dogleg Rate (°/100ft)	Build Rate (°/100ft)	Turn Rate (°/100ft)
9,700.0	90.00	89.73	7,321.4	686.3	1,947.4	2,031.1	0.00	0.00	0.00
9,800.0	90.00	89.73	7,321.4	686.7	2,047.4	2,129.9	0.00	0.00	0.00
9,900.0	90.00	89.73	7,321.4	687.2	2,147.4	2,228.8	0.00	0.00	0.00
10,000.0	90.00	89.73	7,321.4	687.7	2,247.4	2,327.6	0.00	0.00	0.00
10,100.0	90.00	89.73	7,321.4	688.1	2,347.4	2,426.4	0.00	0.00	0.00
10,200.0	90.00	89.73	7,321.4	688.6	2,447.4	2,525.2	0.00	0.00	0.00
10,300.0	90.00	89.73	7,321.4	689.1	2,547.4	2,624.1	0.00	0.00	0.00
10,400.0	90.00	89.73	7,321.4	689.6	2,647.4	2,722.9	0.00	0.00	0.00
10,500.0	90.00	89.73	7,321.4	690.0	2,747.4	2,821.7	0.00	0.00	0.00
10,600.0	90.00	89.73	7,321.4	690.5	2,847.4	2,920.6	0.00	0.00	0.00
10,700.0	90.00	89.73	7,321.4	691.0	2,947.4	3,019.4	0.00	0.00	0.00
10,800.0	90.00	89.73	7,321.4	691.4	3,047.4	3,118.2	0.00	0.00	0.00
10,900.0	90.00	89.73	7,321.4	691.9	3,147.4	3,217.0	0.00	0.00	0.00
11,000.0	90.00	89.73	7,321.4	692.4	3,247.4	3,315.9	0.00	0.00	0.00
11,100.0	90.00	89.73	7,321.4	692.8	3,347.4	3,414.7	0.00	0.00	0.00
11,200.0	90.00	89.73	7,321.4	693.3	3,447.4	3,513.5	0.00	0.00	0.00
11,300.0	90.00	89.73	7,321.4	693.8	3,547.4	3,612.3	0.00	0.00	0.00
11,400.0	90.00	89.73	7,321.4	694.2	3,647.4	3,711.2	0.00	0.00	0.00
11,500.0	90.00	89.73	7,321.4	694.7	3,747.4	3,810.0	0.00	0.00	0.00
11,600.0	90.00	89.73	7,321.4	695.2	3,847.4	3,908.8	0.00	0.00	0.00
11,700.0	90.00	89.73	7,321.4	695.6	3,947.4	4,007.7	0.00	0.00	0.00
11,800.0	90.00	89.73	7,321.4	696.1	4,047.4	4,106.5	0.00	0.00	0.00
11,900.0	90.00	89.73	7,321.4	696.6	4,147.4	4,205.3	0.00	0.00	0.00
12,000.0	90.00	89.73	7,321.4	697.1	4,247.4	4,304.1	0.00	0.00	0.00
12,100.0	90.00	89.73	7,321.4	697.5	4,347.4	4,403.0	0.00	0.00	0.00
12,131.8	90.00	89.73	7,321.4	697.7	4,379.1	4,434.3	0.00	0.00	0.00

BHL 781'FNL & 470'FEL

**Casing Points**

Measured Depth (ft)	Vertical Depth (ft)	Name	Casing Diameter (")	Hole Diameter (")
7,762.1	7,321.4	7"	7	7-1/2

**Plan Annotations**

Measured Depth (ft)	Vertical Depth (ft)	Local Coordinates		Comment
		+N/-S (ft)	+E/-W (ft)	
5,230.0	5,230.0	0.0	0.0	KOP - Start Build 3.00
6,917.5	6,779.3	444.4	-405.2	Start DLS 13.00 TFO 128.25
12,131.8	7,321.4	697.7	4,379.2	TD at 12131.8