

# HALLIBURTON

iCem<sup>®</sup> Service

## **CAERUS OIL AND GAS LLC - EBUS**

**For: GEORGE URBAN**

Date: Wednesday, November 18, 2015

### **11B-12 D Surface PJR**

PUCKETT

902911369

Job Date: Wednesday, November 18, 2015

Sincerely,

**Grand Junction Cement Engineering**

## 1.0 Real-Time Job Summary

## 1.1 Job Event Log

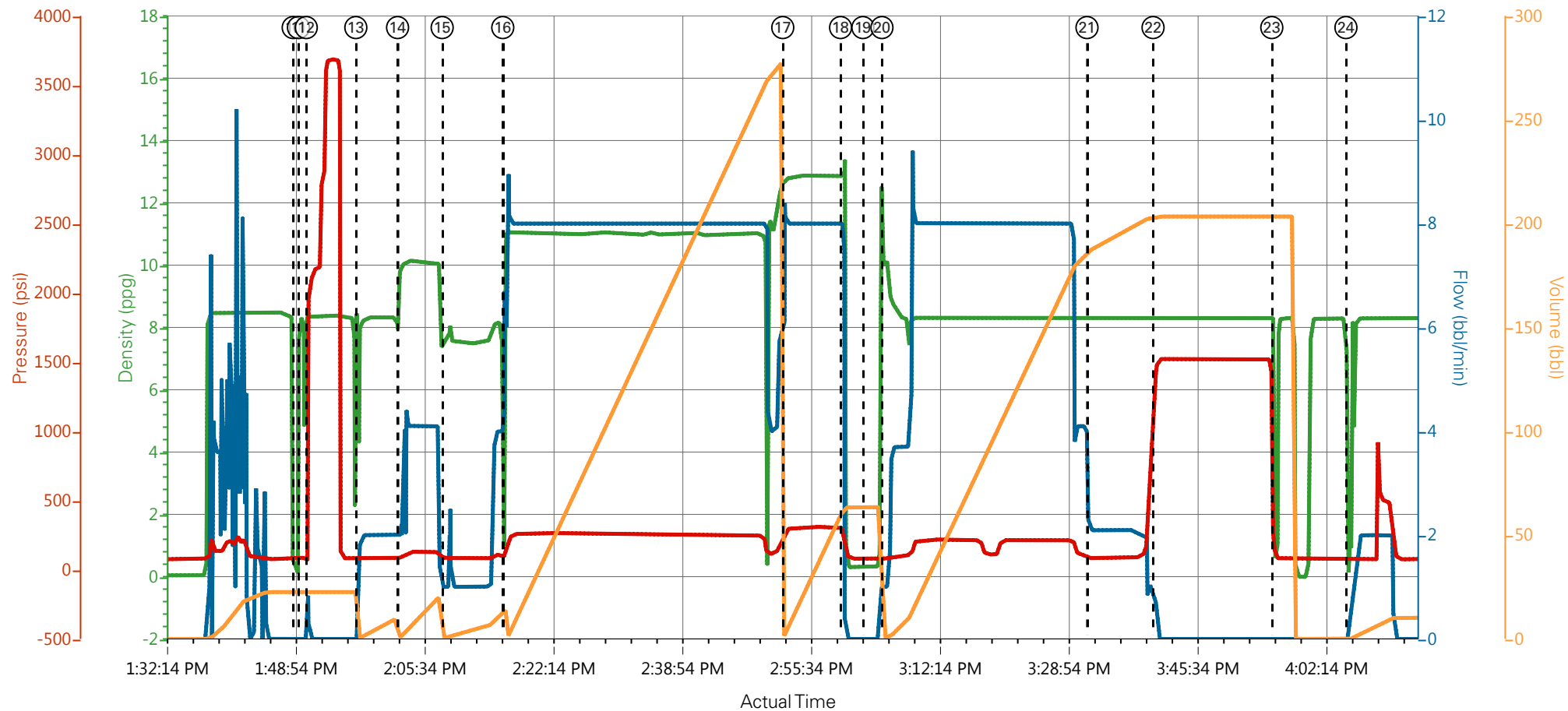
Type	Seq. No.	Activity	Date	Time	Source	DH Density (ppg)	Comb Pump Rate (bbl/min)	PS Pump Press (psi)	Pump Stg Tot (bbl)	Comments
Event	1	Call Out	11/18/2015	05:00:00	USER					REQUESTED ON LOCATION @ 11:00
Event	2	Pre-Convoy Safety Meeting	11/18/2015	07:45:00	USER					ALL HES PRESENT
Event	3	Crew Leave Yard	11/18/2015	08:00:00	USER					1-ELITE PUMP, 1-660, 1-SUPERFLUSH, AND 1 550 PU. ALL TRUCKS LEFT TOGETHER
Event	4	Arrive At Loc	11/18/2015	12:00:00	USER					ARRIVED AN HOUR LATE DUE TO HAVING TO CHAIN UP AND THE PUMP GETTING STUCK AND HAVING TO WAIT FOR A SECOND BLADE DUE TO THE FIRST ONE NOT BEING ABLE TO PULL HIM UP.
Event	5	Assessment Of Location Safety Meeting	11/18/2015	12:15:00	USER					DID A WALK AROUND OF LOCATION AND FILLED OUT JSA. GOT TRUCKS SPOTTED IN RIGHT AWAY THEN MET WITH CO REP AND WENT OVER NUMBERS AND JOB PROCEDURE. COLLECTED WATER SAMPLE ( PH - 7, CHL - 0, TEMP - 42 F)
Event	6	Other	11/18/2015	12:20:00	USER					RECIEVED SDS
Event	7	Pre-Rig Up Safety Meeting	11/18/2015	12:30:00	USER					ALL HES PRESENT
Event	8	Rig-Up Equipment	11/18/2015	12:45:00	USER					
Event	9	Pre-Job Safety Meeting	11/18/2015	13:15:00	USER	0.04	0.00	74.00	0.0	FILLED OUT RIG FLOOR JSA AND MET WITH RIG CREW. ALL HES PRESENT
Event	10	Start Job	11/18/2015	13:49:00	COM5	0.22	0.00	74.00	22.6	TD 2554', TP 2526', SJ 39.85', OH 14.75", CASING 9.625" 36# J-55, MW 9.1
Event	11	Prime Pumps	11/18/2015	13:49:40	COM5	8.32	0.00	93.00	22.6	2 BBLS FRESH WATER
Event	12	Test Lines	11/18/2015	13:50:41	COM5	8.34	0.00	2011.00	22.6	TESTED TO 3600 PSI. TESTED GOOD KO'S FUNCTIONING
Event	13	Pump Spacer 1	11/18/2015	13:57:06	COM5	7.61	1.80	79.00	0.3	10 BBLS FRESH WATER
Event	14	Pump Spacer 2	11/18/2015	14:02:30	COM5	10.15	2.10	90.00	1.1	20 BBLS SUPERFLUSH

Event	15	Pump Spacer 1	11/18/2015	14:08:16	COM5	7.60	1.00	83.00	0.7	10 BBLS FRESH WATER
Event	16	Pump Lead Cement	11/18/2015	14:16:06	COM5	11.03	6.00	159.00	14.6	375 SKS (243.8 BBLS) 11 PPG, 3.65 FT3/SK, 23.08 GAL/SK
Event	17	Pump Tail Cement	11/18/2015	14:52:20	COM5	12.77	8.00	284.00	3.9	160 SKS (62.1 BBLS) 12.8 PPG, 2.18 FT3/SK, 12.11 GAL/SK
Event	18	Shutdown	11/18/2015	14:59:49	USER	12.92	5.00	279.00	63.4	END OF CEMENT
Event	19	Drop Top Plug	11/18/2015	15:02:42	COM5	0.29	0.00	78.00	63.4	PLUG WENT
Event	20	Pump Displacement	11/18/2015	15:05:10	COM5	9.96	1.00	79.00	0.5	192.2 BBLS FRESH WATER
Event	21	Slow Rate	11/18/2015	15:31:42	USER	8.29	2.10	81.00	187.3	SLOWED TO 2 BBLS/MIN TO LAND PLUG
Event	22	Bump Plug	11/18/2015	15:40:15	COM5	8.34	0.00	1485.00	203.4	LANDED ABOUT 160 PSI BROUGHT IT UP TO 1520 PSI FOR CASING TEST
Event	23	Check Floats	11/18/2015	15:55:36	USER	0.65	0.00	103.00	203.4	FLOATS HELD
Event	24	Other	11/18/2015	16:05:12	USER	0.75	0.00	76.00	0.0	10 BBLS SUGAR WATER PRESSURED UP TO 960 PSI @ 6.5 BBLS GONE THEN DOWN TO 480PSI FOR THE REMAINING
Event	25	Pump Cement	11/18/2015	20:02:16	COM5	12.37	2.00	79.00	0.9	287 SKS (108.4BBLS) 12.8 PPG 2.12 FT3/SK, 11.15 GAL/SK 20 BBLS SUPERFLUSH IN THE FIRST 150 SKS PER CO REP. (4 HOUR WAIT)
Event	26	Shutdown	11/18/2015	20:35:43	USER	12.82	0.00	110.00	124.2	END OF CEMENT. NO CEMENT TO SURFACE
Event	27	Pump Cement	11/18/2015	21:02:11	USER	7.19	1.30	72.00	0.5	460 SKS (94 BBLS) 15.8 PPG, 1.15 FT3/SK, 5 GAL/SK, TYPE I/II CEMENT WITH CALCIUM CHLORIDE ADDED AT .1 GAL PER SACK. (NO WAIT, PUMP ALL TYPE I/II PER CO REP)
Event	28	Shutdown	11/18/2015	21:34:37	USER	15.20	3.00	165.00	93.5	END OF CEMENT. NO CEMENT TO SURFACE. CALLED FOR 500 SKS TYPE I/II
Event	29	Pump Cement	11/19/2015	05:40:26	USER	-0.03	0.00	-1.00	0.0	500 SKS (102.4 BBLS) 15.8 PPG, 1.15 FT3/SK, 5 GAL/SK, TYPE I/II CEMENT WITH CALCIUM CHLORIDE ADDED AT .1 GAL PER SACK.
Event	30	Shutdown	11/19/2015	06:18:07	USER	15.70	0.00	1.00	104.5	END OF CEMENT NO RETURNS, TAGGED ABOUT 120' DOWN. CALLED FOR ANOTHER 500 SKS TYPE I/II
Event	31	Pump Cement	11/19/2015	13:20:41	USER	3.17	1.00	8.00	0.6	500 SKS (102.4 BBLS) 15.8 PPG, 1.15 FT3/SK, 5 GAL/SK, TYPE I/II CEMENT WITH CALCIUM CHLORIDE ADDED AT .1 GAL PER SACK.
Event	32	Shutdown	11/19/2015	13:54:16	USER	10.56	2.20	57.00	93.5	END OF CEMENT NO RETURNS, TAGGED AT 120' DOWN,

CALLED FOR 300 SKS REVERCEM ANNULAR FILL TRUCK.  
SUPERFLUSH AND 500 SKS TYPE I/II TOP OUT

Event	33	Pump Spacer	11/20/2015	00:57:44	USER	8.07	0.90	2.00	0.3	PUMPED 3 BBLS WATER WITH CALCIUM CHLORIDE, FOLLOWED BY 3 BBLS FRESH WATER SPACER
Event	34	Pump Cement	11/20/2015	01:02:32	COM5	6.88	1.90	6.00	2.7	38 SKS (14.4 BBLS) 12.8 PPG, 2.12 FT3/SK, 11.15 GAL/SK
Event	35	Shutdown	11/20/2015	01:05:39	USER	12.10	0.00	86.00	12.2	CEMENT TO SURFACE NOT FALLING BACK
Event	36	End Job	11/20/2015	01:08:00	USER	14.03	1.00	2.00	14.3	
Event	37	Pre-Rig Down Safety Meeting	11/20/2015	01:10:00	USER	9.60	0.00	-1.00	16.0	ALL HES PRESENT
Event	38	Rig Down Lines	11/20/2015	02:04:58	USER					
Event	39	Pre-Convoy Safety Meeting	11/20/2015	02:07:54	USER					ALL HES PRESENT
Event	40	Crew Leave Location	11/20/2015	02:08:06	USER					THAN YOU FOR USING HALLIBURTON CEMENT. CLIFF SPARKS AND CREW

# CAERUS PUCKETT 11B-12 D 9.625" SURFACE H&P 330 (REVERCEM) #4



DH Density (ppg) Comb Pump Rate (bbl/min) PS Pump Press (psi) Pump Stg Tot (bbl)

① Call Out n/a;n/a;n/a;n/a	⑪ Prime Pumps 8.32;0;93;22.6	21 Slow Rate 8.29;2.1;81;187.3	31 Pump Cement 3.17;1;8;0.6
② Pre-Convoy Safety Meeting n/a;n/a;n/a;n/a	⑫ Test Lines 8.34;0;2011;22.6	22 Bump Plug 8.34;0;1485;203.4	32 End Of Cement 10.56;2.2;57;93.5
③ Crew Leave Yard n/a;n/a;n/a;n/a	⑬ Pump Spacer 1 7.61;1.8;79;0.3	23 Check Floats 0.65;0;103;203.4	33 Pump Spacer 8.07;0.9;2;0.3
④ Arrive At Loc n/a;n/a;n/a;n/a	⑭ Pump Spacer 2 10.15;2.1;90;1.1	24 Pump Through Parasite 0.75;0;76;0	34 Pump Cement 6.88;1.9;6;2.7
⑤ Assessment Of Location Safety Meeting n/a;n/a;n/a;n/a	⑮ Pump Spacer 3 7.6;1;83;0.7	25 Pump Cement 12.37;2;79;0.9	35 Shutdown 12.1;0;86;12.2
⑥ Other n/a;n/a;n/a;n/a	⑯ Pump Lead Cement 11.03;6;159;14.6	26 Shutdown 12.82;0;110;124.2	36 End Job 14.03;1;2;14.3
⑦ Pre-Rig Up Safety Meeting n/a;n/a;n/a;n/a	⑰ Pump Tail Cement 12.77;8;284;3.9	27 Pump Cement 7.19;1.3;72;0.5	37 Pre-Rig Down Safety Meeting 9.6;0;-1;16
⑧ Rig-Up Equipment n/a;n/a;n/a;n/a	⑱ Shutdown 12.92;5;279;63.4	28 Shutdown 15.2;3;165;93.5	38 Rig Down Lines n/a;n/a;n/a;n/a
⑨ Pre-Job Safety Meeting 0.04;0;74;0	⑲ Drop Top Plug 0.29;0;78;63.4	29 Pump Cement -0.03;0;-1;0	39 Pre-Convoy Safety Meeting n/a;n/a;n/a;n/a
⑩ Start Job 0.22;0;74;22.6	20 Pump Displacement 9.96;1;79;0.5	30 End Of Cement 15.7;0;1;104.5	40 Crew Leave Location n/a;n/a;n/a;n/a

▼ HALLIBURTON | iCem® Service

Created: 2015-11-18 13:03:15, Version: 4.2.393

Edit

Customer : CAERUS OIL AND GAS LLC - EBUS

Job Date : 11/18/2015 1:06:07 PM

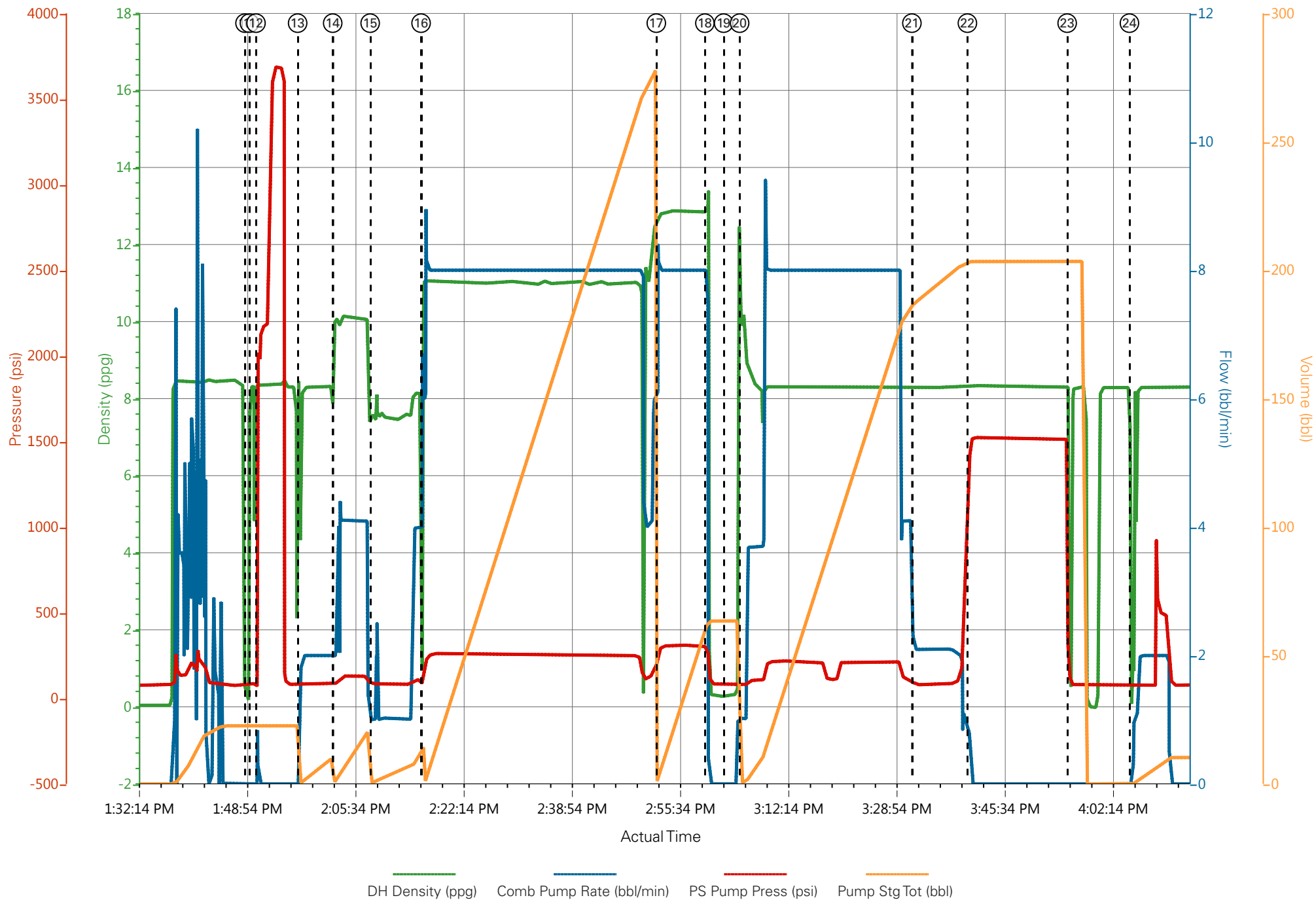
Well : 11B-12 D

Representative : GEORGE URBAN

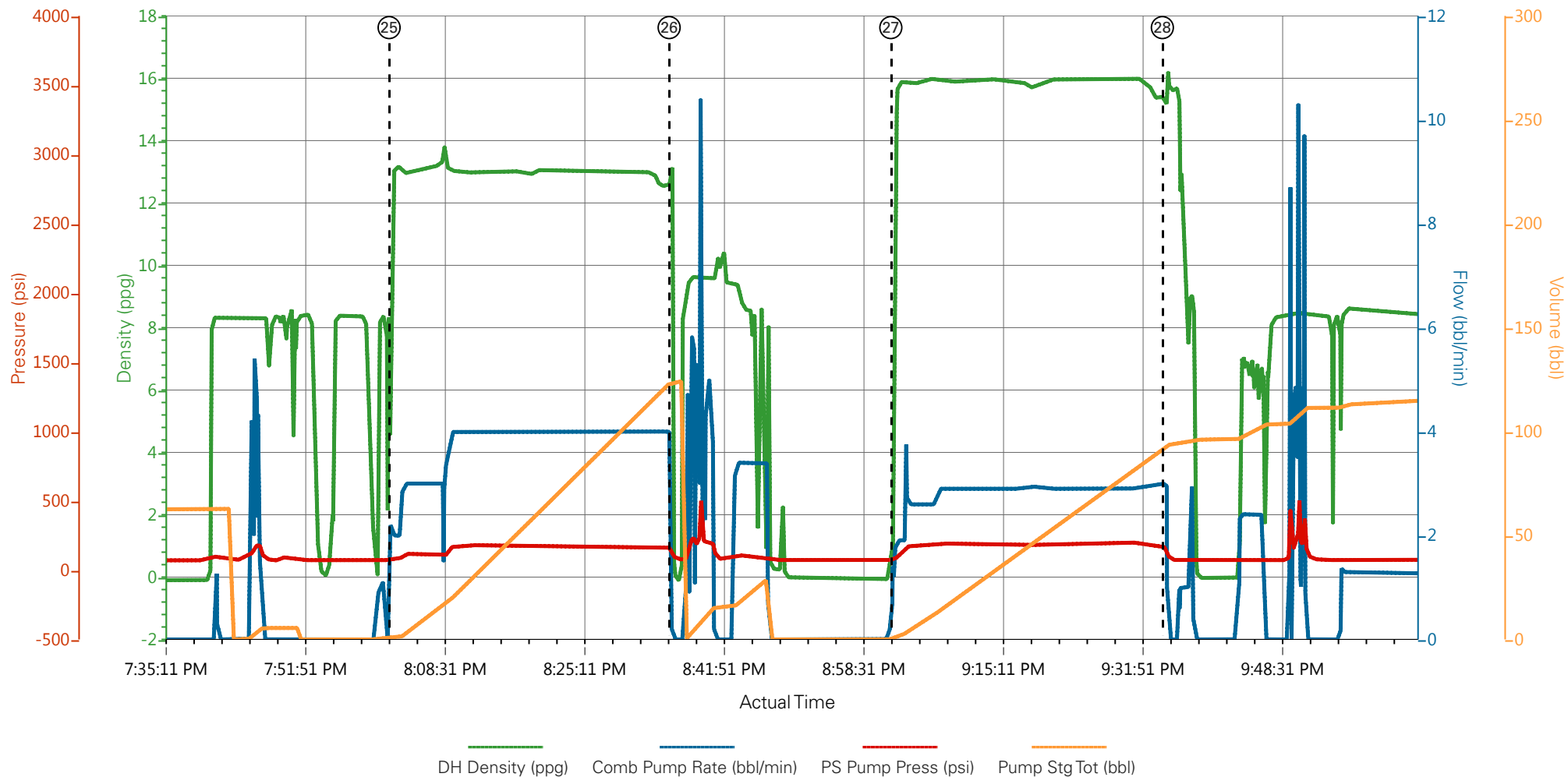
Sales Order # : 902911369

ELITE 4 : CLIFF SPARKS - ADAM ANGELO

# CAERUS PUCKETT 11B-12 D 9.625" SURFACE H&P 330 (REVERCEM) #4

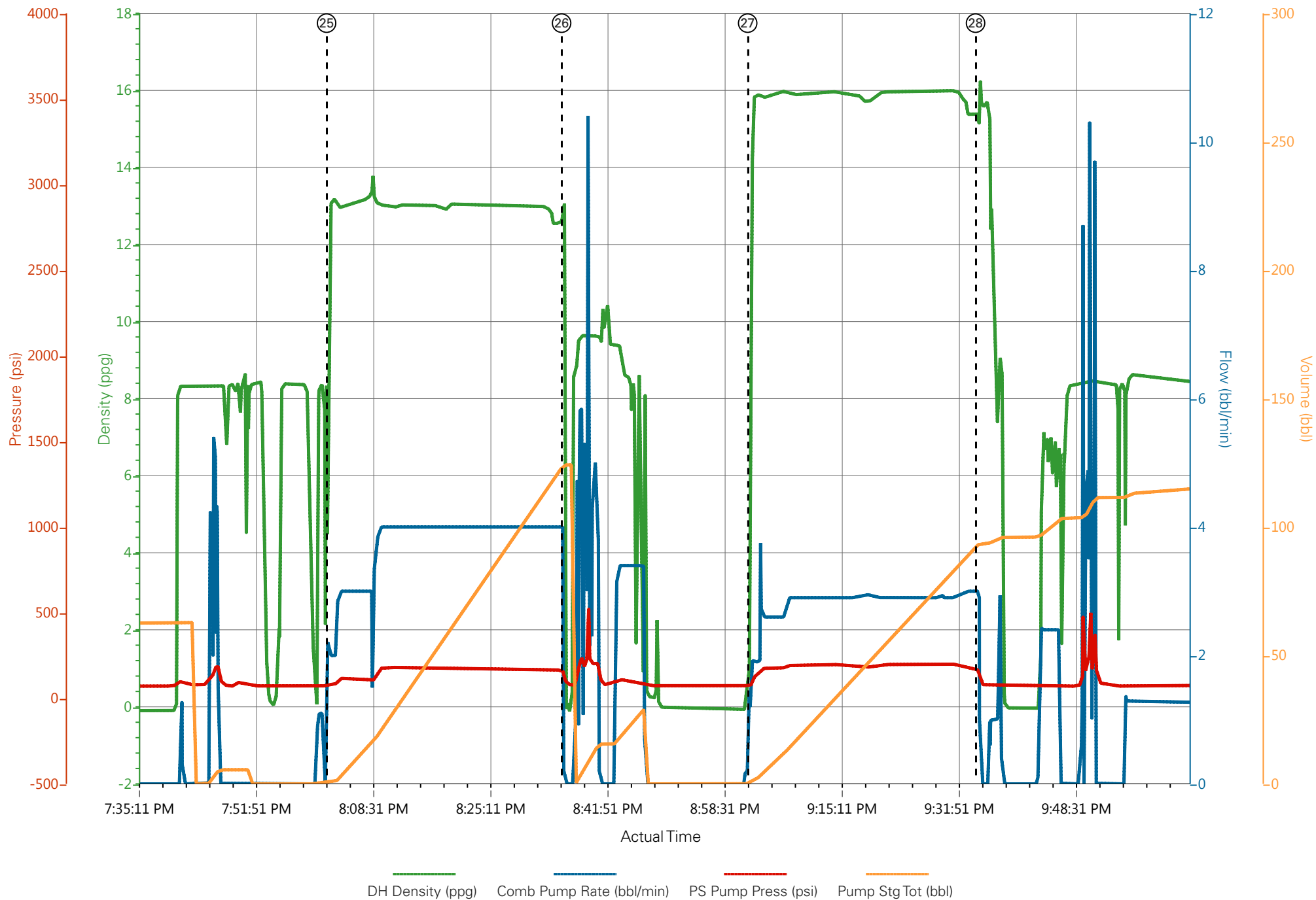


# CAERUS PUCKETT 11B-12 D 9.625" SURFACE H&P 330 (REVERCEM) #4



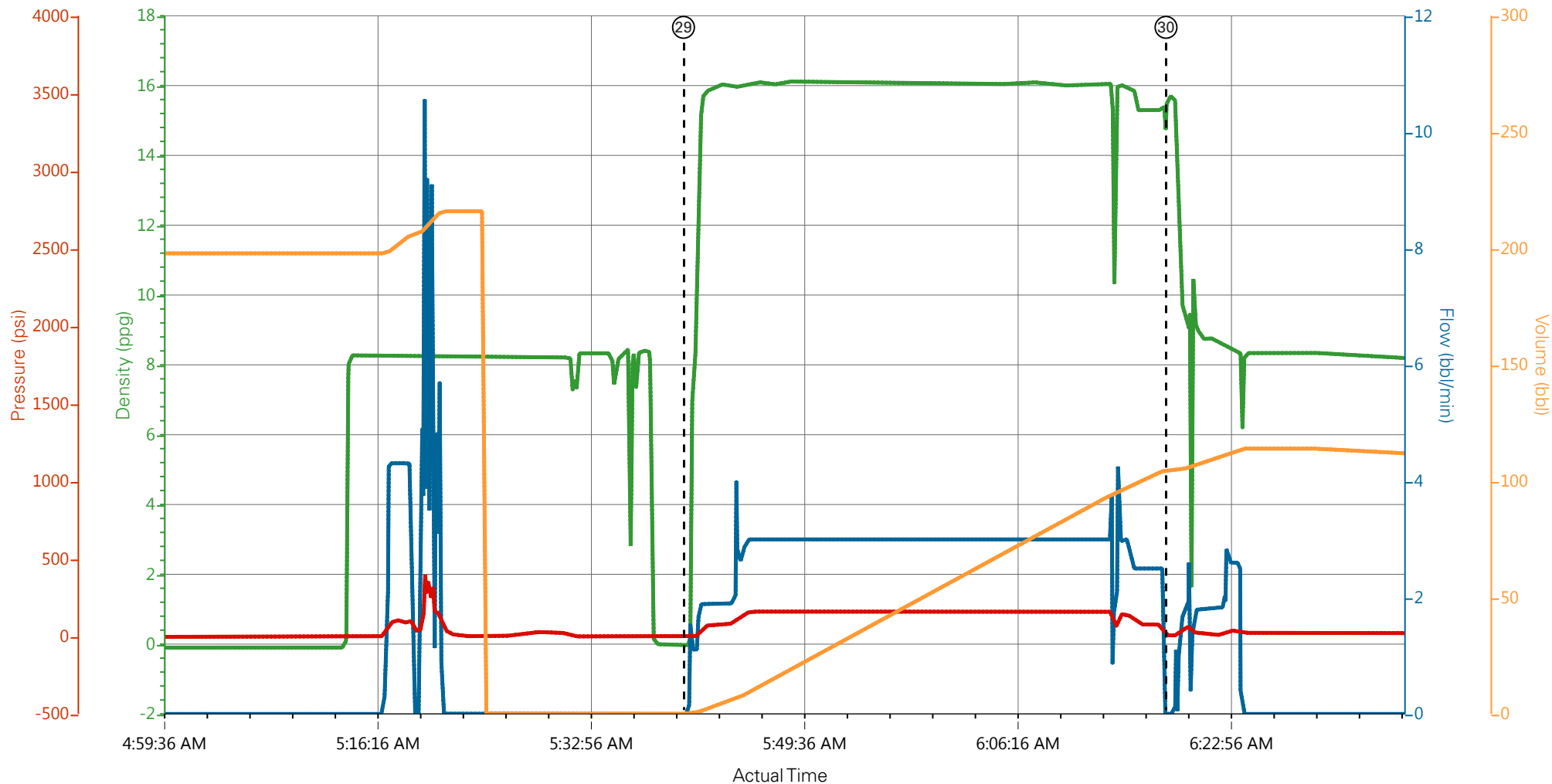
① Call Out n/a;n/a;n/a;n/a	⑪ Prime Pumps 8.32;0;93;22.6	21 Slow Rate 8.29;2.1;81;187.3	31 Pump Cement 3.17;1;8;0.6
② Pre-Convoy Safety Meeting n/a;n/a;n/a;n/a	⑫ Test Lines 8.34;0;2011;22.6	22 Bump Plug 8.34;0;1485;203.4	32 End Of Cement 10.56;2.2;57;93.5
③ Crew Leave Yard n/a;n/a;n/a;n/a	⑬ Pump Spacer 1 7.61;1.8;79;0.3	23 Check Floats 0.65;0;103;203.4	33 Pump Spacer 8.07;0.9;2;0.3
④ Arrive At Loc n/a;n/a;n/a;n/a	⑭ Pump Spacer 2 10.15;2.1;90;1.1	24 Pump Through Parasite 0.75;0;76;0	34 Pump Cement 6.88;1.9;6;2.7
⑤ Assessment Of Location Safety Meeting n/a;n/a;n/a;n/a	⑮ Pump Spacer 3 7.6;1;83;0.7	25 Pump Cement 12.37;2;79;0.9	35 Shutdown 12.1;0;86;12.2
⑥ Other n/a;n/a;n/a;n/a	⑯ Pump Lead Cement 11.03;6;159;14.6	26 Shutdown 12.82;0;110;124.2	36 End Job 14.03;1;2;14.3
⑦ Pre-Rig Up Safety Meeting n/a;n/a;n/a;n/a	⑰ Pump Tail Cement 12.77;8;284;3.9	27 Pump Cement 7.19;1.3;72;0.5	37 Pre-Rig Down Safety Meeting 9.6;0;-1;16
⑧ Rig-Up Equipment n/a;n/a;n/a;n/a	⑱ Shutdown 12.92;5;279;63.4	28 Shutdown 15.2;3;165;93.5	38 Rig Down Lines n/a;n/a;n/a;n/a
⑨ Pre-Job Safety Meeting 0.04;0;74;0	⑲ Drop Top Plug 0.29;0;78;63.4	29 Pump Cement -0.03;0;-1;0	39 Pre-Convoy Safety Meeting n/a;n/a;n/a;n/a
⑩ Start Job 0.22;0;74;22.6	20 Pump Displacement 9.96;1;79;0.5	30 End Of Cement 15.7;0;1;104.5	40 Crew Leave Location n/a;n/a;n/a;n/a

# CAERUS PUCKETT 11B-12 D 9.625" SURFACE H&P 330 (REVERCEM) #4





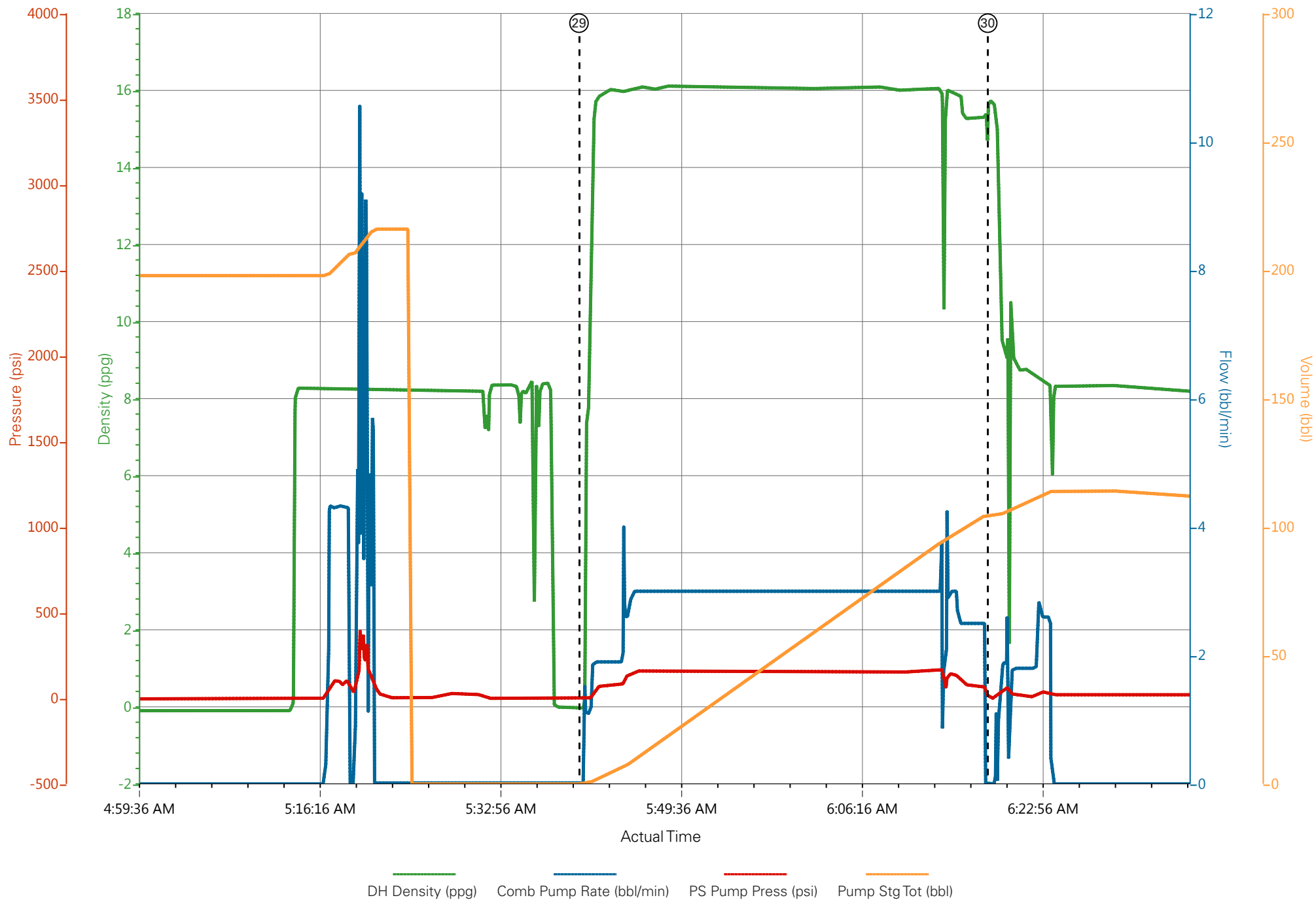
# CAERUS PUCKETT 11B-12 D 9.625" SURFACE H&P 330 (REVERCEM) #4



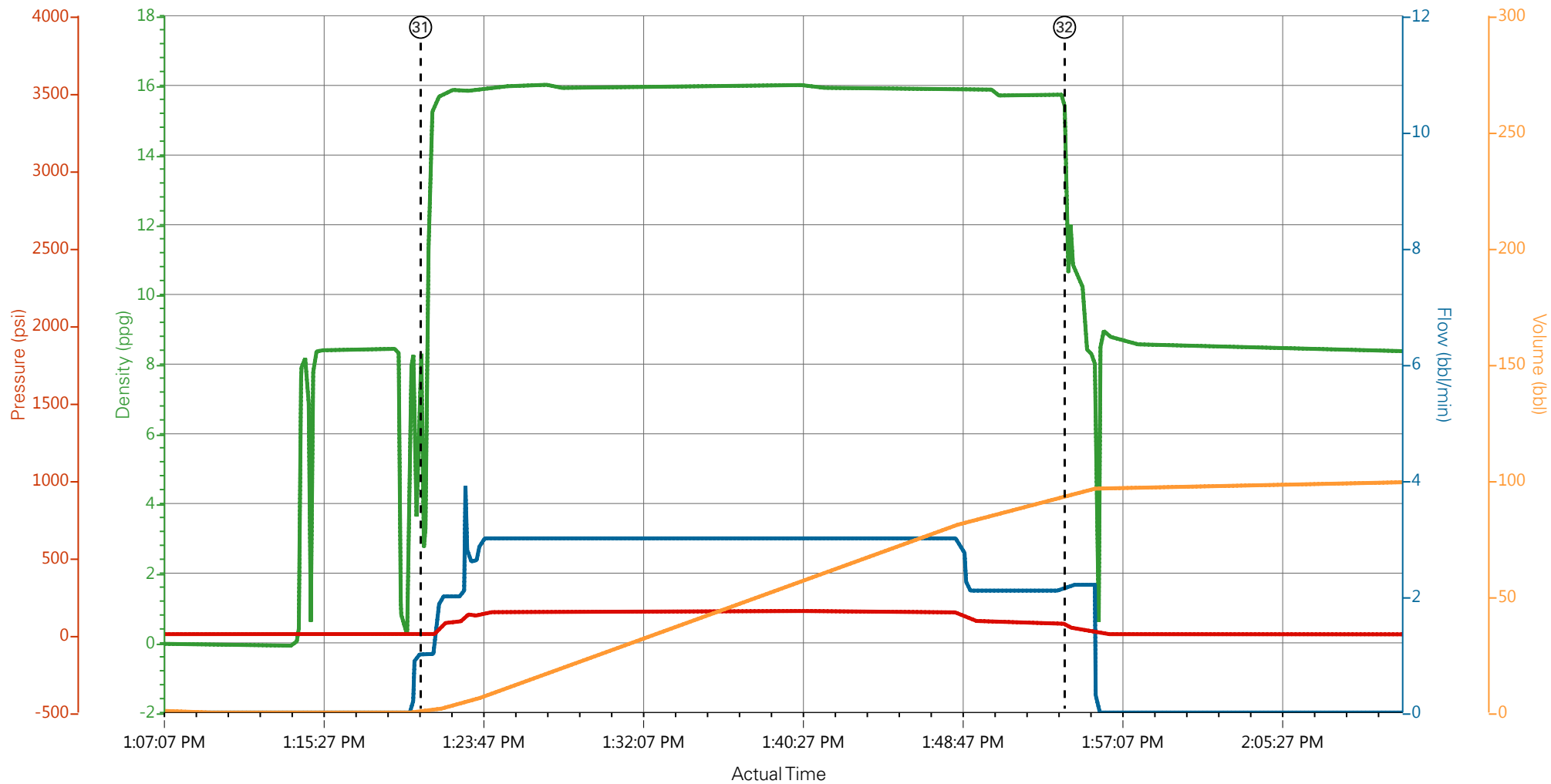
— DH Density (ppg)   
 — Comb Pump Rate (bbl/min)   
 — PS Pump Press (psi)   
 — Pump Stg Tot (bbl)

① Call Out n/a;n/a;n/a;n/a	⑪ Prime Pumps 8.32;0;93;22.6	21 Slow Rate 8.29;2.1;81;187.3	31 Pump Cement 3.17;1;8;0.6
② Pre-Convoy Safety Meeting n/a;n/a;n/a;n/a	⑫ Test Lines 8.34;0;2011;22.6	22 Bump Plug 8.34;0;1485;203.4	32 End Of Cement 10.56;2.2;57;93.5
③ Crew Leave Yard n/a;n/a;n/a;n/a	⑬ Pump Spacer 1 7.61;1.8;79;0.3	23 Check Floats 0.65;0;103;203.4	33 Pump Spacer 8.07;0.9;2;0.3
④ Arrive At Loc n/a;n/a;n/a;n/a	⑭ Pump Spacer 2 10.15;2.1;90;1.1	24 Pump Through Parasite 0.75;0;76;0	34 Pump Cement 6.88;1.9;6;2.7
⑤ Assessment Of Location Safety Meeting n/a;n/a;n/a;n/a	⑮ Pump Spacer 3 7.6;1;83;0.7	25 Pump Cement 12.37;2;79;0.9	35 Shutdown 12.1;0;86;12.2
⑥ Other n/a;n/a;n/a;n/a	⑯ Pump Lead Cement 11.03;6;159;14.6	26 Shutdown 12.82;0;110;124.2	36 End Job 14.03;1;2;14.3
⑦ Pre-Rig Up Safety Meeting n/a;n/a;n/a;n/a	⑰ Pump Tail Cement 12.77;8;284;3.9	27 Pump Cement 7.19;1.3;72;0.5	37 Pre-Rig Down Safety Meeting 9.6;0;-1;16
⑧ Rig-Up Equipment n/a;n/a;n/a;n/a	⑱ Shutdown 12.92;5;279;63.4	28 Shutdown 15.2;3;165;93.5	38 Rig Down Lines n/a;n/a;n/a;n/a
⑨ Pre-Job Safety Meeting 0.04;0;74;0	⑲ Drop Top Plug 0.29;0;78;63.4	29 Pump Cement -0.03;0;-1;0	39 Pre-Convoy Safety Meeting n/a;n/a;n/a;n/a
⑩ Start Job 0.22;0;74;22.6	20 Pump Displacement 9.96;1;79;0.5	30 End Of Cement 15.7;0;1;104.5	40 Crew Leave Location n/a;n/a;n/a;n/a

# CAERUS PUCKETT 11B-12 D 9.625" SURFACE H&P 330 (REVERCEM) #4



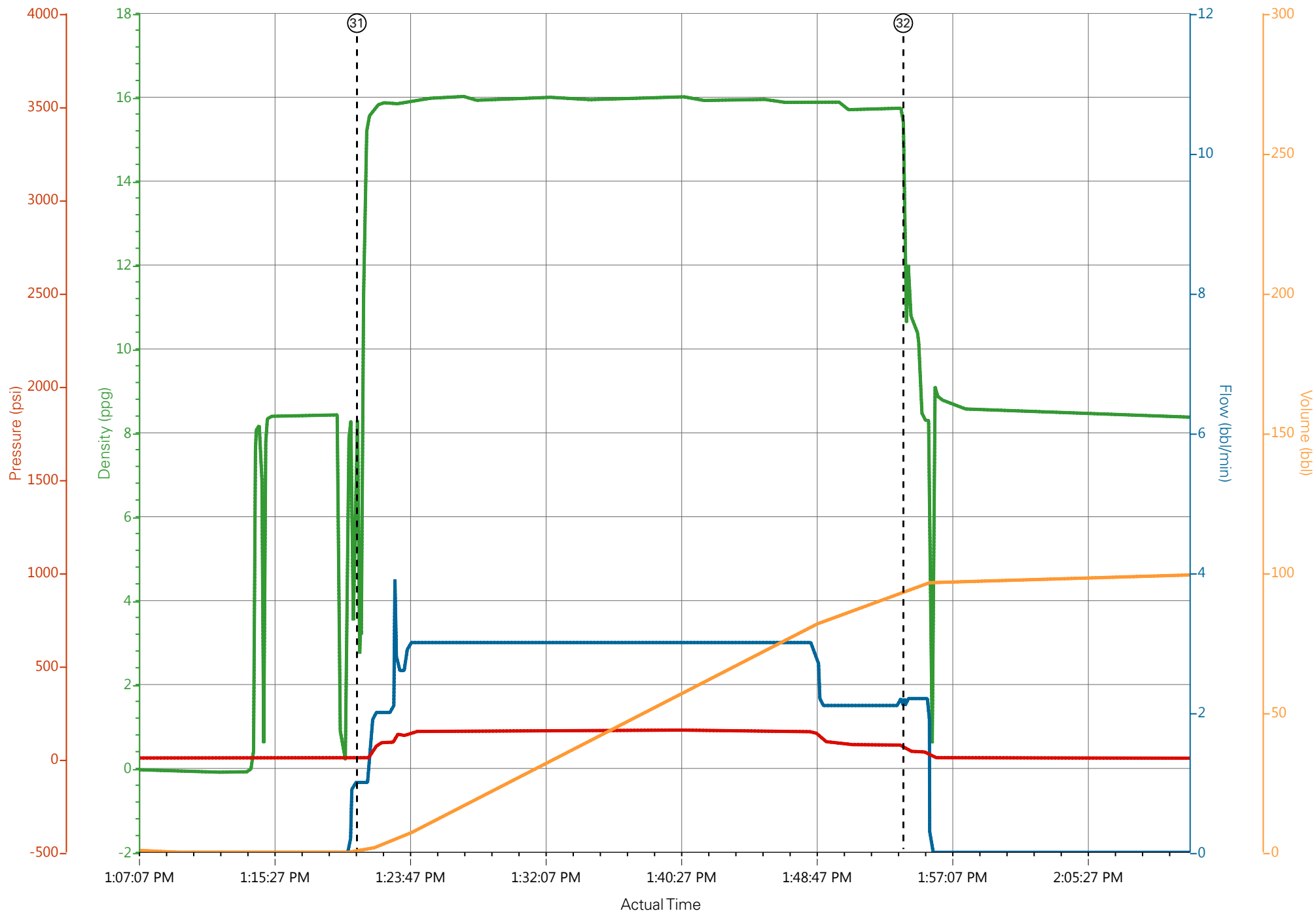
# CAERUS PUCKETT 11B-12 D 9.625" SURFACE H&P 330 (REVERCEM) #4



— DH Density (ppg)   
 — Comb Pump Rate (bbl/min)   
 — PS Pump Press (psi)   
 — Pump Stg Tot (bbl)

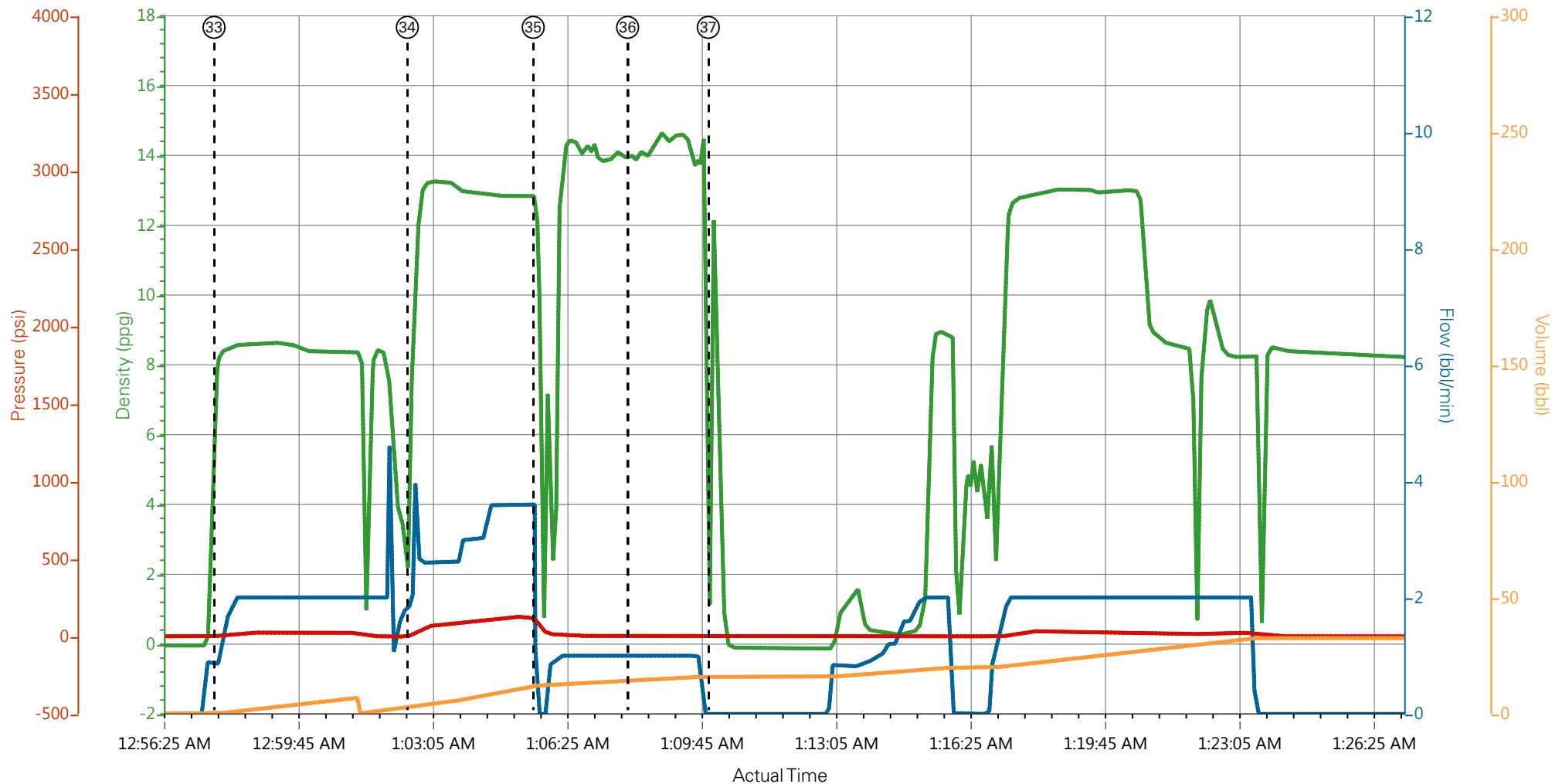
① Call Out n/a;n/a;n/a;n/a	⑪ Prime Pumps 8.32;0;93;22.6	21 Slow Rate 8.29;2.1;81;187.3	31 Pump Cement 3.17;1;8;0.6
② Pre-Convoy Safety Meeting n/a;n/a;n/a;n/a	⑫ Test Lines 8.34;0;2011;22.6	22 Bump Plug 8.34;0;1485;203.4	32 End Of Cement 10.56;2.2;57;93.5
③ Crew Leave Yard n/a;n/a;n/a;n/a	⑬ Pump Spacer 1 7.61;1.8;79;0.3	23 Check Floats 0.65;0;103;203.4	33 Pump Spacer 8.07;0.9;2;0.3
④ Arrive At Loc n/a;n/a;n/a;n/a	⑭ Pump Spacer 2 10.15;2.1;90;1.1	24 Pump Through Parasite 0.75;0;76;0	34 Pump Cement 6.88;1.9;6;2.7
⑤ Assessment Of Location Safety Meeting n/a;n/a;n/a;n/a	⑮ Pump Spacer 3 7.6;1;83;0.7	25 Pump Cement 12.37;2;79;0.9	35 Shutdown 12.1;0;86;12.2
⑥ Other n/a;n/a;n/a;n/a	⑯ Pump Lead Cement 11.03;6;159;14.6	26 Shutdown 12.82;0;110;124.2	36 End Job 14.03;1;2;14.3
⑦ Pre-Rig Up Safety Meeting n/a;n/a;n/a;n/a	⑰ Pump Tail Cement 12.77;8;284;3.9	27 Pump Cement 7.19;1.3;72;0.5	37 Pre-Rig Down Safety Meeting 9.6;0;-1;16
⑧ Rig-Up Equipment n/a;n/a;n/a;n/a	⑱ Shutdown 12.92;5;279;63.4	28 Shutdown 15.2;3;165;93.5	38 Rig Down Lines n/a;n/a;n/a;n/a
⑨ Pre-Job Safety Meeting 0.04;0;74;0	⑲ Drop Top Plug 0.29;0;78;63.4	29 Pump Cement -0.03;0;-1;0	39 Pre-Convoy Safety Meeting n/a;n/a;n/a;n/a
⑩ Start Job 0.22;0;74;22.6	20 Pump Displacement 9.96;1;79;0.5	30 End Of Cement 15.7;0;1;104.5	40 Crew Leave Location n/a;n/a;n/a;n/a

# CAERUS PUCKETT 11B-12 D 9.625" SURFACE H&P 330 (REVERCEM) #4



DH Density (ppg) Comb Pump Rate (bbl/min) PS Pump Press (psi) Pump Stg Tot (bbl)

# CAERUS PUCKETT 11B-12 D 9.625" SURFACE H&P 330 (REVERCEM) #4



— DH Density (ppg)   
 — Comb Pump Rate (bbl/min)   
 — PS Pump Press (psi)   
 — Pump Stg Tot (bbl)

① Call Out n/a;n/a;n/a;n/a	⑪ Prime Pumps 8.32;0;93;22.6	21 Slow Rate 8.29;2.1;81;187.3	31 Pump Cement 3.17;1;8;0.6
② Pre-Convoy Safety Meeting n/a;n/a;n/a;n/a	⑫ Test Lines 8.34;0;2011;22.6	22 Bump Plug 8.34;0;1485;203.4	32 End Of Cement 10.56;2.2;57;93.5
③ Crew Leave Yard n/a;n/a;n/a;n/a	⑬ Pump Spacer 1 7.61;1.8;79;0.3	23 Check Floats 0.65;0;103;203.4	33 Pump Spacer 8.07;0.9;2;0.3
④ Arrive At Loc n/a;n/a;n/a;n/a	⑭ Pump Spacer 2 10.15;2.1;90;1.1	24 Pump Through Parasite 0.75;0;76;0	34 Pump Cement 6.88;1.9;6;2.7
⑤ Assessment Of Location Safety Meeting n/a;n/a;n/a;n/a	⑮ Pump Spacer 3 7.6;1;83;0.7	25 Pump Cement 12.37;2;79;0.9	35 Shutdown 12.1;0;86;12.2
⑥ Other n/a;n/a;n/a;n/a	⑯ Pump Lead Cement 11.03;6;159;14.6	26 Shutdown 12.82;0;110;124.2	36 End Job 14.03;1;2;14.3
⑦ Pre-Rig Up Safety Meeting n/a;n/a;n/a;n/a	⑰ Pump Tail Cement 12.77;8;284;3.9	27 Pump Cement 7.19;1.3;72;0.5	37 Pre-Rig Down Safety Meeting 9.6;0;-1;16
⑧ Rig-Up Equipment n/a;n/a;n/a;n/a	⑱ Shutdown 12.92;5;279;63.4	28 Shutdown 15.2;3;165;93.5	38 Rig Down Lines n/a;n/a;n/a;n/a
⑨ Pre-Job Safety Meeting 0.04;0;74;0	⑲ Drop Top Plug 0.29;0;78;63.4	29 Pump Cement -0.03;0;-1;0	39 Pre-Convoy Safety Meeting n/a;n/a;n/a;n/a
⑩ Start Job 0.22;0;74;22.6	20 Pump Displacement 9.96;1;79;0.5	30 End Of Cement 15.7;0;1;104.5	40 Crew Leave Location n/a;n/a;n/a;n/a

# CAERUS PUCKETT 11B-12 D 9.625" SURFACE H&P 330 (REVERCEM) #4

