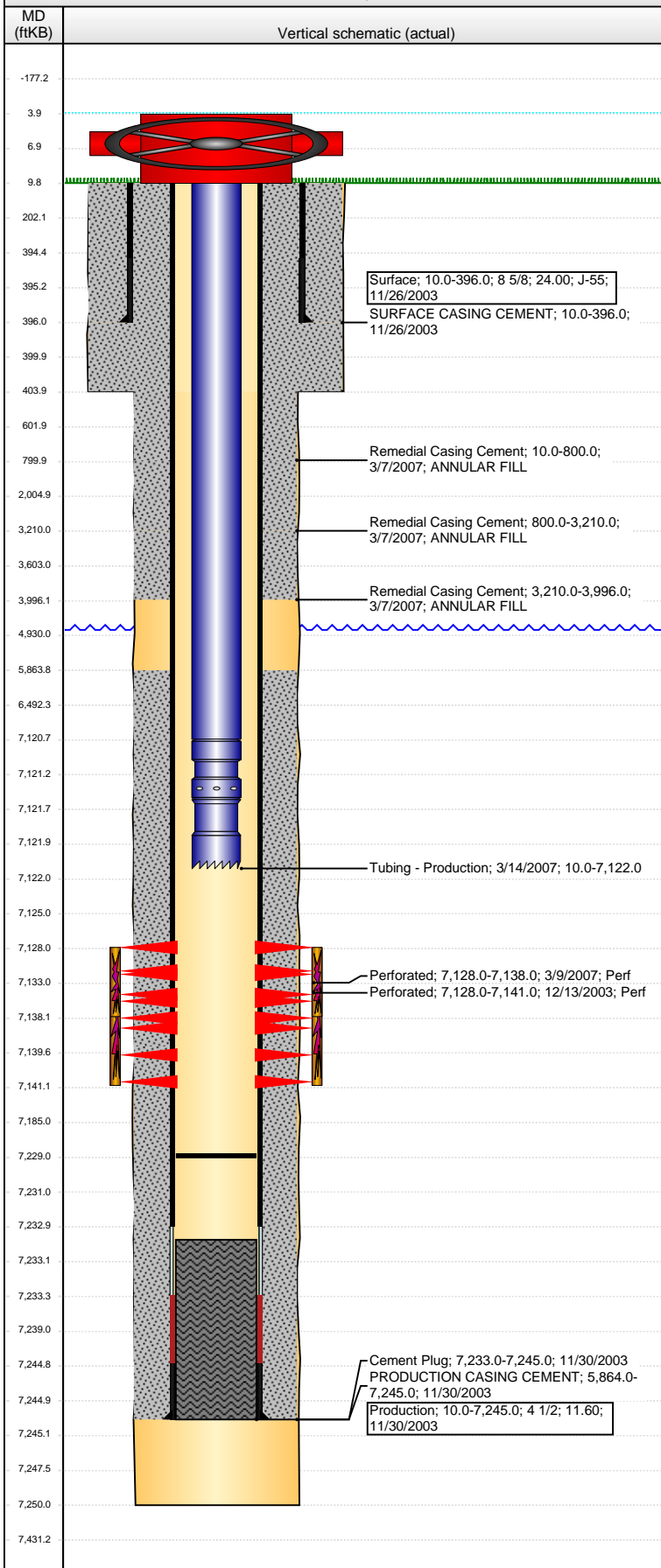


**Well Name: BICKLING 03-43**

VERTICAL - ORIGINAL HOLE, 4/4/2016 3:40:07 PM



## Well Header

API 05-123-21622	Business Unit DJ BASIN	District 15	Well Config VERTICAL
Original KB Elevation (ft) 4,814	KB - GL / MSL (ftKB) 10.00	Spud Date 11/25/2003	P & A Date
Comment			

## Directions To Well

72 & 45, N 2/10, W 1/10 TO BICKLING 3-44, N 300', W 2/10, S 300' INTO.

## Congressional Location

Quarter 1	Quarter 2	Quarter 3	Quarter 4	Section	Township	Twnshp N...	Range	Rng E/W Dir
		SW	SE	3	6	N	65	W

## Bottom Hole Location

North-South Distance (ft)	From N or S Line	East-West Distance (ft)	From E or W Line
---------------------------	------------------	-------------------------	------------------

## Plug Back Total Depths

Date	Depth (ftKB)	Method	Com
11/30/2003	7,233.0	CASING TALLY	LATCH DOWN BAFFLE
12/12/2003	7,223.0	CASED HOLE LOG	DEPTH LOGGER ON CBL
1/7/2004	7,230.0	TAG	CLEAN OUT
3/14/2007	7,229.0	TAG	CLEAN OUT

## Wellbore Sections

Section Des	Size (in)	Act Top, MD (ftKB)	Act Btm, MD (ftKB)
SURFACE	12 1/4	10.0	404.0
PRODUCTION	7 7/8	404.0	7,250.0

## Zone Statuses

Zone Name	Status Date	Status	Fluid Type	Job	Prod Method
CODELL	1/12/2004	PR	Oil	DRILLING/CO...	
CODELL	3/15/2007	PR	Oil	RE-FRAC, 3/2/...	

## Casing Strings

### Surface, 396.0ftKB

Casing Description	Run Date	OD (in)	Wt/Len (l...)	Grade	Top, MD (ft...)	MD (ftKB)
Surface	11/26/2003	8 5/8	24.00	J-55	10.0	396.0

### Production, 7,245.0ftKB

Casing Description	Run Date	OD (in)	Wt/Len (l...)	Grade	Top, MD (ft...)	MD (ftKB)
Production	11/30/2003	4 1/2	11.60		10.0	7,245.0

## Cement

Description	Top Depth (ftKB)	Bottom Depth (ftKB)
SURFACE CASING CEMENT	10.0	396.0
Cement Plug	7,233.0	7,245.0
PRODUCTION CASING CEMENT	5,864.0	7,245.0
Remedial Casing Cement	10.0	800.0
Remedial Casing Cement	800.0	3,210.0
Remedial Casing Cement	3,210.0	3,996.0

## Tubing Strings

Tubing Description	Run Date	String...	ID (in)	Wt (lb/ft)	Grade	Len (ft)	Set De...
Tubing - Production	3/14/2007	2 3/8	1.995	4.70	J-55	7,112.00	

## Tubing Components

Item Des	OD (in)	Wt (lb/ft)	Grade	Jts	Len (ft)	Btm (ftKB)	Btm (TVD) (ftKB)
Tubing	2 3/8	4.70	J-55	218	7,110.60	7,120.6	
Seal Nipple	2 3/8			1	1.00	7,121.6	
Notched collar	2 3/8			1	0.40	7,122.0	

## Perforation Data

Zone	Bnch/St g	Entered Shot Total	Top (ftKB)	Btm (ftKB)	Date
CODELL, ORIGINAL HOLE		40	7,128.00	7,138.00	3/9/2007
CODELL, ORIGINAL HOLE		52	7,128.00	7,141.00	12/13/2003

## Stimulations & Treatments

Date 12/19/2003	Zone CODELL, ORIGINAL HOLE	Primary Job Type DRILLING/COMPLETION - ORIGINAL
Technical Result	Tech Result Details	Tech Result Note
Comment		

**Well Name: BICKLING 03-43**

VERTICAL - ORIGINAL HOLE, 4/4/2016 3:40:10 PM

## Stimulations & Treatments

Date 3/6/2007	Zone CODELL, ORIGINAL HOLE	Primary Job Type RE-FRAC
Technical Result	Tech Result Details	Tech Result Note
Comment		

## Other In Hole

Run Date	Des	OD (in)	Top (ftKB)	Btm (ftKB)

## Logs

Date	Type	Top, MD (ftKB)	Btm, MD (ftKB)
11/29/2003	COMPENSATED DENSITY	3,600.0	7,227.0
11/29/2003	INDUCTION	404.0	7,247.0
12/12/2003	CBL/CCL/GR	5,700.0	7,221.0

