



Directional

WETCO FARMS F-J-4HC

MD
5":100'

Company: Bonanza Creek Energy Operating

State: Colorado

Well Name: WETCO FARMS F-J-4HC

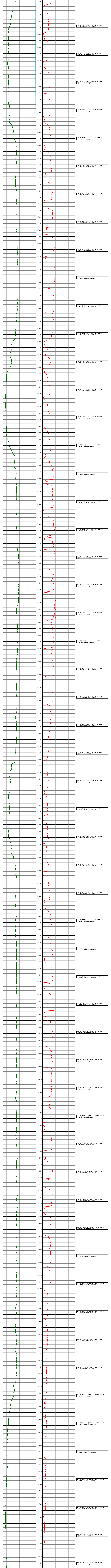
County/Parish: Weld

UWI: 05-123-36767-00

Survey Company: Ensign Directional

Rig Id: Ensign 136

Job number: 136-361



8430
8440
8450
8460
8470
8480
8490
8500
8510
8520
8530
8540
8550
8560
8570
8580
8590
8600
8610
8620
8630
8640
8650
8660
8670
8680
8690
8700
8710
8720
8730
8740
8750
8760
8770
8780
8790
8800
8810
8820
8830
8840
8850
8860
8870
8880
8890
8900
8910
8920
8930
8940
8950
8960
8970
8980
8990
9000
9010
9020
9030
9040
9050
9060
9070
9080
9090
9100
9110
9120
9130
9140
9150
9160
9170
9180
9190
9200
9210
9220
9230
9240
9250
9260
9270
9280
9290
9300
9310
9320
9330
9340
9350
9360
9370
9380
9390
9400
9410
9420
9430
9440
9450
9460
9470
9480
9490
9500
9510
9520
9530
9540
9550
9560
9570
9580
9590
9600
9610
9620
9630
9640
9650
9660
9670
9680
9690
9700
9710
9720
9730
9740
9750
9760
9770
9780
9790
9800
9810
9820
9830
9840
9850
9860
9870
9880
9890
9900
9910
9920
9930
9940
9950
9960
9970
9980
9990
10000
10010
10020
10030
10040
10050
10060
10070
10080
10090
10100
10110
10120
10130
10140
10150
10160
10170
10180
10190
10200
10210
10220
10230
10240
10250
10260
10270
10280
10290
10300
10310
10320
10330
10340
10350
10360
10370
10380
10390
10400
10410
10420
10430
10440
10450
10460
10470
10480
10490
10500
10510
10520
10530
10540
10550
10560
10570
10580
10590
10600
10610
10620
10630
10640
10650
10660
10670
10680
10690
10700
10710
10720
10730
10740
10750
10760
10770
10780
10790
10800
10810
10820

F154 MD101669 (0) 10290 (3) Azm(177.5) YD(6492.07)
US(232.79) NS(1487.53) EW(1482.75)

F155 MD101701 (0) 10280 (3) Azm(179.5) YD(6491.88)
US(237.64) NS(1730.59) EW(1484.44)

F156 MD101854 (0) 10288 (3) Azm(179.5) YD(6492.11)
US(231.16) NS(1773.59) EW(1485.69)

F157 MD101974 (0) 10288 (3) Azm(179.5) YD(6492.26)
US(237.64) NS(1516.56) EW(1484.24)

F158 MD101947 (0) 10288 (3) Azm(182.5) YD(6494.10)
US(239.29) NS(1689.59) EW(1485.69)

F159 MD101982 (0) 10288 (3) Azm(182.5) YD(6492.12)
US(232.29) NS(1791.53) EW(1485.69)

F160 MD101975 (0) 10288 (3) Azm(182.5) YD(6495.72)
US(239.29) NS(1944.53) EW(1485.24)

F161 MD101976 (0) 10288 (3) Azm(182.5) YD(6496.43)
US(231.63) NS(1687.53) EW(1485.69)

F162 MD101110 (0) 10280 (3) Azm(182.5) YD(6496.81)
US(236.29) NS(1730.48) EW(1485.69)

F163 MD101863 (0) 10291 (3) Azm(181.3) YD(6496.33)
US(236.29) NS(1730.47) EW(1485.69)

F164 MD101896 (0) 10291 (3) Azm(182.4) YD(6496.28)
US(244.63) NS(1715.49) EW(1485.69)

F165 MD101837 (0) 10287 (3) Azm(182.5) YD(6494.27)
US(244.63) NS(1749.43) EW(1481.69)

F166 MD101882 (0) 10287 (3) Azm(181.3) YD(6493.59)
US(236.29) NS(1729.43) EW(1485.69)

F167 MD101925 (0) 10287 (3) Azm(182.5) YD(6493.07)
US(237.64) NS(1744.43) EW(1485.69)

F168 MD101978 (0) 10287 (3) Azm(182.5) YD(6494.25)
US(236.29) NS(1739.47) EW(1485.69)

F169 MD101110 (0) 10287 (3) Azm(182.5) YD(6494.06)
US(247.64) NS(1729.43) EW(1477.63)

F170 MD101103 (0) 10287 (3) Azm(181.3) YD(6496.59)
US(236.29) NS(1729.43) EW(1485.69)

F171 MD101198 (0) 10287 (3) Azm(182.4) YD(6498.47)
US(239.29) NS(1741.16) EW(1473.77)

F172 MD101237 (0) 10287 (3) Azm(182.5) YD(6499.78)
US(247.64) NS(1749.43) EW(1471.22)

F173 MD101387 (0) 10287 (3) Azm(182.5) YD(6500.51)
US(236.29) NS(1739.47) EW(1485.69)

F174 MD101324 (0) 10287 (3) Azm(182.5) YD(6500.74)
US(247.64) NS(1742.88) EW(1485.69)

F175 MD101367 (0) 10287 (3) Azm(182.5) YD(6500.66)
US(236.29) NS(1739.47) EW(1485.69)

F176 MD101410 (0) 10287 (3) Azm(182.3) YD(6500.55)
US(247.64) NS(1749.43) EW(1481.31)

F177 MD101482 (0) 10287 (3) Azm(182.5) YD(6500.22)
US(237.64) NS(1730.47) EW(1485.69)

F178 MD101490 (0) 10287 (3) Azm(182.5) YD(6499.60)
US(231.16) NS(1739.47) EW(1485.69)

F179 MD101538 (0) 10287 (3) Azm(181.3) YD(6499.03)
US(236.29) NS(1739.47) EW(1485.69)

F180 MD101587 (0) 10287 (3) Azm(179.5) YD(6498.42)
US(236.29) NS(1739.47) EW(1485.69)

F181 MD101624 (0) 10287 (3) Azm(179.5) YD(6498.27)
US(231.16) NS(1749.43) EW(1485.69)

F182 MD101666 (0) 10287 (3) Azm(182.5) YD(6498.50)
US(237.64) NS(1749.43) EW(1485.69)

F183 MD101709 (0) 10287 (3) Azm(182.5) YD(6498.36)
US(231.16) NS(1739.47) EW(1485.69)

F184 MD101762 (0) 10287 (3) Azm(182.5) YD(6499.69)
US(237.64) NS(1739.47) EW(1485.69)

F185 MD101790 (0) 10287 (3) Azm(179.5) YD(6499.51)
US(236.29) NS(1739.47) EW(1485.69)

F186 MD101830 (0) 10287 (3) Azm(182.3) YD(6500.17)
US(239.29) NS(1739.47) EW(1485.69)

F187 MD101881 (0) 10287 (3) Azm(182.3) YD(6500.81)
US(231.16) NS(1749.43) EW(1485.69)

F188 MD101923 (0) 10287 (3) Azm(182.5) YD(6500.49)
US(232.29) NS(1742.88) EW(1485.69)

F189 MD101955 (0) 10287 (3) Azm(182.5) YD(6500.03)
US(247.64) NS(1741.16) EW(1485.69)

F190 MD101008 (0) 10286 (3) Azm(183.6) YD(6500.30)
US(236.29) NS(1739.47) EW(1485.69)

F191 MD101051 (0) 10286 (3) Azm(183.2) YD(6500.23)
US(244.63) NS(1749.43) EW(1485.69)

F192 MD101098 (0) 10286 (3) Azm(182.3) YD(6500.03)
US(236.29) NS(1739.47) EW(1485.69)

F193 MD101137 (0) 10286 (3) Azm(181.6) YD(6500.54)
US(236.29) NS(1739.47) EW(1485.69)

F194 MD101179 (0) 10286 (3) Azm(182.3) YD(6500.40)
US(244.63) NS(1749.43) EW(1485.69)

F195 MD101222 (0) 10286 (3) Azm(183.7) YD(6500.00)
US(236.29) NS(1739.47) EW(1485.69)

F196 MD101265 (0) 10286 (3) Azm(185.3) YD(6500.60)
US(244.63) NS(1749.43) EW(1485.69)

F197 MD101308 (0) 10286 (3) Azm(184.3) YD(6500.75)
US(236.29) NS(1739.47) EW(1485.69)

F198 MD101350 (0) 10286 (3) Azm(185.3) YD(6500.30)
US(236.29) NS(1739.47) EW(1485.69)

F199 MD101393 (0) 10286 (3) Azm(184.6) YD(6500.83)
US(244.63) NS(1749.43) EW(1485.69)

F200 MD101436 (0) 10286 (3) Azm(184.3) YD(6500.53)
US(236.29) NS(1739.47) EW(1485.69)

F201 MD101479 (0) 10286 (3) Azm(184.3) YD(6500.19)
US(244.63) NS(1749.43) EW(1485.69)

F202 MD101522 (0) 10286 (3) Azm(184.3) YD(6500.80)
US(236.29) NS(1739.47) EW(1485.69)

F203 MD101565 (0) 10286 (3) Azm(184.3) YD(6500.59)
US(244.63) NS(1749.43) EW(1485.69)

F204 MD101608 (0) 10286 (3) Azm(184.3) YD(6500.80)
US(236.29) NS(1739.47) EW(1485.69)

F205 MD101651 (0) 10286 (3) Azm(184.3) YD(6500.53)
US(244.63) NS(1749.43) EW(1485.69)

F206 MD101694 (0) 10286 (3) Azm(184.3) YD(6500.29)
US(236.29) NS(1739.47) EW(1485.69)

F207 MD101737 (0) 10286 (3) Azm(184.3) YD(6500.80)
US(236.29) NS(1739.47) EW(1485.69)

F208 MD101780 (0) 10286 (3) Azm(184.3) YD(6500.02)
US(236.29) NS(1739.47) EW(1485.69)

F209 MD101823 (0) 10286 (3) Azm(184.3) YD(6500.80)
US(236.29) NS(1739.47) EW(1485.69)

F210 MD101866 (0) 10286 (3) Azm(184.3) YD(6500.59)
US(244.63) NS(1749.43) EW(1485.69)

F211 MD101909 (0) 10286 (3) Azm(184.3) YD(6500.80)
US(236.29) NS(1739.47) EW(1485.69)

F212 MD101952 (0) 10286 (3) Azm(184.3) YD(6500.80)
US(236.29) NS(1739.47) EW(1485.69)

F213 MD101995 (0) 10286 (3) Azm(184.3) YD(6500.80)
US(236.29) NS(1739.47) EW(1485.69)

F214 MD102038 (0) 10286 (3) Azm(184.3) YD(6500.80)
US(236.29) NS(1739.47) EW(1485.69)

F215 MD102081 (0) 10286 (3) Azm(184.3) YD(6500.80)
US(236.29) NS(1739.47) EW(1485.69)

F216 MD102124 (0) 10286 (3) Azm(184.3) YD(6500.80)
US(236.29) NS(1739.47) EW(1485.69)

F217 MD102167 (0) 10286 (3) Azm(184.3) YD(6500.80)
US(236.29) NS(1739.47) EW(1485.69)

F218 MD102210 (0) 10286 (3) Azm(184.3) YD(6500.80)
US(236.29) NS(1739.47) EW(1485.69)

F219 MD102253 (0) 10286 (3) Azm(184.3) YD(6500.80)
US(236.29) NS(1739.47) EW(1485.69)

F220 MD102296 (0) 10286 (3) Azm(184.3) YD(6500.80)
US(236.29) NS(1739.47) EW(1485.69)

F221 MD102339 (0) 10286 (3) Azm(184.3) YD(6500.80)
US(236.29) NS(1739.47) EW(1485.69)

F222 MD102382 (0) 10286 (3) Azm(184.3) YD(6500.80)
US(236.29) NS(1739.47) EW(1485.69)

F223 MD102425 (0) 10286 (3) Azm(184.3) YD(6500.80)
US(236.29) NS(1739.47) EW(1485.69)

F224 MD102468 (0) 10286 (3) Azm(184.3) YD(6500.80)
US(236.29) NS(1739.47) EW(1485.69)

F225 MD102511 (0) 10286 (3) Azm(184.3) YD(6500.80)
US(236.29) NS(1739.47) EW(1485.69)

F226 MD102554 (0) 10286 (3) Azm(184.3) YD(6500.80)
US(236.29) NS(1739.47) EW(1485.69)

F227 MD102597 (0) 10286 (3) Azm(184.3) YD(6500.80)
US(236.29) NS(1739.47) EW(1485.69)

F228 MD102640 (0) 10286 (3) Azm(184.3) YD(6500.80)
US(236.29) NS(1739.47) EW(1485.69)

F229 MD102683 (0) 10286 (3) Azm(184.3) YD(6500.80)
US(236.29) NS(1739.47) EW(1485.69)

F230 MD102726 (0) 10286 (3) Azm(184.3) YD(6500.80)
US(236.29) NS(1739.47) EW(1485.69)

F231 MD102769 (0) 10286 (3) Azm(184.3) YD(6500.80)
US(236.29) NS(1739.47) EW(1485.69)

F232 MD102812 (0) 10286 (3) Azm(184.3) YD(6500.80)
US(236.29) NS(1739.47) EW(1485.69)

F233 MD102855 (0) 10286 (3) Azm(184.3) YD(6500.80)
US(236.29) NS(1739.47) EW(1485.69)

F234 MD102898 (0) 10286 (3) Azm(184.3) YD(6500.80)
US(236.29) NS(1739.47) EW(1485.69)

F235 MD102941 (0) 10286 (3) Azm(184.3) YD(6500.80)
US(236.29) NS(1739.47) EW(1485.69)

F236 MD102984 (0) 10286 (3) Azm(184.3) YD(6500.80)
US(236.29) NS(1739.47) EW(1485.69)

F237 MD103027 (0) 10286 (3) Azm(184.3) YD(6500.80)
US(236.29) NS(1739.47) EW(1485.69)

F238 MD103070 (0) 10286 (3) Azm(184.3) YD(6500.80)
US(236.29) NS(1739.47) EW(1485.69)

F239 MD103113 (0) 10286 (3) Azm(184.3) YD(6500.80)
US(236.29) NS(1739.47) EW(1485.69)

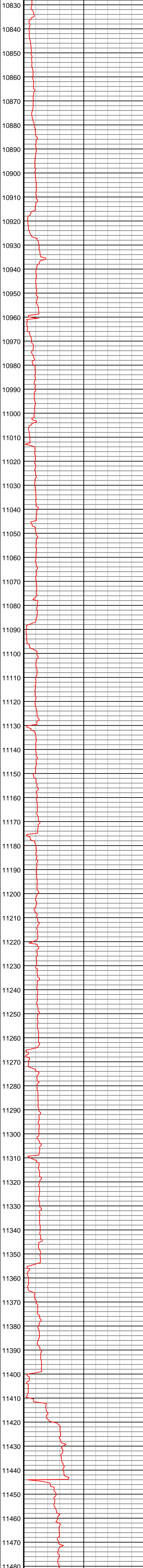
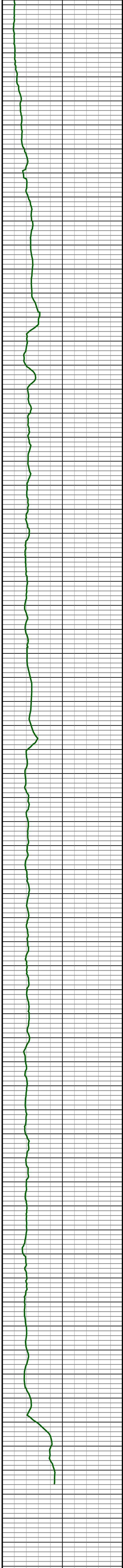
F240 MD103156 (0) 10286 (3) Azm(184.3) YD(6500.80)
US(236.29) NS(1739.47) EW(1485.69)

F241 MD103199 (0) 10286 (3) Azm(184.3) YD(6500.80)
US(236.29) NS(1739.47) EW(1485.69)

F242 MD103242 (0) 10286 (3) Azm(184.3) YD(6500.80)
US(236.29) NS(1739.47) EW(1485.69)

F243 MD103285 (0) 10286 (3) Azm(184.3) YD(6500.80)
US(236.29) NS(1739.47) EW(1485.69)

F244 MD103328 (0) 10286 (3) Azm(184.3) YD(6500.80)
US(236.29) NS(1739.47) EW(1485.69)



#210 MD(10864.00) Inc(90.4) Azm(184.8) TVD(6503.99)
VS(4307.14) NS(-4080.40) EW(1394.58)

#211 MD(10907.00) Inc(90.6) Azm(182.5) TVD(6503.61)
VS(4347.60) NS(-4123.31) EW(1391.85)

#212 MD(10950.00) Inc(90.0) Azm(182.5) TVD(6503.39)
VS(4388.35) NS(-4166.27) EW(1389.97)

#213 MD(10992.00) Inc(89.7) Azm(182.7) TVD(6503.75)
VS(4428.13) NS(-4208.22) EW(1388.07)

#214 MD(11035.00) Inc(89.2) Azm(185.8) TVD(6504.24)
VS(4468.44) NS(-4251.10) EW(1384.88)

#215 MD(11078.00) Inc(89.2) Azm(184.8) TVD(6504.65)
VS(4508.47) NS(-4293.91) EW(1380.91)

#216 MD(11123.00) Inc(89.4) Azm(185.0) TVD(6505.20)
VS(4550.47) NS(-4338.74) EW(1377.06)

#217 MD(11168.00) Inc(88.8) Azm(183.7) TVD(6505.91)
VS(4592.63) NS(-4383.60) EW(1373.65)

#218 MD(11212.00) Inc(88.7) Azm(183.0) TVD(6506.87)
VS(4634.10) NS(-4427.52) EW(1371.08)

#219 MD(11257.00) Inc(89.2) Azm(182.5) TVD(6507.69)
VS(4676.68) NS(-4472.46) EW(1368.92)

#220 MD(11302.00) Inc(87.5) Azm(181.1) TVD(6508.99)
VS(4719.48) NS(-4517.42) EW(1367.51)

#221 MD(11347.00) Inc(88.1) Azm(180.6) TVD(6510.72)
VS(4762.49) NS(-4562.38) EW(1366.84)

#222 MD(11391.00) Inc(87.2) Azm(179.2) TVD(6512.52)
VS(4804.75) NS(-4606.34) EW(1366.92)

#223 MD(11430.78) Inc(87.6) Azm(179.7) TVD(6514.33)
VS(4843.03) NS(-4646.08) EW(1367.30)

#224 MD(11436.00) Inc(87.6) Azm(179.7) TVD(6514.55)
VS(4848.05) NS(-4651.29) EW(1367.33)

