

Noble Energy

CO, Weld County (NAD 83 NZ)
Sec 34 Twn 9 N Rng 59 W
Remora LC34-725 Original Hole
05-123-40602
H&P 273

Schlumberger

Final Survey Report

25-Jan-2016

Well Coordinates: NAD83 Colorado State Plane, Northern Zone, US Feet

N 40° 42' 43.41600"	W 103° 57' 24.98400"
1505969.2 ftUS	3427758.3 ftUS

Ground Level:	4814.00 ft MSL
TVD Reference:	KB 24ft @ 4838.00 ft MSL
Local Coordinate Origin:	Remora LC34-725 well head
Vertical Section Azimuth:	181.948 ° (Grid North)
North Reference:	Grid North

DOX Version: 2.9

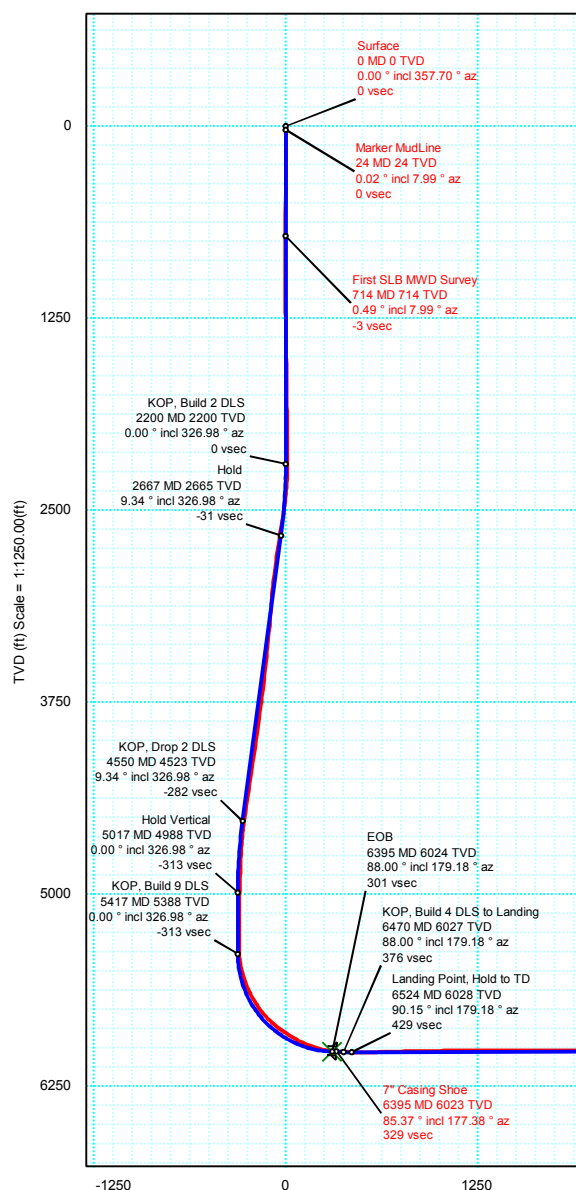
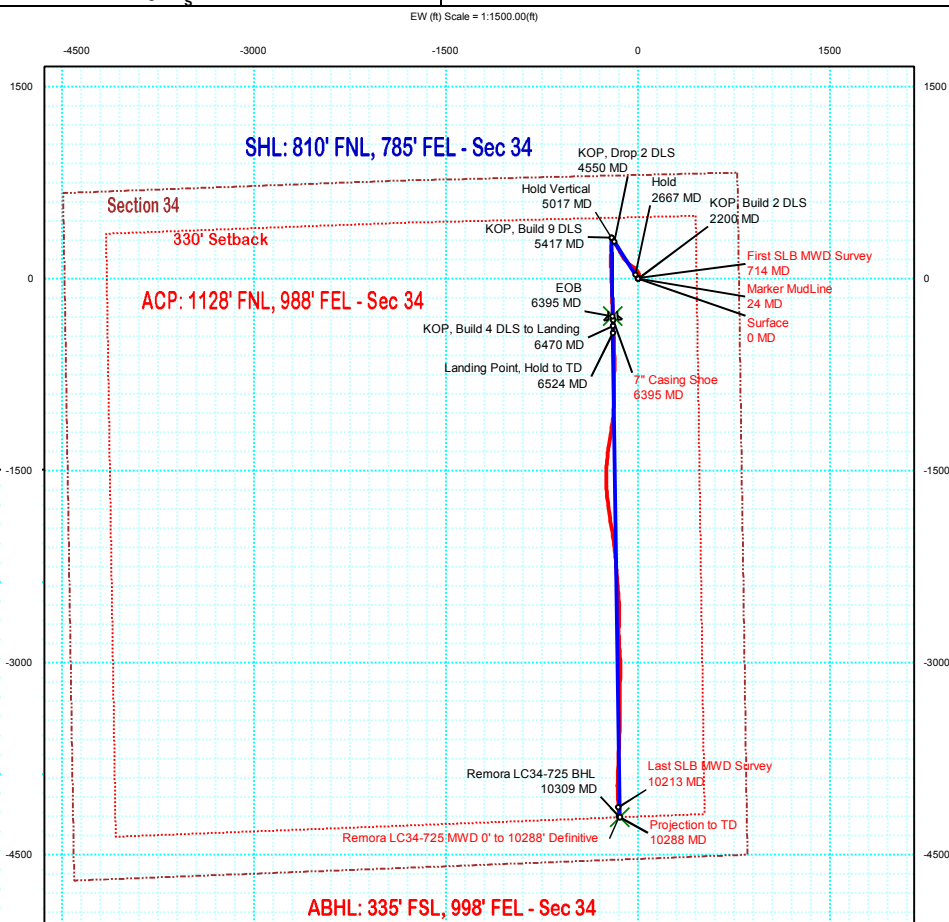
Borehole: Original Hole	Well: Remora LC34-725	Field: CO, Weld County (NAD 83 NZ)	Structure: 34-09N-59W (Remora LC34 Pad) - H&P 273
-----------------------------------	---------------------------------	--	---

Gravity & Magnetic Parameters	Surface Location	Miscellaneous
Model: HDGM 2015 Dip: 67.196° Date: 28-Dec-2015 MagDec: 7.99° FS: 52804.555nT Gravity FS: 999.09mgn (9.80665 Based)	NAD83 Colorado State Plane, Northern Zone, US Feet Lat: N 40 42 43.42 Northing: 1505968.52ftU Grid Conv: 0.9969° Lon: W 103 57 25.49 Easting: 3427719.49ftU Scale Fact: 0.99998921	Slot: Remora LC34-725 TVD Ref: KB 24ft(4838ft above MSL) Plan: Remora LC34-725 MWD 0' to 10288' Definitive

PvA



Grid North
Tot Corr (M->G 6.993°)
Mag Dec (7.990°)
Grid Conv (0.997°)



Surface Location								
Northing: 1505968.522		Easting: 3427719.491		Latitude: N 40 42 43.42		Longitude: W 103 57 25.49		VSec Azimuth: 181.948
Target Description	Grid Coord						Local Coord	
Target Name	Latitude	Longitude	Northing	Easting	TVD	VSec	N(+)S(-)	E(+)W(-)
Remora LC34 Pad Sec 34 - 330' Setback	N 40 42 43.42	W 103 57 24.98	1505969.20	3427758.30	4838.00	-1.99	0.68	38.81
Remora LC34 Pad Sec 34	N 40 42 43.42	W 103 57 24.98	1505969.20	3427758.30	4838.00	-1.99	0.68	38.81
Remora LC34-725 BHL	N 40 42 1.87	W 103 57 28.30	1501761.07	3427576.40	6003.30	4209.94	-4207.51	-143.09
Remora LC34-725 CP	N 40 42 40.54	W 103 57 28.14	1505674.18	3427520.29	6024.39	300.95	-294.35	-199.20
Critical Points								
Critical Point	MD	INCL	AZIM	TVD	VSEC	N(+)S(-)	E(+)W(-)	DLS
Surface	0.00	0.00	357.70	0.00	0.00	0.00	0.00	
Marker MudLine	24.00	0.02	7.99	24.00	0.00	0.00	0.00	0.07
First SLB MWD Survey	714.00	0.49	7.99	713.99	-3.04	3.02	0.42	0.07
7" Casing Shoe	6395.00	85.37	177.38	6022.63	328.80	-322.32	-196.10	4.86
Last SLB MWD Survey	10213.00	90.31	176.16	6015.61	4132.21	-4129.35	-154.21	1.08
Projection to TD	10288.00	90.31	176.16	6015.21	4206.82	-4204.18	-149.18	0.00

Critical Points								
Critical Point	MD	INCL	AZIM	TVD	VSEC	N(+)/S(-)	E(+)/W(-)	DLS
Surface	0.00	0.00	357.70	0.00	0.00	0.00	0.00	
Marker MudLine	24.00	0.02	7.99	24.00	0.00	0.00	0.00	0.07
First SLB MWD Survey	714.00	0.49	7.99	713.99	-3.04	3.02	0.42	0.07
7\" Casing Shoe	6395.00	85.37	177.38	6022.63	328.80	-322.32	-196.10	4.86
Last SLB MWD Survey	10213.00	90.31	176.16	6015.61	4132.21	-4129.35	-154.21	1.08
Projection to TD	10288.00	90.31	176.16	6015.21	4206.82	-4204.18	-149.18	0.00

Vertical Section (ft) Azim = 181.948° Scale = 1:1250.00(ft) Origin = 0N/-S, 0E/-W



Remora LC34-725 MWD 0' to 10288' Definitive Survey Geodetic Report

(Def Survey)

Report Date: January 25, 2016 - 12:08 PM
Client: Noble Energy
Field: CO, Weld County (NAD 83 NZ)
Structure / Slot: Noble 34-09N-59W (Remora LC34 Pad) - H&P 273 / Remora LC34-725
Well: Remora LC34-725
Borehole: Original Hole
UWI / API#: Unknown / Unknown
Survey Name: Remora LC34-725 MWD 0' to 10288' Definitive
Survey Date: January 17, 2016
Tort / AHD / DDI / ERD Ratio: 214.179 ° / 4949.299 ft / 6.257 / 0.821
Coordinate Reference System: NAD83 Colorado State Plane, Northern Zone, US Feet
Location Lat / Long: N 40° 42' 43.41600", W 103° 57' 25.48900"
Location Grid N/E Y/X: N 1505968.522 ftUS, E 3427719.491 ftUS
CRS Grid Convergence Angle: 0.9969 °
Grid Scale Factor: 0.99998921
Version / Patch: 2.9.355.0

Survey / DLS Computation: Minimum Curvature / Lubinski
Vertical Section Azimuth: 181.948 ° (Grid North)
Vertical Section Origin: 0.000 ft, 0.000 ft
TVD Reference Datum: KB 24ft
TVD Reference Elevation: 4838.000 ft above MSL
Seabed / Ground Elevation: 4814.000 ft above MSL
Magnetic Declination: 7.990 °
Total Gravity Field Strength: 999.0905mgn (9.80665 Based)
Gravity Model: GARM
Total Magnetic Field Strength: 52804.555 nT
Magnetic Dip Angle: 67.196 °
Declination Date: December 28, 2015
Magnetic Declination Model: HDGM 2015
North Reference: Grid North
Grid Convergence Used: 0.9969 °
Total Corr Mag North->Grid North: 6.9926 °
Local Coord Referenced To: Well Head

Comments	MD (ft)	Incl (°)	Azim Grid (°)	TVD (ft)	VSEC (ft)	NS (ft)	EW (ft)	DLS (°/100ft)	Northing (ftUS)	Easting (ftUS)	Latitude (N/S ° ' ")	Longitude (E/W ° ' ")
Surface	0.00	0.00	357.70	0.00	0.00	0.00	0.00	N/A	1505968.52	3427719.49	N 40 42 43.42	W 103 57 25.49
Marker MudLine	24.00	0.02	7.99	24.00	0.00	0.00	0.00	0.07	1505968.53	3427719.49	N 40 42 43.42	W 103 57 25.49
First SLB MWD Survey	714.00	0.49	7.99	713.99	-3.04	3.02	0.42	0.07	1505971.55	3427719.92	N 40 42 43.45	W 103 57 25.48
	809.00	0.36	24.39	808.99	-3.72	3.70	0.60	0.19	1505972.22	3427720.10	N 40 42 43.45	W 103 57 25.48
	903.00	0.14	260.06	902.99	-3.97	3.95	0.61	0.48	1505972.47	3427720.10	N 40 42 43.45	W 103 57 25.48
	1092.00	0.88	224.44	1091.98	-2.85	2.87	-0.63	0.41	1505971.39	3427718.86	N 40 42 43.44	W 103 57 25.50
	1183.00	0.80	225.70	1182.97	-1.87	1.93	-1.57	0.09	1505970.45	3427717.92	N 40 42 43.44	W 103 57 25.51
	1275.00	0.78	193.20	1274.96	-0.80	0.87	-2.18	0.48	1505969.39	3427717.31	N 40 42 43.42	W 103 57 25.52
	1367.00	1.01	179.90	1366.95	0.63	-0.55	-2.32	0.34	1505967.97	3427717.17	N 40 42 43.41	W 103 57 25.52
	1550.00	0.99	145.52	1549.92	3.51	-3.47	-1.42	0.32	1505965.06	3427718.07	N 40 42 43.38	W 103 57 25.51
	1733.00	0.68	164.20	1732.90	5.82	-5.81	-0.23	0.22	1505962.71	3427719.26	N 40 42 43.36	W 103 57 25.49
	1825.00	0.74	144.48	1824.90	6.81	-6.82	0.26	0.27	1505961.70	3427719.75	N 40 42 43.35	W 103 57 25.49
	1916.00	0.81	114.81	1915.89	7.53	-7.57	1.19	0.44	1505960.95	3427720.68	N 40 42 43.34	W 103 57 25.47
	2007.00	1.12	126.22	2006.88	8.28	-8.37	2.49	0.40	1505960.15	3427721.98	N 40 42 43.33	W 103 57 25.46
	2098.00	1.22	131.07	2097.86	9.39	-9.53	3.94	0.15	1505958.99	3427723.43	N 40 42 43.32	W 103 57 25.44
	2190.00	0.71	106.12	2189.84	10.15	-10.33	5.22	0.71	1505958.19	3427724.72	N 40 42 43.31	W 103 57 25.42
	2282.00	2.34	25.45	2281.82	8.56	-8.79	6.58	2.54	1505959.73	3427726.07	N 40 42 43.33	W 103 57 25.40
	2374.00	5.58	7.49	2373.59	2.39	-2.66	7.97	3.73	1505965.86	3427727.46	N 40 42 43.39	W 103 57 25.39
	2465.00	7.49	4.57	2463.99	-7.94	7.64	9.02	2.13	1505976.16	3427728.51	N 40 42 43.49	W 103 57 25.37
	2557.00	8.73	356.27	2555.07	-20.88	20.58	9.04	1.85	1505989.11	3427728.53	N 40 42 43.62	W 103 57 25.37
	2649.00	10.13	344.22	2645.84	-35.54	35.34	6.39	2.62	1506003.86	3427725.88	N 40 42 43.76	W 103 57 25.40
	2740.00	10.34	330.22	2735.40	-50.11	50.13	0.15	2.74	1506018.65	3427719.65	N 40 42 43.91	W 103 57 25.47
	2835.00	11.28	316.02	2828.73	-63.82	64.22	-10.53	2.96	1506032.74	3427708.96	N 40 42 44.05	W 103 57 25.61
	2929.00	10.44	316.85	2921.05	-76.23	77.05	-22.74	0.91	1506045.57	3427696.75	N 40 42 44.18	W 103 57 25.77
	3024.00	8.30	309.61	3014.78	-86.50	87.70	-33.91	2.57	1506056.22	3427685.58	N 40 42 44.29	W 103 57 25.91
	3119.00	8.66	303.52	3108.74	-94.43	96.02	-45.16	1.02	1506064.54	3427674.33	N 40 42 44.37	W 103 57 26.05
	3213.00	8.89	300.76	3201.64	-101.64	103.65	-57.30	0.51	1506072.17	3427662.19	N 40 42 44.45	W 103 57 26.21
	3308.00	8.38	313.41	3295.57	-109.76	112.16	-68.64	2.07	1506080.68	3427650.85	N 40 42 44.54	W 103 57 26.35
	3403.00	8.51	315.36	3389.54	-119.17	121.92	-78.61	0.33	1506090.44	3427640.89	N 40 42 44.63	W 103 57 26.48
	3498.00	8.70	317.13	3483.47	-129.10	132.18	-88.43	0.34	1506100.70	3427631.06	N 40 42 44.74	W 103 57 26.61
	3592.00	9.07	317.44	3576.35	-139.43	142.85	-98.28	0.40	1506111.37	3427621.21	N 40 42 44.84	W 103 57 26.73
	3687.00	9.55	316.33	3670.09	-150.28	154.07	-108.79	0.54	1506122.59	3427610.70	N 40 42 44.96	W 103 57 26.87
	3781.00	9.32	329.69	3762.83	-162.17	166.28	-118.02	2.34	1506134.80	3427601.48	N 40 42 45.08	W 103 57 26.98
	3876.00	9.04	329.71	3856.62	-174.99	179.37	-125.66	0.29	1506147.89	3427593.83	N 40 42 45.21	W 103 57 27.08
	3971.00	9.22	332.07	3950.41	-187.90	192.53	-132.99	0.44	1506161.05	3427586.50	N 40 42 45.34	W 103 57 27.17
	4066.00	9.34	331.69	4044.17	-201.16	206.05	-140.21	0.14	1506174.56	3427579.28	N 40 42 45.48	W 103 57 27.26
	4160.00	9.48	332.53	4136.91	-214.49	219.63	-147.40	0.21	1506188.15	3427572.09	N 40 42 45.61	W 103 57 27.35
	4254.00	9.81	330.96	4229.58	-228.10	233.50	-154.86	0.45	1506202.02	3427564.64	N 40 42 45.75	W 103 57 27.45
	4349.00	10.06	330.71	4323.15	-242.13	247.81	-162.85	0.27	1506216.33	3427556.65	N 40 42 45.89	W 103 57 27.55
	4444.00	10.05	329.15	4416.69	-256.19	262.16	-171.16	0.29	1506230.68	3427548.34	N 40 42 46.04	W 103 57 27.65
	4538.00	9.92	330.18	4509.27	-269.97	276.23	-179.39	0.23	1506244.75	3427540.11	N 40 42 46.18	W 103 57 27.75
	4633.00	7.45	318.66	4603.18	-281.42	287.96	-187.53	3.17	1506256.47	3427531.97	N 40 42 46.29	W 103 57 27.86
	4728.00	5.39	320.49	4697.58	-289.24	296.02	-194.43	2.18	1506264.54	3427525.06	N 40 42 46.37	W 103 57 27.95
	4822.00	2.68	330.47	4791.34	-294.43	301.34	-198.33	2.97	1506269.86	3427521.17	N 40 42 46.43	W 103 57 27.99
	4917.00	2.10	4.12	4886.26	-298.06	305.01	-199.30	1.57	1506273.53	3427520.20	N 40 42 46.46	W 103 57 28.01
	5011.00	1.97	11.10	4980.20	-301.38	308.31	-198.86	0.30	1506276.83	3427520.63	N 40 42 46.50	W 103 57 28.00
	5105.00	1.02	319.65	5074.17	-303.59	310.54	-199.09	1.65	1506279.06	3427520.40	N 40 42 46.52	W 103 57 28.00
	5199.00	0.54	303.09	5168.16	-304.44	311.42	-200.01	0.56	1506279.94	3427519.49	N 40 42 46.53	W 103 57 28.01
	5294.00	0.35	289.33	5263.16	-304.76	311.76	-200.65	0.23	1506280.28	3427518.84	N 40 42 46.53	W 103 57 28.02
	5388.00	0.24	128.00	5357.16	-304.73	311.73	-200.77	0.62	1506280.25	3427518.72	N 40 42 46.53	W 103 57 28.02
	5482.00	9.95	191.42	5450.68	-296.58	303.63	-202.23	10.47	1506272.15	3427517.27	N 40 42 46.45	W 103 57 28.05
	5577.00	17.29	186.42	5542.95	-274.38	281.53	-205.44	7.82	1506250.04	3427514.06	N 40 42 46.23	W 103 57 28.09
	5671.00	25.85	183.92	5630.29	-239.91	247.13	-208.40	9.16	1506215.65	3427511.09	N 40 42 45.89	W 103 57 28.14
	5766.00	32.39	183.49	5713.23	-193.72	201.02	-211.37	6.89	1506169.54	3427508.12	N 40 42 45.44	W 103 57 28.19
	5859.00	41.68	179.62	5787.40	-137.80	145.11	-212.69	10.29	1506113.63	3427506.81	N 40 42 44.89	W 103 57 28.22
	5953.00	50.57	177.96	5852.49	-70.22	77.44	-211.18	9.54	1506045.96	3427508.31	N 40 42 44.22	W 103 57 28.21
	6047.00	57.60	177.59	5907.59	5.66	1.42	-208.22	7.49	1505969.94	3427511.28	N 40 42 43.47	W 103 57 28.19
	6142.00	62.27	178.13	5955.17	87.65	-80.72	-205.16	4.94	1505887.80	3427514.34	N 40 42 42.65	W 103 57 28.17
	6236.00	70.72	178.18	5992.63	173.58	-166.80	-202.39	8.99	1505801.72	3427517.11	N 40 42 41.80	W 103 57 28.15
	6331.00	81.30	177.74	6015.56	265.41	-258.79	-199.10	11.15	1505709.73	3427520.39	N 40 42 40.89	W 103 57 28.13
	6353.00	83.35	177.08	6018.50	287.14	-280.57	-198.12	9.78	1505687.95	3427521.38	N 40 42 40.68	W 103 57 28.12
7" Casing Shoe	6395.00	85.37	177.38	6022.63	328.80	-322.32	-196.10	4.86	1505646.21	3427523.40	N 40 42 40.27	W 103 57 28.11
	6440.00	87.53	177.69	6025.42	373.57	-367.19	-194.16	4.86	1505601.34	3427525.33	N 40 42 39.82	W 103 57 28.09
	6531.00	88.08	177.80	6028.90	464.26	-458.05	-190.58	0.62	1505510.48	3427528.91	N 40 42 38.92	W 103 57 28.07
	6623.00	92.17	178.53	6028.70	556.04	-549.98	-187.64	4.52	1505418.55	3427531.85	N 40 42 38.01	W 103 57 28.05
	6718.00	91.79	179.37	6025.42	650.85	-644.91	-185.90	0.97	1505323.62	3427533.59	N 40 42 37.08	W 103 57 28.05
	6813.00	90.86	181.58	6023.22	745.79	-739.87	-186.69	2.52	1505228.66	3427532.81	N 40 42 36.14	W 103 57 28.08
	6907.00	91.00	180.97	6021.70	839.77	-833.84	-188.78	0.67	1505134.70	3427530.72	N 40 42 35.21	W 103 57 28.13
	7002.00	90.76	180.29	6020.24	934.73	-928.82	-189.82	0.76	1505039.72	3427529.67	N 40 42 34.27	W 103 57 28.16
	7097.00	91.00	182.79	6018.78	1029.71	-1023.76	-192.37	2.64	1504944.77	3427527.12	N 40 42 33.33	W 103 57 28.22
	7191.00	89.79	187.04	6018.13	1123.56	-1117.39	-200.43	4.70	1504851.14	3427519.07	N 40 42 32.41	W 103

Comments	MD (ft)	Incl (°)	Azim Grid (°)	TVD (ft)	VSEC (ft)	NS (ft)	EW (ft)	DLS (%/100ft)	Northing (ftUS)	Easting (ftUS)	Latitude (N/S ° ' ")	Longitude (E/W ° ' ")
	7759.00	89.93	174.45	6018.46	1689.21	-1681.89	-244.06	4.43	1504286.66	3427475.44	N 40 42 26.84	W 103 57 29.04
	7854.00	90.21	171.87	6018.35	1783.09	-1776.20	-232.74	2.73	1504192.34	3427486.75	N 40 42 25.91	W 103 57 28.91
	7949.00	90.00	172.47	6018.17	1876.71	-1870.32	-219.80	0.67	1504098.23	3427499.69	N 40 42 24.98	W 103 57 28.76
	8043.00	90.03	170.09	6018.15	1969.08	-1963.22	-205.55	2.53	1504005.32	3427513.94	N 40 42 24.06	W 103 57 28.60
	8138.00	90.07	172.09	6018.06	2062.37	-2057.07	-190.84	2.11	1503911.48	3427528.66	N 40 42 23.13	W 103 57 28.43
	8232.00	89.76	174.37	6018.20	2155.28	-2150.41	-179.76	2.45	1503818.14	3427539.74	N 40 42 22.20	W 103 57 28.31
	8327.00	90.03	175.76	6018.38	2249.59	-2245.06	-171.59	1.49	1503723.49	3427547.91	N 40 42 21.27	W 103 57 28.22
	8421.00	89.73	175.44	6018.58	2343.01	-2338.78	-164.37	0.47	1503629.77	3427555.12	N 40 42 20.34	W 103 57 28.15
	8516.00	90.27	175.26	6018.58	2437.38	-2433.47	-156.67	0.60	1503535.09	3427562.82	N 40 42 19.40	W 103 57 28.07
	8611.00	89.97	177.93	6018.38	2531.96	-2528.29	-151.03	2.83	1503440.27	3427568.46	N 40 42 18.46	W 103 57 28.02
	8705.00	90.00	180.58	6018.40	2625.85	-2622.27	-149.81	2.82	1503346.28	3427569.68	N 40 42 17.53	W 103 57 28.03
	8800.00	90.24	181.11	6018.20	2720.83	-2717.26	-151.21	0.61	1503251.29	3427568.28	N 40 42 16.60	W 103 57 28.06
	8894.00	90.10	178.22	6017.92	2814.75	-2811.25	-150.66	3.08	1503157.31	3427568.83	N 40 42 15.67	W 103 57 28.08
	8988.00	90.28	175.47	6017.61	2908.36	-2905.10	-145.49	2.93	1503063.46	3427574.01	N 40 42 14.74	W 103 57 28.03
	9083.00	89.83	178.21	6017.52	3002.98	-2999.94	-140.25	2.92	1502968.62	3427579.24	N 40 42 13.80	W 103 57 27.99
	9177.00	89.83	181.89	6017.80	3096.91	-3093.93	-140.33	3.91	1502874.63	3427579.16	N 40 42 12.87	W 103 57 28.01
	9271.00	90.24	181.40	6017.74	3190.91	-3187.89	-143.03	0.68	1502780.67	3427576.46	N 40 42 11.95	W 103 57 28.06
	9365.00	90.34	179.36	6017.27	3284.87	-3281.88	-143.65	2.17	1502686.68	3427575.84	N 40 42 11.02	W 103 57 28.09
	9460.00	89.93	180.86	6017.04	3379.81	-3376.88	-143.84	1.64	1502591.69	3427575.66	N 40 42 10.08	W 103 57 28.12
	9554.00	90.17	181.03	6016.96	3473.80	-3470.86	-145.39	0.31	1502497.70	3427574.11	N 40 42 9.15	W 103 57 28.16
	9649.00	89.93	180.63	6016.88	3568.78	-3565.85	-146.76	0.49	1502402.71	3427572.73	N 40 42 8.21	W 103 57 28.20
	9743.00	90.07	182.55	6016.88	3662.78	-3659.81	-149.37	2.05	1502308.76	3427570.12	N 40 42 7.28	W 103 57 28.25
	9836.00	90.10	182.83	6016.74	3755.77	-3752.71	-153.74	0.30	1502215.86	3427565.76	N 40 42 6.37	W 103 57 28.33
	9931.00	90.10	182.82	6016.57	3850.76	-3847.59	-158.42	0.01	1502120.98	3427561.07	N 40 42 5.43	W 103 57 28.41
	10025.00	90.21	180.77	6016.32	3944.75	-3941.54	-161.36	2.18	1502027.03	3427558.13	N 40 42 4.50	W 103 57 28.47
	10119.00	90.17	177.17	6016.01	4038.61	-4035.51	-159.67	3.83	1501933.06	3427559.82	N 40 42 3.57	W 103 57 28.47
Last SLB MWD Survey	10213.00	90.31	176.16	6015.61	4132.21	-4129.35	-154.21	1.08	1501839.22	3427565.29	N 40 42 2.65	W 103 57 28.42
Projection to TD	10288.00	90.31	176.16	6015.21	4206.82	-4204.18	-149.18	0.00	1501764.39	3427570.31	N 40 42 1.91	W 103 57 28.37

Survey Type: Def Survey

Survey Error Model: ISCWSA Rev 0 *** 3-D 95.000% Confidence 2.7955 sigma
Survey Program:

Description	Part	MD From (ft)	MD To (ft)	EOU Freq (ft)	Hole Size	Casing Diameter (in)	Survey Tool Type	Borehole / Survey
Surface	1	0.000	24.000	Act Stns	13.750	9.625	SLB_MWD-STD-Depth Only	Original Hole / Remora LC34-725 MWD 0' to 10288' Definitive
Surface	1	24.000	631.000	1/98.425	13.750	9.625	SLB_MWD-STD	Original Hole / Remora LC34-725 MWD 0' to 10288' Definitive
Intermediate	1	631.000	6400.000	Act Stns	8.750	7.000	SLB_MWD-STD	Original Hole / Remora LC34-725 MWD 0' to 10288' Definitive
Lateral	1	6400.000	10213.000	Act Stns	6.125	4.500	SLB_MWD-STD	Original Hole / Remora LC34-725 MWD 0' to 10288' Definitive
Projection to TD	1	10213.000	10288.000	Act Stns	6.125	4.500	SLB_BLIND+TREND	Original Hole / Remora LC34-725 MWD 0' to 10288' Definitive