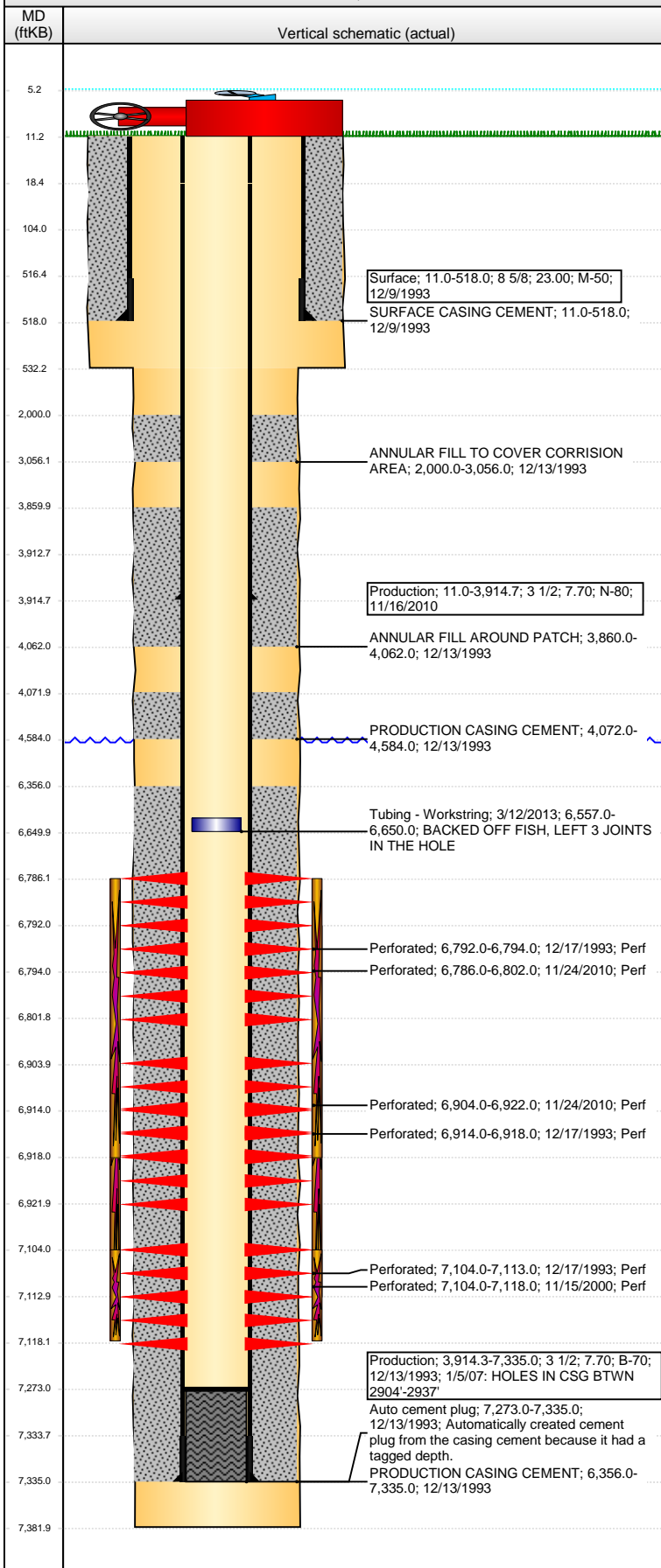


**Well Name: BACKUS 04-16**

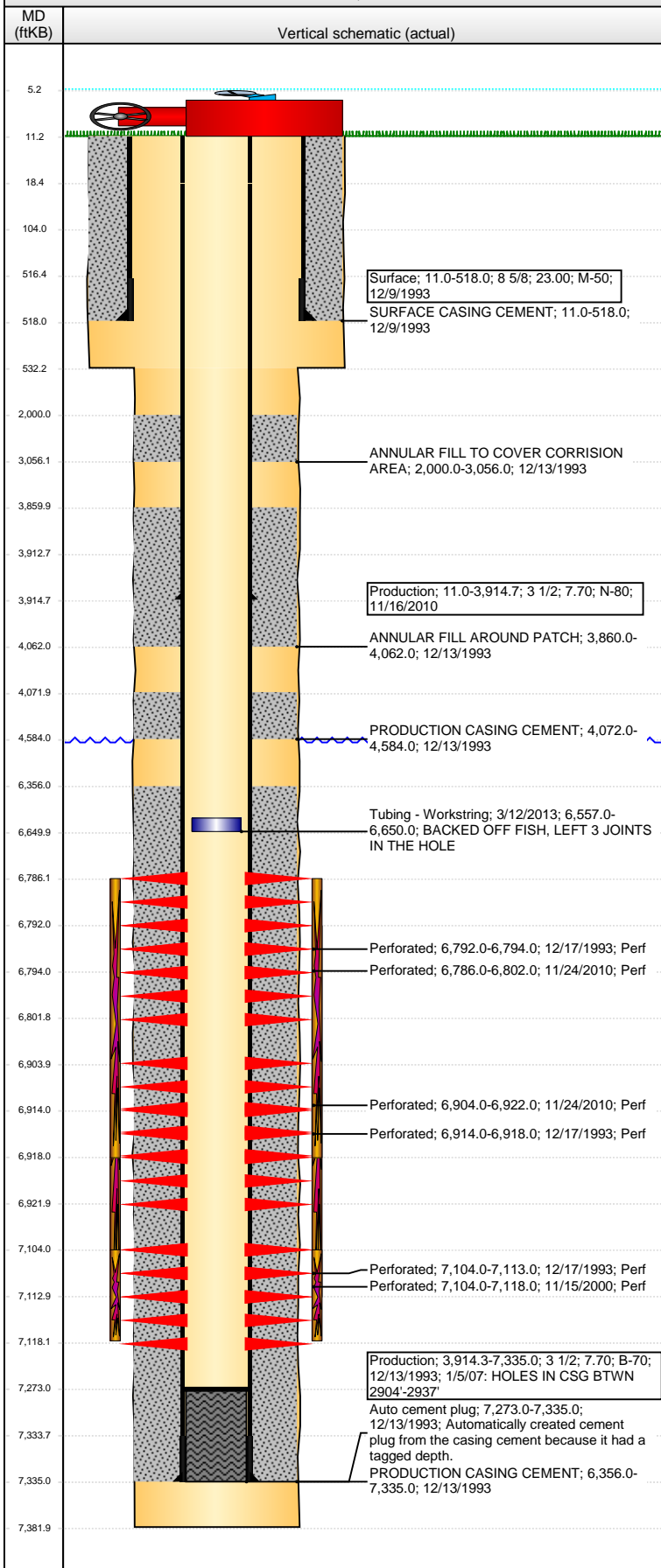
VERTICAL - ORIGINAL HOLE, 3/24/2016 10:56:06 AM



Well Header			
API	Business Unit	District	Well Config
05-123-17625	DJ BASIN	15	VERTICAL
Original KB Elevation (ft)	KB - GL / MSL (ftKB)	Spud Date	P & A Date
4,682	11.00	12/8/1993	
Comment			
CSG PATCH 11-16-2010 @ 3920'			
FISH LEFT IN THE HOLE FROM HORIZONTAL WELL PREP			
Directions To Well			
WCR 48 & WCR 43, N .2, W 100 YARDS, S INTO			
Congressional Location			
Quarter 1	Quarter 2	Quarter 3	Quarter 4
	SE	SE	
Section	Township	Twntshp N...	Range
4	4	N	65
Rng E/W Dir			W
Bottom Hole Location			
North-South Distance (ft)	From N or S Line	East-West Distance (ft)	From E or W Line
647.0	FSL	661.0	FEL
Plug Back Total Depths			
Date	Depth (ftKB)	Method	Com
12/13/1993	7,273.0	TAG	GUIDE SHOE
12/17/1993	7,264.0	CASED HOLE LOG	CBL DEPTH LOGGER
11/22/2010	7,273.0	TAG	CLEANED OUT AFTER CSG RPR
Wellbore Sections			
Section Des	Size (in)	Act Top, MD (ftKB)	Act Btm, MD (ftKB)
SURFACE	12 1/4	11.0	532.0
PRODUCTION	7 7/8	532.0	7,382.0
Zone Statuses			
Zone Name	Status Date	Status	Fluid Type
CODELL	12/30/1993	PR	Gas
CODELL	11/23/2000	PR	Gas
CODELL	3/29/2008	SI	
CODELL	11/23/2010	SI	
CODELL	2/11/2011	PR	
NIOBRARA	12/30/1993	PR	Gas
NIOBRARA	3/29/2008	SI	
NIOBRARA	12/8/2010	PR	
Job			
DRILLING/CO...			
RE-FRAC, 11/1...			
RE-FRAC, 1/2/...			
RE-FRAC, 11/9...			
RE-FRAC, 11/9...			
RE-FRAC, 1/2/...			
RE-FRAC, 11/9...			
Prod Method			
New Activity - Waiting Production			
Casing Strings			
Surface, 518.0ftKB			
Casing Description	Run Date	OD (in)	Wt/Len (l...)
Surface	12/9/1993	8 5/8	23.00
Grade	Top, MD (ft...)	MD (ftKB)	
M-50	11.0	518.0	
Production, 3,914.7ftKB			
Casing Description	Run Date	OD (in)	Wt/Len (l...)
Production	11/16/2010	3 1/2	7.70
Grade	Top, MD (ft...)	MD (ftKB)	
N-80	11.0	3,914.7	
Production, 7,335.0ftKB			
Casing Description	Run Date	OD (in)	Wt/Len (l...)
Production	12/13/1993	3 1/2	7.70
Grade	Top, MD (ft...)	MD (ftKB)	
B-70	11.0	7,335.0	
Cement			
Description	Top Depth (ftKB)	Bottom Depth (ftKB)	
SURFACE CASING CEMENT	11.0	518.0	
Description	Top Depth (ftKB)	Bottom Depth (ftKB)	
ANNULAR FILL TO COVER CORRISION AREA	2,000.0	3,056.0	
Description	Top Depth (ftKB)	Bottom Depth (ftKB)	
ANNULAR FILL AROUND PATCH	3,860.0	4,062.0	
Description	Top Depth (ftKB)	Bottom Depth (ftKB)	
PRODUCTION CASING CEMENT	4,072.0	4,584.0	
Description	Top Depth (ftKB)	Bottom Depth (ftKB)	
PRODUCTION CASING CEMENT	6,356.0	7,335.0	
Tubing Strings			
Tubing Description	Run Date	String...	ID (in)
Tubing - Production	1/10/2007	2 1/16	1.751
Wt (lb/ft)	Grade	Len (ft)	Set De...
3.25	J-55	7,059.00	
Tubing Description	Run Date	String...	ID (in)
Tubing - Frac string	11/24/2010	2 3/8	1.995
Wt (lb/ft)	Grade	Len (ft)	Set De...
4.70	N-80	6,712.47	
Tubing Description	Run Date	String...	ID (in)
Tubing - Production	2/8/2011	2 1/16	1.751
Wt (lb/ft)	Grade	Len (ft)	Set De...
3.25	J-55	7,071.69	
Tubing Description	Run Date	String...	ID (in)
Tubing - Workstring	3/12/2013	2 3/8	
Wt (lb/ft)	Grade	Len (ft)	Set De...
		6,546.00	

**Well Name: BACKUS 04-16**

VERTICAL - ORIGINAL HOLE, 3/24/2016 10:56:08 AM



Tubing Components							
Item Des	OD (in)	Wt (lb/ft)	Grade	Jts	Len (ft)	Btm (ftKB)	Btm (TVD) (ftKB)
Tubing	2 3/8				6,546.00	6,650.0	

Perforation Data					
Zone	Bnch/St g	Entered Shot Total	Top (ftKB)	Btm (ftKB)	Date
NIOBRARA, ORIGINAL HOLE	A	64	6,786.00	6,802.00	11/24/2010
NIOBRARA, ORIGINAL HOLE	A	2	6,792.00	6,794.00	12/17/1993
NIOBRARA, ORIGINAL HOLE	B	72	6,904.00	6,922.00	11/24/2010
NIOBRARA, ORIGINAL HOLE	B	4	6,914.00	6,918.00	12/17/1993
CODELL, ORIGINAL HOLE		56	7,104.00	7,118.00	11/15/2000
CODELL, ORIGINAL HOLE		9	7,104.00	7,113.00	12/17/1993

Stimulations & Treatments		
Date	Zone	Primary Job Type
12/20/1993	NIOBRARA-CODELL, ORIGINAL HOLE	DRILLING/COMPLETION - ORIGINAL
Technical Result	Tech Result Details	Tech Result Note

Comment C/N FRAC'D LIMITED ENTRY		
Date	Zone	Primary Job Type
11/20/2000	CODELL, ORIGINAL HOLE	RE-FRAC
Technical Result	Tech Result Details	Tech Result Note

Comment		
Date	Zone	Primary Job Type
12/6/2010	NIOBRARA, ORIGINAL HOLE	RE-FRAC
Technical Result	Tech Result Details	Tech Result Note
Success	According to Plan	

Comment  
(NIOBRARA RF) HAD ISSUES WITH FRAC PUMPS KICKING OUT DURING SLICKWATER PAD DUE TO HIGH PRESSURE. HAD TO SHUT DOWN DURING 2LB STG, POP-OFF WASHED OUT. WE WERE DOWN FOR APPROX 7 MIN, STARTED BACK WITH X-LINK FLUID FOR A WELLBORE AND WENT BACK TO 2LB 30/50 SAND. AVG VISC=19.45, PH=10.5, TEMP=68, PRESS=8037, RATE=16.2.

Other In Hole				
Run Date	Des	OD (in)	Top (ftKB)	Btm (ftKB)

Logs			
Date	Type	Top, MD (ftKB)	Btm, MD (ftKB)
12/12/1993	COMPENSATED DENSITY	4,250.0	7,348.0
12/12/1993	INDUCTION	522.0	7,352.0
12/17/1993	CEMENT BOND	3,930.0	7,260.0
11/22/2010	CBL/CCL/GR	1,600.0	4,600.0