

BONANZA CREEK ENERGY INC.

WELD COUNTY, COLORADO (NAD 83)

SE SE SEC. 21 T5N R62W 6th P.M.

STATE ANTELOPE 44-21-16XRLNB

ORIGINAL WELLBORE

12 January, 2016

Plan: PROPOSAL #3

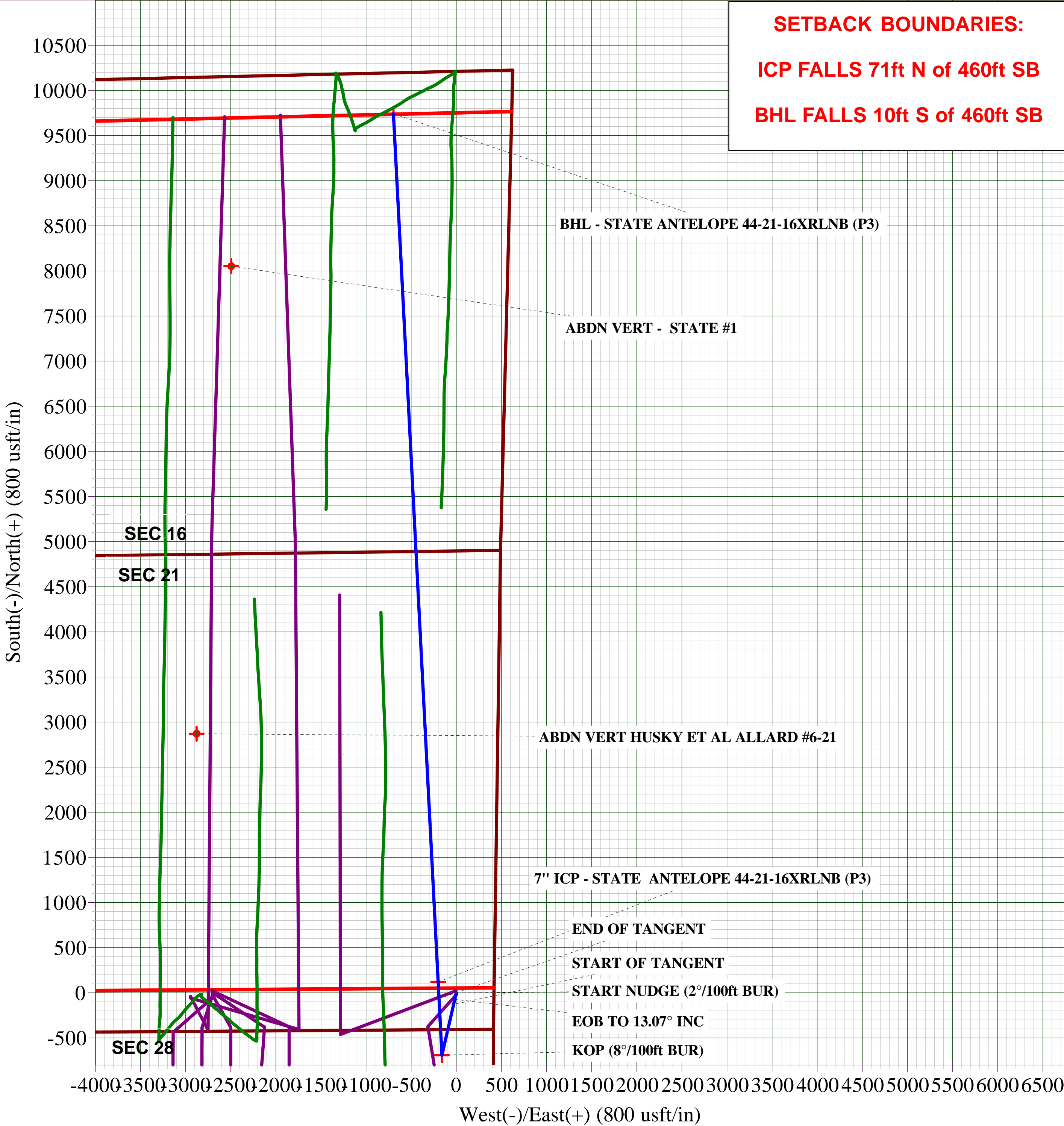
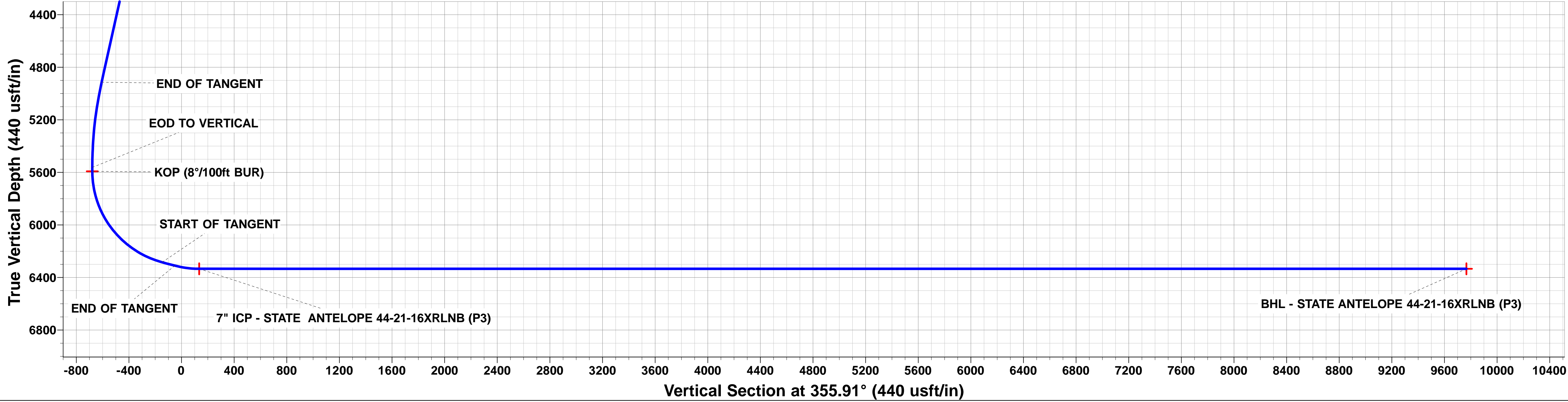
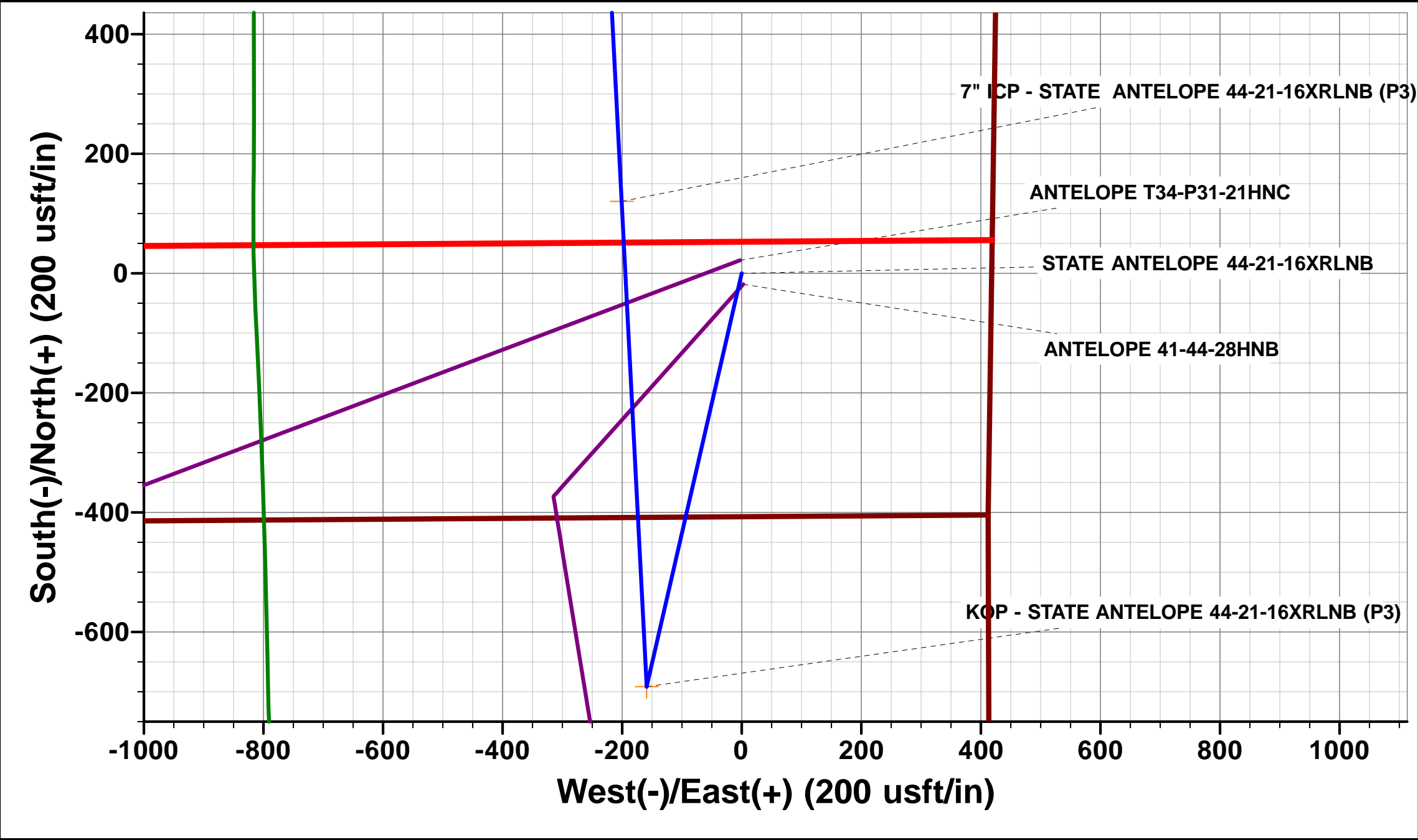
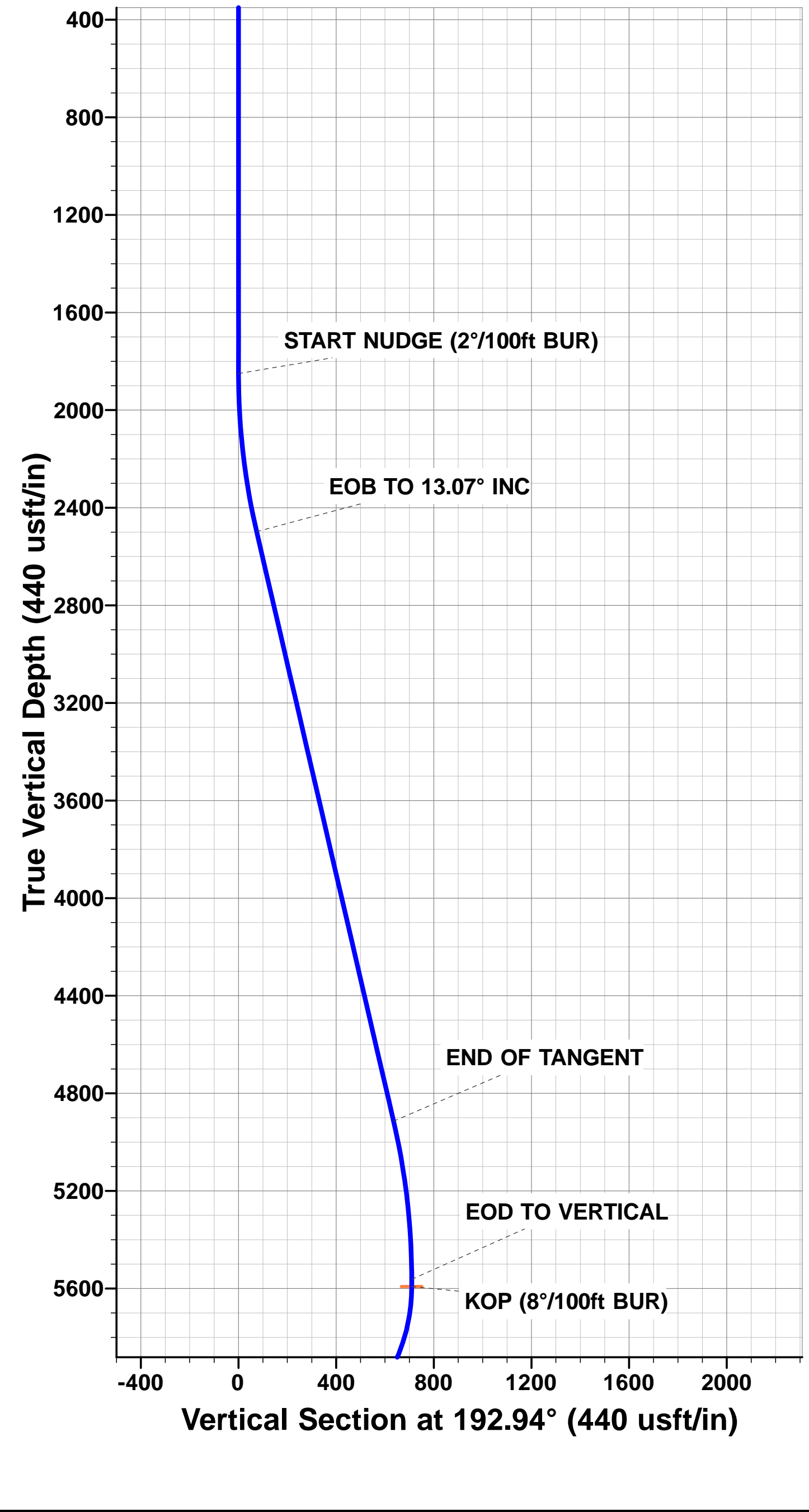




Project: WELD COUNTY, COLORADO (NAD 83)
Site: SE SE SEC. 21 T5N R62W 6th P.M.
Well: STATE ANTELOPE 44-21-16XRLNB
Wellbore: ORIGINAL WELLBORE
Design: PROPOSAL #3

ANNOTATIONS										PROPOSED LOCAL COORDINATES: SHL: 410ft FSL & 419ft FWL Sec 21 7" ICP: 531ft FSL & 622ft FeL Sec 21 BHL: 470ft FNL & 1312ft FeL Sec 16
TVD	MD	Inc	Azi	+N/-S	+E/-W	VSect	Dep	Annotation		
1850.0	1850.0	0.00	0.00	0.0	0.0	0.0	0.0	START NUDGE (2°/100ft BUR)		
2497.9	2503.6	13.07	192.94	-72.4	-16.6	-71.0	74.2	EOB TO 13.07° INC		
4914.0	4983.9	13.07	192.94	-619.1	-142.3	-607.3	635.2	END OF TANGENT		
5561.9	5637.5	0.00	0.00	-691.4	-158.9	-678.3	709.4	EOD TO VERTICAL		
5591.9	5667.5	0.00	0.00	-691.4	-158.9	-678.3	709.4	KOP (8°/100ft BUR)		
6283.7	6605.0	75.00	357.05	-161.2	-186.2	-147.6	1240.3	START OF TANGENT		
6309.6	6705.0	75.00	357.05	-64.8	-191.2	-51.0	1336.9	END OF TANGENT		
6334.0	6892.5	90.00	357.05	120.3	-200.7	134.3	1522.2	7" ICP - ANTELOPE 44-21-16XRLNB (P3)		
6334.0	16526.6	90.00	357.05	9741.7	-696.2	9766.5	11156.3	BHL - ANTELOPE 44-21-16XRLNB (P3)		

WELLBORE TARGET DETAILS (LAT/LONG)						
Name		TVD	+N/-S	+E/-W	Latitude	Longitude
KOP - STATE ANTELOPE 44-21-16XRLNB (P3)		5591.9	-691.4	-158.9	40.377222	-104.321660
7" ICP - STATE ANTELOPE 44-21-16XRLNB (P3)		6334.0	120.2	-200.6	40.379450	-104.321810
BHL - STATE ANTELOPE 44-21-16XRLNB (P3)		6334.0	9741.7	-696.2	40.405860	-104.323590



SETBACK BOUNDARIES:
ICP FALLS 71ft N of 460ft SB
BHL FALLS 10ft S of 460ft SB

Database:	EDM 5000.1 Single User Db	Local Co-ordinate Reference:	Well STATE ANTELOPE 44-21-16XRLNB
Company:	BONANZA CREEK ENERGY INC.	TVD Reference:	KB-EST @ 4699.0usft (Original Well Elev)
Project:	WELD COUNTY, COLORADO (NAD 83)	MD Reference:	KB-EST @ 4699.0usft (Original Well Elev)
Site:	SE SE SEC. 21 T5N R62W 6th P.M.	North Reference:	True
Well:	STATE ANTELOPE 44-21-16XRLNB	Survey Calculation Method:	Minimum Curvature
Wellbore:	ORIGINAL WELLBORE		
Design:	PROPOSAL #3		

Project	WELD COUNTY, COLORADO (NAD 83)		
Map System:	US State Plane 1983	System Datum:	Mean Sea Level
Geo Datum:	North American Datum 1983		
Map Zone:	Colorado Northern Zone		Using geodetic scale factor

Site	SE SE SEC. 21 T5N R62W 6th P.M.		
Site Position:		Northing:	1,383,089.52 usft
From:	Lat/Long	Easting:	3,327,589.29 usft
Position Uncertainty:	0.0 usft	Slot Radius:	1.10000ft
		Latitude:	40.379020
		Longitude:	-104.324110
		Grid Convergence:	0.76 °

Well	STATE ANTELOPE 44-21-16XRLNB					
Well Position	+N-S	36.4 usft	Northing:	1,383,137.10 usft	Latitude:	40.379120
	+E-W	841.4 usft	Easting:	3,328,430.10 usft	Longitude:	-104.321090
Position Uncertainty		0.0 usft	Wellhead Elevation:	usft	Ground Level:	4,682.0 usft

Wellbore	ORIGINAL WELLBORE				
Magnetics	Model Name	Sample Date	Declination (°)	Dip Angle (°)	Field Strength (nT)
	IGRF2015	16/10/2015	8.15	66.95	52,619

Design	PROPOSAL #3			
Audit Notes:				
Version:	Phase:	PROTOTYPE	Tie On Depth:	0.0
Vertical Section:	Depth From (TVD) (usft)	+N-S (usft)	+E-W (usft)	Direction (°)
	0.0	0.0	0.0	355.91

Plan Sections											
MD (usft)	Inc (°)	Azi (°)	Vertical Depth	SS (usft)	+N-S (usft)	+E-W (usft)	Dogleg Rate (°/100usf)	Build Rate (°/100usf)	Turn Rate (°/100usf)	TFO (°)	Target
0.0	0.00	0.00	0.0	-4,699.0	0.0	0.0	0.00	0.00	0.00	0.00	
1,850.0	0.00	0.00	1,850.0	-2,849.0	0.0	0.0	0.00	0.00	0.00	0.00	
2,503.6	13.07	192.94	2,497.9	-2,201.1	-72.3	-16.6	2.00	2.00	0.00	192.94	
4,983.9	13.07	192.94	4,914.0	215.0	-619.1	-142.3	0.00	0.00	0.00	0.00	
5,637.5	0.00	0.00	5,561.9	862.9	-691.4	-158.9	2.00	-2.00	0.00	180.00	
5,667.5	0.00	0.00	5,591.9	892.9	-691.4	-158.9	0.00	0.00	0.00	0.00	KOP - STATE ANTI
6,605.0	75.00	357.05	6,283.7	1,584.7	-161.3	-186.2	8.00	8.00	0.00	357.05	
6,705.0	75.00	357.05	6,309.6	1,610.6	-64.8	-191.2	0.00	0.00	0.00	0.00	
6,892.5	90.00	357.05	6,334.0	1,635.0	120.3	-200.7	8.00	8.00	0.00	0.00	
16,526.6	90.00	357.05	6,334.0	1,635.0	9,741.7	-696.2	0.00	0.00	0.00	93.95	BHL - STATE ANTI

Database:	EDM 5000.1 Single User Db	Local Co-ordinate Reference:	Well STATE ANTELOPE 44-21-16XRLNB
Company:	BONANZA CREEK ENERGY INC.	TVD Reference:	KB-EST @ 4699.0usft (Original Well Elev)
Project:	WELD COUNTY, COLORADO (NAD 83)	MD Reference:	KB-EST @ 4699.0usft (Original Well Elev)
Site:	SE SE SEC. 21 T5N R62W 6th P.M.	North Reference:	True
Well:	STATE ANTELOPE 44-21-16XRLNB	Survey Calculation Method:	Minimum Curvature
Wellbore:	ORIGINAL WELLBORE		
Design:	PROPOSAL #3		

Planned Survey

MD (usft)	Inc (°)	Azi (°)	TVD (usft)	SS (usft)	+N/-S (usft)	+E/-W (usft)	Vertical Section (usft)	Dogleg Rate (°/100usft)	Build Rate (°/100usft)	Turn Rate (°/100usft)
0.0	0.00	0.00	0.0	4,699.00	0.0	0.0	0.0	0.00	0.00	0.00
100.0	0.00	0.00	100.0	4,599.00	0.0	0.0	0.0	0.00	0.00	0.00
200.0	0.00	0.00	200.0	4,499.00	0.0	0.0	0.0	0.00	0.00	0.00
300.0	0.00	0.00	300.0	4,399.00	0.0	0.0	0.0	0.00	0.00	0.00
400.0	0.00	0.00	400.0	4,299.00	0.0	0.0	0.0	0.00	0.00	0.00
500.0	0.00	0.00	500.0	4,199.00	0.0	0.0	0.0	0.00	0.00	0.00
600.0	0.00	0.00	600.0	4,099.00	0.0	0.0	0.0	0.00	0.00	0.00
700.0	0.00	0.00	700.0	3,999.00	0.0	0.0	0.0	0.00	0.00	0.00
800.0	0.00	0.00	800.0	3,899.00	0.0	0.0	0.0	0.00	0.00	0.00
900.0	0.00	0.00	900.0	3,799.00	0.0	0.0	0.0	0.00	0.00	0.00
1,000.0	0.00	0.00	1,000.0	3,699.00	0.0	0.0	0.0	0.00	0.00	0.00
1,100.0	0.00	0.00	1,100.0	3,599.00	0.0	0.0	0.0	0.00	0.00	0.00
1,200.0	0.00	0.00	1,200.0	3,499.00	0.0	0.0	0.0	0.00	0.00	0.00
1,300.0	0.00	0.00	1,300.0	3,399.00	0.0	0.0	0.0	0.00	0.00	0.00
1,400.0	0.00	0.00	1,400.0	3,299.00	0.0	0.0	0.0	0.00	0.00	0.00
1,500.0	0.00	0.00	1,500.0	3,199.00	0.0	0.0	0.0	0.00	0.00	0.00
1,600.0	0.00	0.00	1,600.0	3,099.00	0.0	0.0	0.0	0.00	0.00	0.00
1,700.0	0.00	0.00	1,700.0	2,999.00	0.0	0.0	0.0	0.00	0.00	0.00
1,800.0	0.00	0.00	1,800.0	2,899.00	0.0	0.0	0.0	0.00	0.00	0.00
START NUDGE (2°/100ft BUR)										
1,850.0	0.00	0.00	1,850.0	2,849.00	0.0	0.0	0.0	0.00	0.00	0.00
1,900.0	1.00	192.94	1,900.0	2,799.00	-0.4	-0.1	-0.4	2.00	2.00	0.00
2,000.0	3.00	192.94	1,999.9	2,699.07	-3.8	-0.9	-3.8	2.00	2.00	0.00
2,100.0	5.00	192.94	2,099.7	2,599.32	-10.6	-2.4	-10.4	2.00	2.00	0.00
2,200.0	7.00	192.94	2,199.1	2,499.87	-20.8	-4.8	-20.4	2.00	2.00	0.00
2,300.0	9.00	192.94	2,298.2	2,400.85	-34.4	-7.9	-33.7	2.00	2.00	0.00
2,400.0	11.00	192.94	2,396.6	2,302.37	-51.3	-11.8	-50.3	2.00	2.00	0.00
2,500.0	13.00	192.94	2,494.4	2,204.56	-71.6	-16.4	-70.2	2.00	2.00	0.00
EOB TO 13.07° INC										
2,503.6	13.07	192.94	2,497.9	2,201.06	-72.4	-16.6	-71.0	1.98	1.98	0.00
2,600.0	13.07	192.94	2,591.8	2,107.15	-93.6	-21.5	-91.8	0.00	0.00	0.00
2,700.0	13.07	192.94	2,689.3	2,009.74	-115.6	-26.6	-113.5	0.00	0.00	0.00
2,800.0	13.07	192.94	2,786.7	1,912.34	-137.7	-31.6	-135.1	0.00	0.00	0.00
2,900.0	13.07	192.94	2,884.1	1,814.93	-159.7	-36.7	-156.7	0.00	0.00	0.00
3,000.0	13.07	192.94	2,981.5	1,717.52	-181.8	-41.8	-178.3	0.00	0.00	0.00
3,100.0	13.07	192.94	3,078.9	1,620.11	-203.8	-46.8	-200.0	0.00	0.00	0.00
3,200.0	13.07	192.94	3,176.3	1,522.70	-225.8	-51.9	-221.6	0.00	0.00	0.00
3,300.0	13.07	192.94	3,273.7	1,425.29	-247.9	-57.0	-243.2	0.00	0.00	0.00
3,400.0	13.07	192.94	3,371.1	1,327.88	-269.9	-62.0	-264.8	0.00	0.00	0.00
3,500.0	13.07	192.94	3,468.5	1,230.47	-292.0	-67.1	-286.4	0.00	0.00	0.00
3,600.0	13.07	192.94	3,565.9	1,133.06	-314.0	-72.2	-308.1	0.00	0.00	0.00
3,700.0	13.07	192.94	3,663.3	1,035.66	-336.1	-77.2	-329.7	0.00	0.00	0.00
3,800.0	13.07	192.94	3,760.8	938.25	-358.1	-82.3	-351.3	0.00	0.00	0.00
3,900.0	13.07	192.94	3,858.2	840.84	-380.1	-87.4	-372.9	0.00	0.00	0.00
4,000.0	13.07	192.94	3,955.6	743.43	-402.2	-92.4	-394.6	0.00	0.00	0.00
4,100.0	13.07	192.94	4,053.0	646.02	-424.2	-97.5	-416.2	0.00	0.00	0.00
4,200.0	13.07	192.94	4,150.4	548.61	-446.3	-102.6	-437.8	0.00	0.00	0.00
4,300.0	13.07	192.94	4,247.8	451.20	-468.3	-107.6	-459.4	0.00	0.00	0.00
4,400.0	13.07	192.94	4,345.2	353.79	-490.4	-112.7	-481.1	0.00	0.00	0.00
4,500.0	13.07	192.94	4,442.6	256.38	-512.4	-117.8	-502.7	0.00	0.00	0.00
4,600.0	13.07	192.94	4,540.0	158.98	-534.4	-122.8	-524.3	0.00	0.00	0.00
4,700.0	13.07	192.94	4,637.4	61.57	-556.5	-127.9	-545.9	0.00	0.00	0.00
4,800.0	13.07	192.94	4,734.8	-35.84	-578.5	-133.0	-567.6	0.00	0.00	0.00
4,900.0	13.07	192.94	4,832.3	-133.25	-600.6	-138.0	-589.2	0.00	0.00	0.00

Database:	EDM 5000.1 Single User Db	Local Co-ordinate Reference:	Well STATE ANTELOPE 44-21-16XRLNB
Company:	BONANZA CREEK ENERGY INC.	TVD Reference:	KB-EST @ 4699.0usft (Original Well Elev)
Project:	WELD COUNTY, COLORADO (NAD 83)	MD Reference:	KB-EST @ 4699.0usft (Original Well Elev)
Site:	SE SE SEC. 21 T5N R62W 6th P.M.	North Reference:	True
Well:	STATE ANTELOPE 44-21-16XRLNB	Survey Calculation Method:	Minimum Curvature
Wellbore:	ORIGINAL WELLBORE		
Design:	PROPOSAL #3		

Planned Survey

MD (usft)	Inc (°)	Azi (°)	TVD (usft)	SS (usft)	+N/-S (usft)	+E/-W (usft)	Vertical Section (usft)	Dogleg Rate (°/100usft)	Build Rate (°/100usft)	Turn Rate (°/100usft)
END OF TANGENT										
4,983.9	13.07	192.94	4,914.0	-214.98	-619.1	-142.3	-607.3	0.00	0.00	0.00
5,000.0	12.75	192.94	4,929.7	-230.67	-622.6	-143.1	-610.8	2.00	-2.00	0.00
5,100.0	10.75	192.94	5,027.6	-328.57	-642.4	-147.6	-630.2	2.00	-2.00	0.00
5,200.0	8.75	192.94	5,126.1	-427.12	-658.9	-151.4	-646.4	2.00	-2.00	0.00
5,300.0	6.75	192.94	5,225.2	-526.20	-672.0	-154.5	-659.3	2.00	-2.00	0.00
5,400.0	4.75	192.94	5,324.7	-625.69	-681.8	-156.7	-668.9	2.00	-2.00	0.00
5,500.0	2.75	192.94	5,424.5	-725.48	-688.2	-158.2	-675.2	2.00	-2.00	0.00
5,600.0	0.75	192.94	5,524.4	-825.42	-691.2	-158.8	-678.1	2.00	-2.00	0.00
EOD TO VERTICAL										
5,637.5	0.00	0.00	5,561.9	-862.92	-691.4	-158.9	-678.3	2.00	-2.00	0.00
KOP (8°/100ft BUR)										
5,667.5	0.00	0.00	5,591.9	-892.92	-691.4	-158.9	-678.3	0.00	0.00	0.00
5,700.0	2.60	357.05	5,624.4	-925.41	-690.7	-158.9	-677.6	8.01	8.01	0.00
5,800.0	10.60	357.05	5,723.7	-1,024.67	-679.2	-159.5	-666.1	8.00	8.00	0.00
5,900.0	18.60	357.05	5,820.4	-1,121.36	-654.0	-160.8	-640.9	8.00	8.00	0.00
6,000.0	26.60	357.05	5,912.6	-1,213.60	-615.7	-162.8	-602.5	8.00	8.00	0.00
6,100.0	34.60	357.05	5,998.6	-1,299.61	-564.9	-165.4	-551.7	8.00	8.00	0.00
6,200.0	42.60	357.05	6,076.7	-1,377.69	-502.6	-168.6	-489.3	8.00	8.00	0.00
6,300.0	50.60	357.05	6,145.3	-1,446.34	-430.1	-172.4	-416.7	8.00	8.00	0.00
6,400.0	58.60	357.05	6,203.2	-1,504.22	-348.8	-176.6	-335.3	8.00	8.00	0.00
6,500.0	66.60	357.05	6,249.2	-1,550.20	-260.2	-181.1	-246.6	8.00	8.00	0.00
6,600.0	74.60	357.05	6,282.4	-1,583.39	-166.1	-186.0	-152.4	8.00	8.00	0.00
START OF TANGENT										
6,605.0	75.00	357.05	6,283.7	-1,584.70	-161.2	-186.2	-147.6	7.96	7.96	0.00
6,700.0	75.00	357.05	6,308.3	-1,609.29	-69.6	-190.9	-55.8	0.00	0.00	0.00
END OF TANGENT										
6,705.0	75.00	357.05	6,309.6	-1,610.58	-64.8	-191.2	-51.0	0.00	0.00	0.00
6,800.0	82.60	357.05	6,328.0	-1,629.02	28.2	-196.0	42.1	8.00	8.00	0.00
7" ICP - ANTELOPE 44-21-16XRLNB (P3)										
6,892.5	90.00	357.05	6,334.0	-1,634.98	120.3	-200.7	134.3	8.00	8.00	0.00
6,900.0	90.00	357.05	6,334.0	-1,634.98	127.8	-201.1	141.8	0.00	0.00	0.00
7,000.0	90.00	357.05	6,334.0	-1,634.98	227.7	-206.3	241.8	0.00	0.00	0.00
7,100.0	90.00	357.05	6,334.0	-1,634.98	327.6	-211.4	341.8	0.00	0.00	0.00
7,200.0	90.00	357.05	6,334.0	-1,634.98	427.4	-216.6	441.8	0.00	0.00	0.00
7,300.0	90.00	357.05	6,334.0	-1,634.98	527.3	-221.7	541.8	0.00	0.00	0.00
7,400.0	90.00	357.05	6,334.0	-1,634.98	627.2	-226.8	641.7	0.00	0.00	0.00
7,500.0	90.00	357.05	6,334.0	-1,634.98	727.0	-232.0	741.7	0.00	0.00	0.00
7,600.0	90.00	357.05	6,334.0	-1,634.98	826.9	-237.1	841.7	0.00	0.00	0.00
7,700.0	90.00	357.05	6,334.0	-1,634.98	926.8	-242.3	941.7	0.00	0.00	0.00
7,800.0	90.00	357.05	6,334.0	-1,634.98	1,026.6	-247.4	1,041.7	0.00	0.00	0.00
7,900.0	90.00	357.05	6,334.0	-1,634.98	1,126.5	-252.6	1,141.6	0.00	0.00	0.00
8,000.0	90.00	357.05	6,334.0	-1,634.98	1,226.4	-257.7	1,241.6	0.00	0.00	0.00
8,100.0	90.00	357.05	6,334.0	-1,634.98	1,326.2	-262.9	1,341.6	0.00	0.00	0.00
8,200.0	90.00	357.05	6,334.0	-1,634.98	1,426.1	-268.0	1,441.6	0.00	0.00	0.00
8,300.0	90.00	357.05	6,334.0	-1,634.98	1,526.0	-273.2	1,541.6	0.00	0.00	0.00
8,400.0	90.00	357.05	6,334.0	-1,634.98	1,625.8	-278.3	1,641.5	0.00	0.00	0.00
8,500.0	90.00	357.05	6,334.0	-1,634.98	1,725.7	-283.5	1,741.5	0.00	0.00	0.00
8,600.0	90.00	357.05	6,334.0	-1,634.98	1,825.6	-288.6	1,841.5	0.00	0.00	0.00
8,700.0	90.00	357.05	6,334.0	-1,634.98	1,925.4	-293.7	1,941.5	0.00	0.00	0.00
8,800.0	90.00	357.05	6,334.0	-1,634.98	2,025.3	-298.9	2,041.5	0.00	0.00	0.00
8,900.0	90.00	357.05	6,334.0	-1,634.98	2,125.2	-304.0	2,141.4	0.00	0.00	0.00
9,000.0	90.00	357.05	6,334.0	-1,634.98	2,225.0	-309.2	2,241.4	0.00	0.00	0.00

Database:	EDM 5000.1 Single User Db	Local Co-ordinate Reference:	Well STATE ANTELOPE 44-21-16XRLNB
Company:	BONANZA CREEK ENERGY INC.	TVD Reference:	KB-EST @ 4699.0usft (Original Well Elev)
Project:	WELD COUNTY, COLORADO (NAD 83)	MD Reference:	KB-EST @ 4699.0usft (Original Well Elev)
Site:	SE SE SEC. 21 T5N R62W 6th P.M.	North Reference:	True
Well:	STATE ANTELOPE 44-21-16XRLNB	Survey Calculation Method:	Minimum Curvature
Wellbore:	ORIGINAL WELLBORE		
Design:	PROPOSAL #3		

Planned Survey										
MD (usft)	Inc (°)	Azi (°)	TVD (usft)	SS (usft)	+N/-S (usft)	+E/-W (usft)	Vertical Section (usft)	Dogleg Rate (°/100usft)	Build Rate (°/100usft)	Turn Rate (°/100usft)
9,100.0	90.00	357.05	6,334.0	-1,634.98	2,324.9	-314.3	2,341.4	0.00	0.00	0.00
9,200.0	90.00	357.05	6,334.0	-1,634.98	2,424.8	-319.5	2,441.4	0.00	0.00	0.00
9,300.0	90.00	357.05	6,334.0	-1,634.98	2,524.6	-324.6	2,541.4	0.00	0.00	0.00
9,400.0	90.00	357.05	6,334.0	-1,634.98	2,624.5	-329.8	2,641.3	0.00	0.00	0.00
9,500.0	90.00	357.05	6,334.0	-1,634.98	2,724.4	-334.9	2,741.3	0.00	0.00	0.00
9,600.0	90.00	357.05	6,334.0	-1,634.98	2,824.2	-340.0	2,841.3	0.00	0.00	0.00
9,700.0	90.00	357.05	6,334.0	-1,634.98	2,924.1	-345.2	2,941.3	0.00	0.00	0.00
9,800.0	90.00	357.05	6,334.0	-1,634.98	3,024.0	-350.3	3,041.3	0.00	0.00	0.00
9,900.0	90.00	357.05	6,334.0	-1,634.98	3,123.9	-355.5	3,141.2	0.00	0.00	0.00
10,000.0	90.00	357.05	6,334.0	-1,634.98	3,223.7	-360.6	3,241.2	0.00	0.00	0.00
10,100.0	90.00	357.05	6,334.0	-1,634.98	3,323.6	-365.8	3,341.2	0.00	0.00	0.00
10,200.0	90.00	357.05	6,334.0	-1,634.98	3,423.5	-370.9	3,441.2	0.00	0.00	0.00
10,300.0	90.00	357.05	6,334.0	-1,634.98	3,523.3	-376.1	3,541.2	0.00	0.00	0.00
10,400.0	90.00	357.05	6,334.0	-1,634.98	3,623.2	-381.2	3,641.1	0.00	0.00	0.00
10,500.0	90.00	357.05	6,334.0	-1,634.98	3,723.1	-386.3	3,741.1	0.00	0.00	0.00
10,600.0	90.00	357.05	6,334.0	-1,634.98	3,822.9	-391.5	3,841.1	0.00	0.00	0.00
10,700.0	90.00	357.05	6,334.0	-1,634.98	3,922.8	-396.6	3,941.1	0.00	0.00	0.00
10,800.0	90.00	357.05	6,334.0	-1,634.98	4,022.7	-401.8	4,041.1	0.00	0.00	0.00
10,900.0	90.00	357.05	6,334.0	-1,634.98	4,122.5	-406.9	4,141.0	0.00	0.00	0.00
11,000.0	90.00	357.05	6,334.0	-1,634.98	4,222.4	-412.1	4,241.0	0.00	0.00	0.00
11,100.0	90.00	357.05	6,334.0	-1,634.98	4,322.3	-417.2	4,341.0	0.00	0.00	0.00
11,200.0	90.00	357.05	6,334.0	-1,634.98	4,422.1	-422.4	4,441.0	0.00	0.00	0.00
11,300.0	90.00	357.05	6,334.0	-1,634.98	4,522.0	-427.5	4,541.0	0.00	0.00	0.00
11,400.0	90.00	357.05	6,334.0	-1,634.98	4,621.9	-432.6	4,640.9	0.00	0.00	0.00
11,500.0	90.00	357.05	6,334.0	-1,634.98	4,721.7	-437.8	4,740.9	0.00	0.00	0.00
11,600.0	90.00	357.05	6,334.0	-1,634.98	4,821.6	-442.9	4,840.9	0.00	0.00	0.00
11,700.0	90.00	357.05	6,334.0	-1,634.98	4,921.5	-448.1	4,940.9	0.00	0.00	0.00
11,800.0	90.00	357.05	6,334.0	-1,634.98	5,021.3	-453.2	5,040.9	0.00	0.00	0.00
11,900.0	90.00	357.05	6,334.0	-1,634.98	5,121.2	-458.4	5,140.8	0.00	0.00	0.00
12,000.0	90.00	357.05	6,334.0	-1,634.99	5,221.1	-463.5	5,240.8	0.00	0.00	0.00
12,100.0	90.00	357.05	6,334.0	-1,634.99	5,320.9	-468.6	5,340.8	0.00	0.00	0.00
12,200.0	90.00	357.05	6,334.0	-1,634.99	5,420.8	-473.8	5,440.8	0.00	0.00	0.00
12,300.0	90.00	357.05	6,334.0	-1,634.99	5,520.7	-478.9	5,540.8	0.00	0.00	0.00
12,400.0	90.00	357.05	6,334.0	-1,634.99	5,620.5	-484.1	5,640.8	0.00	0.00	0.00
12,500.0	90.00	357.05	6,334.0	-1,634.99	5,720.4	-489.2	5,740.7	0.00	0.00	0.00
12,600.0	90.00	357.05	6,334.0	-1,634.99	5,820.3	-494.4	5,840.7	0.00	0.00	0.00
12,700.0	90.00	357.05	6,334.0	-1,634.99	5,920.1	-499.5	5,940.7	0.00	0.00	0.00
12,800.0	90.00	357.05	6,334.0	-1,634.99	6,020.0	-504.6	6,040.7	0.00	0.00	0.00
12,900.0	90.00	357.05	6,334.0	-1,634.99	6,119.9	-509.8	6,140.7	0.00	0.00	0.00
13,000.0	90.00	357.05	6,334.0	-1,634.99	6,219.7	-514.9	6,240.6	0.00	0.00	0.00
13,100.0	90.00	357.05	6,334.0	-1,634.99	6,319.6	-520.1	6,340.6	0.00	0.00	0.00
13,200.0	90.00	357.05	6,334.0	-1,634.99	6,419.5	-525.2	6,440.6	0.00	0.00	0.00
13,300.0	90.00	357.05	6,334.0	-1,634.99	6,519.4	-530.4	6,540.6	0.00	0.00	0.00
13,400.0	90.00	357.05	6,334.0	-1,634.99	6,619.2	-535.5	6,640.6	0.00	0.00	0.00
13,500.0	90.00	357.05	6,334.0	-1,634.99	6,719.1	-540.6	6,740.5	0.00	0.00	0.00
13,600.0	90.00	357.05	6,334.0	-1,634.99	6,819.0	-545.8	6,840.5	0.00	0.00	0.00
13,700.0	90.00	357.05	6,334.0	-1,634.99	6,918.8	-550.9	6,940.5	0.00	0.00	0.00
13,800.0	90.00	357.05	6,334.0	-1,634.99	7,018.7	-556.1	7,040.5	0.00	0.00	0.00
13,900.0	90.00	357.05	6,334.0	-1,634.99	7,118.6	-561.2	7,140.5	0.00	0.00	0.00
14,000.0	90.00	357.05	6,334.0	-1,634.99	7,218.4	-566.4	7,240.4	0.00	0.00	0.00
14,100.0	90.00	357.05	6,334.0	-1,634.99	7,318.3	-571.5	7,340.4	0.00	0.00	0.00
14,200.0	90.00	357.05	6,334.0	-1,634.99	7,418.2	-576.6	7,440.4	0.00	0.00	0.00
14,300.0	90.00	357.05	6,334.0	-1,634.99	7,518.0	-581.8	7,540.4	0.00	0.00	0.00
14,400.0	90.00	357.05	6,334.0	-1,634.99	7,617.9	-586.9	7,640.4	0.00	0.00	0.00

Database:	EDM 5000.1 Single User Db	Local Co-ordinate Reference:	Well STATE ANTELOPE 44-21-16XRLNB
Company:	BONANZA CREEK ENERGY INC.	TVD Reference:	KB-EST @ 4699.0usft (Original Well Elev)
Project:	WELD COUNTY, COLORADO (NAD 83)	MD Reference:	KB-EST @ 4699.0usft (Original Well Elev)
Site:	SE SE SEC. 21 T5N R62W 6th P.M.	North Reference:	True
Well:	STATE ANTELOPE 44-21-16XRLNB	Survey Calculation Method:	Minimum Curvature
Wellbore:	ORIGINAL WELLBORE		
Design:	PROPOSAL #3		

Planned Survey

MD (usft)	Inc (°)	Azi (°)	TVD (usft)	SS (usft)	+N/-S (usft)	+E/-W (usft)	Vertical Section (usft)	Dogleg Rate (°/100usft)	Build Rate (°/100usft)	Turn Rate (°/100usft)
14,500.0	90.00	357.05	6,334.0	-1,634.99	7,717.8	-592.1	7,740.3	0.00	0.00	0.00
14,600.0	90.00	357.05	6,334.0	-1,634.99	7,817.6	-597.2	7,840.3	0.00	0.00	0.00
14,700.0	90.00	357.05	6,334.0	-1,634.99	7,917.5	-602.3	7,940.3	0.00	0.00	0.00
14,800.0	90.00	357.05	6,334.0	-1,634.99	8,017.4	-607.5	8,040.3	0.00	0.00	0.00
14,900.0	90.00	357.05	6,334.0	-1,634.99	8,117.2	-612.6	8,140.3	0.00	0.00	0.00
15,000.0	90.00	357.05	6,334.0	-1,634.99	8,217.1	-617.8	8,240.2	0.00	0.00	0.00
15,100.0	90.00	357.05	6,334.0	-1,634.99	8,317.0	-622.9	8,340.2	0.00	0.00	0.00
15,200.0	90.00	357.05	6,334.0	-1,634.99	8,416.8	-628.0	8,440.2	0.00	0.00	0.00
15,300.0	90.00	357.05	6,334.0	-1,635.00	8,516.7	-633.2	8,540.2	0.00	0.00	0.00
15,400.0	90.00	357.05	6,334.0	-1,635.00	8,616.6	-638.3	8,640.2	0.00	0.00	0.00
15,500.0	90.00	357.05	6,334.0	-1,635.00	8,716.4	-643.5	8,740.1	0.00	0.00	0.00
15,600.0	90.00	357.05	6,334.0	-1,635.00	8,816.3	-648.6	8,840.1	0.00	0.00	0.00
15,700.0	90.00	357.05	6,334.0	-1,635.00	8,916.2	-653.8	8,940.1	0.00	0.00	0.00
15,800.0	90.00	357.05	6,334.0	-1,635.00	9,016.0	-658.9	9,040.1	0.00	0.00	0.00
15,900.0	90.00	357.05	6,334.0	-1,635.00	9,115.9	-664.0	9,140.1	0.00	0.00	0.00
16,000.0	90.00	357.05	6,334.0	-1,635.00	9,215.8	-669.2	9,240.0	0.00	0.00	0.00
16,100.0	90.00	357.05	6,334.0	-1,635.00	9,315.6	-674.3	9,340.0	0.00	0.00	0.00
16,200.0	90.00	357.05	6,334.0	-1,635.00	9,415.5	-679.5	9,440.0	0.00	0.00	0.00
16,300.0	90.00	357.05	6,334.0	-1,635.00	9,515.4	-684.6	9,540.0	0.00	0.00	0.00
16,400.0	90.00	357.05	6,334.0	-1,635.00	9,615.3	-689.7	9,640.0	0.00	0.00	0.00
16,500.0	90.00	357.05	6,334.0	-1,635.00	9,715.1	-694.9	9,739.9	0.00	0.00	0.00
BHL - ANTELOPE 44-21-16XRLNB (P3)										
16,526.6	90.00	357.05	6,334.0	-1,635.00	9,741.7	-696.2	9,766.5	0.00	0.00	0.00

Plan Annotations

MD (usft)	TVD (usft)	Local Coordinates		Comment
		+N/-S (usft)	+E/-W (usft)	
1,850.0	1,850.0	0.0	0.0	START NUDGE (2°/100ft BUR)
2,503.6	2,497.9	-72.4	-16.6	EOB TO 13.07° INC
4,983.9	4,914.0	-619.1	-142.3	END OF TANGENT
5,637.5	5,561.9	-691.4	-158.9	EOD TO VERTICAL
5,667.5	5,591.9	-691.4	-158.9	KOP (8°/100ft BUR)
6,605.0	6,283.7	-161.2	-186.2	START OF TANGENT
6,705.0	6,309.6	-64.8	-191.2	END OF TANGENT
6,892.5	6,334.0	120.3	-200.7	7" ICP - ANTELOPE 44-21-16XRLNB (P3)
16,526.6	6,334.0	9,741.7	-696.2	BHL - ANTELOPE 44-21-16XRLNB (P3)