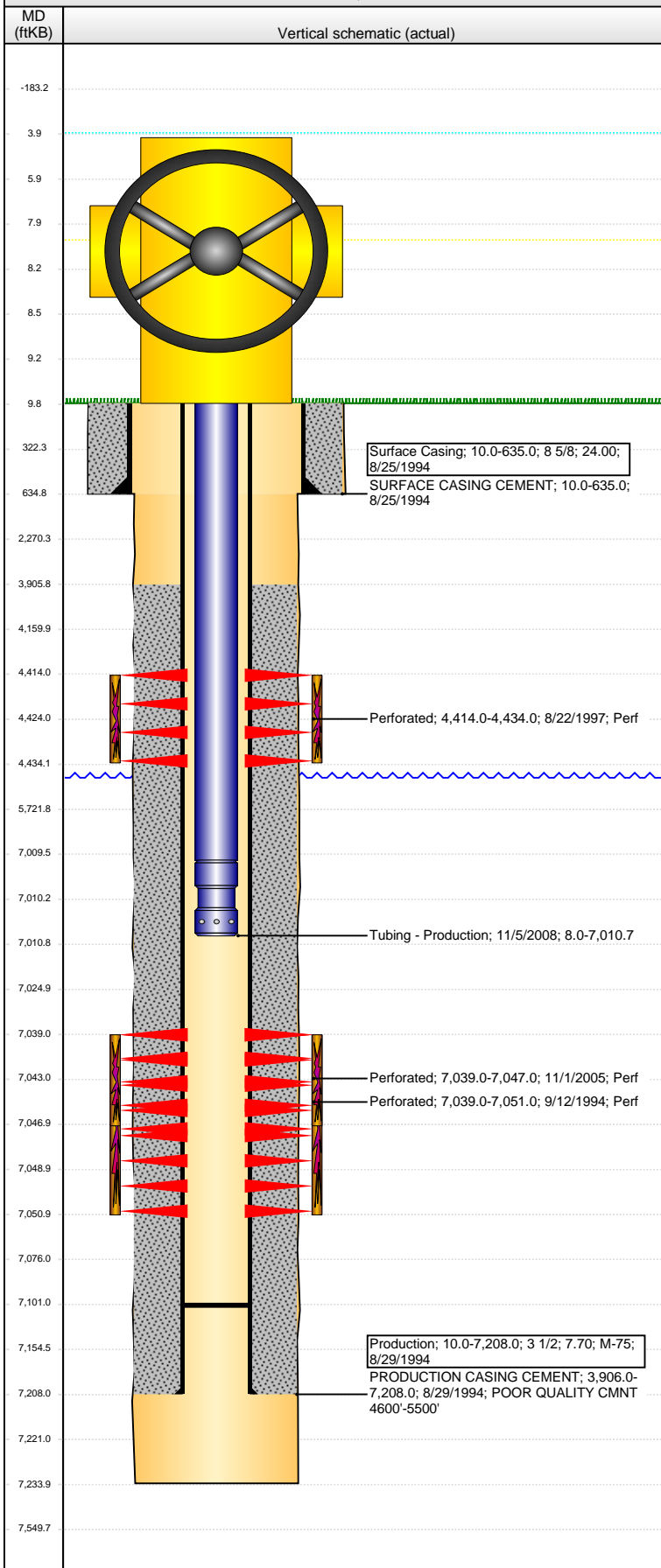


**Well Name: HETTINGER D30-06**

VERTICAL - ORIGINAL HOLE, 3/24/2016 11:05:20 AM



Well Header									
API 05-123-18465		Business Unit DJ BASIN		District 15		Well Config VERTICAL			
Original KB Elevation (ft) 4,798		KB - GL / MSL (ftKB) 10.00		Spud Date 8/26/1994		P & A Date			
Comment									
Directions To Well WCR 30 & WCR 49, SOUTH 0.4 MILES, EAST 0.3 MILES, NORTH 0.1 INTO									
Congressional Location									
Quarter 1	Quarter 2	Quarter 3 SE	Quarter 4 NW	Section 30	Township 3	Twnshp N... N	Range 64	Rng E/W Dir W	
Bottom Hole Location									
North-South Distance (ft)		From N or S Line		East-West Distance (ft)			From E or W Line		
Plug Back Total Depths									
Date	Depth (ftKB)	Method			Com				
11/5/2008	7,101.0	TUBING TALLY			DID NOT TAG AT THIS POINT. 50' PLUS.OF RAT...				
Wellbore Sections									
Section Des		Size (in)		Act Top, MD (ftKB)		Act Btm, MD (ftKB)			
SURFACE		12 1/4		10.0		635.0			
PRODUCTION		7 7/8		635.0		7,234.0			
Zone Statuses									
Zone Name	Status Date	Status	Fluid Type	Job	Prod Method				
SUSSEX	9/12/1997	PR		RECOMPLETI...					
SUSSEX	10/29/2005	PR		RE-FRAC, 2/25...					
CODELL	9/24/1994	PR		DRILLING - OR...					
CODELL	9/12/1997	PR		RECOMPLETI...					
CODELL	11/21/2005	PR		RE-FRAC, 2/25...					
Casing Strings									
Surface Casing, 635.0ftKB									
Casing Description		Run Date	OD (in)	Wt/Len (l...	Grade	Top, MD (ft...	MD (ftKB)		
Surface Casing		8/25/1994	8 5/8	24.00		10.0	635.0		
Production, 7,208.0ftKB									
Casing Description		Run Date	OD (in)	Wt/Len (l...	Grade	Top, MD (ft...	MD (ftKB)		
Production		8/29/1994	3 1/2	7.70	M-75	10.0	7,208.0		
Cement									
Description					Top Depth (ftKB)		Bottom Depth (ftKB)		
PRODUCTION CASING CEMENT					3,906.0		7,208.0		
Description					Top Depth (ftKB)		Bottom Depth (ftKB)		
SURFACE CASING CEMENT					10.0		635.0		
Tubing Strings									
Tubing Description		Run Date	String...	ID (in)	Wt (lb/ft)	Grade	Len (ft)	Set De...	
Tubing - Production		11/14/2005	2 1/16	1.751	3.25	N-80	7,023.00		
Tubing Description		Run Date	String...	ID (in)	Wt (lb/ft)	Grade	Len (ft)	Set De...	
Tubing - Production		11/5/2008	2 1/16	1.751	3.25	J-55	7,002.71		
Tubing Components									
Item Des		OD (in)	Wt (lb/ft)	Grade	Jts	Len (ft)	Btm (ftKB)	Btm (TVD) (ftKB)	
Cross Over		2	3.25	J-55	1	0.55	8.6		
Tubing		2 1/16	3.25	J-55	213	7,001.06	7,009.6		
Pump Seating Nipple		2 1/16	3.25	J-55	1	1.10	7,010.7		
Perforation Data									
Zone		Bnch/St g	Entered Shot Total	Top (ftKB)		Btm (ftKB)		Date	
SUSSEX, ORIGINAL HOLE			40	4,414.00		4,434.00		8/22/1997	
CODELL, ORIGINAL HOLE			48	7,039.00		7,051.00		9/12/1994	
CODELL, ORIGINAL HOLE			32	7,039.00		7,047.00		11/1/2005	
Stimulations & Treatments									
Date	Zone			Primary Job Type					
9/14/1994	CODELL, ORIGINAL HOLE			DRILLING - ORIGINAL					
Technical Result			Tech Result Details			Tech Result Note			
Comment									

**Well Name: HETTINGER D30-06**

VERTICAL - ORIGINAL HOLE, 3/24/2016 11:05:22 AM

## Stimulations & Treatments

Date 8/25/1997	Zone SUSSEX, ORIGINAL HOLE	Primary Job Type RECOMPLETION
Technical Result	Tech Result Details	Tech Result Note
Comment		

Date 11/9/2005	Zone CODELL, ORIGINAL HOLE	Primary Job Type RE-FRAC
Technical Result	Tech Result Details	Tech Result Note
Comment		

## Other In Hole

Run Date	Des	OD (in)	Top (ftKB)	Btm (ftKB)

## Logs

Date	Type	Top, MD (ftKB)	Btm, MD (ftKB)
1/9/1994	CEMENT BOND	3,700.0	7,177.0
8/29/1994	COMPENSATED DENSITY	3,900.0	7,240.0
8/29/1994	INDUCTION	3,900.0	7,240.0
1/27/2014	GYRO	10.0	6,950.0

