

Measured Depth Log

5"=100ft  
Feet

Oil Co: <b>Bonanza Creek</b>				Oil Company: <b>Bonanza Creek</b>			
Well Name: <b>State Pronghorn 44-14-29HNB</b>				Well Name: <b>State Pronghorn 44-14-29HNB</b>			
LSD:				LSD:			
State/Prov: <b>Colorado</b>				State/Prov: <b>Colorado</b>			
Country: <b>U.S.A.</b>				Country: <b>U.S.A.</b>			
Job #: <b>2015-006-25</b>				Job #: <b>2015-006-25</b>			
				Drilling Co: <b>Cade</b>			
				Rig #: <b>25</b>			
				Co Rep 1: <b>Bob</b>			
				Co Rep 2: <b>Craig</b>			
				Geologist 1:			
				Geologist 2:			
				DD 1: <b>Jason Banks</b>			
				DD 2: <b>Mark</b>			
				MWD 1: <b>David Keele</b>			
				MWD 2: <b>Tim Sinning</b>			
				MWD Kit:			
Well Lic:				GDat: <b>1983</b>			
API/UWI:							
AFE #:							
<b>Casing Depths</b>		<b>MD</b>		<b>Depth</b>		<b>Date</b>	
Surface:		Start: <b>5000.00</b>				<b>2/5/15</b>	
Intermediate:		End: <b>10517.06</b>					
Run #	Hole Size (in)	Gamma Offset	Survey Offset	Depth Start	Depth End	Date Start	Date End
01	8.75	47.35	52.00	0.00	6426.00	Feb 05, 15	Feb 08, 15
02	6 1/8	57.00	67.00	6426.00	10574.10	Feb 08, 15	Feb 10, 15

Printed: Feb 10, 2015 07:02

Comments:

Client: **Bonanza Creek**

Well Name: **State Pronghorn 44-14-29HNB**

API/UWI:

Well Lic:

Surface LSD:

State/Prov: **Colorado**

Country: **U.S.A.**

GDAT: **1983**

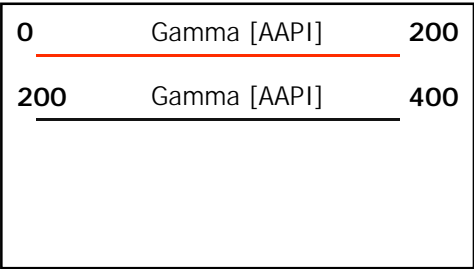
KB: **4618**

GL: **4601**

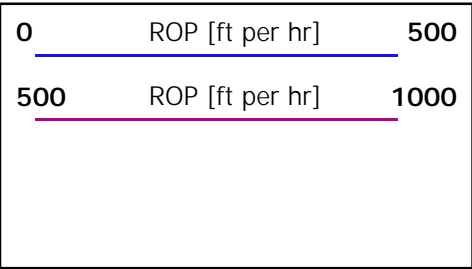
DF: **17.00**

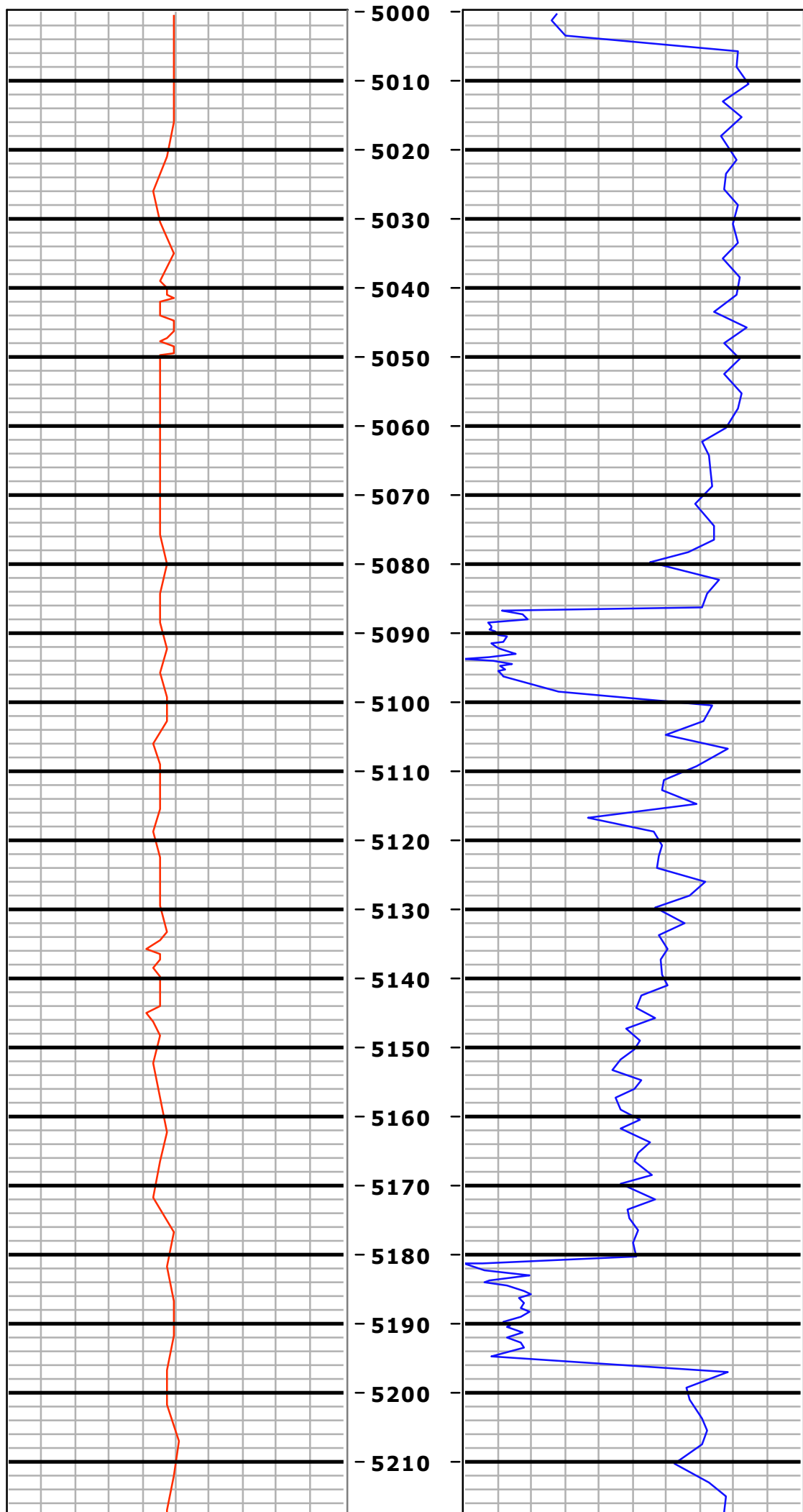
Job #: **2015-006-25**

MWD Kit:



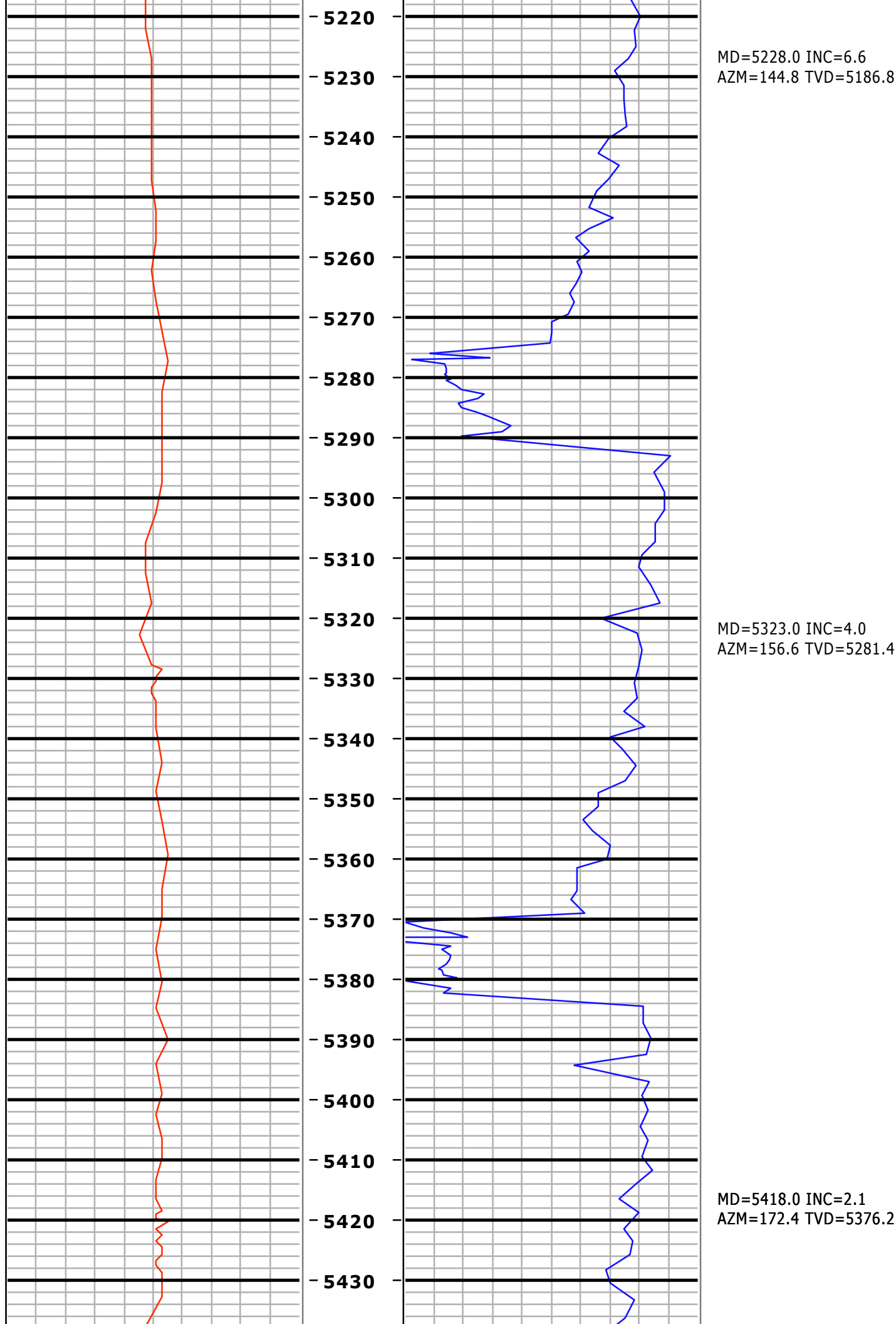
MD  
5":100'  
Feet

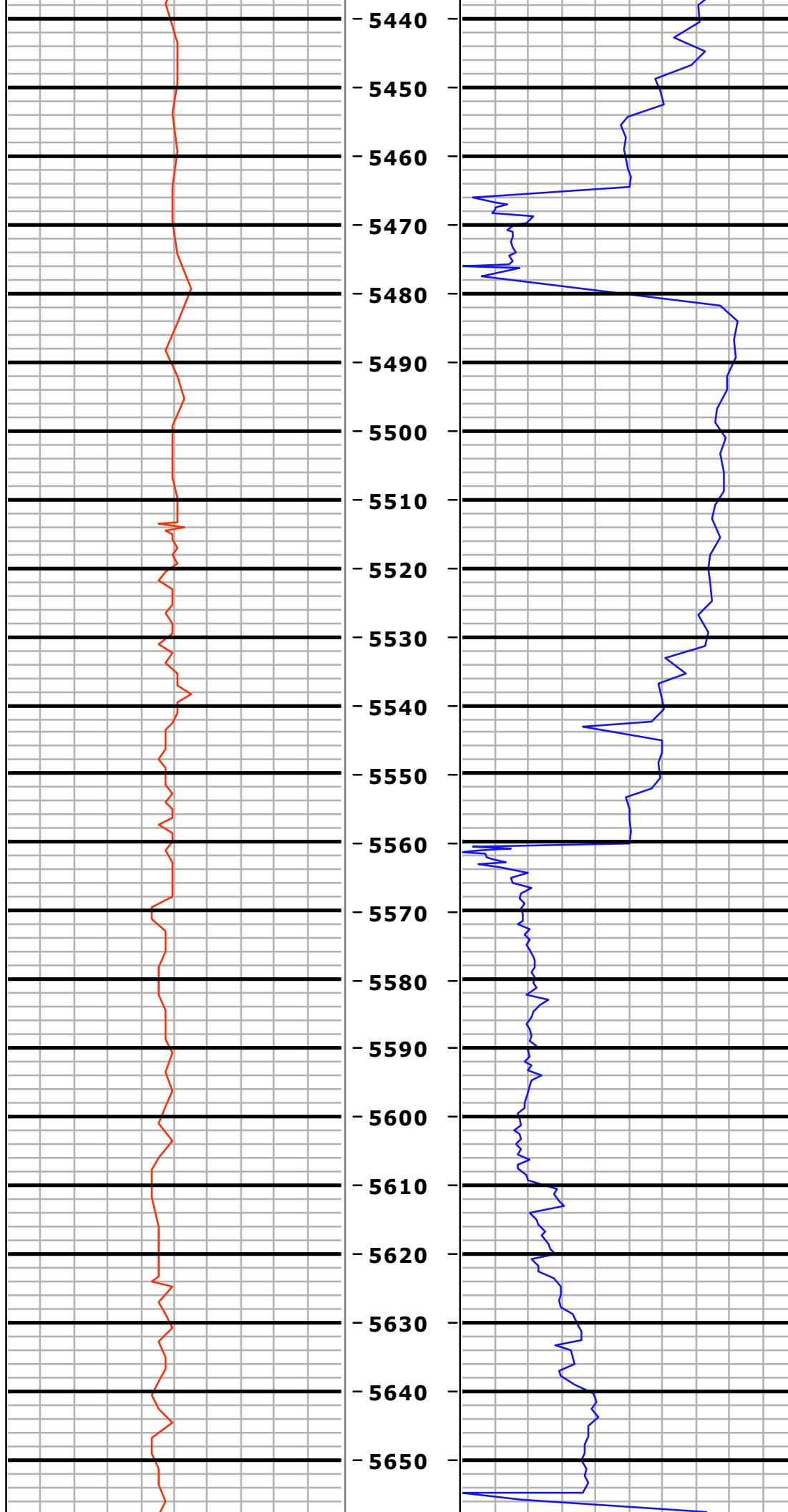




MD=5038.0 INC=7.9  
AZM=154.2 TVD=4998.7

MD=5134.0 INC=9.1  
AZM=145.1 TVD=5093.7

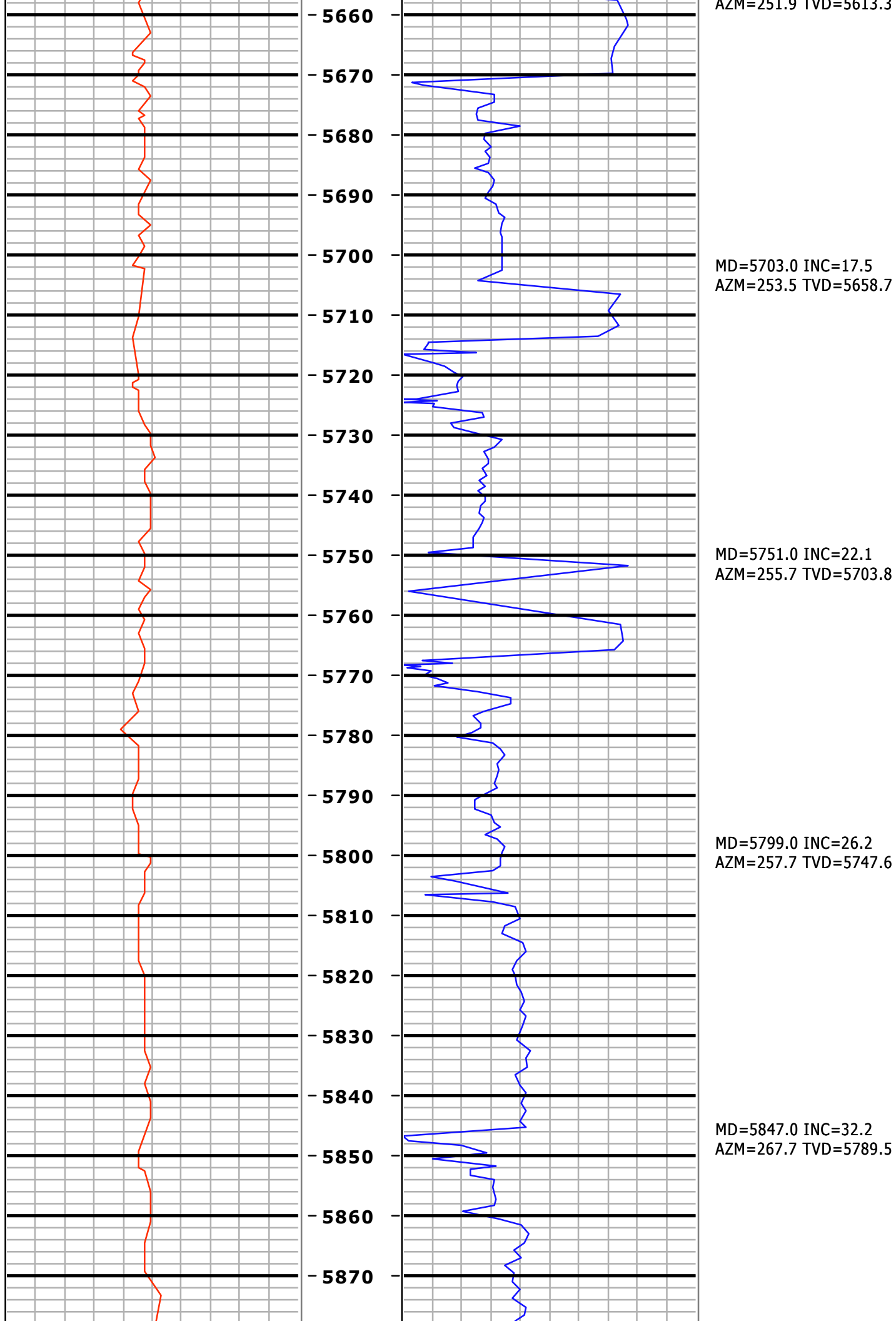


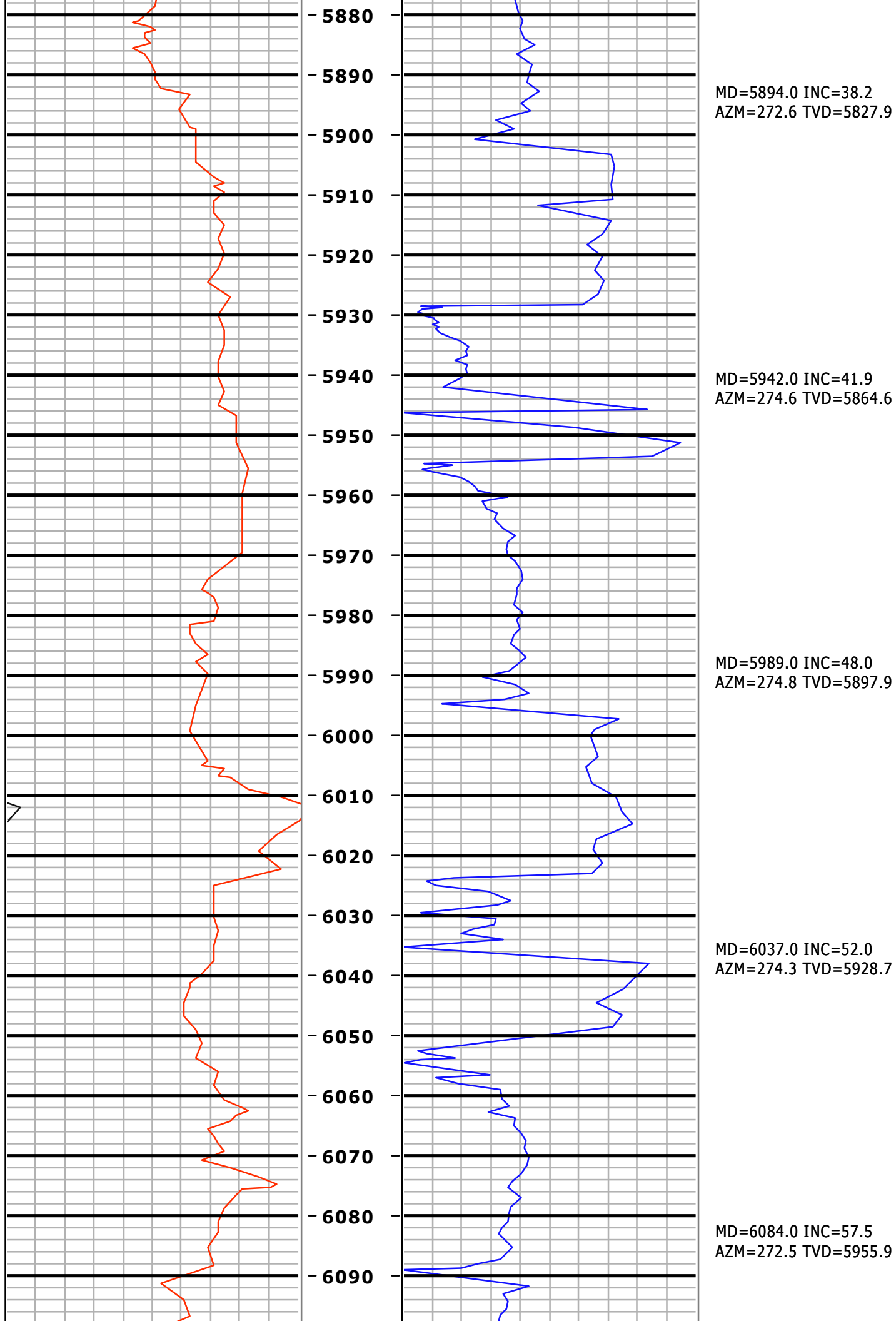


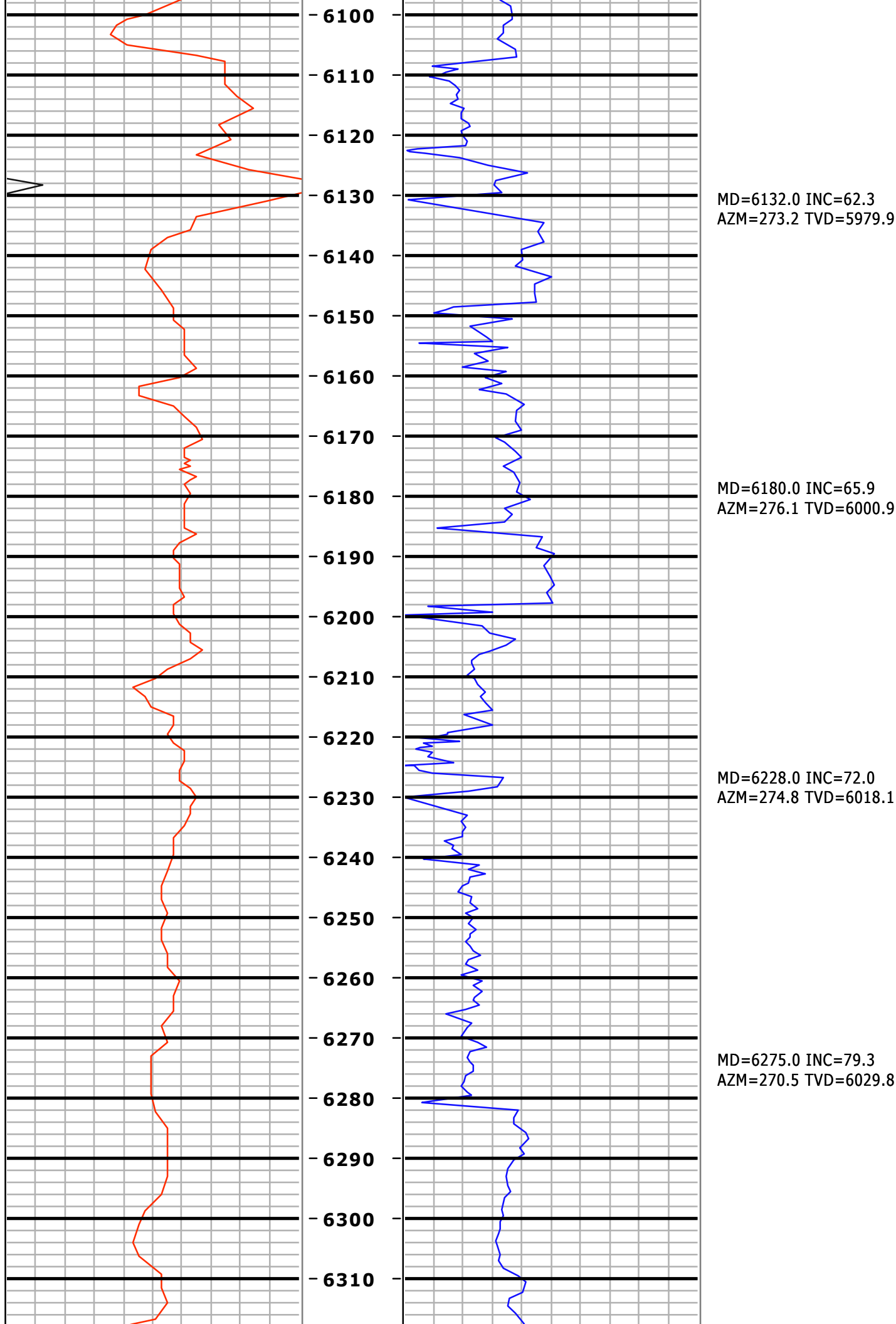
MD=5513.0 INC=0.8  
AZM=342.3 TVD=5471.2

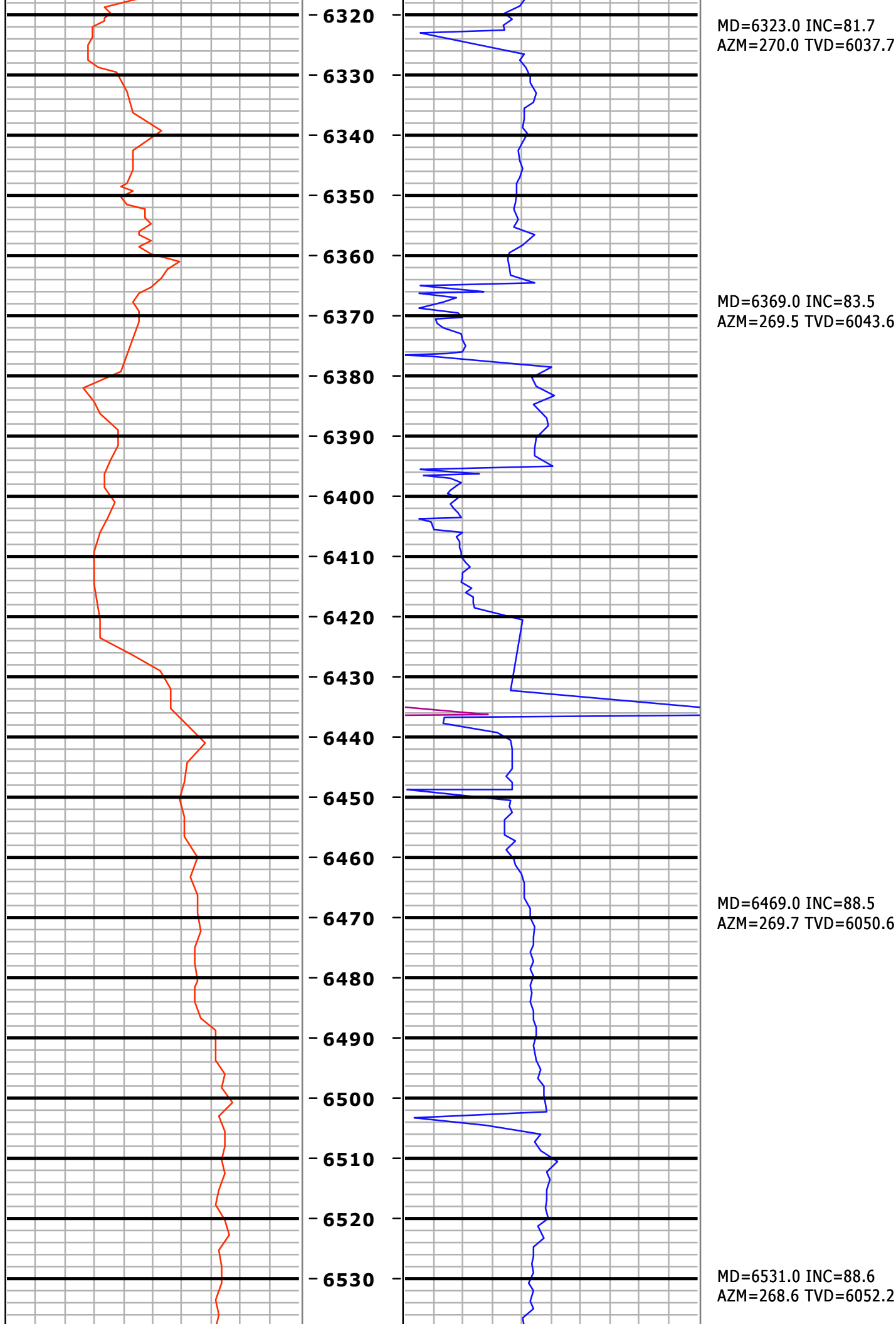
MD=5608.0 INC=6.4  
AZM=252.3 TVD=5566.0

MD=5656.0 INC=12.9  
AZM=251.2 TVD=5612.2

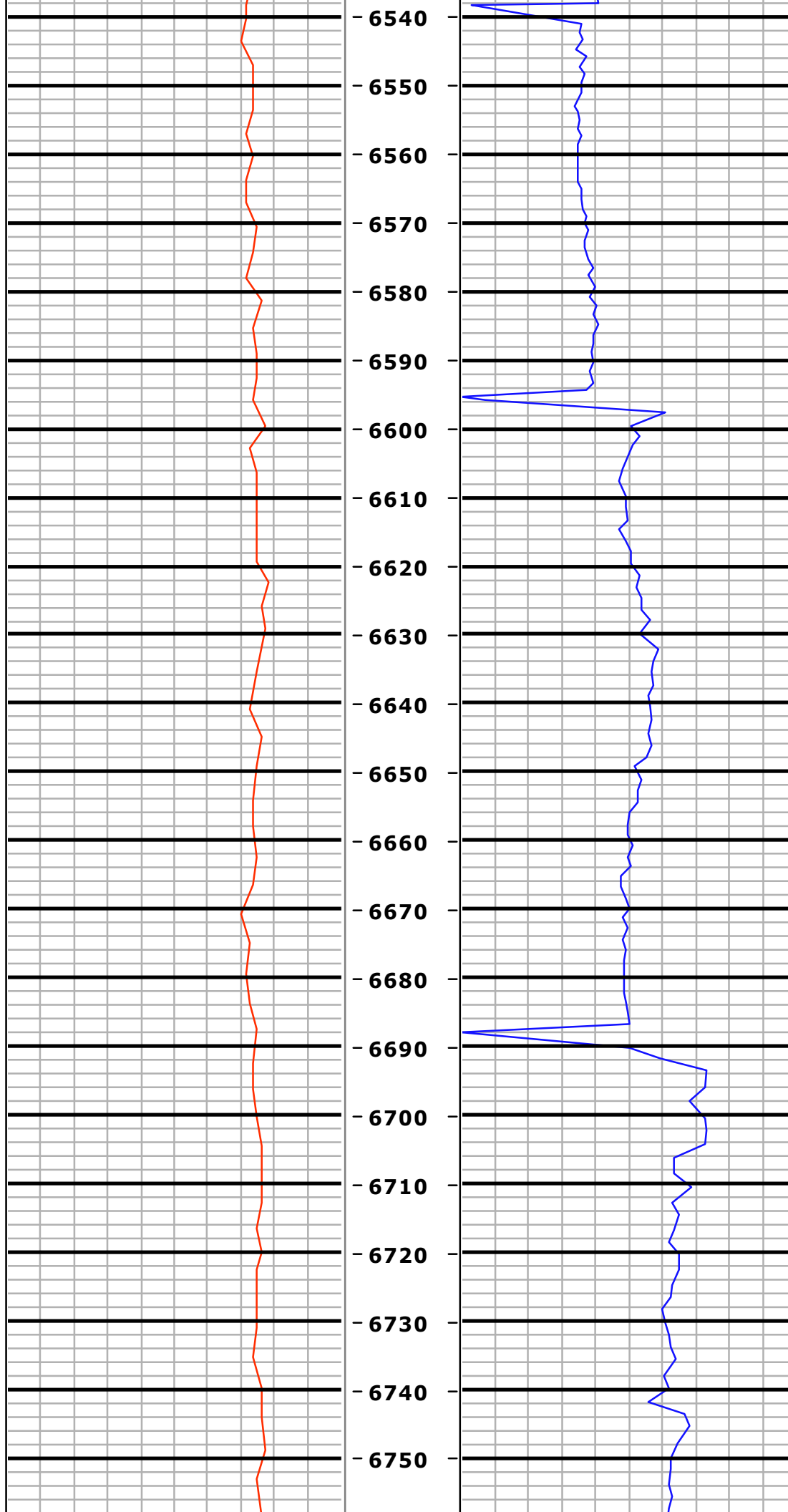






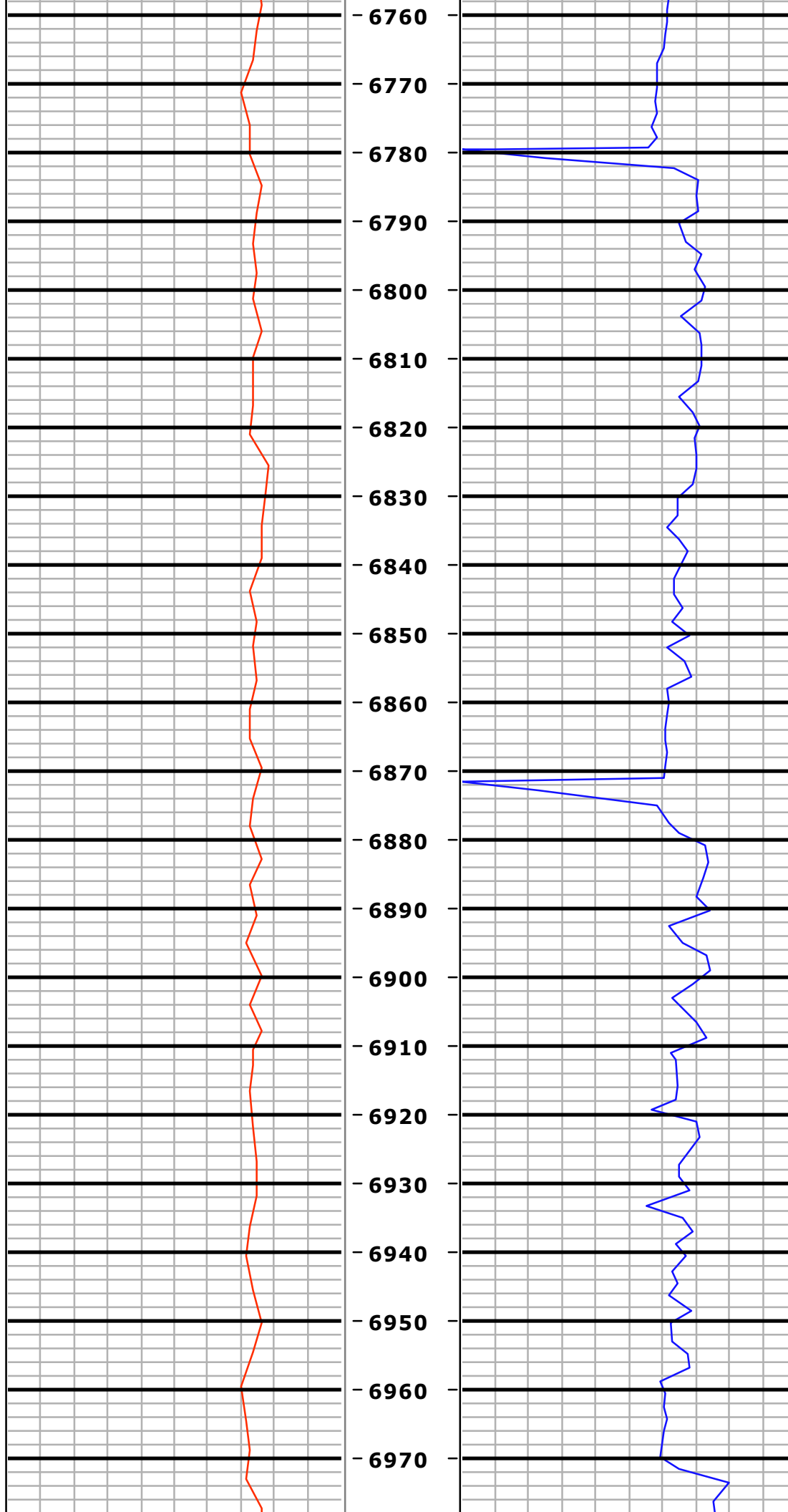






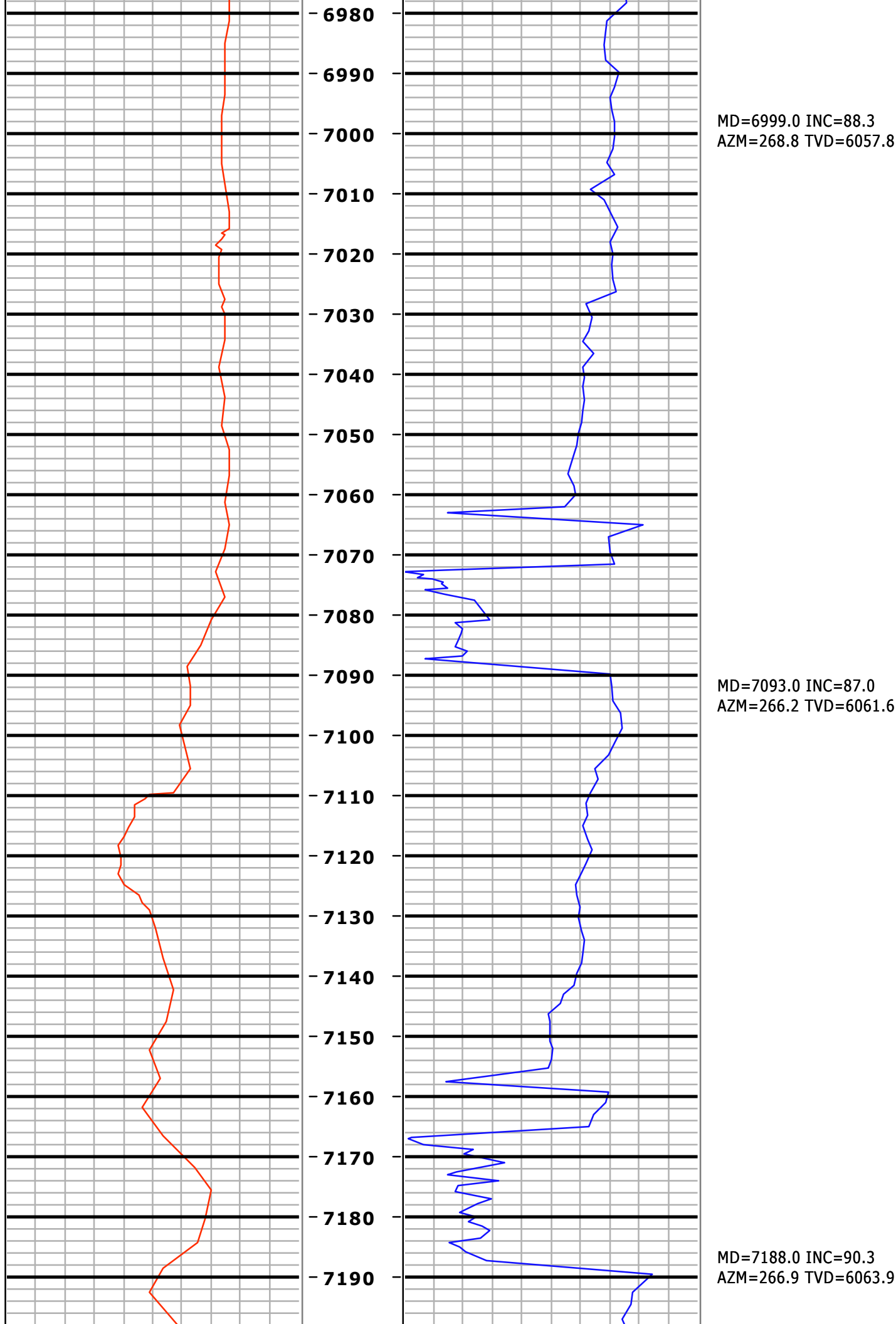
MD=6623.0 INC=88.9  
AZM=267.5 TVD=6054.2

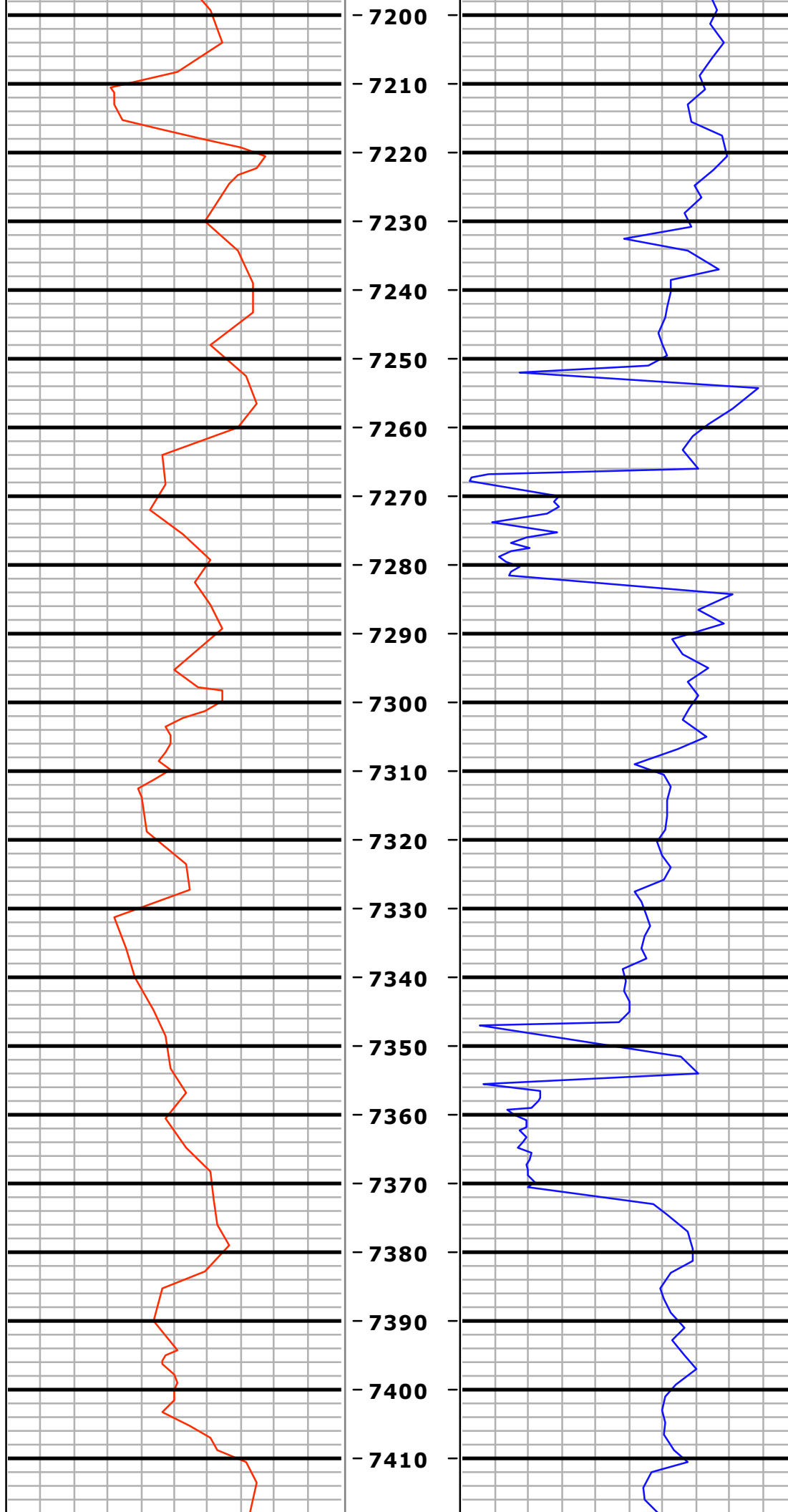
MD=6715.0 INC=89.8  
AZM=268.0 TVD=6055.2



MD=6808.0 INC=90.0  
AZM=268.1 TVD=6055.4

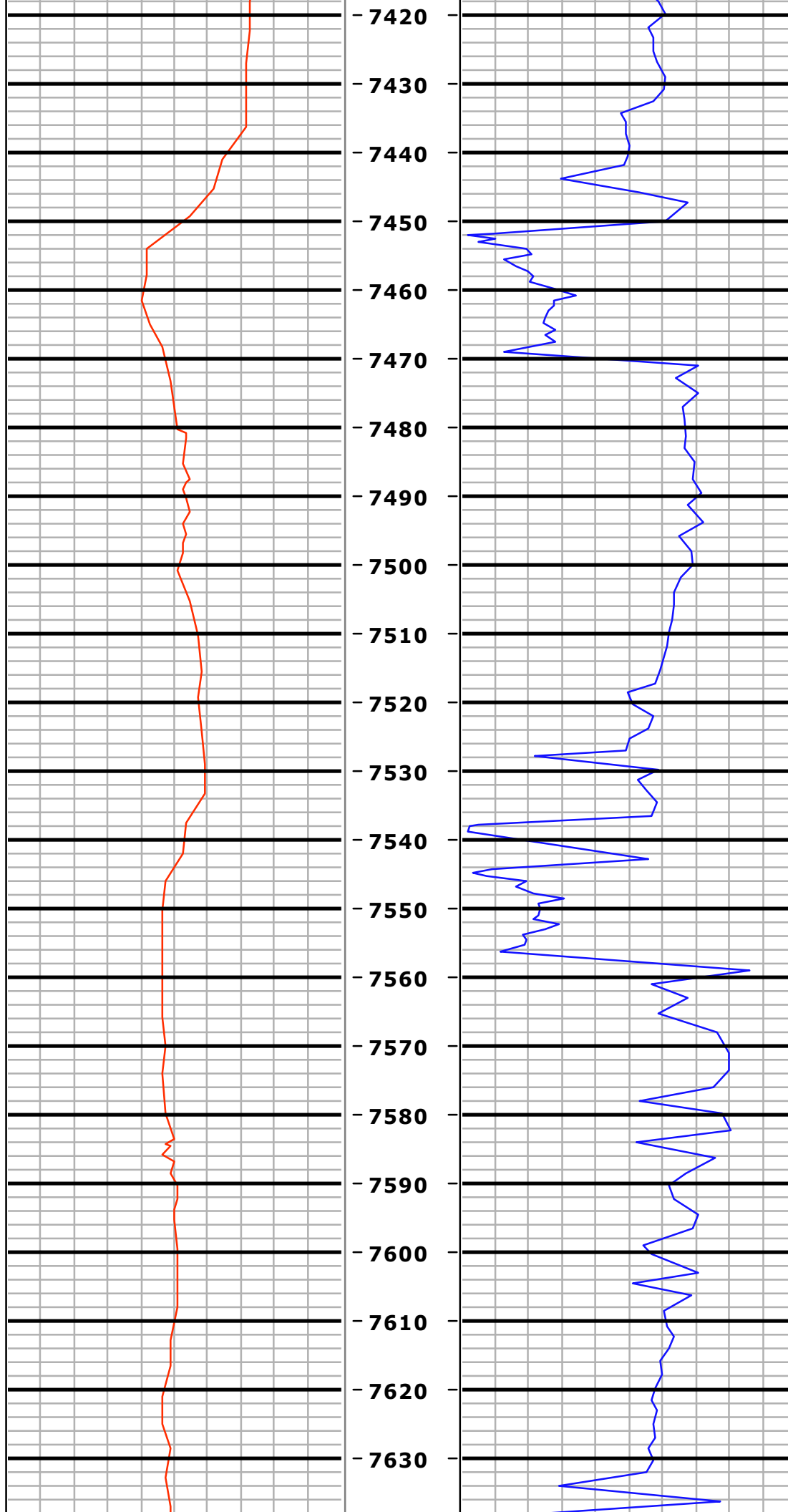
MD=6904.0 INC=89.4  
AZM=268.3 TVD=6055.9





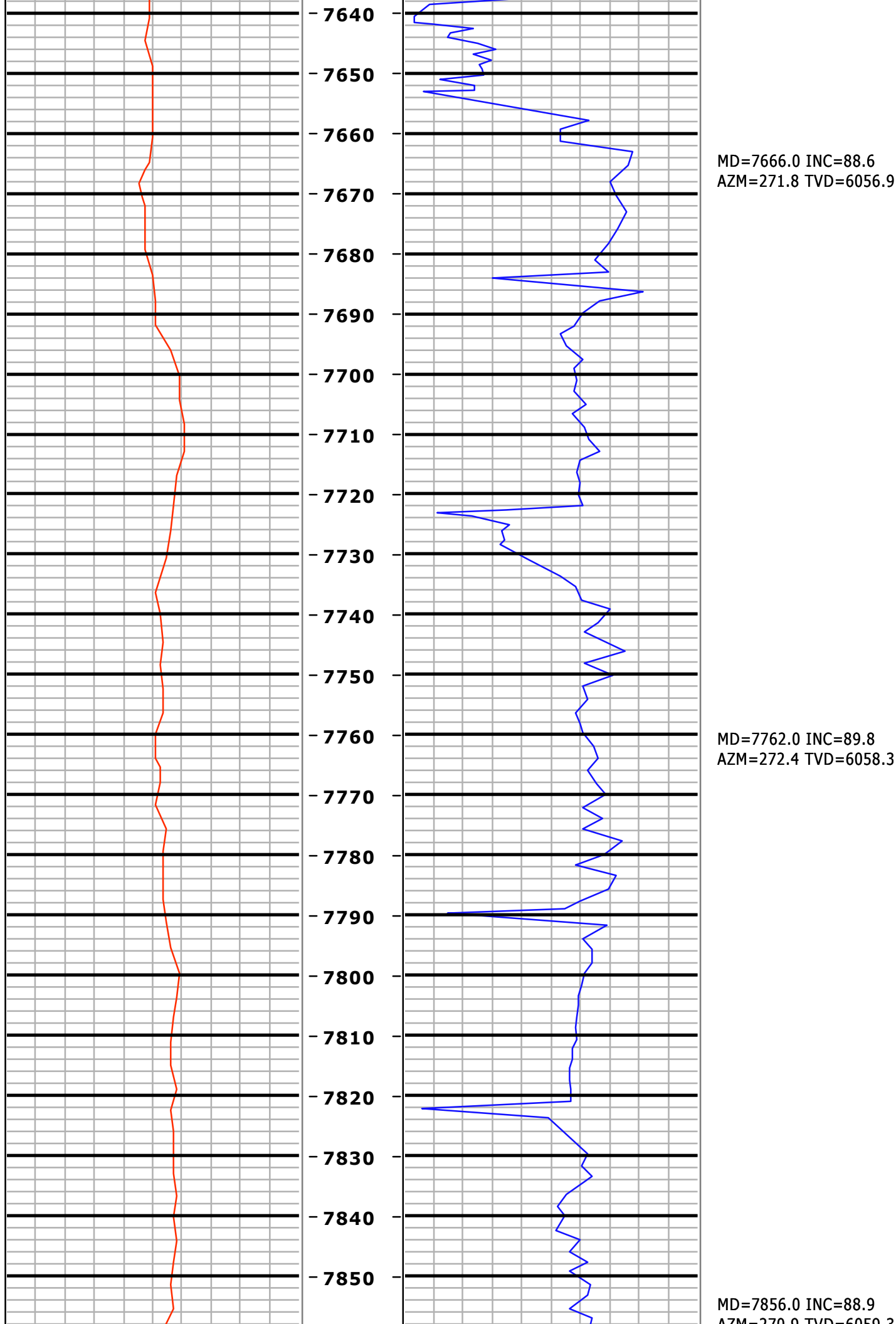
MD=7284.0 INC=91.7  
AZM=268.3 TVD=6062.2

MD=7380.0 INC=91.5  
AZM=270.2 TVD=6059.5

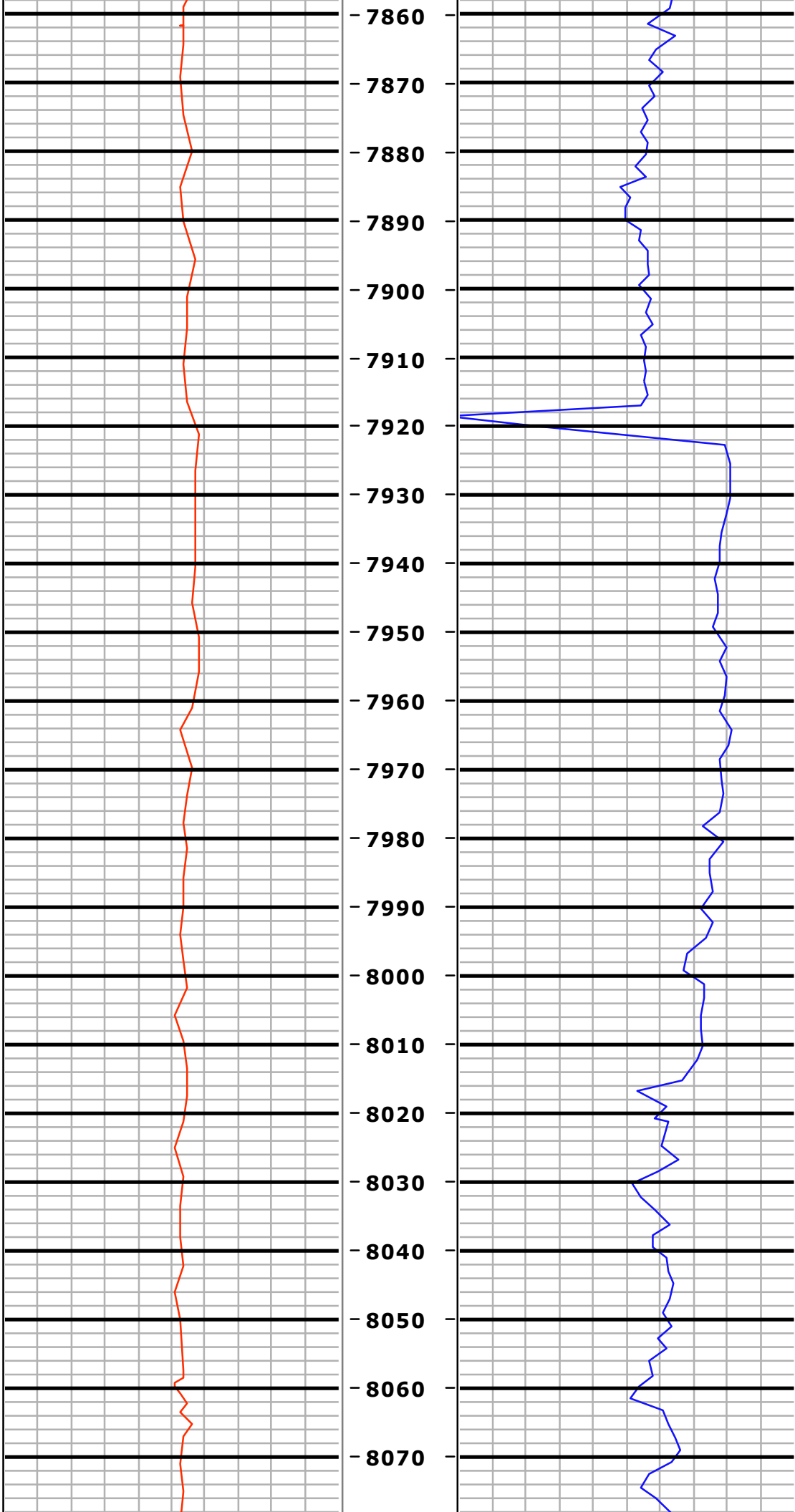


MD=7475.0 INC=90.9  
AZM=271.2 TVD=6057.5

MD=7571.0 INC=90.6  
AZM=272.1 TVD=6056.3

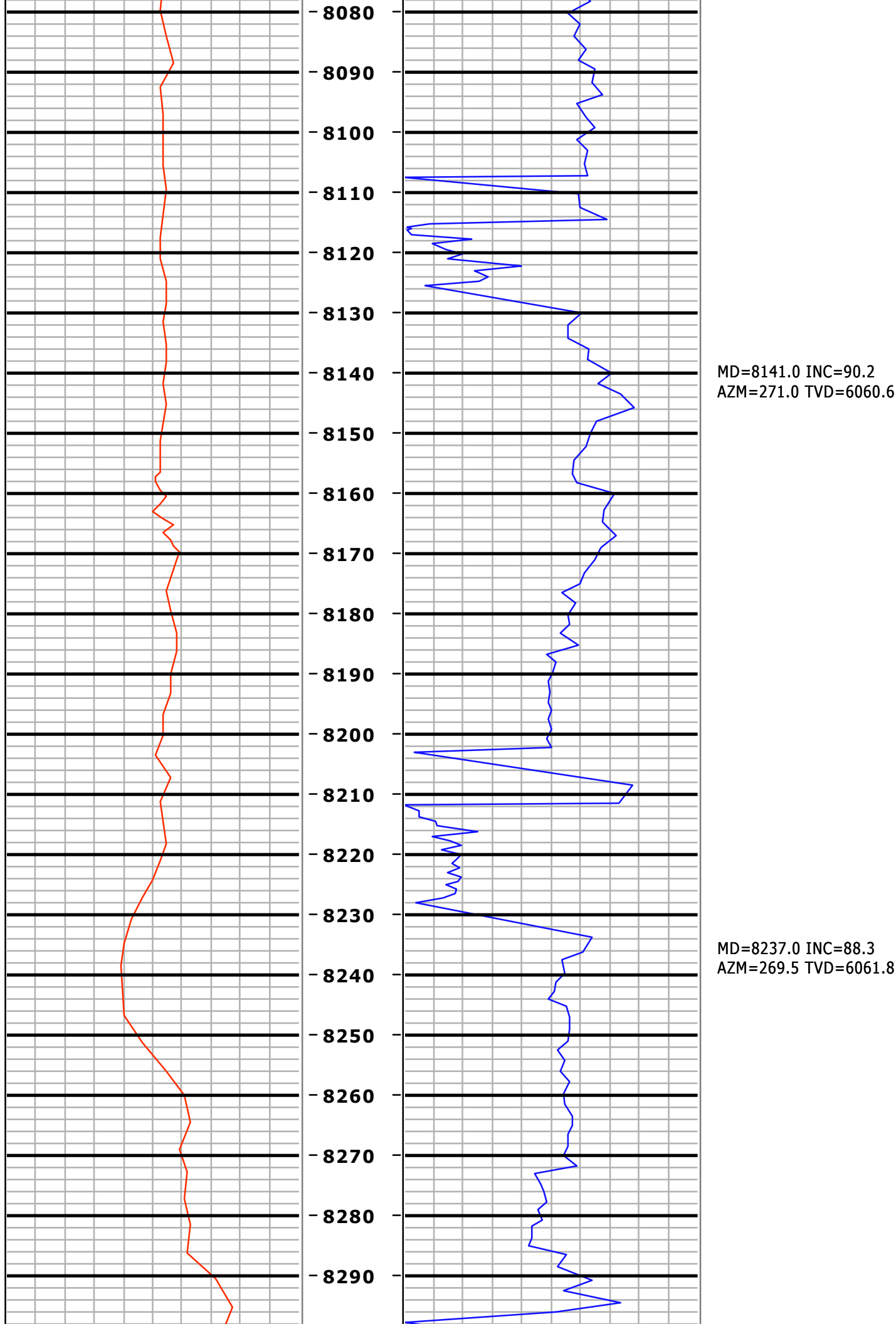


AZM=270.9 TVD=6059.5



MD=7950.0 INC=89.5  
AZM=270.3 TVD=6060.7

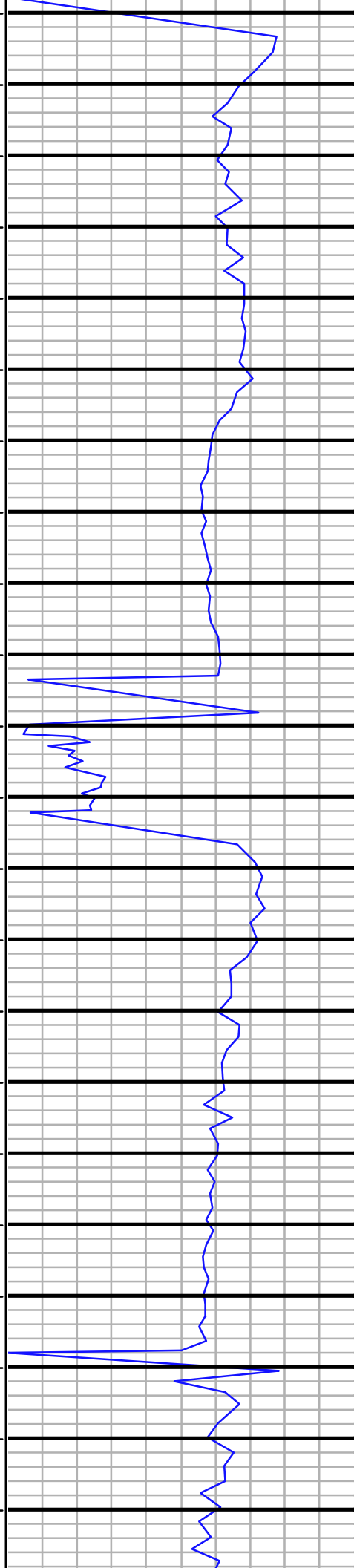
MD=8045.0 INC=90.2  
AZM=271.1 TVD=6060.9







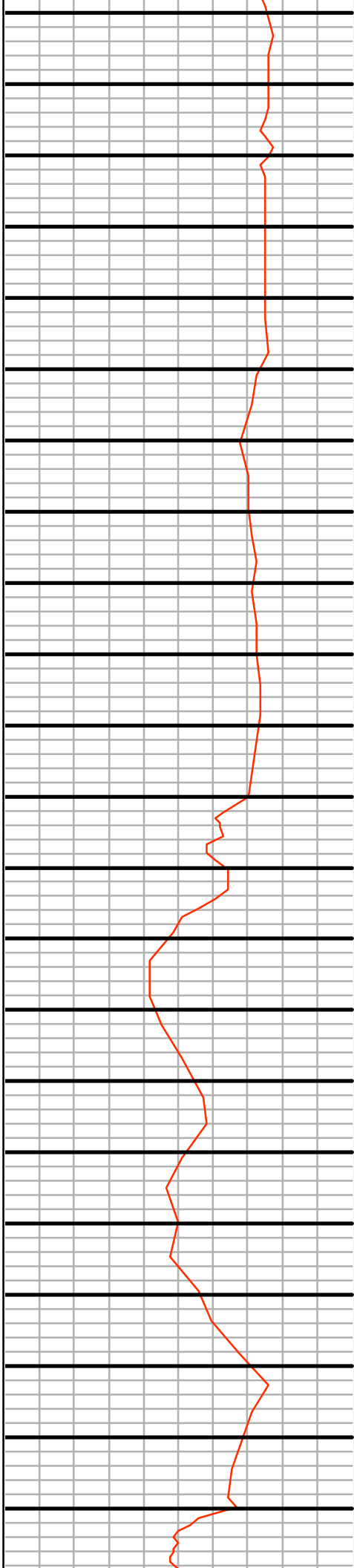
8300  
8310  
8320  
8330  
8340  
8350  
8360  
8370  
8380  
8390  
8400  
8410  
8420  
8430  
8440  
8450  
8460  
8470  
8480  
8490  
8500  
8510



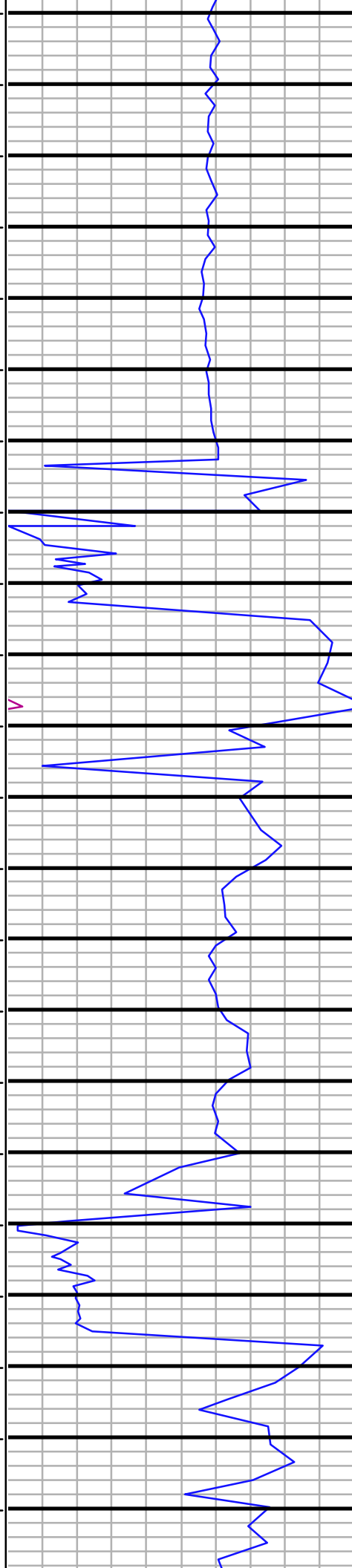
MD=8331.0 INC=88.4  
AZM=268.9 TVD=6064.5

MD=8426.0 INC=90.5  
AZM=268.4 TVD=6065.4

MD=8521.0 INC=90.5



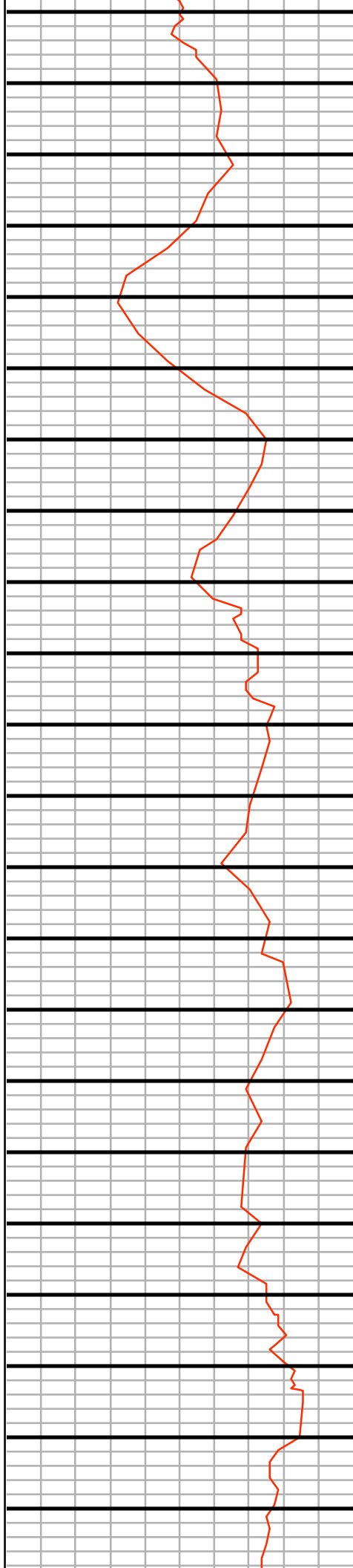
8520  
8530  
8540  
8550  
8560  
8570  
8580  
8590  
8600  
8610  
8620  
8630  
8640  
8650  
8660  
8670  
8680  
8690  
8700  
8710  
8720  
8730



MD=8521.0 INC=89.5  
AZM=266.8 TVD=6065.4

MD=8617.0 INC=91.7  
AZM=267.6 TVD=6064.4

MD=8713.0 INC=91.4  
AZM=268.9 TVD=6061.8



8740

8750

8760

8770

8780

8790

8800

8810

8820

8830

8840

8850

8860

8870

8880

8890

8900

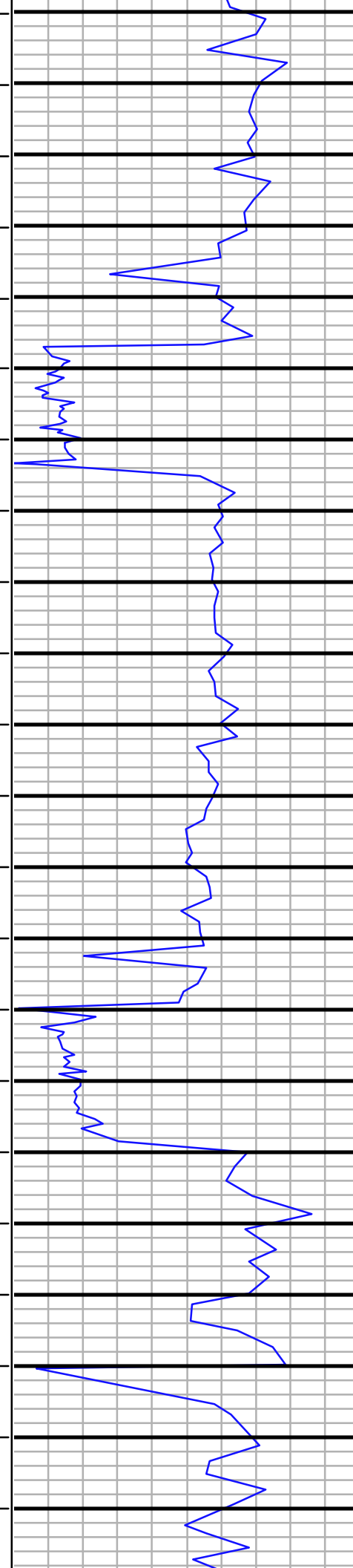
8910

8920

8930

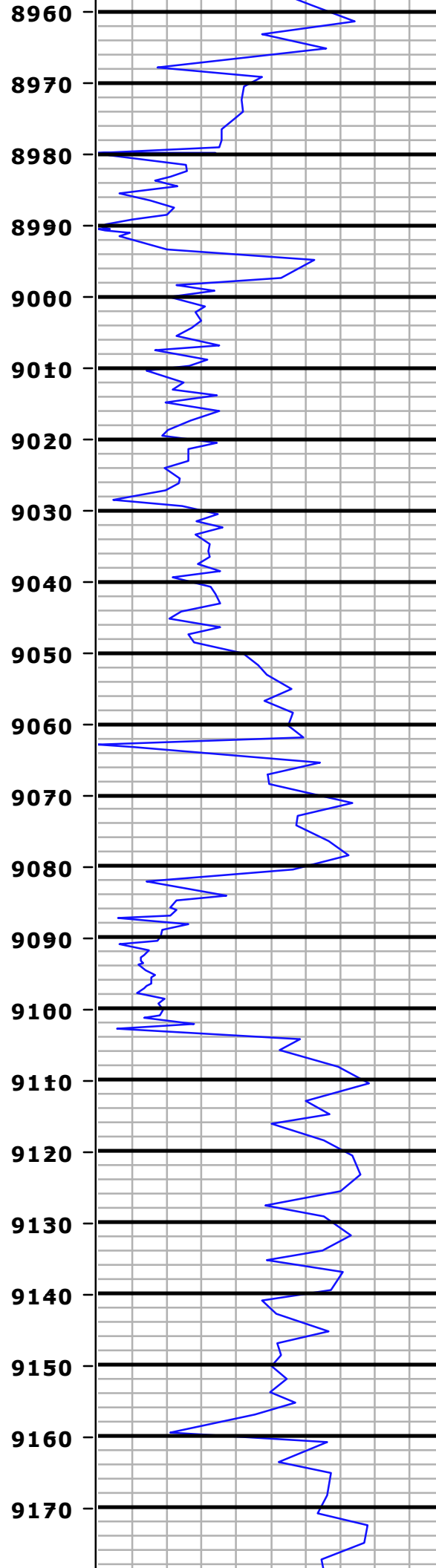
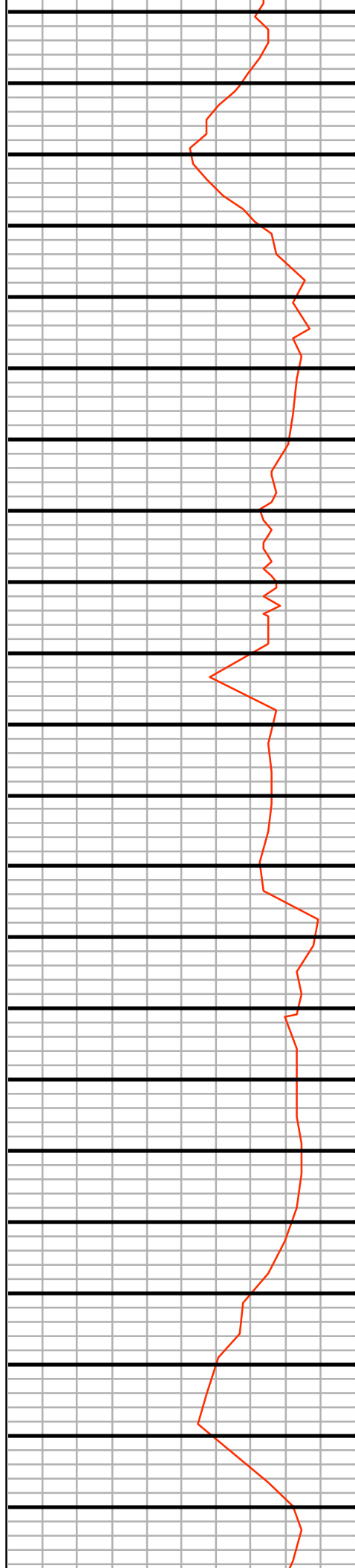
8940

8950



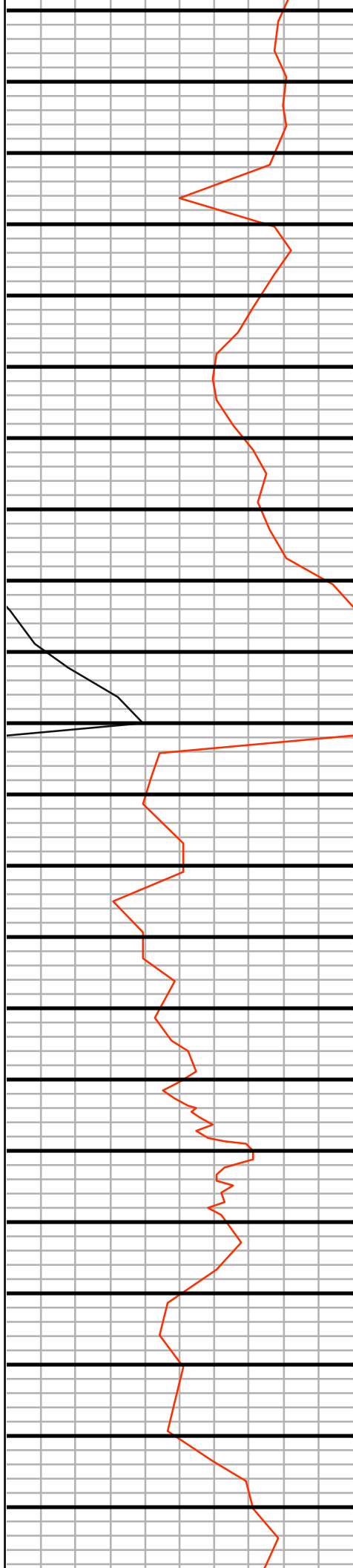
MD=8809.0 INC=91.2  
AZM=270.1 TVD=6059.7

MD=8905.0 INC=90.8  
AZM=271.0 TVD=6058.0



MD=9001.0 INC=90.8  
AZM=271.3 TVD=6056.6

MD=9096.0 INC=89.7  
AZM=272.3 TVD=6056.2



9180

9190

9200

9210

9220

9230

9240

9250

9260

9270

9280

9290

9300

9310

9320

9330

9340

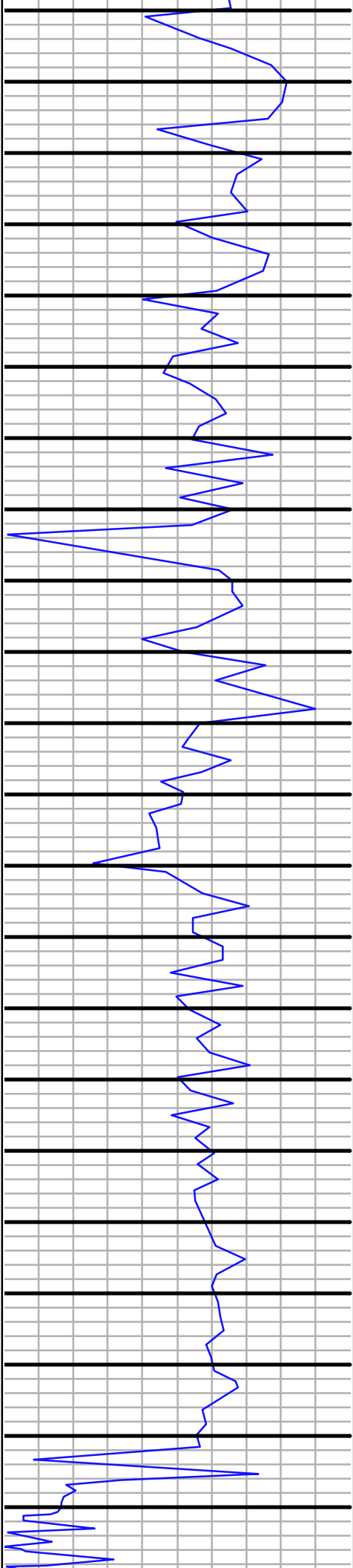
9350

9360

9370

9380

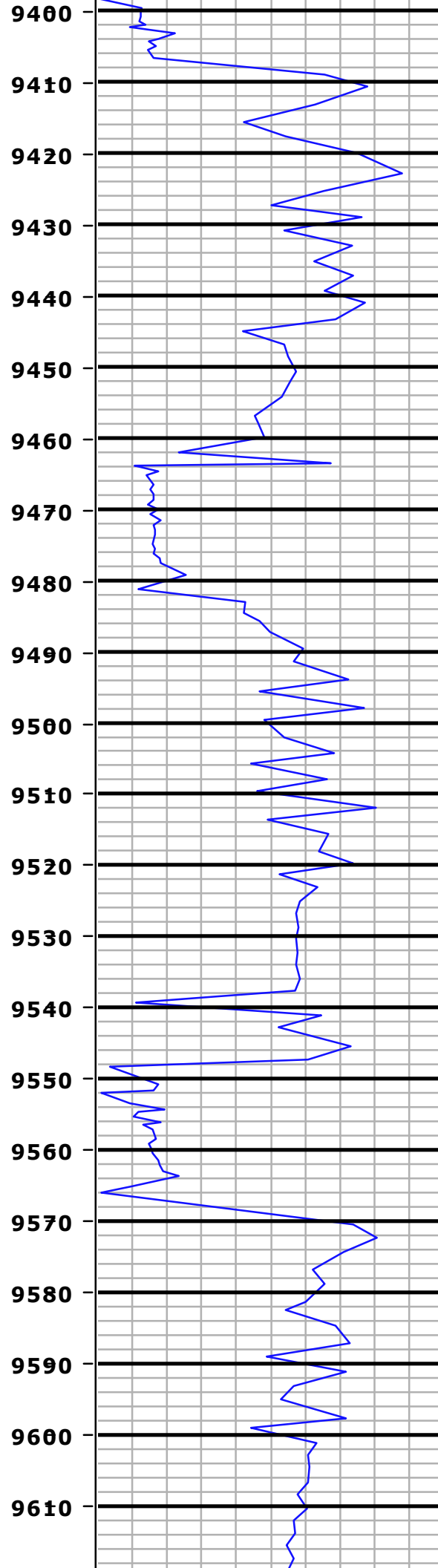
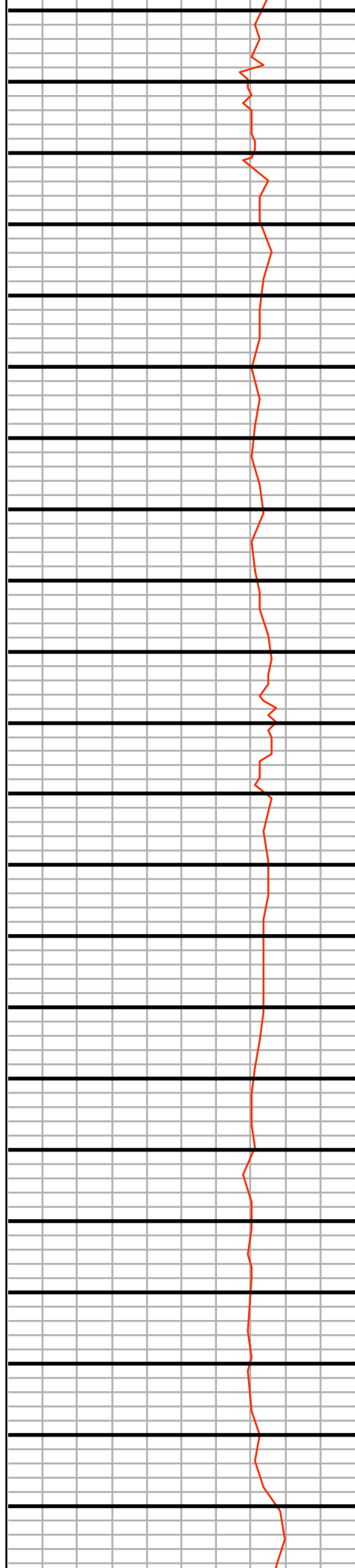
9390



MD=9192.0 INC=89.4  
AZM=272.4 TVD=6057.0

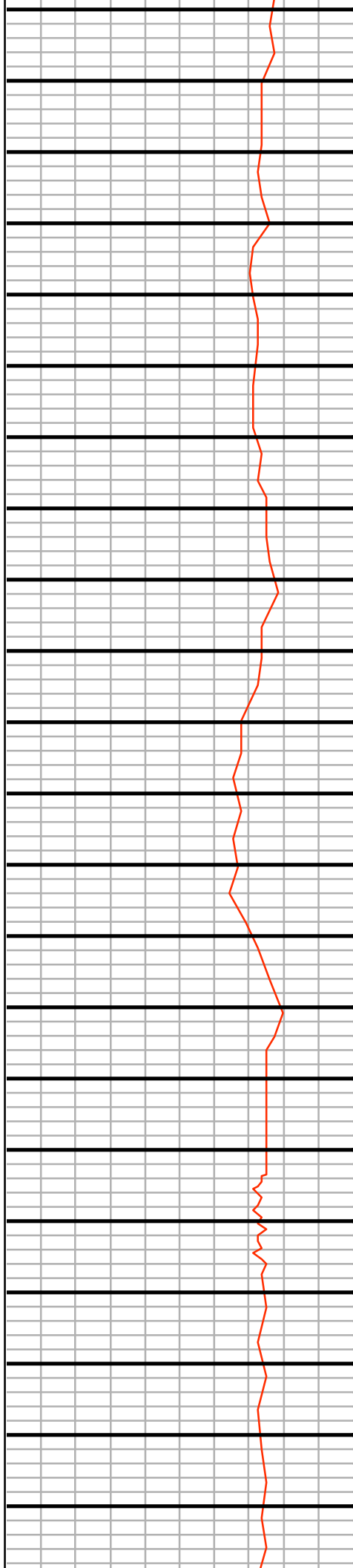
MD=9286.0 INC=90.4  
AZM=272.5 TVD=6057.2

MD=9382.0 INC=91.9  
AZM=272.5 TVD=6055.2



MD=9477.0 INC=90.4  
AZM=269.5 TVD=6053.3

MD=9573.0 INC=88.9  
AZM=266.6 TVD=6053.9



9620

9630

9640

9650

9660

9670

9680

9690

9700

9710

9720

9730

9740

9750

9760

9770

9780

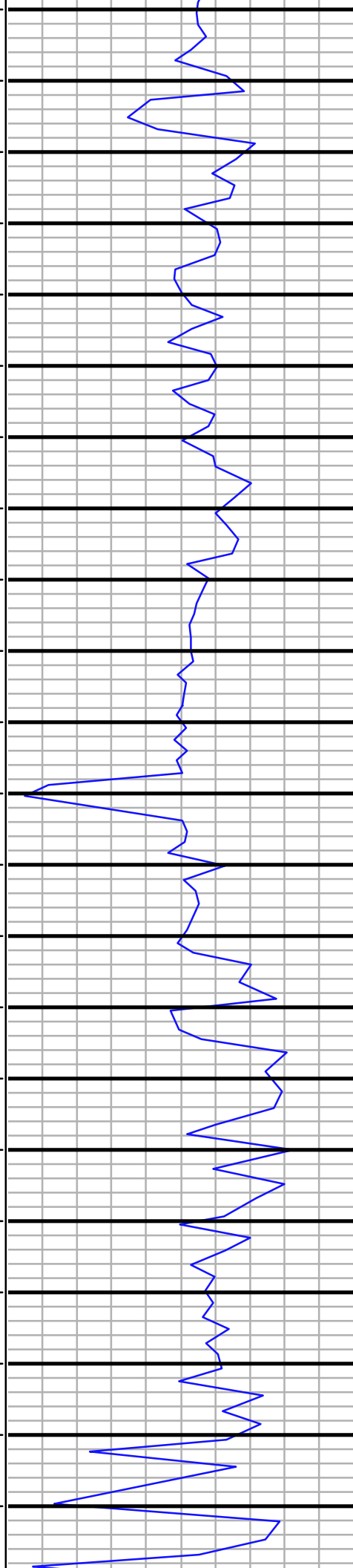
9790

9800

9810

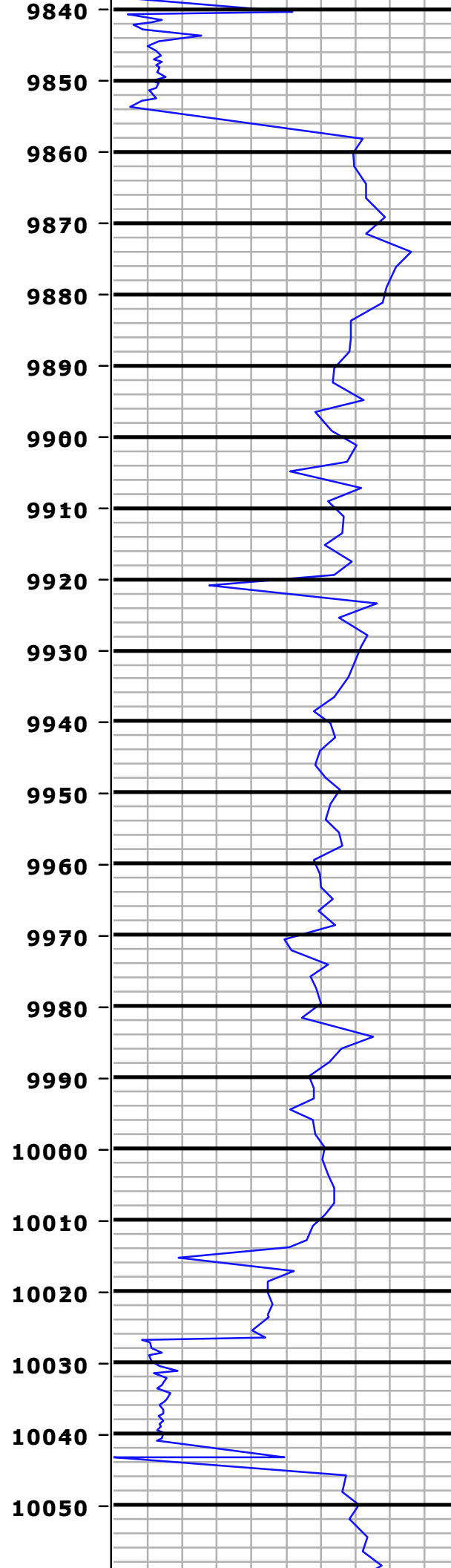
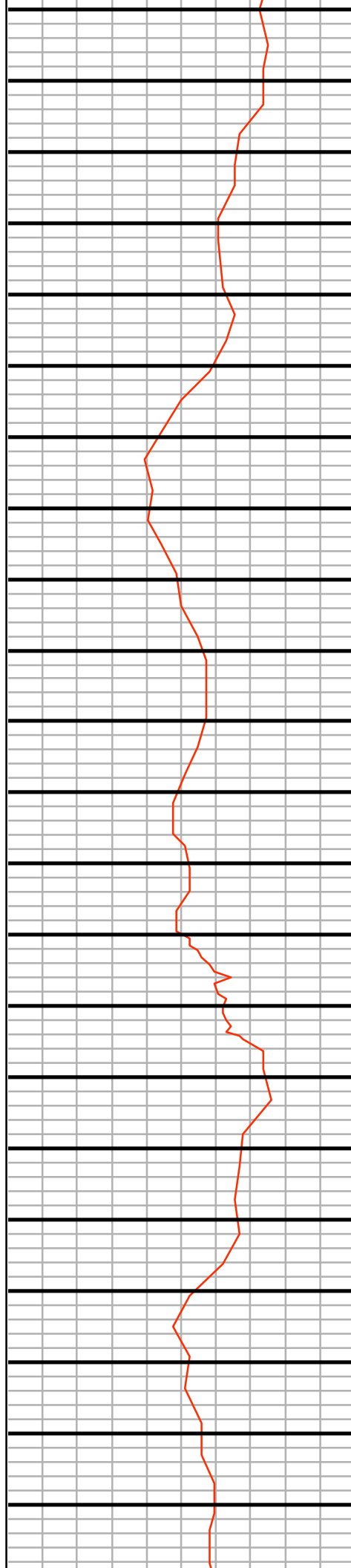
9820

9830



MD=9667.0 INC=89.2  
AZM=266.1 TVD=6055.5

MD=9761.0 INC=88.8  
AZM=265.4 TVD=6057.1

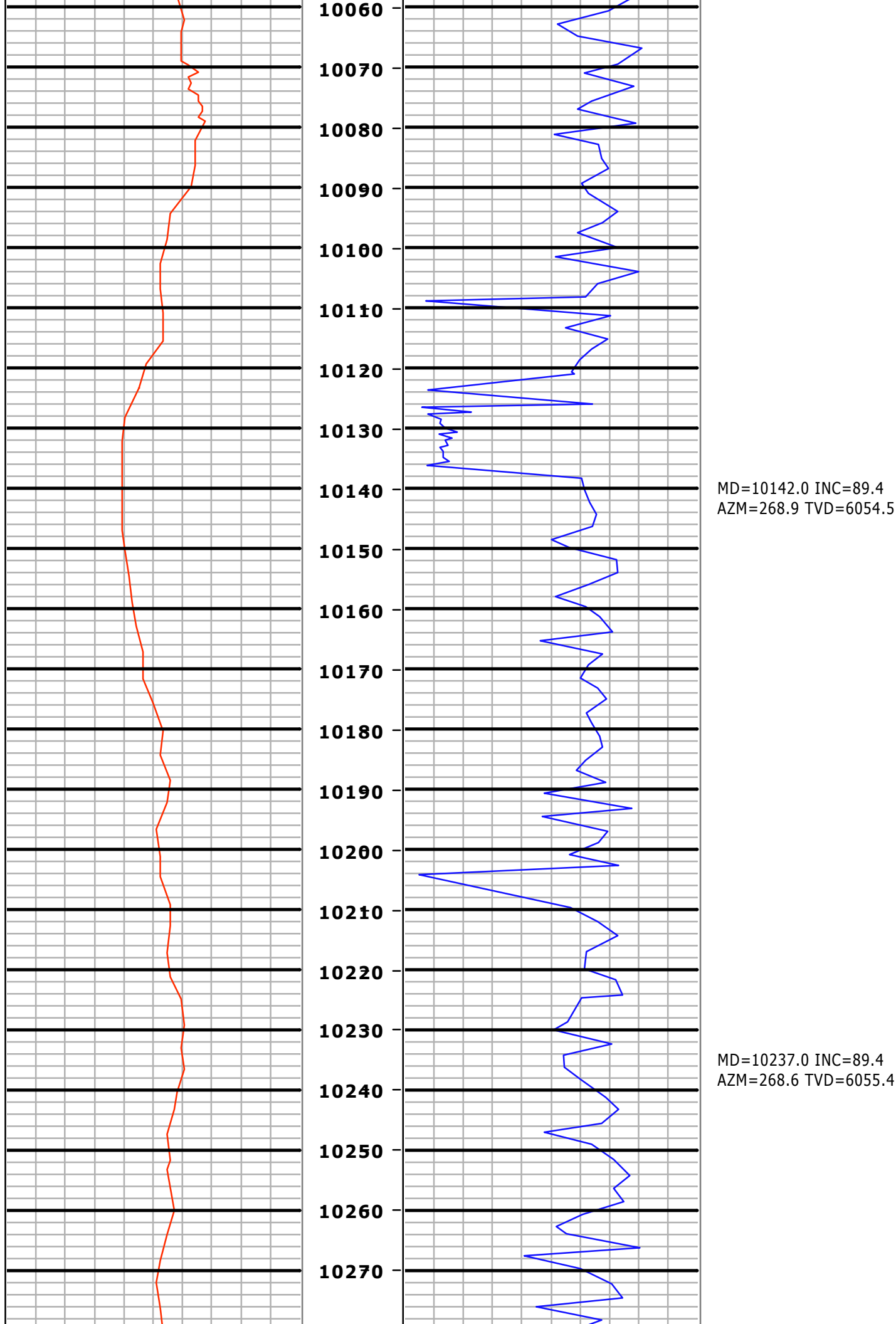


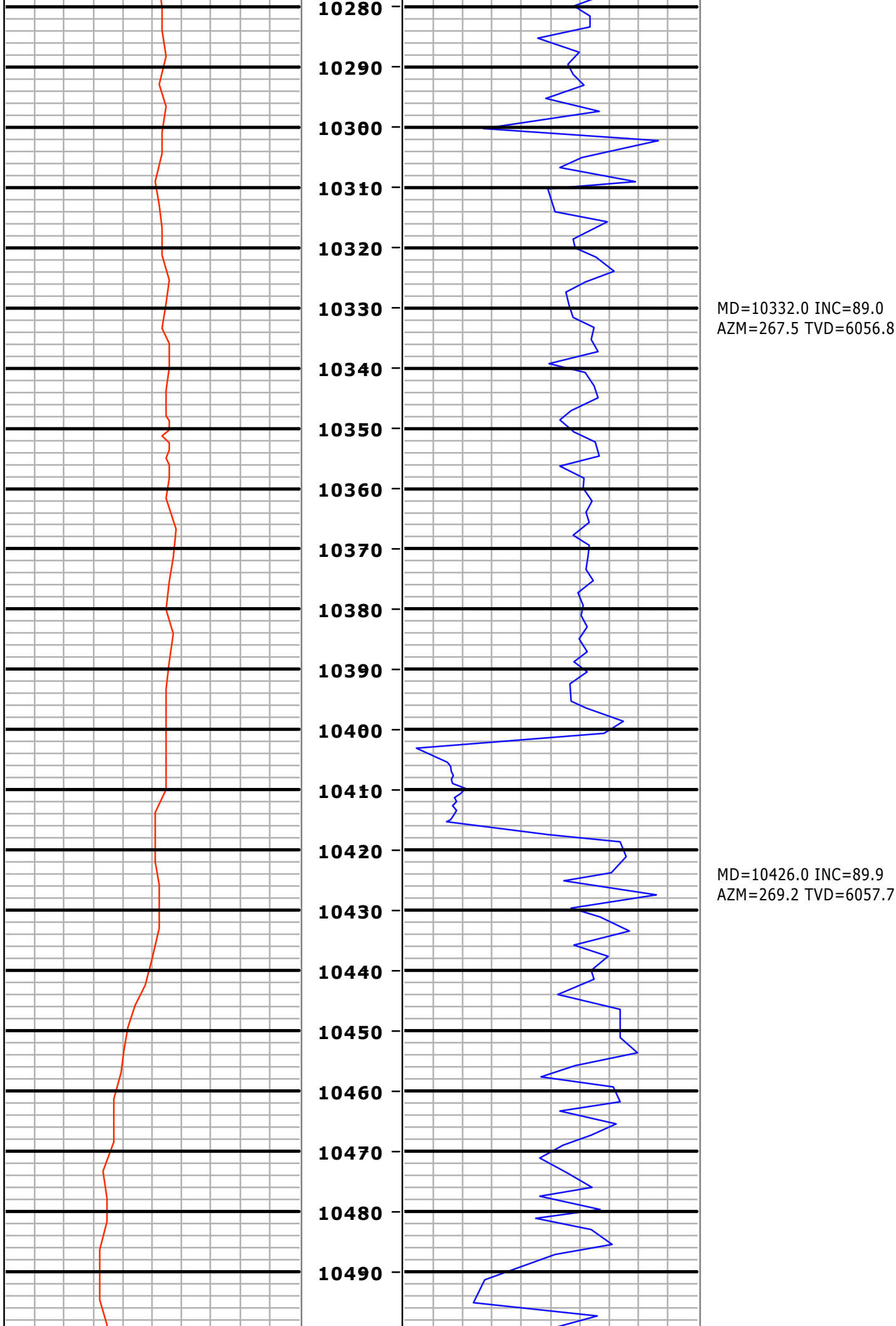
MD=9856.0 INC=90.4  
AZM=267.6 TVD=6057.8

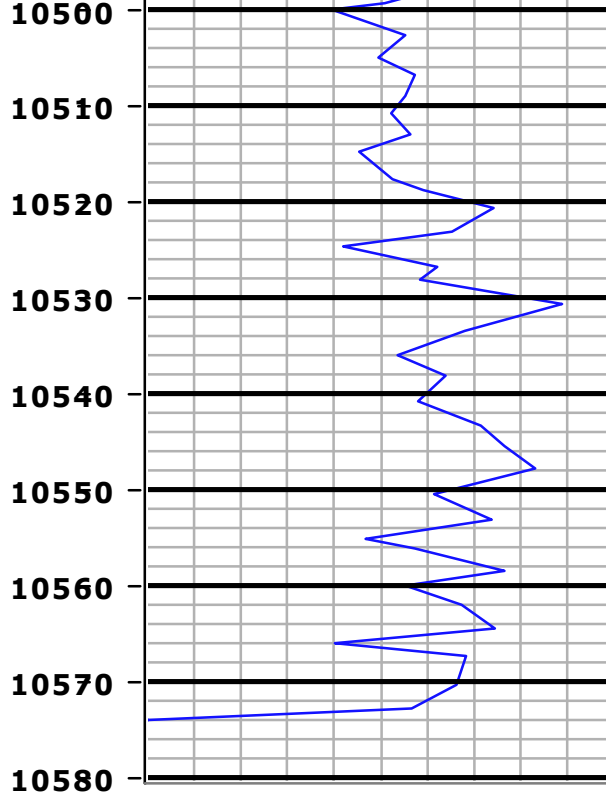
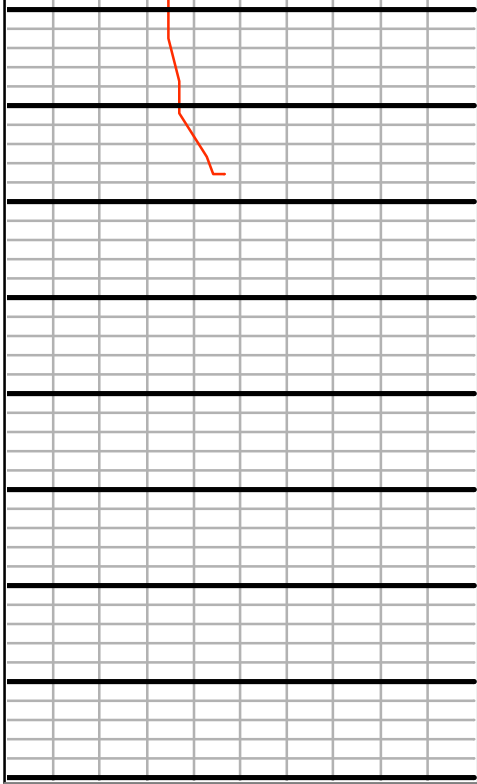
MD=9951.0 INC=91.5  
AZM=267.8 TVD=6056.2

MD=10046.0 INC=90.6  
AZM=268.9 TVD=6054.5









MD=10507.0 INC=90.0  
AZM=268.8 TVD=6057.7

<b>0</b>	Gamma [AAPI]	<b>200</b>
<b>200</b>	Gamma [AAPI]	<b>400</b>

Feet  
5":100'  
MD

<b>0</b>	ROP [ft per hr]	<b>500</b>
<b>500</b>	ROP [ft per hr]	<b>1000</b>

Mezintel

Client: **Bonanza Creek**

Well Name: **State Pronghorn 44-14-29HNB**

API/UWI:

Well Lic:

GDAT: **1983**

Surface LSD:

KB: **4618**

State/Prov: **Colorado**

Job #: **2015-006-25**GL: **4601**

Country: **U.S.A.**

MWD Kit:

DF: **17.00**