

RECEIVED

JUL 17 1986

COLO. OIL & GAS CONS. COMM.

Dresser Atlas

DIRE 5551 R

DUAL INDUCTION
FOCUSED LOG

01727411

FILE NO.

COMPANY DIVERSIFIED RESOURCES LIMITED

API NO.

WELL FEDERAL WILDHORSE NO.10-31FIELD WILDHORSE EXTENSIONCOUNTY WELD STATE COLORADO

THANKS

LOCATION:

NW SE

SEC 31 TWP 8 N RGE 58 W

OTHER SERVICES

CALC/GR
PROLOGPERMANENT DATUM G.L.ELEV. 4776LOGGING MEASURED FROM K.B. 9 FT. ABOVE P.D.DRILLING MEASURED FROM K.B.

ELEVATIONS

KB 4785

DF

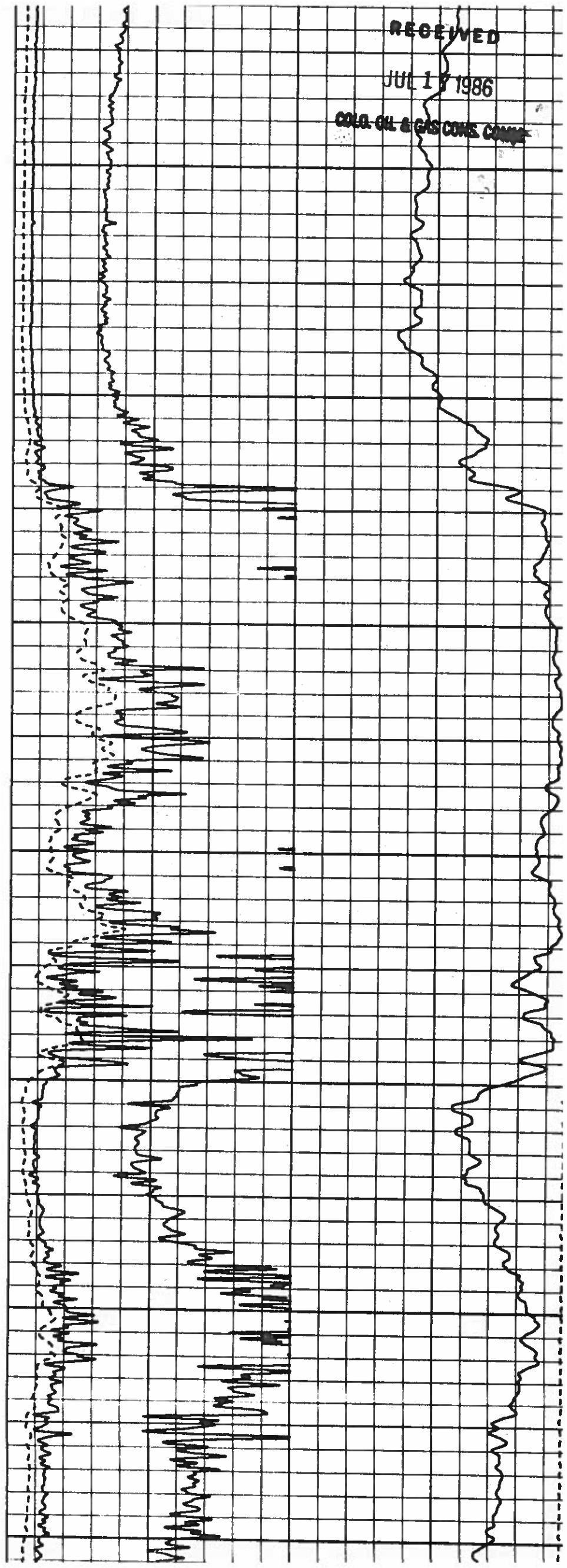
GL 4776

DATE	11-2-85		
RUN	1		
SERVICE ORDER	97791		
DEPTH-DRILLER	6490		
DEPTH-LOGGER	6493		
BOTTOM LOGGED INTERVAL	6491		
TOP LOGGED INTERVAL	CSG.		
CASING - DRILLER	8-5/8 220		
CASING - LOGGER	220		
BIT SIZE	7 7/8		
TYPE FLUID IN HOLE	QUEBRACHO		
DENSITY / VISCOSITY	9.6	65	
PH / FLUID LOSS	10.0	8.5	
SOURCE OF SAMPLE	FLOWLINE		
RM AT MEAS. TEMP.	2.96	0 %	
RMF AT MEAS. TEMP.	2.22	0 %	
RMC AT MEAS. TEMP.	3.70	0 %	
SOURCE OF RMF / RMC	CALC	CALC	
RM AT BHT	1.73	0 161	
TIME SINCE CIRCULATION	3 HRS		
MAX. REC. TEMP. DEG. F	161		
EQUIP. NO. / LOC.	6270	F.M.	
RECORDED BY	JL PATTERSON		
WITNESSED BY	MR. SIMMONS		

RECEIVED

JUL 18 1986

COLA OIL & GAS CORP. CORP.



05500 05600 05700 05800 05900 06000 0610

