

# PETROLEUM DEVELOPMENT CORP DJ Basin

Well Name: **Lajco 17U-343**

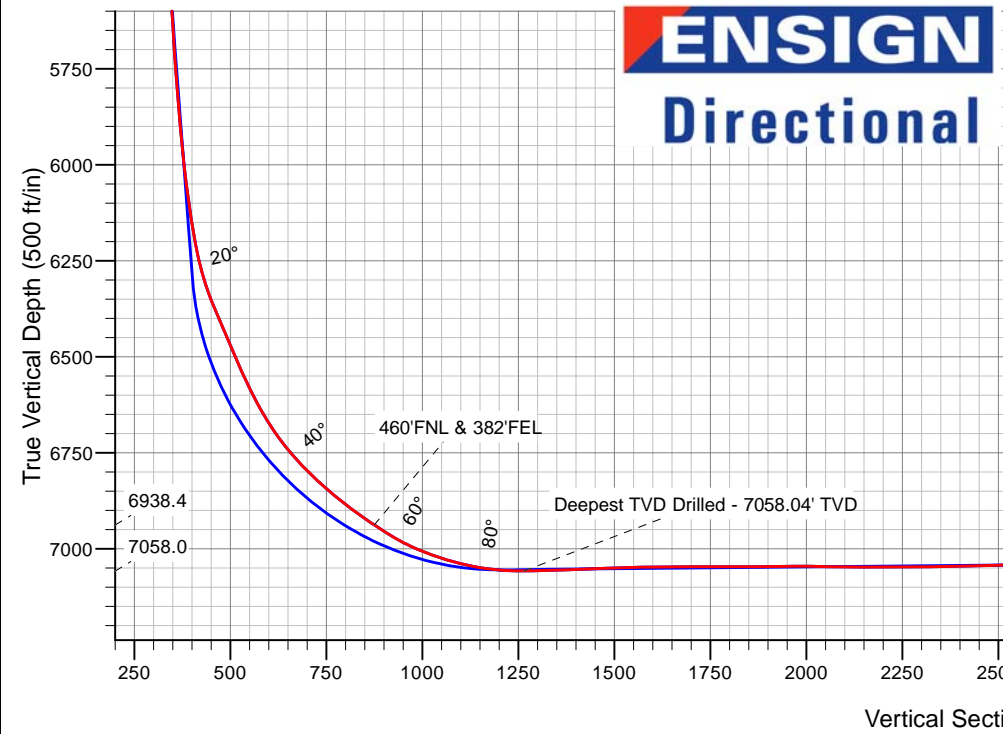
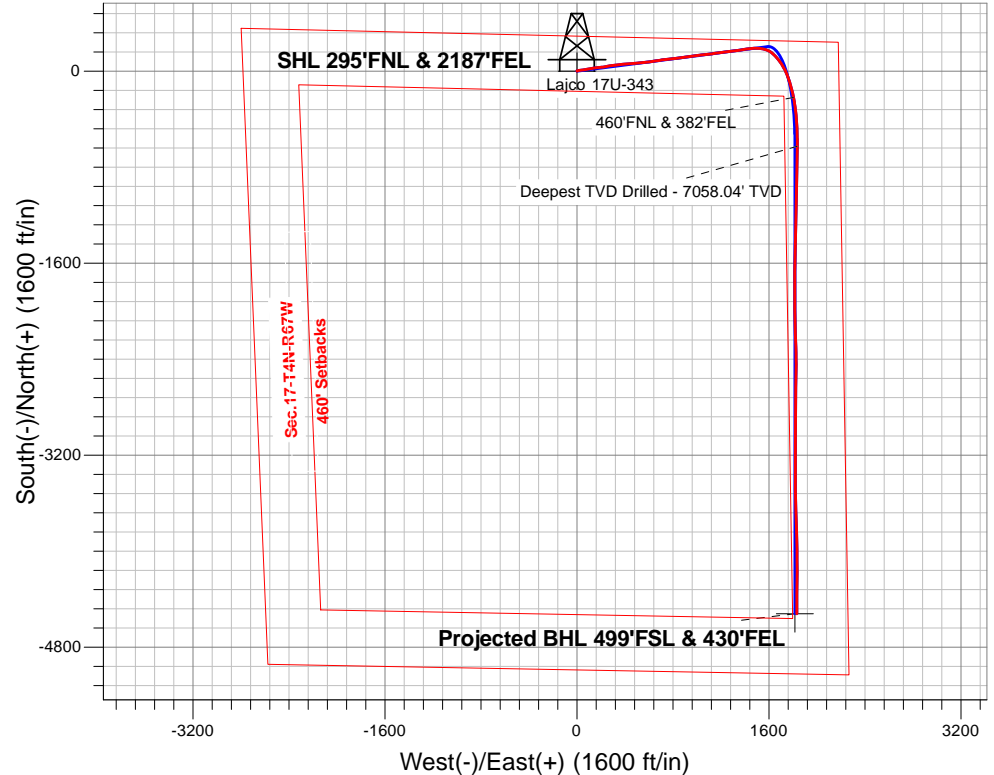
Surface Location: Lajco 4N67W17R Pad Sec.17-T4N-R67W  
 North American Datum 1983 , US State Plane 1983, Colorado Northern Zone  
 Ground Elevation: 4794.0

+N/-S	+E/-W	Northing	Easting	Latitude	Longitude	Slot
0.0	0.0	359756.78	3163452.78	40.319450	-104.913810	

RKB - 13' WELL @ 4807.0ft (RKB - 13')

## FINAL SURVEY

**Projected Bottom Hole Location**  
**11663'MD 7023'TVD 4522'S & 1833'E of SHL**  
**89.9 degree Incl @ 179.4 degree AZM**

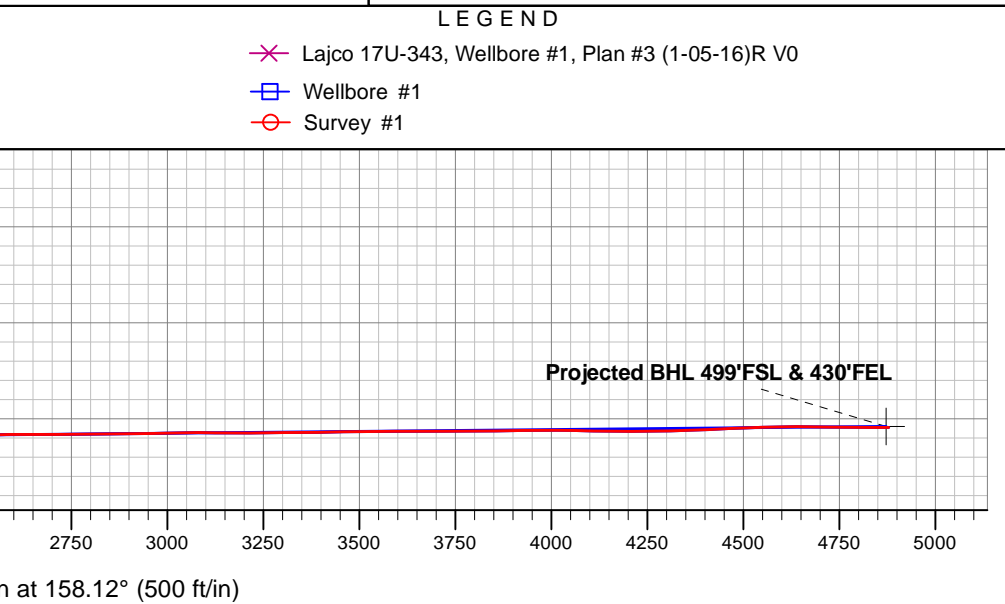


Lajco 4N67W17R Pad Sec.17-T4N-R67W  
 Lajco 17U-343  
 Wellbore #1  
 7:41, January 12 2016

ANNOTATIONS		
TVD	MD	Annotation
6938.4	7332.6	460'FNL & 382'FEL
7058.0	7765.0	Deepest TVD Drilled - 7058.04' TVD

### LEGEND

- ✕ Lajco 17U-343, Wellbore #1, Plan #3 (1-05-16)R V0
- Wellbore #1
- Survey #1





# **PETROLEUM DEVELOPMENT CORP DJ Basin**

**SEC.17-T4N-R67W**

**Lajco 4N67W17R Pad Sec.17-T4N-R67W**

**Lajco 17U-343**

**Wellbore #1**

**Survey: Survey #1**

## **Standard Survey Report**

**12 January, 2016**



<b>Company:</b>	PETROLEUM DEVELOPMENT CORP DJ Basin	<b>Local Co-ordinate Reference:</b>	Well Lajco 17U-343
<b>Project:</b>	SEC.17-T4N-R67W	<b>TVD Reference:</b>	WELL @ 4807.0ft (RKB - 13')
<b>Site:</b>	Lajco 4N67W17R Pad Sec.17-T4N-R67W	<b>MD Reference:</b>	WELL @ 4807.0ft (RKB - 13')
<b>Well:</b>	Lajco 17U-343	<b>North Reference:</b>	True
<b>Wellbore:</b>	Wellbore #1	<b>Survey Calculation Method:</b>	Minimum Curvature
<b>Design:</b>	Wellbore #1	<b>Database:</b>	US_EDM

<b>Project</b>	SEC.17-T4N-R67W, Weld County, Colorado		
<b>Map System:</b>	US State Plane 1983	<b>System Datum:</b>	Mean Sea Level
<b>Geo Datum:</b>	North American Datum 1983		Using Well Reference Point
<b>Map Zone:</b>	Colorado Northern Zone		Using geodetic scale factor

<b>Site</b>	Lajco 4N67W17R Pad Sec.17-T4N-R67W				
<b>Site Position:</b>		<b>Northing:</b>	1,359,711.77 usft	<b>Latitude:</b>	40.319300
<b>From:</b>	Lat/Long	<b>Easting:</b>	3,164,903.08 usft	<b>Longitude:</b>	-104.908610
<b>Position Uncertainty:</b>	0.0 ft	<b>Slot Radius:</b>	13-3/16 "	<b>Grid Convergence:</b>	0.38 °

<b>Well</b>	Lajco 17U-343					
<b>Well Position</b>	<b>+N/-S</b>	0.0 ft	<b>Northing:</b>	1,359,756.78 usft	<b>Latitude:</b>	40.319450
	<b>+E/-W</b>	0.0 ft	<b>Easting:</b>	3,163,452.78 usft	<b>Longitude:</b>	-104.913810
<b>Position Uncertainty</b>		0.0 ft	<b>Wellhead Elevation:</b>	ft	<b>Ground Level:</b>	4,794.0 ft

<b>Wellbore</b>	Wellbore #1				
<b>Magnetics</b>	<b>Model Name</b>	<b>Sample Date</b>	<b>Declination (°)</b>	<b>Dip Angle (°)</b>	<b>Field Strength (nT)</b>
	IGRF2010	1/5/2016	8.32	66.80	52,594

<b>Design</b>	Wellbore #1				
<b>Audit Notes:</b>					
<b>Version:</b>	1.0	<b>Phase:</b>	ACTUAL	<b>Tie On Depth:</b>	0.0
<b>Vertical Section:</b>	<b>Depth From (TVD) (ft)</b>	<b>+N/-S (ft)</b>	<b>+E/-W (ft)</b>	<b>Direction (°)</b>	
	0.0	0.0	0.0	158.12	

<b>Survey Program</b>	<b>Date</b>	1/12/2016			
<b>From (ft)</b>	<b>To (ft)</b>	<b>Survey (Wellbore)</b>	<b>Tool Name</b>	<b>Description</b>	
104.0	11,663.0	Survey #1 (Wellbore #1)	MWD	MWD - Standard	

<b>Survey</b>										
<b>Measured Depth (ft)</b>	<b>Inclination (°)</b>	<b>Azimuth (°)</b>	<b>Vertical Depth (ft)</b>	<b>+N/-S (ft)</b>	<b>+E/-W (ft)</b>	<b>Vertical Section (ft)</b>	<b>Dogleg Rate (°/100usft)</b>	<b>Build Rate (°/100usft)</b>	<b>Turn Rate (°/100usft)</b>	
0.0	0.00	0.00	0.0	0.0	0.0	0.0	0.00	0.00	0.00	
1.0	0.01	8.70	1.0	0.0	0.0	0.0	0.77	0.77	0.00	
<b>SHL 295°FNL &amp; 2187°FEL</b>										
104.0	0.80	8.70	104.0	0.7	0.1	-0.6	0.77	0.77	0.00	
168.0	0.70	353.00	168.0	1.5	0.1	-1.4	0.36	-0.16	-24.53	
264.0	0.50	338.40	264.0	2.5	-0.1	-2.4	0.26	-0.21	-15.21	
360.0	0.40	335.80	360.0	3.2	-0.4	-3.1	0.11	-0.10	-2.71	
456.0	0.90	81.60	456.0	3.6	0.2	-3.3	1.12	0.52	110.21	
551.0	2.40	79.90	550.9	4.1	2.9	-2.7	1.58	1.58	-1.79	
647.0	3.50	86.20	646.8	4.6	7.8	-1.4	1.19	1.15	6.56	
743.0	4.80	89.50	742.6	4.9	14.8	1.0	1.38	1.35	3.44	

<b>Company:</b>	PETROLEUM DEVELOPMENT CORP DJ Basin	<b>Local Co-ordinate Reference:</b>	Well Lajco 17U-343
<b>Project:</b>	SEC.17-T4N-R67W	<b>TVD Reference:</b>	WELL @ 4807.0ft (RKB - 13')
<b>Site:</b>	Lajco 4N67W17R Pad Sec.17-T4N-R67W	<b>MD Reference:</b>	WELL @ 4807.0ft (RKB - 13')
<b>Well:</b>	Lajco 17U-343	<b>North Reference:</b>	True
<b>Wellbore:</b>	Wellbore #1	<b>Survey Calculation Method:</b>	Minimum Curvature
<b>Design:</b>	Wellbore #1	<b>Database:</b>	US_EDM

Survey										
Measured Depth (ft)	Inclination (°)	Azimuth (°)	Vertical Depth (ft)	+N/-S (ft)	+E/-W (ft)	Vertical Section (ft)	Dogleg Rate (°/100usft)	Build Rate (°/100usft)	Turn Rate (°/100usft)	
839.0	6.80	80.80	838.1	5.8	24.4	3.7	2.27	2.08	-9.06	
935.0	8.00	75.30	933.3	8.4	36.5	5.8	1.45	1.25	-5.73	
1,031.0	9.40	80.40	1,028.2	11.4	50.7	8.3	1.66	1.46	5.31	
1,127.0	10.20	79.50	1,122.8	14.3	66.7	11.6	0.85	0.83	-0.94	
1,202.0	10.50	81.10	1,196.5	16.5	80.0	14.5	0.55	0.40	2.13	
1,319.0	11.40	80.40	1,311.4	20.1	102.0	19.3	0.78	0.77	-0.60	
1,415.0	13.00	81.10	1,405.2	23.4	122.0	23.8	1.67	1.67	0.73	
1,510.0	14.30	83.20	1,497.5	26.4	144.2	29.2	1.46	1.37	2.21	
1,606.0	16.00	82.70	1,590.2	29.5	169.1	35.6	1.78	1.77	-0.52	
1,702.0	18.50	85.30	1,681.9	32.4	197.4	43.5	2.72	2.60	2.71	
1,798.0	16.60	79.90	1,773.4	36.1	226.1	50.8	2.60	-1.98	-5.63	
1,894.0	18.40	82.90	1,865.0	40.4	254.6	57.4	2.10	1.88	3.13	
1,990.0	18.40	80.20	1,956.1	44.8	284.6	64.5	0.89	0.00	-2.81	
2,085.0	16.80	80.70	2,046.6	49.6	312.9	70.6	1.69	-1.68	0.53	
2,181.0	17.80	80.70	2,138.3	54.2	341.1	76.8	1.04	1.04	0.00	
2,277.0	18.00	85.70	2,229.6	57.7	370.4	84.5	1.61	0.21	5.21	
2,373.0	18.50	87.20	2,320.8	59.5	400.4	94.0	0.71	0.52	1.56	
2,469.0	19.20	86.70	2,411.7	61.2	431.3	104.0	0.75	0.73	-0.52	
2,564.0	19.80	86.20	2,501.2	63.2	463.0	113.9	0.66	0.63	-0.53	
2,660.0	18.10	83.00	2,592.0	66.0	494.0	122.8	2.07	-1.77	-3.33	
2,756.0	17.80	84.30	2,683.3	69.3	523.4	130.7	0.52	-0.31	1.35	
2,852.0	17.50	83.70	2,774.8	72.4	552.4	138.7	0.37	-0.31	-0.63	
2,948.0	17.10	82.30	2,866.5	75.8	580.7	146.0	0.60	-0.42	-1.46	
3,044.0	15.90	81.80	2,958.5	79.6	607.7	152.6	1.26	-1.25	-0.52	
3,139.0	16.30	82.50	3,049.8	83.2	633.8	159.0	0.47	0.42	0.74	
3,235.0	16.00	81.60	3,142.0	86.9	660.2	165.4	0.41	-0.31	-0.94	
3,331.0	15.20	80.90	3,234.5	90.8	685.8	171.3	0.86	-0.83	-0.73	
3,427.0	15.50	80.70	3,327.0	94.9	710.8	176.9	0.32	0.31	-0.21	
3,523.0	16.40	84.10	3,419.3	98.3	737.0	183.4	1.35	0.94	3.54	
3,619.0	16.10	82.10	3,511.5	101.6	763.6	190.3	0.66	-0.31	-2.08	
3,714.0	17.70	84.40	3,602.4	104.8	791.1	197.6	1.83	1.68	2.42	
3,810.0	18.10	84.60	3,693.8	107.6	820.4	205.9	0.42	0.42	0.21	
3,906.0	17.50	84.30	3,785.2	110.5	849.6	214.2	0.63	-0.63	-0.31	
4,001.0	15.20	83.60	3,876.3	113.3	876.2	221.5	2.43	-2.42	-0.74	
4,097.0	15.20	83.70	3,968.9	116.0	901.3	228.2	0.03	0.00	0.10	
4,192.0	16.40	81.80	4,060.4	119.3	926.9	234.7	1.38	1.26	-2.00	
4,287.0	17.10	78.10	4,151.3	124.1	953.9	240.3	1.34	0.74	-3.89	
4,383.0	17.80	80.00	4,242.9	129.6	982.1	245.8	0.94	0.73	1.98	
4,478.0	17.20	85.30	4,333.5	133.2	1,010.4	252.9	1.79	-0.63	5.58	
4,574.0	17.10	85.30	4,425.3	135.6	1,038.6	261.3	0.10	-0.10	0.00	
4,670.0	16.80	85.30	4,517.1	137.9	1,066.5	269.5	0.31	-0.31	0.00	
4,766.0	18.20	83.20	4,608.6	140.8	1,095.2	277.5	1.60	1.46	-2.19	
4,862.0	16.40	81.30	4,700.3	144.6	1,123.5	284.5	1.96	-1.88	-1.98	

<b>Company:</b>	PETROLEUM DEVELOPMENT CORP DJ Basin	<b>Local Co-ordinate Reference:</b>	Well Lajco 17U-343
<b>Project:</b>	SEC.17-T4N-R67W	<b>TVD Reference:</b>	WELL @ 4807.0ft (RKB - 13')
<b>Site:</b>	Lajco 4N67W17R Pad Sec.17-T4N-R67W	<b>MD Reference:</b>	WELL @ 4807.0ft (RKB - 13')
<b>Well:</b>	Lajco 17U-343	<b>North Reference:</b>	True
<b>Wellbore:</b>	Wellbore #1	<b>Survey Calculation Method:</b>	Minimum Curvature
<b>Design:</b>	Wellbore #1	<b>Database:</b>	US_EDM

Survey										
Measured Depth (ft)	Inclination (°)	Azimuth (°)	Vertical Depth (ft)	+N/-S (ft)	+E/-W (ft)	Vertical Section (ft)	Dogleg Rate (°/100usft)	Build Rate (°/100usft)	Turn Rate (°/100usft)	
4,958.0	16.10	81.30	4,792.5	148.7	1,150.1	290.7	0.31	-0.31	0.00	
5,054.0	14.80	79.90	4,885.0	152.8	1,175.3	296.2	1.41	-1.35	-1.46	
5,150.0	15.10	83.60	4,977.7	156.4	1,199.8	302.0	1.04	0.31	3.85	
5,245.0	15.30	83.40	5,069.4	159.2	1,224.6	308.6	0.22	0.21	-0.21	
5,341.0	15.70	81.40	5,161.9	162.6	1,250.0	315.0	0.70	0.42	-2.08	
5,437.0	15.50	84.10	5,254.4	165.8	1,275.6	321.5	0.78	-0.21	2.81	
5,533.0	17.00	84.40	5,346.5	168.5	1,302.3	328.9	1.56	1.56	0.31	
5,629.0	17.30	81.60	5,438.3	172.0	1,330.4	336.2	0.91	0.31	-2.92	
5,724.0	16.20	82.70	5,529.3	175.7	1,357.5	342.8	1.20	-1.16	1.16	
5,820.0	16.30	80.20	5,621.4	179.7	1,384.1	349.0	0.74	0.10	-2.60	
5,915.0	16.40	81.10	5,712.6	184.1	1,410.5	354.8	0.29	0.11	0.95	
6,011.0	16.30	83.90	5,804.7	187.6	1,437.2	361.5	0.83	-0.10	2.92	
6,107.0	17.00	85.80	5,896.7	190.1	1,464.6	369.5	0.92	0.73	1.98	
6,202.0	17.00	86.50	5,987.5	191.9	1,492.4	378.1	0.22	0.00	0.74	
6,327.0	16.60	99.70	6,107.2	190.0	1,528.2	393.2	3.06	-0.32	10.56	
6,422.0	17.20	101.70	6,198.1	184.9	1,555.3	408.1	0.88	0.63	2.11	
6,518.0	22.80	111.00	6,288.3	175.3	1,586.6	428.6	6.69	5.83	9.69	
6,614.0	26.20	128.90	6,375.8	155.3	1,620.5	459.8	8.47	3.54	18.65	
6,710.0	24.50	135.40	6,462.6	127.9	1,651.0	496.7	3.39	-1.77	6.77	
6,806.0	25.50	140.00	6,549.6	97.8	1,678.3	534.7	2.28	1.04	4.79	
6,902.0	29.70	147.20	6,634.6	62.0	1,704.5	577.7	5.58	4.38	7.50	
6,998.0	36.30	152.60	6,715.1	16.7	1,730.5	629.4	7.52	6.88	5.63	
7,093.0	44.60	159.10	6,787.4	-39.5	1,755.4	690.9	9.79	8.74	6.84	
7,189.0	49.70	163.90	6,852.7	-106.3	1,777.6	761.1	6.45	5.31	5.00	
7,285.0	54.60	166.90	6,911.6	-179.6	1,796.6	836.2	5.67	5.10	3.13	
7,332.6	56.82	168.78	6,938.4	-218.0	1,804.9	875.0	5.69	4.66	3.95	
<b>460'FNL &amp; 382'FEL</b>										
7,381.0	59.10	170.60	6,964.1	-258.4	1,812.2	915.1	5.69	4.72	3.76	
7,477.0	68.90	173.40	7,006.1	-343.7	1,824.1	998.8	10.54	10.21	2.92	
7,573.0	75.60	177.30	7,035.4	-434.8	1,831.5	1,086.0	7.98	6.98	4.06	
7,669.0	83.40	177.90	7,052.9	-529.0	1,835.4	1,174.9	8.15	8.13	0.63	
7,704.5	85.99	178.90	7,056.1	-564.4	1,836.4	1,208.1	7.81	7.29	2.83	
<b>LPL (17U-343)</b>										
7,765.0	90.40	180.60	7,058.0	-624.8	1,836.6	1,264.3	7.81	7.29	2.80	
<b>Deepest TVD Drilled - 7058.04' TVD</b>										
7,860.0	92.10	180.20	7,056.0	-719.8	1,836.0	1,352.2	1.84	1.79	-0.42	
7,956.0	92.40	180.90	7,052.2	-815.7	1,835.1	1,440.8	0.79	0.31	0.73	
8,051.0	91.20	181.10	7,049.2	-910.6	1,833.4	1,528.3	1.28	-1.26	0.21	
8,147.0	90.50	182.00	7,047.8	-1,006.6	1,830.8	1,616.4	1.19	-0.73	0.94	
8,243.0	90.50	182.50	7,047.0	-1,102.5	1,827.0	1,704.0	0.52	0.00	0.52	
8,339.0	89.50	181.60	7,047.0	-1,198.5	1,823.6	1,791.7	1.40	-1.04	-0.94	
8,434.0	91.00	181.60	7,046.5	-1,293.4	1,820.9	1,878.9	1.58	1.58	0.00	
8,531.0	90.00	180.90	7,045.7	-1,390.4	1,818.8	1,968.1	1.26	-1.03	-0.72	
8,626.0	88.80	180.90	7,046.7	-1,485.4	1,817.3	2,055.6	1.26	-1.26	0.00	

<b>Company:</b>	PETROLEUM DEVELOPMENT CORP DJ Basin	<b>Local Co-ordinate Reference:</b>	Well Lajco 17U-343
<b>Project:</b>	SEC.17-T4N-R67W	<b>TVD Reference:</b>	WELL @ 4807.0ft (RKB - 13')
<b>Site:</b>	Lajco 4N67W17R Pad Sec.17-T4N-R67W	<b>MD Reference:</b>	WELL @ 4807.0ft (RKB - 13')
<b>Well:</b>	Lajco 17U-343	<b>North Reference:</b>	True
<b>Wellbore:</b>	Wellbore #1	<b>Survey Calculation Method:</b>	Minimum Curvature
<b>Design:</b>	Wellbore #1	<b>Database:</b>	US_EDM

Survey										
Measured Depth (ft)	Inclination (°)	Azimuth (°)	Vertical Depth (ft)	+N/-S (ft)	+E/-W (ft)	Vertical Section (ft)	Dogleg Rate (°/100usft)	Build Rate (°/100usft)	Turn Rate (°/100usft)	
8,722.0	90.20	180.80	7,047.5	-1,581.3	1,815.9	2,144.2	1.46	1.46	-0.10	
8,818.0	89.80	180.20	7,047.5	-1,677.3	1,815.1	2,232.9	0.75	-0.42	-0.63	
8,914.0	91.30	179.70	7,046.6	-1,773.3	1,815.2	2,322.1	1.65	1.56	-0.52	
9,010.0	90.30	179.50	7,045.3	-1,869.3	1,815.8	2,411.4	1.06	-1.04	-0.21	
9,105.0	92.10	178.50	7,043.3	-1,964.3	1,817.5	2,500.1	2.17	1.89	-1.05	
9,201.0	90.50	179.40	7,041.1	-2,060.2	1,819.2	2,589.8	1.91	-1.67	0.94	
9,297.0	90.00	180.10	7,040.7	-2,156.2	1,819.7	2,679.1	0.90	-0.52	0.73	
9,393.0	90.00	177.40	7,040.7	-2,252.2	1,821.8	2,768.9	2.81	0.00	-2.81	
9,489.0	90.70	178.50	7,040.1	-2,348.1	1,825.2	2,859.2	1.36	0.73	1.15	
9,584.0	91.40	179.70	7,038.4	-2,443.1	1,826.7	2,947.9	1.46	0.74	1.26	
9,680.0	90.60	181.30	7,036.7	-2,539.1	1,825.8	3,036.6	1.86	-0.83	1.67	
9,776.0	89.10	180.90	7,036.9	-2,635.1	1,824.0	3,125.0	1.62	-1.56	-0.42	
9,872.0	90.70	180.80	7,037.1	-2,731.0	1,822.6	3,213.5	1.67	1.67	-0.10	
9,968.0	90.20	180.20	7,036.3	-2,827.0	1,821.7	3,302.3	0.81	-0.52	-0.63	
10,064.0	90.70	179.40	7,035.6	-2,923.0	1,822.1	3,391.5	0.98	0.52	-0.83	
10,160.0	90.90	180.40	7,034.2	-3,019.0	1,822.2	3,480.6	1.06	0.21	1.04	
10,256.0	90.70	180.40	7,032.9	-3,115.0	1,821.6	3,569.5	0.21	-0.21	0.00	
10,351.0	90.20	180.60	7,032.2	-3,210.0	1,820.7	3,657.3	0.57	-0.53	0.21	
10,447.0	89.30	179.70	7,032.6	-3,306.0	1,820.5	3,746.3	1.33	-0.94	-0.94	
10,542.0	91.30	179.90	7,032.1	-3,401.0	1,820.8	3,834.6	2.12	2.11	0.21	
10,638.0	90.40	179.20	7,030.7	-3,497.0	1,821.6	3,923.9	1.19	-0.94	-0.73	
10,734.0	89.80	178.70	7,030.5	-3,593.0	1,823.3	4,013.7	0.81	-0.63	-0.52	
10,829.0	88.60	177.90	7,031.8	-3,687.9	1,826.2	4,102.8	1.52	-1.26	-0.84	
10,924.0	90.10	177.90	7,032.9	-3,782.8	1,829.6	4,192.2	1.58	1.58	0.00	
11,020.0	90.50	179.70	7,032.4	-3,878.8	1,831.6	4,282.0	1.92	0.42	1.88	
11,116.0	92.50	178.80	7,029.9	-3,974.8	1,832.9	4,371.5	2.28	2.08	-0.94	
11,212.0	92.50	179.40	7,025.7	-4,070.7	1,834.4	4,461.1	0.62	0.00	0.63	
11,308.0	91.80	180.10	7,022.1	-4,166.6	1,834.8	4,550.2	1.03	-0.73	0.73	
11,403.0	89.90	180.90	7,020.7	-4,261.6	1,834.0	4,638.1	2.17	-2.00	0.84	
11,499.0	89.10	180.80	7,021.5	-4,357.6	1,832.6	4,726.6	0.84	-0.83	-0.10	
11,613.0	89.90	179.40	7,022.5	-4,471.6	1,832.4	4,832.3	1.41	0.70	-1.23	
11,662.2	89.90	179.40	7,022.6	-4,520.8	1,832.9	4,878.2	0.00	0.00	0.00	
<b>BHL 500'FSL &amp; 447'FEL</b>										
11,663.0	89.90	179.40	7,022.6	-4,521.5	1,832.9	4,878.9	0.00	0.00	0.00	

<b>Company:</b>	PETROLEUM DEVELOPMENT CORP DJ Basin	<b>Local Co-ordinate Reference:</b>	Well Lajco 17U-343
<b>Project:</b>	SEC.17-T4N-R67W	<b>TVD Reference:</b>	WELL @ 4807.0ft (RKB - 13')
<b>Site:</b>	Lajco 4N67W17R Pad Sec.17-T4N-R67W	<b>MD Reference:</b>	WELL @ 4807.0ft (RKB - 13')
<b>Well:</b>	Lajco 17U-343	<b>North Reference:</b>	True
<b>Wellbore:</b>	Wellbore #1	<b>Survey Calculation Method:</b>	Minimum Curvature
<b>Design:</b>	Wellbore #1	<b>Database:</b>	US_EDM

Design Targets									
Target Name	Dip Angle	Dip Dir.	TVD	+N/-S	+E/-W	Northing	Easting	Latitude	Longitude
- hit/miss target	(°)	(°)	(ft)	(ft)	(ft)	(usft)	(usft)		
- Shape									
SHL 295'FNL & 2187'FE - survey hits target center - Point	0.00	0.00	1.0	0.0	0.0	1,359,756.79	3,163,452.78	40.319450	-104.913810
BHL 500'FSL & 447'FEL - survey misses target center by 17.4ft at 11662.2ft MD (7022.6 TVD, -4520.8 N, 1832.9 E) - Point	0.00	0.00	7,020.0	-4,521.0	1,815.7	1,355,248.11	3,165,298.21	40.307040	-104.907300

Survey Annotations				
Measured Depth	Vertical Depth	Local Coordinates		Comment
(ft)	(ft)	+N/-S (ft)	+E/-W (ft)	
7,332.6	6,938.4	-218.0	1,804.9	460'FNL & 382'FEL
7,765.0	7,058.0	-624.8	1,836.6	Deepest TVD Drilled - 7058.04' TVD

Checked By: \_\_\_\_\_ Approved By: \_\_\_\_\_ Date: \_\_\_\_\_