

**CEMENT BOND LOG
GAMMA RAY CCL
V D L**

Company		Noble Energy INC.	
Well		WELD 02	
Field		Wattenberg	
County		Weld	
State		Colorado	
Location:		API # : 05123108970000	
Permanent Datum		GL	
Log Measured From		KB	
Drilling Measured From		KB	
SEC		TWP	
NE SW		RGE	
Elevation		4698	
Other Services		K.B. 4711 D.F. G.L. 4698	
Date		January 9, 2012	
Run Number		One	
Depth Driller			
Depth Logger		6933	
Bottom Logged Interval		6932	
Top Log Interval		4950	
Casing Size		4 1/2"	
Type Fluid		Water	
Max. Recorded Temp.		214 deg F	
Estimated Cement Top		5950	
Time Well Ready		AM	
Time Logger On Bottom		AM	
Unit Number		4367	
Tool Size / ID Number		2.75 Probe 110785	
Location		Platteville, CO	
Recorded By		K. Monaghan	
Witnessed By		B. Murray	
Borehole Record		Tubing Record	
Run Number		Bit	
From		To	
Size		Weight	
From		To	
Casing Record		Size	
Surface String		Wgt/Ft	
Prot. String		Top	
Production String		Bottom	
Liner			

<<< Fold Here >>>

All interpretations are opinions based on inferences from electrical or other measurements and we cannot and do not guarantee the accuracy or correctness of any interpretation, and we shall not, except in the case of gross or willful negligence on our part, be liable or responsible for any loss, costs, damages, or expenses incurred or sustained by anyone resulting from any interpretation made by any of our officers, agents or employees. These interpretations are also subject to our general terms and conditions set out in our current Price Schedule.

Comments

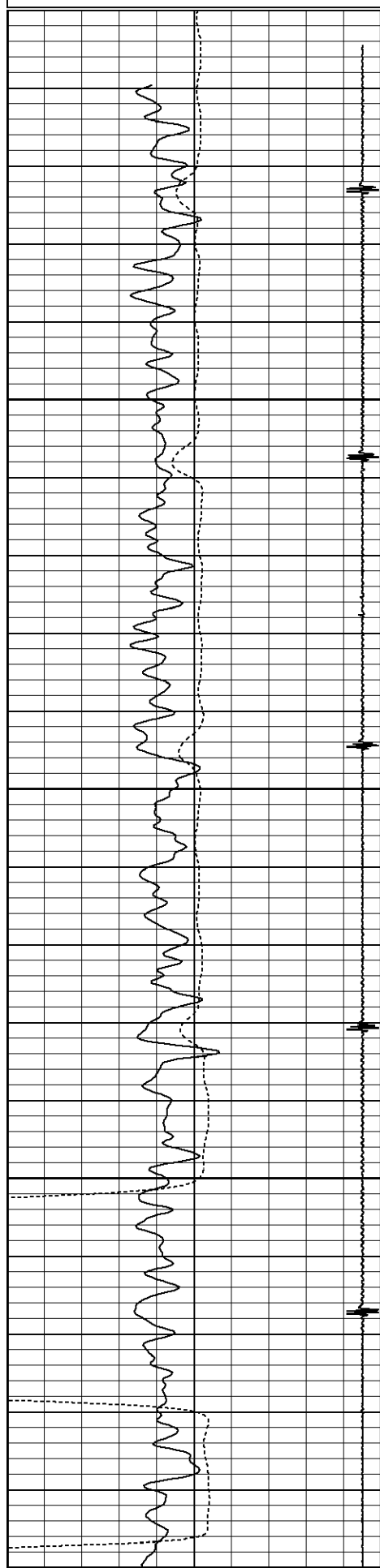
Thank You For Choosing Superior Well Services!!!
API# 05-123-10897-0000
Directions: 48 & 55, E 2/10, N, 2/10, NE Into

Database File: cblweld 02.db
Dataset Pathname: pass3
Presentation Format: noble en
Dataset Creation: Mon Jan 09 07:54:12 2012 by Log SCH 111116
Charted by: Depth in Feet scaled 1:240

80	CCL	-4
0	Gamma Ray (GAPI)	150
340	TT3 (usec)	240

0	Amplified Amplitude (mV)	30
0	Amplitude (mV)	100

Variable Density	1200
------------------	------



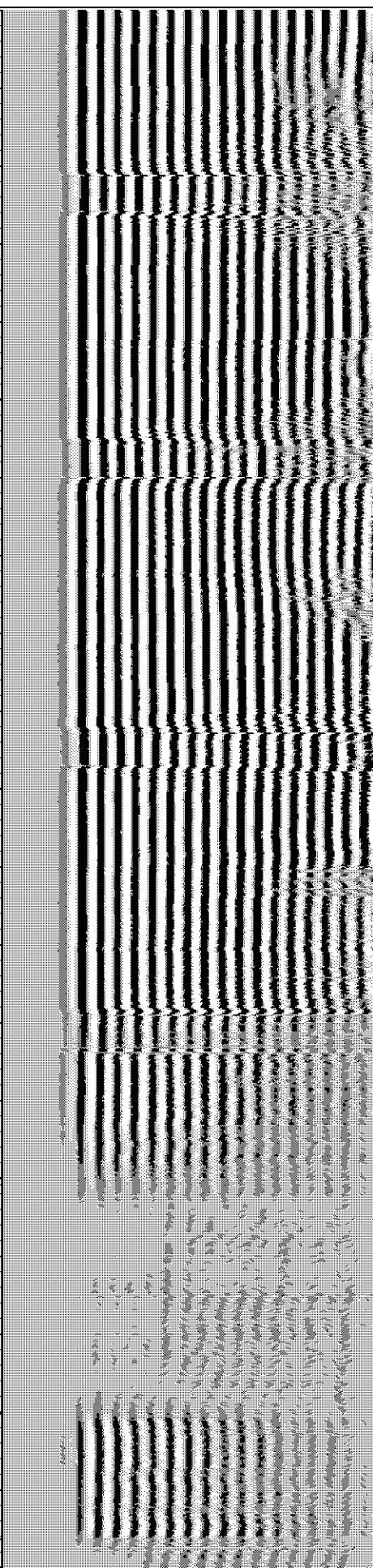
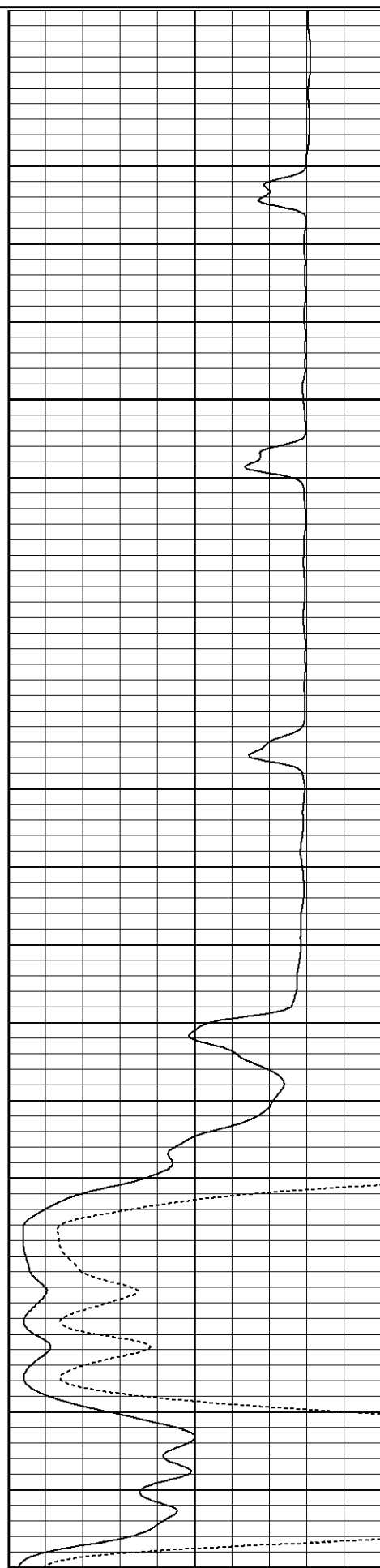
4950

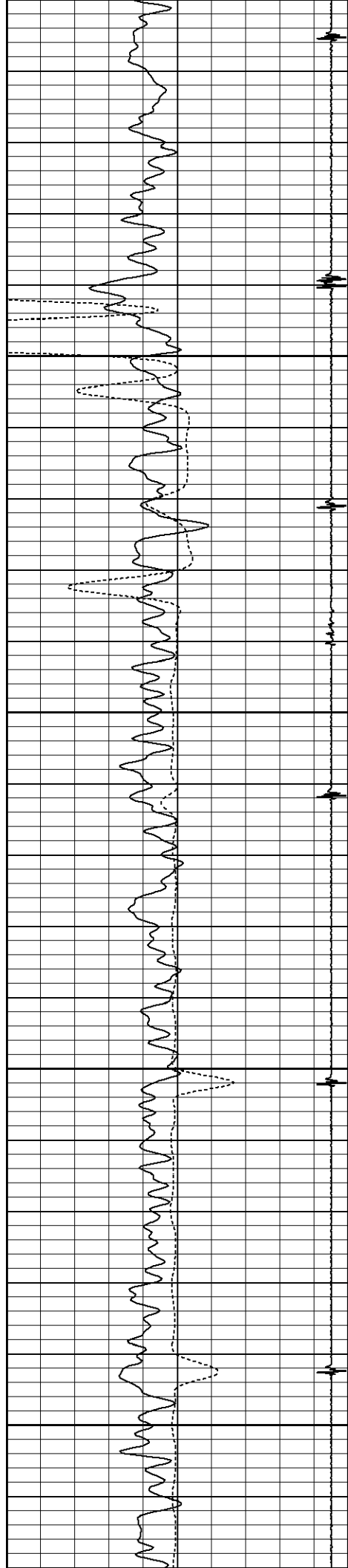
5000

5050

5100

5150





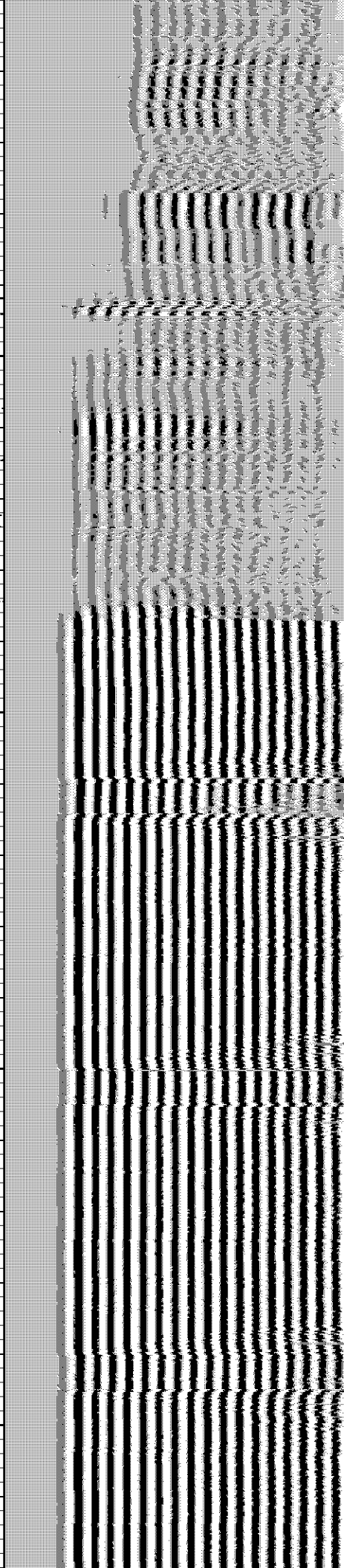
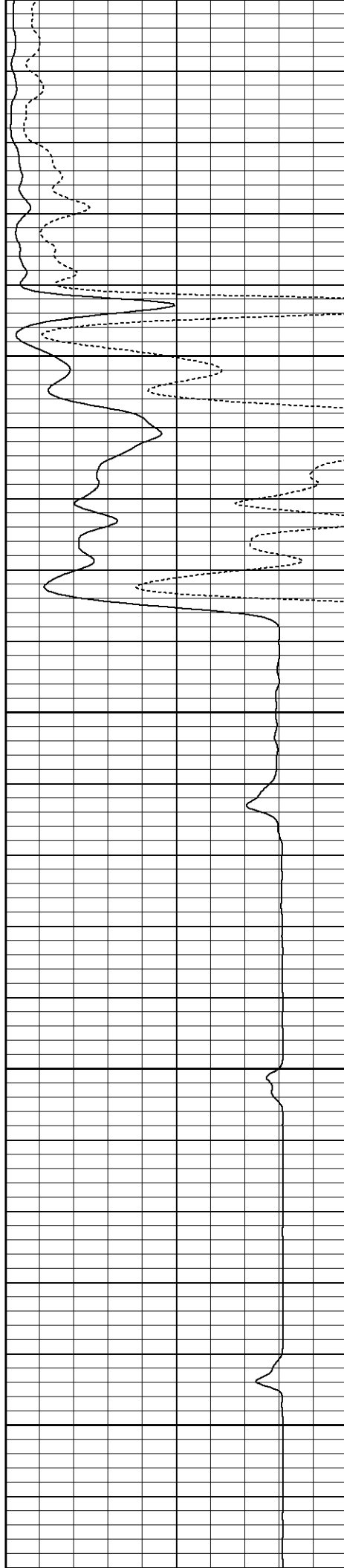
5150

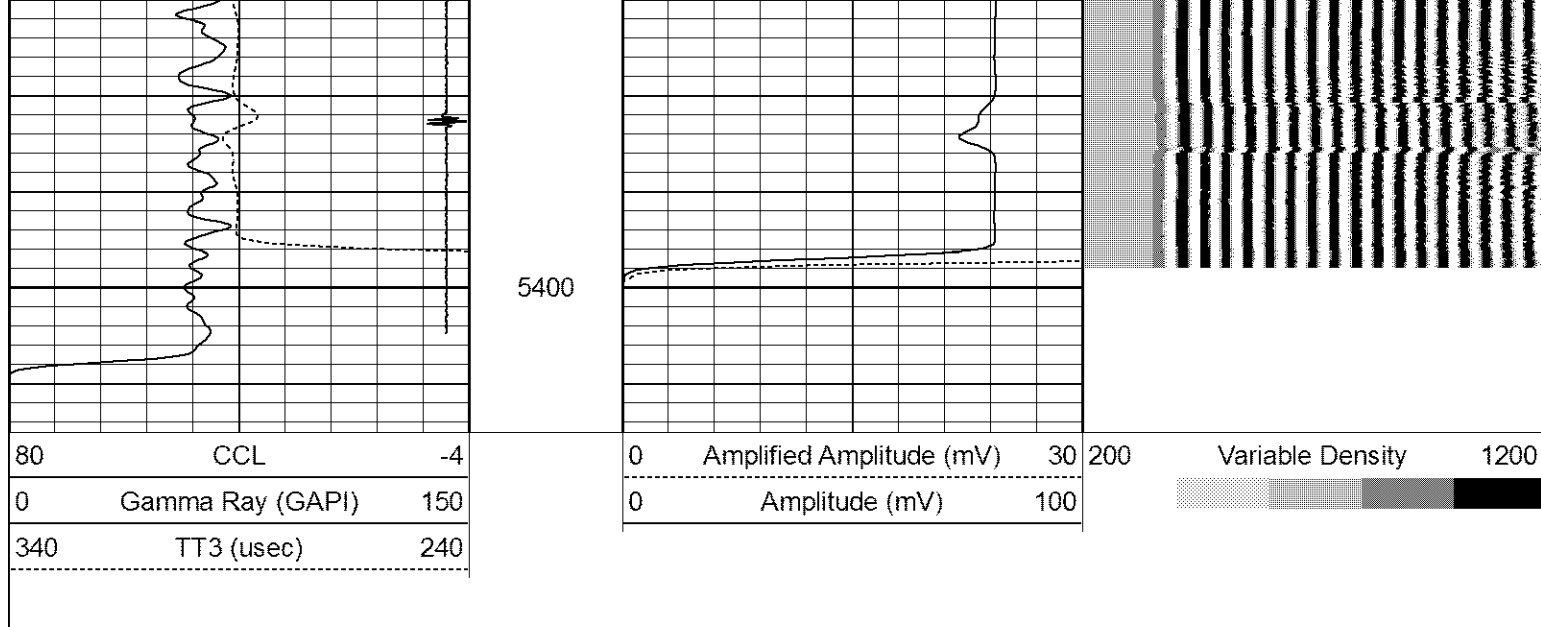
5200

5250

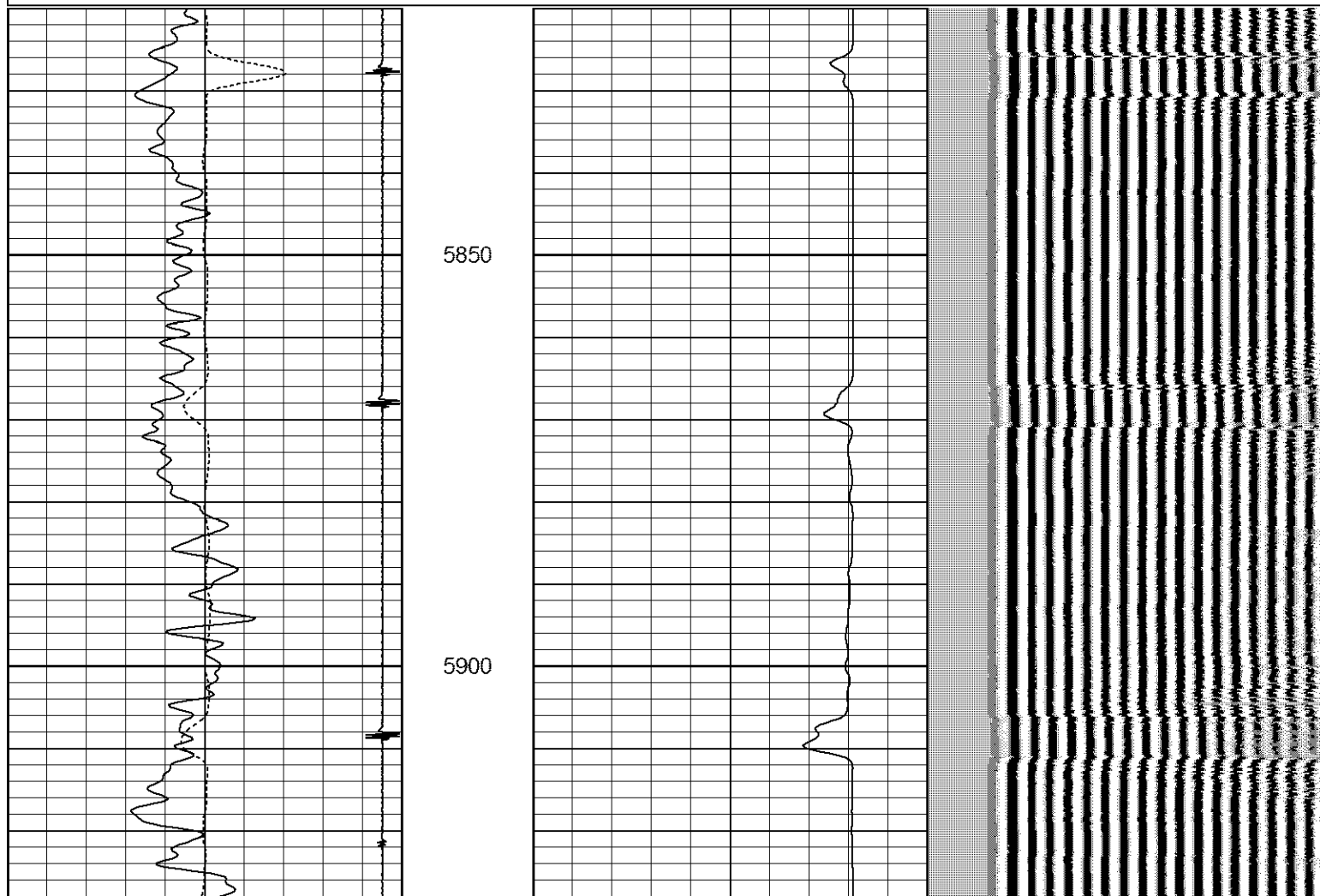
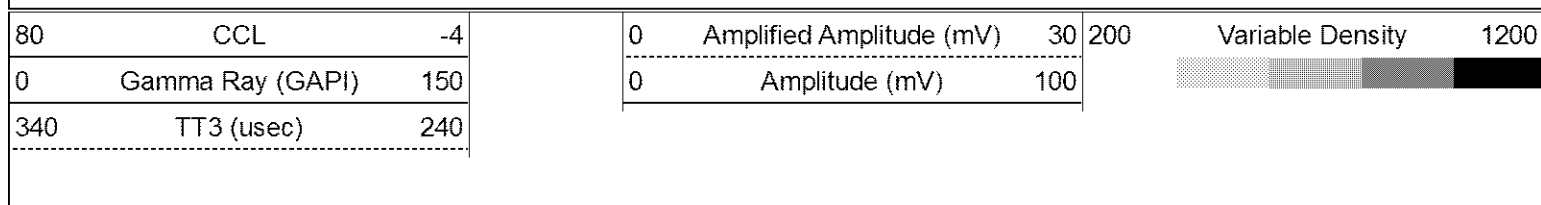
5300

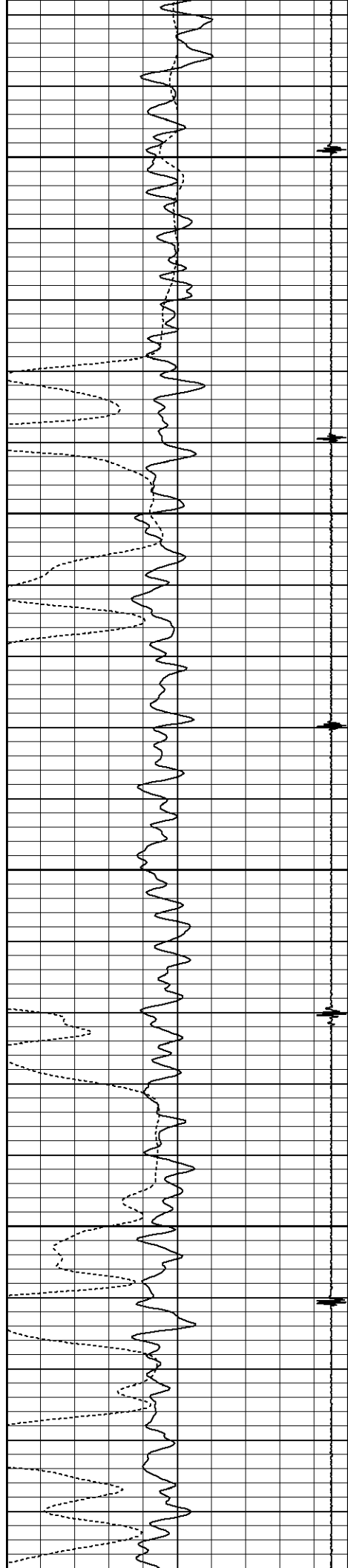
5350





Database File: cblweld 02.db
 Dataset Pathname: pass2
 Presentation Format: noble en
 Dataset Creation: Mon Jan 09 07:39:01 2012 by Log SCH 111116
 Charted by: Depth in Feet scaled 1:240



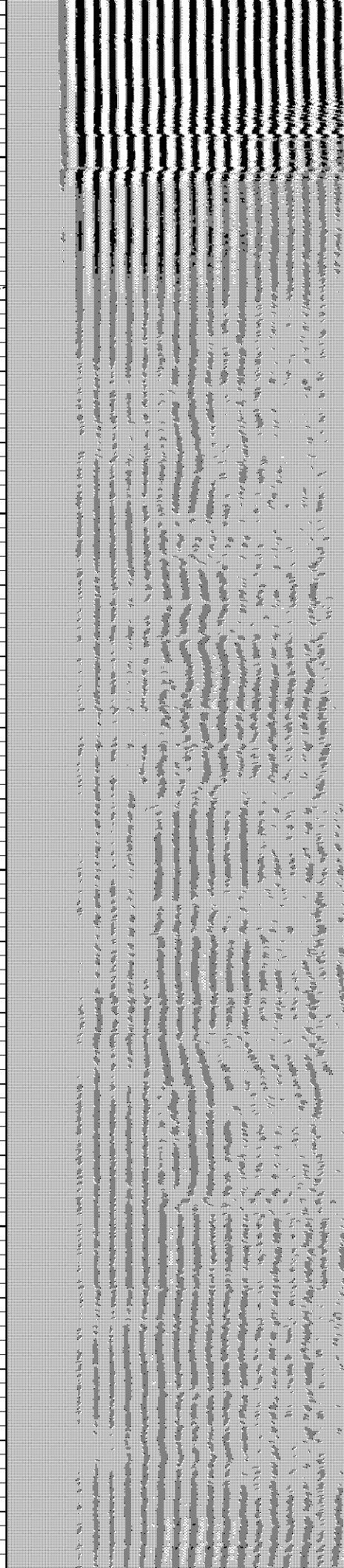
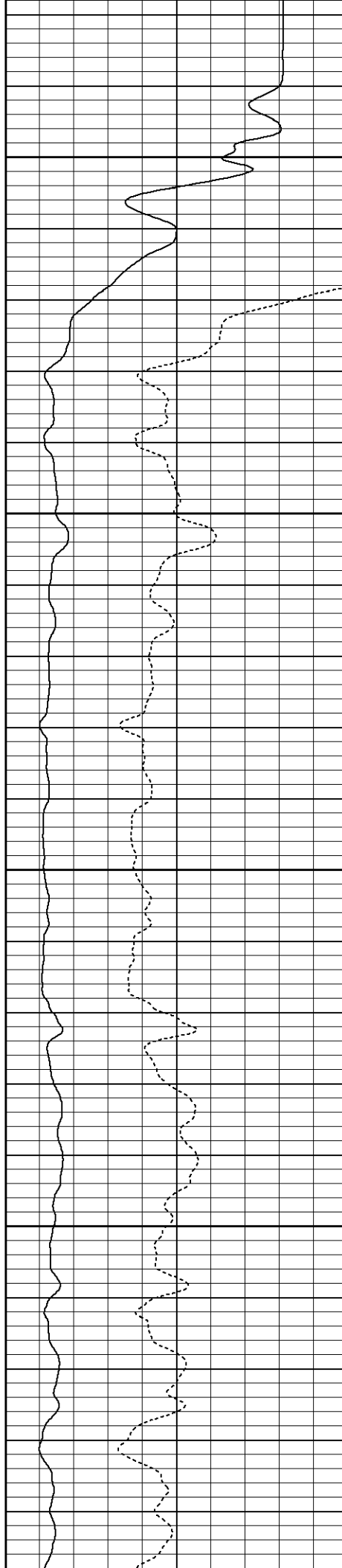


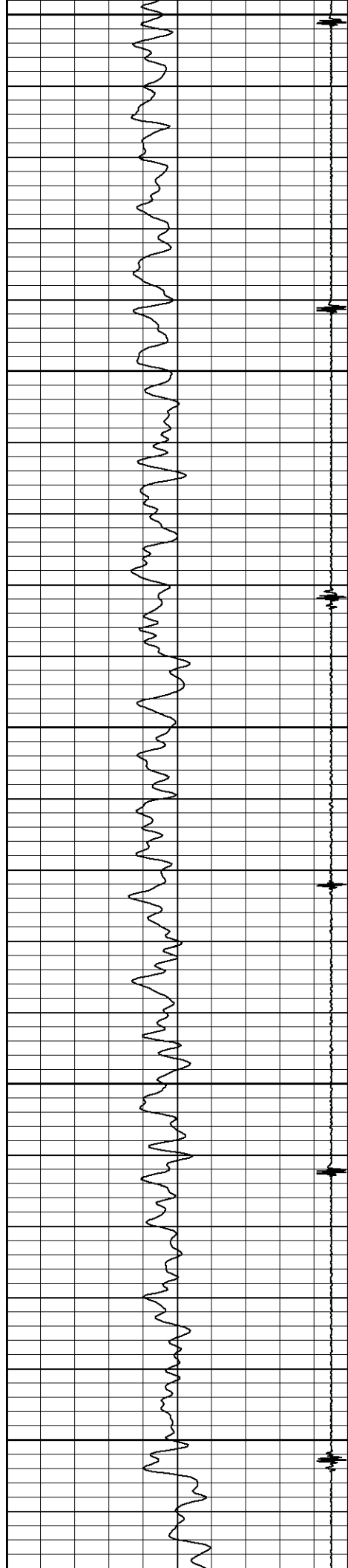
5950

6000

6050

6100





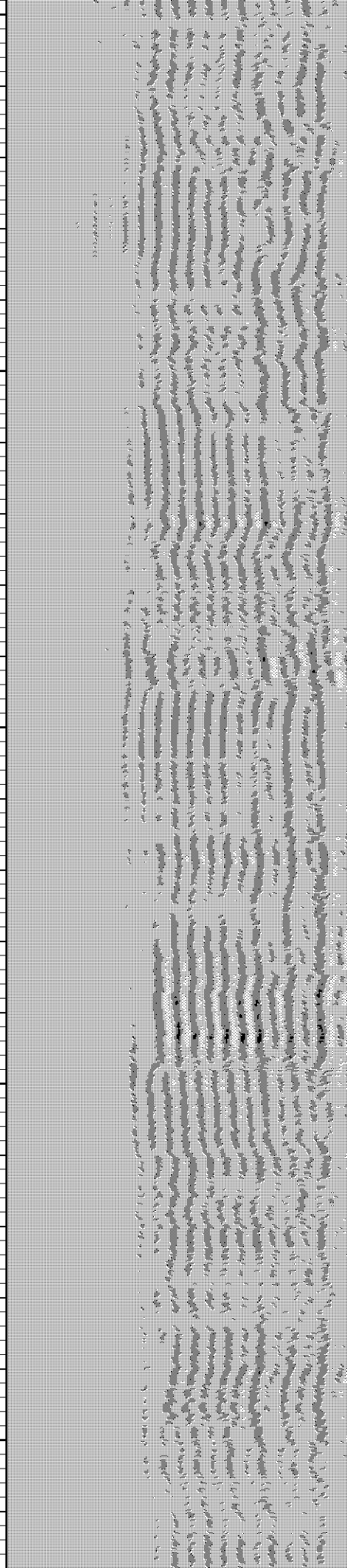
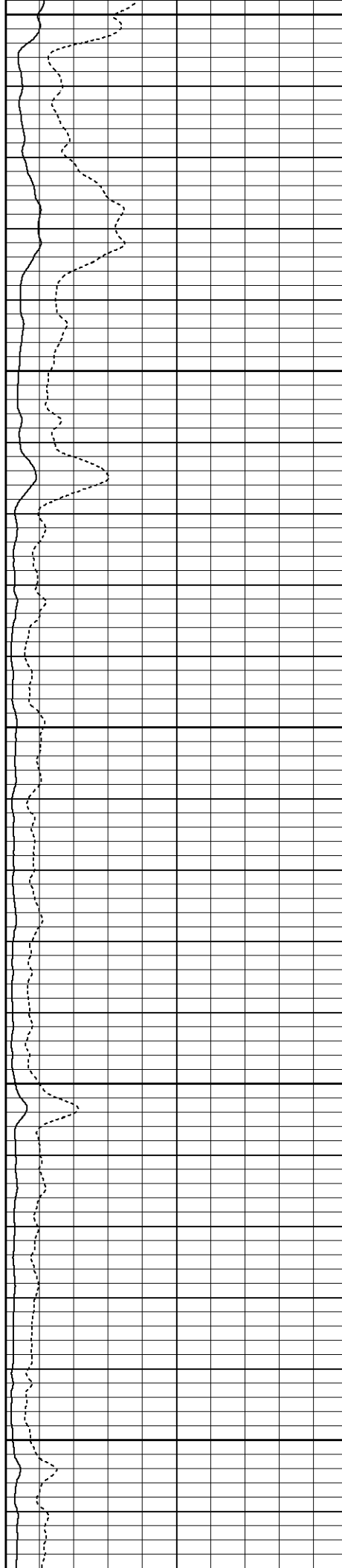
6150

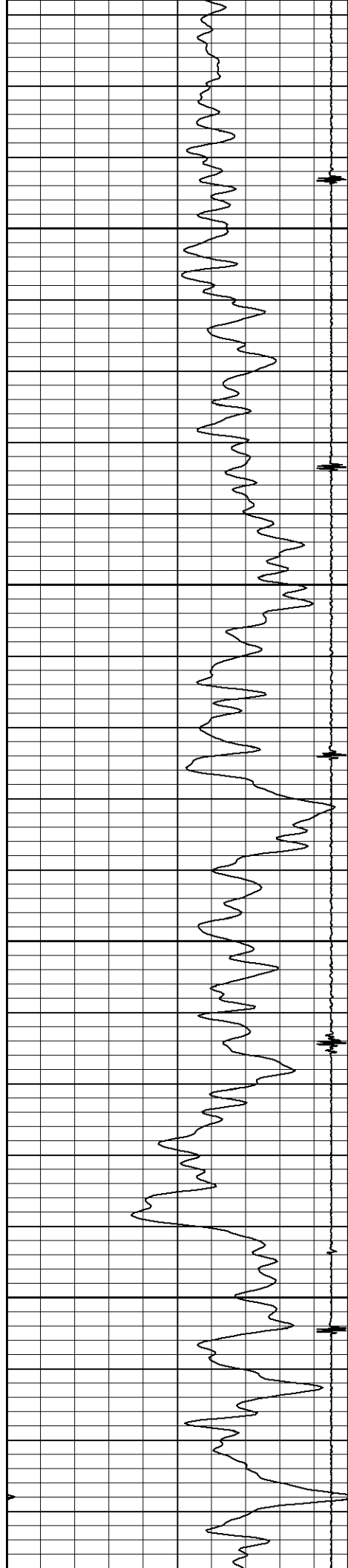
6200

6250

6300

6350



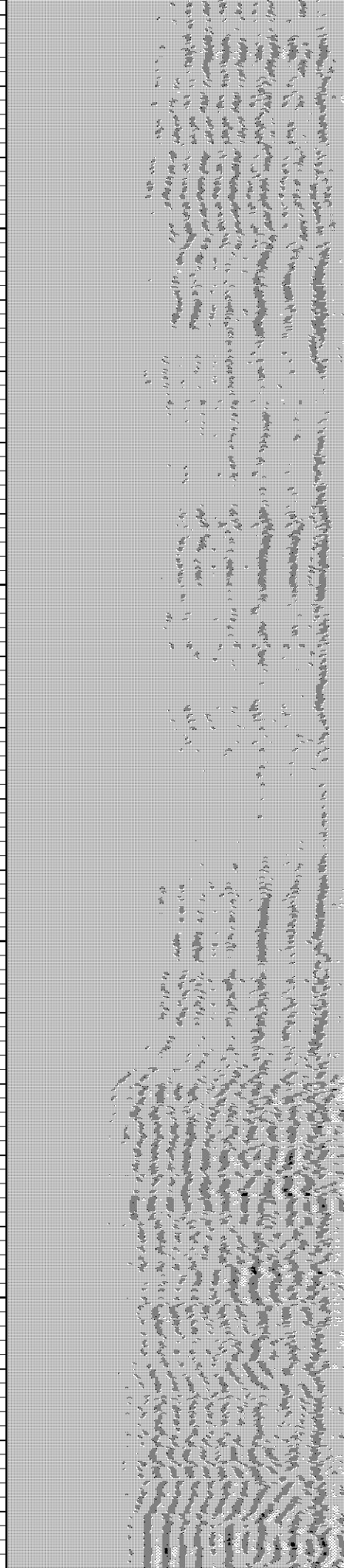
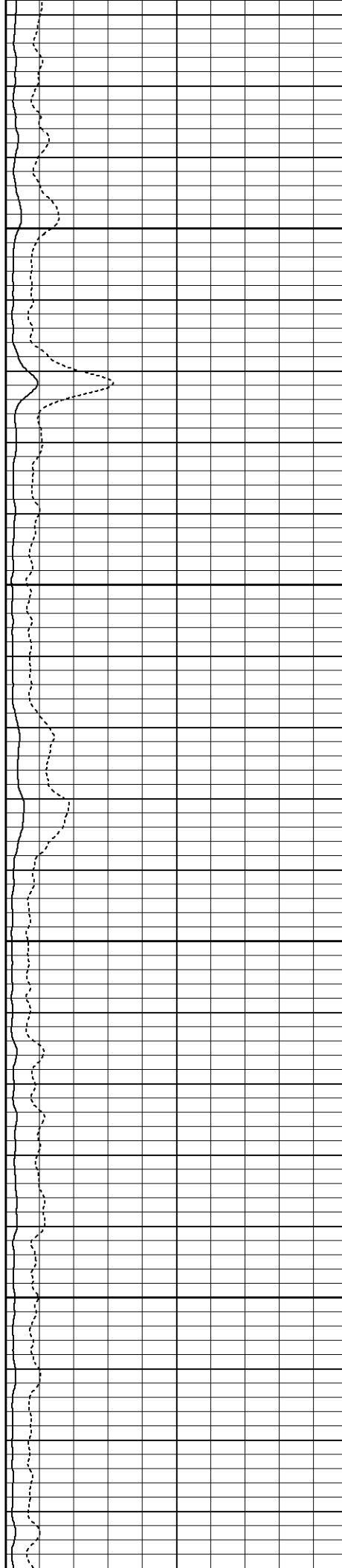


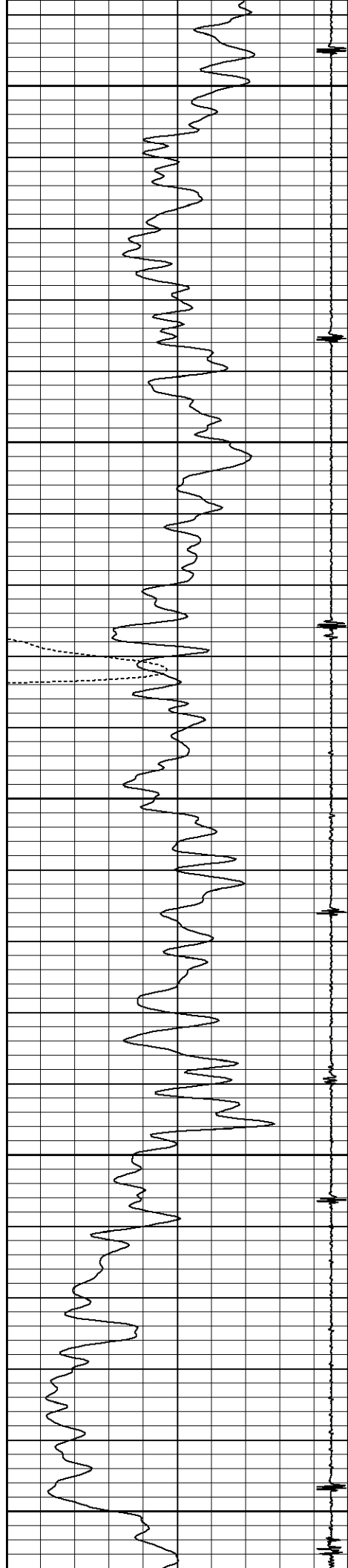
6400

6450

6500

6550





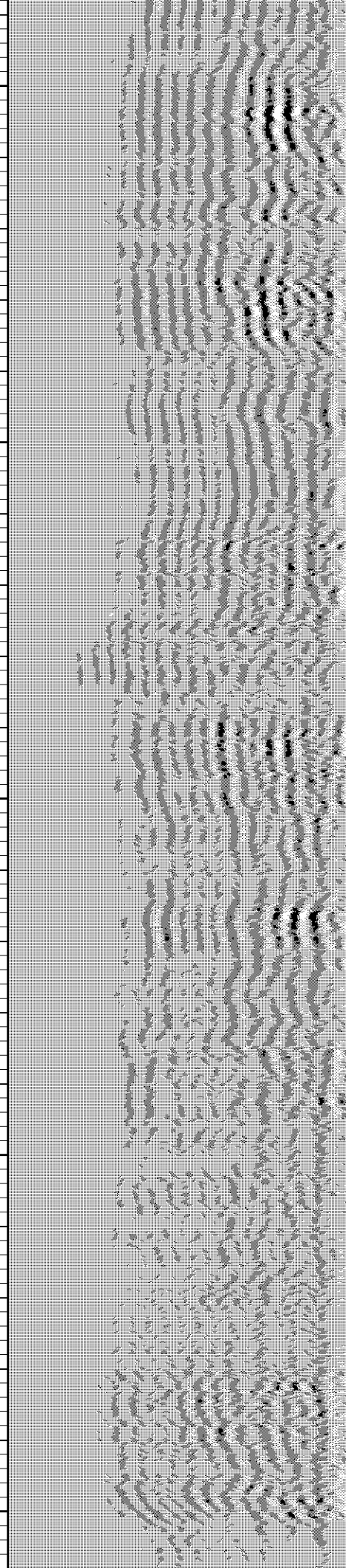
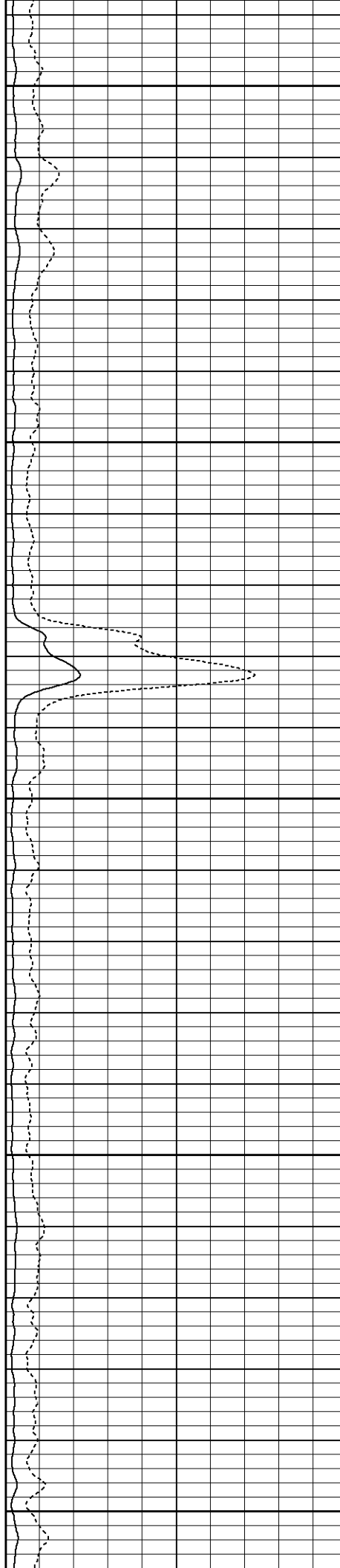
6600

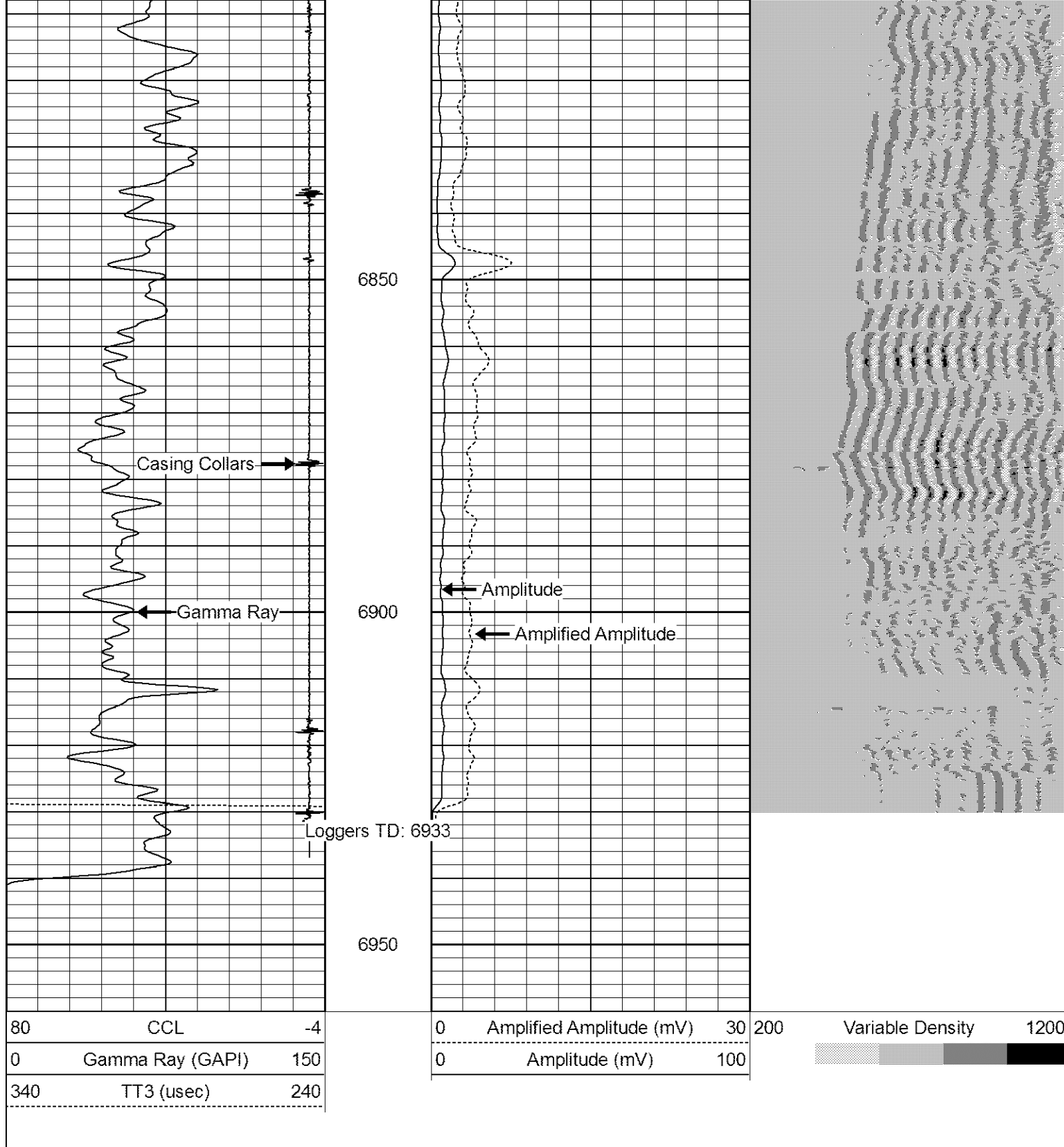
6650

6700

6750

6800





Calibration Report

Database File: cblweld 02.db
Dataset Pathname: pass3
Dataset Creation: Mon Jan 09 07:54:12 2012 by Log SCH 111116

Gamma Ray Calibration Report

Type / Serial: Probe275dig / 110785

SHOP CALIBRATION

Fri Jan 06 06:50:20 2012

	Counts/Sec.	Gain	Offset	Jig	Units
Background	0.0				cpm

Background	0.0		cps
Calibrator	1.0	0.5800	cps
			GAPI/cps

PRIMARY VERIFICATION

Background	0.0		cps
Calibrator	0.0		cps
Difference		0.0	GAPI

BEFORE SURVEY VERIFICATION

Background	0.0		cps
Calibrator	0.0		cps
Difference		0.0	GAPI

AFTER SURVEY VERIFICATION

Background	0.0		cps
Calibrator	0.0		cps
Difference		0.0	GAPI

Cement Bond Log Calibration Report

Serial Number:	110803		
Tool Model:	Probe275Digital		
Performed:	Fri Jan 06 06:34:06 2012		
Depth:	890.308	ft	
Casing Diameter:	4.5	in	
	3' Spacing	5' Spacing	
Signal Zero:	0.9	0	mV
Calibrated Amplitude:	81.1961	81.1961	mV
Reading at Signal Zero:	0.0133057	0.0133301	V
Reading in Free Pipe:	2.49756	2.36145	V
Gain:	32.322	34.5792	
Offset:	0.469934	-0.460943	