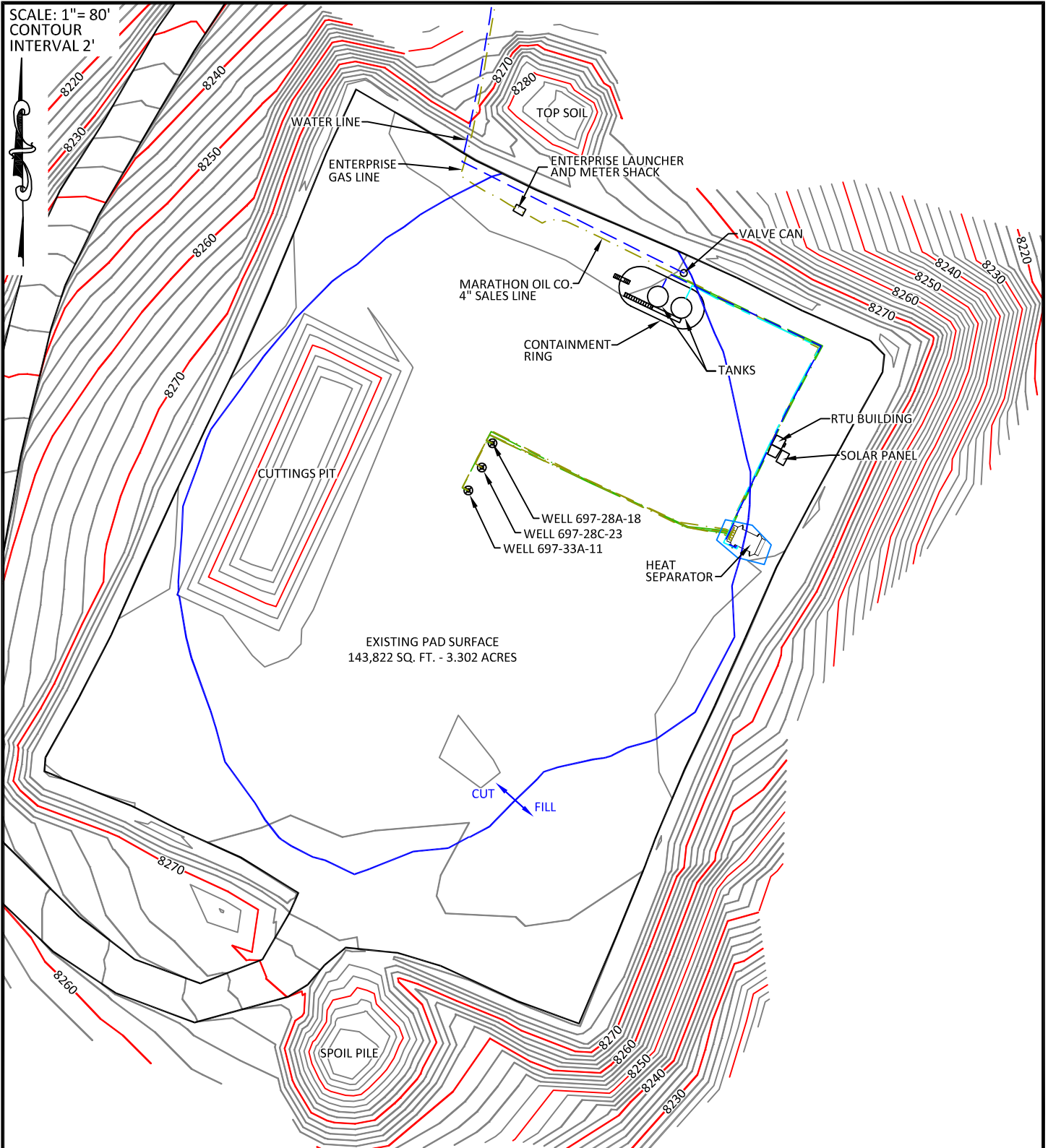


PAD 697-28C

SCALE: 1"= 80'
CONTOUR
INTERVAL 2'



CONFIDENTIALITY NOTES:

The information contained in this plat is legally privileged and confidential information intended only for the use of the recipients. If you are not the intended recipients, you are hereby notified that any use, dissemination, distribution or copying of this information is strictly prohibited.



**WILLIAM H. SMITH
& ASSOCIATES P.C.**

SURVEYING CONSULTANTS
550 EAST SECOND NORTH PHONE: 307-875-3638
GREEN RIVER, WY 307-875-3639
www.whsmithpc.com

DRAWN BY: JSJ

CHECKED BY: WHD

PROJECT NO: N/A

JOB NO: 26099

REVISIONS:

LEGEND

- GAS LINES
- WATER LINES
- CONDENSATE LINES
- GLYCOL LINES
- ELECTRIC LINES

LOCATION:

PAD 697-28C
WITHIN THE NE/4
SW/4, SECTION 28,
T6S, R97W, 6TH
PM.
GARFIELD COUNTY,
COLORADO

MARATHON OIL COMPANY
PO BOX 3128, HOUSTON TX, 77253
5555 SAN FELIPE, HOUSTON TX, 77056

AS-BUILT PAD

SCALE: 1"=80'

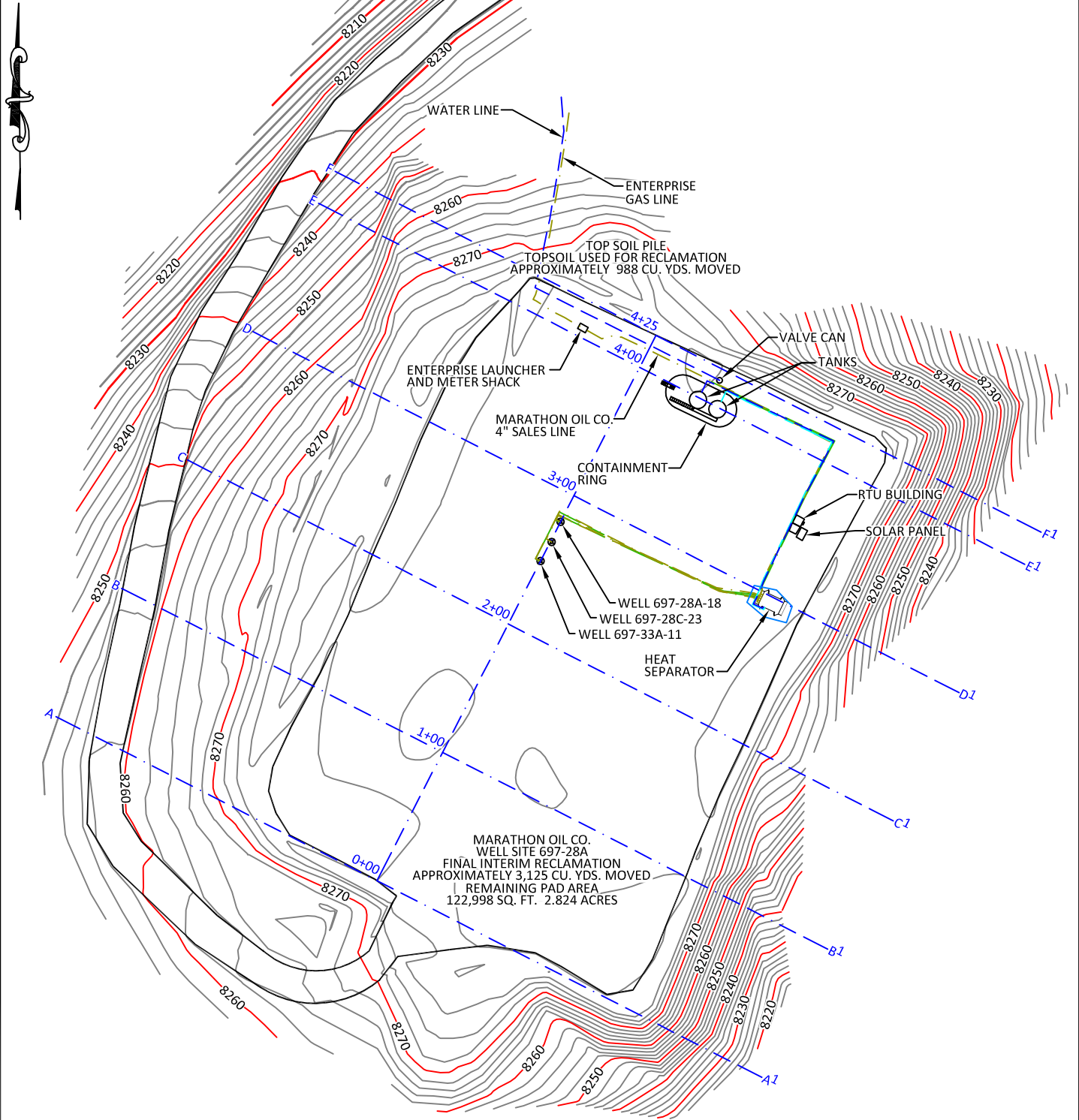
DATE: 10/17/2011

EXHIBIT "A"

SHEET 1 OF 3

PAD 697-28C

SCALE: 1"= 100'
CONTOUR
INTERVAL 2'



CONFIDENTIALITY NOTES:

The information contained in this plat is legally privileged and confidential information intended only for the use of the recipients. If you are not the intended recipients, you are hereby notified that any use, dissemination, distribution or copying of this information is strictly prohibited.



**WILLIAM H. SMITH
& ASSOCIATES P.C.**

SURVEYING CONSULTANTS

550 EAST SECOND NORTH PHONE: 307-875-3638
GREEN RIVER, WY 307-875-3639
www.whsmithpc.com

DRAWN BY: JSJ

CHECKED BY: WHD

PROJECT NO: N/A

JOB NO: 26099

REVISIONS:

DATA

FINAL INTERIM RECLAMATION
APPROXIMATELY 3,125 CU. YDS. MOVED

TOPSOIL USED FOR RECLAMATION
APPROXIMATELY 988 CU. YDS. MOVED

REMAINING PAD AREA
122,998 SQ. FT. 2.824 ACRES

LOCATION:

PAD 697-28C
WITHIN THE NE/4
SW/4, SECTION 28,
T6S, R97W, 6TH
PM.
GARFIELD COUNTY,
COLORADO

MARATHON OIL COMPANY
PO BOX 3128, HOUSTON TX, 77253
5555 SAN FELIPE, HOUSTON TX, 77056

INTERIM RECLAMATION ASBUILT

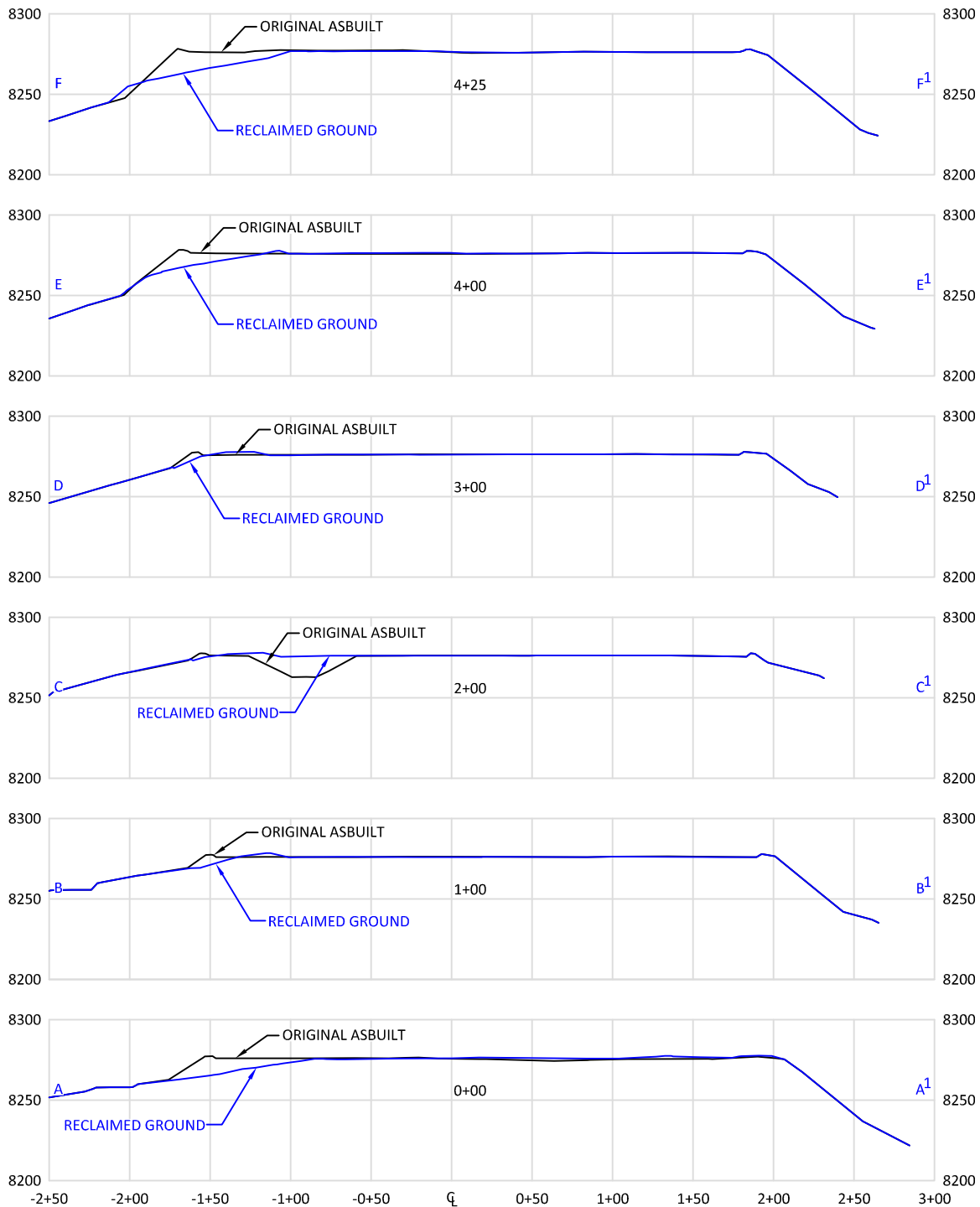
SCALE: 1"=100'

DATE: 10/17/2011

EXHIBIT "A"

SHEET 2 OF 3

PAD 697-28C



CONFIDENTIALITY NOTES:

The information contained in this plat is legally privileged and confidential information intended only for the use of the recipients. If you are not the intended recipients, you are hereby notified that any use, dissemination, distribution or copying of this information is strictly prohibited.



**WILLIAM H. SMITH
& ASSOCIATES P.C.**

SURVEYING CONSULTANTS
550 EAST SECOND NORTH PHONE: 307-875-3638
GREEN RIVER, WY 307-875-3639
www.whsmithpc.com

DRAWN BY: JSJ

CHECKED BY: WHD

PROJECT NO: N/A

JOB NO: 26099

REVISIONS:

LEGEND

— ORIGINAL ASBUILT
— RECLAIMED GROUND

LOCATION:

PAD 697-28C
WITHIN THE NE/4
SW/4, SECTION 28,
T6S, R97W, 6TH
PM.
GARFIELD COUNTY,
COLORADO

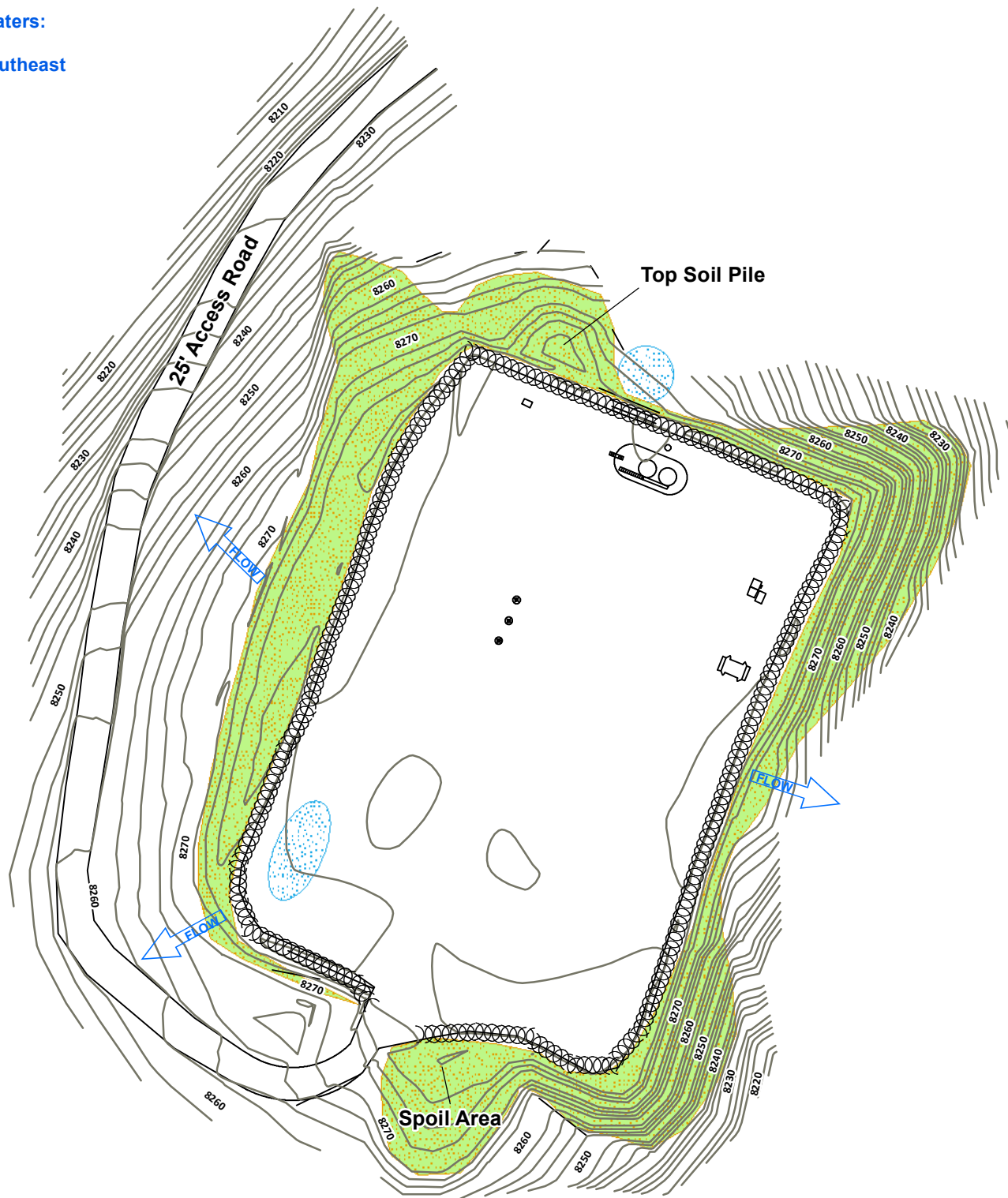
MARATHON OIL COMPANY
PO BOX 3128, HOUSTON TX, 77253
5555 SAN FELIPE, HOUSTON TX, 77056

**INTERIM RECLAMATION ASBUILT
CROSS SECTIONS**

SCALE: 1"=100'H/100'V
DATE: 10/17/2011

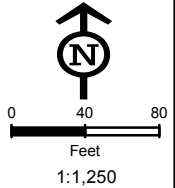
EXHIBIT "A"
SHEET 3 OF 3

Receiving Waters:
Conn Creek
4400 Feet Southeast



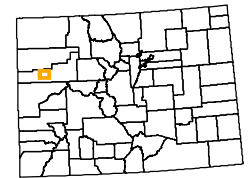
Legend

- Culvert
- Sediment Trap
- Cattle Pond
- Water Bar
- Rip Rap
- Bales
- V-Ditch W/Check Dam
- Diversion Ditch
- Site Berm
- Toe Berm
- Fiber Roll
- Silt Fence
- Area To Be Reclaimed
- Fence
- Blanket
- Cut
- Fill
- Seeded & Hydromulched
- Soil Roughening
- Snow Storage



Not Present
Asphalt Or Concrete Batch Plants

Project Location



Garfield County

Map Index Overview



Pad Site
697-28C

Total Disturbed Area = 2.82 Acres

MARATHON OIL

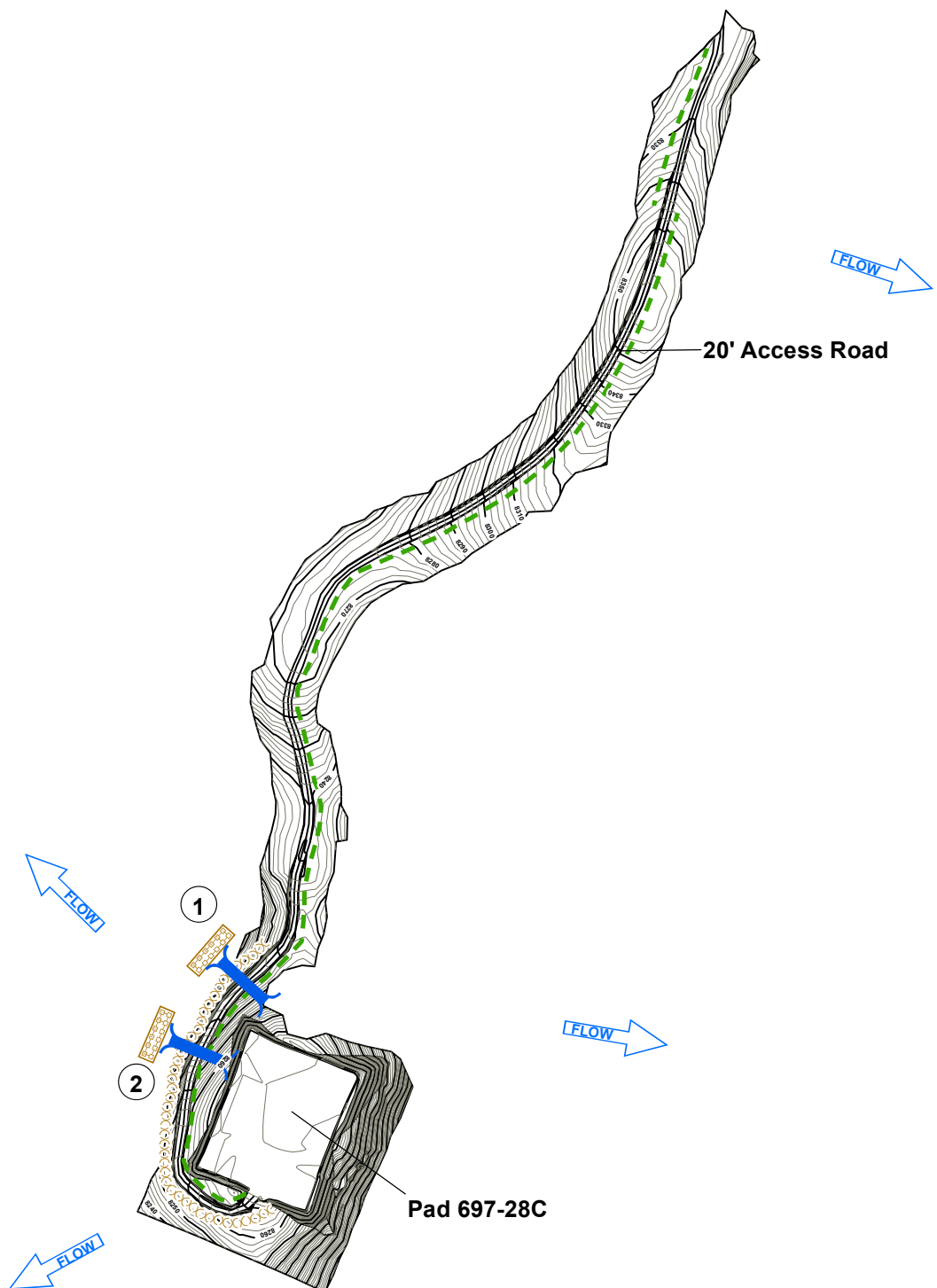
REVISED	BY:	COMMENT:
3/28/2012	BJB	MAP CREATION
5/8/2012	BJB	BMP REVISION
8/27/2012	BJB	BMP REVISION
11/12/2013	BJB	BMP REVISION



InterTech

InterTech E&E, LLC
bbergstrom@cbmainc.com
M:\Projects\Marathon\Piceance\Projects\SWMP\2013\697_28C\SWMP_697_28C_20131112.mxd

Receiving Waters:
Conn Creek
350 Feet Northwest
East Fork Baker Creek
400 Feet Northeast



Legend

Culvert

Sediment Trap

Cattle Pond

WB Water Bar

Rip Rap

Bales

V-Ditch W/Check Dam

Diversion Ditch

Site Berm

Toe Berm

Fiber Roll

Silt Fence

Area To Be Reclaimed

Fence

Blanket

Cut

Fill

Seeded & Hydromulched

Soil Roughening

Snow Storage

0 190 380
Feet
1:6,000

Not Present
Asphalt Or Concrete Batch Plants

Project Location

Garfield County

Map Index Overview

Access Road To Pad 697-28C

Approximate Road Length = 2080 LF

MARATHON OIL		
REVISED	BY:	COMMENT:
3/28/2012	BJB	TEMPLATE CREATION
3/28/2012	BJB	MAP CREATION

InterTech E&E, LLC
bbergstrom@cbmainc.com
M:\Projects\Marathon\Piceance\Projects\SWMP\2012\697_28C\SWMP_697_28C_Road_20120328.mxd