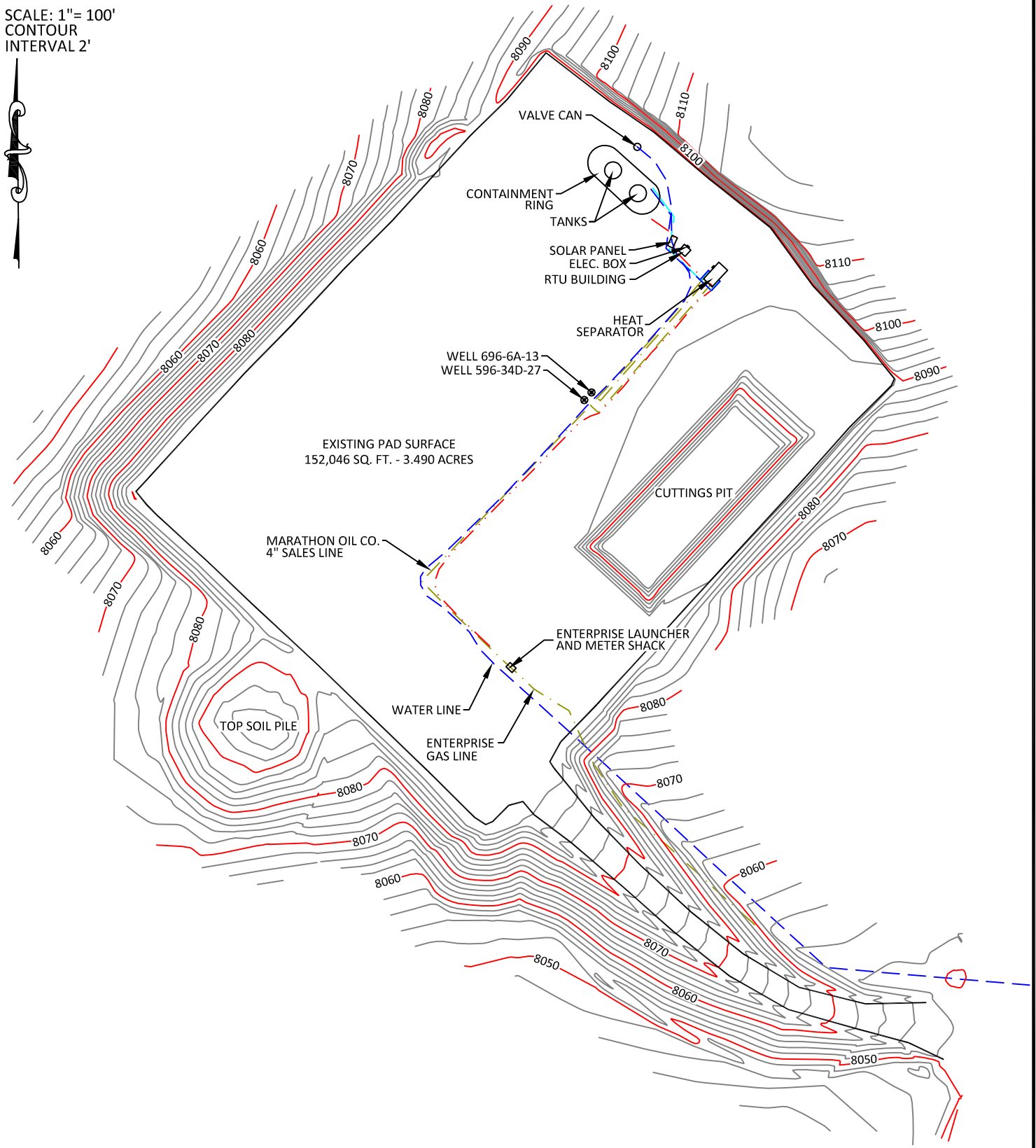


PAD 596-34D

SCALE: 1"= 100'
CONTOUR
INTERVAL 2'



CONFIDENTIALITY NOTES:

The information contained in this plat is legally privileged and confidential information intended only for the use of the recipients. If you are not the intended recipients, you are hereby notified that any use, dissemination, distribution or copying of this information is strictly prohibited.



**WILLIAM H. SMITH
& ASSOCIATES P.C.**

SURVEYING CONSULTANTS
550 EAST SECOND NORTH PHONE: 307-875-3638
GREEN RIVER, WY 307-875-3639
www.whsmithpc.com

DRAWN BY: JSJ

CHECKED BY: WHD

JOB NO: 26099

JOB NO: N/A

REVISIONS:

LEGEND

- GAS LINES
- WATER LINES
- CONDENSATE LINES
- GLYCOL LINES
- ELECTRIC LINES

LOCATION:
WITHIN THE SE/4
SECTION 34,
T 5 S, R 96 W, 6TH
PM.
GARFIELD
COUNTY,
COLORADO

MARATHON OIL COMPANY
PO BOX 3128, HOUSTON TX, 77253
5555 SAN FELIPE, HOUSTON TX, 77056

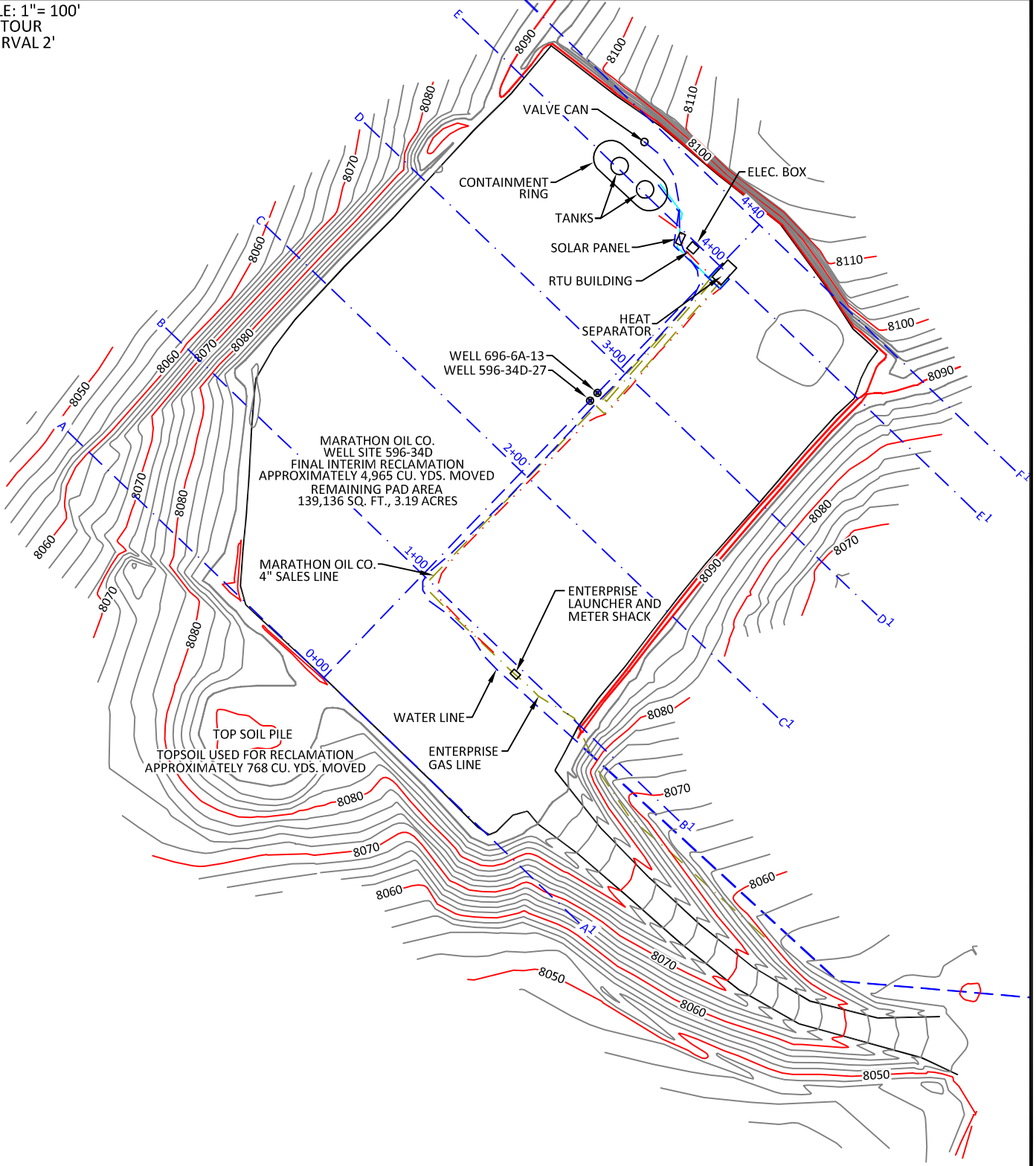
AS-BUILT PAD

SCALE: 1"=100'
DATE: 09/12/2011

EXHIBIT "A"
SHEET 1 OF 3

PAD 596-34D

SCALE: 1" = 100'
CONTOUR
INTERVAL 2'



CONFIDENTIALITY NOTES:

The information contained in this plat is legally privileged and confidential information intended only for the use of the recipients. If you are not the intended recipients, you are hereby notified that any use, dissemination, distribution or copying of this information is strictly prohibited.



**WILLIAM H. SMITH
& ASSOCIATES P.C.**

SURVEYING CONSULTANTS

550 EAST SECOND NORTH PHONE: 307-875-3638
GREEN RIVER, WY 307-875-3639
www.whsmithpc.com

DRAWN BY: JSJ

CHECKED BY: WHD

JOB NO: 26099

JOB NO: N/A

REVISIONS:

DATA

FINAL INTERIM RECLAMATION
APPROXIMATELY 4,965 CU. YDS. MOVED

TOPSOIL USED FOR RECLAMATION
APPROXIMATELY 768 CU. YDS. MOVED

REMAINING PAD AREA
139,136 SQ. FT., 3.19 ACRES

LOCATION:
WITHIN THE SE/4
SECTION 34,
T 5 S, R 96 W,
6TH PM.
GARFIELD COUNTY,
COLORADO

MARATHON OIL COMPANY
PO BOX 3128, HOUSTON TX, 77253
5555 SAN FELIPE, HOUSTON TX, 77056

INTERIM RECLAMATION ASBUILT

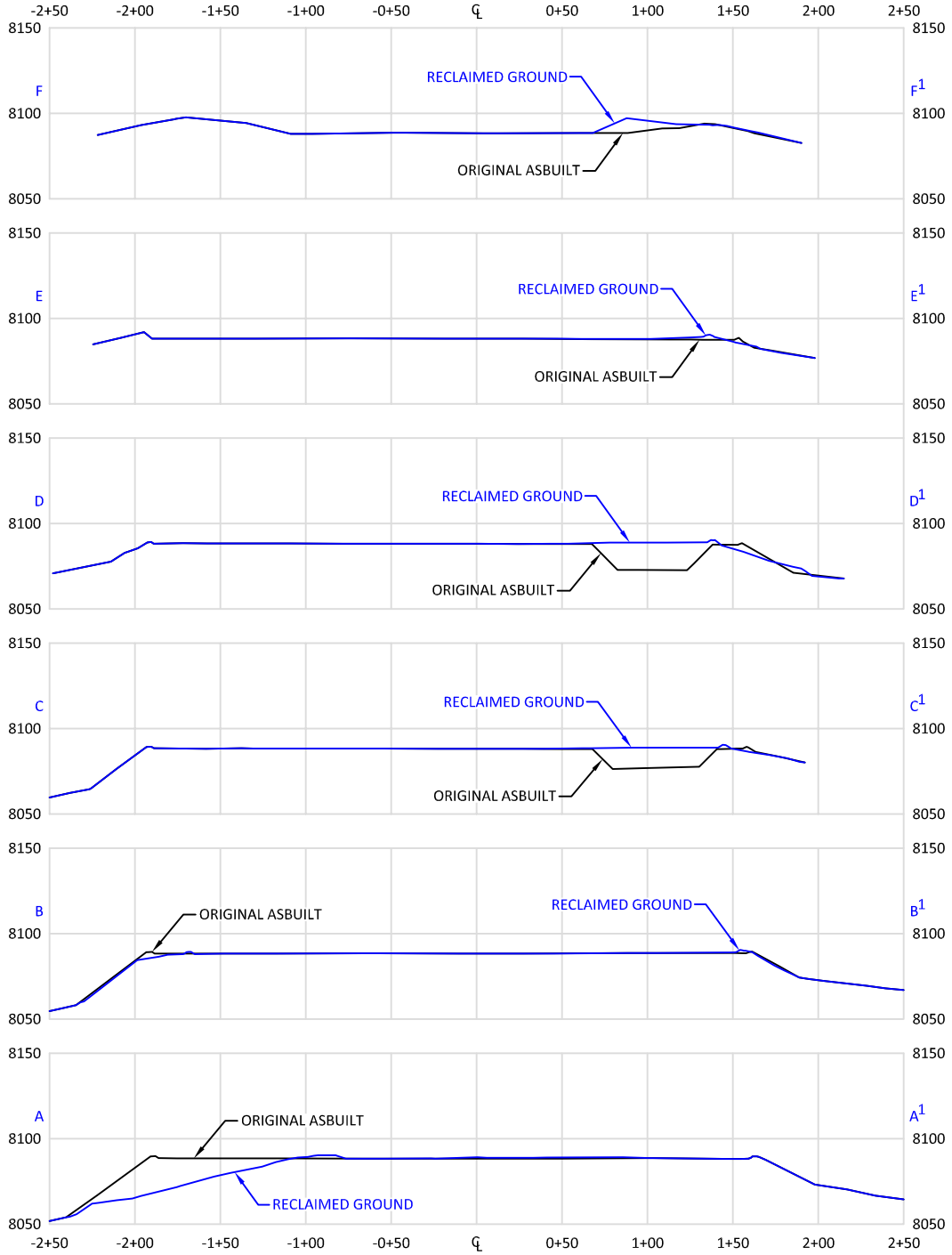
SCALE: 1"=100'

EXHIBIT "B"


DATE: 09/12/2011

SHEET 2 OF 3

PAD 596-34D



CONFIDENTIALITY NOTES:
 THE INFORMATION CONTAINED IN THIS PLOT IS LEGALLY PRIVILEGED AND CONFIDENTIAL INFORMATION INTENDED ONLY FOR THE USE OF THE RECIPIENTS. IF YOU ARE NOT THE INTENDED RECIPIENTS, YOU ARE HEREBY NOTIFIED THAT ANY USE, DISSEMINATION, DISTRIBUTION OR COPYING OF THIS INFORMATION IS STRICTLY PROHIBITED.



**WILLIAM H. SMITH
& ASSOCIATES P.C.**
SURVEYING CONSULTANTS
 550 EAST SECOND NORTH PHONE: 307-875-3638
 GREEN RIVER, WY 307-875-3639
www.whsmithpc.com

DRAWN BY: JSJ	CHECKED BY: WHD
JOB NO: 26099	PROJECT NO: N/A
REVISIONS:	

LEGEND	
	ORIGINAL ASBUILT
	RECLAIMED GROUND

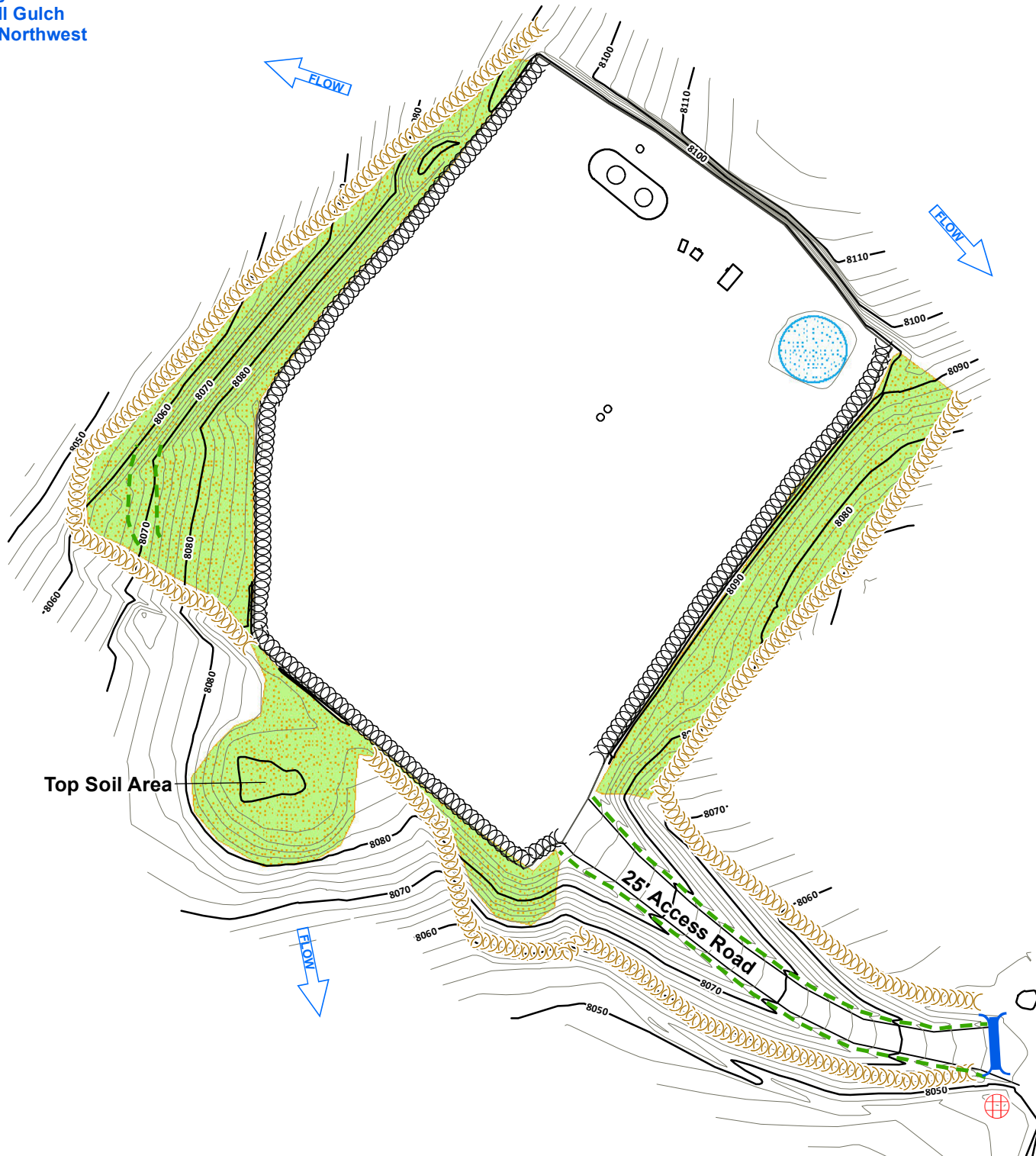
LOCATION:
 WITHIN THE SE/4
 SECTION 34,
 T 5 S, R 96 W,
 6TH PM.
 GARFIELD COUNTY,
 COLORADO

MARATHON OIL COMPANY
 P.O. BOX 3128
 HOUSTON, TX 77253
 5555 SAN FELIPE
 HOUSTON, TX 77056

**INTERIM RECLAMATION ASBUILT
 CROSS SECTIONS**

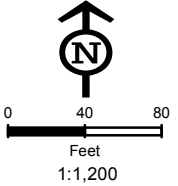
SCALE: 1"=100'H/100'V	EXHIBIT "C"
DATE: 09/12/2011	SHEET 3 OF 3

Receiving Waters:
Sheep Kill Gulch
800 Feet Northwest



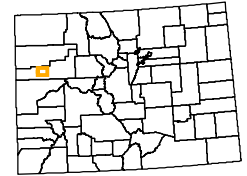
Legend

- Culvert
- Sediment Trap
- Cattle Pond
- Water Bar
- Rip Rap
- Bales
- V-Ditch W/Check Dam
- Diversion Ditch
- Site Berm
- Toe Berm
- Fiber Roll
- Silt Fence
- Area To Be Reclaimed
- Fence
- Blanket
- Cut
- Fill
- Seeded & Hydromulched
- Soil Roughening
- Snow Storage
- Rip Rap (Large Area)



Not Present
Asphalt Or Concrete Batch Plants

Project Location



Garfield County

Map Index Overview



Pad Site 596-34D

Total Disturbed Area = 3.19 Acres

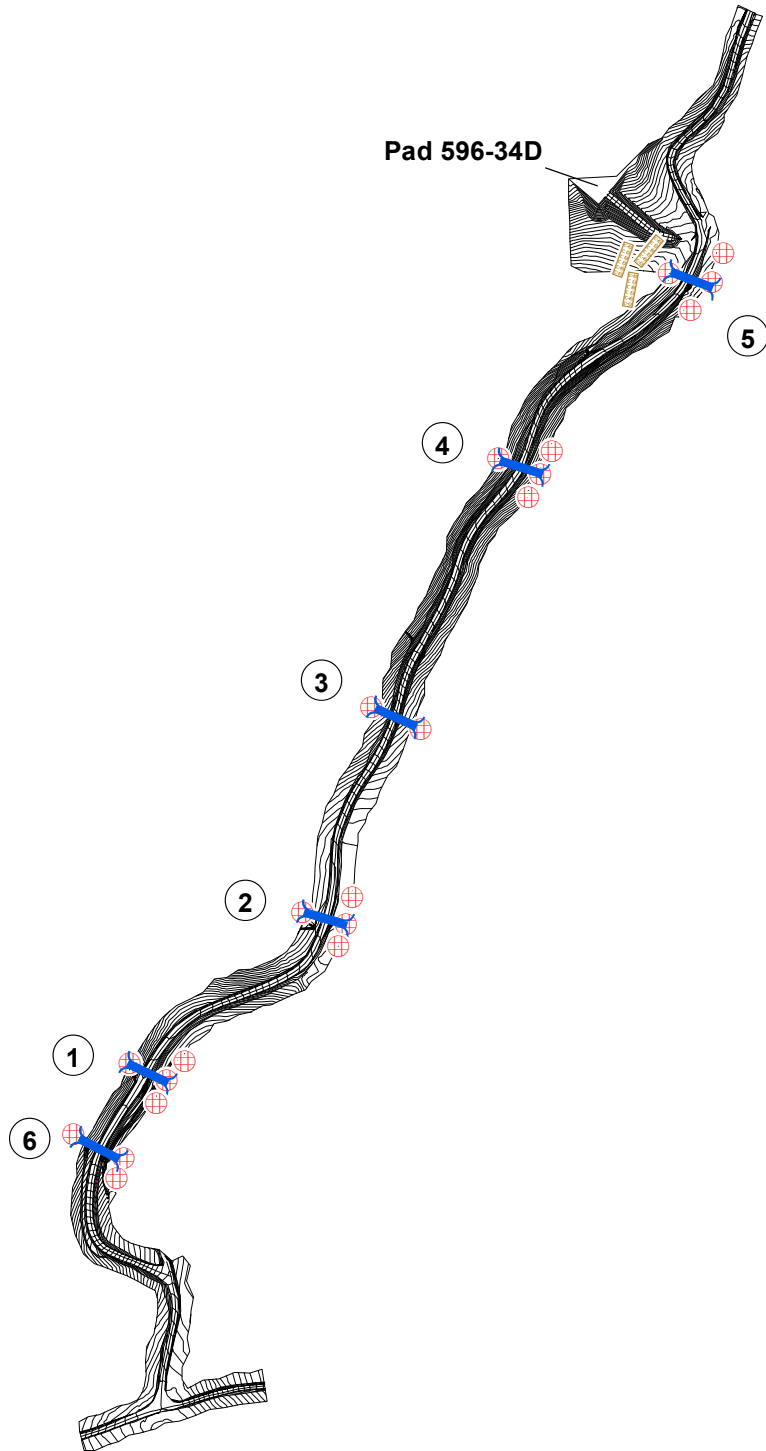
MARATHON OIL

REVISED	BY:	COMMENT:
3/28/2012	BJB	TEMPLATE CREATION
3/28/2012	BJB	MAP CREATION
8/27/2012	BJB	BMP REVISION



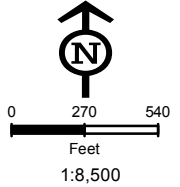
InterTech E&E, LLC
bbergstrom@ctbna.com
M:\Projects\Marathon\Piceance\Projects\SWMP\2012\596_34D\SWMP_596_34D_20120827.mxd

Receiving Waters:
West Fork Parachute Creek



Legend

- Culvert
- Sediment Trap
- Cattle Pond
- Water Bar
- Rip Rap
- Bales
- V-Ditch W/Check Dam
- Diversion Ditch
- Site Berm
- Toe Berm
- Fiber Roll
- Silt Fence
- Area To Be Reclaimed
- Fence
- Blanket
- Cut
- Fill
- Seeded & Hydromulched
- Soil Roughening
- Snow Storage



Not Present
Asphalt Or Concrete Batch Plants

Project Location



Garfield County

Map Index Overview



**Access Road To
Pad 596-34D**

Approximate Road Length = 6,283 LF

MARATHON OIL

REVISED	BY:	COMMENT:
3/28/2012	BJB	MAP CREATION
8/27/2012	BJB	BMP REVISION
9/24/2012	BJB	BMP REVISION
11/12/2013	BJB	BMP REVISION