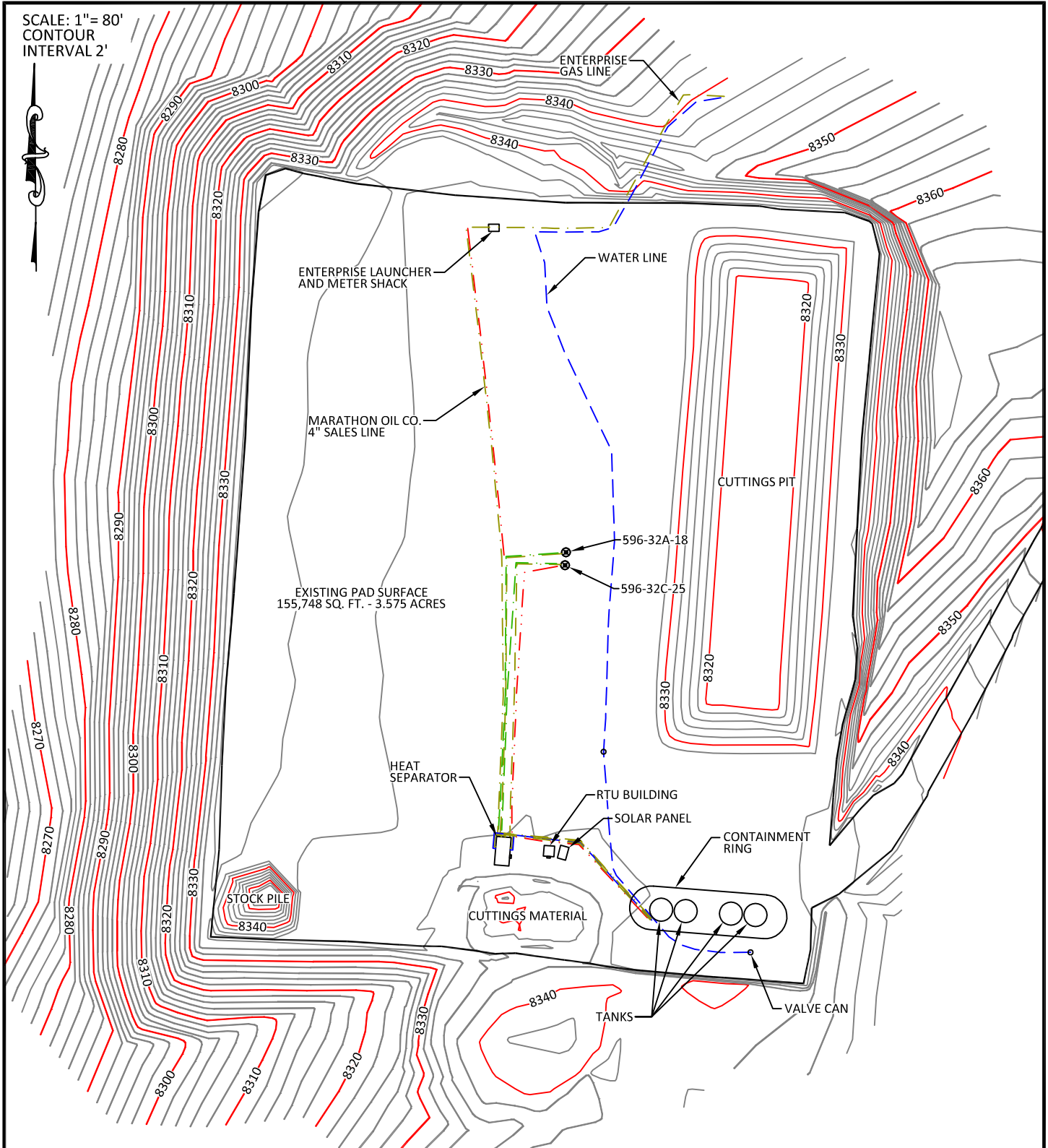


# PAD 596-32C

SCALE: 1" = 80'  
CONTOUR  
INTERVAL 2'



## CONFIDENTIALITY NOTES:

The information contained in this plat is legally privileged and confidential information intended only for the use of the recipients. If you are not the intended recipients, you are hereby notified that any use, dissemination, distribution or copying of this information is strictly prohibited.



**WILLIAM H. SMITH  
& ASSOCIATES P.C.**

**SURVEYING CONSULTANTS**

550 EAST SECOND NORTH PHONE: 307-875-3638  
GREEN RIVER, WY 307-875-3639  
www.wsmithpc.com

DRAWN BY: JSJ

CHECKED BY: WHD

PROJECT NO: N/A

JOB NO: 26099

REVISIONS:

## LEGEND

- GAS LINES
- WATER LINES
- CONDENSATE LINES
- GLYCOL LINES
- ELECTRIC LINES

## LOCATION:

**596-32C**  
WITHIN THE SW/4  
SECTION 32,  
T 5 S, R 96 W,  
6TH PM.  
GARFIELD COUNTY,  
COLORADO

**MARATHON OIL COMPANY**  
PO BOX 3128, HOUSTON TX, 77253  
5555 SAN FELIPE, HOUSTON TX, 77056

AS-BUILT PAD

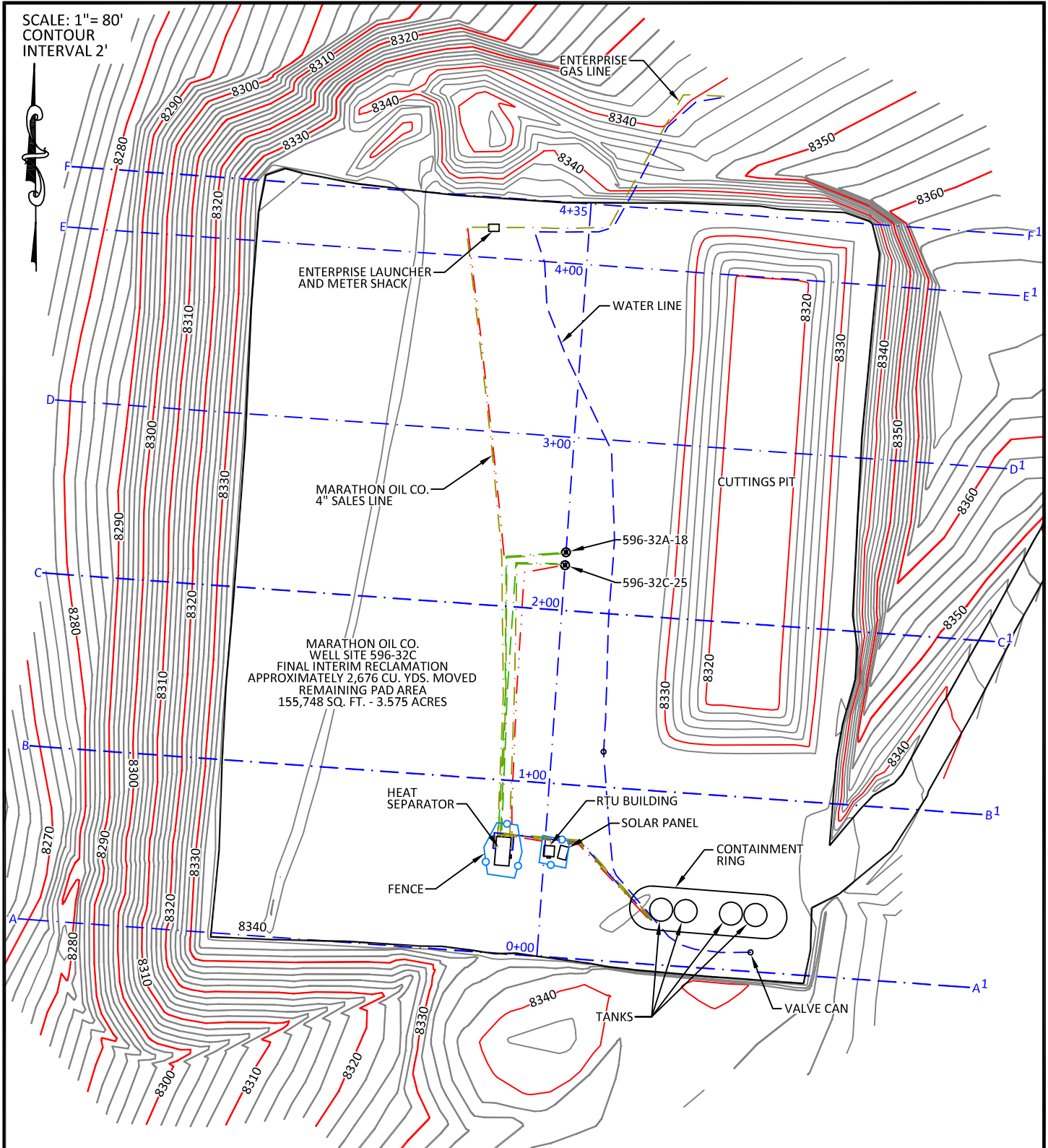
SCALE: 1" = 80'

DATE: 10/20/2011

EXHIBIT "A"

SHEET 1 OF 3

# PAD 596-32C



## CONFIDENTIALITY NOTES:

The information contained in this plat is legally privileged and confidential information intended only for the use of the recipients. If you are not the intended recipients, you are hereby notified that any use, dissemination, distribution or copying of this information is strictly prohibited.



**WILLIAM H. SMITH  
& ASSOCIATES P.C.**  
SURVEYING CONSULTANTS

550 EAST SECOND NORTH PHONE: 307-875-3638  
GREEN RIVER, WY 307-875-3639  
www.wsmithpc.com

DRAWN BY: JSJ  
PROJECT NO: N/A  
REVISIONS:

CHECKED BY: WHD  
JOB NO: 26099

## DATA

FINAL INTERIM RECLAMATION  
APPROXIMATELY 2,676 CU. YDS. MOVED

TOPSOIL USED FOR RECLAMATION  
APPROXIMATELY 0 CU. YDS. MOVED

REMAINING PAD AREA  
155,748 SQ. FT. - 3.575 ACRES

## LOCATION:

**596-32C**  
WITHIN THE SW/4  
SECTION 32,  
T 5 S, R 96 W,  
6TH PM.  
GARFIELD COUNTY,  
COLORADO

**MARATHON OIL COMPANY**  
PO BOX 3128, HOUSTON TX, 77253  
5555 SAN FELIPE, HOUSTON TX, 77056

INTERIM RECLAMATION ASBUILT

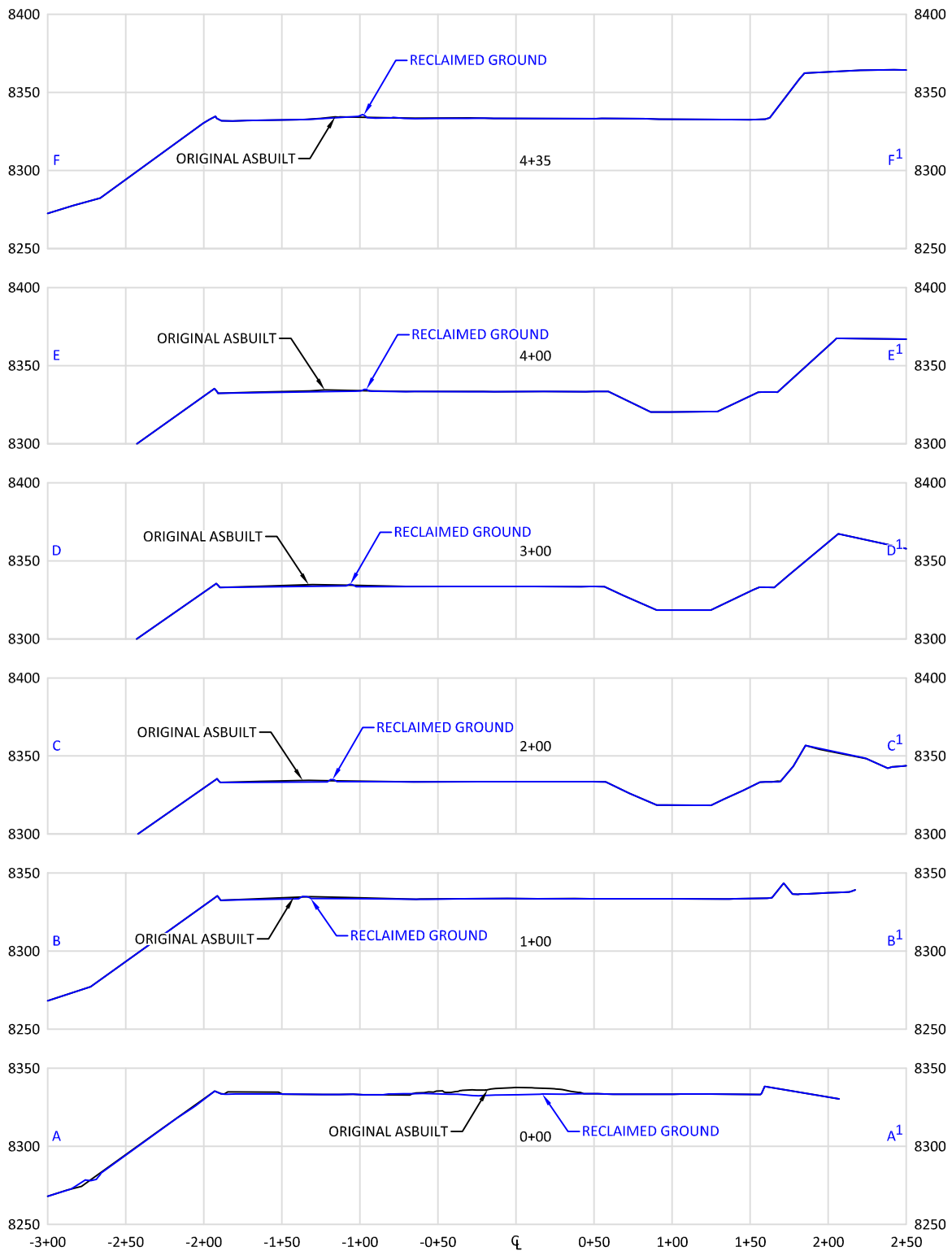
SCALE: 1" = 80'

DATE: 10/20/2011

EXHIBIT "A"

SHEET 2 OF 3

# PAD 596-32C



## CONFIDENTIALITY NOTES:

The information contained in this plat is legally privileged and confidential information intended only for the use of the recipients. If you are not the intended recipients, you are hereby notified that any use, dissemination, distribution or copying of this information is strictly prohibited.



**WILLIAM H. SMITH  
& ASSOCIATES P.C.**

**SURVEYING CONSULTANTS**  
550 EAST SECOND NORTH PHONE: 307-875-3638  
GREEN RIVER, WY 307-875-3639  
www.whsmithpc.com

DRAWN BY: JSJ

CHECKED BY: WHD

PROJECT NO: N/A

JOB NO: 26099

REVISIONS:

## LEGEND

— ORIGINAL ASBUILT  
— RECLAIMED GROUND

## LOCATION:

**596-32C**  
WITHIN THE SW/4  
SECTION 32,  
T 5 S, R 96 W,  
6TH PM.  
GARFIELD COUNTY,  
COLORADO

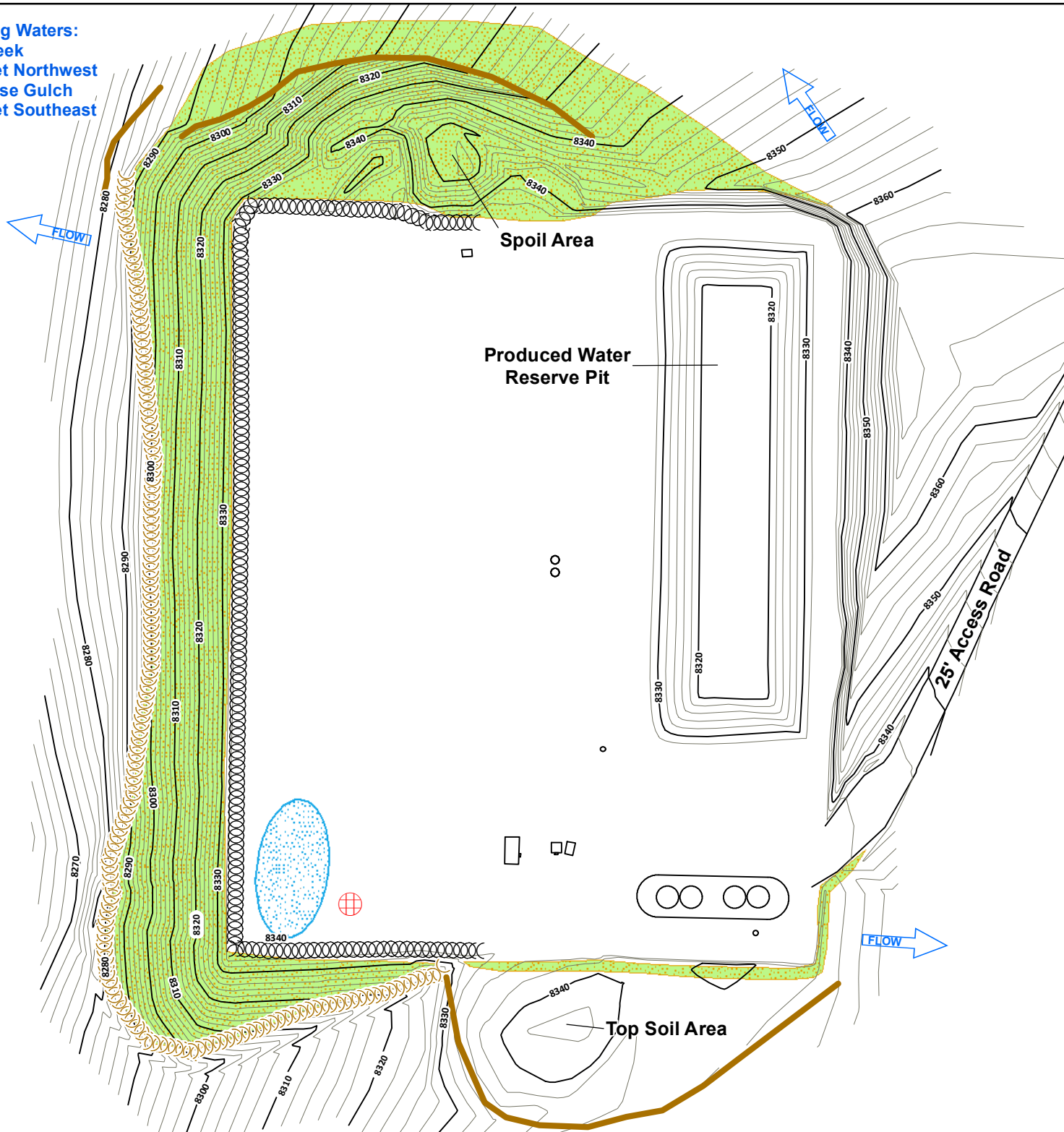
**MARATHON OIL COMPANY**  
PO BOX 3128, HOUSTON TX, 77253  
5555 SAN FELIPE, HOUSTON TX, 77056

**INTERIM RECLAMATION ASBUILT  
CROSS SECTIONS**

SCALE: 1"=100'H/100'V  
DATE: 10/20/2011

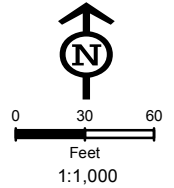
EXHIBIT "A"  
SHEET 3 OF 3

Receiving Waters:  
Little Creek  
1000 Feet Northwest  
Log House Gulch  
1800 Feet Southeast



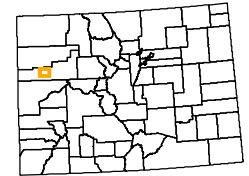
## Legend

- Culvert
- Sediment Trap
- Cattle Pond
- WB Water Bar
- Rip Rap
- Bales
- V-Ditch W/Check Dam
- Diversion Ditch
- Site Berm
- Toe Berm
- Fiber Roll
- Silt Fence
- Area To Be Reclaimed
- Fence
- Blanket
- Cut
- Fill
- Seeded & Hydromulched
- Soil Roughening
- Snow Storage
- Rip Rap (Large Area)



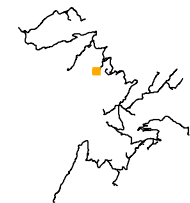
Not Present  
Asphalt Or Concrete Batch Plants

## Project Location



Garfield County

## Map Index Overview



**Pad Site  
596-32C**

Total Disturbed Area = 3.57 Acres

## MARATHON OIL

| REVISED   | BY: | COMMENT:     |
|-----------|-----|--------------|
| 3/28/2012 | BJB | MAP CREATION |
| 5/8/2012  | BJB | BMP REVISION |
| 8/27/2012 | BJB | BMP REVISION |
| 1/17/2014 | BJB | BMP REVISION |



InterTech E&E, LLC  
bbergstrom@cbmainc.com  
M:\Projects\Marathon\Peaceance\Projects\SWMP\2014\596\_32C\SWMP\_596\_32C\_20140117.mxd

Receiving Waters:  
Little Creek  
1380 Feet Northwest  
House Log Gulch  
3000 Feet Southeast



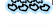





Access Road To  
Garden Gulch Extension Road

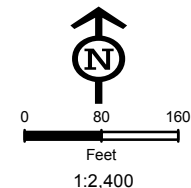
Non-Marathon  
Road & BMP's

Access Road To  
Berry Site

Pad 596-32C

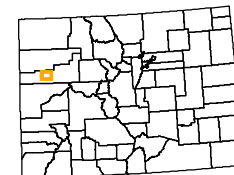
## Legend

-  Culvert
-  Sediment Trap
-  Cattle Pond
-  Water Bar
-  Rip Rap
-  Bales
-  V-Ditch W/Check Dam
-  Diversion Ditch
-  Site Berm
-  Toe Berm
-  Fiber Roll
-  Silt Fence
-  Area To Be Reclaimed
-  Fence
-  Blanket
-  Cut
-  Fill
-  Seeded & Hydromulched
-  Soil Roughening
-  Snow Storage



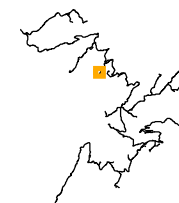
Not Present  
Asphalt Or Concrete Batch Plants

### Project Location



Garfield County

### Map Index Overview



### Access Road To Pad 596-32C

Approximate Road Length = 830 LF

### MARATHON OIL

| REVISED   | BY: | COMMENT:          |
|-----------|-----|-------------------|
| 3/28/2012 | BJB | TEMPLATE CREATION |
| 3/28/2012 | BJB | MAP CREATION      |



InterTech E&E, LLC  
bbergstrom@cbmainc.com  
M:\Projects\Marathon\Peace\Projects\SWMP\2012\596\_32C\SWMP\_596\_32C\_Road\_20120328.mxd