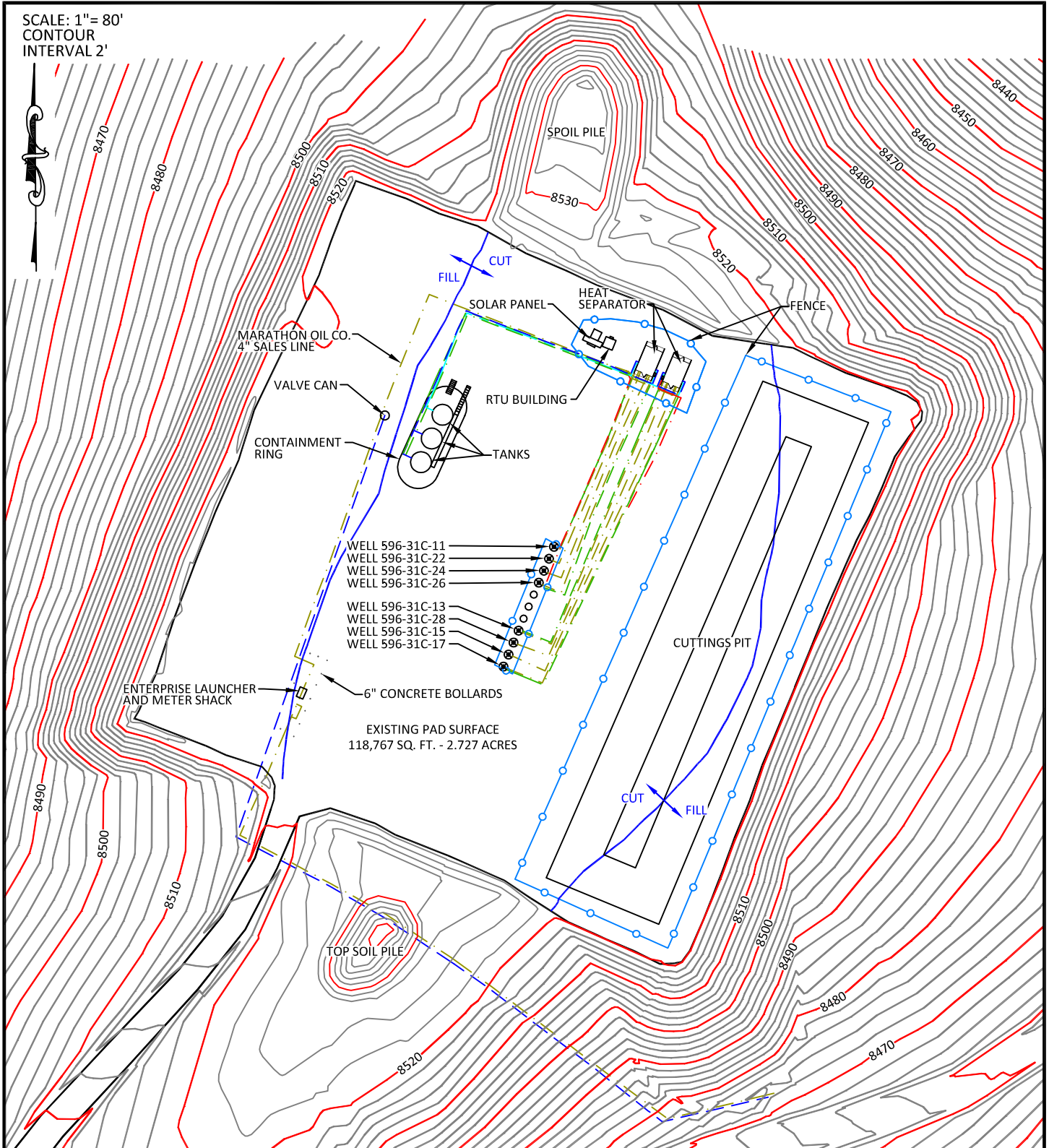


PAD 596-31C

SCALE: 1"= 80'
CONTOUR
INTERVAL 2'



CONFIDENTIALITY NOTES:

The information contained in this plat is legally privileged and confidential information intended only for the use of the recipients. If you are not the intended recipients, you are hereby notified that any use, dissemination, distribution or copying of this information is strictly prohibited.



**WILLIAM H. SMITH
& ASSOCIATES P.C.**

SURVEYING CONSULTANTS
550 EAST SECOND NORTH PHONE: 307-875-3638
GREEN RIVER, WY 307-875-3639
www.whsmithpc.com

DRAWN BY: JSJ

CHECKED BY: WHD

PROJECT NO: N/A

JOB NO: 26099

REVISIONS:

LEGEND

- GAS LINES
- WATER LINES
- CONDENSATE LINES
- GLYCOL LINES
- ELECTRIC LINES

LOCATION:

596-31C
WITHIN LOT 3 OF
SECTION 31,
T 5 S, R 96 W, 6TH
PM.
GARFIELD COUNTY,
COLORADO

MARATHON OIL COMPANY
PO BOX 3128, HOUSTON TX, 77253
5555 SAN FELIPE, HOUSTON TX, 77056

AS-BUILT PAD

SCALE: 1"=80'

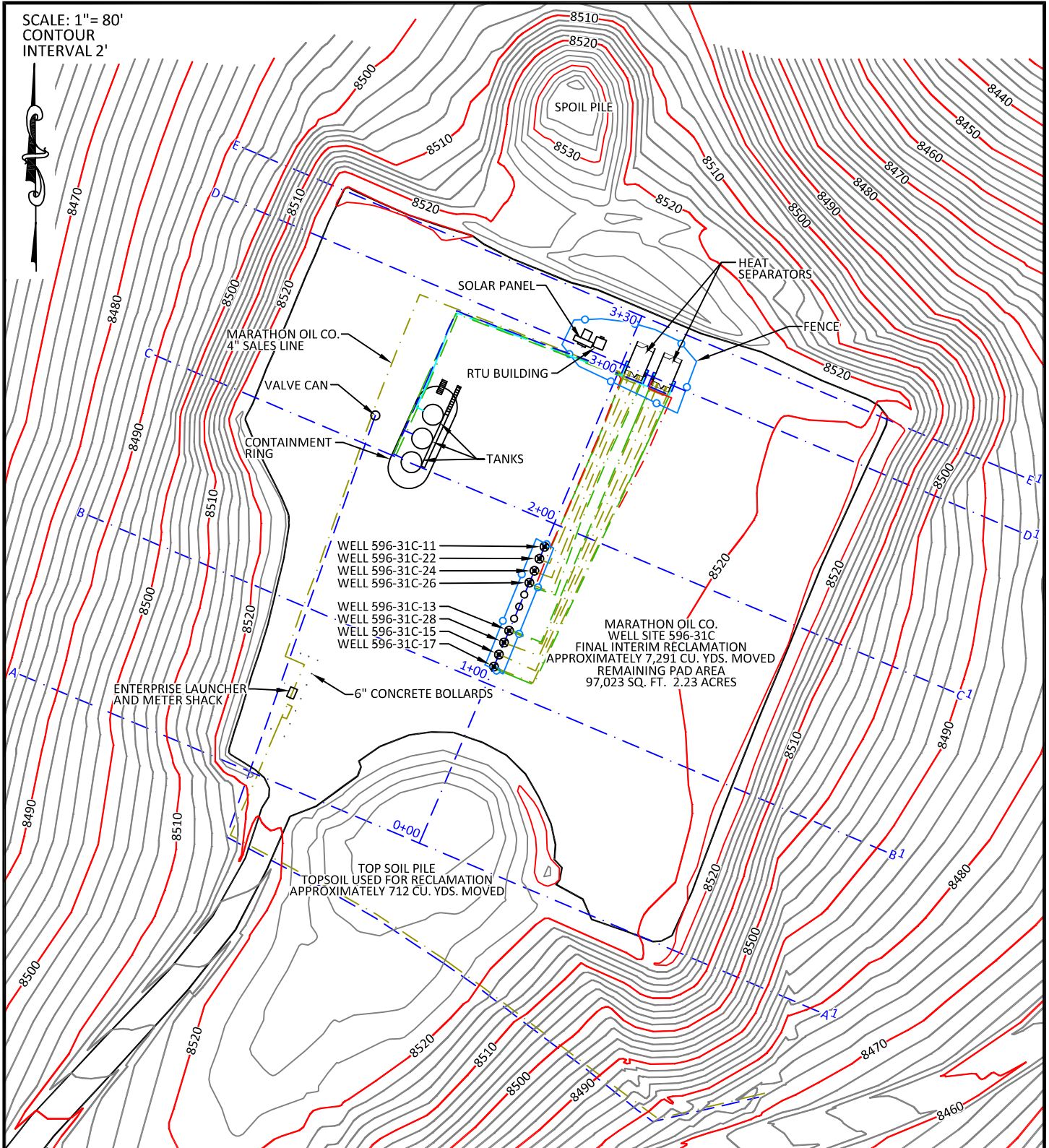
DATE: 10/10/2011

EXHIBIT "A"

SHEET 1 OF 3

PAD 596-31C

SCALE: 1" = 80'
CONTOUR
INTERVAL 2'



CONFIDENTIALITY NOTES:

The information contained in this plat is legally privileged and confidential information intended only for the use of the recipients. If you are not the intended recipients, you are hereby notified that any use, dissemination, distribution or copying of this information is strictly prohibited.



**WILLIAM H. SMITH
& ASSOCIATES P.C.**

SURVEYING CONSULTANTS

550 EAST SECOND NORTH PHONE: 307-875-3638
GREEN RIVER, WY 307-875-3639
www.whsmithpc.com

DRAWN BY: JSJ

CHECKED BY: WHD

PROJECT NO: N/A

JOB NO: 26099

REVISIONS:

DATA

FINAL INTERIM RECLAMATION
APPROXIMATELY 7,291 CU. YDS. MOVED

TOPSOIL USED FOR RECLAMATION
APPROXIMATELY 712 CU. YDS. MOVED

REMAINING PAD AREA
97,023 SQ. FT. 2.23 ACRES

LOCATION:

596-31C
WITHIN LOT 3 OF
SECTION 31,
T 5 S, R 96 W, 6TH
PM.
GARFIELD COUNTY,
COLORADO

MARATHON OIL COMPANY
PO BOX 3128, HOUSTON TX, 77253
5555 SAN FELIPE, HOUSTON TX, 77056

INTERIM RECLAMATION ASBUILT

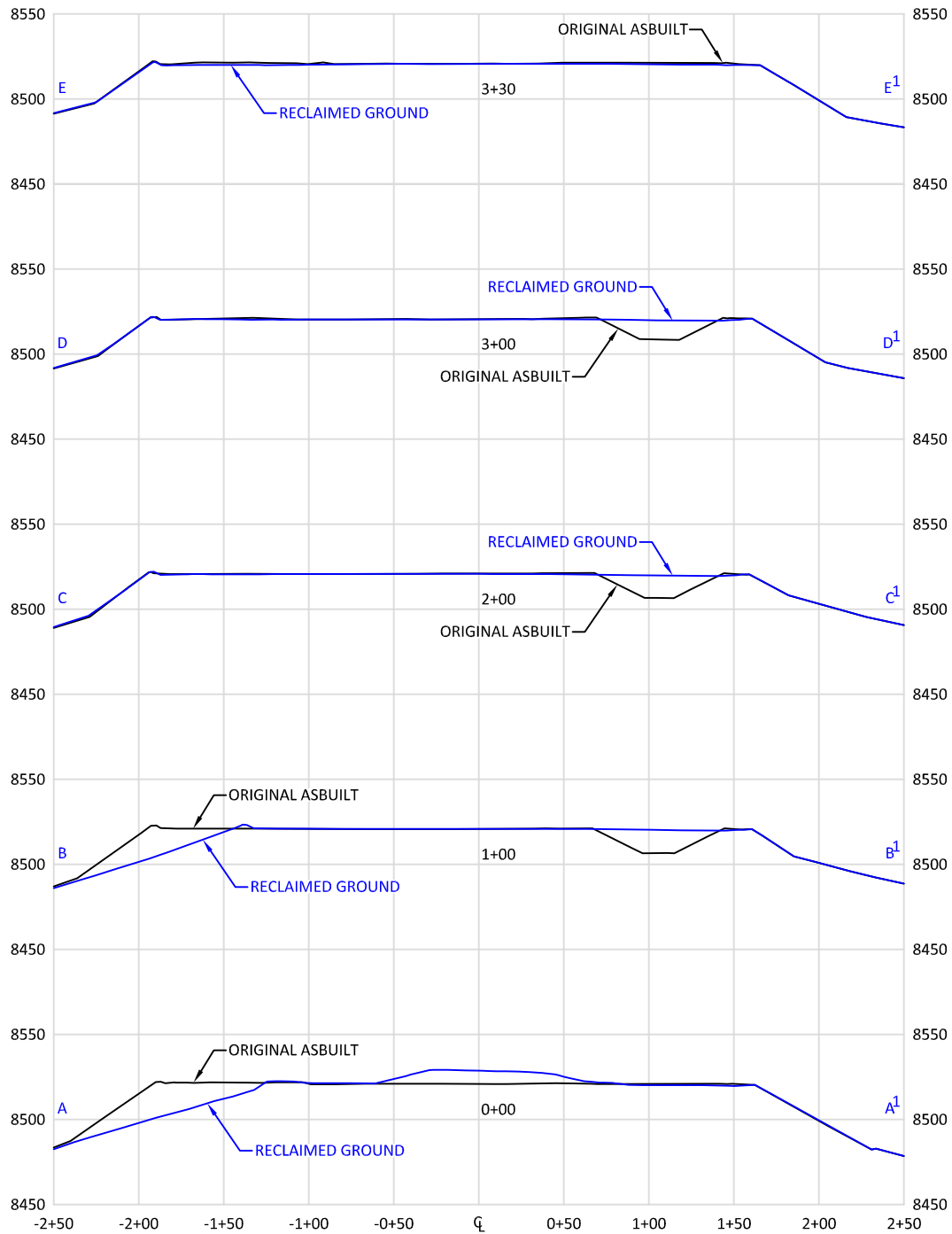
SCALE: 1" = 80'

DATE: 10/10/2011

EXHIBIT "A"

SHEET 2 OF 3

PAD 596-31C



CONFIDENTIALITY NOTES:

The information contained in this plat is legally privileged and confidential information intended only for the use of the recipients. If you are not the intended recipients, you are hereby notified that any use, dissemination, distribution or copying of this information is strictly prohibited.



**WILLIAM H. SMITH
& ASSOCIATES P.C.**

SURVEYING CONSULTANTS
550 EAST SECOND NORTH PHONE: 307-875-3638
GREEN RIVER, WY 307-875-3639
www.whsmithpc.com

DRAWN BY: JSJ

CHECKED BY: WHD

PROJECT NO: N/A

JOB NO: 26099

REVISIONS:

LEGEND

— ORIGINAL ASBUILT
— RECLAIMED GROUND

LOCATION:

596-31C
WITHIN LOT 3 OF
SECTION 31,
T 5 S, R 96 W, 6TH
PM.
GARFIELD COUNTY,
COLORADO

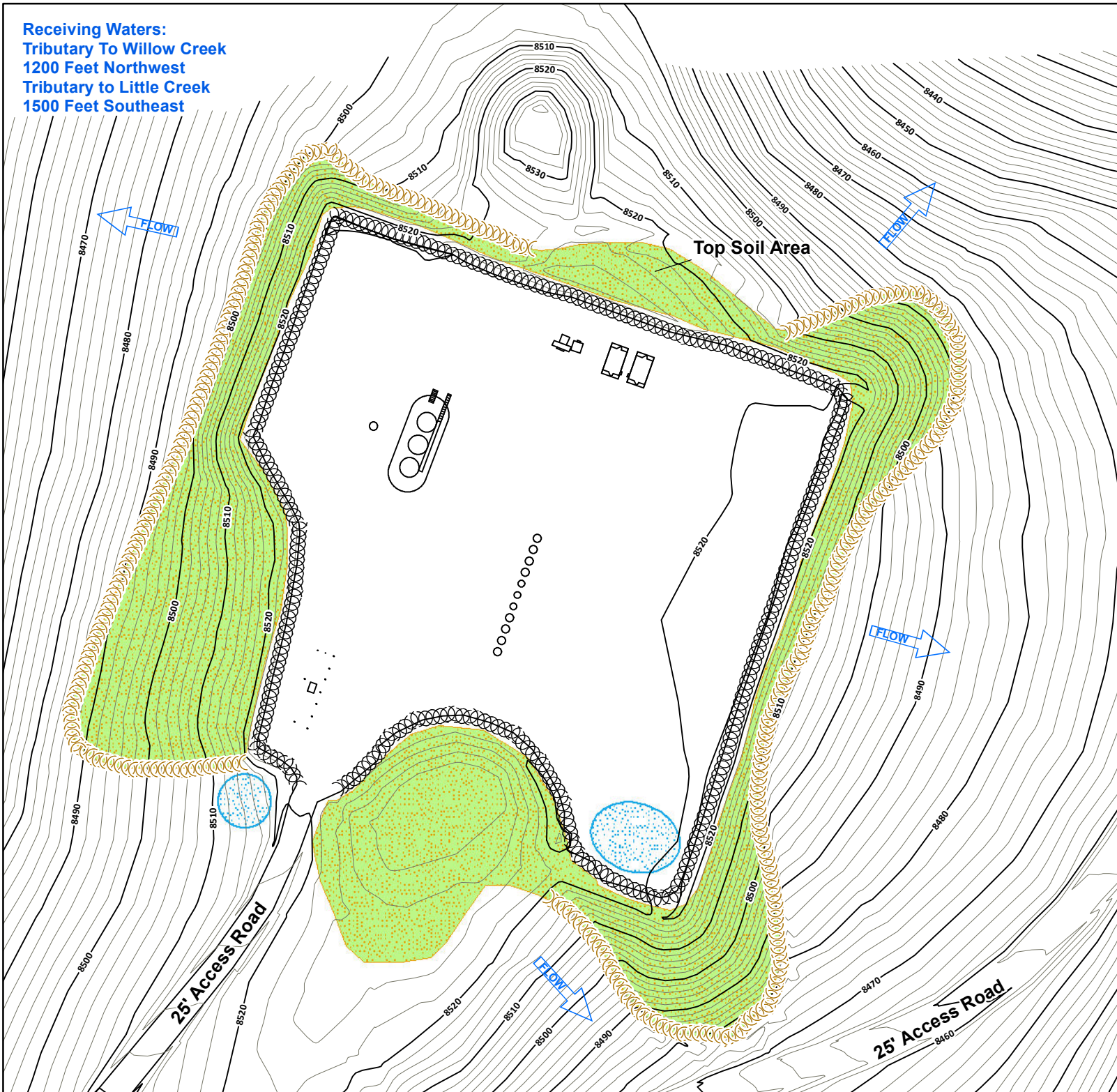
MARATHON OIL COMPANY
PO BOX 3128, HOUSTON TX, 77253
5555 SAN FELIPE, HOUSTON TX, 77056

**INTERIM RECLAMATION ASBUILT
CROSS SECTIONS**

SCALE: 1"=100'H/100'V
DATE: 10/10/2011

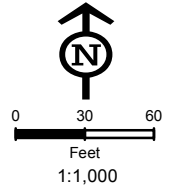
EXHIBIT "A"
SHEET 3 OF 3

Receiving Waters:
Tributary To Willow Creek
1200 Feet Northwest
Tributary to Little Creek
1500 Feet Southeast



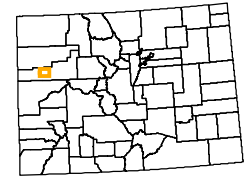
Legend

- Culvert
- Sediment Trap
- Cattle Pond
- Water Bar
- Rip Rap
- Bales
- V-Ditch W/Check Dam
- Diversion Ditch
- Site Berm
- Toe Berm
- Fiber Roll
- Silt Fence
- Area To Be Reclaimed
- Blanket
- Cut
- Fill
- Seeded & Hydromulched
- Soil Roughening
- Snow Storage
- Rip Rap (Large Area)



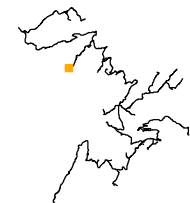
Not Present
Asphalt Or Concrete Batch Plants

Project Location



Garfield County

Map Index Overview



**Pad Site
596-31C**

Total Disturbed Area = 2.23 Acres

MARATHON OIL

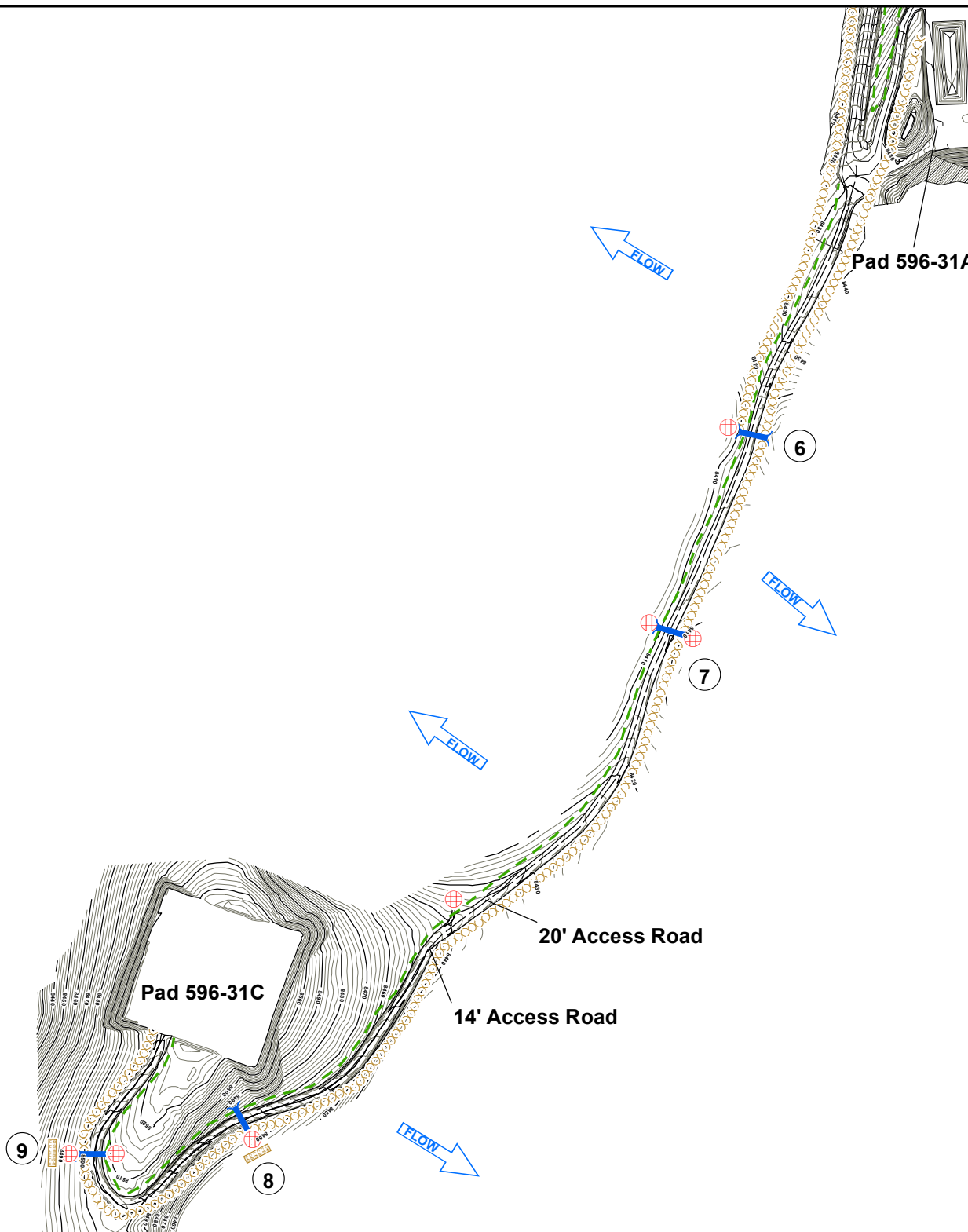
REVISED	BY:	COMMENT:
3/28/2012	BJB	TEMPLATE CREATION
3/28/2012	BJB	MAP CREATION
5/8/2012	BJB	BMP REVISION
8/27/2012	BJB	BMP REVISION



InterTech

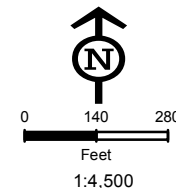
InterTech E&E, LLC
bbergstrom@cbmainc.com
M:\Projects\Marathon\Picanceo\Projects\SWMP\2012\596_31C\SWMP_596_31C_20120827.mxd

Receiving Waters:
Willow Creek
2500 Feet Northwest
Tributary To Little Creek
1500 Feet Southeast



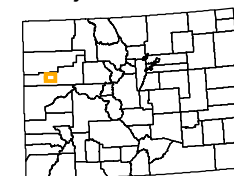
Legend

- Culvert
- Sediment Trap
- Cattle Pond
- Water Bar
- Rip Rap
- Bales
- V-Ditch W/Check Dam
- Diversion Ditch
- Site Berm
- Toe Berm
- Fiber Roll
- Silt Fence
- Area To Be Reclaimed
- Fence
- Blanket
- Cut
- Fill
- Seeded & Hydromulched
- Soil Roughening
- Snow Storage



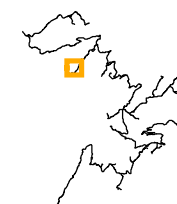
Not Present
Asphalt Or Concrete Batch Plants

Project Location



Garfield County

Map Index Overview



Access Road To Pad 596-31C

Approximate Road Length =3,810 LF

MARATHON OIL

REVISED	BY:	COMMENT:
3/28/2012	BJB	TEMPLATE CREATION
3/28/2012	BJB	MAP CREATION
5/8/2012	BJB	BMP REVISION
8/27/2012	BJB	BMP REVISION



InterTech E&E, LLC
bbergstrom@cbmainc.com
M:\Projects\Marathon\Peace\Projects\SWMP\2012\596_31C\SWMP_596_31C_Road_20120827.mxd