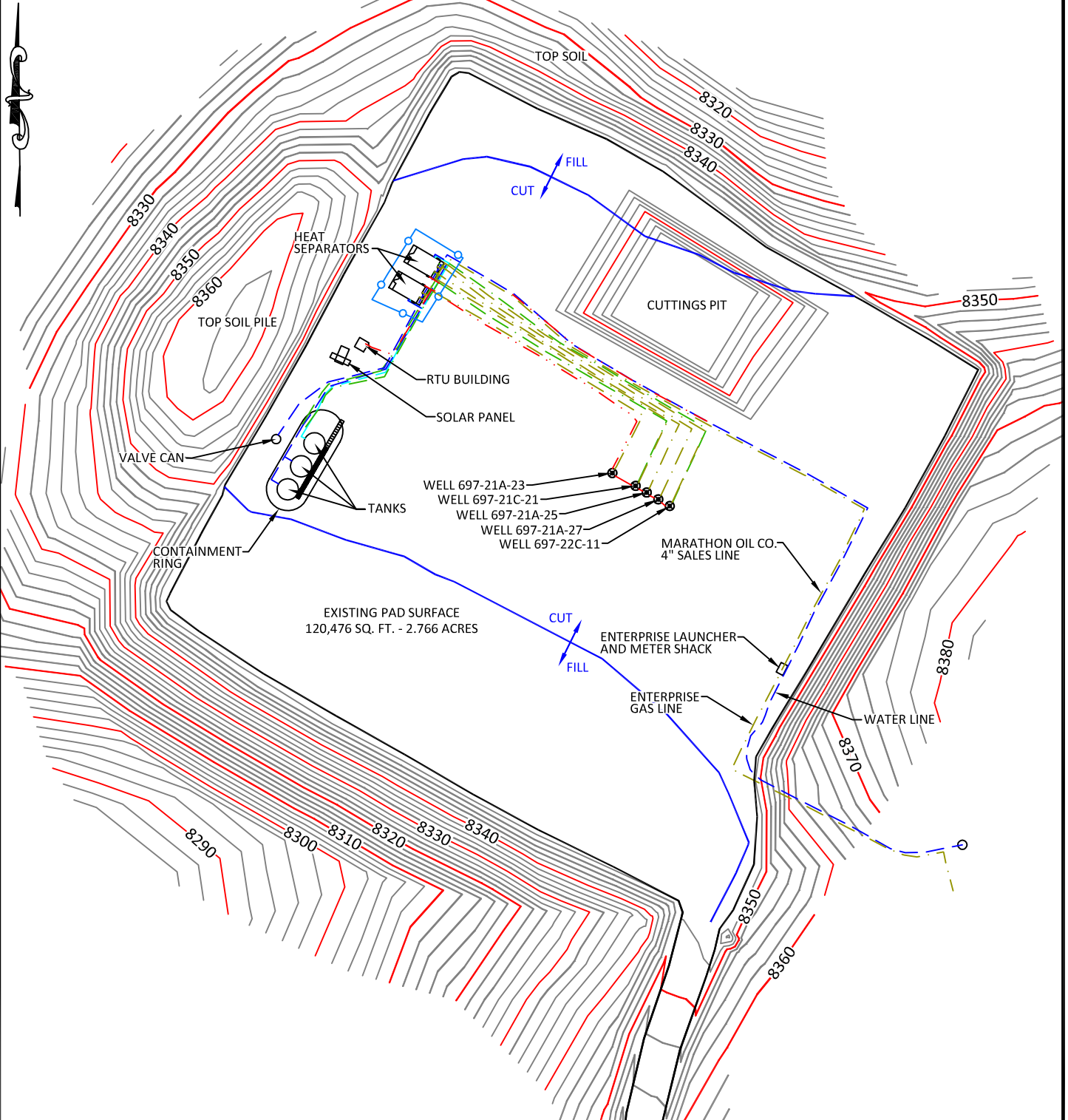


PAD 697-21A

SCALE: 1"= 80'
CONTOUR
INTERVAL 2'



CONFIDENTIALITY NOTES:

The information contained in this plat is legally privileged and confidential information intended only for the use of the recipients. If you are not the intended recipients, you are hereby notified that any use, dissemination, distribution or copying of this information is strictly prohibited.



**WILLIAM H. SMITH
& ASSOCIATES P.C.**

SURVEYING CONSULTANTS
550 EAST SECOND NORTH PHONE: 307-875-3638
GREEN RIVER, WY 307-875-3639
www.whsmithpc.com

DRAWN BY: JSJ

CHECKED BY: WHD

PROJECT NO: N/A

JOB NO: 26099

REVISIONS:

LEGEND

- GAS LINES
- WATER LINES
- CONDENSATE LINES
- GLYCOL LINES
- ELECTRIC LINES

**LOCATION:
PAD 697-21A**

WITHIN THE SE/4
NE/4, SECTION 21,
T6S, R97W, 6TH
PM.

GARFIELD COUNTY,
COLORADO

MARATHON OIL COMPANY
PO BOX 3128, HOUSTON TX, 77253
5555 SAN FELIPE, HOUSTON TX, 77056

AS-BUILT PAD

SCALE: 1"=80'

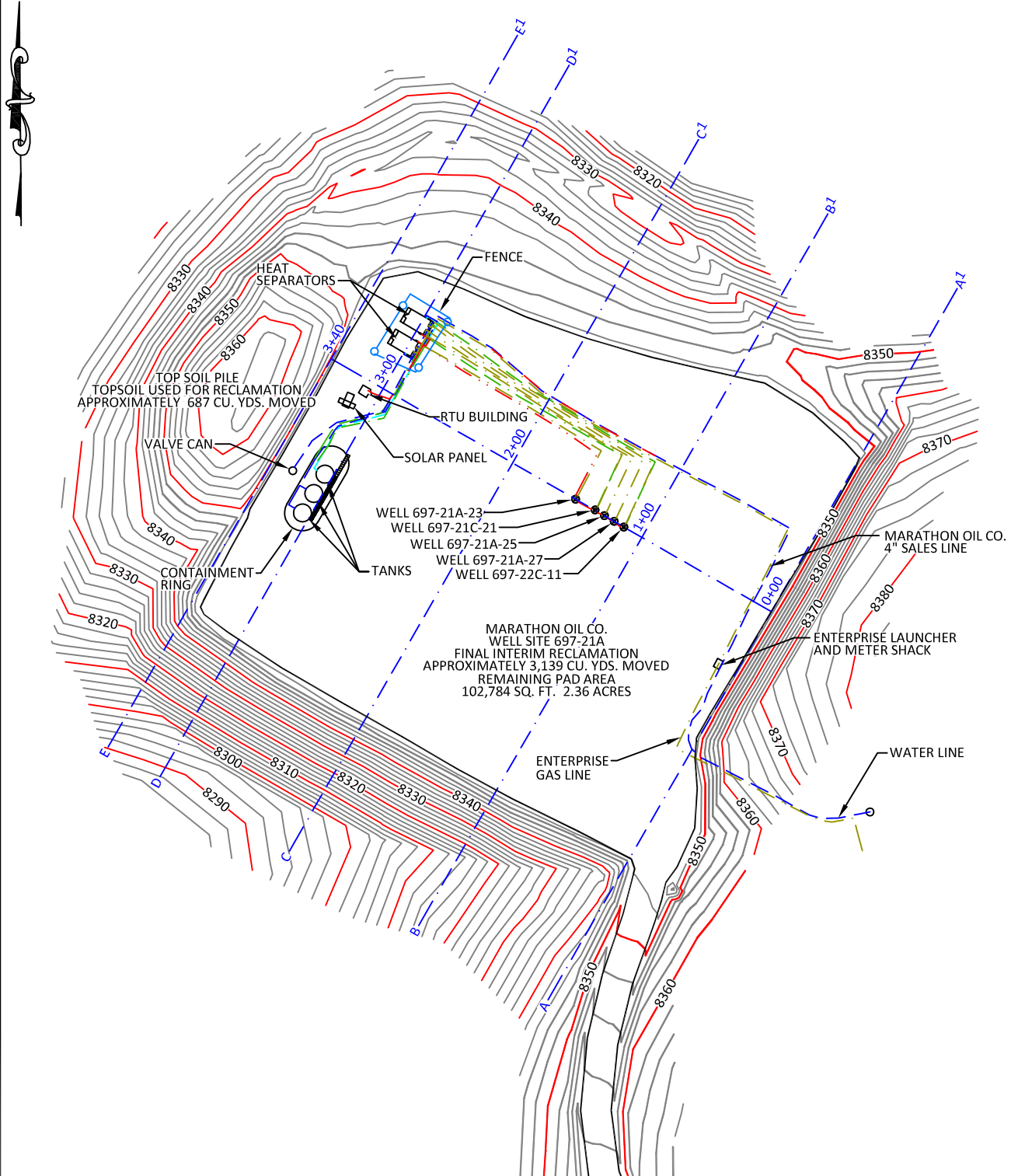
DATE: 10/17/2011

EXHIBIT "A"

SHEET 1 OF 3

PAD 697-21A

SCALE: 1"= 100'
CONTOUR
INTERVAL 2'



CONFIDENTIALITY NOTES:

The information contained in this plat is legally privileged and confidential information intended only for the use of the recipients. If you are not the intended recipients, you are hereby notified that any use, dissemination, distribution or copying of this information is strictly prohibited.



**WILLIAM H. SMITH
& ASSOCIATES P.C.**

SURVEYING CONSULTANTS
550 EAST SECOND NORTH PHONE: 307-875-3638
GREEN RIVER, WY 307-875-3639
www.whsmithpc.com

DRAWN BY: JSJ

CHECKED BY: WHD

PROJECT NO: N/A

JOB NO: 26099

REVISIONS:

DATA

FINAL INTERIM RECLAMATION
APPROXIMATELY 3,139 CU. YDS. MOVED

TOPSOIL USED FOR RECLAMATION
APPROXIMATELY 687 CU. YDS. MOVED

REMAINING PAD AREA
102,784 SQ. FT. 2.36 ACRES

LOCATION:

PAD 697-21A
WITHIN THE SE/4
NE/4, SECTION 21,
T6S, R97W, 6TH
PM.
GARFIELD COUNTY,
COLORADO

MARATHON OIL COMPANY
PO BOX 3128, HOUSTON TX, 77253
5555 SAN FELIPE, HOUSTON TX, 77056

INTERIM RECLAMATION ASBUILT

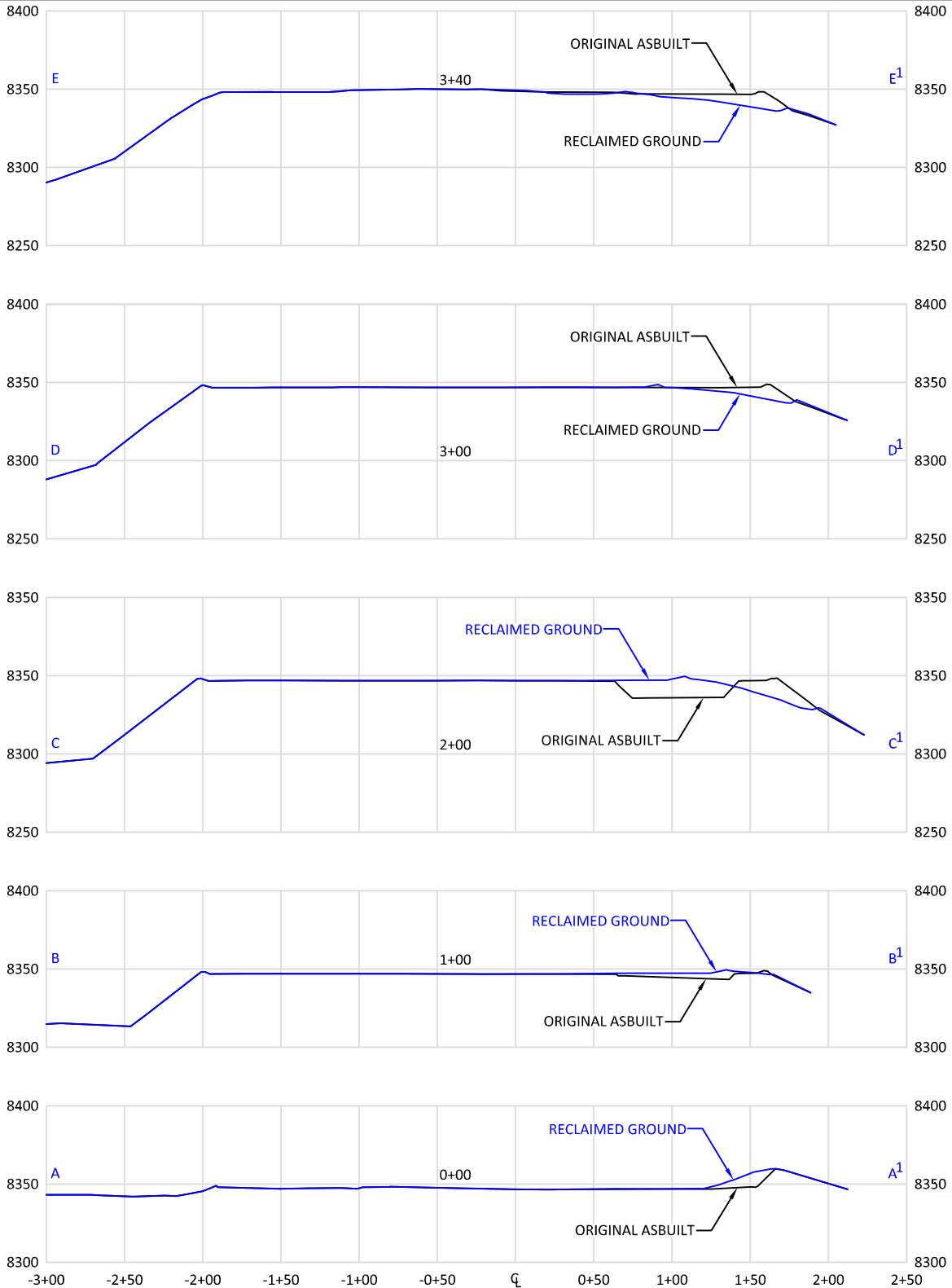
SCALE: 1"=100'

DATE: 10/17/2011

EXHIBIT "A"

SHEET 2 OF 3

PAD 697-21A



CONFIDENTIALITY NOTES:

The information contained in this plat is legally privileged and confidential information intended only for the use of the recipients. If you are not the intended recipients, you are hereby notified that any use, dissemination, distribution or copying of this information is strictly prohibited.



**WILLIAM H. SMITH
& ASSOCIATES P.C.**

SURVEYING CONSULTANTS
550 EAST SECOND NORTH PHONE: 307-875-3638
GREEN RIVER, WY 307-875-3639
www.whsmithpc.com

DRAWN BY: JSJ

CHECKED BY: WHD

PROJECT NO: N/A

JOB NO: 26099

REVISIONS:

LEGEND

— ORIGINAL ASBUILT
— RECLAIMED GROUND

LOCATION:

PAD 697-21A
WITHIN THE SE/4
NE/4, SECTION 21,
T6S, R97W, 6TH
PM.
GARFIELD COUNTY,
COLORADO

MARATHON OIL COMPANY
PO BOX 3128, HOUSTON TX, 77253
5555 SAN FELIPE, HOUSTON TX, 77056

**INTERIM RECLAMATION ASBUILT
CROSS SECTIONS**

SCALE: 1"=100'H/100'V

DATE: 10/17/2011

EXHIBIT "A"

SHEET 3 OF 3

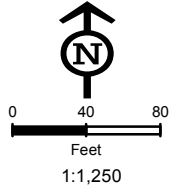
Receiving Waters:
Tributary In Cascade Canyon
To Conn Creek
2500 Feet West

Top Soil Pile



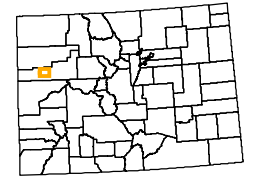
Legend

- Culvert
- Sediment Trap
- Cattle Pond
- Water Bar
- Rip Rap
- Bales
- V-Ditch W/Check Dam
- Diversion Ditch
- Site Berm
- Toe Berm
- Fiber Roll
- Silt Fence
- Area To Be Reclaimed
- Blanket
- Cut
- Fill
- Seeded & Hydromulched
- Soil Roughening
- Snow Storage



Not Present
Asphalt Or Concrete Batch Plants

Project Location



Garfield County

Map Index Overview



Pad Site 697-21A

Total Disturbed Area = 2.36 Acres

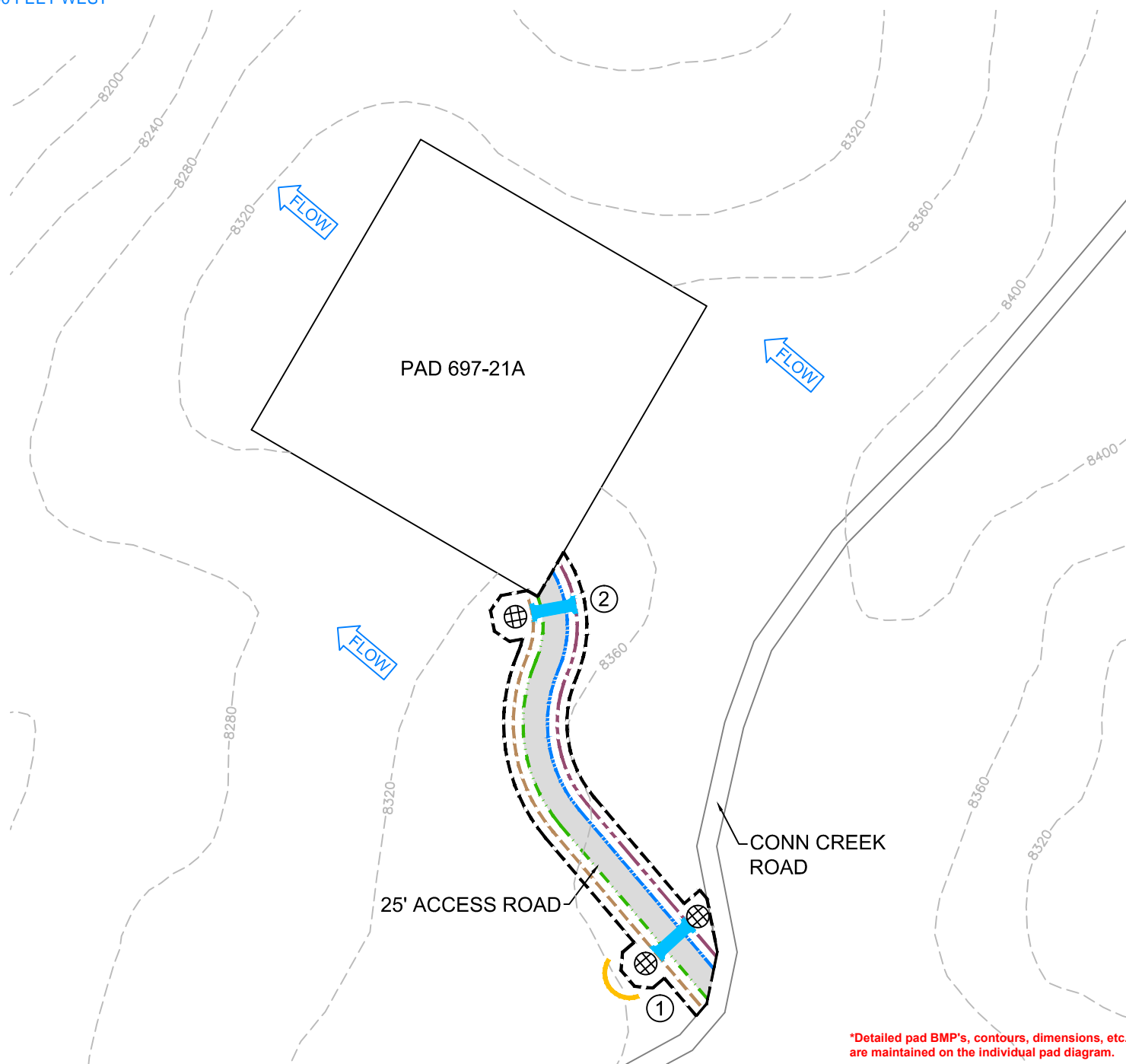
MARATHON OIL

REVISED	BY:	COMMENT:
3/28/2012	BJB	TEMPLATE CREATION
3/28/2012	BJB	MAP CREATION
8/27/2012	BJB	BMP REVISION



InterTech E&E, LLC
bbergstrom@cbmainc.com
M:\Projects\Marathon\Peace\Projects\SWMP\2012\697_21A\SWMP_697_21A_20120827.mxd

RECEIVING WATERS:
CASCADE CANYON
2500 FEET WEST



LEGEND

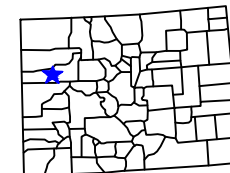
- CONSTRUCTION SITE BOUNDARY AND LIMITS OF DISTURBANCE (0.8 ACRES)
- AREA OF CUT
- AREA OF FILL
- SITE BERM
- FIBER ROLL
- V-DITCH WITH CHECK DAM
- RIP RAP
- SEDIMENT BASIN
- ROCK CHECK DAM
- CULVERT
- BALES



NOT PRESENT
ASPHALT OR CONCRETE BATCH PLANTS

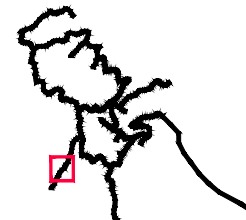
COMMENTS:
CHECK DAMS TO BE REMOVED
DURING WINTER
WATER BARS ARE BEING INSTALLED AND
MAINTAINED AS NEEDED.

PROJECT LOCATION



GARFIELD COUNTY

MAP INDEX OVERVIEW



ACCESS ROAD TO PAD 697-21A

APPROXIMATE ROAD LENGTH = 490 LF

MARATHON OIL COMPANY

REVISED	BY:	COMMENT:
04/02/12	K.A.	BMP'S REVISED PER J.S.
12/12/12	K.A.	BMP'S REVISED PER B.B.

MAP MAINTAINED IN CAD



InterTech E&E, LLC
kanders@cbmainc.com
M:\Projects\Marathon\Peace\DWG\Storm
water\Master-road_Revised_20121212.dwg

*Detailed pad BMP's, contours, dimensions, etc.
are maintained on the individual pad diagram.