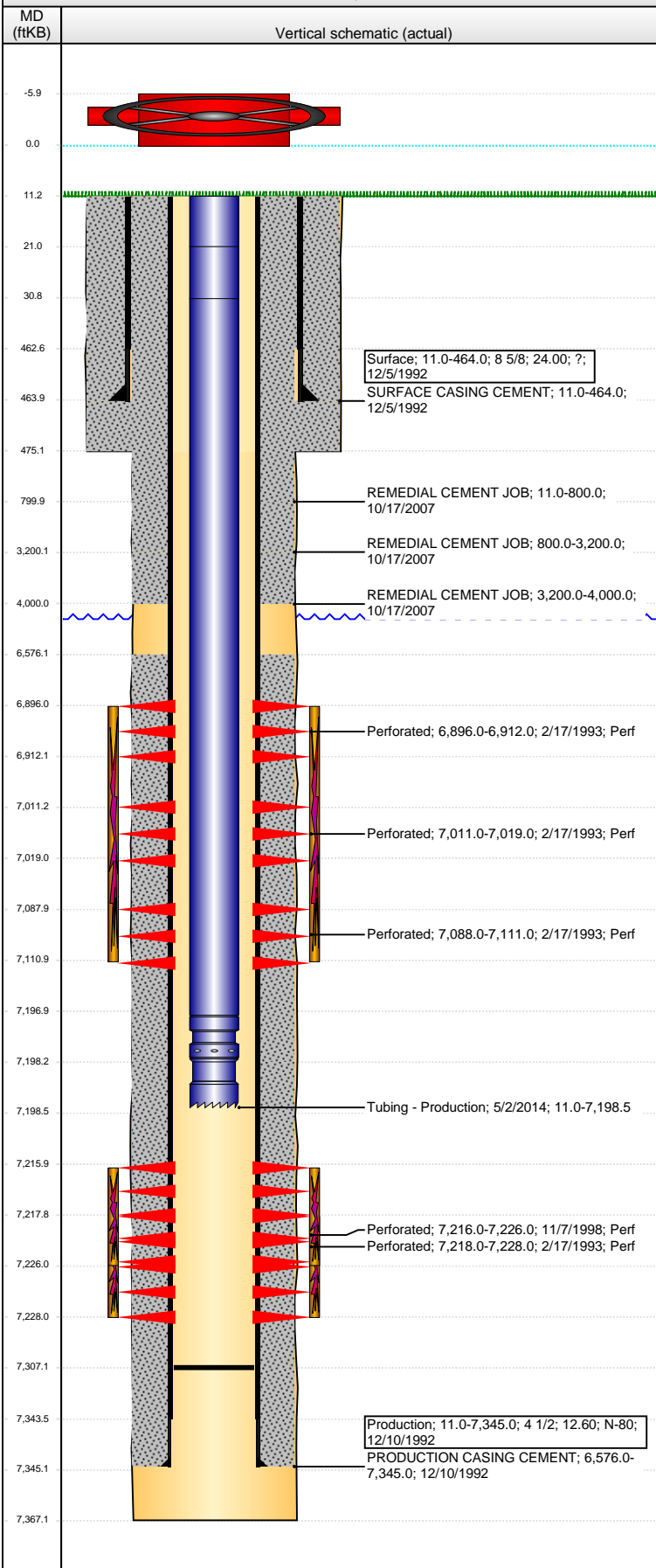


**Well Name: KAMMERZELL 07-42**

VERTICAL - ORIGINAL HOLE, 3/24/2016 10:32:14 AM



<b>Well Header</b>			
API 05-123-16426	Business Unit DJ BASIN	District 15	Well Config VERTICAL
Original KB Elevation (ft) 4,742	KB - GL / MSL (ftKB) 11.00	Spud Date 12/4/1992	P & A Date
Comment			

Directions To Well  
HWY 60 AND CR 46, W 3/10, N 2/10, NE/E/N 2/10

<b>Congressional Location</b>							
Quarter 1 SE	Quarter 2 NW	Quarter 3 SE	Quarter 4 SE	Section 7	Township 4 N	Twnshp N... N	Range 66 W

<b>Bottom Hole Location</b>			
North-South Distance (ft)	From N or S Line	East-West Distance (ft)	From E or W Line

<b>Plug Back Total Depths</b>			
Date	Depth (ftKB)	Method	Com
12/15/1992	7,303.0	CASED HOLE LOG	DEPTH LOGGER ON CBL
10/18/2007	7,313.0	TAG	CLEAN OUT TO LAND TUBING
2/28/2014	7,307.0		DID NOT TAG 120' BELOW EOT

<b>Wellbore Sections</b>			
Section Des	Size (in)	Act Top, MD (ftKB)	Act Btm, MD (ftKB)
SURFACE	12 1/4	11.0	475.0
PRODUCTION	7 7/8	475.0	7,367.0

<b>Zone Statuses</b>					
Zone Name	Status Date	Status	Fluid Type	Job	Prod Method
CODELL	3/26/1993	PR	Water	DRILLING/CO...	Flowing
CODELL	11/15/1998	PR		RE-FRAC, 11/6...	
CODELL	10/15/2007	SI		REMEDIAL CE...	
CODELL	10/18/2007	PR		REMEDIAL CE...	
CODELL	5/13/2010	PR			
CODELL	1/19/2015	PR			
NIOBRARA	3/26/1993	PR		DRILLING/CO...	
NIOBRARA	10/15/2007	SI		REMEDIAL CE...	
NIOBRARA	10/18/2007	PR		REMEDIAL CE...	
NIOBRARA	5/13/2010	PR			
NIOBRARA	1/19/2015	PR			

<b>Casing Strings</b>							
<b>Surface, 464.0ftKB</b>							
Casing Description	Run Date	OD (in)	Wt/Len (l...)	Grade	Top, MD (ft...)	MD (ftKB)	
Surface	12/5/1992	8 5/8	24.00	?	11.0	464.0	

<b>Production, 7,345.0ftKB</b>							
Casing Description	Run Date	OD (in)	Wt/Len (l...)	Grade	Top, MD (ft...)	MD (ftKB)	
Production	12/10/1992	4 1/2	12.60	N-80	11.0	7,345.0	

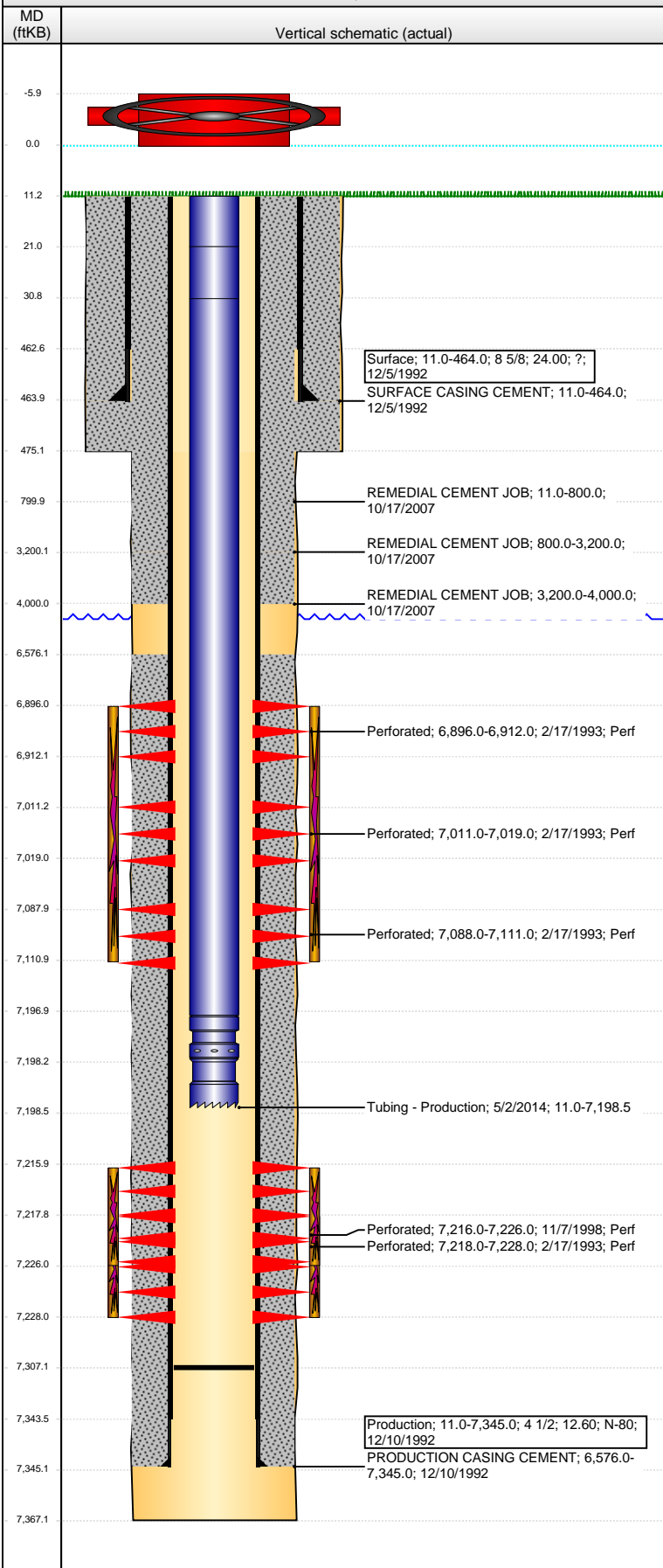
<b>Cement</b>			
Description	Top Depth (ftKB)	Bottom Depth (ftKB)	
SURFACE CASING CEMENT	11.0	464.0	
PRODUCTION CASING CEMENT	6,576.0	7,345.0	
REMEDIAL CEMENT JOB	11.0	800.0	
REMEDIAL CEMENT JOB	800.0	3,200.0	
REMEDIAL CEMENT JOB	3,200.0	4,000.0	

<b>Tubing Strings</b>								
Tubing Description	Run Date	String...	ID (in)	Wt (lb/ft)	Grade	Len (ft)	Set De...	
Tubing	10/18/2007	7	2 3/8	1.995	?	7,176.00		
Tubing - Production	5/2/2014		2 3/8	1.995	4.70	7,187.45		

<b>Tubing Components</b>							
Item Des	OD (in)	Wt (lb/ft)	Grade	Jts	Len (ft)	Btm (ftKB)	Btm (TVD) (ftKB)
EUE 8rd Tubing	2 3/8	4.70	J-55	1	10.00	21.0	
EUE 8rd Tubing	2 3/8	4.70	J-55	1	10.00	31.0	
Tubing	2 3/8	4.70	J-55	228	7,165.95	7,197.0	

**Well Name: KAMMERZELL 07-42**

VERTICAL - ORIGINAL HOLE, 3/24/2016 10:32:16 AM



Tubing Components							
Item Des	OD (in)	Wt (lb/ft)	Grade	Jts	Len (ft)	Btm (ftKB)	Btm (TVD) (ftKB)
Pump Seating Nipple	2 3/8	1.10	X	1	1.10	7,198.1	
Notched collar	2 3/8	0.00	X	1	0.40	7,198.5	

Perforation Data					
Zone	Bnch/St g	Entered Shot Total	Top (ftKB)	Btm (ftKB)	Date
NIOBRARA, ORIGINAL HOLE	A	12	6,896.00	6,912.00	2/17/1993
NIOBRARA, ORIGINAL HOLE	B	8	7,011.00	7,019.00	2/17/1993
NIOBRARA, ORIGINAL HOLE	C	12	7,088.00	7,111.00	2/17/1993
CODELL, ORIGINAL HOLE		40	7,216.00	7,226.00	11/7/1998
CODELL, ORIGINAL HOLE		40	7,218.00	7,228.00	2/17/1993

Stimulations & Treatments			
Date	Zone	Primary Job Type	
2/19/1993	CODELL, ORIGINAL HOLE	DRILLING/COMPLETION - ORIGINAL	
Technical Result		Tech Result Details	Tech Result Note
Failure		Screen-Out	
Comment			
SCREENED OUT			
Date	Zone	Primary Job Type	
2/21/1993	NIOBRARA, ORIGINAL HOLE	DRILLING/COMPLETION - ORIGINAL	
Technical Result		Tech Result Details	Tech Result Note
Comment			
Date	Zone	Primary Job Type	
11/11/1998	CODELL, ORIGINAL HOLE	RE-FRAC	
Technical Result		Tech Result Details	Tech Result Note
Comment			

Other In Hole				
Run Date	Des	OD (in)	Top (ftKB)	Btm (ftKB)

Logs			
Date	Type	Top, MD (ftKB)	Btm, MD (ftKB)
12/9/1992	COMPENSATED DENSITY	450.0	7,370.0
12/9/1992	INDUCTION	450.0	7,370.0
12/15/1992	CEMENT BOND	6,450.0	7,298.0
5/21/2013	GYRO	11.0	7,150.0