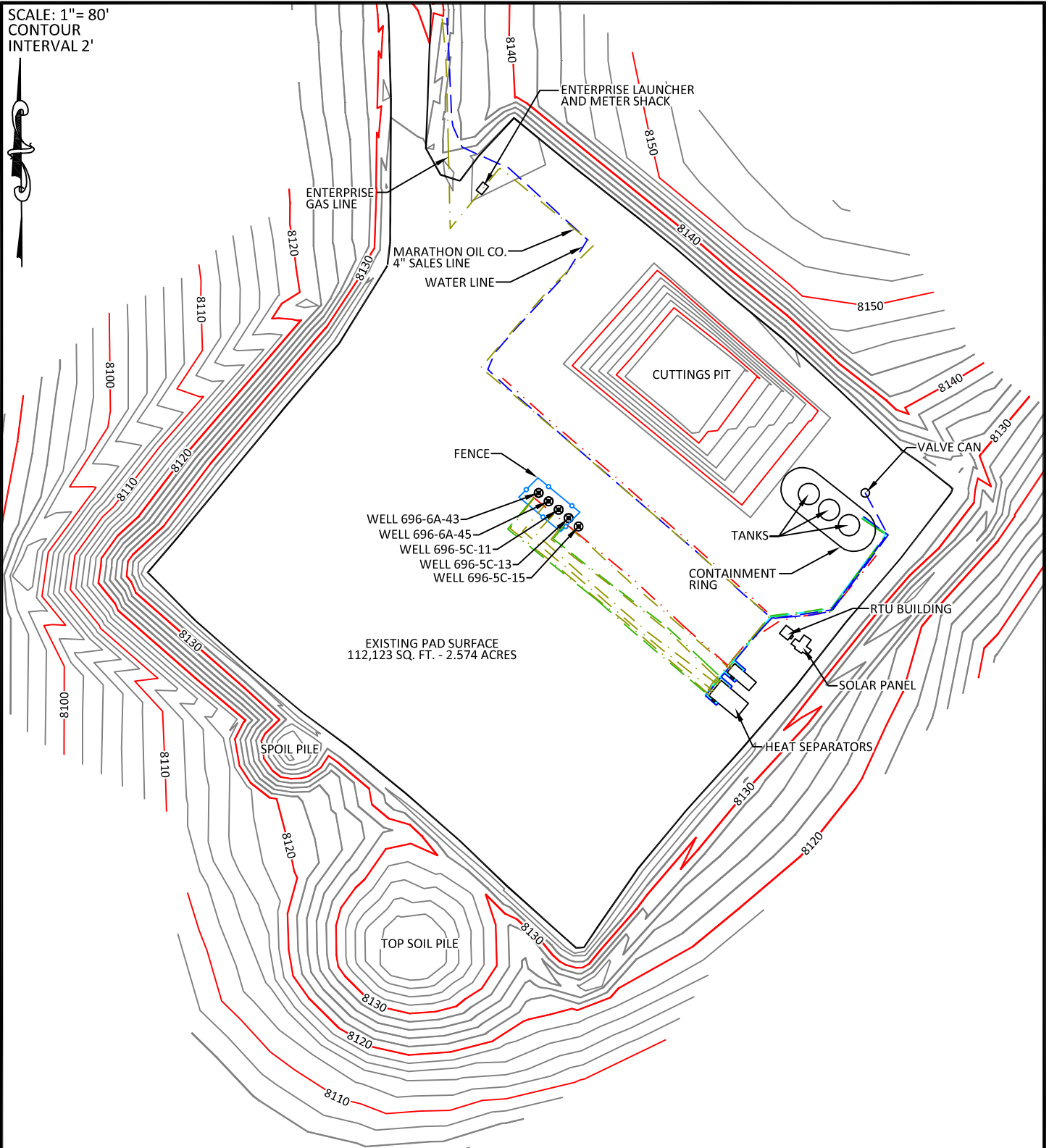


# PAD 696-5C

SCALE: 1" = 80'  
CONTOUR  
INTERVAL 2'



**CONFIDENTIALITY NOTES:**

The information contained in this plat is legally privileged and confidential information intended only for the use of the recipients. If you are not the intended recipients, you are hereby notified that any use, dissemination, distribution or copying of this information is strictly prohibited.



**WILLIAM H. SMITH  
& ASSOCIATES P.C.**

**SURVEYING CONSULTANTS**  
550 EAST SECOND NORTH PHONE: 307-875-3638  
GREEN RIVER, WY 307-875-3639  
www.whsmithpc.com

DRAWN BY: JSJ

CHECKED BY: WHD

JOB NO: 26099

PROJECT NO: N/A

REVISIONS:

**LEGEND**

- · — · GAS LINES
- · — · WATER LINES
- · — · CONDENSATE LINES
- · — · GLYCOL LINES
- · — · ELECTRIC LINES

**LOCATION:**

**PAD 696-5C**  
WITHIN LOTS 11 &  
12, SECTION 5,  
T6S, R96W, 6TH  
PM.  
GARFIELD COUNTY,  
COLORADO

**MARATHON OIL COMPANY**  
PO BOX 3128, HOUSTON TX, 77253  
5555 SAN FELIPE, HOUSTON TX, 77056

AS-BUILT PAD

SCALE: 1"=80'

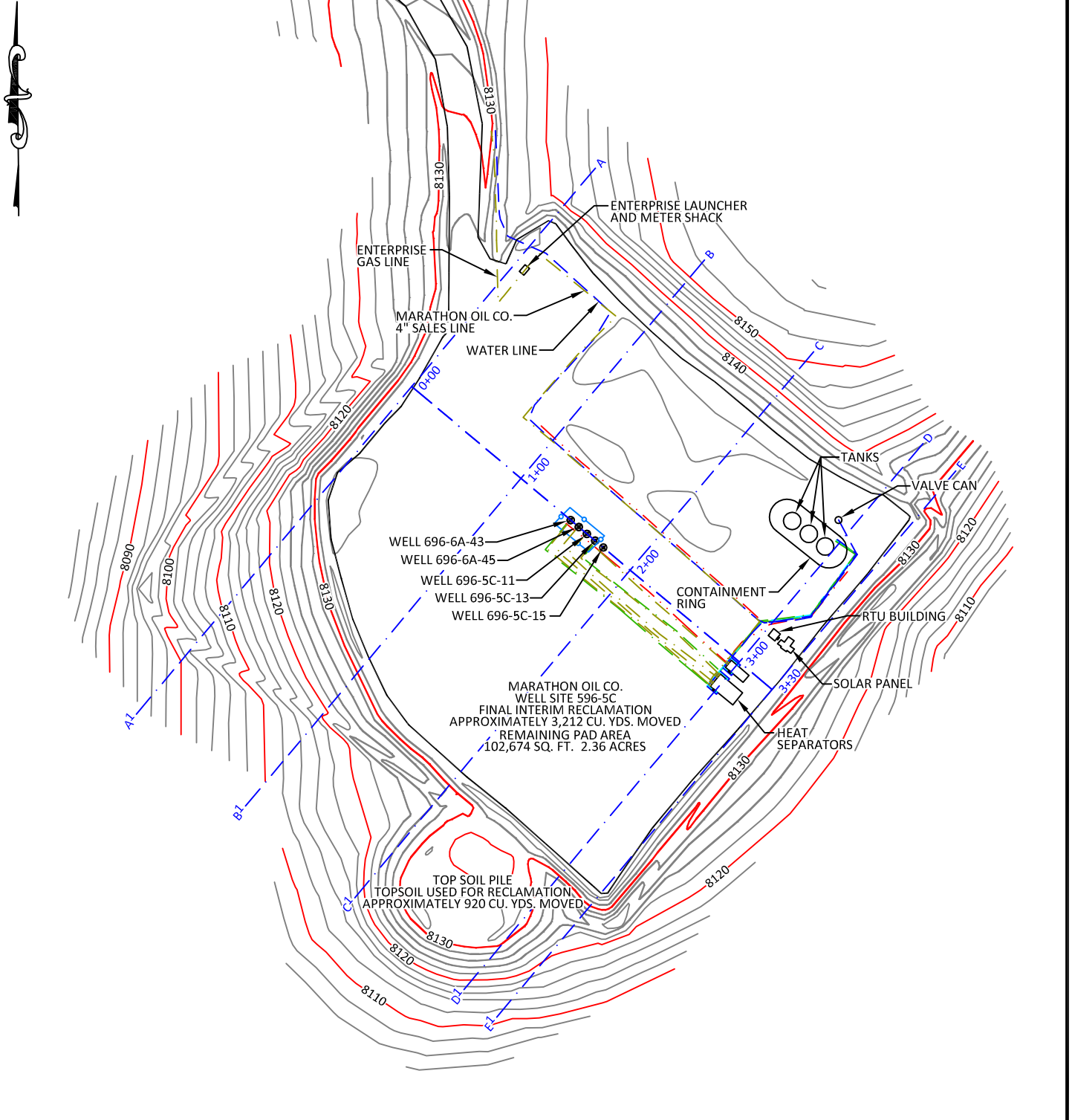
DATE: 09/26/2011

EXHIBIT "A"

SHEET 1 OF 3


# PAD 696-5C

SCALE: 1" = 100'  
CONTOUR  
INTERVAL 2'

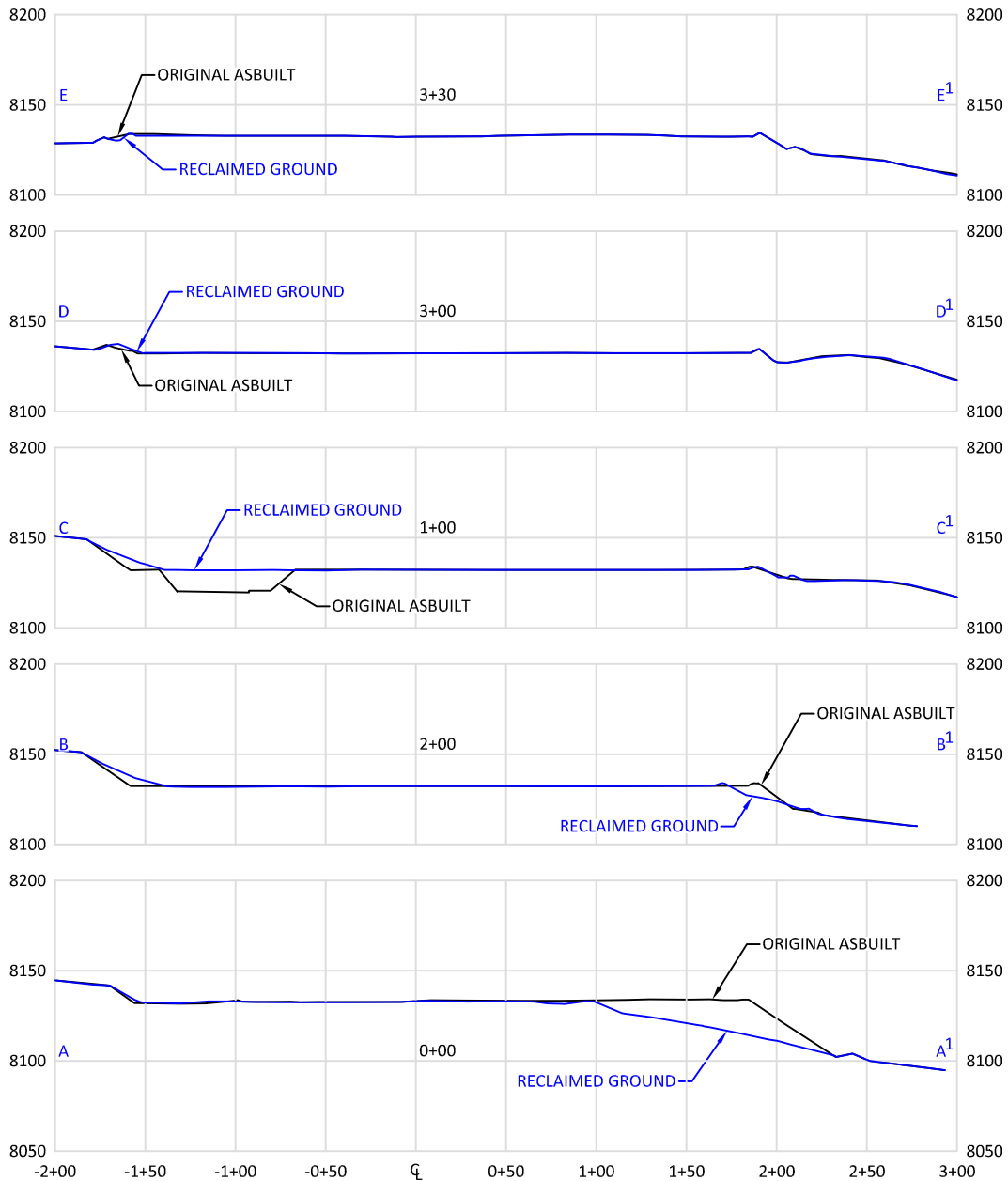


**CONFIDENTIALITY NOTES:**

The information contained in this plat is legally privileged and confidential information intended only for the use of the recipients. If you are not the intended recipients, you are hereby notified that any use, dissemination, distribution or copying of this information is strictly prohibited.

 <p><b>WILLIAM H. SMITH &amp; ASSOCIATES P.C.</b> SURVEYING CONSULTANTS 550 EAST SECOND NORTH    PHONE: 307-875-3638 GREEN RIVER, WY            307-875-3639 www.whsmithpc.com</p>	<p><b>DATA</b></p> <p>FINAL INTERIM RECLAMATION APPROXIMATELY 3,212 CU. YDS. MOVED</p> <p>TOPSOIL USED FOR RECLAMATION APPROXIMATELY 920 CU. YDS. MOVED</p> <p>REMAINING PAD AREA 102,674 SQ. FT., 2.36 ACRES</p>		<p><b>LOCATION:</b></p> <p><b>PAD 696-5C</b> WITHIN LOTS 11 &amp; 12, SECTION 5, T6S, R96W, 6TH PM. GARFIELD COUNTY, COLORADO</p>	<p><b>MARATHON OIL COMPANY</b> PO BOX 3128, HOUSTON TX, 77253 5555 SAN FELIPE, HOUSTON TX, 77056</p>
	<p>DRAWN BY: JSJ      CHECKED BY: WHD JOB NO: 26099      PROJECT NO: N/A REVISIONS:</p>	<p>INTERIM RECLAMATION ASBUILT</p> <p>SCALE: 1"=100'      EXHIBIT "A" DATE: 09/26/2011      SHEET 2 OF 3</p>		

# PAD 696-5C



**CONFIDENTIALITY NOTES:**

THE INFORMATION CONTAINED IN THIS PLOT IS LEGALLY PRIVILEGED AND CONFIDENTIAL INFORMATION INTENDED ONLY FOR THE USE OF THE RECIPIENTS. IF YOU ARE NOT THE INTENDED RECIPIENTS, YOU ARE HEREBY NOTIFIED THAT ANY USE, DISSEMINATION, DISTRIBUTION OR COPYING OF THIS INFORMATION IS STRICTLY PROHIBITED.



**WILLIAM H. SMITH  
& ASSOCIATES P.C.**

**SURVEYING CONSULTANTS**  
550 EAST SECOND NORTH PHONE: 307-875-3638  
GREEN RIVER, WY 307-875-3639  
www.whsmithpc.com

**LEGEND**

- ORIGINAL ASBUILT
- RECLAIMED GROUND

**LOCATION:**  
**PAD 696-5C**  
WITHIN LOTS 11 &  
12, SECTION 5,  
T6S, R96W, 6TH  
PM.  
GARFIELD COUNTY,  
COLORADO

**MARATHON OIL COMPANY**  
PO BOX 3128, HOUSTON TX, 77253  
5555 SAN FELIPE, HOUSTON TX, 77056

**INTERIM RECLAMATION ASBUILT  
CROSS SECTIONS**

DRAWN BY: JSJ

CHECKED BY: WHD

JOB NO: 26099

PROJECT NO: N/A

REVISIONS:

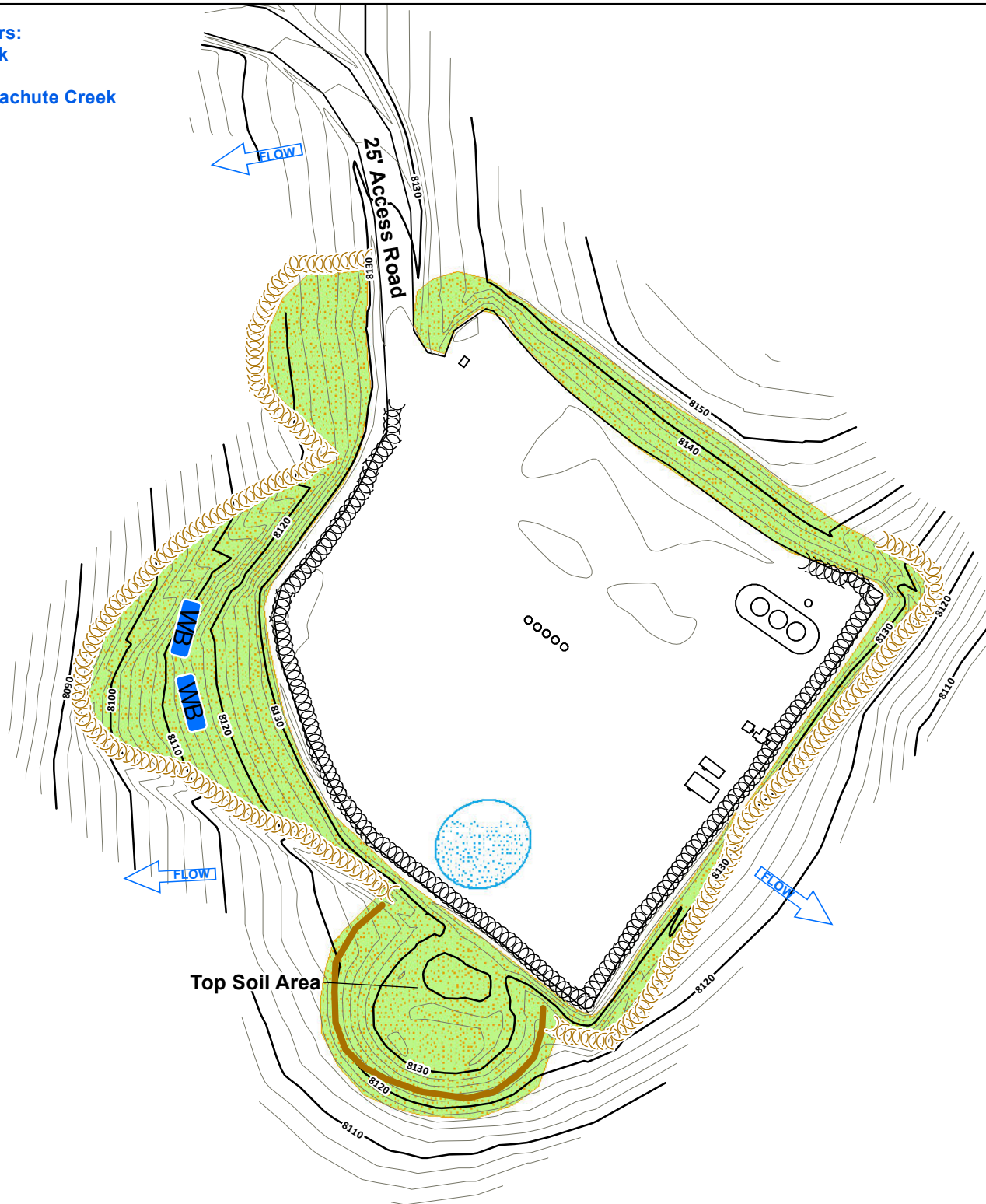
SCALE: 1"=100'H/100'V

EXHIBIT "A"

DATE: 09/26/2011

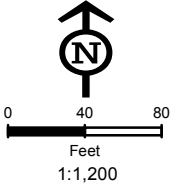
SHEET 3 OF 3

Receiving Waters:  
Parachute Creek  
4300 Feet East  
Tributary to Parachute Creek  
1000 Feet West



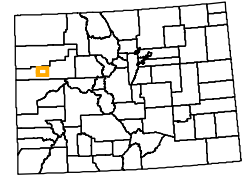
### Legend

- Culvert
- Sediment Trap
- Cattle Pond
- Water Bar
- Rip Rap
- Bales
- V-Ditch W/Check Dam
- Diversion Ditch
- Site Berm
- Toe Berm
- Fiber Roll
- Silt Fence
- Area To Be Reclaimed
- Fence
- Blanket
- Cut
- Fill
- Seeded & Hydromulched
- Soil Roughening
- Snow Storage
- Rip Rap (Large Area)



Not Present  
Asphalt Or Concrete Batch Plants

### Project Location



Garfield County

### Map Index Overview



## Pad Site 696-5C

Total Disturbed Area = 2.36 Acres

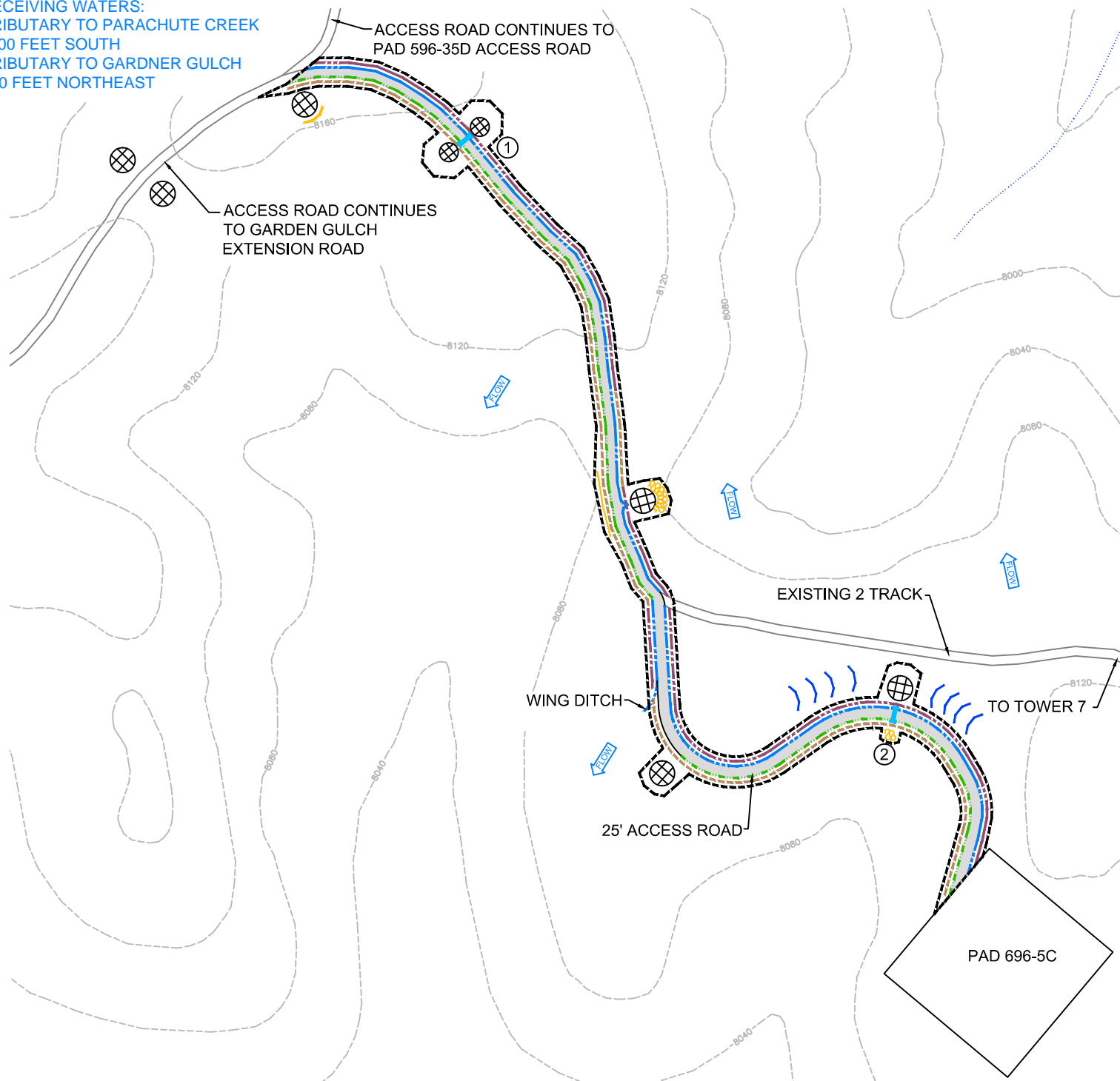
### MARATHON OIL

REVISED	BY:	COMMENT:
3/28/2012	BJB	TEMPLATE CREATION
3/28/2012	BJB	MAP CREATION
8/27/2012	BJB	BMP REVISION
9/24/2012	BJB	BMP REVISION



InterTech E&E, LLC  
bbergstrom@cbmainc.com  
M:\Projects\Marathon\Piceance\Projects\SWMP\2012\696\_5C\SWMP\_696\_5C\_20120924.mxd

RECEIVING WATERS:  
 TRIBUTARY TO PARACHUTE CREEK  
 1300 FEET SOUTH  
 TRIBUTARY TO GARDNER GULCH  
 750 FEET NORTHEAST



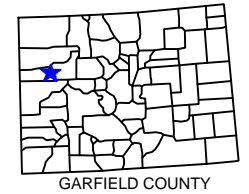
**LEGEND**

- CONSTRUCTION SITE BOUNDARY AND LIMITS OF DISTURBANCE (4.0 ACRES)
- AREA OF CUT
- AREA OF FILL
- SITE BERM
- CULVERT
- V-DITCH WITH CHECK DAM
- WATER BAR
- RIP RAP
- FIBER ROLL
- SEDIMENT BASIN
- STREAM
- BALES

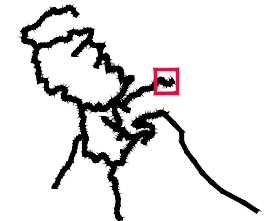
NOT PRESENT  
 ASPHALT OR CONCRETE BATCH PLANTS

COMMENTS:  
 CHECK DAMS TO BE REMOVED DURING WINTER.  
 WATER BARS WILL BE INSTALLED AND MAINTAINED AS NEEDED.

**PROJECT LOCATION**



**MAP INDEX OVERVIEW**



**ACCESS ROAD TO PAD 696-5C**

APPROXIMATE ROAD LENGTH = 2,790 LF

MARATHON OIL COMPANY

REVISED	BY:	COMMENT:
04/02/12	K.A.	BMP'S REVISED PER J.S.
05/08/12	K.A.	BMP'S REVISED PER B.B.
08/28/12	K.A.	BMP'S REVISED PER B.B.
09/24/12	K.A.	BMP'S REVISED PER B.B.

MAP MAINTAINED IN CAD