
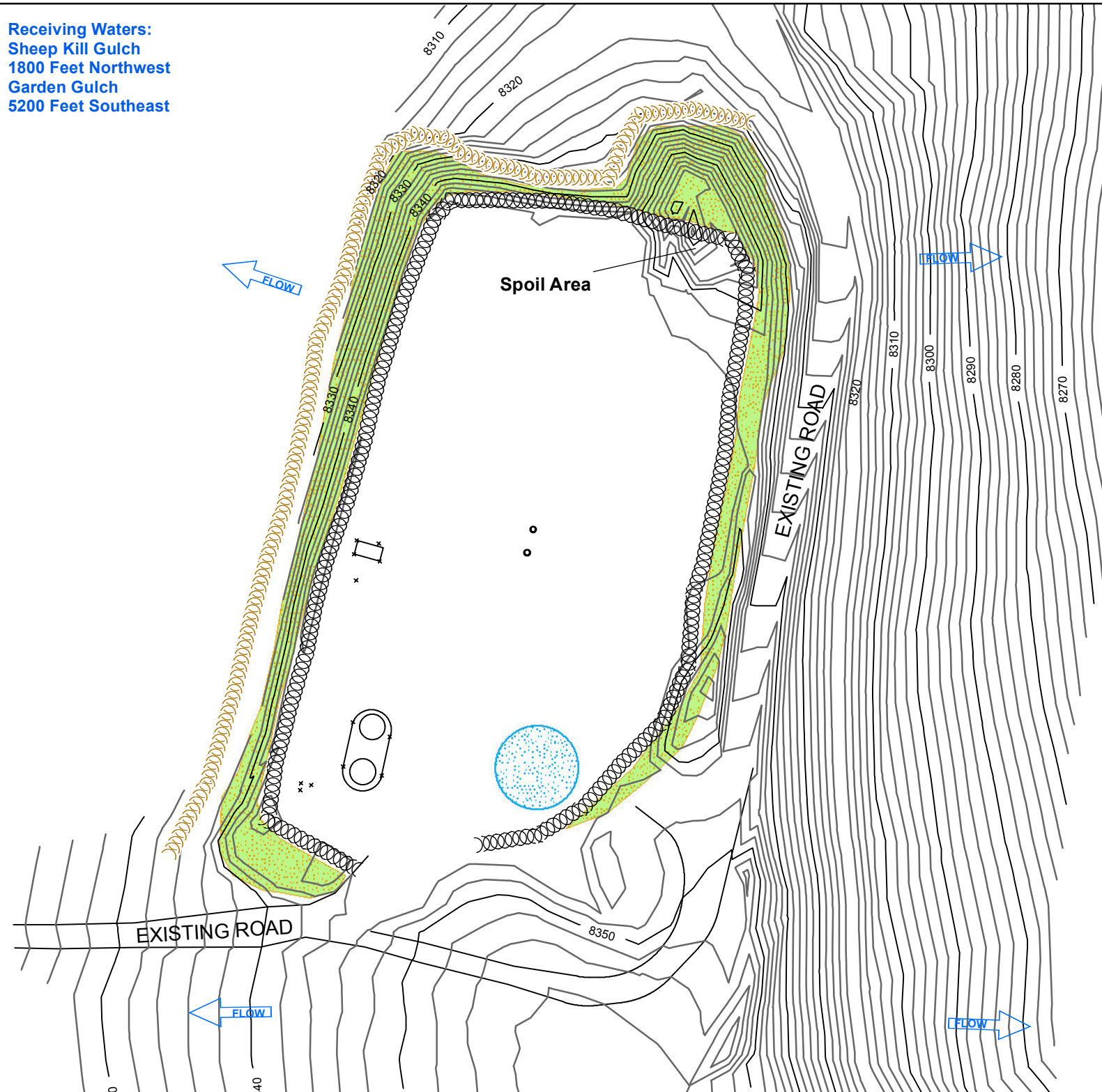


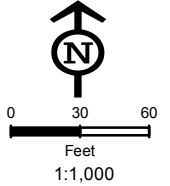
DESCRIPTION	SIZE	SCHEDULE	NOTE						
SALES LINE PIPE	4"	40	PIPE COATED SA106 GR B (SEAMLESS)	<div>4.5'</div>	PIPE DEPTH DERIVED FROM DATA COLLECTED FROM PIPE IN THE GROUND				
WATER DUMP LINE	3"	80	PIPE COATED SA106 GR B (SEAMLESS)	<div>4.5'</div>	PIPE DEPTH DERIVED FROM ABOVE GROUND DATA COLLECTED USING METROTECH DEVICE				
CONDENSATE DUMP LINE	2"	40	PIPE COATED SA106 GR B (SEAMLESS)	NOTE: PIPE DEPTHS MAY VARY FROM SHOWN DEPTHS BASED ON CONTINUED CONSTRUCTION & EROSION					
FLOW LINES	2"	80	PIPE COATED SA106 GR B (SEAMLESS)						
GLYCOL LINES	1"	80	PIPE – EXTERNALLY COATED						
<div><div></div><div><div>WILLIAM H. SMITH & ASSOCIATES P.C. SURVEYING CONSULTANTS</div><div>550 EAST SECOND NORTH PHONE: 307-875-3638 GREEN RIVER, WY 307-875-3639 www.whsmithpc.com</div></div></div>			<div><div><div>2" FLOW LINES</div><div>4" SALES LINE PIPE</div><div>GAS FLARE STACK</div><div>3" WATER DUMP LINE</div><div>WATER VALVE CAN</div><div>1" GLYCOL LINE</div><div>ELECTRICAL LINE</div><div>2" CONDENSATE D.L.</div></div></div>			LOCATION: 697-1X WITHIN THE SE/4 SECTION 1, SE/4 SECTION 6 T 6 N, R 96, 97 W, 6TH PM. GARFIELD COUNTY, COLORADO		MARATHON OIL COMPANY P.O. Box 3128 Houston, TX 77253 5555 San Felipe Houston, TX 77056	
						DRAWN BY: DTW		CHECKED BY: CED	
DATE: 07/02/2010		JOB NO: 26099		SHEET 1 OF 1					

Receiving Waters:
 Sheep Kill Gulch
 1800 Feet Northwest
 Garden Gulch
 5200 Feet Southeast



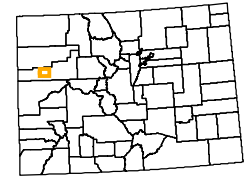
Legend

- Culvert
- Sediment Trap
- Cattle Pond
- Water Bar
- Rip Rap
- Bales
- V-Ditch W/Check Dam
- Diversion Ditch
- Site Berm
- Toe Berm
- Fiber Roll
- Silt Fence
- Area To Be Reclaimed
- Fence
- Blanket
- Cut
- Fill
- Seeded & Hydromulched
- Soil Roughening
- Snow Storage
- Rip Rap (Large Area)



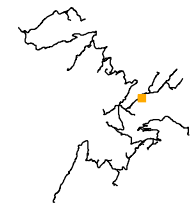
Not Present
 Asphalt Or Concrete Batch Plants

Project Location



Garfield County

Map Index Overview



Pad Site 697-1X

Total Disturbed Area = 3.68 Acres

MARATHON OIL

REVISED	BY:	COMMENT:
3/28/2012	BJB	TEMPLATE CREATION
3/28/2012	BJB	MAP CREATION
5/8/2012	BJB	BMP REVISION
8/27/2012	BJB	BMP REVISION



InterTech

InterTech E&E, LLC
 bbergstrom@cbmainc.com
 M:\Projects\Marathon\Picanceo\Projects\SWMP\2012\697_1X\SWMP_697_1X_20120827.mxd