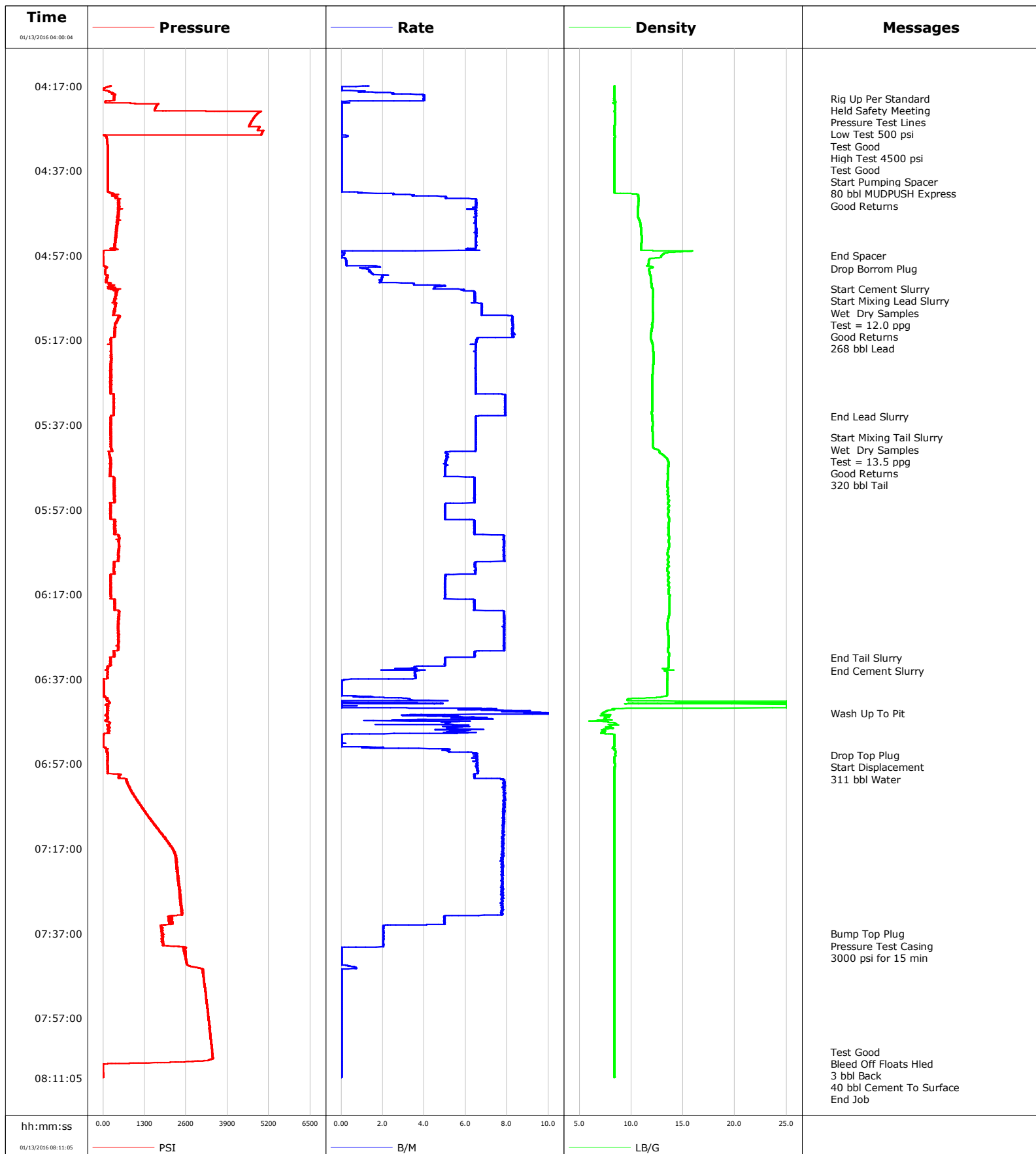


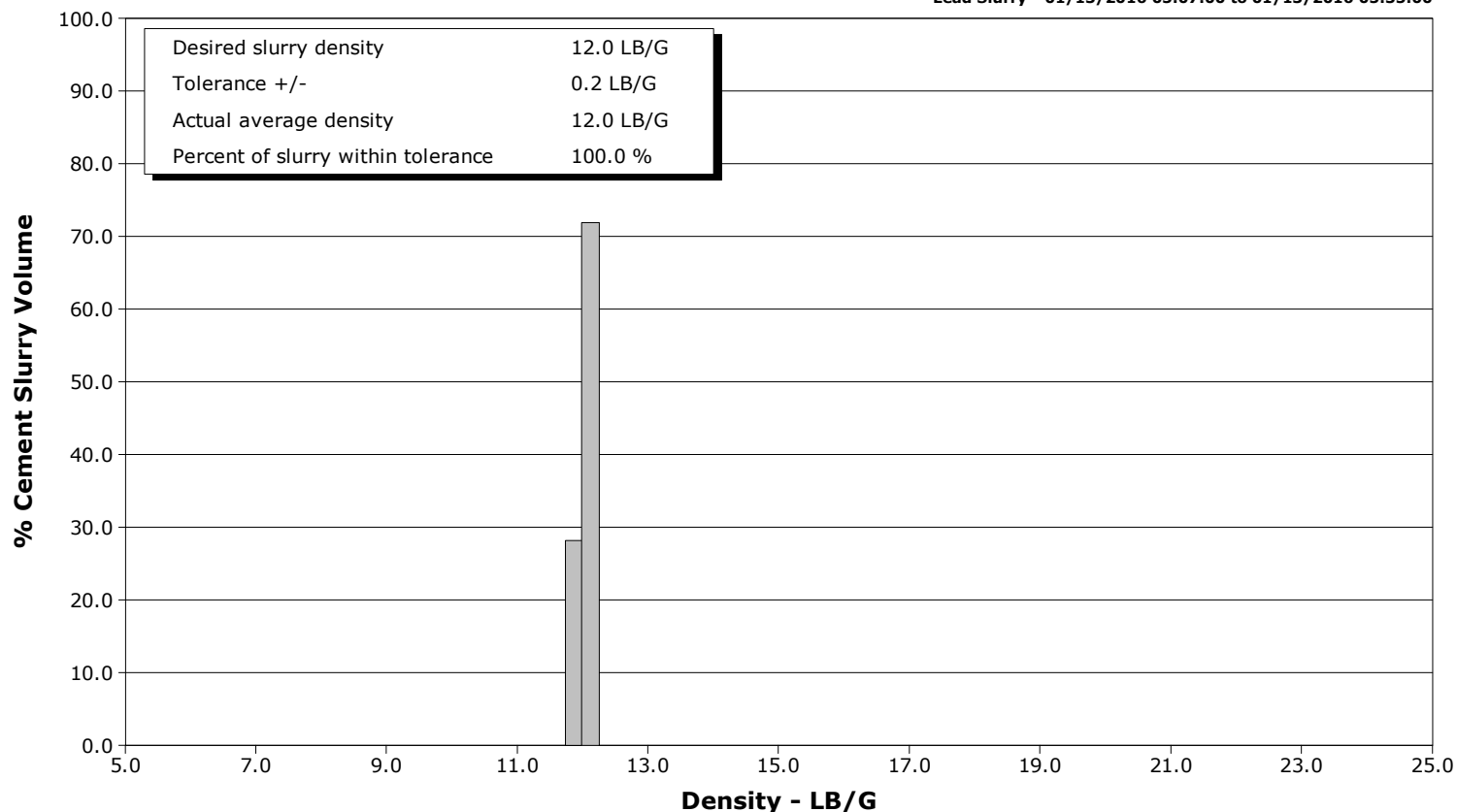
Well	Whisper Rock 3C-25HZ	Client	Anadarko
Field	Wattenberge	SIR No.	CWJN-01619
Engineer	Jordan Moreland / Taylor Baird	Job Type	5 1/2 Monobore
Country		Job Date	



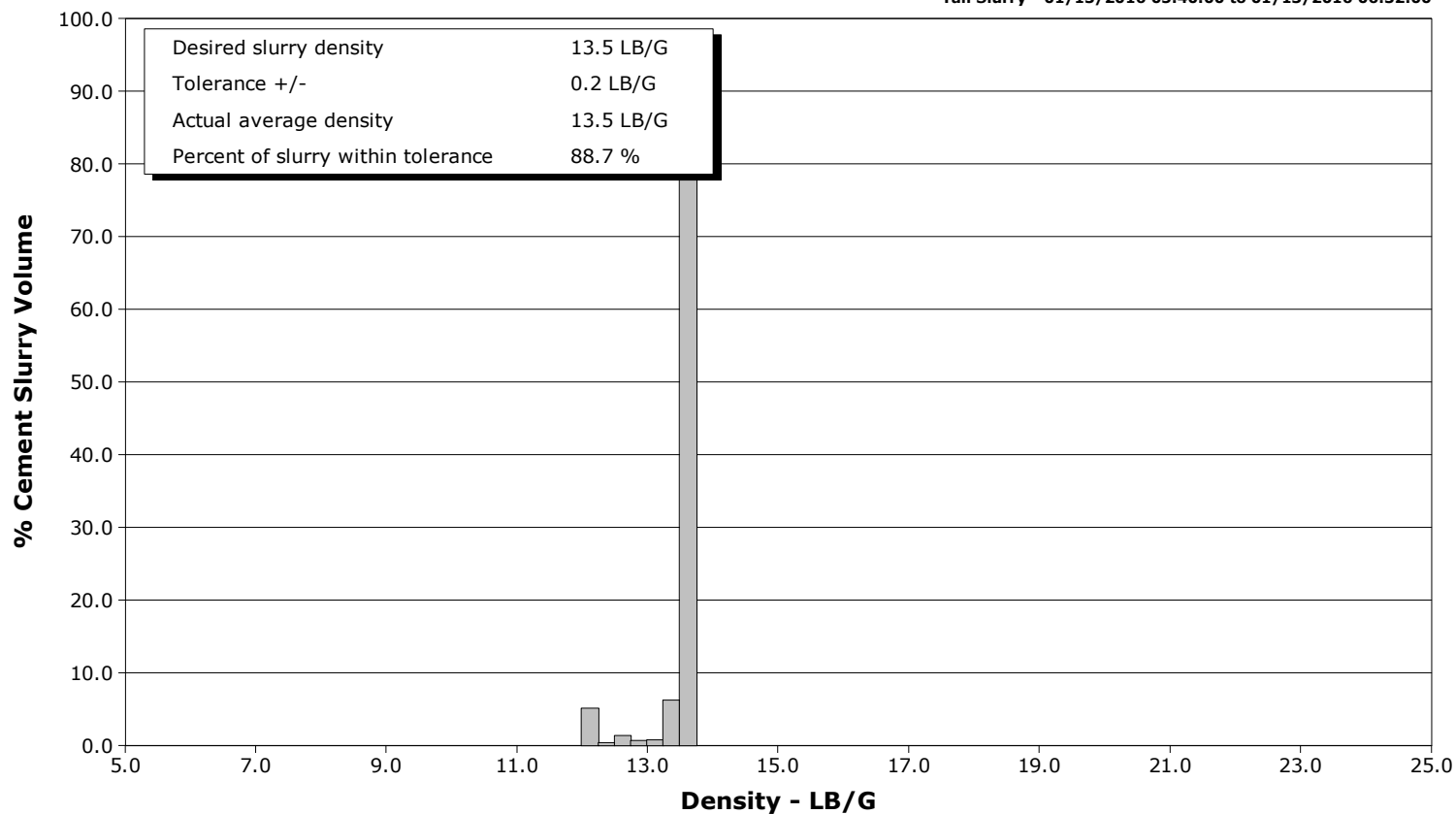
Well Whisper Rock 3C-25HZ
Field Wattenberge
Engineer Jordan Moreland / Taylor Baird
Country

Client Anadarko
SIR No. CWJN-01619
Job Type 5 1/2 Monobore
Job Date

Lead Slurry - 01/13/2016 05:07:00 to 01/13/2016 05:35:00



Tail Slurry - 01/13/2016 05:40:00 to 01/13/2016 06:32:00



Cementing Service Report

				Customer Anadarko				Job Number CWJN-01619			
Well Whisper Rock 3C-25HZ			Location (legal)			Schlumberger Location CWY			Job Start Jan/13/2016		
Field Wattenberge		Formation Name/Type		Deviation deg		Bit Size 8.5 in		Well MD ft		Well TVD ft	
County Weld		State/Province Colorado		BHP psi		BHST 234 degF		BHCT 233 degF		Pore Press. Gradient lb/gal	
Well Master 0631630649		API/UWI 05123413140000									
Rig Name Precision 460		Drilled For Oil		Service Via Land		Casing/Liner					
						Depth, ft		Size, in		Weight, lb/ft	
Offshore Zone		Well Class New		Well Type Development		13456.0		5.5		17.0	
						0.0		0.0		0.0	
Drilling Fluid Type		Max. Density lb/gal		Plastic Viscosity cP		Tubing/Drill Pipe					
						T/D		Depth, ft		Size, in	
Service Line Cementing		Job Type 5 1/2 Monobore									
Max. Allowed Tub. Press psi		Max. Allowed Ann. Press psi		WH Connection Double Cement head		Perforations/Open Hole					
						Top, ft		Bottom, ft		shot/ft	
						ft		ft			
						ft		ft			
						ft		ft			
						Treat Down Casing		Displacement 311.0 bbl		Packer Type	
										Packer Depth ft	
						Tubing Vol. bbl		Casing Vol. 313.0 bbl		Annular Vol. 562.0 bbl	
										Openhole Vol. 1032.0 bbl	
Casing/Tubing Secured <input checked="" type="checkbox"/>		1 Hole Vol. Circulated prior to Cement <input checked="" type="checkbox"/>		Casing Tools				Squeeze Job			
Lift Pressure psi				Shoe Type Float				Squeeze Type			
Pipe Rotated <input type="checkbox"/>		Pipe Reciprocated <input type="checkbox"/>		Shoe Depth 13456.0 ft				Tool Type			
No. Centralizers		Top Plugs 1		Bottom Plugs 1		Stage Tool Type				Tool Depth ft	
Cement Head Type Double				Stage Tool Depth ft				Tail Pipe Size in			
Job Scheduled For Jan/13/2016		Arrived on Location Jan/13/2016		Leave Location Jan/13/2016		Collar Type Float				Tail Pipe Depth ft	
						Collar Depth 13362.0 ft				Sqz. Total Vol. bbl	
Date	Time 24-hr clock	Treating Pressure PSI	Flow Rate B/M	Density LB/G	Volume BBL	Message					
01/13/2016	04:00:04	-0	0.0	0.01	0.0						
01/13/2016	04:02:04	-1	0.0	0.01	0.0						
01/13/2016	04:04:04	-1	0.0	0.01	0.0						
01/13/2016	04:06:04	31	2.4	8.12	3.1						
01/13/2016	04:08:04	56	3.2	8.39	8.7						
01/13/2016	04:10:04	211	4.0	8.39	14.8						
01/13/2016	04:12:04	104	3.1	8.39	23.8						
01/13/2016	04:14:04	14	0.0	8.39	31.0						
01/13/2016	04:16:04	-1	0.0	8.39	31.0						
01/13/2016	04:18:04	78	0.0	8.39	1.2						
01/13/2016	04:20:00	340	4.0	8.34	6.6	Rig Up Per Standard					
01/13/2016	04:20:04	334	4.0	8.33	6.9						
01/13/2016	04:22:04	1648	0.0	8.41	9.0						
01/13/2016	04:24:04	4775	0.0	8.40	9.0						
01/13/2016	04:26:04	4604	0.0	8.40	9.0						
01/13/2016	04:28:04	4981	0.0	8.40	9.0						
01/13/2016	04:30:04	122	0.0	8.39	9.1						
01/13/2016	04:32:04	154	0.0	8.39	9.1						
01/13/2016	04:34:04	153	0.0	8.39	9.1						
01/13/2016	04:36:04	152	0.0	8.39	9.1						
01/13/2016	04:37:00	152	0.0	8.39	9.1	Start Pumping Spacer					

Well			Field	Job Start		Customer		Job Number	
Whisper Rock 3C-25HZ			Wattenberge		Jan/13/2016		Anadarko		CWJN-01619
Date	Time 24-hr clock	Treating Pressure PSI	Flow Rate B/M	Density LB/G	Volume BBL	Message			
01/13/2016	04:38:04	151	0.0	8.39	9.1				
01/13/2016	04:39:00	151	0.0	8.39	9.1	Good Returns			
01/13/2016	04:40:04	153	0.0	8.39	9.1				
01/13/2016	04:42:04	194	0.4	8.39	9.1				
01/13/2016	04:44:04	499	6.5	10.71	17.2				
01/13/2016	04:46:04	465	6.3	10.64	30.2				
01/13/2016	04:48:04	464	6.5	10.66	43.1				
01/13/2016	04:50:04	448	6.5	10.91	56.1				
01/13/2016	04:52:04	407	6.5	10.98	69.1				
01/13/2016	04:54:04	386	6.5	10.98	82.1				
01/13/2016	04:56:04	5	0.0	15.46	94.0				
01/13/2016	04:57:00	-1	0.0	12.94	94.1	End Spacer			
01/13/2016	04:58:04	1	0.2	11.71	94.2				
01/13/2016	05:00:00	93	1.0	11.90	95.3	Drop Borrom Plug			
01/13/2016	05:00:04	96	1.0	11.80	95.4				
01/13/2016	05:02:04	124	2.0	11.86	98.4				
01/13/2016	05:04:04	342	4.8	11.98	103.2				
01/13/2016	05:05:00	401	5.6	12.08	107.5	Start Cement Slurry			
01/13/2016	05:06:04	440	6.4	12.11	114.2				
01/13/2016	05:07:00	393	6.4	12.08	120.2	Start Mixing Lead Slurry			
01/13/2016	05:08:04	322	6.4	12.07	127.0				
01/13/2016	05:10:00	333	6.8	12.06	140.0	Wet Dry Samples			
01/13/2016	05:10:04	357	6.8	12.06	140.5				
01/13/2016	05:11:00	319	6.8	12.10	146.8	Test = 12.0 ppg			
01/13/2016	05:12:00	477	8.2	12.08	154.8	Good Returns			
01/13/2016	05:12:04	461	8.2	12.08	155.4				
01/13/2016	05:13:00	396	8.3	12.03	163.1	268 bbl Lead			
01/13/2016	05:14:04	367	8.3	11.99	171.9				
01/13/2016	05:16:04	360	8.3	11.89	188.4				
01/13/2016	05:18:04	243	6.5	12.04	202.0				
01/13/2016	05:20:04	235	6.5	12.14	215.0				
01/13/2016	05:22:04	245	6.5	12.15	227.9				
01/13/2016	05:24:04	259	6.5	12.07	240.9				
01/13/2016	05:26:04	244	6.5	12.00	253.8				
01/13/2016	05:28:04	237	6.5	12.00	266.8				
01/13/2016	05:30:04	331	7.9	12.01	280.2				
01/13/2016	05:32:04	333	7.9	12.02	296.0				
01/13/2016	05:34:04	323	7.9	11.98	311.8				
01/13/2016	05:35:00	245	6.5	12.01	319.0	End Lead Slurry			
01/13/2016	05:36:04	244	6.5	12.03	325.9				
01/13/2016	05:38:04	248	6.5	12.01	338.9				
01/13/2016	05:40:00	229	6.5	12.08	351.4	Start Mixing Tail Slurry			
01/13/2016	05:40:04	239	6.5	12.08	351.9				
01/13/2016	05:41:00	242	6.5	12.09	357.9	Wet Dry Samples			
01/13/2016	05:42:00	235	6.5	12.07	364.4	Test = 13.5 ppg			
01/13/2016	05:42:04	253	6.5	12.08	364.8				
01/13/2016	05:43:00	266	6.5	12.63	370.9	Good Returns			
01/13/2016	05:44:00	195	5.2	13.00	376.4	320 bbl Tail			
01/13/2016	05:44:04	189	5.1	13.03	376.7				
01/13/2016	05:46:04	251	5.0	13.60	386.8				
01/13/2016	05:48:04	223	5.0	13.52	396.9				
01/13/2016	05:50:04	339	6.4	13.52	408.0				
01/13/2016	05:52:04	340	6.4	13.54	420.8				
01/13/2016	05:54:04	347	6.4	13.56	433.7				

Well			Field	Job Start		Customer		Job Number	
Whisper Rock 3C-25HZ			Wattenberge		Jan/13/2016		Anadarko		CWJN-01619
Date	Time 24-hr clock	Treating Pressure PSI	Flow Rate B/M	Density LB/G	Volume BBL	Message			
01/13/2016	05:58:04	222	5.0	13.55	455.8				
01/13/2016	06:00:04	363	6.4	13.61	466.7				
01/13/2016	06:02:04	354	6.4	13.61	479.6				
01/13/2016	06:04:04	486	7.8	13.62	494.0				
01/13/2016	06:06:04	499	7.8	13.61	509.6				
01/13/2016	06:08:04	493	7.8	13.59	525.3				
01/13/2016	06:10:04	338	6.5	13.52	540.0				
01/13/2016	06:12:04	367	6.5	13.58	552.9				
01/13/2016	06:14:04	220	5.0	13.59	563.3				
01/13/2016	06:16:04	253	5.0	13.61	573.3				
01/13/2016	06:18:04	239	5.0	13.67	583.3				
01/13/2016	06:20:04	356	6.4	13.69	596.0				
01/13/2016	06:22:04	507	7.8	13.62	610.5				
01/13/2016	06:24:04	483	7.9	13.50	626.2				
01/13/2016	06:26:04	481	7.8	13.54	641.9				
01/13/2016	06:28:04	503	7.8	13.58	657.6				
01/13/2016	06:30:04	468	7.9	13.56	673.3				
01/13/2016	06:32:00	227	5.0	13.60	685.9	End Tail Slurry			
01/13/2016	06:32:04	235	5.0	13.60	686.3				
01/13/2016	06:34:04	159	3.6	13.59	696.1				
01/13/2016	06:35:00	137	3.7	13.22	699.3	End Cement Slurry			
01/13/2016	06:36:04	147	3.6	13.48	703.1				
01/13/2016	06:38:04	19	0.0	13.44	706.6				
01/13/2016	06:40:04	19	0.0	13.43	706.6				
01/13/2016	06:42:04	155	4.2	9.63	709.2				
01/13/2016	06:44:04	140	7.5	8.24	712.2				
01/13/2016	06:45:00	132	10.3	7.29	719.7	Wash Up To Pit			
01/13/2016	06:46:04	120	6.1	7.52	726.6				
01/13/2016	06:48:04	174	5.7	7.99	736.6				
01/13/2016	06:50:04	21	0.0	8.32	746.9				
01/13/2016	06:52:04	4	0.0	8.39	746.9				
01/13/2016	06:54:04	102	5.2	8.45	750.9				
01/13/2016	06:55:00	146	6.5	8.45	756.7	Drop Top Plug			
01/13/2016	06:56:00	144	6.6	8.39	763.2	Start Displacement			
01/13/2016	06:56:04	144	6.5	8.39	763.6				
01/13/2016	06:57:00	133	6.5	8.41	769.7	311 bbl Water			
01/13/2016	06:58:04	136	6.6	8.40	776.7				
01/13/2016	07:00:04	504	6.4	8.39	789.7				
01/13/2016	07:02:04	813	7.9	8.39	804.8				
01/13/2016	07:04:04	921	7.9	8.39	820.5				
01/13/2016	07:06:04	1110	7.8	8.39	836.2				
01/13/2016	07:08:04	1289	7.9	8.38	851.9				
01/13/2016	07:10:04	1464	7.9	8.38	867.6				
01/13/2016	07:12:04	1698	7.8	8.39	883.2				
01/13/2016	07:14:04	1895	7.8	8.38	898.9				
01/13/2016	07:16:04	2091	7.8	8.38	914.4				
01/13/2016	07:18:04	2244	7.8	8.38	930.0				
01/13/2016	07:20:04	2283	7.8	8.38	945.6				
01/13/2016	07:22:04	2325	7.8	8.38	961.1				
01/13/2016	07:24:04	2360	7.8	8.38	976.6				
01/13/2016	07:26:04	2378	7.8	8.38	992.1				
01/13/2016	07:28:04	2404	7.8	8.38	1007.7				
01/13/2016	07:32:04	2462	7.7	8.38	1038.7				
01/13/2016	07:34:04	2087	5.0	8.38	1050.7				

Well Whisper Rock 3C-25HZ			Field Wattenberge		Job Start Jan/13/2016		Customer Anadarko		Job Number CWJN-01619	
Date	Time 24-hr clock	Treating Pressure PSI		Flow Rate B/M	Density LB/G		Volume BBL		Message	
01/13/2016	07:37:00	1865		2.0	8.38		1059.5		Bump Top Plug	
01/13/2016	07:38:04	1872		2.0	8.38		1061.7			
01/13/2016	07:40:00	2041		2.0	8.38		1065.6		Pressure Test Casing	
01/13/2016	07:40:04	2213		2.0	8.38		1065.7			
01/13/2016	07:41:00	2549		0.0	8.38		1066.2		3000 psi for 15 min	
01/13/2016	07:42:04	2561		0.0	8.38		1066.2			
01/13/2016	07:44:04	2625		0.0	8.39		1066.2			
01/13/2016	07:46:04	3121		0.0	8.39		1066.7			
01/13/2016	07:48:04	3158		0.0	8.39		1066.7			
01/13/2016	07:50:04	3194		0.0	8.39		1066.7			
01/13/2016	07:52:04	3225		0.0	8.39		1066.7			
01/13/2016	07:54:04	3260		0.0	8.39		1066.7			
01/13/2016	07:56:04	3289		0.0	8.39		1066.7			
01/13/2016	07:58:04	3319		0.0	8.39		1066.7			
01/13/2016	08:00:04	3346		0.0	8.39		1066.7			
01/13/2016	08:02:04	3373		0.0	8.39		1066.7			
01/13/2016	08:04:04	3404		0.0	8.39		1066.7			
01/13/2016	08:05:00	3418		0.0	8.39		1066.7		Test Good	
01/13/2016	08:06:00	3430		0.0	8.39		1066.7		Bleed Off Floats Hled	
01/13/2016	08:06:04	3430		0.0	8.39		1066.7			
01/13/2016	08:07:00	3292		0.0	8.39		1066.7		3 bbl Back	
01/13/2016	08:08:00	-13		0.0	8.39		1066.7		40 bbl Cement To Surface	
01/13/2016	08:08:04	-7		0.0	8.39		1066.7			
01/13/2016	08:09:00	-5		0.0	8.39		1066.7		End Job	

Post Job Summary

Average Pump Rates, bbl/min					Volume of Fluid Injected, bbl						
Slurry	N2	Mud	Maximum Rate		Total Slurry	Mud	Spacer	N2			
Treating Pressure Summary, psi					Breakdown Fluid						
Maximum	Final 0	Average	Bump Plug to	Breakdown	Type	Volume bbl		Density lb/gal			
Avg. N2 Percent %	Designed Slurry Volume 0.0 bbl		Displacement bbl	Mix Water Temp 70 degF	Cement Circulated to Surface? <input checked="" type="checkbox"/>		Volume bbl				
					Washed Thru Perfs <input type="checkbox"/>		To ft				
Customer or Authorized Representative			Schlumberger Supervisor Jordan Moreland / Taylor Baird			Circulation Lost <input type="checkbox"/>	Job Completed <input checked="" type="checkbox"/>				
						-	-				