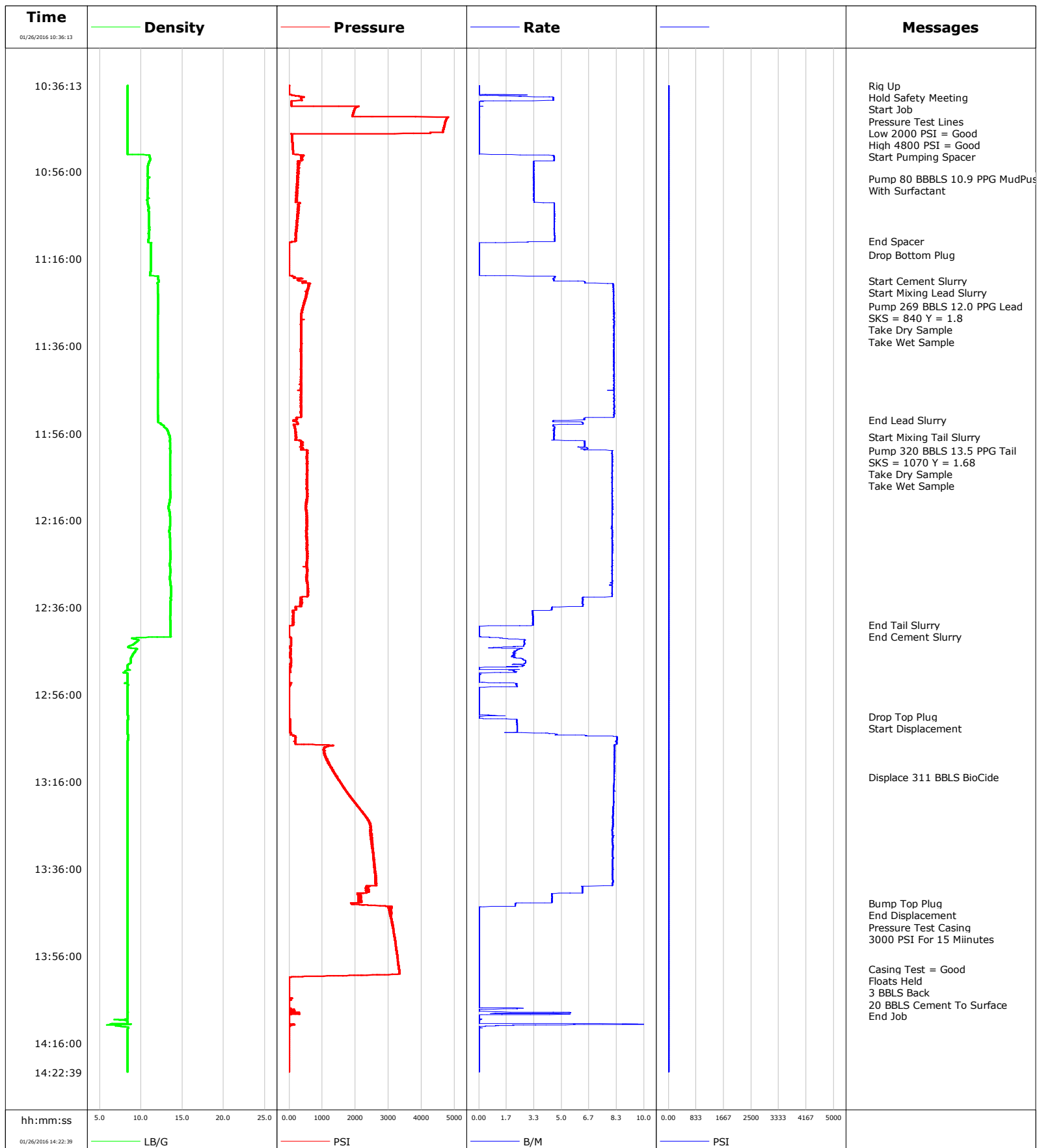


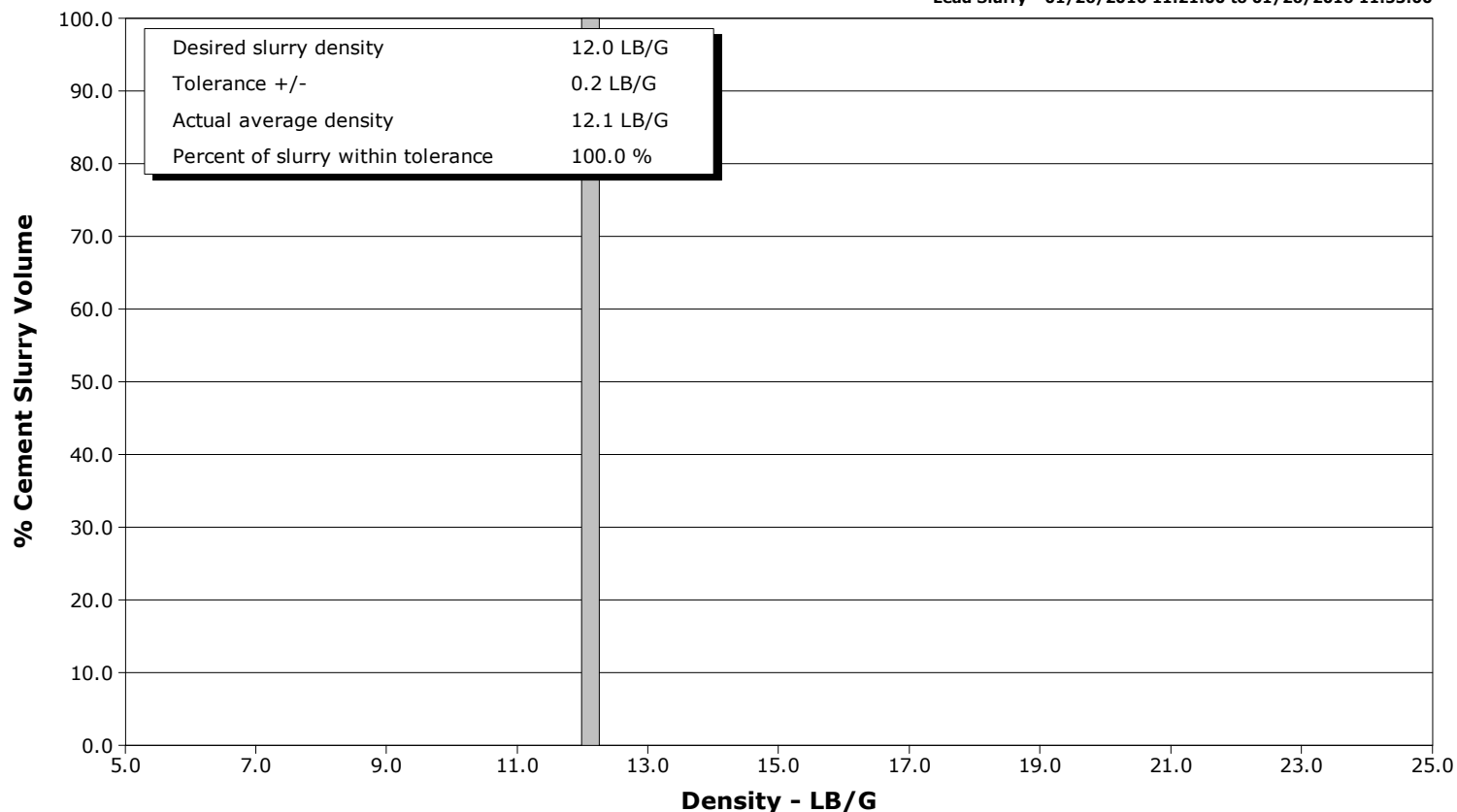
<b>Well</b>	Whisper Rock 7N-25HZ	<b>Client</b>	Anadarko
<b>Field</b>	Wattenberg	<b>SIR No.</b>	2245631
<b>Engineer</b>	Conley Jensen/ Ken Sovereign	<b>Job Type</b>	5.5" Monobore
<b>Country</b>	United States	<b>Job Date</b>	01-26-2016



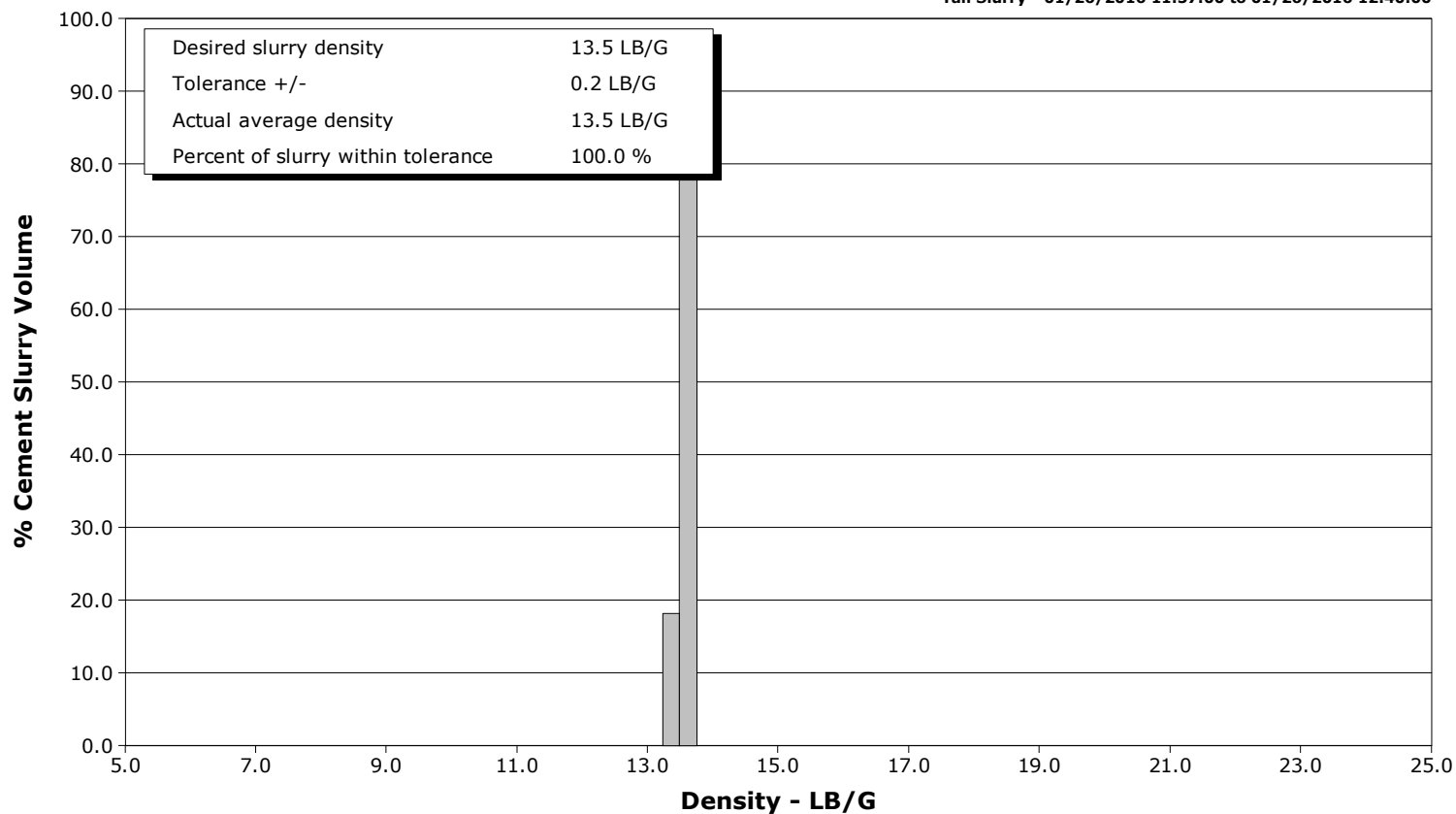
**Well** Whisper Rock 7N-25HZ  
**Field** Wattenberg  
**Engineer** Conley Jensen/ Ken Sovereign  
**Country** United States

**Client** Anadarko  
**SIR No.** 2245631  
**Job Type** 5.5" Monobore  
**Job Date** 01-26-2016

**Lead Slurry - 01/26/2016 11:21:00 to 01/26/2016 11:53:00**



**Tail Slurry - 01/26/2016 11:57:00 to 01/26/2016 12:40:00**



# Cementing Service Report

				Customer Anadarko			Job Number 2245631										
Well Whisper Rock 7N-25HZ 7N-25HZ			Location (legal) CWY			Schlumberger Location CWY			Job Start Jan/26/2016								
Field Wattenberg		Formation Name/Type			Deviation deg		Bit Size 8.5 in		Well MD 13487.0 ft		Well TVD 7286.0 ft						
County Weld		State/Province Colorado			BHP psi		BHST 232 degF		BHCT 228 degF		Pore Press. Gradient lb/gal						
Well Master 0631630646		API/UWI 05123413110000															
Rig Name Precision 460		Drilled For Oil		Service Via Land		Casing/ Liner											
						Depth, ft		Size, in		Weight, lb/ft		Grade		Thread			
Offshore Zone		Well Class New		Well Type Development		1903.0		9.6		36.0		J55		8RD			
						13487.0		5.5		17.0		P110		8RD			
Drilling Fluid Type		Max. Density lb/gal		Plastic Viscosity cP		Tubing/Drill Pipe											
						T/D		Depth, ft		Size, in		Weight, lb/ft		Grade		Thread	
Service Line Cementing		Job Type 5.5" Monobore															
Max. Allowed Tub. Press psi		Max. Allowed Ann. Press psi		WH Connection Double Cement head		Perforations/Open Hole											
						Top, ft		Bottom, ft		shot/ft		No. of Shots		Total Interval			
Service Instructions Perform 5.5" Monobore Per Proposal Design.						ft		ft						ft			
						ft		ft						Diameter			
						ft		ft						in			
		Treat Down Casing		Displacement 311.0 bbl		Packer Type		Packer Depth ft									
		Tubing Vol. bbl		Casing Vol. 313.0 bbl		Annular Vol. 564.0 bbl		Openhole Vol. 891.0 bbl									
Casing/Tubing Secured <input checked="" type="checkbox"/>		1 Hole Vol. Circulated prior to Cement <input checked="" type="checkbox"/>				Casing Tools				Squeeze Job							
Lift Pressure psi						Shoe Type Guide				Squeeze Type							
Pipe Rotated <input type="checkbox"/>		Pipe Reciprocated <input type="checkbox"/>				Shoe Depth 13487.0 ft				Tool Type							
No. Centralizers		Top Plugs 1		Bottom Plugs 2		Stage Tool Type				Tool Depth ft							
Cement Head Type Double						Stage Tool Depth ft				Tail Pipe Size in							
Job Scheduled For Jan/25/2016 23:30		Arrived on Location Jan/25/2016 23:30		Leave Location Jan/26/2016 15:00		Collar Type Float				Tail Pipe Depth ft							
						Collar Depth 13394.0 ft				Sqz. Total Vol. bbl							
Date	Time 24-hr clock	Treating Pressure PSI	Flow Rate B/M	Density LB/G	Volume BBL	Message											
01/26/2016	10:36:13	17	0.0	8.38	0.0	Started Acquisition											
01/26/2016	10:36:14	17	0.0	8.38	0.0	Rig Up											
01/26/2016	10:36:24	14	0.0	8.38	0.0	Start Job											
01/26/2016	10:36:28	13	0.0	8.38	0.0	Pressure Test Lines											
01/26/2016	10:37:43	15	0.0	8.38	0.0												
01/26/2016	10:39:13	379	4.5	8.37	2.4												
01/26/2016	10:40:00	81	0.0	8.37	4.9	Low 2000 PSI = Good											
01/26/2016	10:40:43	78	0.0	8.37	4.9												
01/26/2016	10:42:13	1989	0.0	8.37	5.0												
01/26/2016	10:43:00	1959	0.0	8.37	5.0	High 4800 PSI = Good											
01/26/2016	10:43:43	4831	0.0	8.37	5.0												
01/26/2016	10:45:13	4758	0.0	8.37	5.0												
01/26/2016	10:46:43	4710	0.0	8.37	5.0												
01/26/2016	10:48:13	102	0.0	8.37	5.0												
01/26/2016	10:49:43	116	0.0	8.37	0.0												
01/26/2016	10:51:13	130	0.0	8.37	0.0												
01/26/2016	10:52:00	136	0.0	8.37	0.0	Start Pumping Spacer											
01/26/2016	10:52:43	422	4.5	11.08	2.5												
01/26/2016	10:54:13	289	3.3	10.92	8.6												
01/26/2016	10:55:43	292	3.3	10.86	13.6												
01/26/2016	10:57:13	286	3.3	10.87	18.6												

Well			Field		Job Start		Customer		Job Number	
Whisper Rock 7N-25HZ 7N-25HZ			Wattenberg		Jan/26/2016		Anadarko		2245631	
Date	Time 24-hr clock	Treating Pressure PSI	Flow Rate B/M	Density LB/G	Volume BBL	Message				
01/26/2016	10:57:53	290	3.3	10.82	20.8	With Surfactant				
01/26/2016	10:58:43	271	3.3	10.85	23.5					
01/26/2016	11:00:13	249	3.3	10.78	28.5					
01/26/2016	11:01:43	252	3.3	10.76	33.5					
01/26/2016	11:03:13	328	4.6	10.79	38.6					
01/26/2016	11:04:43	281	4.6	10.92	45.5					
01/26/2016	11:06:13	283	4.6	10.96	52.3					
01/26/2016	11:07:43	278	4.6	10.96	59.2					
01/26/2016	11:09:13	253	4.6	10.99	66.0					
01/26/2016	11:10:43	232	4.6	10.96	72.9					
01/26/2016	11:12:00	225	4.6	10.88	78.8	End Spacer				
01/26/2016	11:12:13	98	3.0	10.87	79.6					
01/26/2016	11:13:43	25	0.0	11.18	79.9					
01/26/2016	11:15:00	24	0.0	11.17	79.9	Drop Bottom Plug				
01/26/2016	11:15:13	25	0.0	11.17	79.9					
01/26/2016	11:16:43	24	0.0	11.17	79.9					
01/26/2016	11:18:13	24	0.0	11.17	0.0					
01/26/2016	11:19:43	25	0.0	11.16	0.0					
01/26/2016	11:21:00	301	4.5	12.15	4.8	Start Cement Slurry				
01/26/2016	11:21:13	556	6.4	12.17	5.9					
01/26/2016	11:22:43	610	8.1	12.04	17.4					
01/26/2016	11:24:13	553	8.2	12.07	29.6					
01/26/2016	11:25:43	496	8.2	12.08	41.8					
01/26/2016	11:26:52	483	8.2	12.07	51.2	Pump 269 BBLS 12.0 PPG Lead				
01/26/2016	11:27:08	457	8.2	12.08	53.4	SKS = 840 Y = 1.8				
01/26/2016	11:27:13	460	8.2	12.08	54.1					
01/26/2016	11:27:18	467	8.2	12.08	54.8	Take Dry Sample				
01/26/2016	11:27:24	445	8.2	12.08	55.6	Take Wet Sample				
01/26/2016	11:28:43	424	8.2	12.07	66.3					
01/26/2016	11:30:13	415	8.2	12.06	78.6					
01/26/2016	11:31:43	424	8.2	12.05	90.9					
01/26/2016	11:33:13	421	8.2	12.05	103.2					
01/26/2016	11:34:43	407	8.2	12.06	115.5					
01/26/2016	11:36:13	406	8.2	12.04	127.7					
01/26/2016	11:37:43	408	8.2	12.04	140.0					
01/26/2016	11:39:13	413	8.2	12.05	152.3					
01/26/2016	11:40:43	429	8.2	12.04	164.5					
01/26/2016	11:42:13	411	8.2	12.06	176.8					
01/26/2016	11:43:43	405	8.2	12.06	189.1					
01/26/2016	11:45:13	407	8.2	12.06	201.4					
01/26/2016	11:46:43	419	8.2	12.05	213.6					
01/26/2016	11:48:13	408	8.2	12.04	225.9					
01/26/2016	11:49:43	406	8.2	12.05	238.2					
01/26/2016	11:51:13	408	8.2	12.02	250.5					
01/26/2016	11:52:43	281	6.4	12.09	262.3					
01/26/2016	11:53:00	306	6.4	12.08	264.1	End Lead Slurry				
01/26/2016	11:54:13	194	4.5	12.72	270.9					
01/26/2016	11:55:43	248	4.6	13.29	4.3					
01/26/2016	11:57:00	257	4.6	13.49	10.2	Start Mixing Tail Slurry				
01/26/2016	11:57:13	260	4.5	13.51	11.2					
01/26/2016	11:58:43	411	6.4	13.51	19.8					
01/26/2016	12:00:00	608	8.2	13.55	28.2	Pump 320 BBLS 13.5 PPG Tail				
01/26/2016	12:00:13	597	8.1	13.57	29.9					
01/26/2016	12:01:43	604	8.1	13.52	42.0					

Well			Field	Job Start		Customer		Job Number	
Whisper Rock 7N-25HZ 7N-25HZ			Wattenberg		Jan/26/2016		Anadarko		2245631
Date	Time 24-hr clock	Treating Pressure PSI	Flow Rate B/M	Density LB/G	Volume BBL	Message			
01/26/2016	12:03:13	610	8.1	13.54	54.1				
01/26/2016	12:04:00	590	8.1	13.55	60.5	Take Dry Sample			
01/26/2016	12:04:43	612	8.1	13.56	66.3				
01/26/2016	12:05:00	582	8.1	13.54	68.5	Take Wet Sample			
01/26/2016	12:06:13	598	8.1	13.54	78.4				
01/26/2016	12:07:43	594	8.1	13.52	90.5				
01/26/2016	12:09:13	596	8.1	13.55	102.6				
01/26/2016	12:10:43	599	8.1	13.57	114.7				
01/26/2016	12:12:13	572	8.1	13.42	126.8				
01/26/2016	12:13:43	567	8.1	13.41	138.9				
01/26/2016	12:15:13	593	8.1	13.51	151.1				
01/26/2016	12:16:43	595	8.1	13.52	163.2				
01/26/2016	12:18:13	593	8.1	13.47	175.3				
01/26/2016	12:19:43	585	8.1	13.47	187.4				
01/26/2016	12:21:13	600	8.1	13.55	199.5				
01/26/2016	12:22:43	593	8.1	13.52	211.7				
01/26/2016	12:24:13	595	8.1	13.60	223.8				
01/26/2016	12:25:43	584	8.1	13.52	235.9				
01/26/2016	12:27:13	589	8.1	13.56	248.0				
01/26/2016	12:28:43	583	8.1	13.54	260.1				
01/26/2016	12:30:13	594	8.1	13.57	272.2				
01/26/2016	12:31:43	612	8.1	13.65	284.3				
01/26/2016	12:33:13	604	8.1	13.66	296.4				
01/26/2016	12:34:43	449	6.3	13.62	306.6				
01/26/2016	12:36:13	244	4.4	13.58	315.4				
01/26/2016	12:37:43	184	3.3	13.59	320.9				
01/26/2016	12:39:13	171	3.3	13.57	325.8				
01/26/2016	12:40:00	157	3.3	13.58	328.4	End Tail Slurry			
01/26/2016	12:40:43	37	0.0	13.59	329.2				
01/26/2016	12:42:13	42	0.0	13.61	329.2				
01/26/2016	12:43:43	98	2.7	9.61	1.7				
01/26/2016	12:45:13	49	1.0	8.44	5.6				
01/26/2016	12:46:43	72	2.1	9.08	8.7				
01/26/2016	12:48:13	94	2.8	8.74	12.2				
01/26/2016	12:49:43	34	2.0	8.35	16.2				
01/26/2016	12:51:13	30	0.0	8.37	17.8				
01/26/2016	12:52:43	29	0.0	8.37	0.0				
01/26/2016	12:54:13	48	2.3	8.41	2.0				
01/26/2016	12:55:43	27	0.0	8.41	2.2				
01/26/2016	12:57:13	27	0.0	8.41	2.2				
01/26/2016	12:58:43	27	0.0	8.41	2.2				
01/26/2016	13:00:13	27	0.0	8.41	2.2				
01/26/2016	13:01:00	30	0.1	8.42	2.4	Drop Top Plug			
01/26/2016	13:01:43	58	2.3	8.42	2.7				
01/26/2016	13:03:13	49	2.3	8.40	6.2				
01/26/2016	13:04:43	36	1.7	8.40	9.6				
01/26/2016	13:06:13	240	8.4	8.41	19.1				
01/26/2016	13:07:43	1363	8.2	8.38	31.6				
01/26/2016	13:09:13	1105	8.2	8.38	43.9				
01/26/2016	13:10:43	1196	8.2	8.38	56.2				
01/26/2016	13:12:13	1277	8.2	8.38	68.6				
01/26/2016	13:13:43	1381	8.2	8.39	80.9				
01/26/2016	13:15:00	1505	8.2	8.38	91.4	Displace 311 BBLs BioCide			
01/26/2016	13:15:13	1525	8.2	8.38	93.2				

Well			Field	Job Start		Customer		Job Number	
Whisper Rock 7N-25HZ 7N-25HZ			Wattenberg		Jan/26/2016		Anadarko		2245631
Date	Time 24-hr clock	Treating Pressure PSI	Flow Rate B/M	Density LB/G	Volume BBL	Message			
01/26/2016	13:18:13	1783	8.2	8.38	117.7				
01/26/2016	13:19:43	1941	8.2	8.38	129.9				
01/26/2016	13:21:13	2072	8.2	8.38	142.2				
01/26/2016	13:22:43	2251	8.1	8.38	154.4				
01/26/2016	13:24:13	2396	8.1	8.38	166.6				
01/26/2016	13:25:43	2516	8.1	8.37	178.8				
01/26/2016	13:27:13	2529	8.1	8.38	190.9				
01/26/2016	13:28:43	2527	8.1	8.38	203.1				
01/26/2016	13:30:13	2553	8.1	8.37	215.2				
01/26/2016	13:31:43	2592	8.1	8.38	227.4				
01/26/2016	13:33:13	2618	8.1	8.37	239.5				
01/26/2016	13:34:43	2631	8.1	8.38	251.7				
01/26/2016	13:36:13	2645	8.1	8.37	263.9				
01/26/2016	13:37:43	2686	8.1	8.37	276.0				
01/26/2016	13:39:13	2692	8.1	8.37	288.2				
01/26/2016	13:40:43	2464	6.3	8.37	299.0				
01/26/2016	13:42:13	2232	4.4	8.37	307.3				
01/26/2016	13:43:43	2251	4.4	8.37	314.0				
01/26/2016	13:44:00	1909	2.2	8.37	314.8	Bump Top Plug			
01/26/2016	13:45:13	3076	0.0	8.37	316.4				
01/26/2016	13:46:43	3125	0.0	8.37	316.4				
01/26/2016	13:48:13	3161	0.0	8.38	316.4				
01/26/2016	13:49:43	3202	0.0	8.38	316.4				
01/26/2016	13:51:13	3238	0.0	8.38	316.4				
01/26/2016	13:52:43	3268	0.0	8.38	316.4				
01/26/2016	13:54:13	3296	0.0	8.38	316.4				
01/26/2016	13:55:43	3324	0.0	8.38	316.4				
01/26/2016	13:57:13	3349	0.0	8.38	316.4				
01/26/2016	13:58:43	3373	0.0	8.38	316.4				
01/26/2016	13:59:00	3379	0.0	8.38	316.4	Casing Test = Good			
01/26/2016	14:00:13	3196	0.0	8.38	316.4				
01/26/2016	14:01:43	27	0.0	8.38	316.4				
01/26/2016	14:03:13	27	0.0	8.38	316.4				
01/26/2016	14:04:43	25	0.0	8.38	316.4				
01/26/2016	14:06:13	34	0.0	8.38	316.4				
01/26/2016	14:07:43	23	0.0	8.38	316.4				
01/26/2016	14:09:13	45	0.7	8.38	318.6				
01/26/2016	14:10:43	25	0.0	7.51	319.6				
01/26/2016	14:12:13	31	0.0	8.15	322.3				
01/26/2016	14:13:43	25	0.0	8.38	322.3				
01/26/2016	14:15:13	26	0.0	8.37	322.3				
01/26/2016	14:16:43	26	0.0	8.38	322.4				
01/26/2016	14:18:13	27	0.0	8.37	322.4				
01/26/2016	14:19:43	26	0.0	8.37	322.4				

<b>Well</b> Whisper Rock 7N-25HZ 7N-25HZ	<b>Field</b> Wattenberg	<b>Job Start</b> Jan/26/2016	<b>Customer</b> Anadarko	<b>Job Number</b> 2245631
---	----------------------------	---------------------------------	-----------------------------	------------------------------

Post Job Summary

Average Pump Rates, bbl/min					Volume of Fluid Injected, bbl					
Slurry 6.3	N2	Mud	Maximum Rate 10.8		Total Slurry 589.0	Mud 0.0	Spacer 80.0	N2		
Treating Pressure Summary, psi					Breakdown Fluid					
Maximum 4882	Final 25	Average 890	Bump Plug to 3000	Breakdown	Type		Volume bbl		Density lb/gal	
Avg. N2 Percent %		Designed Slurry Volume 589.0 bbl		Displacement 311.0 bbl		Mix Water Temp 65 degF		Cement Circulated to Surface? <input checked="" type="checkbox"/>		Volume 20.0 bbl
								Washed Thru Perfs <input type="checkbox"/>		To ft
Customer or Authorized Representative				Schlumberger Supervisor Conley Jensen/ Ken Sovereign				Circulation Lost <input type="checkbox"/>		Job Completed <input checked="" type="checkbox"/>
								-		-



<b>Service Order #:</b>	
<b>Date:</b>	Jan/26/2016
<b>Operating Time (hh:mm):</b>	00:00
<b>Client Rep:</b>	
<b>Schlumberger Engineer:</b>	Conley Jensen/ Ken Sovereign
<b>Schlumberger FSM:</b>	

**To be completed by Company Rep. Please answer Y (Yes) or N (No) and add any comments below.**

<b>4</b>	<b>Evaluation</b>					
4a	Main job objective achieved with no consequential non-productive time	10	yes <input type="checkbox"/>	no <input checked="" type="checkbox"/>		0
					Sub-total	0%

**Comments:** (Please include a brief explanation for a "NO" response and summarize any innovations attempted on this well.)

<b>Client:</b>	<b>Schlumberger:</b>
<b>Client Signature:</b>	<b>Schlumberger Signature:</b>