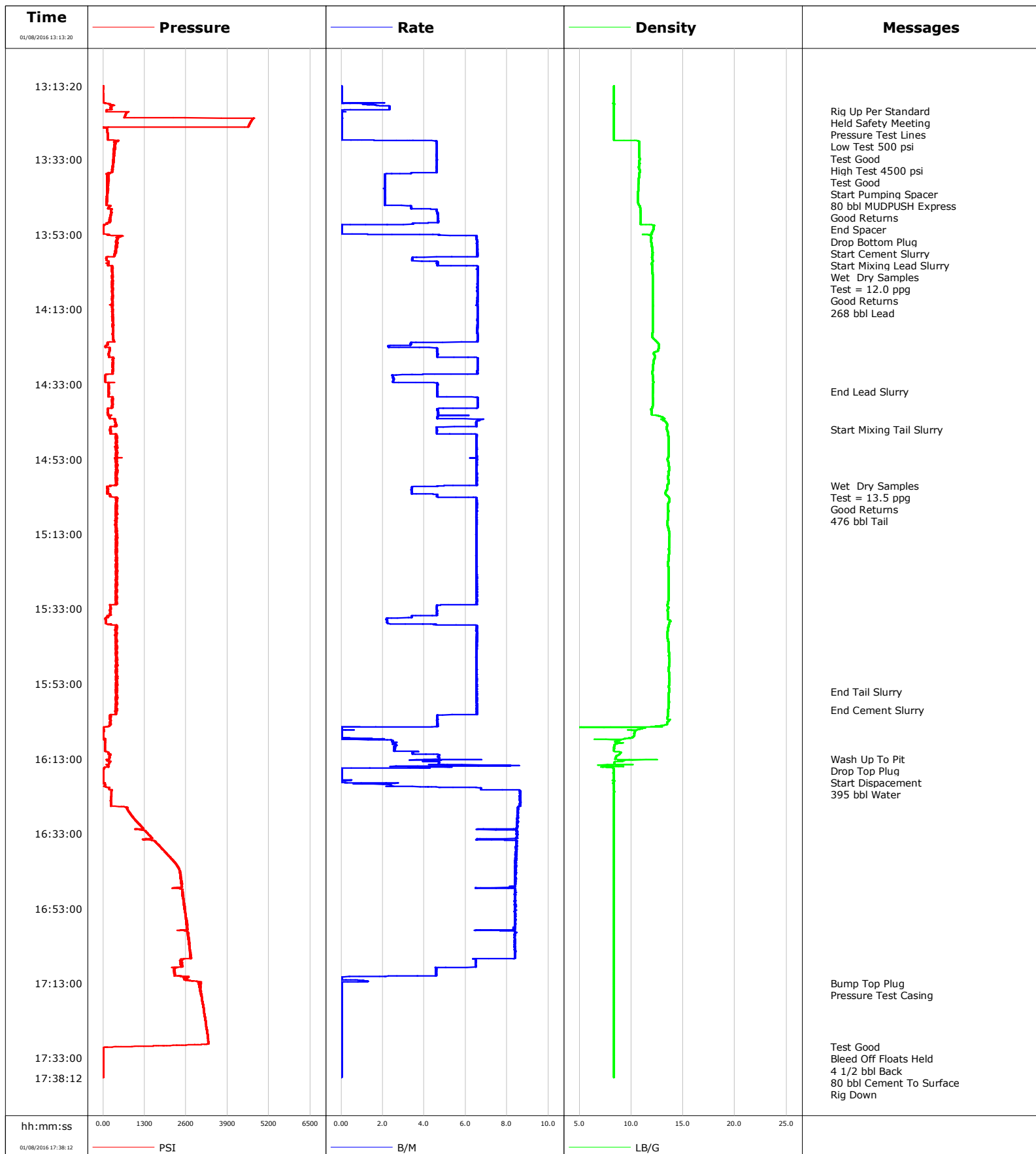


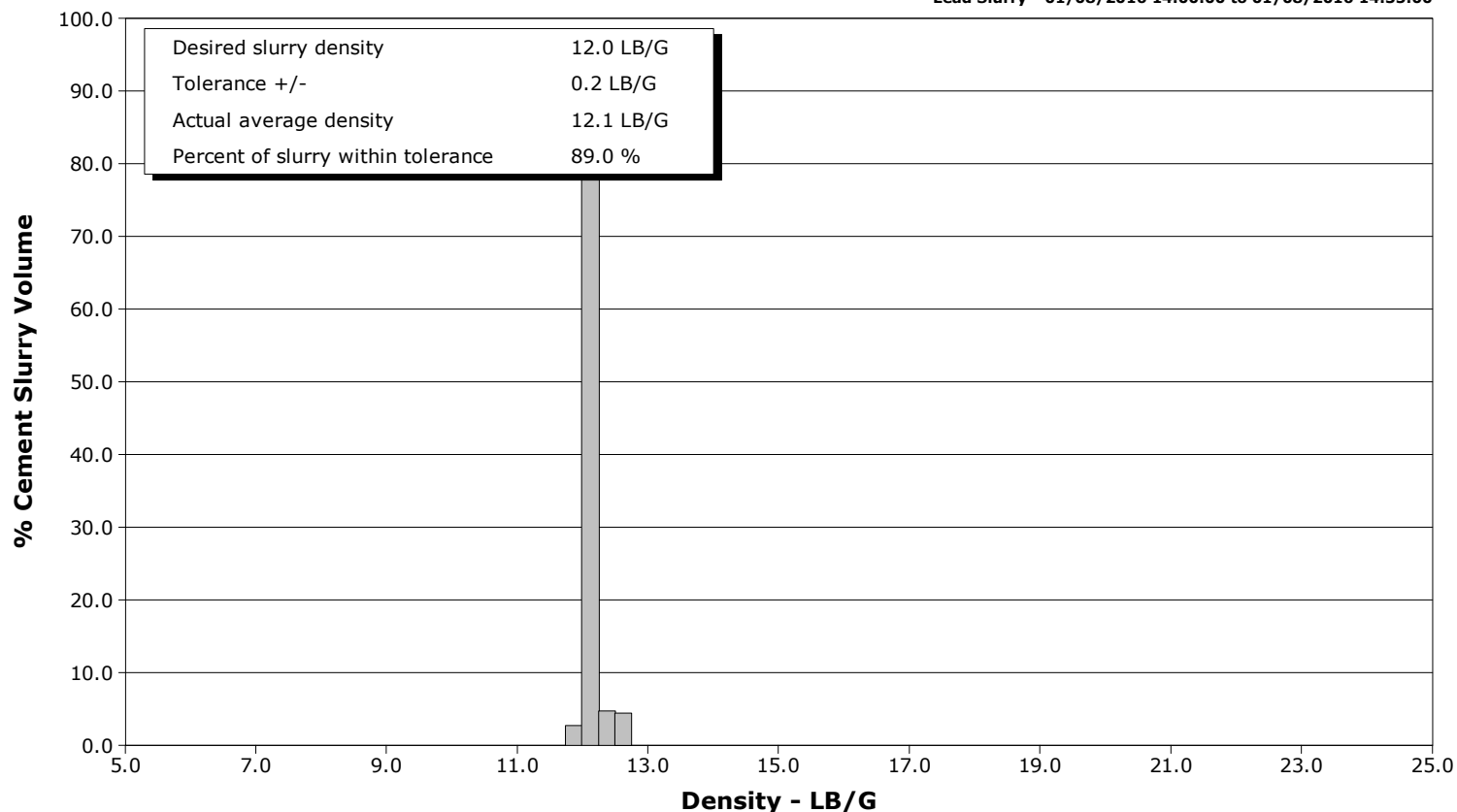
Well	Wilson Ranch 12C-27HZ	Client	Anadarko
Field	Wattenberge	SIR No.	CWJN-01602
Engineer	Jordan Moreland / Stacy Terry	Job Type	5 1/2 Monobore
Country		Job Date	



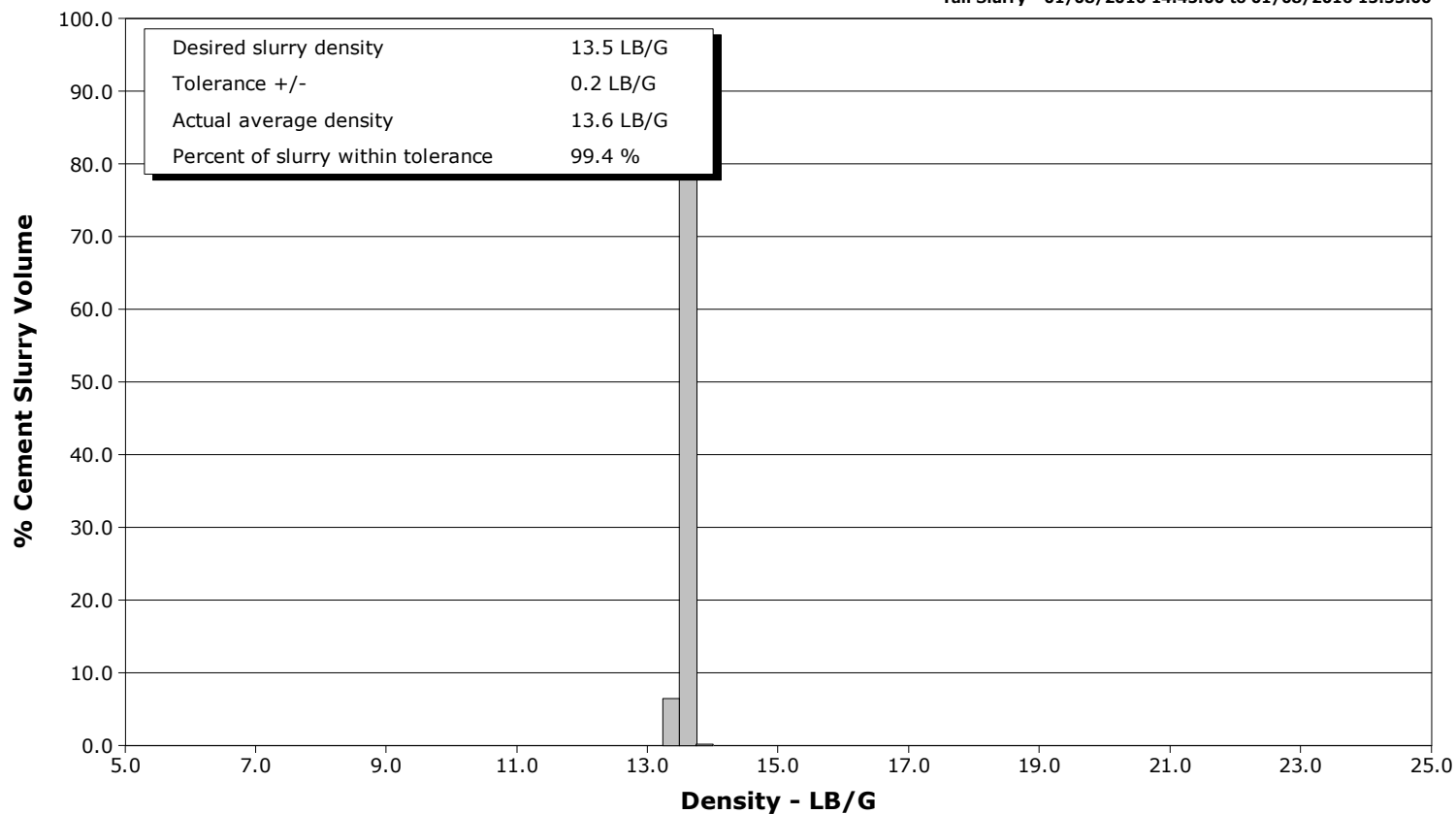
Well Wilson Ranch 12C-27HZ
Field Wattenberge
Engineer Jordan Moreland / Stacy Terry
Country

Client Anadarko
SIR No. CWJN-01602
Job Type 5 1/2 Monobore
Job Date

Lead Slurry - 01/08/2016 14:00:00 to 01/08/2016 14:35:00



Tail Slurry - 01/08/2016 14:45:00 to 01/08/2016 15:55:00



Cementing Service Report

				Customer Anadarko				Job Number CWJN-01602							
Well Wilson Ranch 12C-27HZ			Location (legal)			Schlumberger Location			Job Start Jan/08/2016						
Field Wattenberge		Formation Name/Type			Deviation deg		Bit Size 8.5 in		Well MD ft		Well TVD ft				
County Weld		State/Province Colorado			BHP psi		BHST 237 degF		BHCT 235 degF		Pore Press. Gradient lb/gal				
Well Master 0631630653		API/UWI 05123413180000													
Rig Name Precision 460		Drilled For Oil		Service Via Land		Casing/ Liner									
						Depth, ft		Size, in		Weight, lb/ft		Grade	Thread		
Offshore Zone		Well Class New		Well Type Development		17090.0		5.5		17.0		P110	8RD		
						0.0		0.0		0.0					
Drilling Fluid Type		Max. Density lb/gal		Plastic Viscosity cP		Tubing/Drill Pipe									
						T/D		Depth, ft		Size, in		Weight, lb/ft		Grade	Thread
Service Line Cementing		Job Type 5 1/2 Monobore													
Max. Allowed Tub. Press psi		Max. Allowed Ann. Press psi		WH Connection Double Cement head		Perforations/Open Hole									
						Top, ft		Bottom, ft		shot/ft		No. of Shots		Total Interval ft	
Service Instructions Rate And Density Checked 80 bbl MUDPUSH Express 840 sks 12.0 Lead 1590 sks 13.5 Tail Displace 395 bbl Water						ft		ft							
						ft		ft						Diameter in	
						ft		ft							
		Treat Down Casing		Displacement 395.0 bbl		Packer Type		Packer Depth ft							
		Tubing Vol. bbl		Casing Vol. 396.0 bbl		Annular Vol. 711.0 bbl		Openhole Vol. 1266.0 bbl							
Casing/Tubing Secured <input checked="" type="checkbox"/>		1 Hole Vol. Circulated prior to Cement <input checked="" type="checkbox"/>				Casing Tools				Squeeze Job					
Lift Pressure psi						Shoe Type Float				Squeeze Type					
Pipe Rotated <input type="checkbox"/>		Pipe Reciprocated <input type="checkbox"/>				Shoe Depth 17090.0 ft				Tool Type					
No. Centralizers		Top Plugs 1		Bottom Plugs 1		Stage Tool Type				Tool Depth ft					
Cement Head Type Double						Stage Tool Depth ft				Tail Pipe Size in					
Job Scheduled For Jan/08/2016		Arrived on Location Jan/08/2016		Leave Location Jan/08/2016		Collar Type Float				Tail Pipe Depth ft					
						Collar Depth 16997.0 ft				Sqz. Total Vol. bbl					
Date	Time 24-hr clock	Treating Pressure PSI	Flow Rate B/M	Density LB/G	Volume BBL	Message									
01/08/2016	13:13:20	14	0.0	8.33	0.0										
01/08/2016	13:15:20	-1	0.0	8.33	0.0										
01/08/2016	13:17:20	8	0.0	8.33	0.0										
01/08/2016	13:19:20	246	2.3	8.32	2.6										
01/08/2016	13:20:00	99	0.0	8.32	3.6	Rig Up Per Standard									
01/08/2016	13:21:20	687	0.0	8.32	3.6										
01/08/2016	13:23:20	4603	0.0	8.32	3.6										
01/08/2016	13:25:20	131	0.0	8.32	3.6										
01/08/2016	13:27:20	152	0.0	8.33	3.6										
01/08/2016	13:29:20	368	4.6	10.77	10.1										
01/08/2016	13:30:00	378	4.6	10.76	13.2	Start Pumping Spacer									
01/08/2016	13:31:00	343	4.6	10.76	17.8	Good Returns									
01/08/2016	13:31:20	332	4.6	10.76	19.3										
01/08/2016	13:33:20	303	4.6	10.77	28.5										
01/08/2016	13:35:20	284	4.6	10.74	37.7										
01/08/2016	13:37:20	126	2.1	10.77	45.3										
01/08/2016	13:39:20	159	2.1	10.71	49.5										
01/08/2016	13:41:20	152	2.1	10.65	53.7										
01/08/2016	13:43:20	116	2.1	10.61	57.9										
01/08/2016	13:45:00	128	2.1	10.70	61.4	End Spacer									
01/08/2016	13:45:20	227	3.2	10.79	62.1										

Well			Field	Job Start		Customer		Job Number	
Wilson Ranch 12C-27HZ			Wattenberge		Jan/08/2016		Anadarko		CWJN-01602
Date	Time 24-hr clock	Treating Pressure PSI	Flow Rate B/M	Density LB/G	Volume BBL	Message			
01/08/2016	13:49:20	194	4.7	10.90	79.5				
01/08/2016	13:50:42	16	0.0	12.19	84.0	Drop Bottom Plug			
01/08/2016	13:51:20	7	0.0	12.16	84.0				
01/08/2016	13:53:20	602	6.5	11.85	85.5				
01/08/2016	13:55:00	454	6.6	11.92	96.4	Start Cement Slurry			
01/08/2016	13:55:20	405	6.5	11.95	98.6				
01/08/2016	13:57:20	391	6.5	12.03	111.7				
01/08/2016	13:59:20	95	3.4	11.99	124.0				
01/08/2016	14:00:00	117	3.4	12.07	126.2	Start Mixing Lead Slurry			
01/08/2016	14:01:00	158	4.6	11.99	130.7	Wet Dry Samples			
01/08/2016	14:01:20	152	4.6	11.99	132.2				
01/08/2016	14:03:00	293	6.6	12.03	143.1	268 bbl Lead			
01/08/2016	14:03:20	288	6.6	12.04	145.3				
01/08/2016	14:05:20	273	6.6	12.05	158.4				
01/08/2016	14:07:20	305	6.6	12.06	171.5				
01/08/2016	14:09:20	286	6.6	12.07	184.7				
01/08/2016	14:11:20	296	6.5	12.06	197.8				
01/08/2016	14:13:20	300	6.6	12.07	210.9				
01/08/2016	14:15:20	311	6.6	12.06	224.0				
01/08/2016	14:17:20	294	6.6	12.07	237.2				
01/08/2016	14:19:20	305	6.6	12.04	250.3				
01/08/2016	14:21:20	324	6.6	12.32	263.4				
01/08/2016	14:23:20	213	4.6	12.64	271.2				
01/08/2016	14:25:20	173	4.6	12.25	280.5				
01/08/2016	14:27:20	291	6.6	12.14	292.6				
01/08/2016	14:29:20	296	6.5	12.08	305.8				
01/08/2016	14:31:20	67	2.5	12.10	315.1				
01/08/2016	14:33:20	178	4.6	12.11	321.7				
01/08/2016	14:35:00	177	4.6	12.08	329.4	End Lead Slurry			
01/08/2016	14:35:20	174	4.6	12.08	331.0				
01/08/2016	14:37:20	294	6.6	12.09	341.9				
01/08/2016	14:39:20	272	6.6	12.02	355.1				
01/08/2016	14:41:20	264	5.7	12.41	364.6				
01/08/2016	14:43:20	383	6.5	13.38	376.1				
01/08/2016	14:45:00	220	4.6	13.41	385.8	Start Mixing Tail Slurry			
01/08/2016	14:45:20	219	4.6	13.45	387.3				
01/08/2016	14:47:20	407	6.5	13.58	398.5				
01/08/2016	14:49:20	413	6.5	13.58	411.5				
01/08/2016	14:51:20	405	6.5	13.60	424.6				
01/08/2016	14:53:20	387	6.5	13.51	437.6				
01/08/2016	14:55:20	402	6.5	13.64	450.7				
01/08/2016	14:57:20	426	6.5	13.58	463.8				
01/08/2016	14:59:20	427	6.5	13.60	476.8				
01/08/2016	15:00:00	369	6.5	13.48	481.2	Wet Dry Samples			
01/08/2016	15:01:00	134	3.4	13.45	485.3	Test = 13.5 ppg			
01/08/2016	15:01:20	154	3.4	13.41	486.4				
01/08/2016	15:02:00	148	3.4	13.31	488.6	Good Returns			
01/08/2016	15:03:00	238	4.6	13.53	492.8	476 bbl Tail			
01/08/2016	15:03:20	401	6.5	13.62	494.6				
01/08/2016	15:05:20	430	6.5	13.54	507.6				
01/08/2016	15:07:20	411	6.5	13.55	520.7				
01/08/2016	15:09:20	395	6.5	13.52	533.7				
01/08/2016	15:11:20	412	6.5	13.56	546.8				
01/08/2016	15:13:20	448	6.5	13.67	559.8				

Well Wilson Ranch 12C-27HZ			Field Wattenberge		Job Start Jan/08/2016		Customer Anadarko		Job Number CWJN-01602	
Date	Time 24-hr clock	Treating Pressure PSI		Flow Rate B/M	Density LB/G		Volume BBL		Message	
01/08/2016	15:17:20	429		6.5	13.62		585.9			
01/08/2016	15:19:20	437		6.5	13.60		599.0			
01/08/2016	15:21:20	400		6.5	13.56		612.0			
01/08/2016	15:23:20	431		6.5	13.60		625.1			
01/08/2016	15:25:20	392		6.5	13.60		638.1			
01/08/2016	15:27:20	413		6.5	13.58		651.2			
01/08/2016	15:29:20	430		6.5	13.57		664.3			
01/08/2016	15:31:20	394		6.5	13.56		677.3			
01/08/2016	15:33:20	212		4.6	13.49		687.8			
01/08/2016	15:35:20	144		3.4	13.54		696.4			
01/08/2016	15:37:20	413		6.2	13.61		701.6			
01/08/2016	15:39:20	391		6.5	13.51		714.7			
01/08/2016	15:41:20	395		6.5	13.54		727.7			
01/08/2016	15:43:20	395		6.5	13.60		740.8			
01/08/2016	15:45:20	422		6.5	13.62		753.9			
01/08/2016	15:47:20	441		6.5	13.66		766.9			
01/08/2016	15:49:20	433		6.5	13.60		779.9			
01/08/2016	15:51:20	438		6.5	13.66		793.0			
01/08/2016	15:53:20	435		6.5	13.64		806.1			
01/08/2016	15:55:00	447		6.5	13.62		816.9	End Tail Slurry		
01/08/2016	15:55:20	431		6.5	13.62		819.1			
01/08/2016	15:57:20	423		6.5	13.60		832.2			
01/08/2016	15:59:20	413		6.5	13.57		845.3			
01/08/2016	16:00:00	406		6.5	13.56		849.6	End Cement Slurry		
01/08/2016	16:01:20	247		4.9	13.55		858.3			
01/08/2016	16:03:20	227		4.6	13.46		867.6			
01/08/2016	16:05:20	20		0.2	10.52		873.2			
01/08/2016	16:07:20	9		0.0	10.13		873.3			
01/08/2016	16:09:20	56		2.6	8.38		877.2			
01/08/2016	16:11:20	154		3.5	8.98		882.6			
01/08/2016	16:13:00	193		4.7	8.46		889.8	Wash Up To Pit		
01/08/2016	16:13:20	113		3.7	11.45		891.4			
01/08/2016	16:14:00	195		4.7	8.36		894.2	Drop Top Plug		
01/08/2016	16:15:00	160		5.0	8.78		899.8	395 bbl Water		
01/08/2016	16:15:20	47		3.2	7.64		901.2			
01/08/2016	16:17:20	5		0.0	8.33		902.0			
01/08/2016	16:19:20	2		0.0	8.33		902.1			
01/08/2016	16:21:20	276		7.8	8.34		909.4			
01/08/2016	16:23:20	250		8.6	8.33		926.6			
01/08/2016	16:25:20	244		8.6	8.33		943.9			
01/08/2016	16:27:20	820		8.5	8.32		960.9			
01/08/2016	16:29:20	1007		8.5	8.33		978.0			
01/08/2016	16:31:20	1221		8.5	8.33		994.9			
01/08/2016	16:33:20	1427		8.5	8.32		1011.5			
01/08/2016	16:35:20	1664		8.4	8.32		1027.7			
01/08/2016	16:37:20	1867		8.4	8.32		1044.6			
01/08/2016	16:39:20	2108		8.4	8.32		1061.4			
01/08/2016	16:41:20	2302		8.4	8.32		1078.3			
01/08/2016	16:43:20	2420		8.4	8.32		1095.1			
01/08/2016	16:45:20	2448		8.4	8.32		1111.8			
01/08/2016	16:47:20	2450		8.3	8.32		1128.6			
01/08/2016	16:49:20	2503		8.4	8.32		1145.0			
01/08/2016	16:51:20	2524		8.4	8.32		1161.8			
01/08/2016	16:53:20	2551		8.4	8.32		1178.5			

Well Wilson Ranch 12C-27HZ			Field Wattenberge		Job Start Jan/08/2016	Customer Anadarko		Job Number CWJN-01602
Date	Time 24-hr clock	Treating Pressure PSI	Flow Rate B/M	Density LB/G	Volume BBL	Message		
01/08/2016	16:57:20	2611	8.4	8.32	1212.1			
01/08/2016	16:59:20	2666	8.4	8.32	1228.4			
01/08/2016	17:01:20	2693	8.4	8.32	1245.2			
01/08/2016	17:03:20	2709	8.4	8.32	1261.9			
01/08/2016	17:05:20	2735	8.4	8.32	1278.7			
01/08/2016	17:07:20	2441	6.5	8.32	1293.7			
01/08/2016	17:09:20	2227	4.6	8.32	1305.6			
01/08/2016	17:11:20	2519	0.0	8.32	1313.9			
01/08/2016	17:13:00	2998	0.0	8.32	1314.5	Bump Top Plug		
01/08/2016	17:13:20	3001	0.0	8.32	1314.5			
01/08/2016	17:14:00	3020	0.0	8.32	1314.5	Pressure Test Casing		
01/08/2016	17:15:20	3047	0.0	8.32	1314.5			
01/08/2016	17:17:20	3099	0.0	8.32	1314.5			
01/08/2016	17:19:20	3138	0.0	8.33	1314.5			
01/08/2016	17:21:20	3174	0.0	8.33	1314.5			
01/08/2016	17:23:20	3212	0.0	8.33	1314.5			
01/08/2016	17:25:20	3244	0.0	8.33	1314.5			
01/08/2016	17:27:20	3277	0.0	8.33	1314.5			
01/08/2016	17:29:20	3088	0.0	8.33	1314.5			
01/08/2016	17:30:00	344	0.0	8.33	1314.5	Test Good		
01/08/2016	17:31:20	1	0.0	8.33	1314.5			
01/08/2016	17:33:20	1	0.0	8.33	1314.5			
01/08/2016	17:35:20	1	0.0	8.33	1314.5			

Post Job Summary

Average Pump Rates, bbl/min					Volume of Fluid Injected, bbl						
Slurry	N2	Mud	Maximum Rate		Total Slurry	Mud	Spacer	N2			
Treating Pressure Summary, psi					Breakdown Fluid						
Maximum	Final 0	Average	Bump Plug to	Breakdown	Type	Volume bbl	Density lb/gal				
Avg. N2 Percent %	Designed Slurry Volume 0.0 bbl		Displacement bbl	Mix Water Temp 80 degF	Cement Circulated to Surface? <input checked="" type="checkbox"/>		Volume	bbl			
					Washed Thru Perfs <input type="checkbox"/>		To	ft			
Customer or Authorized Representative			Schlumberger Supervisor Jordan Moreland / Stacy Terry			Circulation Lost <input type="checkbox"/>	Job Completed <input checked="" type="checkbox"/>				
						-	-				