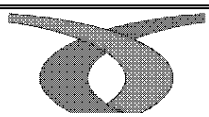


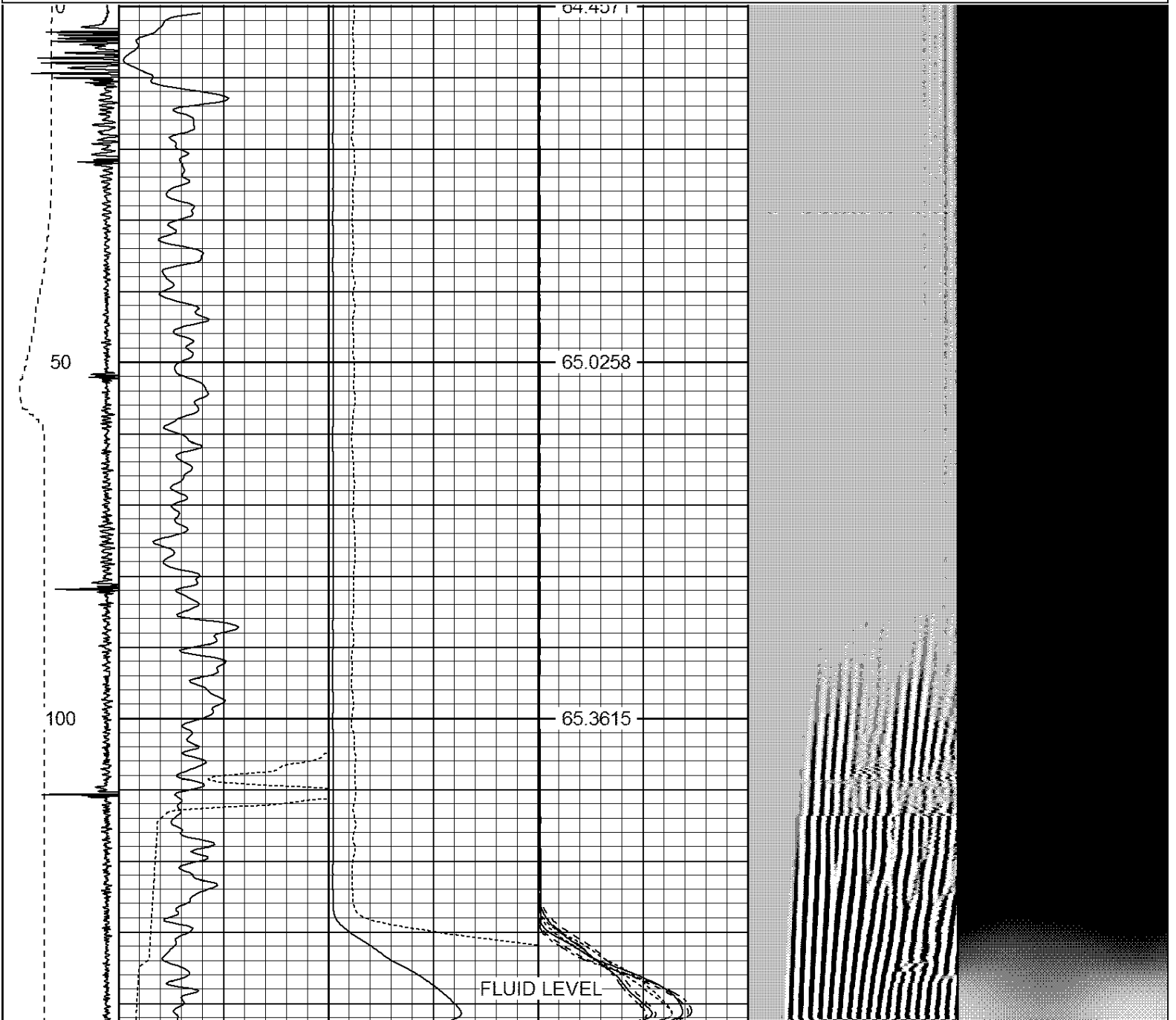
Dataset: chikuma harry s gu b #1.db: field/well/run1/pass4
 Total Length: 19.96 ft
 Total Weight: 165.00 lb
 O.D. 2.75 in



REPEAT PASS

Database File: chikuma hary s gu b #1.db
 Dataset Pathname: pass4
 Presentation Format: ips_rbt
 Dataset Creation: Wed Feb 10 22:00:35 2016 by Log 7.0 B1
 Charted by: Depth in Feet scaled 1:240

-9	CCL	1	200	TT (usec)	1100	0	AMP (mV)	100	0	AMPS1	100	200	VDL	1200	1	Cement Map	8
	LSPD		0	GR (GAPI)	200	0	AMPx5 (mV)	20	0	AMPS2	100				100		1
	(ft/min)		200	GR (GAPI)	400					AMPS3	100						
0		250								AMPS4	100						
										AMPS5	100						
										AMPS6	100						
										AMPS7	100						
										AMPS8	100						
										IntTemp							
										(degF)							



150

65.7205

200

66.0431

250

66.3615

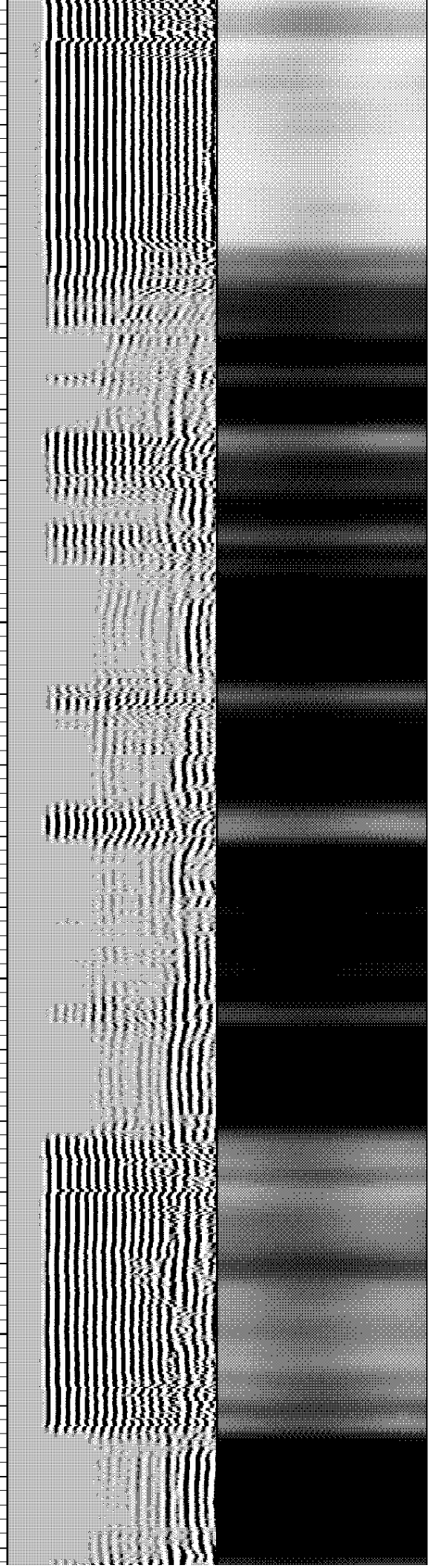
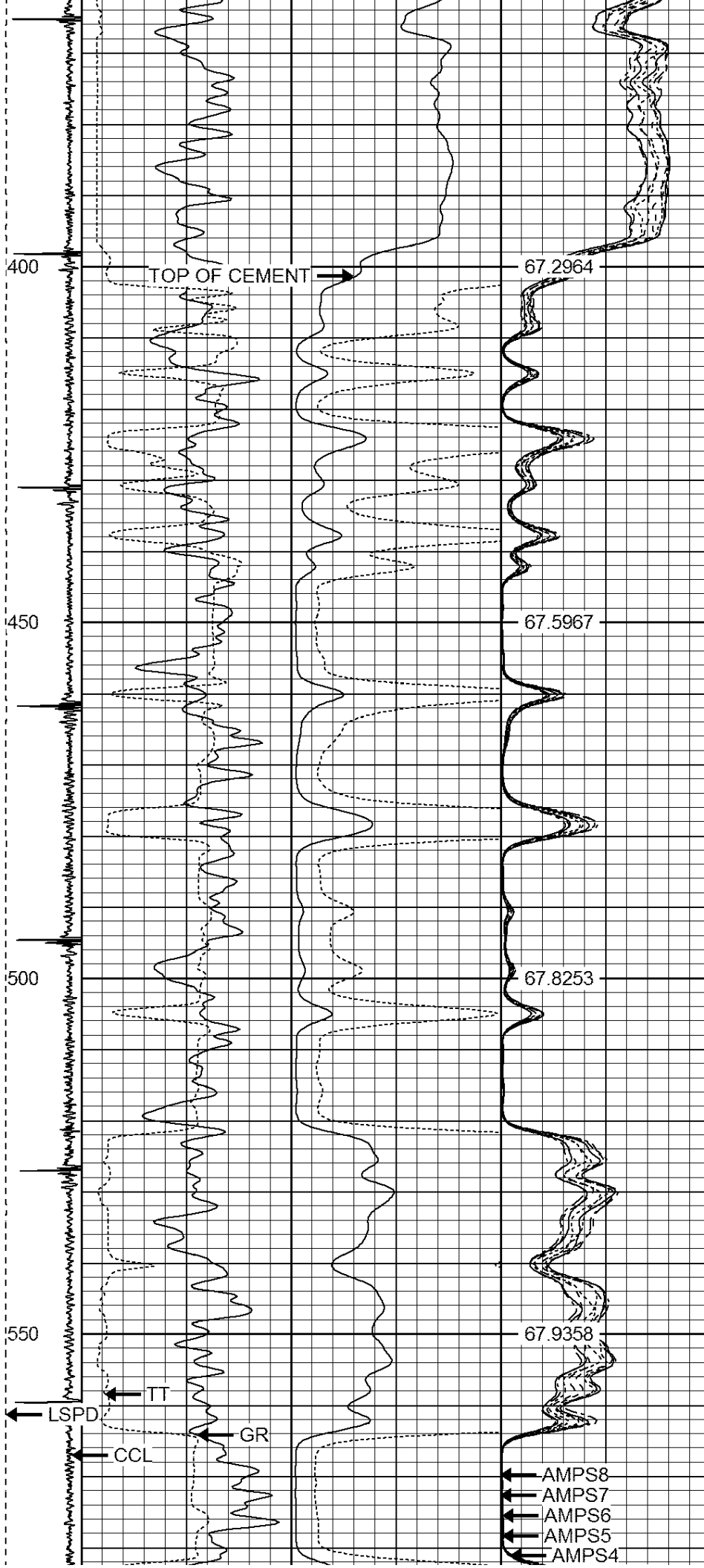
300

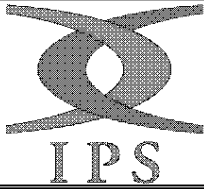
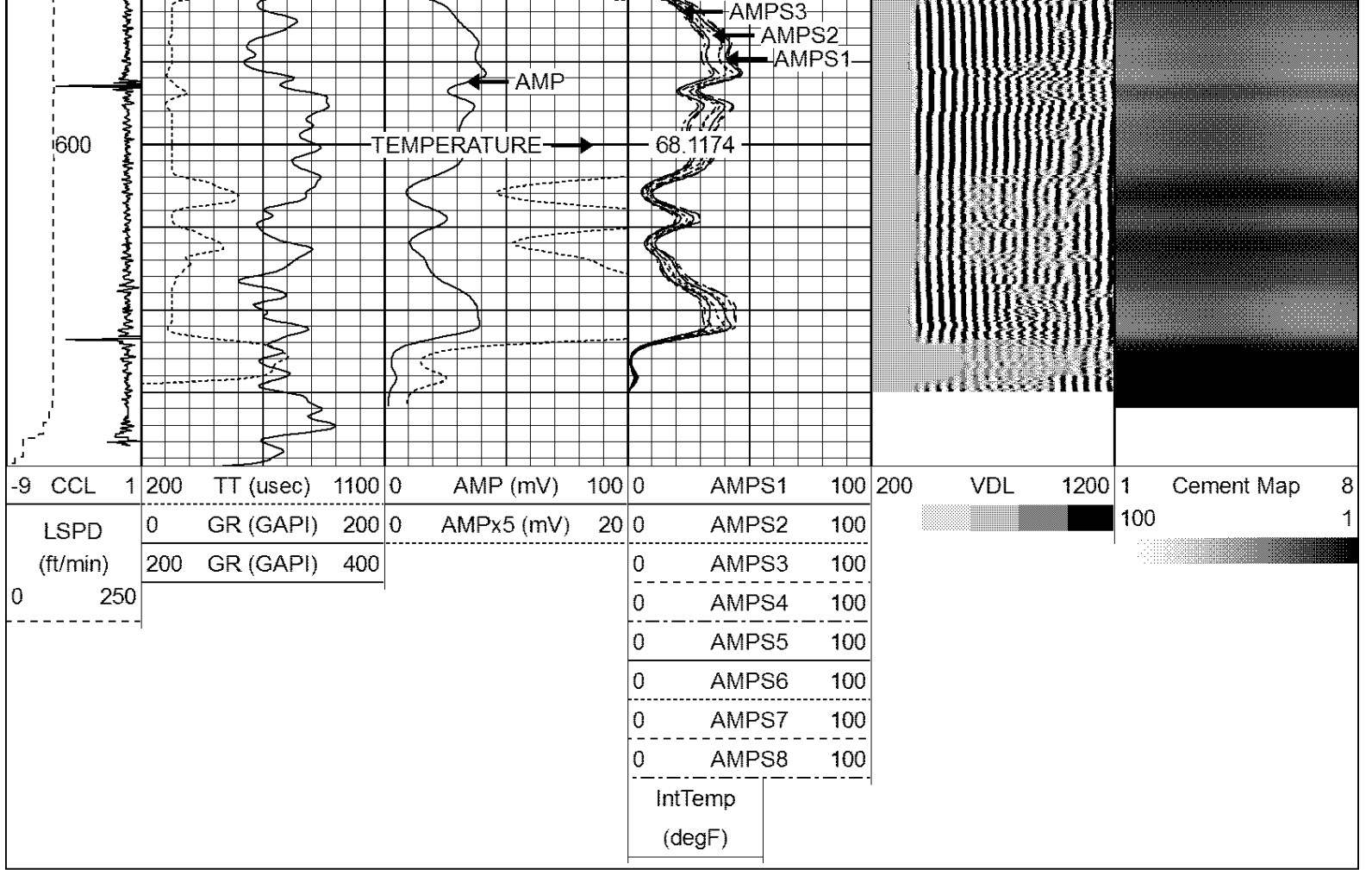
66.6515

350

67.0167

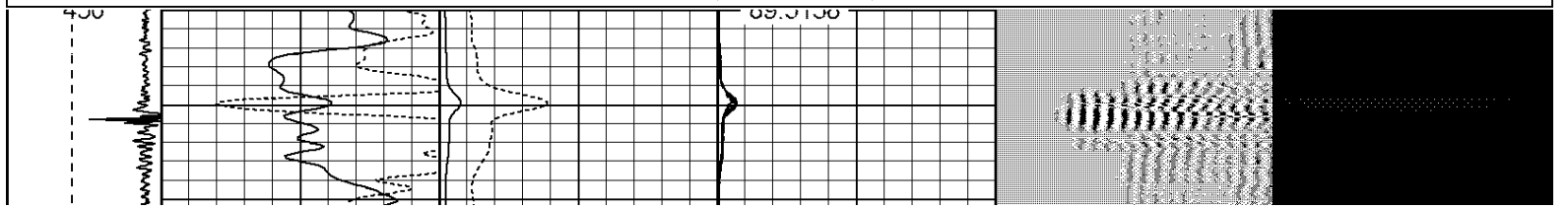
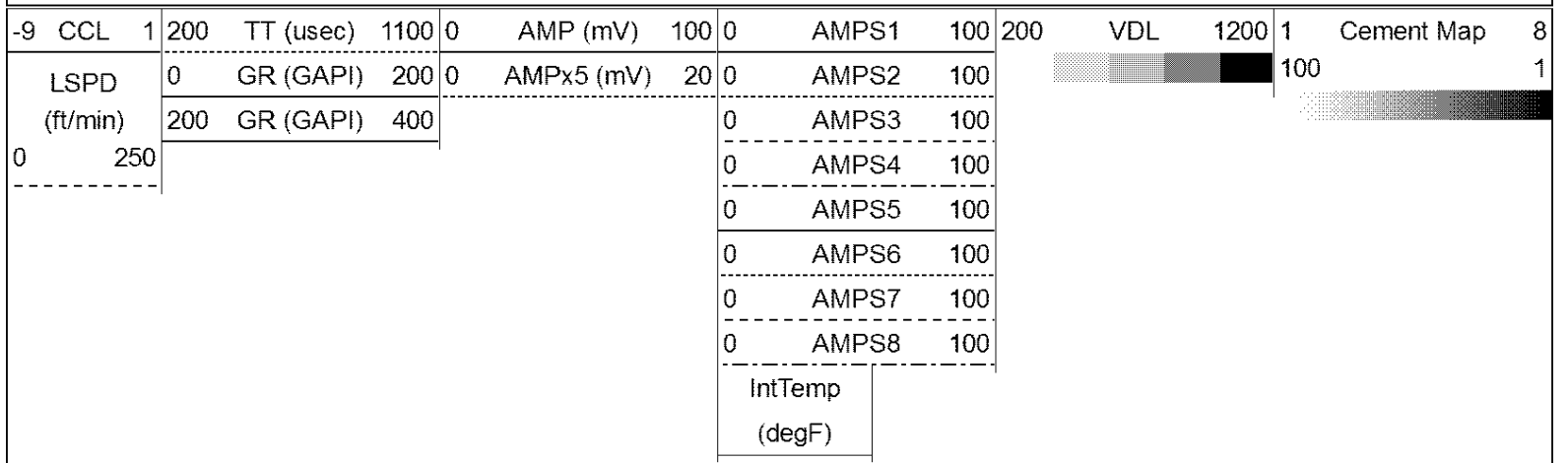


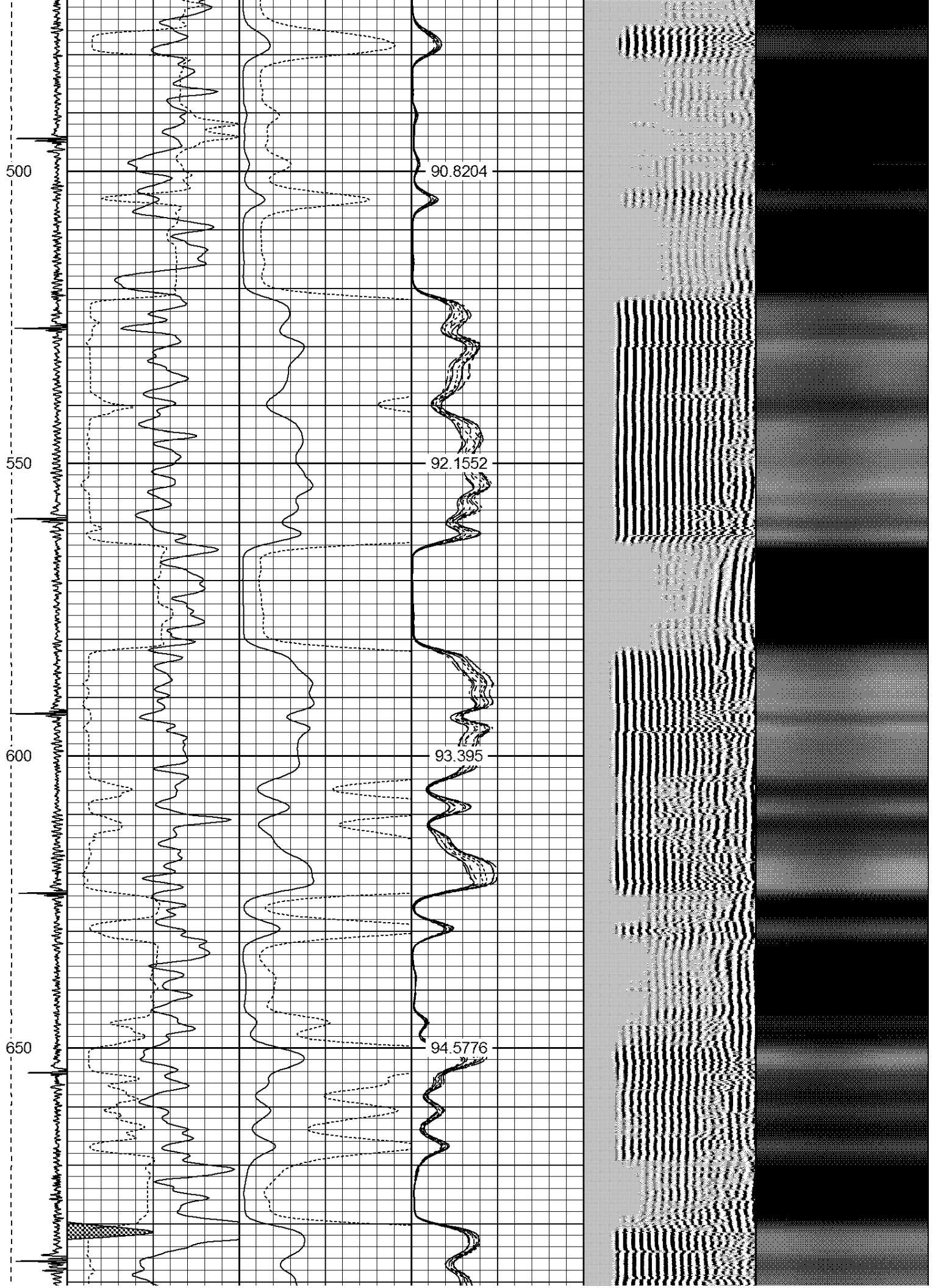


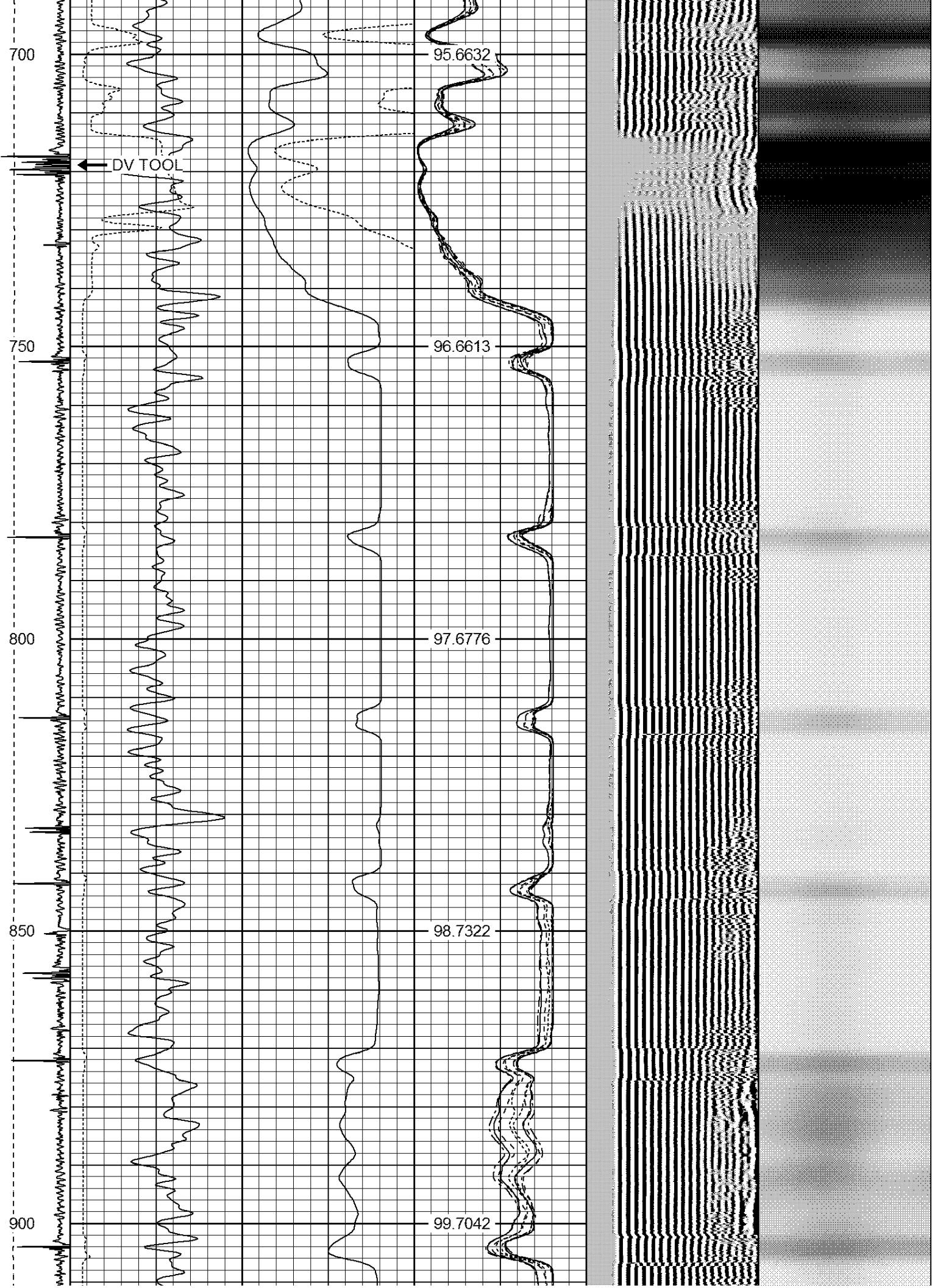


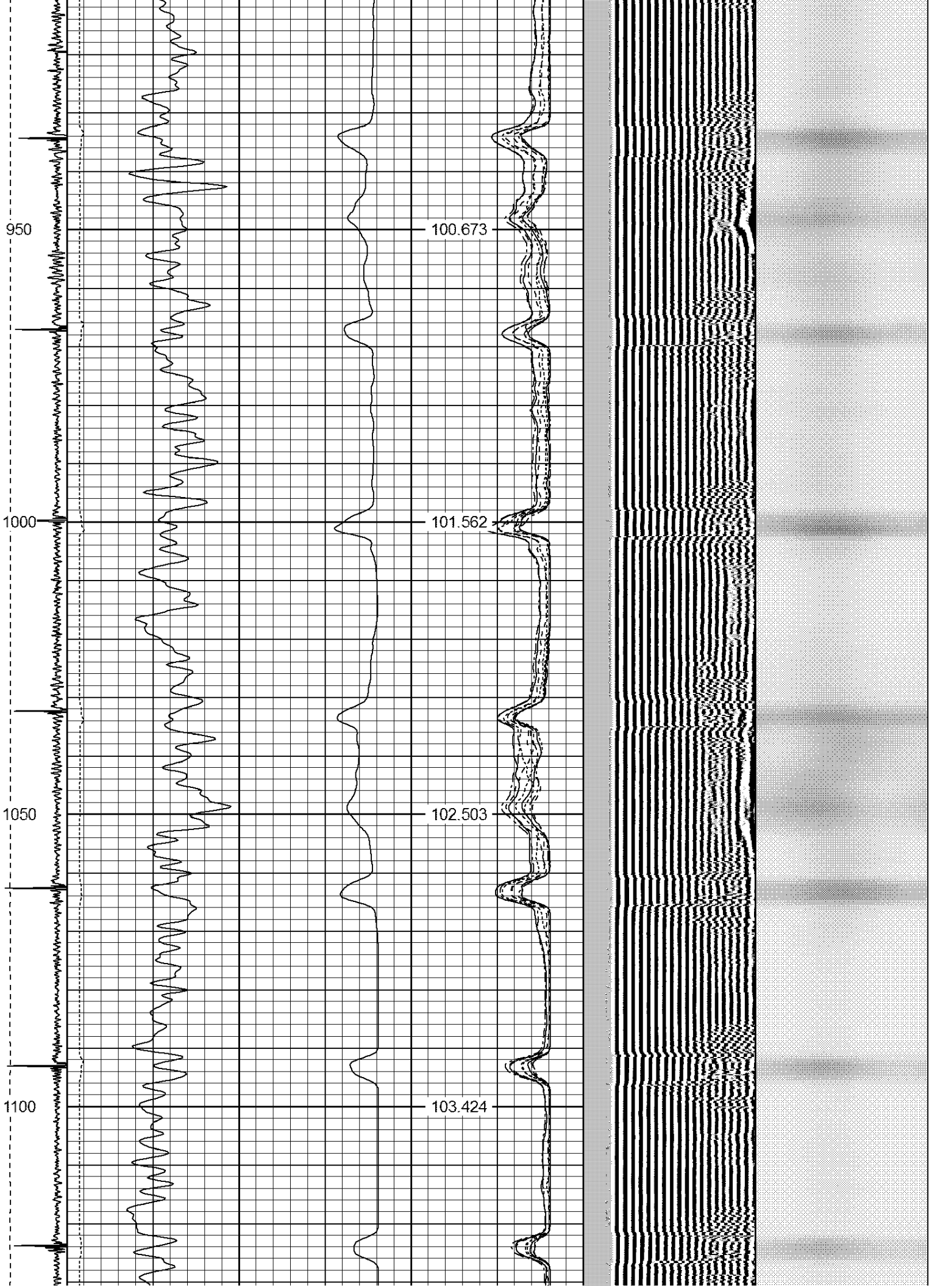
MAIN PASS

Database File: chikuma harry s gu b #1.db
 Dataset Pathname: pass2
 Presentation Format: ips_rbt
 Dataset Creation: Wed Feb 10 20:32:52 2016 by Log 7.0 B1
 Charted by: Depth in Feet scaled 1:240



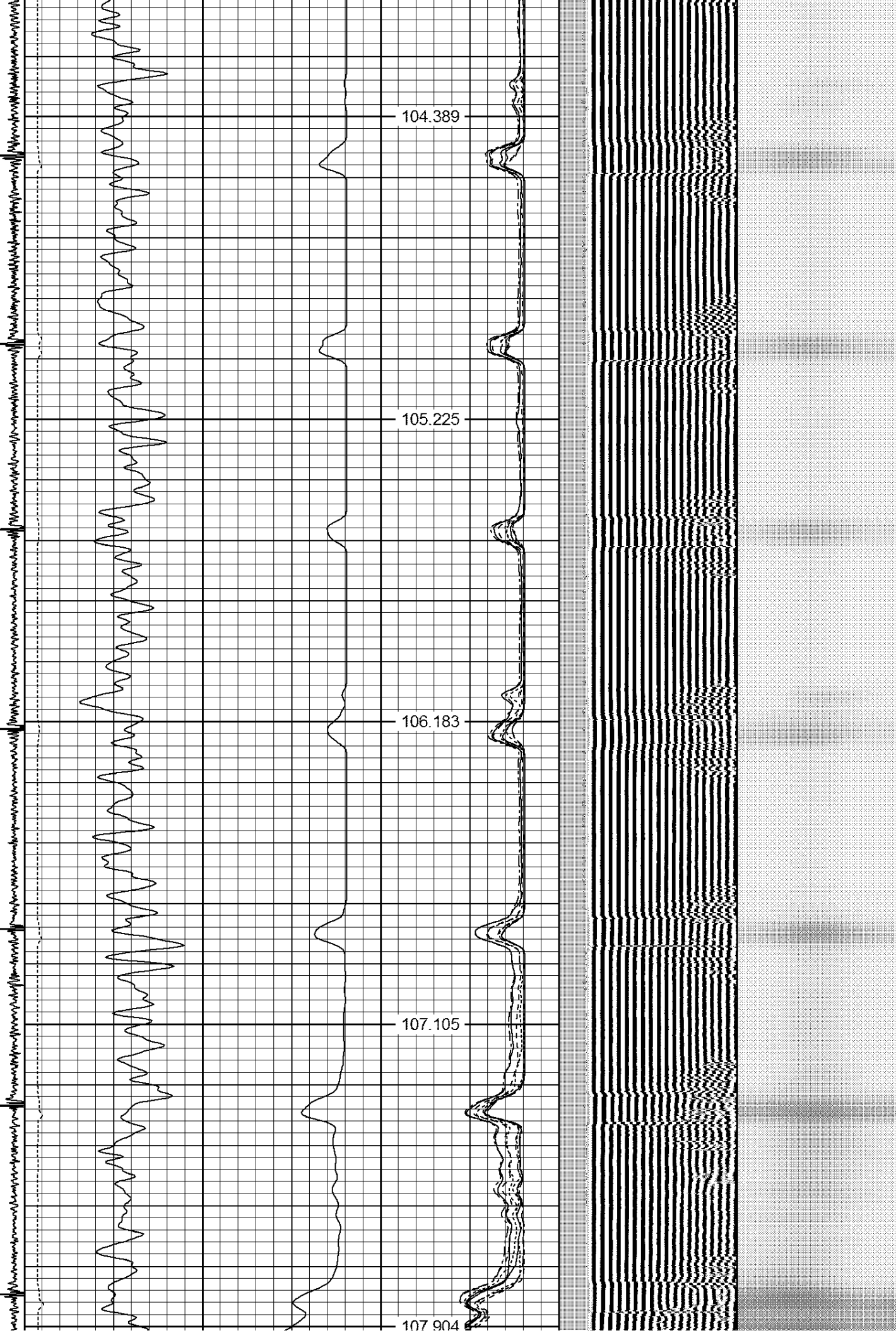


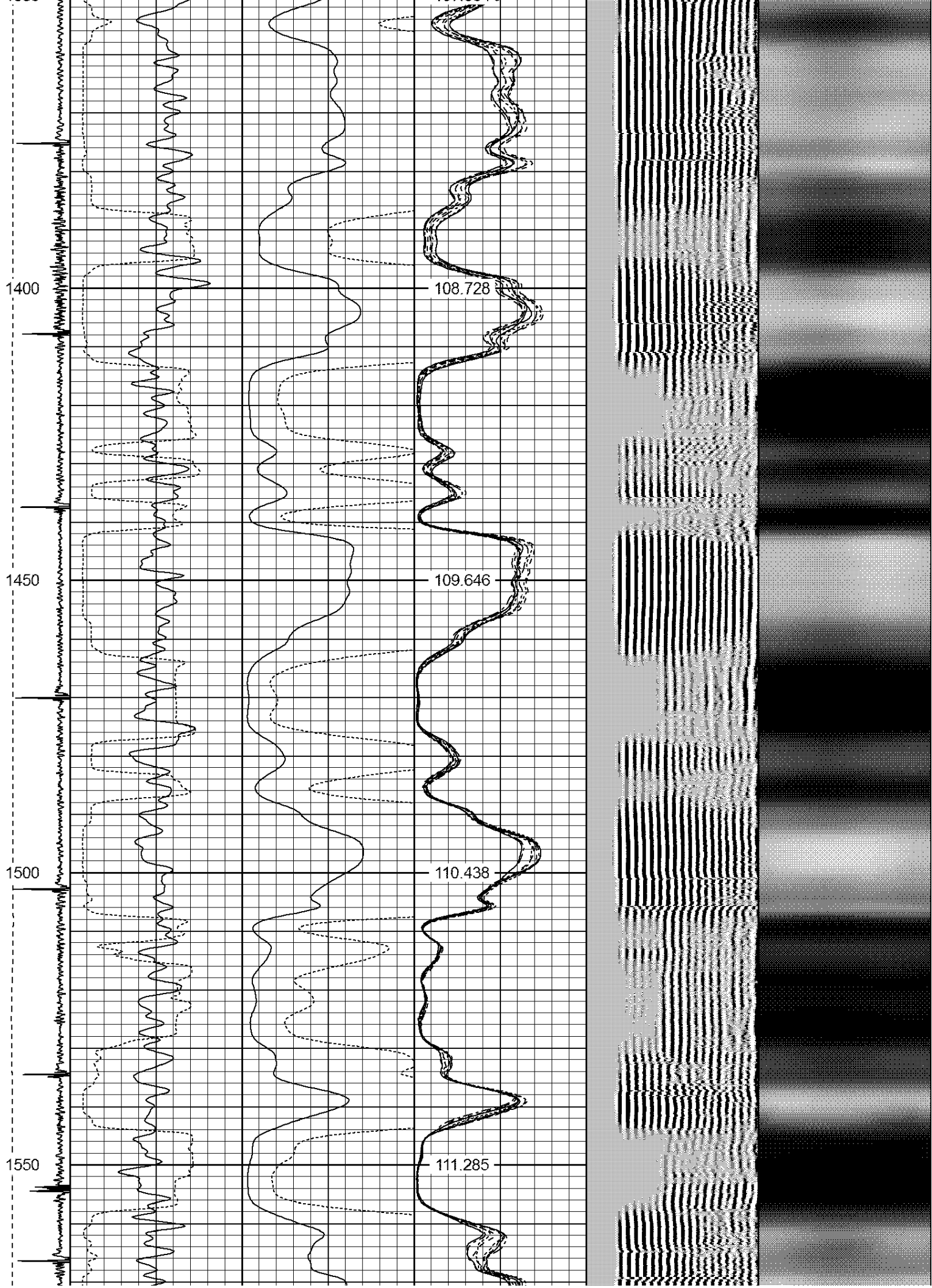




1150
1200
1250
1300
1350

104.389
105.225
106.183
107.105
107.904

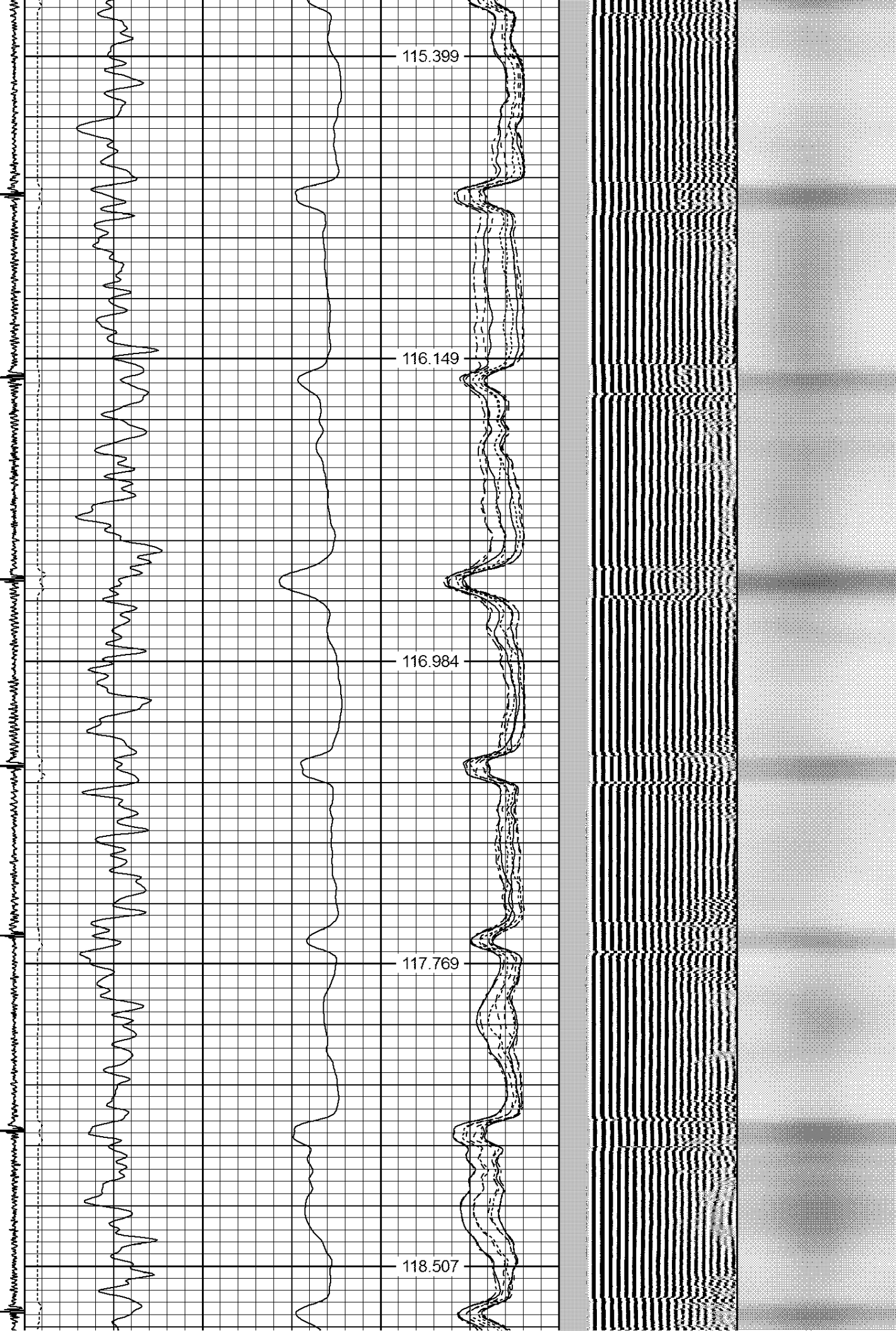


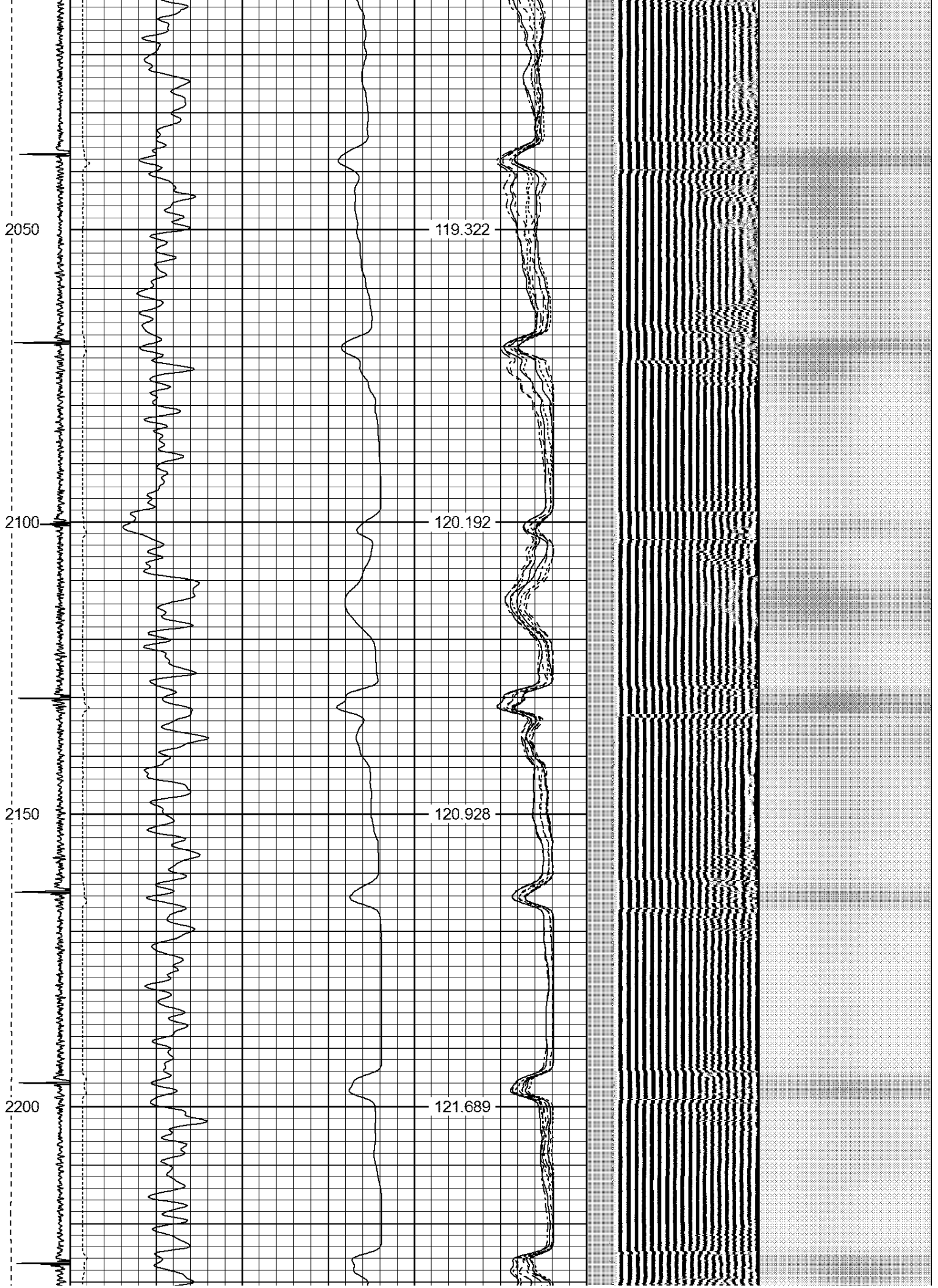




1800
1850
1900
1950
2000

115.399
116.149
116.984
117.769
118.507





2250

122.483

2300

123.099

2350

123.872

2400

124.556

2450

125.238



2500

2550

2600

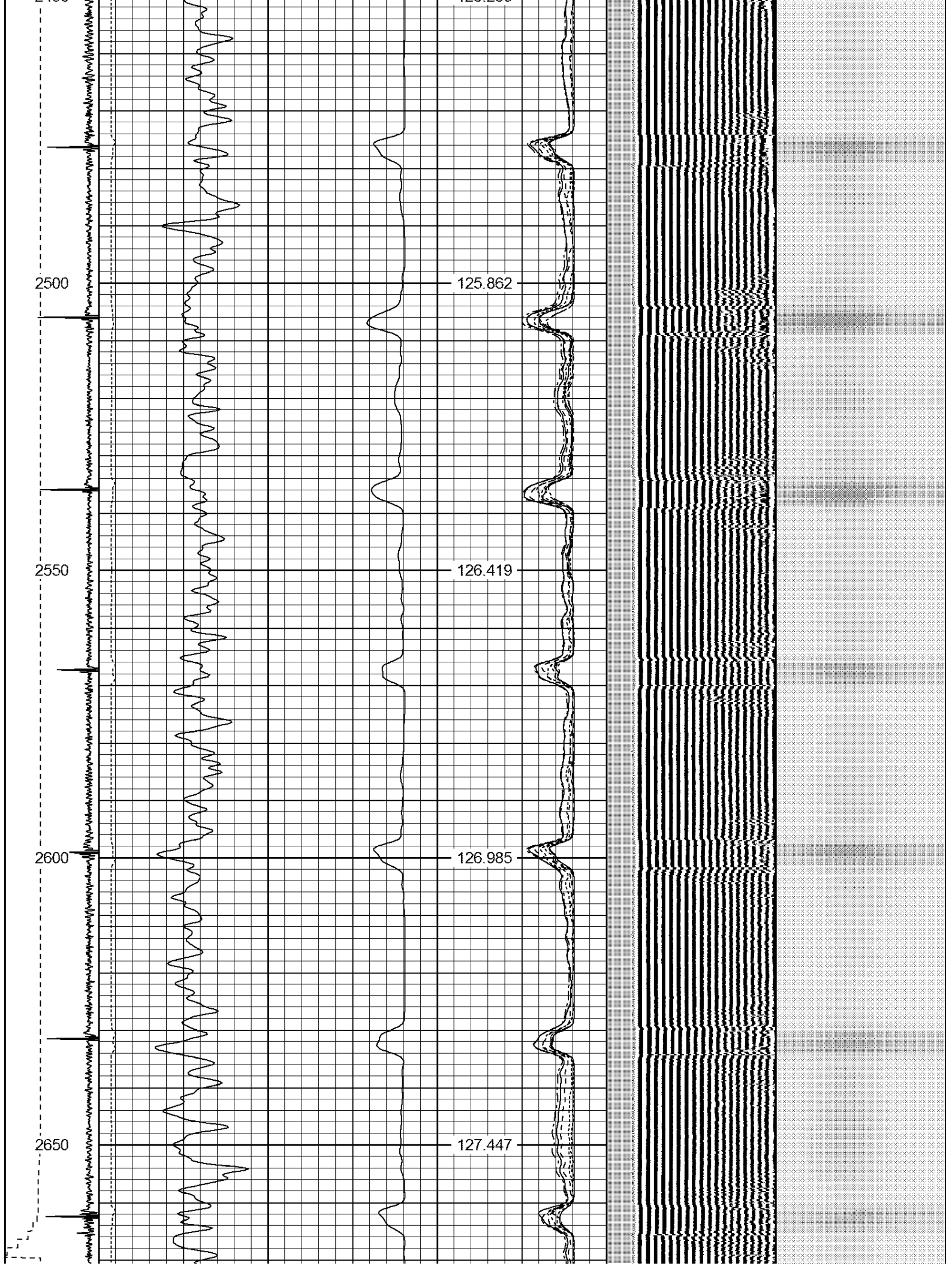
2650

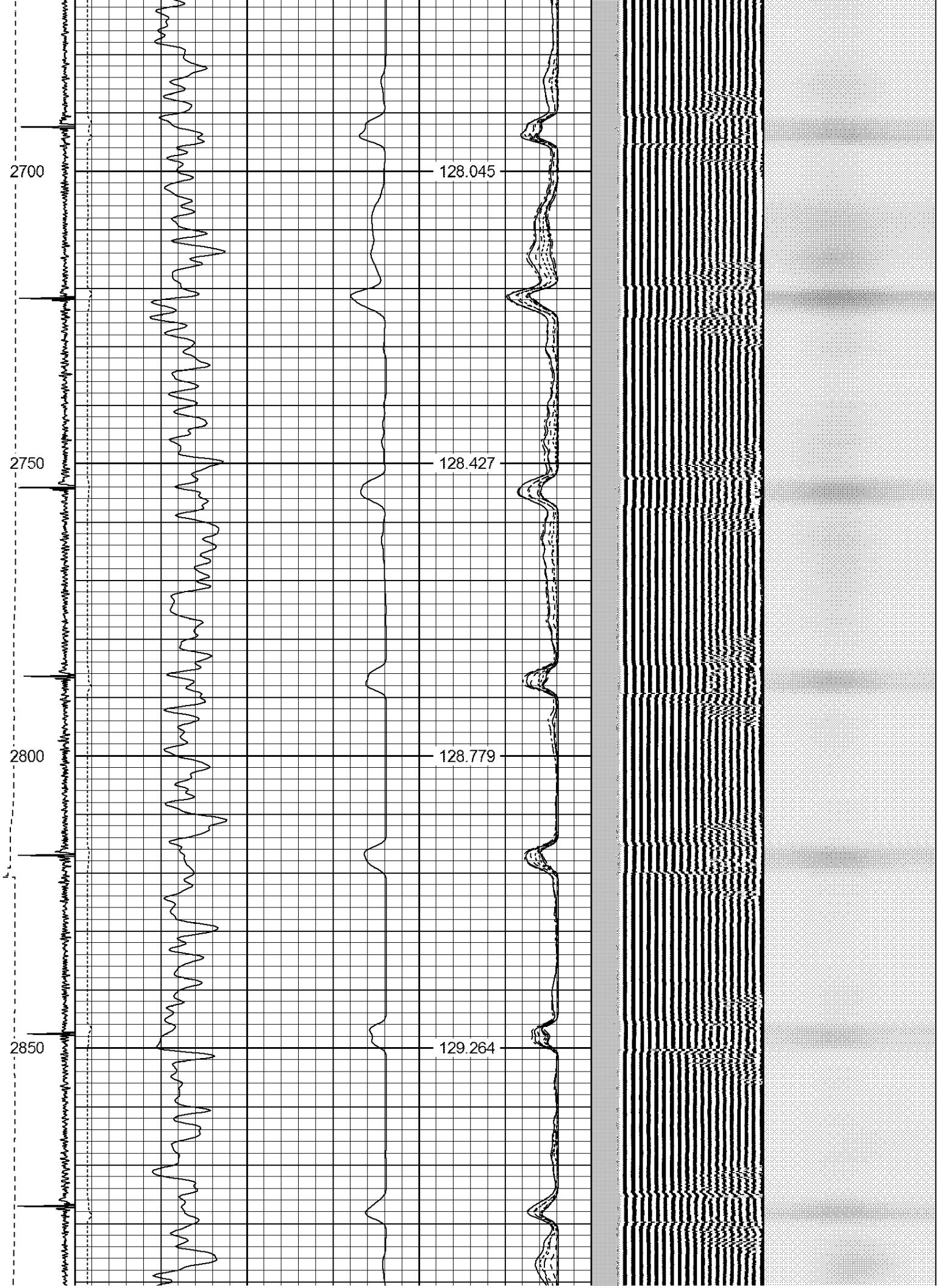
125.862

126.419

126.985

127.447

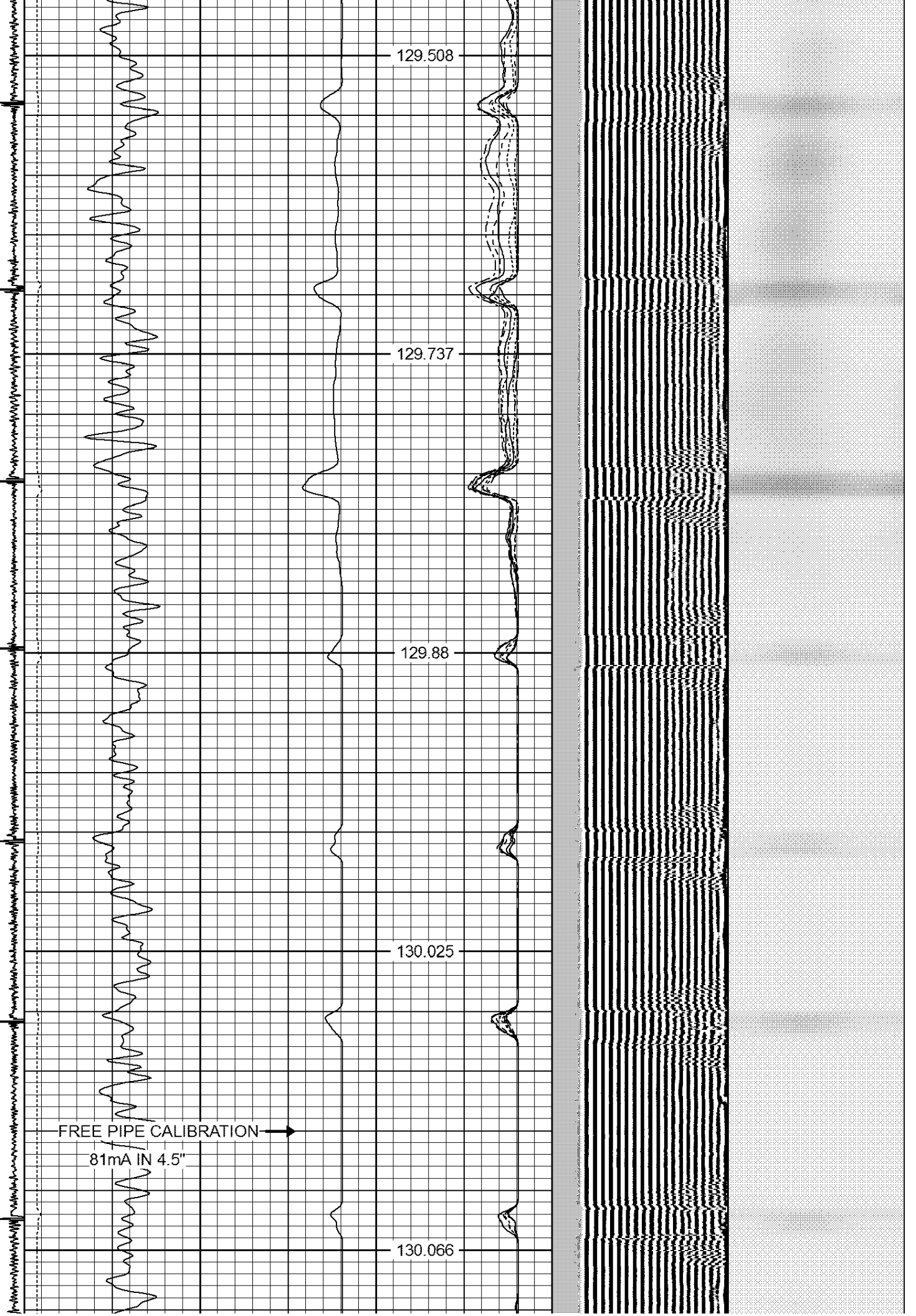


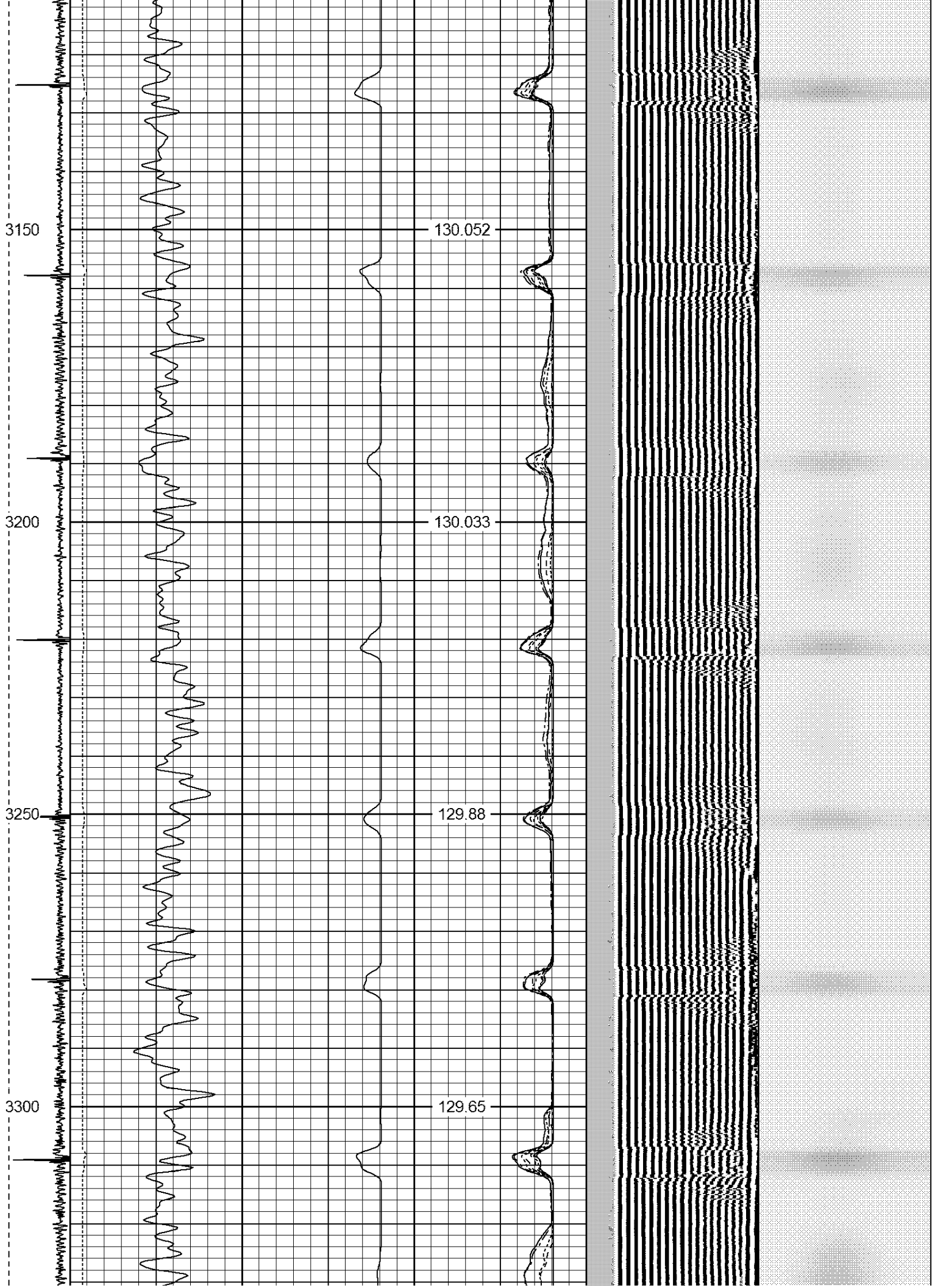


2900
2950
3000
3050
3100

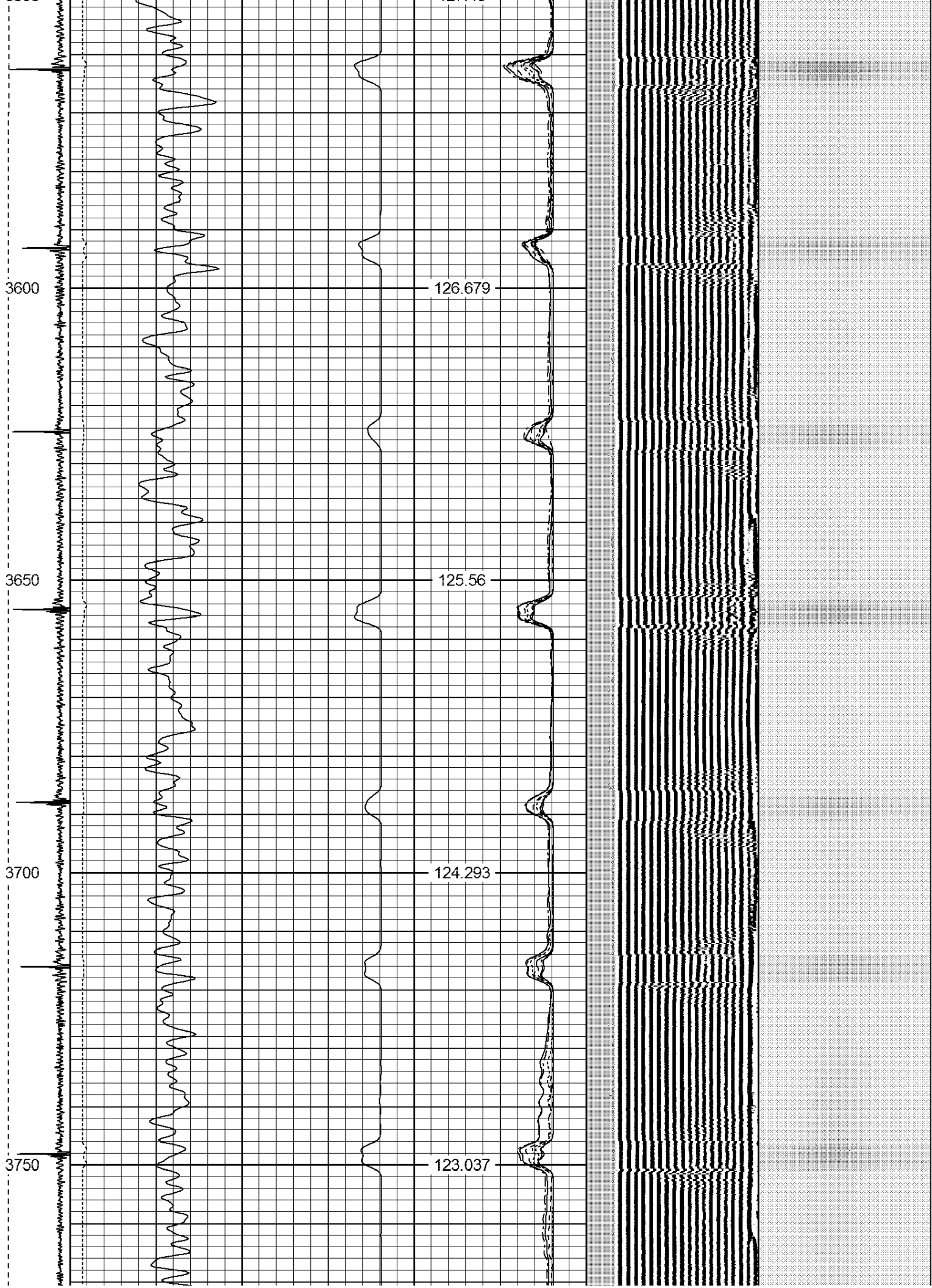
129.508
129.737
129.88
130.025
130.066

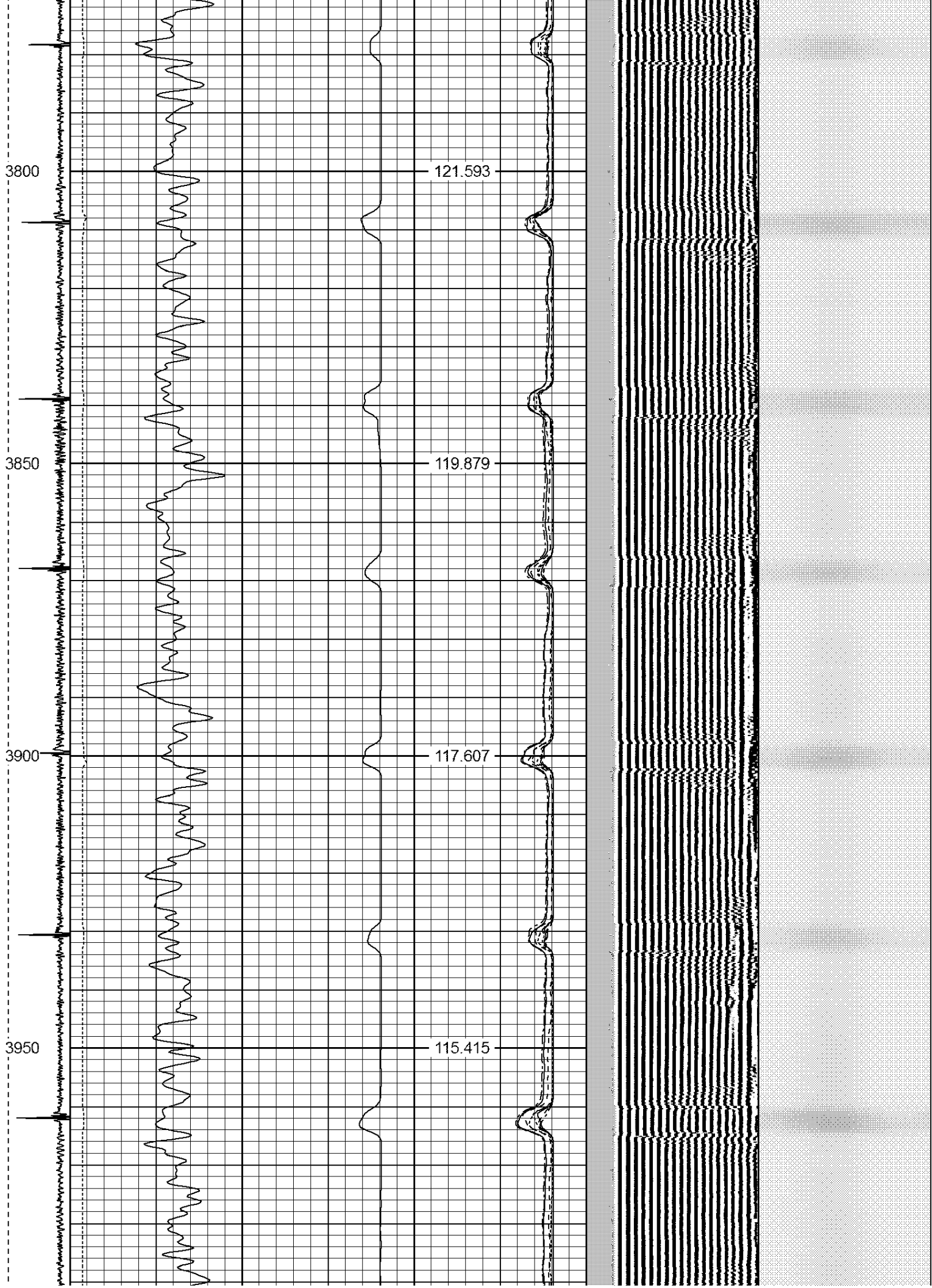
FREE PIPE CALIBRATION →
81mA IN 4.5"

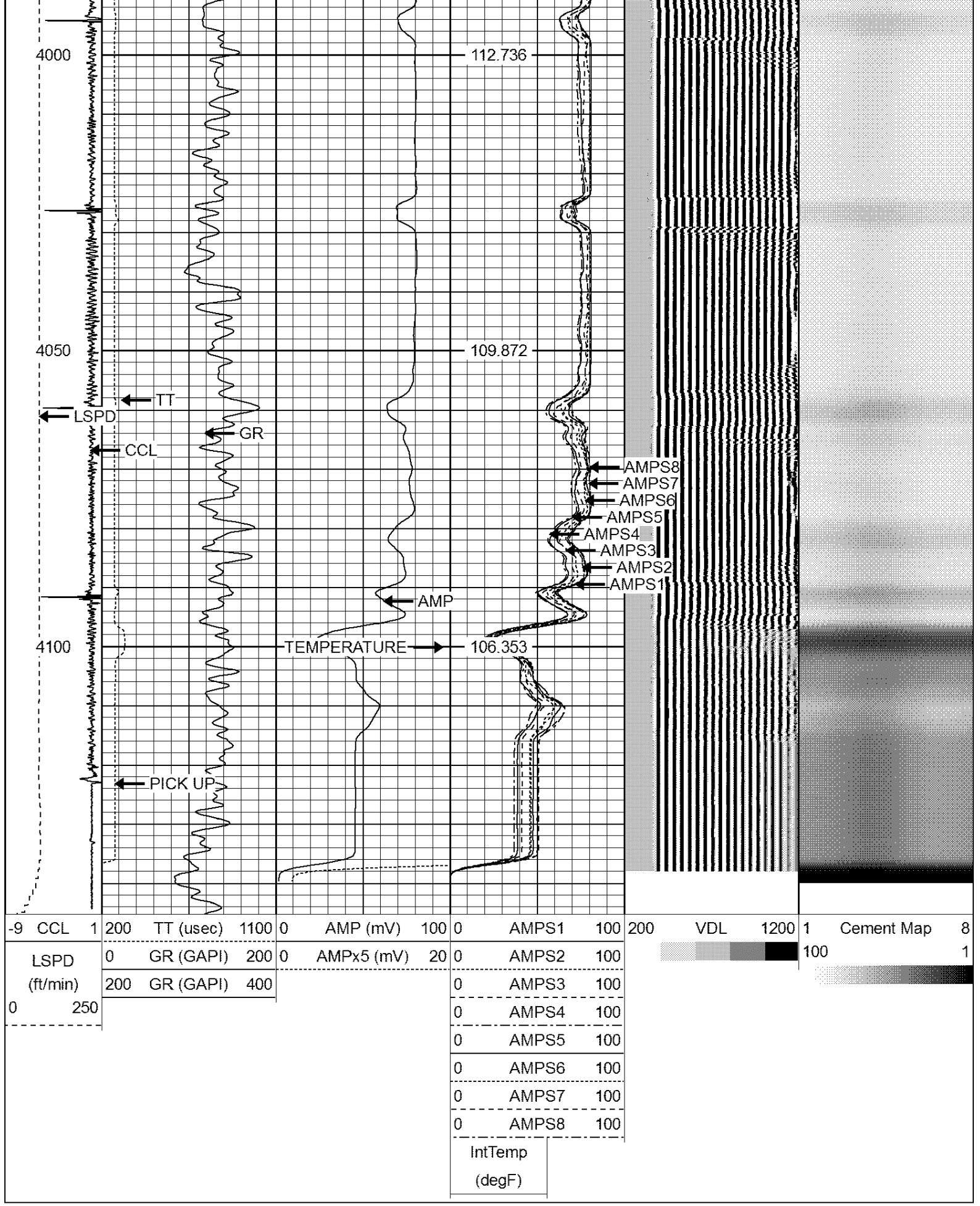












Calibration Report

Database File: chikuma harry s gu b #1.db
 Dataset Pathname: pass4

Gamma Ray Calibration Report

Serial Number: 275
 Tool Model: Probe
 Performed: Tue Sep 23 07:13:12 2014

Calibrator Value: 100.0 GAPI

Background Reading: 35.0 cps
 Calibrator Reading: 160.0 cps

Sensitivity: 1.0000 GAPI/cps

Compensated Neutron Calibration Report

Serial Number: 275
 Tool Model: Probe_B

CALIBRATION Wed Jul 30 08:47:19 2008

Detector	Readings	Target	Normalization
Short Space	5001.20 cps	0.00 cps	1.0000
Long Space	1029.31 cps	0.00 cps	1.0000

PRE-SURVEY VERIFICATION

	Detector	Readings	Measured	Target
1)	Short Space	cps		
	Long Space	cps	pu	pu
2)	Short Space	cps		
	Long Space	cps	pu	
3)	Short Space	cps		
	Long Space	cps	pu	

POST-SURVEY VERIFICATION

	Detector	Readings	Measured	Target
1)	Short Space	cps		
	Long Space	cps	pu	pu
2)	Short Space	cps		
	Long Space	cps	pu	pu
3)	Short Space	cps		
	Long Space	cps	pu	pu

Segmented Cement Bond Log Calibration Report

Serial Number: Base
 Tool Model: Probe

Calibration Casing Diameter: 4.500 in
 Calibration Depth: 785.125 ft

Master Calibration, performed Wed Feb 10 20:25:10 2016:

	Raw (v)		Calibrated (mv)		Results	
	Zero	Cal	Zero	Cal	Gain	Offset
3'	0.003	2.500	2.000	81.196	31.713	1.915
CAI	1.454	2.500				

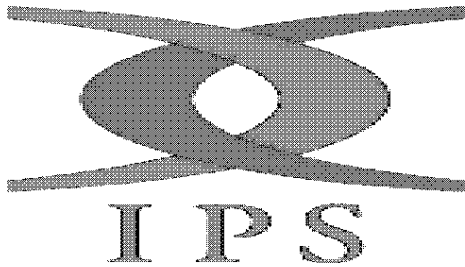
CAL	1.454	2.500	2.000	81.196	31.712	1.916
5'	0.003	2.500				
SUM						
S1	0.005	2.500	0.500	81.000	32.269	0.328
S2	0.004	2.500	0.500	81.000	32.246	0.385
S3	0.005	2.500	0.500	81.000	32.258	0.354
S4	0.004	2.500	0.500	81.000	32.251	0.372
S5	0.003	2.500	0.500	81.000	32.235	0.412
S6	0.004	2.500	0.500	81.000	32.256	0.359
S7	0.007	2.500	0.500	81.000	32.285	0.286
S8	0.005	2.500	0.500	81.000	32.267	0.331

Internal Reference Calibration, performed Tue Jun 05 07:53:42 2012:

	Raw (v)		Calibrated (v)		Results	
	Zero	Cal	Zero	Cal	Gain	Offset
CAL	0.000	0.000	1.454	2.500	1.000	0.000

Air Zero Calibration, performed Wed Feb 10 20:12:44 2016:

	Raw (v)		Calibrated (v)		Results	
	Zero		Zero		Offset	
3'	0.000		0.000		0.000	
5'	0.000		0.000		0.000	
SUM						
S1	0.000		0.000		0.000	
S2	0.000		0.000		0.000	
S3	0.000		0.000		0.000	
S4	0.000		0.000		0.000	
S5	0.000		0.000		0.000	
S6	0.000		0.000		0.000	
S7	0.000		0.000		0.000	
S8	0.000		0.000		0.000	



Company ANADARKO PETROLEUM CORPORATION
 Well CHIKUMA HARRY S GU "B" #1
 Field WATTENBERG
 County WELD
 State CO