



**RAIDIAL CEMENT BOND
GAMMA RAY
CCL**

Company KERR-MCGEE OIL AND GAS Well CHIKUMA HARRY S GU "B" #1 Field DJ BASIN County WELD State COLORADO	Company KERR-MCGEE OIL AND GAS Well CHIKUMA HARRY S GU "B" #1 Field DJ BASIN County WELD State COLORADO
Location: API #:	
LAT: 40.05410 LONG: -104.83540 SEC: 13 TWP: 1N RGE: 67W	
Permanent Datum Log Measured From Drilling Measured From	GROUND LEVEL KELLY BUSHING KELLY BUSHING
	Elevation 4914 FT 4925 FT 4914 FT

Date	04-FEB-2016	
Run Number	ONE	
Depth Driller	8100 FT	
Depth Logger	1750 FT	
Bottom Logged Interval	1700 FT	
Top Log Interval	SURFACE	
Open Hole Size	7.875 IN	
Type Fluid	WATER	
Density / Viscosity	8.3#	
Max. Recorded Temp.	91 F	
Estimated Cement Top		
Time Well Ready	10:00	
Time Logger on Bottom	11:00	
Equipment Number	W-062	
Location	WINDSOR	
Recorded By	B. NORRIS	
Witnessed By	MR NATE WINDHOLZ	

	Borehole Record		Tubing Record	
	Bit	From	To	Size
Casing Record				
Surface String		8.63 IN	24#	Top SURFACE
Prot. String				Bottom 208FT
Production String		4.5 IN	11.6#	SURFACE
Liner				8099 FT

<<< Fold Here >>>

All interpretations are opinions based on inferences from electrical or other measurements and we cannot and do not guarantee the accuracy or correctness of any interpretation, and we shall not, except in the case of gross or willful negligence on our part, be liable or responsible for any loss, costs, damages, or expenses incurred or sustained by anyone resulting from any interpretation made by any of our officers, agents or employees. These interpretations are also subject to our general terms and conditions set out in our current Price Schedule.

Comments

FREE PIPE CALIBRATION DONE AT 11 35 FT
 FREE PIPE READING EQUALS 82 mV
 THANK YOU FOR USING CUTTERS WIRELINE

WE APPRECIATE YOUR BUSINESS, MESA WIRELINE LLC, GRAND JUNCTION CO. (970) 257-04

Calibration Report

Database File: anadqarko_rcbl_020416.db
 Dataset Pathname: pass15.2
 Dataset Creation: Thu Feb 04 11:40:13 2016 by Calc SCH 110630

Temperature Calibration Report

Serial Number: 060110
 Tool Model: 1.375TEMP
 Performed: Sun Jun 03 16:49:35 2012

	Reference	Reading
Low Reference:	1.00 degF	10.00 cps
High Reference:	100.00 degF	1000.00 cps
Gain:	0.10	
Offset:	0.00	
Delta Spacing	1	

Gamma Ray Calibration Report

Serial Number: 060109
 Tool Model: Probe
 Performed: Mon Jan 26 09:19:58 2009

Calibrator Value: 185.2 GAPI

Background Reading: 4.8 cps
 Calibrator Reading: 200.0 cps

Sensitivity: 0.9487 GAPI/cps

Segmented Cement Bond Log Calibration Report

Serial Number: 060113_45
 Tool Model: Probe

Calibration Casing Diameter: 5.500 in
 Calibration Depth: 1724.950 ft

Master Calibration, performed Thu Feb 04 11:08:05 2016:

	Raw (v)		Calibrated (mv)		Results	
	Zero	Cal	Zero	Cal	Gain	Offset
3'	0.000	0.700	0.000	82.000	117.143	0.000
CAL	0.000	0.507				
5'	0.000	0.266	0.000	82.000	308.649	0.000
SUM						
S1	0.000	0.435	0.000	100.000	230.048	0.000
S2	0.000	0.403	0.000	100.000	248.100	0.000
S3	0.000	0.345	0.000	100.000	289.993	0.000
S4	0.000	0.342	0.000	100.000	292.749	0.000
S5	0.000	0.363	0.000	100.000	275.343	0.000
S6	0.000	0.392	0.000	100.000	255.059	0.000
S7	0.000	0.396	0.000	100.000	252.364	0.000
S8	0.000	0.338	0.000	100.000	295.975	0.000

Internal Reference Calibration, performed Wed Dec 31 17:00:00 1969:

	Raw (v)		Calibrated (v)		Results	
	Zero	Cal	Zero	Cal	Gain	Offset
CAL	0.000	0.000	0.000	0.507	1.000	0.000

Air Zero Calibration, performed Wed Dec 31 17:00:00 1969:

	Raw (v)		Calibrated (v)		Results	
	Zero		Zero		Offset	
3'	0.000		0.000			0.000
5'	0.000		0.000			0.000
SUM						
S1	0.000		0.000			0.000

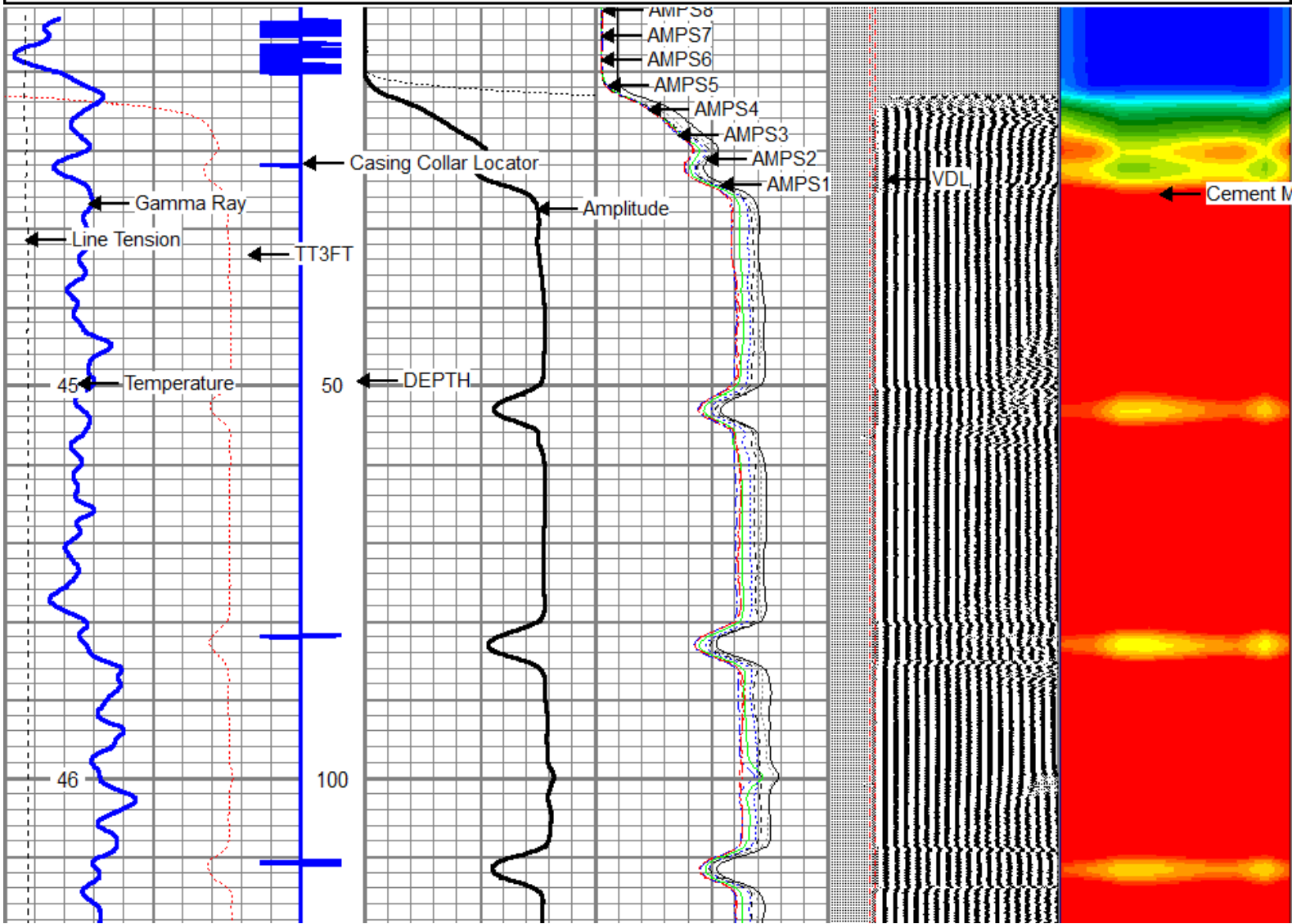
S1	0.000	0.000	0.000
S2	0.000	0.000	0.000
S3	0.000	0.000	0.000
S4	0.000	0.000	0.000
S5	0.000	0.000	0.000
S6	0.000	0.000	0.000
S7	0.000	0.000	0.000
S8	0.000	0.000	0.000

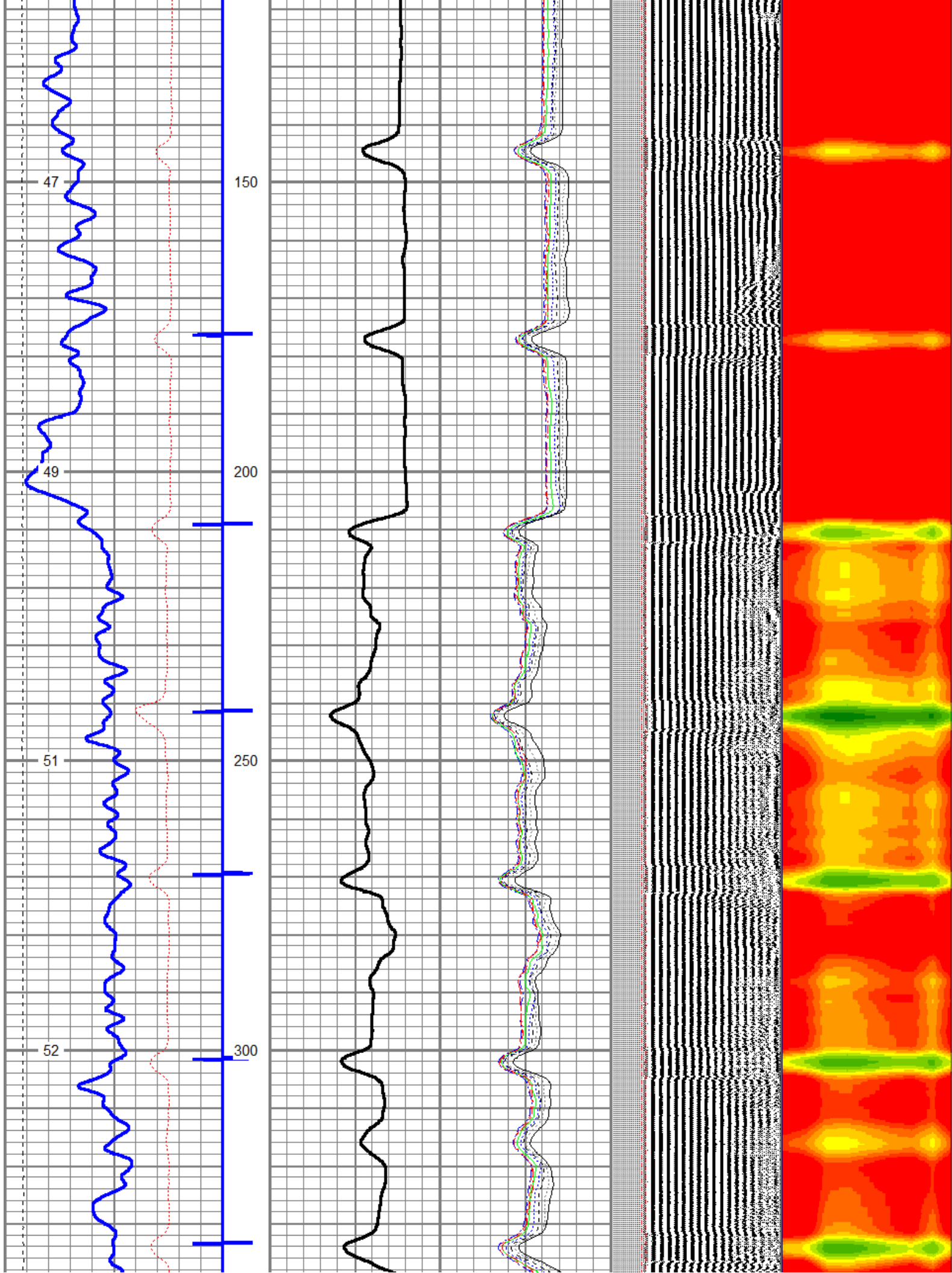


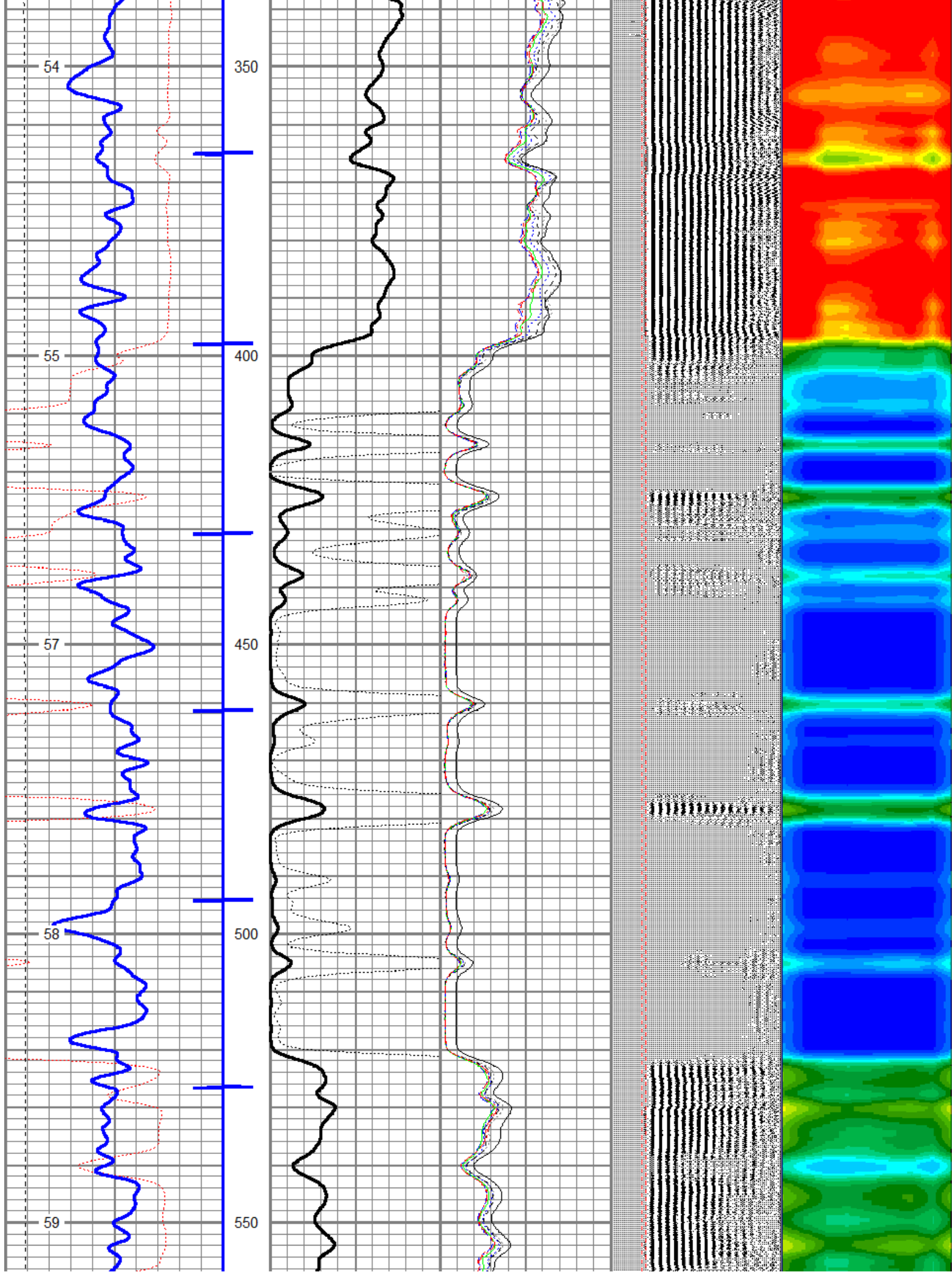
MAIN PASS 0 PSI

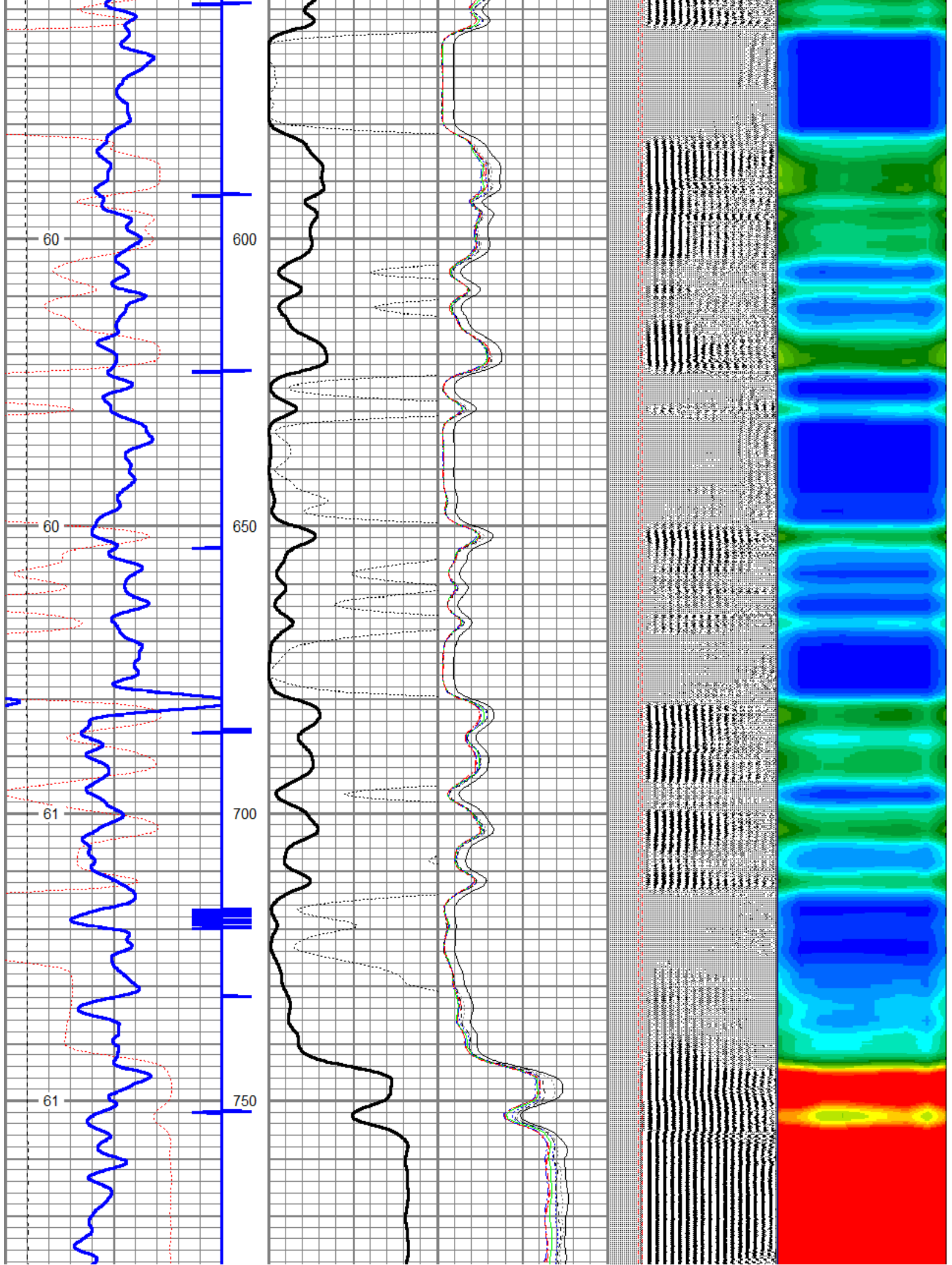
Database File: anadqarko_rcbl_020416.db
 Dataset Pathname: pass15.3
 Presentation Format: rbl55
 Dataset Creation: Thu Feb 04 12:04:27 2016 by Calc SCH 110630
 Charted by: Depth in Feet scaled 1:240

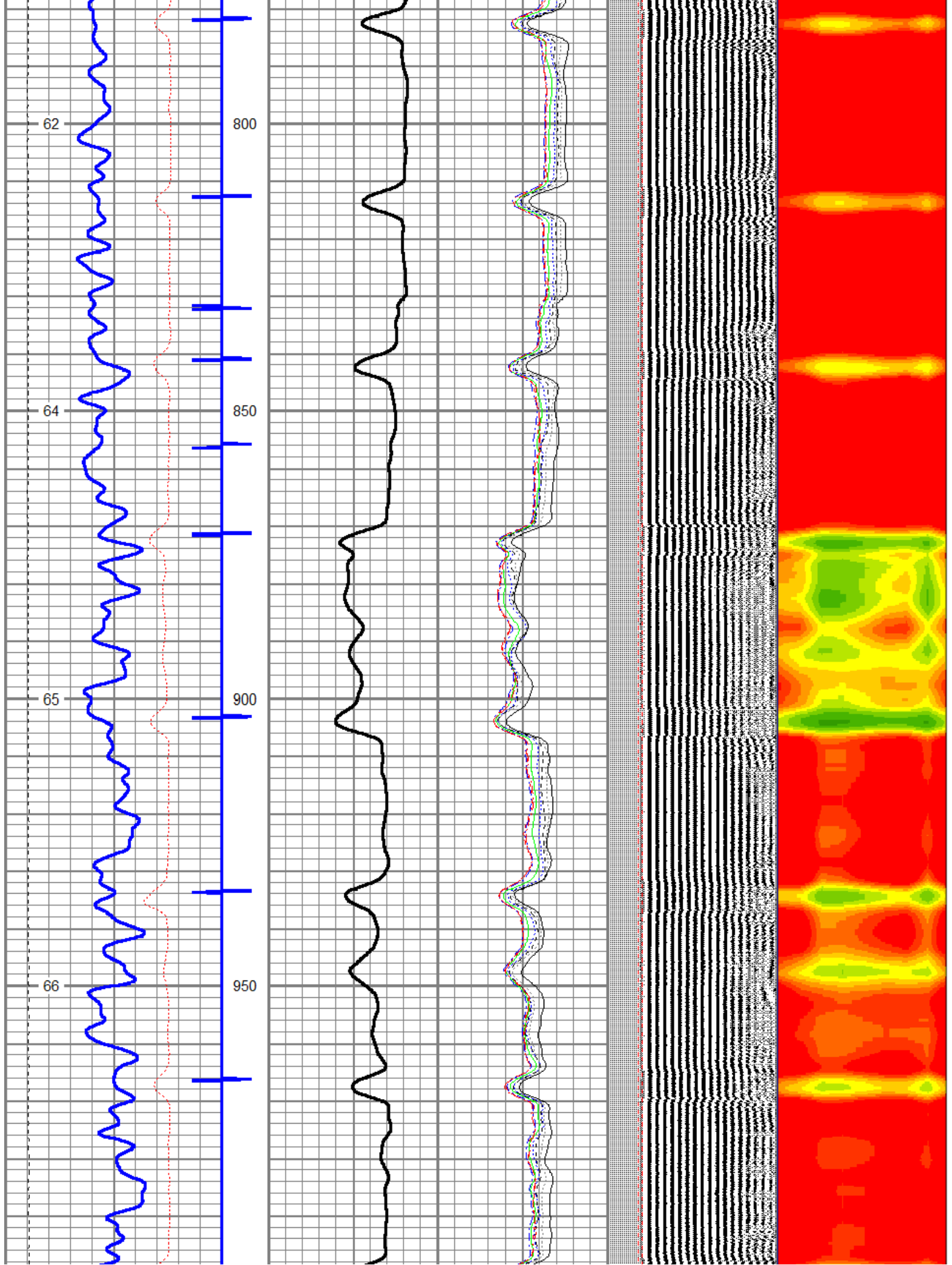
343	TT (usec)	243	0	Amplitude (mV)	100	-5	AMPS2	150	200	VDL	1200	Cement Map
0	GR (GAPI)	200	Amplified Amplitude			-5	AMPS3	150	Free Pipe Gate		1	80
0	LTEN (lb)	4000	0	(mV)	10	-5	AMPS4	150				
TEMP (degF)		CCL				-5	AMPS5	150				
						-5	AMPS6	150				
						-5	AMPS7	150				
						-5	AMPS8	150				
						-5	AMPS1	150				

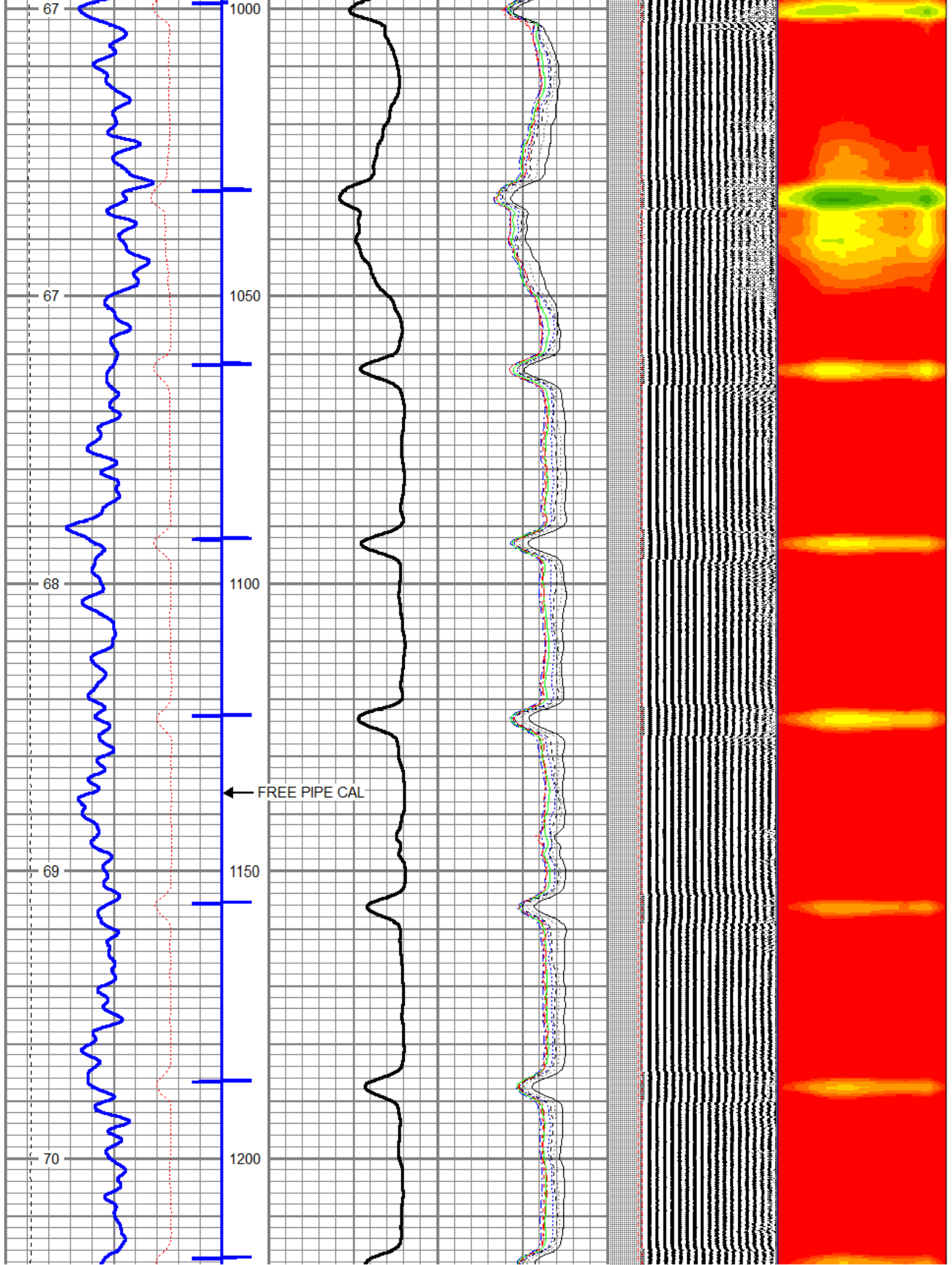


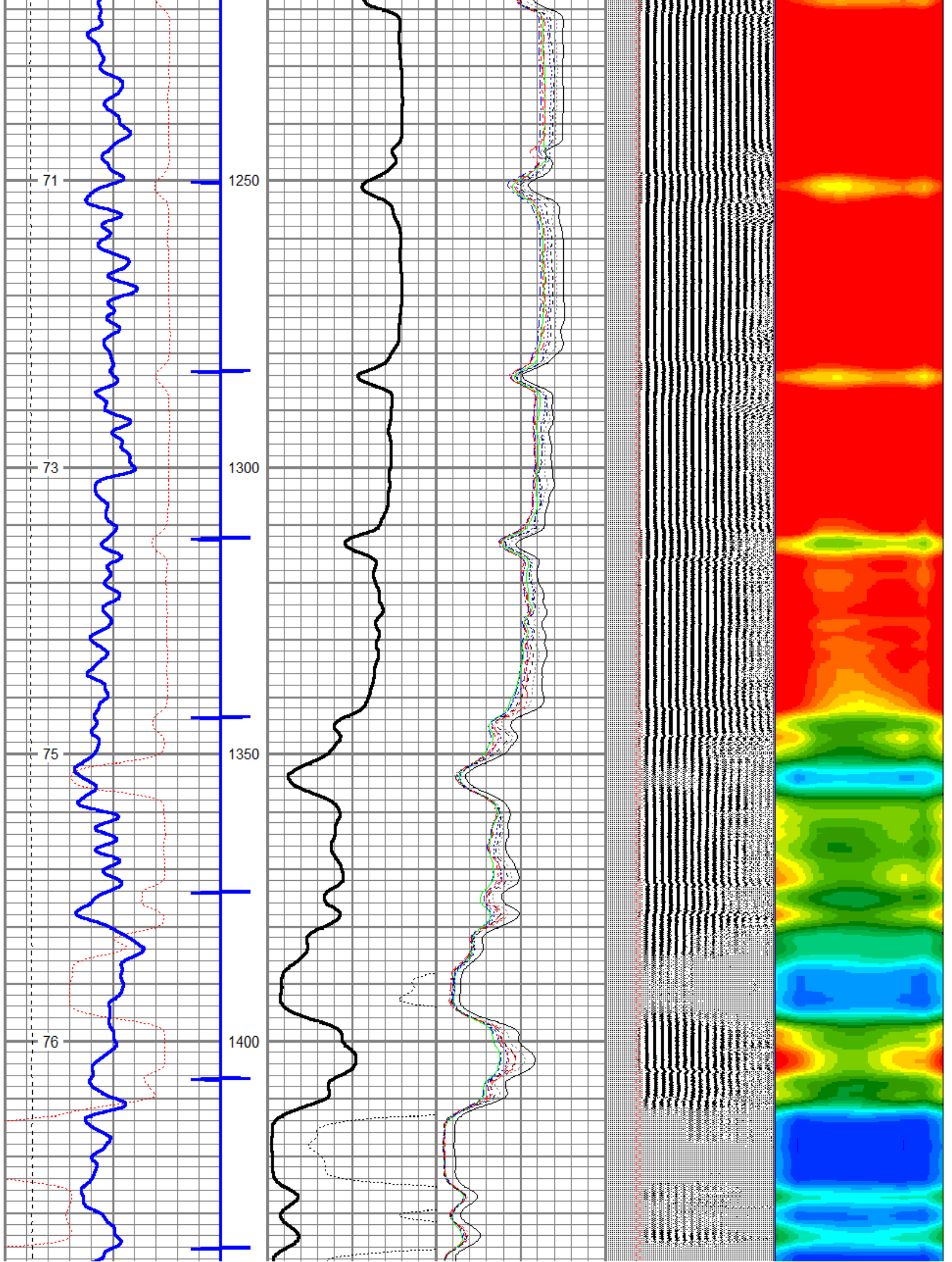


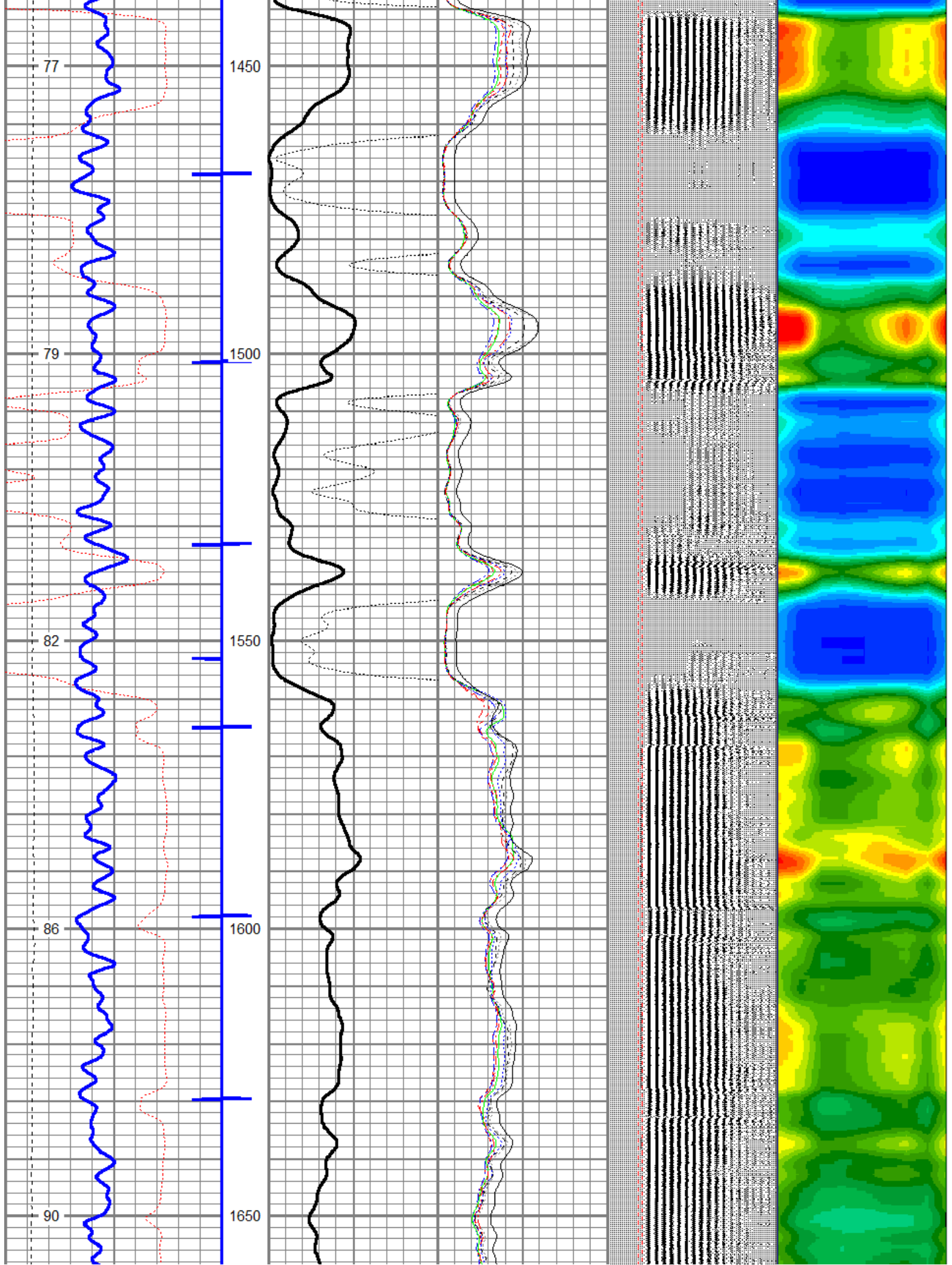


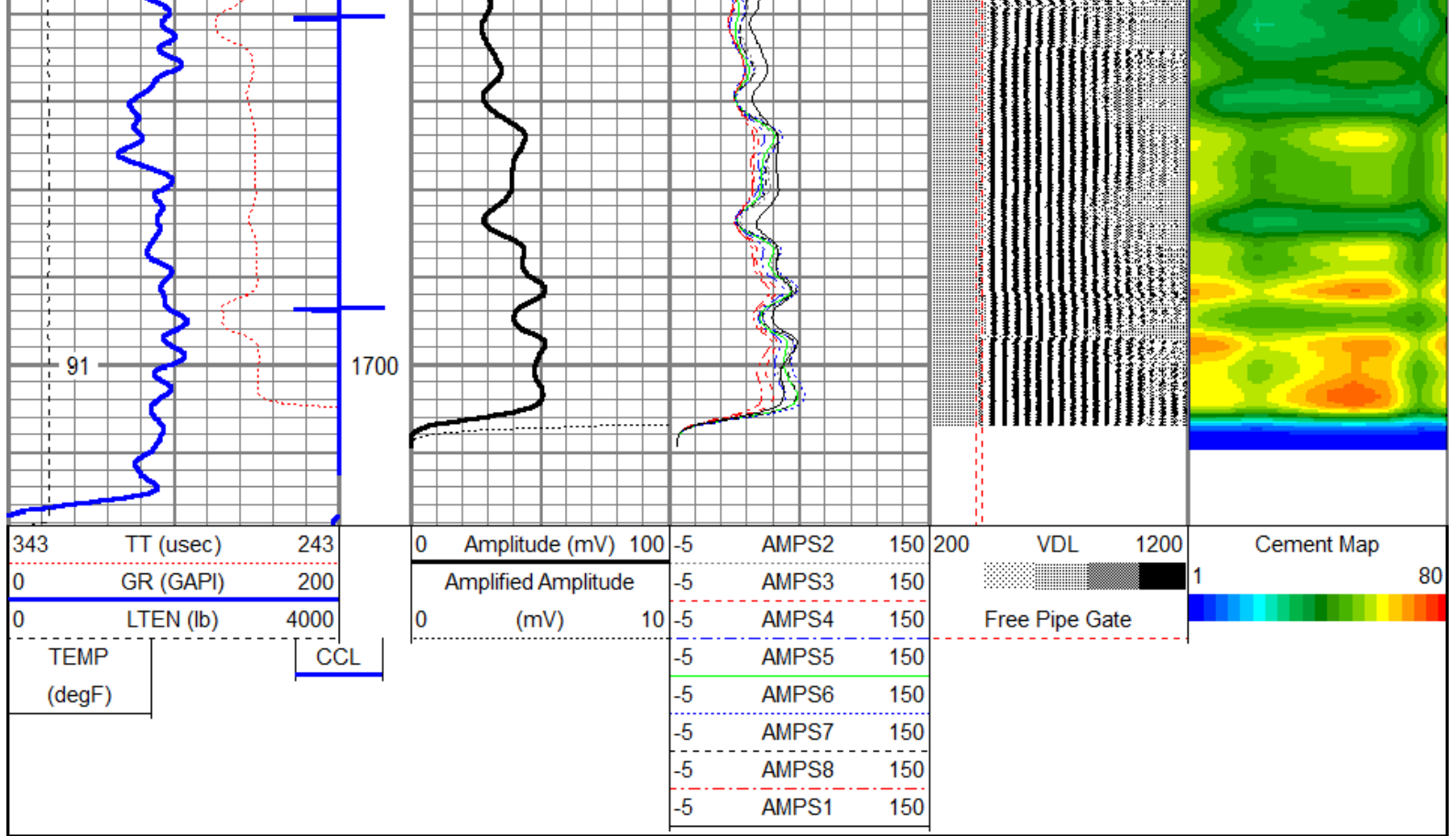












Sensor	Offset (ft)	Schematic	Description	Len (ft)	OD (in)	Wt (lb)
			Probe	2.86	2.75	40.00
			RBT-Probe (060113_45) Probe 2.75" Radii Bond Tool	9.39	2.75	90.00
WF3FT	12.30					
WF3CAL	12.30					
WF3S1	12.30					
WF3S2	12.30					
WF3S3	12.30					
WF3S4	12.30					
WF3S5	12.30					
WF3S6	12.30					
WF3S7	12.30					
WF3S8	12.30					

WVF5FT	11.30				
CCL	4.75				
GR	2.25				
TEMP	0.08				

Dataset: anadqarko_rcbl_020416.db: field/well/run1/pass15.2
 Total Length: 20.36 ft
 Total Weight: 230.00 lb
 O.D.: 2.75 in



Company KERR-MCGEE OIL AND GAS
Well CHIKUMA HARRY S GU "B" #1
Field DJ BASIN
County WELD
State COLORADO