



**RAIDIAL CEMENT BOND
GAMMA RAY
CCL**

Company **KERR-MCGEE OIL AND GAS**
 Well **CHIKUMA HARRY S GU "B" #1**
 Field **DJ BASIN**
 County **WELD** State **COLORADO**

Location: **API # : 0512308588**
 LAT: 40.05410 LONG: -104.83540
 SEC 13 TWP 1N RGE 67W
 Permanent Datum **GROUND LEVEL** Elevation **4914 FT**
 Log Measured From **KELLY BUSHING**
 Drilling Measured From **KELLY BUSHING** 10FT
 Other Services
 Elevation
 K.B. 4924 FT
 D.F. 4925 FT
 G.L. 4914 FT

Date **19 - JAN - 2016**
 Run Number **ONE**
 Depth Driller **8100 FT**
 Depth Logger **820 FT**
 Bottom Logged Interval **810 FT**
 Top Log Interval **SURFACE**
 Open Hole Size **7.875 IN**
 Type Fluid **WATER**
 Density / Viscosity **8.3#**
 Max. Recorded Temp.
 Estimated Cement Top
 Time Well Ready **ROA**
 Time Logger on Bottom **13:45**
 Equipment Number **W-061**
 Location **WINDSOR**
 Recorded By **B. NORRIS**
 Witnessed By **M.R.NATE WINDHOLZ**

Run Number	Borehole Record			Tubing Record			
	Bit	From	To	Size	Weight	From	To
Casing Record							
Surface String		8.63 IN		Wgt/ft		Top	Bottom
Prot. String				24#		SURFACE	208FT
Production String		4.5 IN		11.6#		SURFACE	8099 FT
Liner							

<<< Fold Here >>>

All interpretations are opinions based on inferences from electrical or other measurements and we cannot and do not guarantee the accuracy or correctness of any interpretation, and we shall not, except in the case of gross or willful negligence on our part, be liable or responsible for any loss, costs, damages, or expenses incurred or sustained by anyone resulting from any interpretation made by any of our officers, agents or employees. These interpretations are also subject to our general terms and conditions set out in our current Price Schedule.

Comments

TAGGED IN MUD 30 FT ABOVE RETAINER
 FREE PIPE READING EQUALS 82 mV
 THANK YOU FOR USING CUTTERS WIRELINE

Calibration Report

Database File: anadarko11916.db
 Dataset Pathname: pass10
 Dataset Creation: Tue Jan 19 14:00:41 2016 by Log Std Casedhole 09061

Serial Number: 275D_with_INC
 Tool Model: 275D_INC
 Performed: Tue Jan 15 11:42:10 2013

Calibrator Value: 300.0 GAPI

Background Reading: 0.0 cps
 Calibrator Reading: 400.0 cps

Sensitivity: 0.7375 GAPI/cps

Inclinometer Calibration Report

Performed: Fri Apr 04 16:42:15 2008

	Low Read.	High Read.	Low Ref.	High Ref.	
X Accelerometer	-3579.00	3617.00	-1.00	1.00	gee
Y Accelerometer	-3671.40	3529.80	-1.00	1.00	gee
Z Accelerometer	-20.40	3584.00	0.00	1.00	gee

Segmented Cement Bond Log Calibration Report

Serial Number: 110217
 Tool Model: Probe

Calibration Casing Diameter: 5.500 in
 Calibration Depth: 788.338 ft

Master Calibration, performed Tue Jan 19 13:59:27 2016:

	Raw (v)		Calibrated (mv)		Results	
	Zero	Cal	Zero	Cal	Gain	Offset
3'	0.000	0.305	0.000	71.921	235.605	0.000
CAL	0.000	1.465				
5'	0.000	0.220	0.000	71.921	327.521	0.000
SUM						
S1	0.000	0.301	0.000	100.000	332.131	0.000
S2	0.000	0.265	0.000	100.000	377.442	0.000
S3	0.000	0.260	0.000	100.000	384.312	0.000
S4	0.000	0.249	0.000	100.000	400.802	0.000
S5	0.000	0.308	0.000	100.000	324.410	0.000
S6	0.000	0.308	0.000	100.000	324.205	0.000
S7	0.000	0.346	0.000	100.000	289.051	0.000
S8	0.000	0.328	0.000	100.000	305.307	0.000

Internal Reference Calibration, performed Wed Dec 31 17:00:00 1969:

	Raw (v)		Calibrated (v)		Results	
	Zero	Cal	Zero	Cal	Gain	Offset
CAL	0.000	0.000	0.000	1.465	1.000	0.000

Air Zero Calibration, performed Wed Dec 31 17:00:00 1969:

	Raw (v)	Calibrated (v)	Results

Raw (v)

Calibrated (v)

Results

Zero

Zero

Offset

3'	0.000	0.000	0.000
5'	0.000	0.000	0.000
SUM			
S1	0.000	0.000	0.000
S2	0.000	0.000	0.000
S3	0.000	0.000	0.000
S4	0.000	0.000	0.000
S5	0.000	0.000	0.000
S6	0.000	0.000	0.000
S7	0.000	0.000	0.000
S8	0.000	0.000	0.000

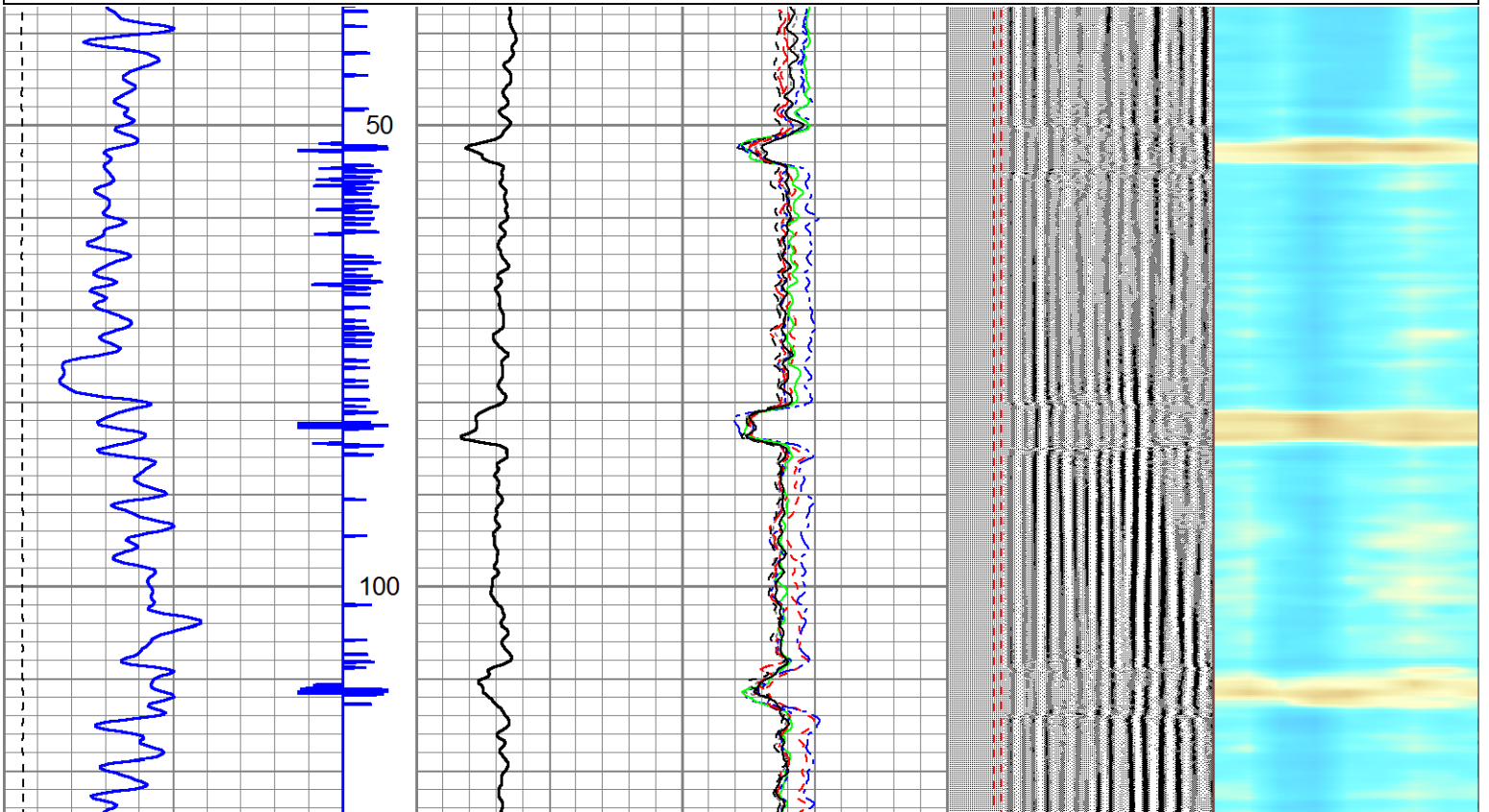


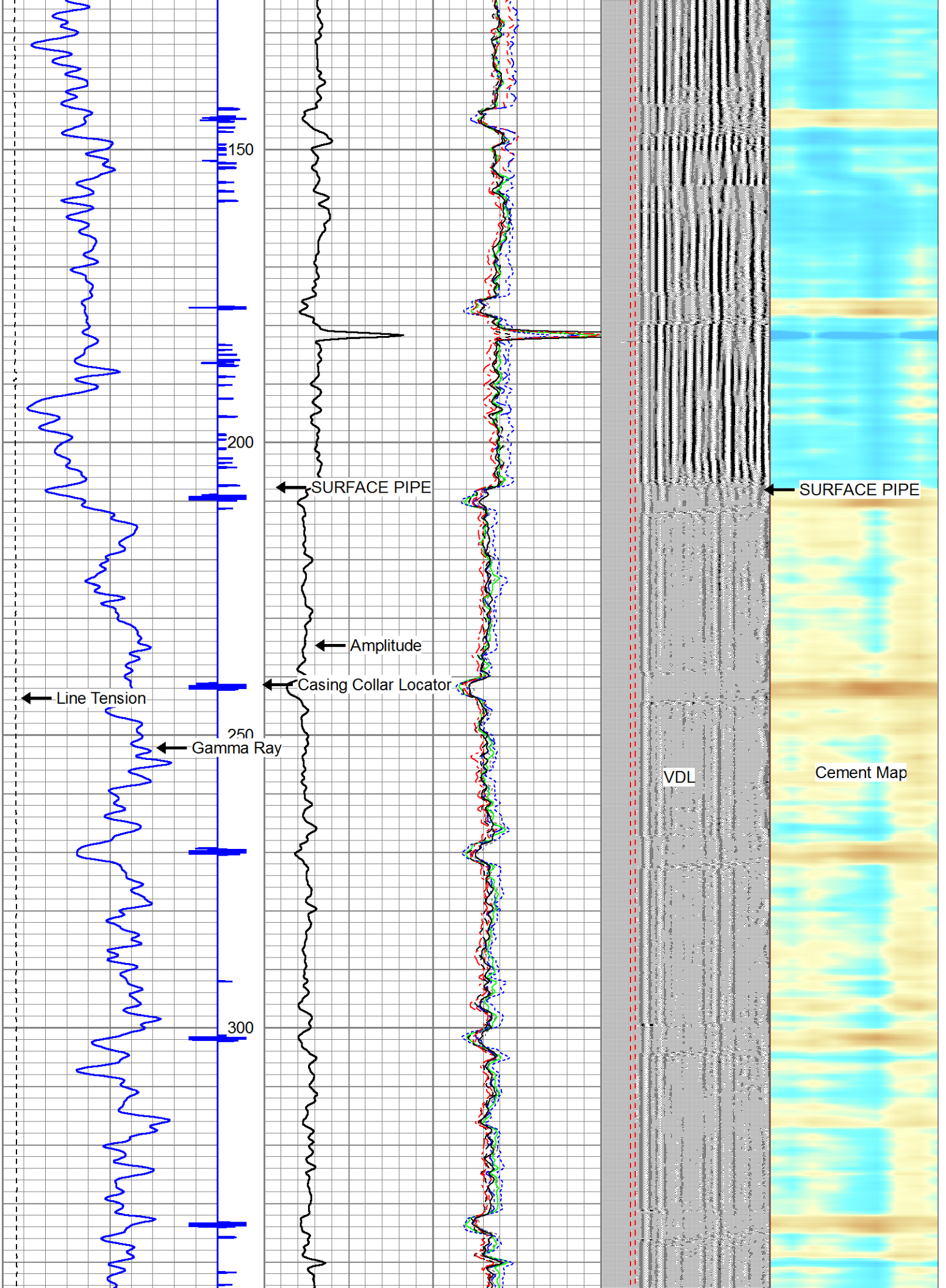
MAIN PASS 0 PSI

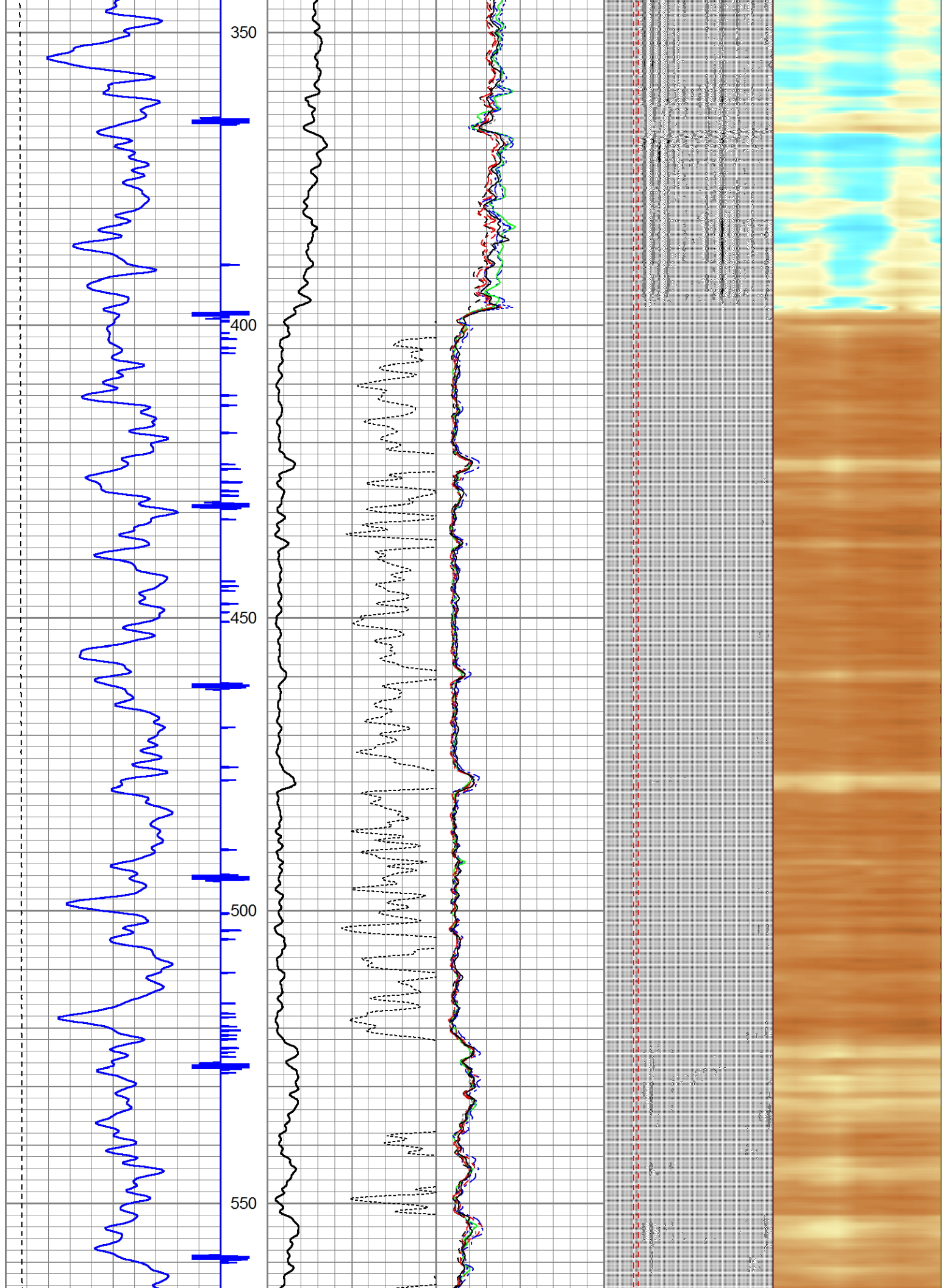
Database File: anadarko11916.db
 Dataset Pathname: pass10
 Presentation Format: rbl55
 Dataset Creation: Tue Jan 19 14:00:41 2016 by Log Std Casedhole 09061
 Charted by: Depth in Feet scaled 1:240

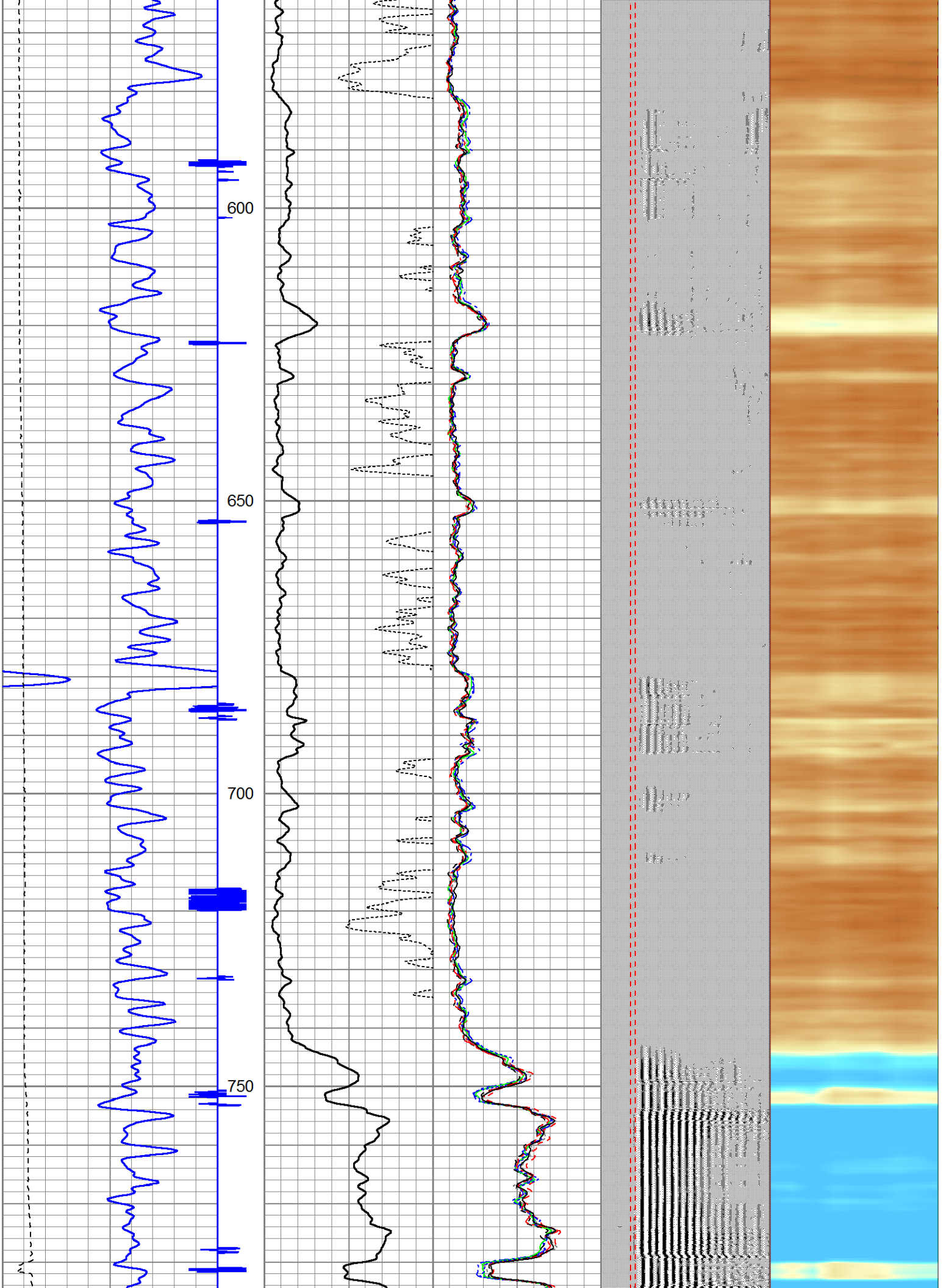
343	TT (usec)	243	0	Amplitude (mV)	100	-5	AMPS2	150	200	VDL	1200	Cement Map
0	GR (GAPI)	150	0	Amplified Amplitude		-5	AMPS3	150				
0	LTEN (lb)	4000	0	(mV)	10	-5	AMPS4	150	Free Pipe Gate			
						-5	AMPS5	150				
						-5	AMPS6	150				
						-5	AMPS7	150				
						-5	AMPS8	150				
						-5	AMPS1	150				

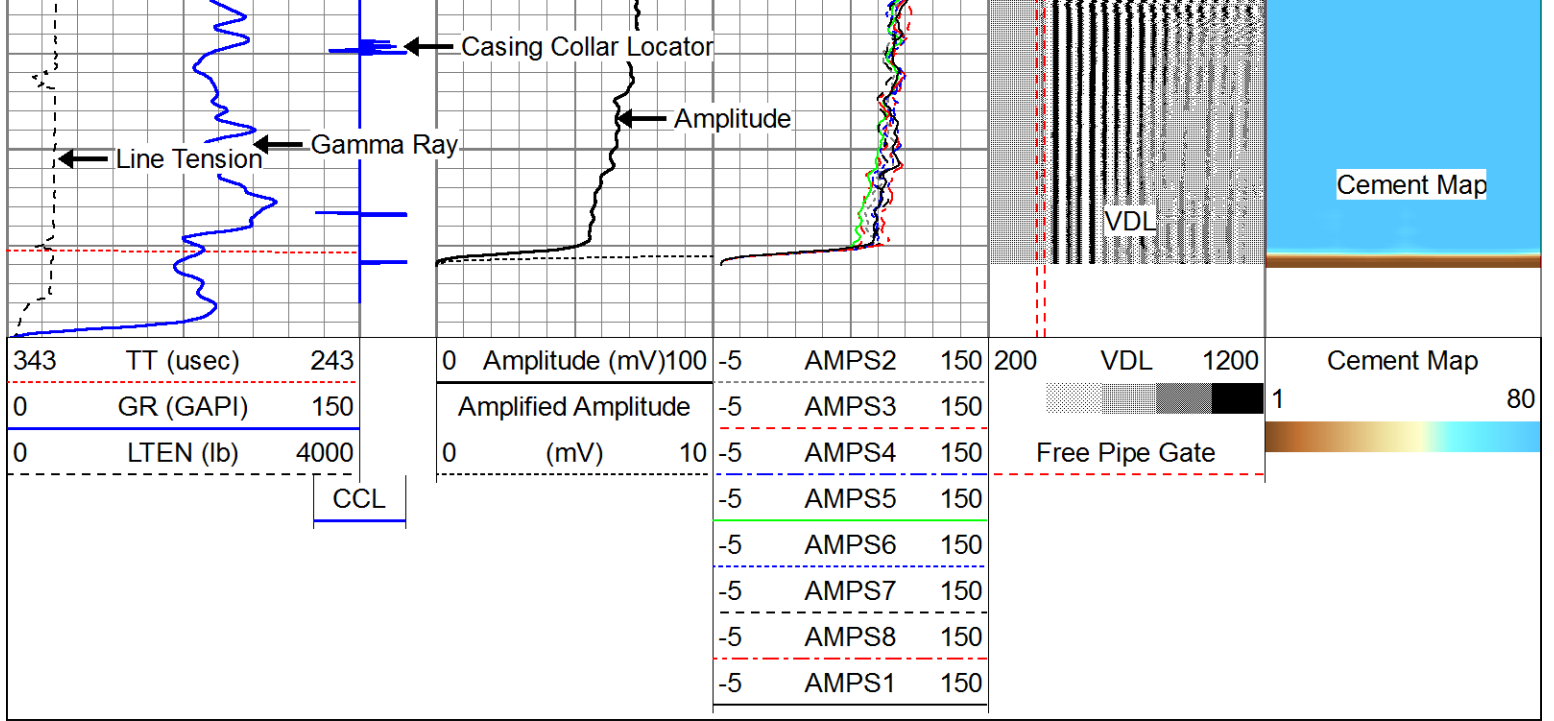
CCL











Sensor	Offset (ft)	Schematic	Description	Len (ft)	OD (in)	Wt (lb)
			Standard Standard Cable Head	1.00	1.69	1.00
WVF3FT	8.83		RBT-Probe (110217) Probe Radii Bond Tool with Digital Telemetry	8.92	2.75	90.00
WVFCAL	8.83					
WVFS1	8.83					
WVFS2	8.83					
WVFS3	8.83					
WVFS4	8.83					
WVFS5	8.83					
WVFS6	8.83					
WVFS7	8.83					
WVFS8	8.83					
WVF5FT	7.75					

CCL	3.50				
IntTemp	2.00		GR-275D_INC (275D_with_INC) 2-3/4" GR-CCL with Inclination	4.50	2.75
ACCX	1.83				
ACCY	1.83				
ACCZ	1.83				
GR	0.83				

Dataset: anadarko11916.db: field/well/run1/pass10
 Total Length: 14.42 ft
 Total Weight: 91.00 lb
 O.D.: 2.75 in



Company kKERR-MCGEE OIL AND GAS
 Well CHIKUMA HARRY S GU "B" #1
 Field DJ BASIN
 County WELD
 State COLORADO