

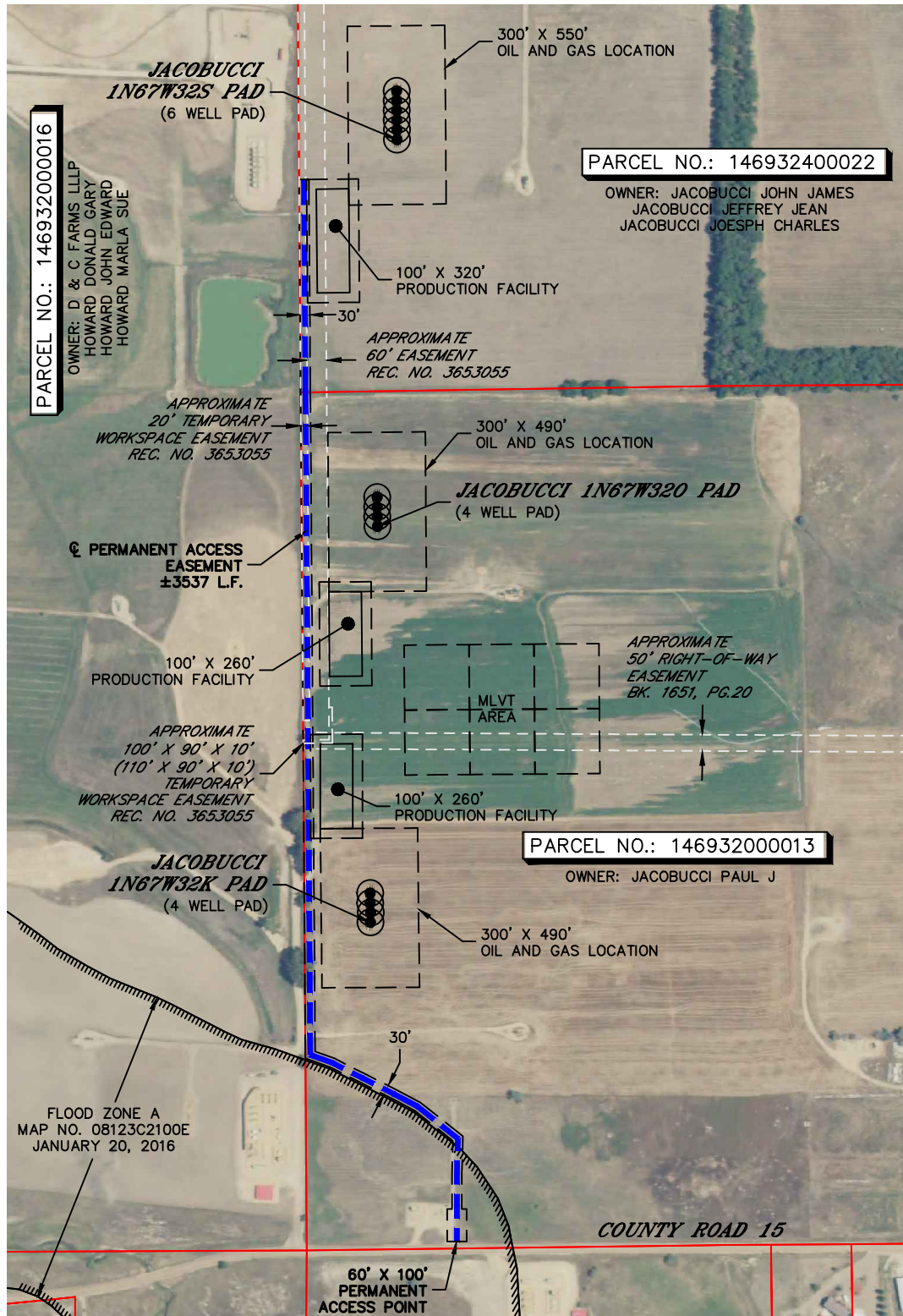


Lat40°, Inc. 6250 W. 10th Street, Unit 2, Greeley, CO 970-515-5294

ACCESS MAP

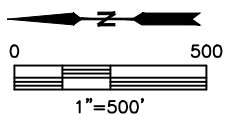
JACOBUCCI 1N67W32 PADS

SECTION: 32
TOWNSHIP: 1N
RANGE: 67W
6TH. P.M.
WELD COUNTY, CO



LEGEND

--- APPROXIMATE PERMANENT ACCESS EASEMENT



DATE: 3/29/2016
PROJECT#: 2016031