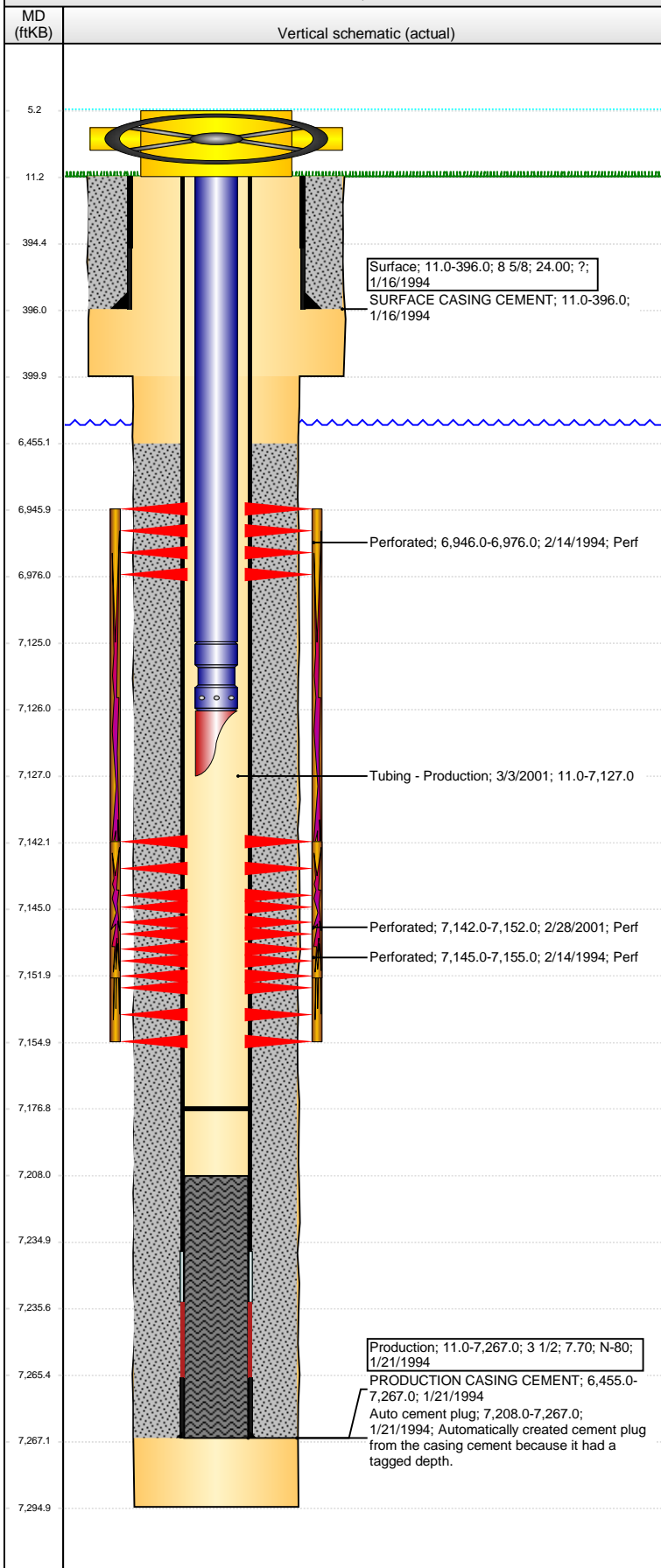


Well Name: BICKLING 03-41

VERTICAL - ORIGINAL HOLE, 3/24/2016 9:23:48 AM



Well Header

API	Business Unit	District	Well Config
05-123-17726	DJ BASIN	15	VERTICAL
Original KB Elevation (ft)	KB - GL / MSL (ftKB)	Spud Date	P & A Date
4,767	11.00	1/16/1994	

Comment

MINIMAL WELL DATA - NO DAILY RPTS AFTER 6/2001.

Directions To Well

Congressional Location

Quarter 1	Quarter 2	Quarter 3	Quarter 4	Section	Township	Twnshp N...	Range	Rng E/W Dir
	NE	NE	SE	3	6	N	65	W

Bottom Hole Location

North-South Distance (ft)	From N or S Line	East-West Distance (ft)	From E or W Line

Plug Back Total Depths

Date	Depth (ftKB)	Method	Com
1/21/1994	7,235.0	CASING TALLY	FLOAT COLLAR
2/1/1994	7,208.0	CASED HOLE LOG	DEPTH LOGGER ON CBL
3/3/2001	7,177.0	TBG TALLY	C/O DID NOT TAG

Wellbore Sections

Section Des	Size (in)	Act Top, MD (ftKB)	Act Btm, MD (ftKB)
SURFACE	12 1/4	11.0	400.0
PRODUCTION	7 7/8	400.0	7,295.0

Zone Statuses

Zone Name	Status Date	Status	Fluid Type	Job	Prod Method
NIOBRARA	2/25/1994	PR		DRILLING/CO...	
CODELL	2/25/1994	PR		DRILLING/CO...	
CODELL	3/6/2001	PR		RE-FRAC, 2/24...	

Casing Strings

Surface, 396.0ftKB

Casing Description	Run Date	OD (in)	Wt/Len (l...)	Grade	Top, MD (ft...)	MD (ftKB)
Surface	1/16/1994	8 5/8	24.00	?	11.0	396.0

Production, 7,267.0ftKB

Casing Description	Run Date	OD (in)	Wt/Len (l...)	Grade	Top, MD (ft...)	MD (ftKB)
Production	1/21/1994	3 1/2	7.70	N-80	11.0	7,267.0

Cement

Description	Top Depth (ftKB)	Bottom Depth (ftKB)
SURFACE CASING CEMENT	11.0	396.0
Description	Top Depth (ftKB)	Bottom Depth (ftKB)
PRODUCTION CASING CEMENT	6,455.0	7,267.0

Tubing Strings

Tubing Description	Run Date	String...	ID (in)	Wt (lb/ft)	Grade	Len (ft)	Set De...
Tubing - Production	3/3/2001	2 1/16		3.25	?	7,116.00	

Tubing Components

Item Des	OD (in)	Wt (lb/ft)	Grade	Jts	Len (ft)	Btm (ftKB)	Btm (TVD) (ftKB)
Tubing	2 1/16	3.25	?	220	7,114.00	7,125.0	
Seat Nipple	2 1/16				1.00	7,126.0	
Mule Shoe	2 1/16				1.00	7,127.0	

Perforation Data

Zone	Bnch/St g	Entered Shot Total	Top (ftKB)	Btm (ftKB)	Date
NIOBRARA, ORIGINAL HOLE	B	8	6,946.00	6,976.00	2/14/1994
CODELL, ORIGINAL HOLE		40	7,142.00	7,152.00	2/28/2001
CODELL, ORIGINAL HOLE		8	7,145.00	7,155.00	2/14/1994

Stimulations & Treatments

Date	Zone	Primary Job Type
2/15/1994	NIOBRARA-CODELL, ORIGINAL HOLE	DRILLING/COMPLETION - ORIGINAL
Technical Result	Tech Result Details	Tech Result Note

Comment

LIMITED ENTRY FRAC

Well Name: BICKLING 03-41

VERTICAL - ORIGINAL HOLE, 3/24/2016 9:23:51 AM

Stimulations & Treatments

Date 3/1/2001	Zone CODELL, ORIGINAL HOLE	Primary Job Type RE-FRAC
Technical Result	Tech Result Details	Tech Result Note
Comment		

Other In Hole

Run Date	Des	OD (in)	Top (ftKB)	Btm (ftKB)

Logs

Date	Type	Top, MD (ftKB)	Btm, MD (ftKB)
1/20/1994	COMPENSATED DENSITY	3,700.0	7,295.0
1/20/1994	INDUCTION	400.0	7,295.0
2/1/1994	SONIC CEMENT BOND	6,370.0	7,204.0

