

Click here to reset the form

FORM
21
Rev 9/14

State of Colorado
Oil and Gas Conservation Commission

1120 Lincoln Street, Suite 801, Denver, Colorado 80203 (303)-894-2100 Fax: (303)-894-2109



FOR OGCC USE ONLY

Document Number:

Date Received:

MECHANICAL INTEGRITY TEST

1. Duration of the pressure test must be a minimum of 15 minutes.
2. An original pressure chart must accompany this report if this test was not witnessed by a OGCC representative. Injection wells tests must be witnessed by an OGCC representative.
3. For production wells, test pressures must be a at minimum of 300 psig.
4. New injection wells must be tested to maximum requested injection pressure.
5. For injection wells, test pressures must be at least 300 psig or average injection pressure, whichever is greater.
6. A minimum 300 psi differential pressure must be maintained between the tubing and tubing/casing annulus pressure.
7. Do not use this form if submitting under provisions of Rule 326.a.(1) B. or C.
8. OGCC notification must be provided 10 days prior to the test via Form 42.
9. Packers or bridge plugs, etc., must be set within 100 feet of the perforated interval to be considered a valid test.

Complete the
Attachment Checklist

	Oper	OGCC
Pressure Chart		
Cement Bond Log		
Tracer Survey		
Temperature Survey		
Inspection Number		✓

OGCC Operator Number: 16700
Name of Operator: Chevron U.S.A. Inc
Address: 100 Chevron Road
City: Rangely State: CO Zip: 81648
API Number: 05-103-05712 OGCC Facility ID Number: 47443 / Rangely Field 72370
Well/Facility Name: AC MCLAUGHLIN Well/Facility Number: 5
Location QtrQtr: NESW Section: 23 Township: T2N Range: R103W Meridian: 6th

Contact Name and Telephone
Diane L Peterson

No: (970) 675-3842

Email: dlpe@chevron.com

☒ SHUT-IN PRODUCTION WELL

☐ INJECTION WELL

Last MIT Date:

Test Type:

☒ Test to Maintain SI/TA status

☐ Verification of Repairs

☐ 5-year UIC

☐ Annual UIC Test

☐ Reset Packer

Describe Repairs or Other Well Activities:

No previous MIT

Casing Test

Use when perforations or open hole is isolated by bridge plug or cement plug; use if cased-hole only with plug back total depth.

Bridge Plug or Cement Plug Depth

Wellbore Data at Time of Test

Injection/Producing Zone(s)

Perforated Interval:

Open Hole Interval:

Weber

6084-6466'

Tubing Casing/Annulus Test

Tubing Size:

2 7/8'

Tubing Depth:

5823.02

Top Packer Depth:

5785.9

Multiple Packers?

☐ Yes

☒ No

Test Data

Test Date

3/11/16

Well Status During Test

SHUT IN

Casing Pressure Before Test

Initial Tubing Pressure

Final Tubing Pressure

Casing Pressure Start Test

350

Casing Pressure - 5 Min.

350

Casing Pressure - 10 Min.

350

Casing Pressure Final Test

350

Pressure Loss or Gain During Test

0

Test Witnessed by State Representative?

☒ Yes

☐ No

OGCC Field Representative (Print Name):

Kyle Granahan

I hereby certify that the statements made in this form are, to the best of my knowledge, true, correct, and complete.

Print Name: Diane L Peterson

Form 42#

400995286

Field Inspection #

Signed:

Diane L Peterson

Title: Permitting Specialist

Date:

3/11/16

OGCC Approval:

Kyle Granahan

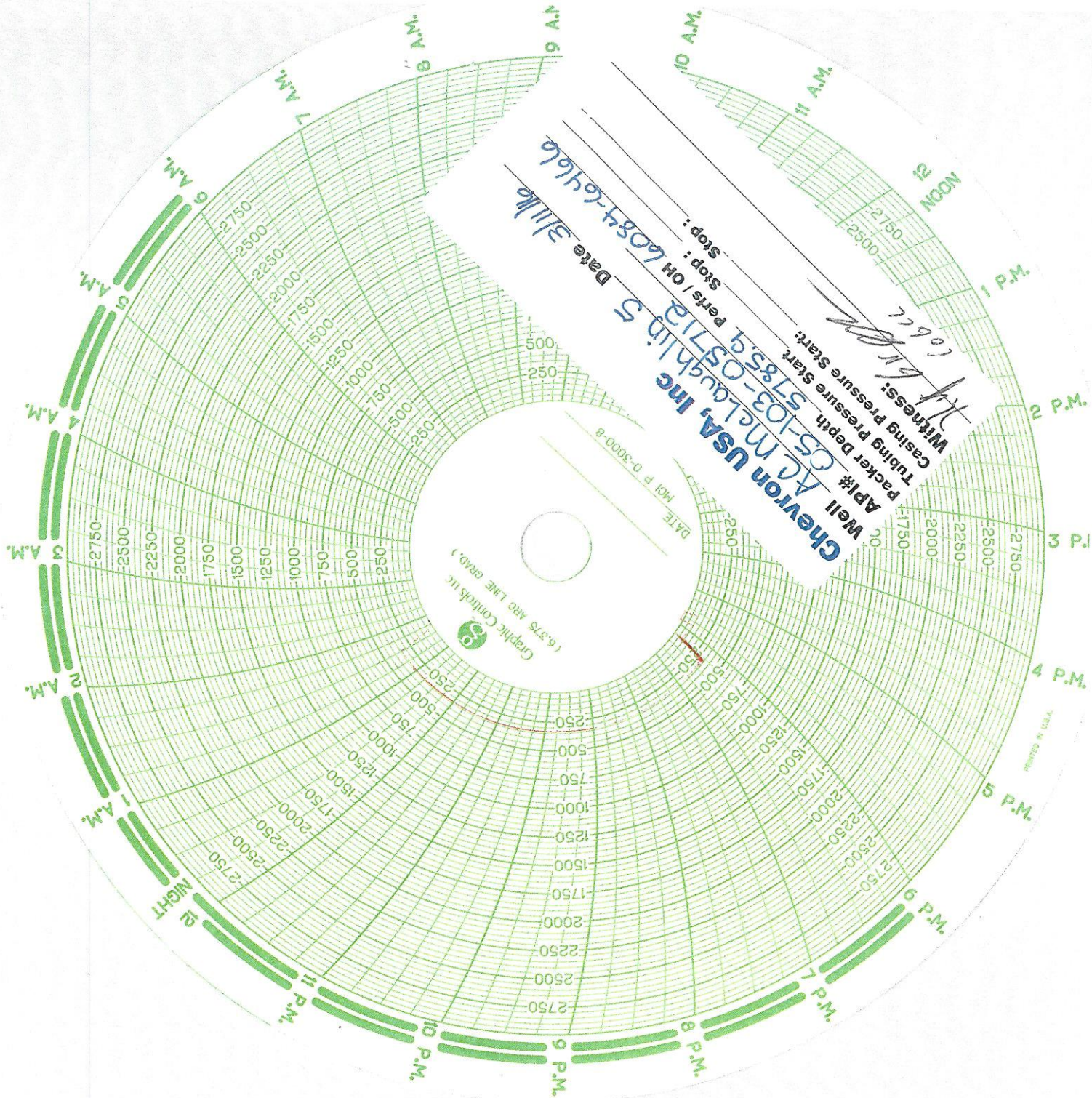
Title: NWFI

Date:

3-11-16

Conditions of Approval, if any:

Repair berm - rutty location



Graphic Controls Inc.
(6375 Ave. Line, Grand, N.J.)

Chevron USA, Inc.
Well # **42 Mcloughlin 5**
API# **05-103-05712**
Perfs / OH **6084-6466**
Tubing Pressure Start: **5785.9**
Casing Pressure Start: **5785.9**
Stop: **OH**
Stop: **OH**
Date **3/11/66**
Date **6084-6466**

Witness: *[Signature]*
7292