

Click here to reset the form

FORM  
21  
Rev 9/14

State of Colorado  
Oil and Gas Conservation Commission



1120 Lincoln Street, Suite 801, Denver, Colorado 80203 (303)-894-2100 Fax: (303)-894-2109

MECHANICAL INTEGRITY TEST

1. Duration of the pressure test must be a minimum of 15 minutes.
2. An original pressure chart must accompany this report if this test was not witnessed by a OGCC representative. Injection wells tests must be witnessed by an OGCC representative.
3. For production wells, test pressures must be at a minimum of 300 psig.
4. New injection wells must be tested to maximum requested injection pressure.
5. For injection wells, test pressures must be at least 300 psig or average injection pressure, whichever is greater.
6. A minimum 300 psi differential pressure must be maintained between the tubing and tubing/casing annulus pressure.
7. Do not use this form if submitting under provisions of Rule 326.a.(1) B. or C.
8. OGCC notification must be provided 10 days prior to the test via Form 42.
9. Packers or bridge plugs, etc., must be set within 100 feet of the perforated interval to be considered a valid test.

FOR OGCC USE ONLY

Document Number: \_\_\_\_\_

Date Received: \_\_\_\_\_

Complete the  
Attachment Checklist

Oper OGCC

Pressure Chart		
Cement Bond Log		
Tracer Survey		
Temperature Survey		
Inspection Number		✓

OGCC Operator Number: 16700  
Name of Operator: Chevron U.S.A. Inc  
Address: 100 Chevron Road  
City: Rangely State: CO Zip: 81648  
API Number: 05-103-11041 OGCC Facility ID Number: 47443 / Rangely Field 72370  
Well/Facility Name: A.C. McLAUGHLIN C Well/Facility Number: 2  
Location QtrQtr: NESE Section: 17 Township: T2N Range: R102W Meridian: 6th

Contact Name and Telephone

Diane L Peterson

No: (970) 675-3842

Email: dlpe@chevron.com

☒ SHUT-IN PRODUCTION WELL

☐ INJECTION WELL

Last MIT Date: \_\_\_\_\_

Test Type:

☒ Test to Maintain SI/TA status

☐ 5- year UIC

☐ Reset Packer

☐ Verification of Repairs

☐ Annual UIC Test

Describe Repairs or Other Well Activities: No previous MIT test

Casing Test

Use when perforations or open hole is isolated by bridge plug or cement plug; use if cased-hole only with plug back total depth.

Bridge Plug or Cement Plug Depth

Wellbore Data at Time of Test

Injection/Producing Zone(s)

Perforated Interval:

Open Hole Interval:

Weber

6440-6575'

Tubing Casing/Annulus Test

Tubing Size:

2 7/8'

Tubing Depth:

6404.02'

Top Packer Depth:

6367.7'

Multiple Packers?

☐ Yes

☒ No

Test Data

Test Date

3/11/16

Well Status During Test

SHUT IN

Casing Pressure Before Test

Initial Tubing Pressure

Final Tubing Pressure

Casing Pressure Start Test

350

Casing Pressure - 5 Min.

350

Casing Pressure - 10 Min.

350

Casing Pressure Final Test

350

Pressure Loss or Gain During Test

0

Test Witnessed by State Representative?

☒ Yes

☐ No

OGCC Field Representative (Print Name):

Kyle Granahan

I hereby certify that the statements made in this form are, to the best of my knowledge, true, correct, and complete.

Print Name: Diane L Peterson

Form 42# 400995285

Field Inspection #

Signed: Diane L Peterson Title: Permitting Specialist

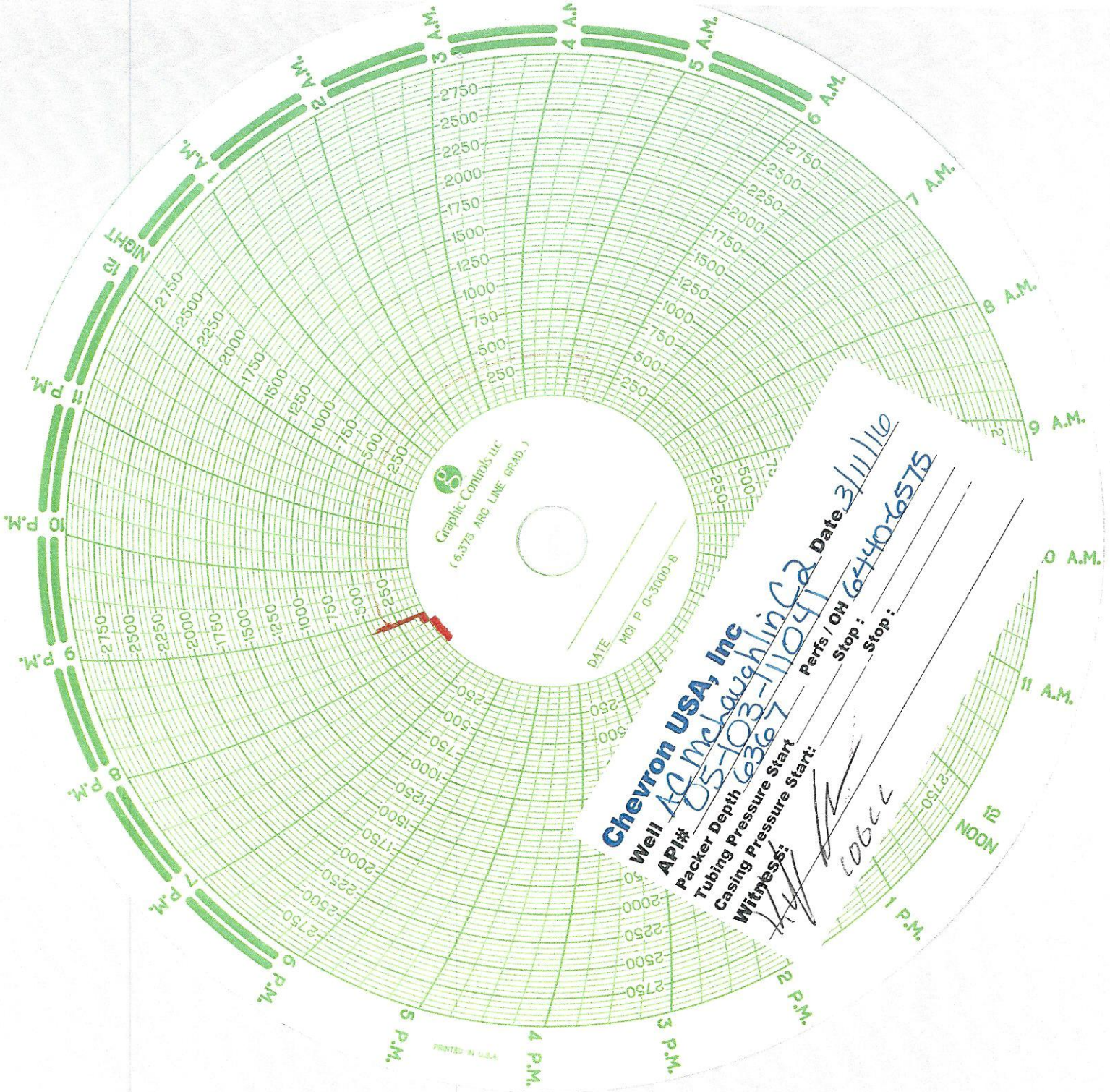
Date: 3/11/16

OGCC Approval: [Signature] Title: NVFI

Date: 3-11-16

Conditions of Approval, if any:





Graphic Controls Inc.  
(6.375 ARC LINE GRID.)

DATE MCI P 0-3000-B

**Chevron USA, Inc**  
Well **AG McLaughlin Ca**

API# **05-103-11041**  
Packer Depth **6367**

Tubing Pressure Start  
Casing Pressure Start

Witness: *[Signature]*

Perfs / OH **6440-6575**  
Date **3/11/16**

Stop: *[Signature]*

Stop: *[Signature]*

PRINTED IN U.S.A.