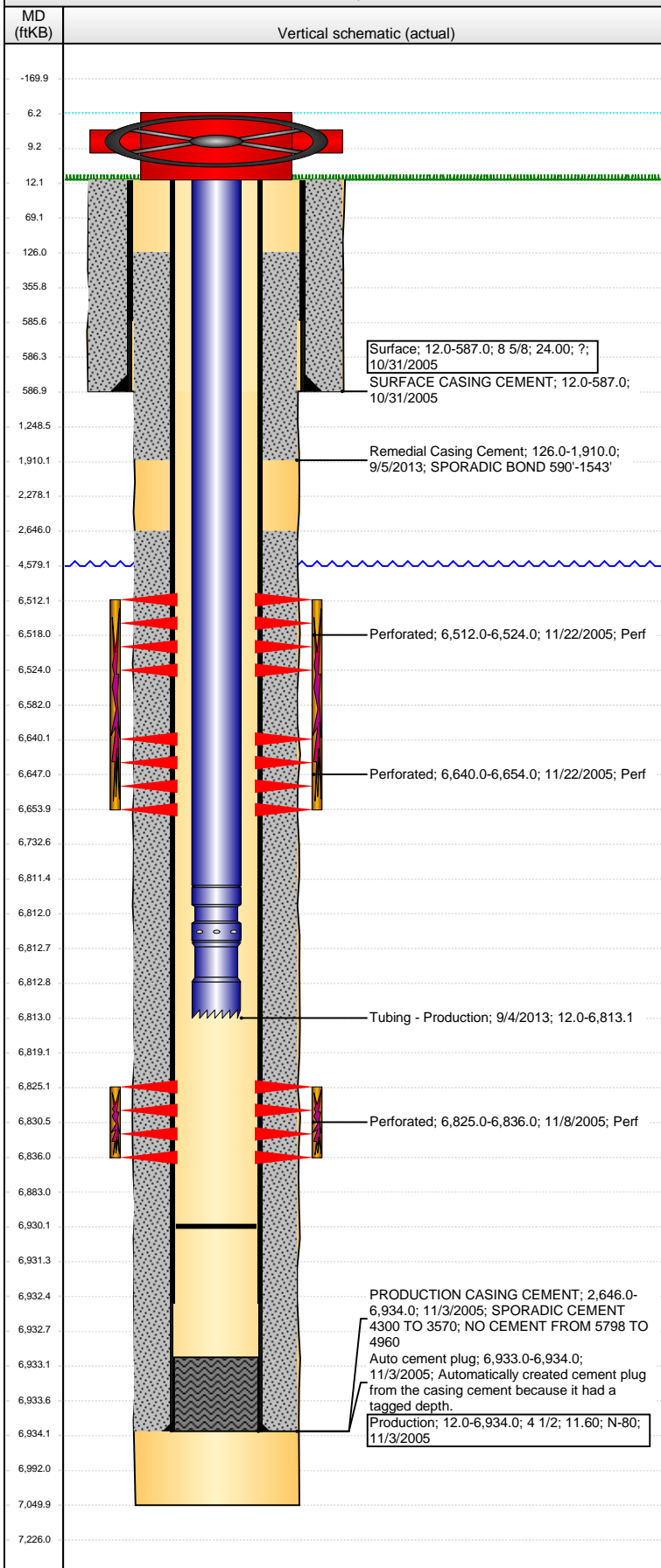


Wellbore Schematic Input Report

Well Name: BUCKMUR B02-14

VERTICAL - ORIGINAL HOLE, 3/29/2016 10:02:48 AM



Well Header									
API 05-123-23291		Business Unit DJ BASIN		District 15		Well Config VERTICAL			
Original KB Elevation (ft) 4,624		KB - GL / MSL (ftKB) 12.00		Spud Date 10/30/2005		P & A Date			
Comment									
Directions To Well RD 57 & 60 1/2 EAST 1/10 SOUTH 3/10 SE&E 1/10 NORTH INTO									
Congressional Location									
Quarter 1	Quarter 2	Quarter 3	Quarter 4	Section	Township	Twnshp N...	Range	Rng E/W Dir	
		SE	SW	2	5	N	64	W	
Bottom Hole Location									
North-South Distance (ft)		From N or S Line		East-West Distance (ft)			From E or W Line		
Plug Back Total Depths									
Date		Depth (ftKB)		Method		Com			
11/3/2005		6,933.0		CASING TALLY		FLOAT SHOE W/ BAFFLE			
11/8/2005		6,890.0		CASED HOLE LOG		DEPTH LOGGER ON CBL			
1/5/2006		6,930.0		TAG		CLEAN OUT TO LAND TUBING			
Wellbore Sections									
Section Des			Size (in)		Act Top, MD (ftKB)		Act Btm, MD (ftKB)		
SURFACE			12 1/4		12.0		587.0		
PRODUCTION			7 7/8		587.0		7,050.0		
Zone Statuses									
Zone Name		Status Date	Status	Fluid Type	Job		Prod Method		
NIOBRARA		11/23/2005	PR		DRILLING/CO...				
CODELL		11/23/2005	PR		DRILLING/CO...				
Casing Strings									
Surface, 587.0ftKB									
Casing Description		Run Date	OD (in)	Wt/Len (l...	Grade	Top, MD (ft...	MD (ftKB)		
Surface		10/31/2005	8 5/8	24.00	?	12.0	587.0		
Production, 6,934.0ftKB									
Casing Description		Run Date	OD (in)	Wt/Len (l...	Grade	Top, MD (ft...	MD (ftKB)		
Production		11/3/2005	4 1/2	11.60	N-80	12.0	6,934.0		
Cement									
Description					Top Depth (ftKB)		Bottom Depth (ftKB)		
SURFACE CASING CEMENT					12.0		587.0		
Description					Top Depth (ftKB)		Bottom Depth (ftKB)		
PRODUCTION CASING CEMENT					2,646.0		6,934.0		
Description					Top Depth (ftKB)		Bottom Depth (ftKB)		
Remedial Casing Cement					126.0		1,910.0		
Tubing Strings									
Tubing Description		Run Date	String...	ID (in)	Wt (lb/ft)	Grade	Len (ft)	Set De...	
Tubing		1/6/2006	2 3/8	1.995	4.70	J-55	6,796.00		
Tubing Description		Run Date	String...	ID (in)	Wt (lb/ft)	Grade	Len (ft)	Set De...	
Tubing - Production		9/4/2013	2 3/8	1.995	4.70	J-55	6,801.07		
Tubing Components									
Item Des		OD (in)	Wt (lb/ft)	Grade	Jts	Len (ft)	Btm (ftKB)	Btm (TVD) (ftKB)	
EUE 8rd Tubing		2 3/8	4.70	J-55	216	6,799.47	6,811.5		
Pump Seating Nipple		2 3/8	1.10		1	1.10	6,812.6		
Notched collar		2 3/8			1	0.50	6,813.1		
Perforation Data									
Zone		Bnch/St g	Entered Shot Total	Top (ftKB)		Btm (ftKB)		Date	
NIOBRARA, ORIGINAL HOLE			72	6,512.00		6,524.00		11/22/2005	
NIOBRARA, ORIGINAL HOLE			84	6,640.00		6,654.00		11/22/2005	
CODELL, ORIGINAL HOLE			44	6,825.00		6,836.00		11/8/2005	
Stimulations & Treatments									
Date		Zone			Primary Job Type				
11/22/2005		NIOBRARA, ORIGINAL HOLE			DRILLING/COMPLETION - ORIGINAL				
Technical Result			Tech Result Details			Tech Result Note			
Comment									

Well Name: BUCKMUR B02-14

VERTICAL - ORIGINAL HOLE, 3/29/2016 10:02:51 AM

Stimulations & Treatments

Date 11/22/2005	Zone CODELL, ORIGINAL HOLE	Primary Job Type DRILLING/COMPLETION - ORIGINAL
Technical Result	Tech Result Details	Tech Result Note

Comment

Other In Hole

Run Date	Des	OD (in)	Top (ftKB)	Btm (ftKB)

Logs

Date	Type	Top, MD (ftKB)	Btm, MD (ftKB)
11/3/2005	COMPENSATED DENSITY	3,400.0	7,030.0
11/3/2005	INDUCTION	587.0	7,050.0
11/8/2005	CBL/CCL/GR	6,100.0	6,887.0
9/6/2013	CBL/CCL/GR	12.0	2,000.0

