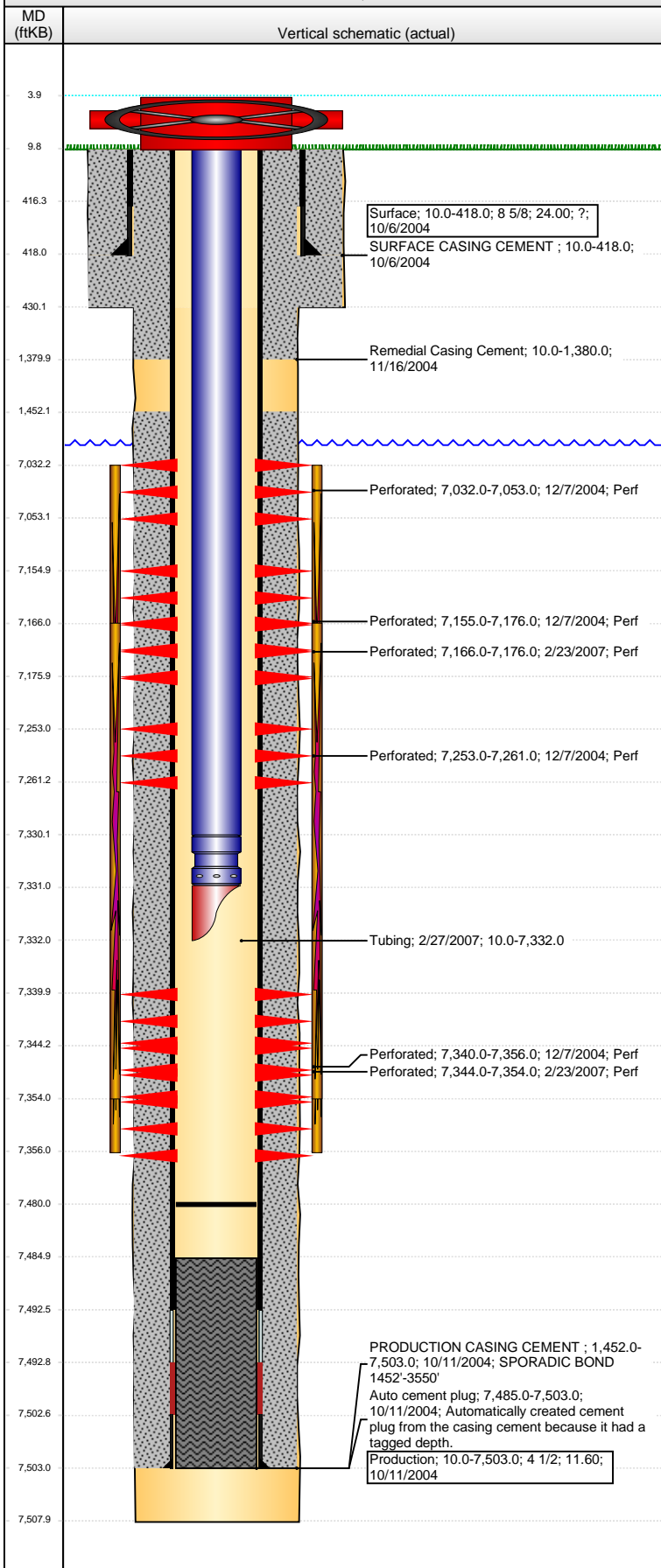


Wellbore Schematic Input Report

Well Name: CECIL FARMS 06-14

VERTICAL - ORIGINAL HOLE, 3/22/2016 4:09:14 PM



Well Header									
API 05-123-22328		Business Unit DJ BASIN		District 15		Well Config VERTICAL			
Original KB Elevation (ft) 4,888		KB - GL / MSL (ftKB) 10.00		Spud Date 10/5/2004		P & A Date			
Comment									
Directions To Well									
Congressional Location									
Quarter 1	Quarter 2	Quarter 3 SE	Quarter 4 NE	Section 6	Township 6 N	Twtnshp N...	Range 66	Rng E/W Dir W	
Bottom Hole Location									
North-South Distance (ft)		From N or S Line		East-West Distance (ft)			From E or W Line		
Plug Back Total Depths									
Date	Depth (ftKB)	Method			Com				
10/11/2004	7,492.4	CASING TALLY			SHOE W/ BAFFLE				
10/19/2004	7,485.0	CASED HOLE LOG			DEPTH LOGGER FROM CBL				
2/27/2007	7,480.0	TAG			CLEAN OUT & LAND TBG				
Wellbore Sections									
Section Des			Size (in)		Act Top, MD (ftKB)		Act Btm, MD (ftKB)		
SURFACE			12 1/4		10.0		430.0		
PRODUCTION			7 7/8		430.0		7,508.0		
Zone Statuses									
Zone Name	Status Date	Status	Fluid Type	Job	Prod Method				
CODELL	12/30/2004	PR		DRILLING/CO...					
CODELL	3/6/2007	PR		RE-FRAC, 2/8/...					
NIOBRARA	12/30/2004	PR	DRILLING/CO...						
NIOBRARA	3/6/2007	PR	RE-FRAC, 2/8/...						
Casing Strings									
Surface, 418.0ftKB									
Casing Description Surface		Run Date 10/6/2004	OD (in) 8 5/8	Wt/Len (l... 24.00	Grade ?	Top, MD (ft... 10.0	MD (ftKB) 418.0		
Production, 7,503.0ftKB									
Casing Description Production		Run Date 10/11/2004	OD (in) 4 1/2	Wt/Len (l... 11.60	Grade	Top, MD (ft... 10.0	MD (ftKB) 7,503.0		
Cement									
Description SURFACE CASING CEMENT				Top Depth (ftKB) 10.0		Bottom Depth (ftKB) 418.0			
Description PRODUCTION CASING CEMENT				Top Depth (ftKB) 1,452.0		Bottom Depth (ftKB) 7,503.0			
Description Remedial Casing Cement				Top Depth (ftKB) 10.0		Bottom Depth (ftKB) 1,380.0			
Tubing Strings									
Tubing Description Tubing		Run Date 2/27/2007	String... 2 3/8	ID (in) 1.710	Wt (lb/ft)	Grade ?	Len (ft) 7,322.00	Set De... 	
Tubing Components									
Item Des		OD (in)	Wt (lb/ft)	Grade	Jts	Len (ft)	Btm (ftKB)	Btm (TVD) (ftKB)	
Tubing		2 3/8	0.00	?	239	7,320.00	7,330.0		
Seal Nipple		2 3/8				1.00	7,331.0		
Mule Shoe		2 3/8				1.00	7,332.0		
Perforation Data									
Zone		Bnch/St g	Entered Shot Total	Top (ftKB)		Btm (ftKB)		Date	
NIOBRARA, ORIGINAL HOLE		A		7,032.00		7,053.00		12/7/2004	
NIOBRARA, ORIGINAL HOLE		B		7,155.00		7,176.00		12/7/2004	
NIOBRARA, ORIGINAL HOLE		B		7,166.00		7,176.00		2/23/2007	
NIOBRARA, ORIGINAL HOLE		C		7,253.00		7,261.00		12/7/2004	
CODELL, ORIGINAL HOLE				7,340.00		7,356.00		12/7/2004	
CODELL, ORIGINAL HOLE				7,344.00		7,354.00		2/23/2007	

Well Name: CECIL FARMS 06-14

VERTICAL - ORIGINAL HOLE, 3/22/2016 4:09:17 PM

Stimulations & Treatments

Date 12/10/2004	Zone NIOBRARA-CODELL, ORIGINAL HOLE	Primary Job Type DRILLING/COMPLETION - ORIGINAL
Technical Result	Tech Result Details	Tech Result Note

Comment
LIMITED ENTRY

Date 2/27/2007	Zone CODELL, ORIGINAL HOLE	Primary Job Type RE-FRAC
Technical Result	Tech Result Details	Tech Result Note

Comment

Other In Hole

Run Date	Des	OD (in)	Top (ftKB)	Btm (ftKB)

Logs

Date	Type	Top, MD (ftKB)	Btm, MD (ftKB)
10/10/2004	COMPENSATED DENSITY	3,700.0	7,491.0
10/10/2004	INDUCTION	418.0	7,511.0
10/19/2004	CBL/CCL/GR	1,200.0	7,482.0
12/3/2004	CBL/CCL/GR	100.0	2,000.0

