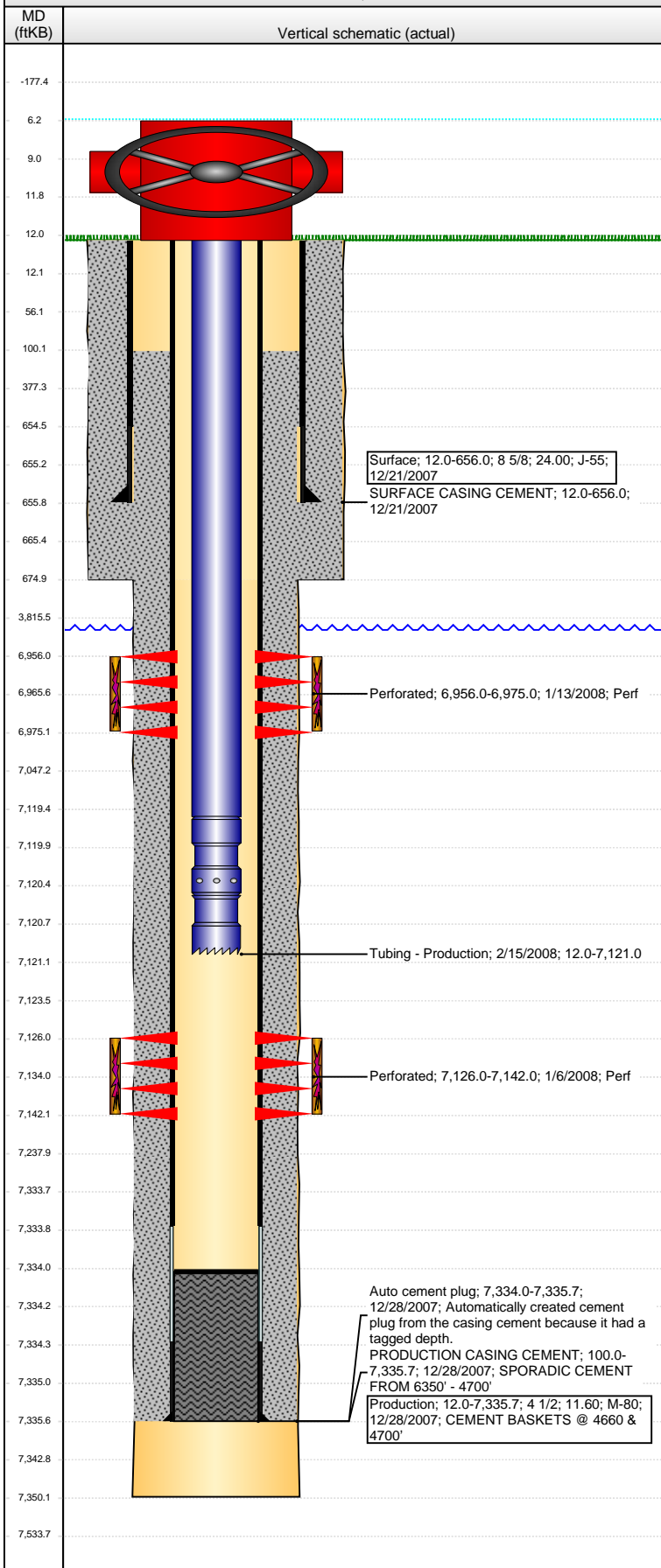


**Well Name: BICKLING FARMS 03-45**

VERTICAL - ORIGINAL HOLE, 3/22/2016 2:32:06 PM



## Well Header

API 05-123-26361	Business Unit DJ BASIN	District 15	Well Config VERTICAL
Original KB Elevation (ft) 4,828	KB - GL / MSL (ftKB) 12.00	Spud Date 12/20/2007	P & A Date
Comment			
Directions To Well			

## Congressional Location

Quarter 1	Quarter 2	Quarter 3 SE	Quarter 4 SE	Section 3	Township 6 N	Twnshp N...	Range 65	Rng E/W Dir W
-----------	-----------	-----------------	-----------------	--------------	-----------------	-------------	-------------	------------------

## Bottom Hole Location

North-South Distance (ft)	From N or S Line	East-West Distance (ft)	From E or W Line
---------------------------	------------------	-------------------------	------------------

## Plug Back Total Depths

Date	Depth (ftKB)	Method	Com
12/28/2007	7,334.0	CASING TALLY	FLOAT COLLAR
1/7/2008	7,312.0	CASED HOLE LOG	DEPTH LOGGER ON CBL
2/15/2008	7,334.0	TAG	C/O LND TBG

## Wellbore Sections

Section Des	Size (in)	Act Top, MD (ftKB)	Act Btm, MD (ftKB)
SURFACE	12 1/4	12.0	675.0
PRODUCTION	7 7/8	675.0	7,350.0

## Zone Statuses

Zone Name	Status Date	Status	Fluid Type	Job	Prod Method
CODELL	1/15/2008	PR		DRILLING/CO...	
NIOBRARA	1/15/2008	PR		DRILLING/CO...	

## Casing Strings

### Surface, 656.0ftKB

Casing Description	Run Date	OD (in)	Wt/Len (l...)	Grade	Top, MD (ft...)	MD (ftKB)
Surface	12/21/2007	8 5/8	24.00	J-55	12.0	656.0

### Production, 7,335.7ftKB

Casing Description	Run Date	OD (in)	Wt/Len (l...)	Grade	Top, MD (ft...)	MD (ftKB)
Production	12/28/2007	4 1/2	11.60	M-80	12.0	7,335.7

## Cement

Description	Top Depth (ftKB)	Bottom Depth (ftKB)
SURFACE CASING CEMENT	12.0	656.0
Description	Top Depth (ftKB)	Bottom Depth (ftKB)
PRODUCTION CASING CEMENT	100.0	7,335.7

## Tubing Strings

Tubing Description	Run Date	String...	ID (in)	Wt (lb/ft)	Grade	Len (ft)	Set De...
Tubing - Production	2/15/2008	2 3/8	1.995	4.70	J-55	7,109.00	

## Tubing Components

Item Des	OD (in)	Wt (lb/ft)	Grade	Jts	Len (ft)	Btm (ftKB)	Btm (TVD) (ftKB)
Tubing	2 3/8	4.70	J-55	229	7,107.50	7,119.5	
Seal Nipple	2 3/8				1.00	7,120.5	
Notched collar	2 3/8				0.50	7,121.0	

## Perforation Data

Zone	Bnch/St g	Entered Shot Total	Top (ftKB)	Btm (ftKB)	Date
NIOBRARA, ORIGINAL HOLE	B	76	6,956.00	6,975.00	1/13/2008
CODELL, ORIGINAL HOLE		64	7,126.00	7,142.00	1/6/2008

## Stimulations & Treatments

Date	Zone	Primary Job Type
1/13/2008	CODELL, ORIGINAL HOLE	DRILLING/COMPLETION - ORIGINAL
Technical Result		
Tech Result Details		
Tech Result Note		
Comment		
Date	Zone	Primary Job Type
1/13/2008	NIOBRARA, ORIGINAL HOLE	DRILLING/COMPLETION - ORIGINAL
Technical Result		
Tech Result Details		
Tech Result Note		
Comment		

**Well Name: BICKLING FARMS 03-45**

VERTICAL - ORIGINAL HOLE, 3/22/2016 2:32:09 PM

## Other In Hole

Run Date	Des	OD (in)	Top (ftKB)	Btm (ftKB)

## Logs

Date	Type	Top, MD (ftKB)	Btm, MD (ftKB)
12/27/2007	COMPENSATED DENSITY	3,700.0	7,327.0
12/27/2007	INDUCTION	650.0	7,347.0
1/7/2008	CEMENT BOND	650.0	7,310.0

