



Radial Cement Bond Log
Gamma-Ray
CCL

Company		KERR-McGEE OIL & GAS ONSHORE LP	
Well		WADDLE 24-10J7	
Field		WATTENBERG	
County		WELD	
State		COLORADO	
Location:		API # : 05-123-17901	
Well		WADDLE 24-10J7	
Field		WATTENBERG	
County		WELD	
State		COLORADO	
Permanent Datum		GL	
Log Measured From		KB 11'	
Drilling Measured From		KB	
LAT: 40.20600 & LONG: -104.83710		SW / SE	
SEC 24 TWP 3N RGE 67W		Elevation 4792'	
Other Services		K.B. 4803' D.F. 4802' G.L. 4792'	
Date	10-17-2014	10-20-2014	
Run Number	ONE	TWO	
Depth Driller	7677'	7677'	
Depth Logger	4790'	1320'	
Bottom Logged Interval	4790'	1320'	
Top Log Interval	3690'	SURFACE	
Open Hole Size	7 7/8"	7 7/8"	
Type Fluid	WATER	WATER	
Density / Viscosity	1.0	1.0	
Max. Recorded Temp.	163 DEG	79 DEG	
Estimated Cement Top	3994'	484'	
Time Well Ready	N/A	N/A	
Time Logger on Bottom	N/A	N/A	
Equipment Number	4495	4495	
Location	GREELEY	GREELEY	
Recorded By	M. JANDREAU	M. JANDREAU	
Witnessed By	RYAN THOMPSON	RYAN THOMPSON	
Borehole Record			
Run Number	Bit	From	To
ONE			
TWO			
Casing Record	Size	Wgt/Ft	Top
Surface String	8 5/8"	24#	0
Prot. String			
Production String	3.5	7.7#	0
Liner			

<<< Fold Here >>>



All interpretations are opinions based on inferences from electrical or other measurements and we cannot and do not guarantee the accuracy or correctness of any interpretation, and we shall not, except in the case of gross or willful negligence on our part, be liable or responsible for any loss, costs, damages, or expenses incurred or sustained by anyone resulting from any interpretation made by any of our officers, agents or employees. These interpretations are also subject to our general terms and conditions set out in our current Price Schedule.

Comments

NOT CORRELATED
LOGGED TO VERIFY CEMENT COVERAGE
THANK YOU FOR USING WARRIOR ENERGY SERVICES.

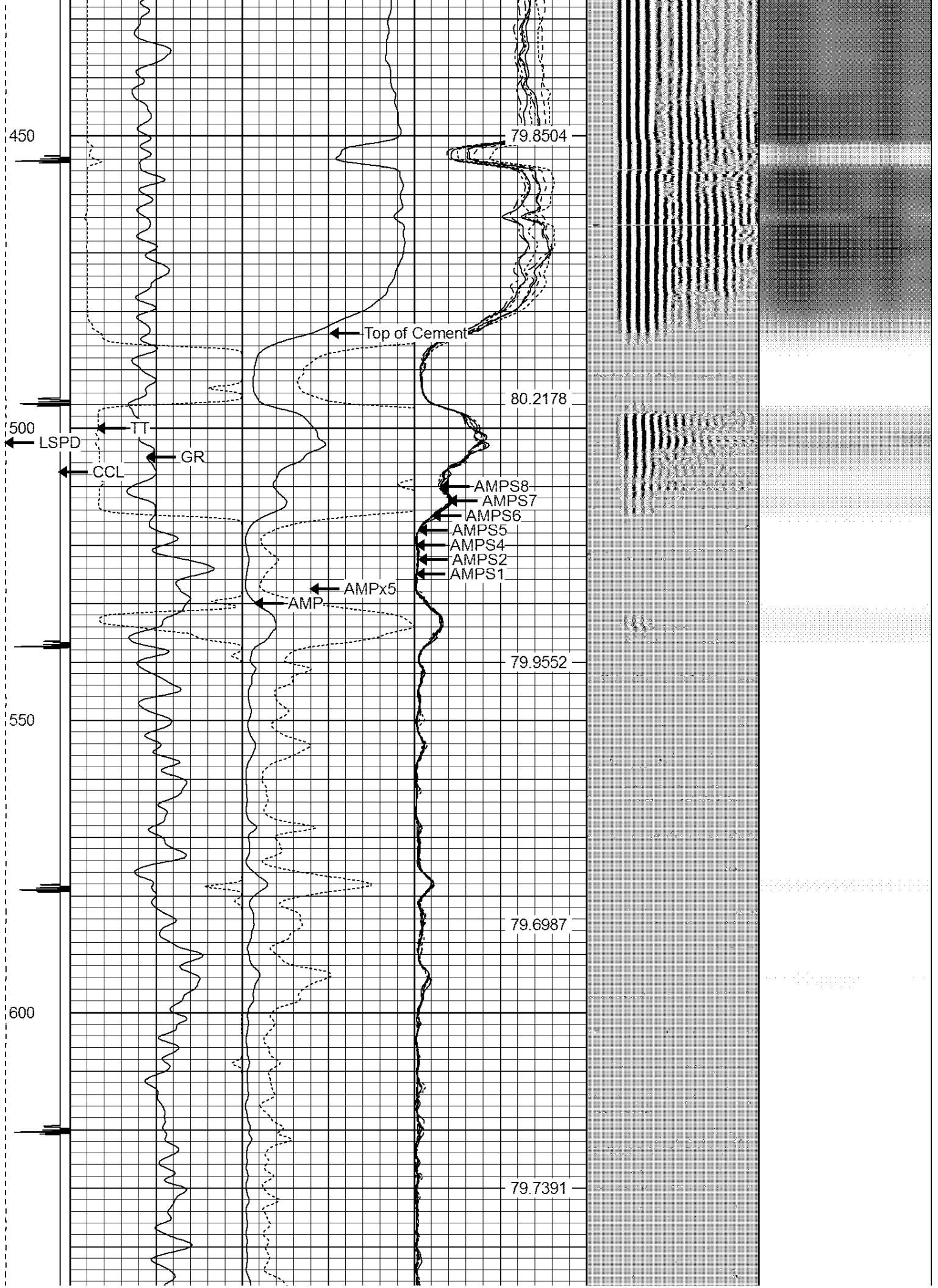
Sensor	Offset (ft)	Schematic	Description	Len (ft)	OD (in)	Wt (lb)
CENT	19.08					

			PTS275	2.83	2.75	
HEADVOLT	16.25					
RBT	16.25					
IntTemp	14.83					
WVF3FT	11.58		RBT-Probe (Base)	8.92	2.75	90.00
WVFCAL	11.58		Probe Radii Bond Tool with Digital Telemetry			
WVFS1	11.58					
WVFS2	11.58					
WVFS3	11.58					
WVFS4	11.58					
WVFS5	11.58					
WVFS6	11.58					
WVFS7	11.58					
WVFS8	11.58					
WVF5FT	10.58					
CNLSC	6.00		CNT-Probe_B (275)	3.00	2.75	40.00
CNSSC	5.17		6 bow centralizer			
GR	4.33					
CCL	3.64					
			GR-Probe (275)	4.33	2.75	30.00
			Probe 2.75"			
GR	0.90					
Dataset: waddle 24-10j7.db: field/well/run1/pass3 Total Length: 19.08 ft Total Weight: 160.00 lb O.D. 2.75 in						

-9	CCL	1	200	TT (usec)	800	0	AMP (mV)	100	0	AMPS1	100	200	VDL	1200	1	Cement Map	8		
LSPD (ft/min)			0	GR (cps)	200	0	AMPx5 (mV)	20	0	AMPS2	100							1	100
			200	GR (cps)	400				0	AMPS4	100								
0	250								0	AMPS5	100								
									0	AMPS6	100								
									0	AMPS7	100								
									0	AMPS8	100								
											IntTemp (degF)								







650

700

750

800

850

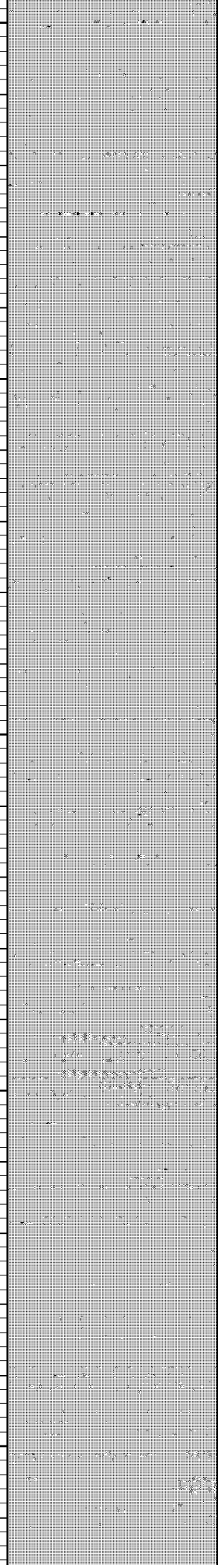
79.7311

79.7663

79.724

79.5273

79.3735



900

950

1000

1050

78.9485

78.5761

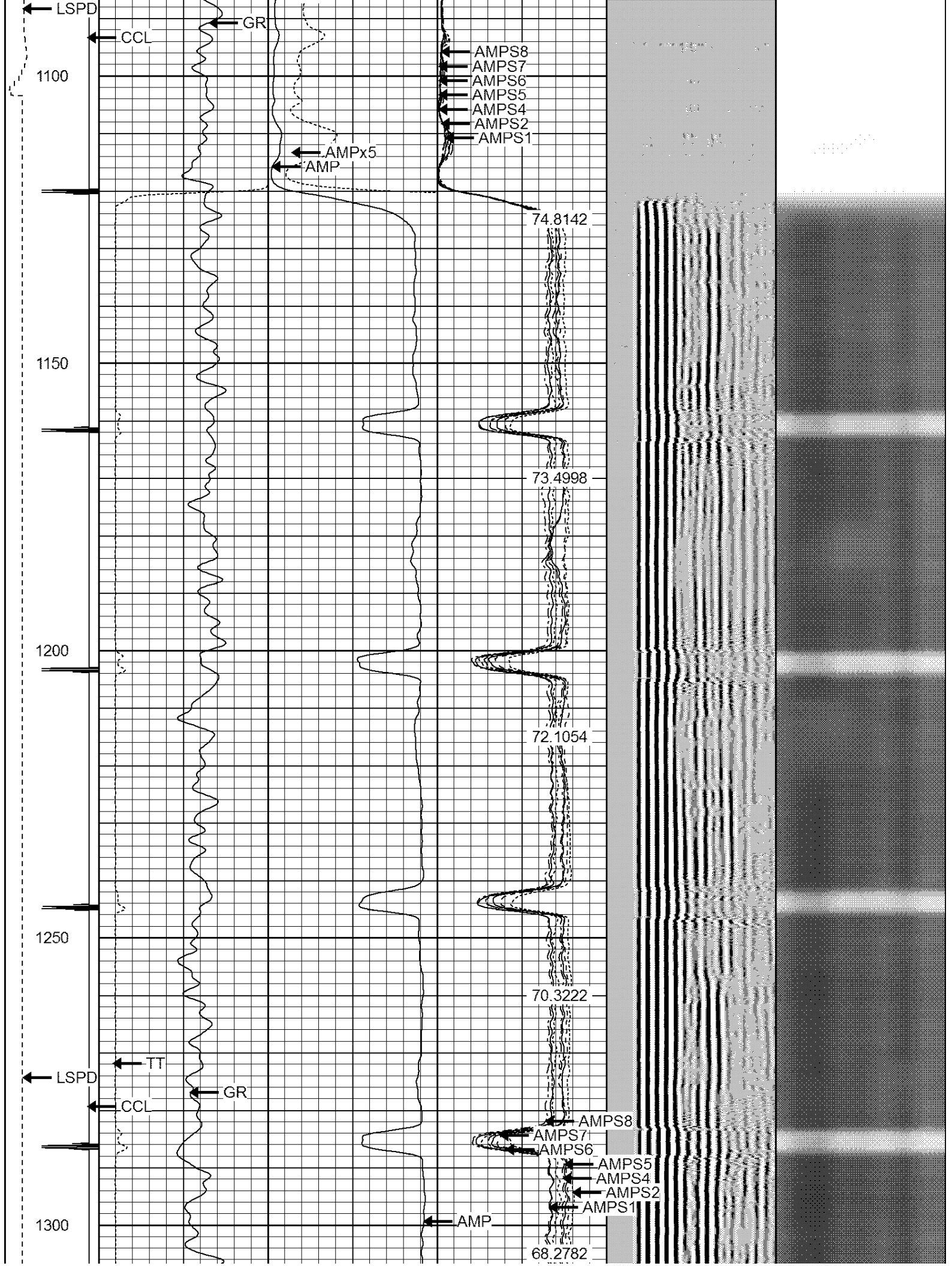
78.0667

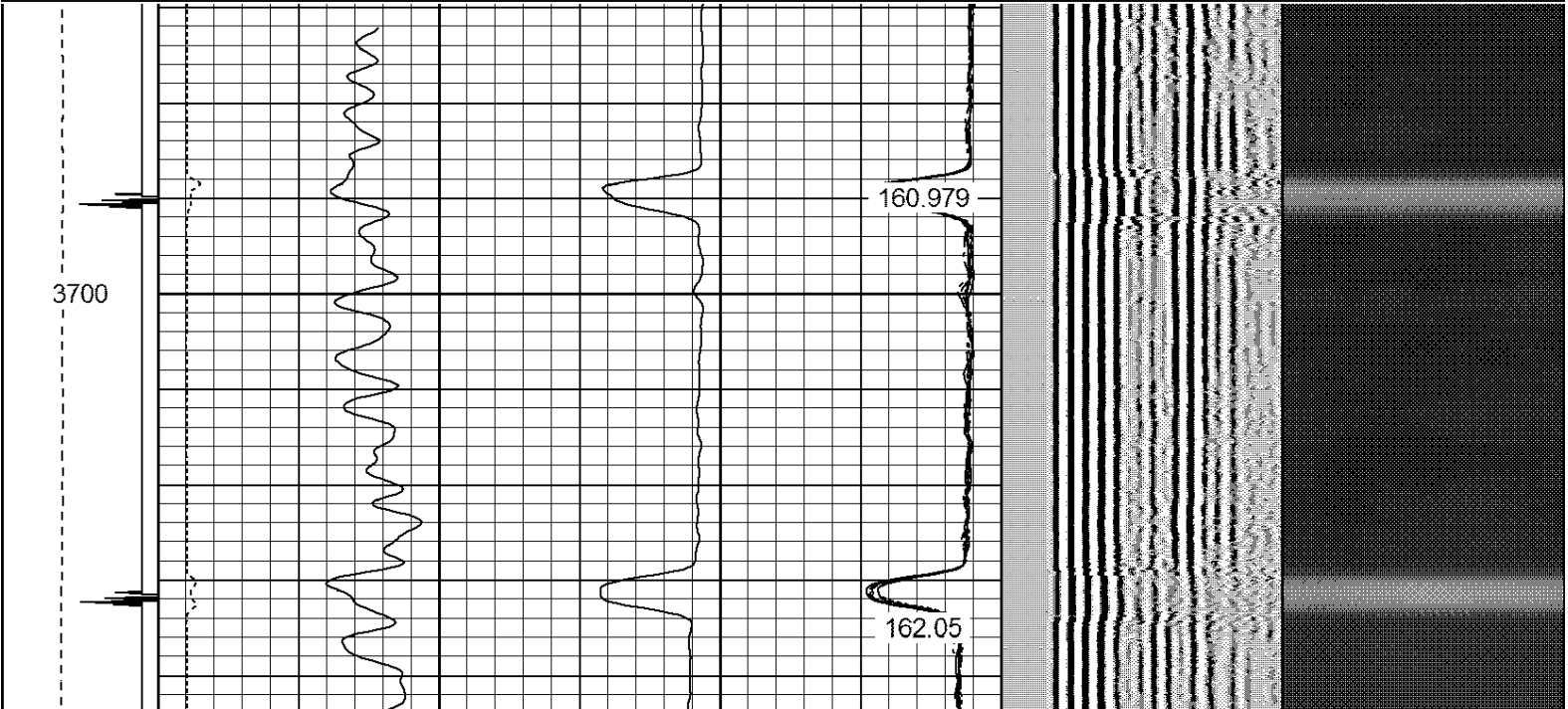
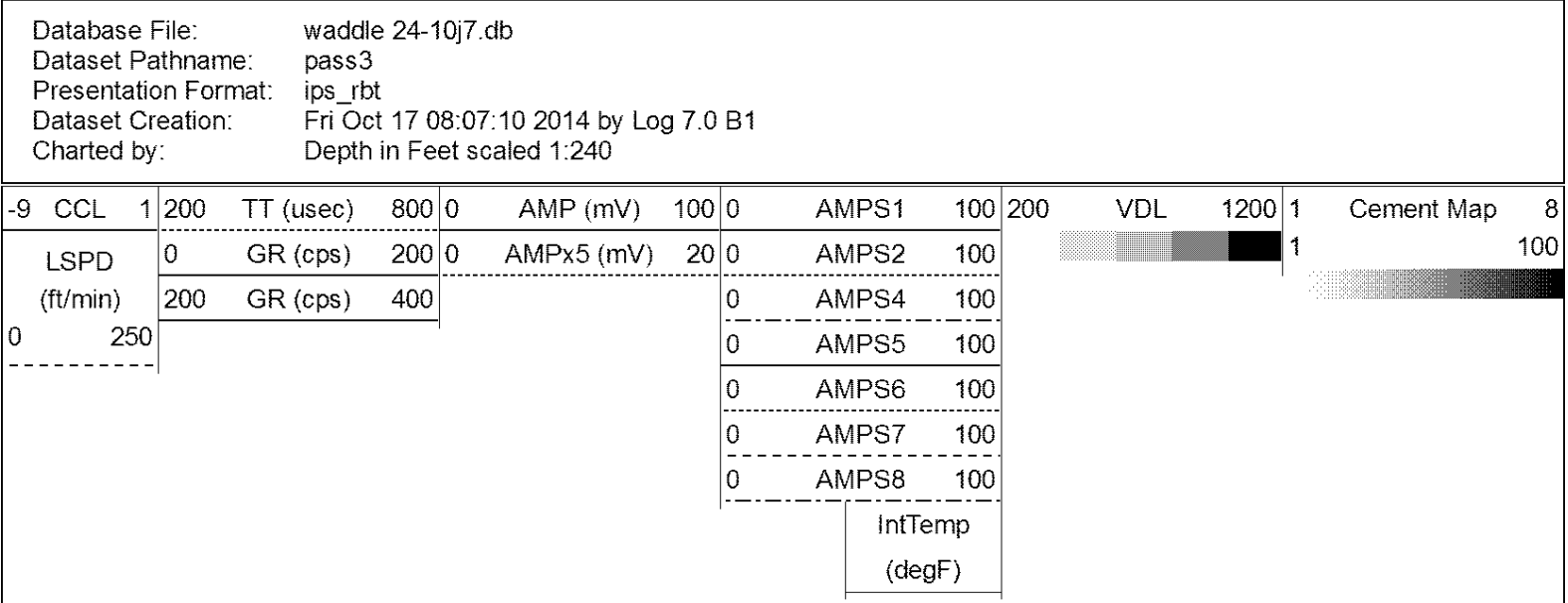
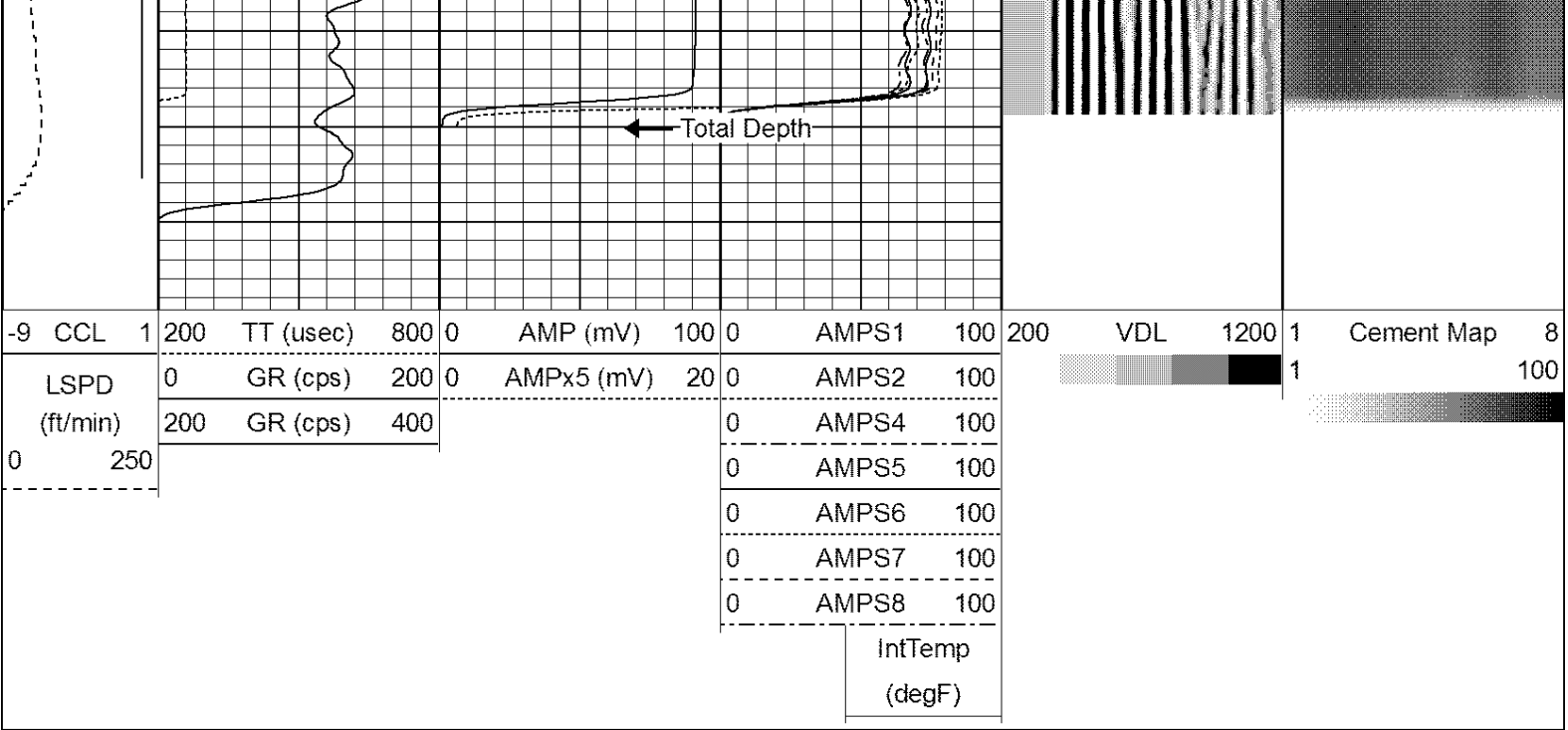
77.2507

76.1302

Temperature

TT





3750

3800

3850

3900

3950

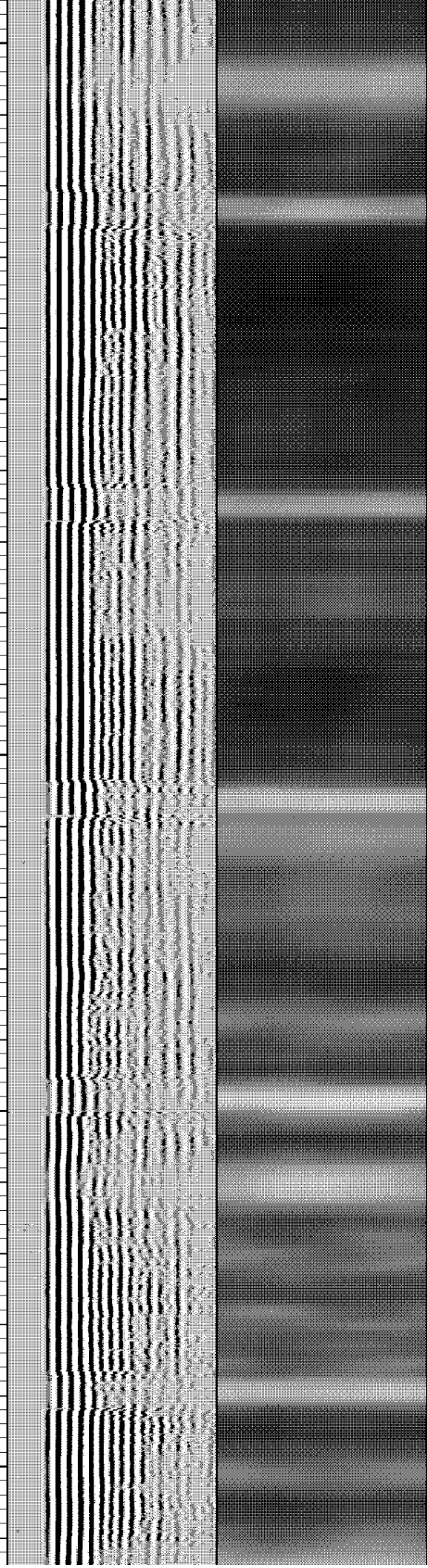
163.175

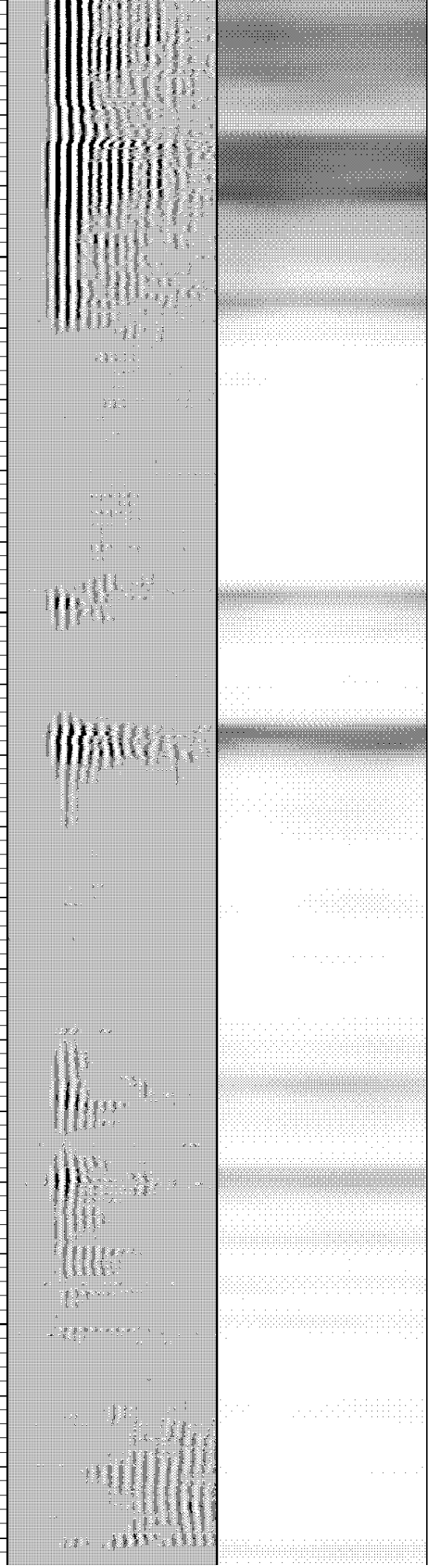
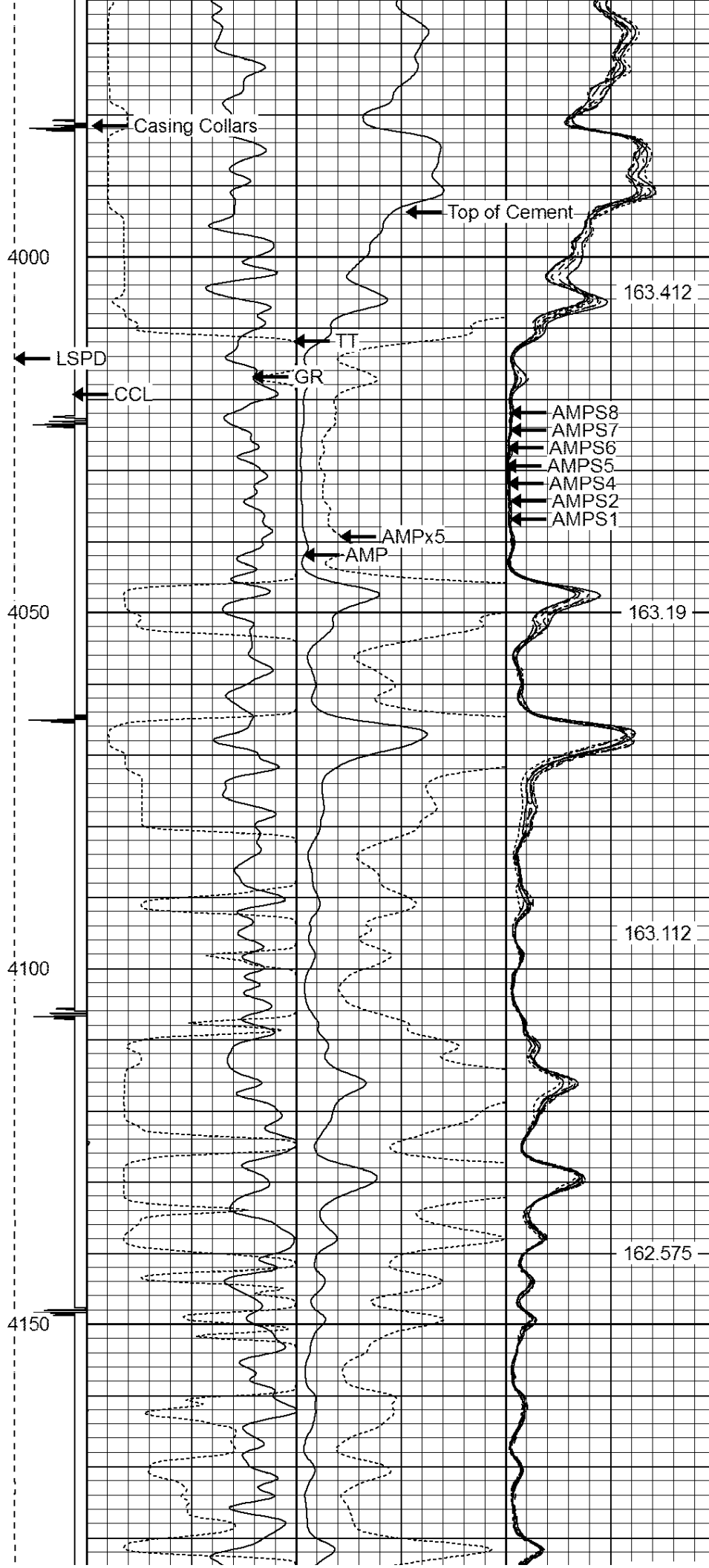
163.579

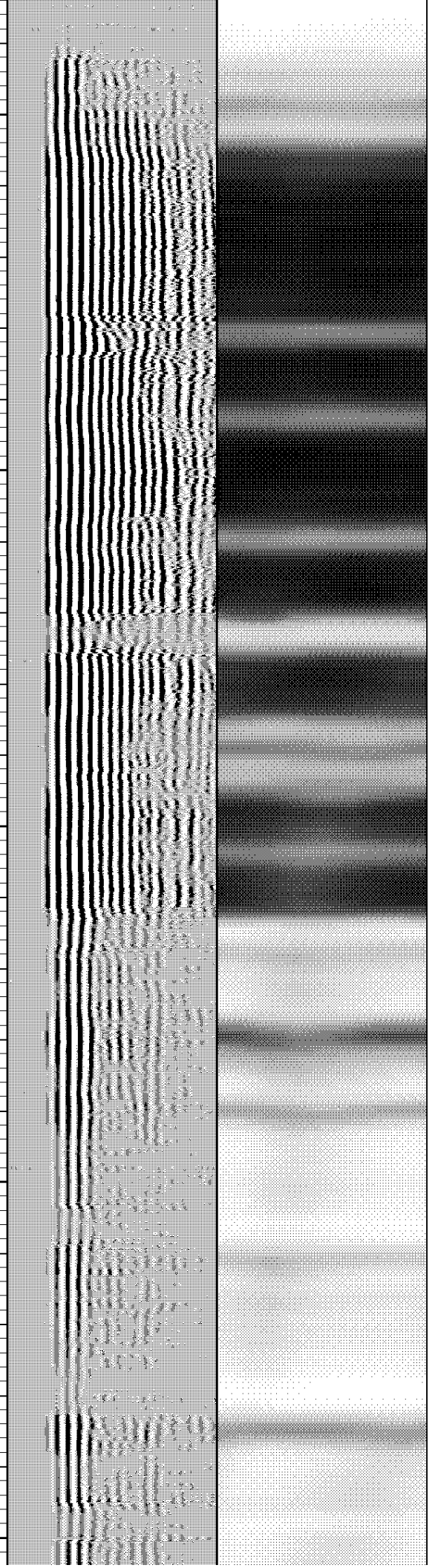
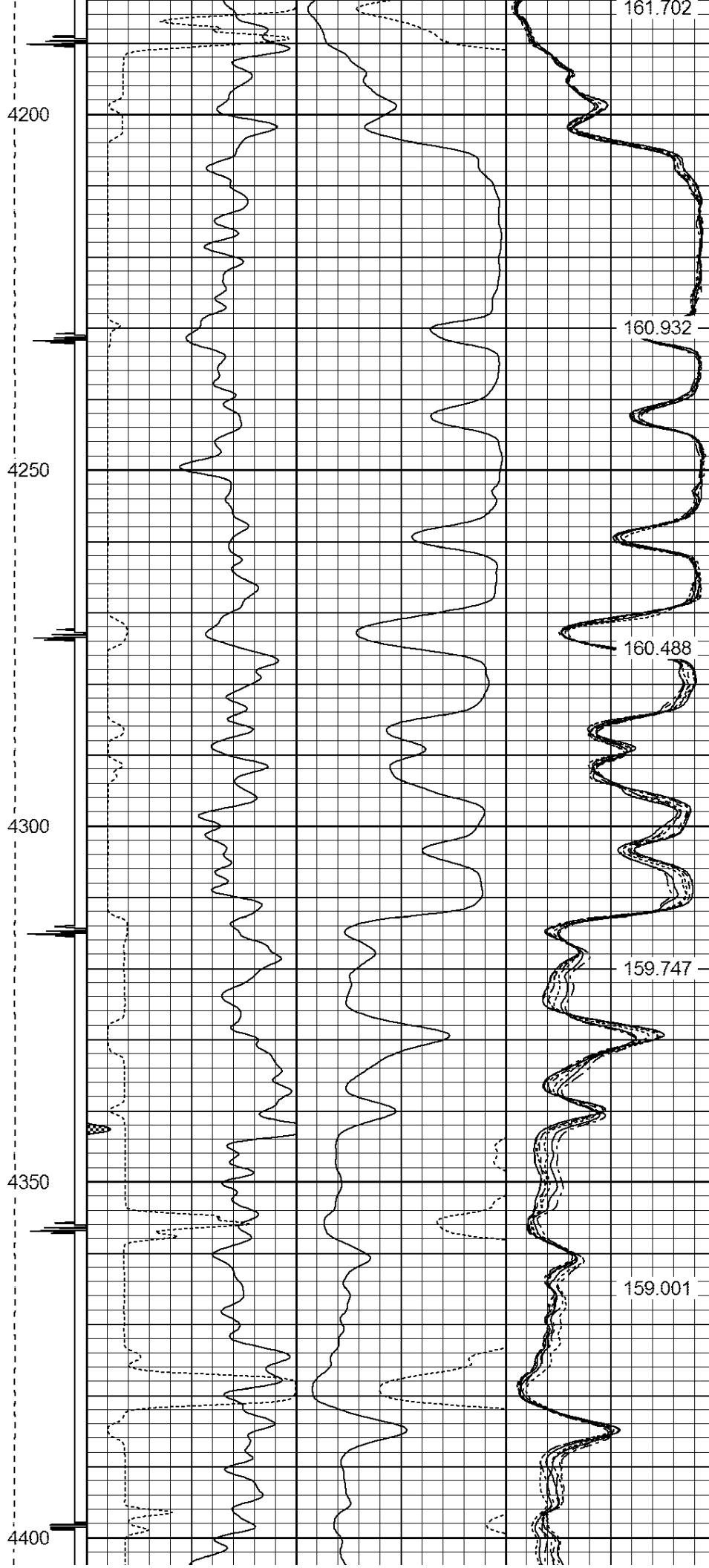
163.709

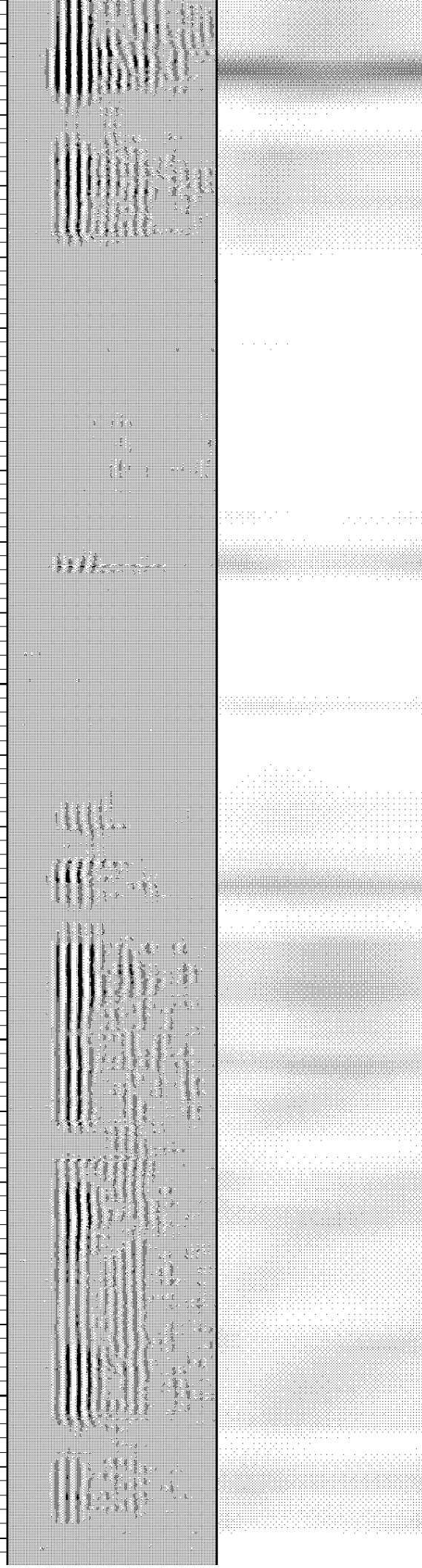
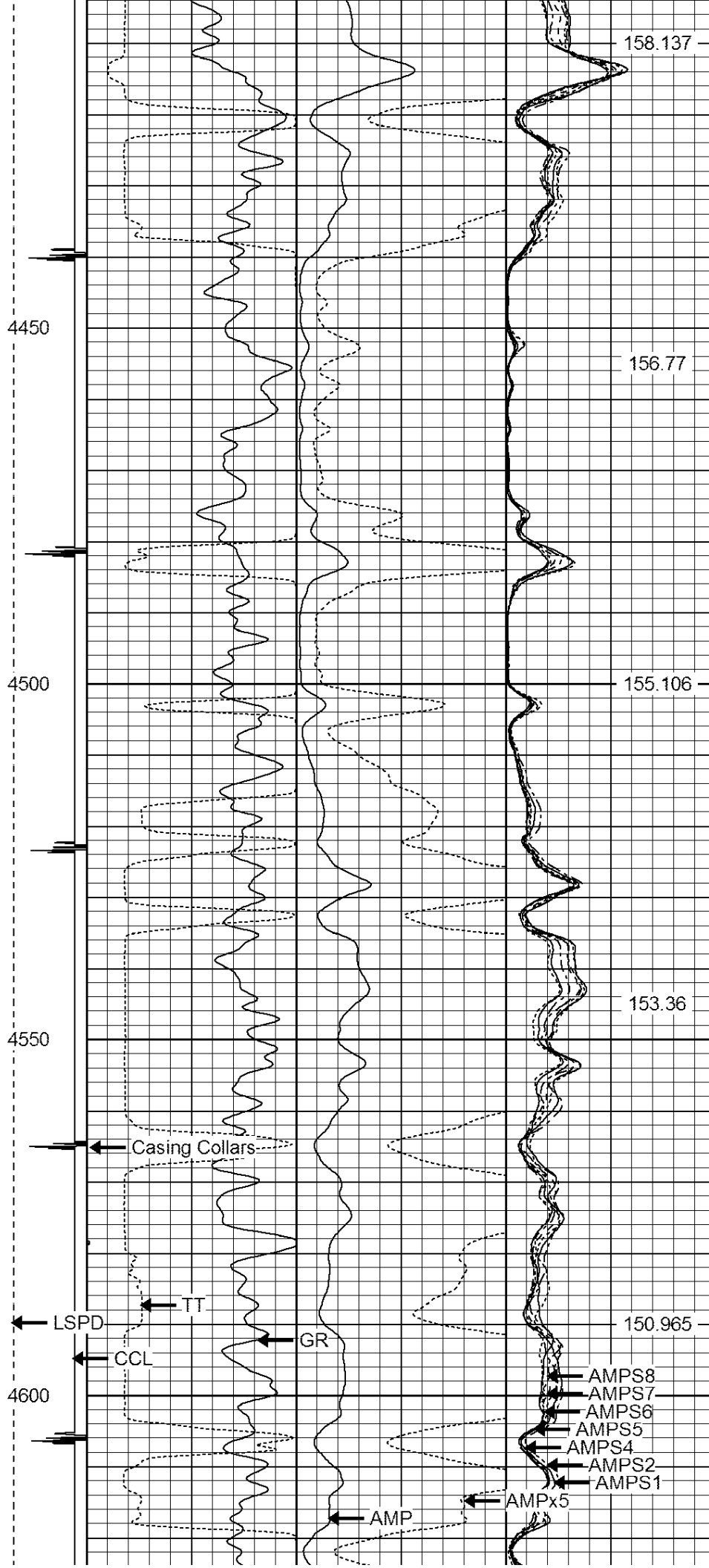
163.686

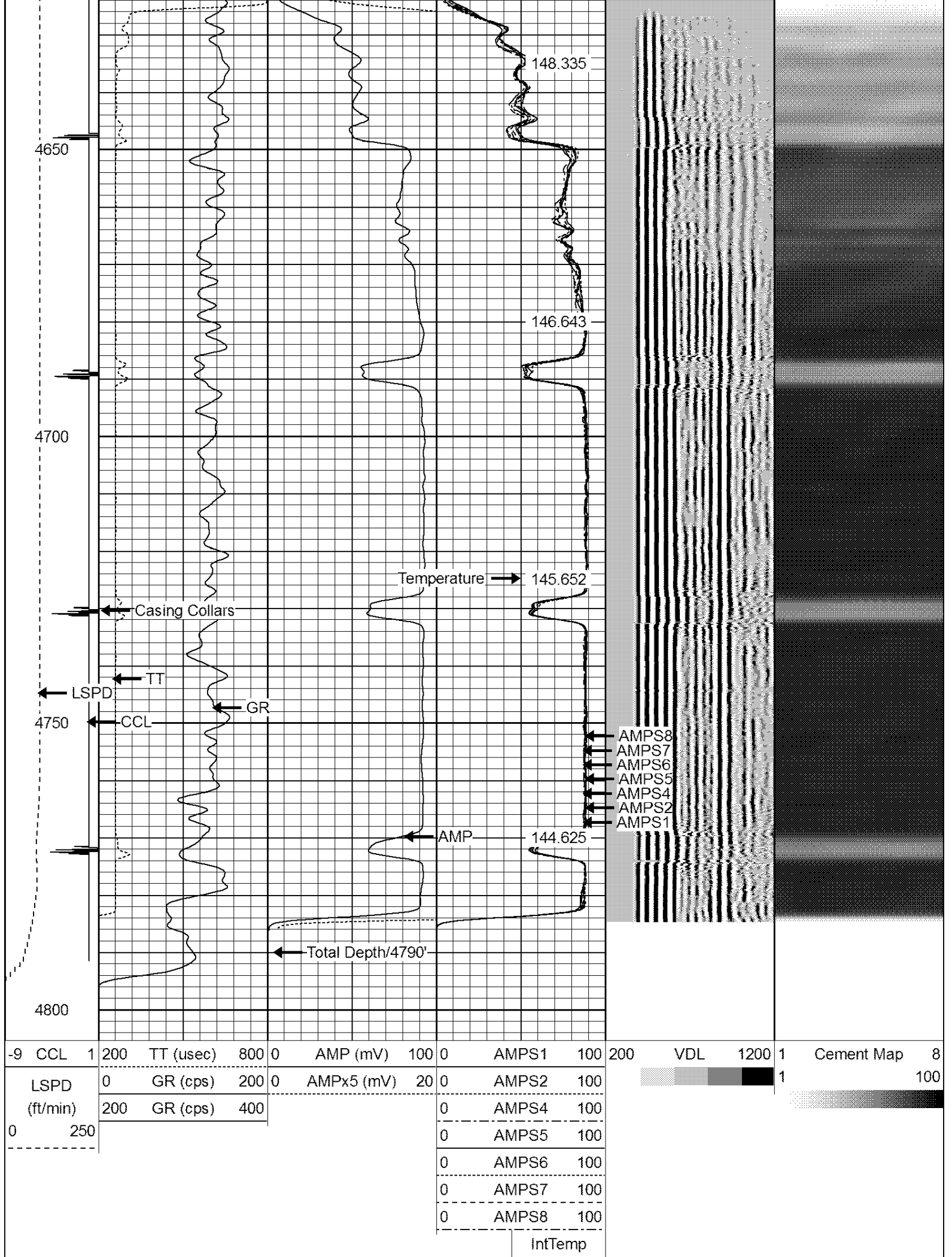
163.65



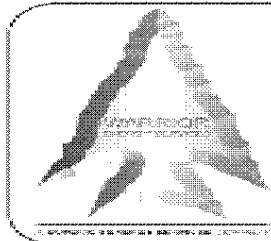








(degF)



WARRIOR
ENERGY SERVICES

Company KERR-McGEE OIL & GAS ONSHORE LP

Well WADDLE 24-10J7

Field WATTENBERG

County WELD

State COLORADO