

PETROSHARE

Location:

COLORADO

Field:

ADAMS COUNTY (NAD83/ TRUE NORTH)

Facility:

SEC.03-T1S-R67W

Slot:

SLOT#06 SHOOK 3-10-2NBH (2058FSL & 2214FEL, SEC.03)

Well:

SHOOK 3-10-2NBH

Wellbore:

SHOOK 3-10-2NBH PWB

Plot reference wellpath is SHOOK 3-10-2NBH PWP (REV-A.0)

True vertical depths are referenced to RIG (16KB) (RKB)	Grid System: NAD83 / Lambert Colorado SP, Northern Zone (501), US feet
Measured depths are referenced to RIG (16KB) (RKB)	North Reference: True north
RIG (16KB) (RKB) to Mean Sea Level: 5113 feet	Scale: True distance
Mean Sea Level to Mud line (At Slot: SLOT#06 SHOOK 3-10-2NBH (2058FSL & 2214FEL, SEC.03)): 0 feet	Depths are in feet
Coordinates are in feet referenced to Slot	Created by: ingmjmr on 12/29/2015

Location Information

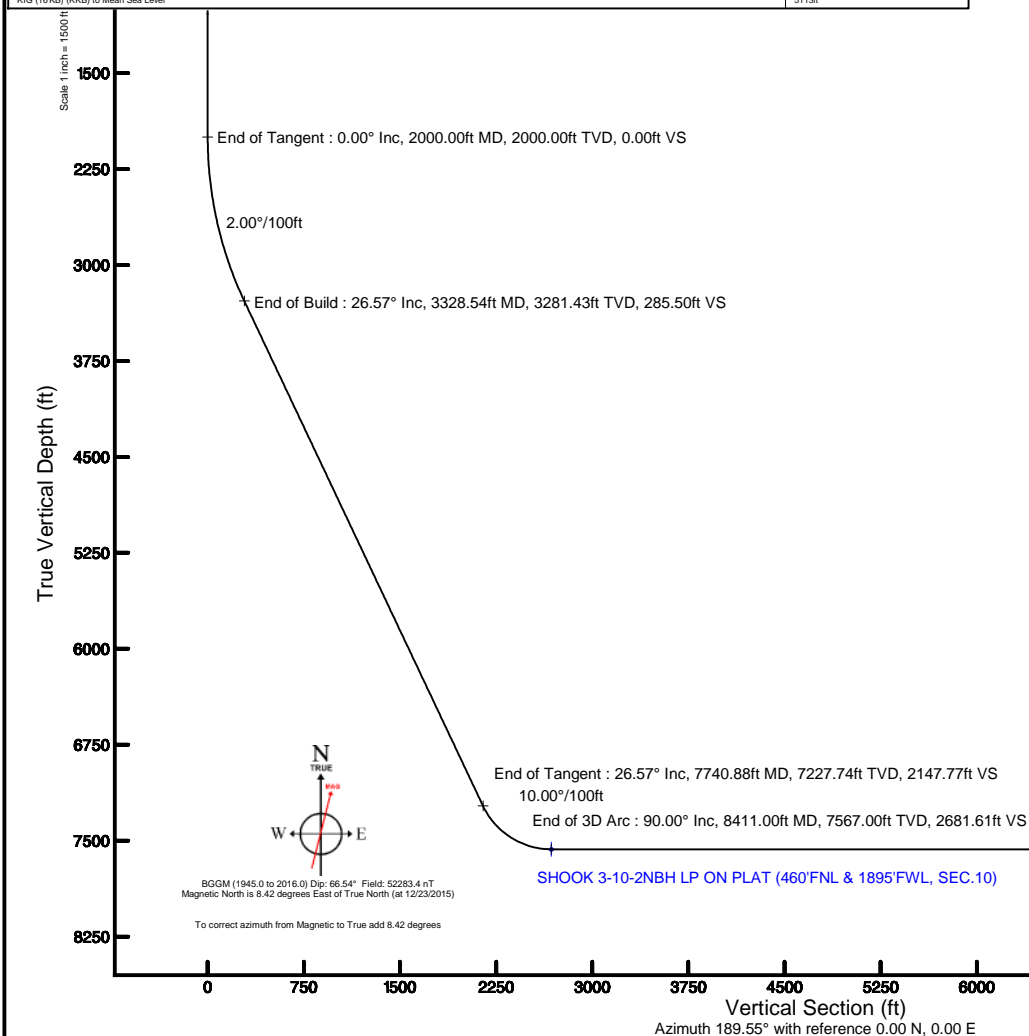
Facility Name			Grid East (US ft)	Grid North (US ft)	Latitude	Longitude
SEC.03-T1S-R67W			3175478.751	1240632.475	39°59'31.992"N	104°52'25.320"W
Slot	Local N (ft)	Local E (ft)	Grid East (US ft)	Grid North (US ft)	Latitude	Longitude
SLOT#06 SHOOK 3-10-2NBH (2058FSL & 2214FEL, SEC.03)	0.00	72.85	3175551.598	1240632.990	39°59'31.992"N	104°52'24.384"W
RIG (16KB) (RKB) to Mud line (At Slot: SLOT#06 SHOOK 3-10-2NBH (2058FSL & 2214FEL, SEC.03))					5113ft	
Mean Sea Level to Mud line (At Slot: SLOT#06 SHOOK 3-10-2NBH (2058FSL & 2214FEL, SEC.03))					0ft	
RIG (16KB) (RKB) to Mean Sea Level					5113ft	



Well Profile Data								
Design Comment	MD (ft)	Inc (°)	Az (°)	TVD (ft)	Local N (ft)	Local E (ft)	DLS (°/100ft)	VS (ft)
Tie On	16.00	0.000	208.890	16.00	0.00	0.00	0.00	0.00
End of Tangent	2000.00	0.000	208.890	2000.00	0.00	0.00	0.00	0.00
End of Build	3328.54	26.571	208.890	3281.43	-264.92	-146.18	2.00	285.50
End of Tangent	7740.88	26.571	208.890	7227.74	-1992.96	-1099.70	0.00	2147.77
End of 3D Arc	8411.00	90.000	179.708	7567.00	-2520.83	-1179.74	10.00	2681.61
End of Tangent	12771.56	90.000	179.708	7567.00	-6881.34	-1157.53	0.00	6978.01

Start MD (ft)	End MD (ft)	Tool	Model	Log Name/Comment	Wellbore
16.00	12771.56	NavTrak	Custom NavTrak (Standard) (Rockies 0.03Gt model)		SHOOK 3-10-2NBH PWB

Name	Start MD (ft)	End MD (ft)	Interval (ft)	Start TVD (ft)	End TVD (ft)	Start Local N (ft)	Start Local E (ft)	End Local N (ft)	End Local E (ft)	Wellbore
13.5in Open Hole	16.00	800.00	784.00	16.00	800.00	0.00	0.00	0.00	0.00	SHOOK 3-10-2NBH PWB
9.625in Casing Surface	16.00	800.00	784.00	16.00	800.00	0.00	0.00	0.00	0.00	SHOOK 3-10-2NBH PWB
8.5in Open Hole	800.00	12771.56	11971.56	800.00	7567.00	0.00	0.00	-6881.34	-1157.53	SHOOK 3-10-2NBH PWB
5.5in Casing Production	16.00	12771.56	12755.56	16.00	7567.00	0.00	0.00	-6881.34	-1157.53	SHOOK 3-10-2NBH PWB



PETROSHARE

Location: COLORADO	Slot: SLOT#01 SHOOK 3-10-1CDH (2058'FSL & 2289'FEL, SEC.03)
Field: ADAMS COUNTY (NAD83/ TRUE NORTH)	Well: SHOOK 3-10-1CDH
Facility: SEC.03-T1S-R67W	Wellbore: SHOOK 3-10-1CDH PWB

Scale 1 inch = 250

-1750 -1500 -1250 -1000 -750

BAKER HUGHES

PETROSHARE

SEC.03-T1S-R67W

SELTZER #23-3 AWB

▲

GREENWATER #23-3 AWB

BAY SHOOT #23-3 AWB

GREENWATER #12-3 AWB

GREENWATER #12-3 AWB

SLOT#01 SHOOK 3-10

SLOT#02 SHOOK 3-10

SLOT#03 SHOOK 3-10

SLOT#04 SHOOK 3-10

SLOT#05 SHOOK 3-10

SLOT#06 SHOOK 3-10

SLOT#07 SHOOK 3-10

True vertical depths are referenced to RIG (16KB) (RKB)	Grid System: NAD83 / Lambert Colorado SP, Northern Zone (501), US feet
Measured depths are referenced to RIG (16KB) (RKB)	North Reference: True north
RIG (16KB) (RKB) to Mean Sea Level: 5114 feet	Scale: True distance
Mean Sea Level to Mud line (At Slot: SLOT#01 SHOOK 3-10-1CDH (2058FSL & 2289FEL, SEC.03)): 0 feet	Depths are in feet
Coordinates are in feet referenced to Slot	Created by: ingmjahr on 12/29/2015

Eastings (ft)

Northings (ft)

Legend:

- 1CDH (2058'FSL & 2289'FEL, SEC.03)
- 1NCH (2058'FSL & 2274'FEL, SEC.03)
- 1NBH (2058'FSL & 2259'FEL, SEC.03)
- 2CDH (2058'FSL & 2244'FEL, SEC.03)
- 1NAH (2058'FSL & 2229'FEL, SEC.03)
- 2NBH (2058'FSL & 2214'FEL, SEC.03)
- 3CDH (2058'FSL & 2199'FEL, SEC.03)

MOORE #3-1 AWB

TRUE

MAG

W E

MOORE #3-1 AWB

BGGM (1945.0 to 2016.0) Dip: 66.54° Field: 52283.3 nT
Magnetic North is 8.42 degrees East of True North (at 12/23/2015)

To correct azimuth from Magnetic to True add 8.42 degrees

SLOT#01 SHOOK 3-10-1CDH (2058 FSL & 2289 FSL SEC.03)
SLOT#02 SHOOK 3-10-1NCH (2058 FSL & 2274 FSL SEC.03)
SLOT#03 SHOOK 3-10-1NBH (2058 FSL & 2259 FSL SEC.03)
SLOT#04 SHOOK 3-10-2CDH (2058 FSL & 2244 FSL SEC.03)
SLOT#05 SHOOK 3-10-1NAH (2058 FSL & 2229 FSL SEC.03)
SLOT#06 SHOOK 3-10-2NBH (2058 FSL & 2214 FSL SEC.03)
SLOT#07 SHOOK 3-10-3CDH (2058 FSL & 2199 FSL SEC.03)

GREINER #36N-3HZ A4VB

GREENE

SELTZER #23-3 AWB

GRENNEMYER #35C-3HZ A W B

GREENEYER #35N-3HZ AWB

GRENNEMYER #14C-3HZ A/VB

MOORE #3-1 AWB



BGGM (1945.0 to 2016.0) Dip: 66.54° Field: 52283.3 nT
Magnetic North is 8.42 degrees East of True North (at 12/23/2015)

To correct azimuth from Magnetic to True add 8.42 degrees

To correct azimuth from Magnetic to True add 8.42 degrees

PETROSHARE

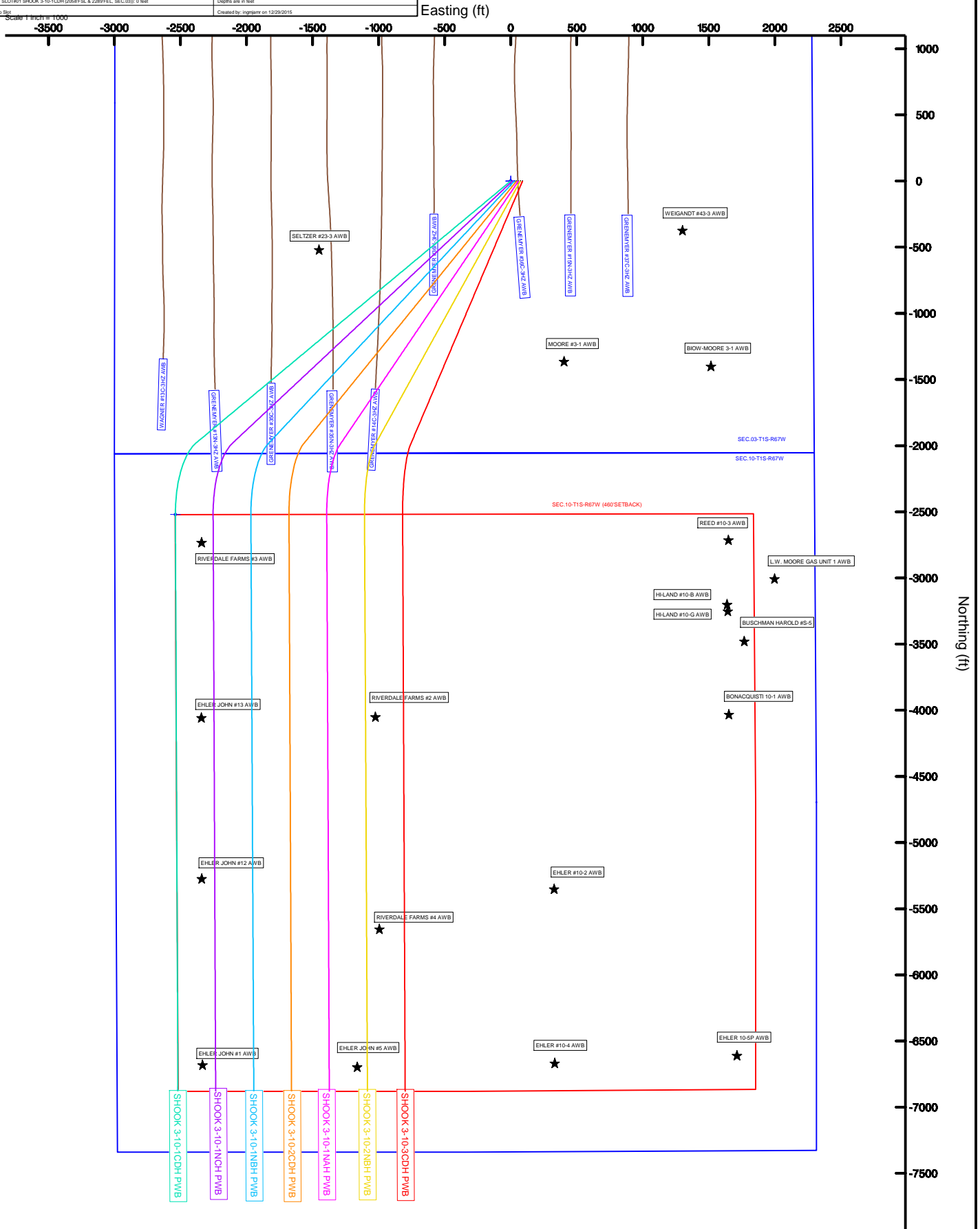
Location: COLORADO Slot: SLOTH01 SHOOK 3-10-1CDH (2058FSL & 2289FEL, SEC.03)
Field: ADAMS COUNTY (NAD83/ TRUE NORTH) Well: SHOOK 3-10-1CDH
Facility: SEC.03-T1S-R67W Wellbore: SHOOK 3-10-1CDH PWB

Plot reference wellbore is SHOOK 3-10-1CDH PWB (REV.A-0)	
True vertical depths are referenced to RIG (16XB) (RKB)	Grid System: NAD83 / Lambert Colorado SP, Northern Zone (501), US feet
Measured depths are referenced to RIG (16XB) (RKB)	North Reference: True north
RIG (16XB) (RKB) to Mean Sea Level: 5114 feet	Scale: True distance
Mean Sea Level to Mudline (at Slot: SLOTH01 SHOOK 3-10-1CDH (2058FSL & 2289FEL, SEC.03): 0 feet	Depths are in feet
Coordinates are in feet referenced to Slot	Created by: inggggg on 12/29/2015



BGGM (1945.0 to 2016.0) Dip: 66.54° Field: 52283.3 nT
Magnetic North is 8.42 degrees East of True North (at 12/23/2015)

To correct azimuth from Magnetic to True add 8.42 degrees





Planned Wellpath Report

SHOOK 3-10-2NBH PWP (REV-A.0)

Page 1 of 6



REFERENCE WELLPATH IDENTIFICATION

Operator	PETROSHARE	Slot	SLOT#06 SHOOK 3-10-2NBH (2058'FSL & 2214'FEL, SEC.03)
Area	COLORADO	Well	SHOOK 3-10-2NBH
Field	ADAMS COUNTY (NAD83/ TRUE NORTH)	Wellbore	SHOOK 3-10-2NBH PWB
Facility	SEC.03-T1S-R67W		

REPORT SETUP INFORMATION

Projection System	NAD83 / Lambert Colorado SP, Northern Zone (501), US feet	Software System	WellArchitect® 4.1.1
North Reference	True	User	Ingmjmr
Scale	0.999967	Report Generated	12/29/2015 at 8:37:08 AM
Convergence at slot	0.40° East	Database/Source file	WA_DEN_Denver_Defn/SHOOK_3-10-2NBH_PWB.xml

WELLPATH LOCATION

	Local coordinates		Grid coordinates		Geographic coordinates	
	North[ft]	East[ft]	Easting[US ft]	Northing[US ft]	Latitude	Longitude
Slot Location	0.00	72.85	3175551.60	1240632.99	39°59'31.992"N	104°52'24.384"W
Facility Reference Pt			3175478.75	1240632.48	39°59'31.992"N	104°52'25.320"W
Field Reference Pt			3175478.75	1240632.48	39°59'31.992"N	104°52'25.320"W

WELLPATH DATUM

Calculation method	Minimum curvature	RIG (16'KB) (RKB) to Facility Vertical Datum	5113.00ft
Horizontal Reference Pt	Slot	RIG (16'KB) (RKB) to Mean Sea Level	5113.00ft
Vertical Reference Pt	RIG (16'KB) (RKB)	RIG (16'KB) (RKB) to Mud Line at Slot (SLOT#06 SHOOK 3-10-2NBH (2058'FSL & 2214'FEL, SEC.03))	5113.00ft
MD Reference Pt	RIG (16'KB) (RKB)	Section Origin	N 0.00, E 0.00 ft
Field Vertical Reference	Mean Sea Level	Section Azimuth	189.55°



Planned Wellpath Report

SHOOK 3-10-2NBH PWP (REV-A.0)

Page 2 of 6



REFERENCE WELLPATH IDENTIFICATION

Operator	PETROSHARE	Slot	SLOT#06 SHOOK 3-10-2NBH (2058'FSL & 2214'FEL, SEC.03)
Area	COLORADO	Well	SHOOK 3-10-2NBH
Field	ADAMS COUNTY (NAD83/ TRUE NORTH)	Wellbore	SHOOK 3-10-2NBH PWB
Facility	SEC.03-T1S-R67W		

WELLPATH DATA (138 stations) † = interpolated/extrapolated station

MD [ft]	Inclination [°]	Azimuth [°]	TVD [ft]	Vert Sect [ft]	North [ft]	East [ft]	DLS [°/100ft]	Comments
0.00†	0.000	208.890	0.00	0.00	0.00	0.00	0.00	
16.00	0.000	208.890	16.00	0.00	0.00	0.00	0.00	Tie On
116.00†	0.000	208.890	116.00	0.00	0.00	0.00	0.00	
216.00†	0.000	208.890	216.00	0.00	0.00	0.00	0.00	
316.00†	0.000	208.890	316.00	0.00	0.00	0.00	0.00	
416.00†	0.000	208.890	416.00	0.00	0.00	0.00	0.00	
516.00†	0.000	208.890	516.00	0.00	0.00	0.00	0.00	
616.00†	0.000	208.890	616.00	0.00	0.00	0.00	0.00	
716.00†	0.000	208.890	716.00	0.00	0.00	0.00	0.00	
745.00†	0.000	208.890	745.00	0.00	0.00	0.00	0.00	FOX HILLS
816.00†	0.000	208.890	816.00	0.00	0.00	0.00	0.00	
916.00†	0.000	208.890	916.00	0.00	0.00	0.00	0.00	
1016.00†	0.000	208.890	1016.00	0.00	0.00	0.00	0.00	
1116.00†	0.000	208.890	1116.00	0.00	0.00	0.00	0.00	
1216.00†	0.000	208.890	1216.00	0.00	0.00	0.00	0.00	
1316.00†	0.000	208.890	1316.00	0.00	0.00	0.00	0.00	
1416.00†	0.000	208.890	1416.00	0.00	0.00	0.00	0.00	
1516.00†	0.000	208.890	1516.00	0.00	0.00	0.00	0.00	
1616.00†	0.000	208.890	1616.00	0.00	0.00	0.00	0.00	
1716.00†	0.000	208.890	1716.00	0.00	0.00	0.00	0.00	
1816.00†	0.000	208.890	1816.00	0.00	0.00	0.00	0.00	
1916.00†	0.000	208.890	1916.00	0.00	0.00	0.00	0.00	
2000.00	0.000	208.890	2000.00	0.00	0.00	0.00	0.00	End of Tangent
2016.00†	0.320	208.890	2016.00	0.04	-0.04	-0.02	2.00	
2116.00†	2.320	208.890	2115.97	2.22	-2.06	-1.13	2.00	
2216.00†	4.320	208.890	2215.80	7.68	-7.13	-3.93	2.00	
2316.00†	6.320	208.890	2315.36	16.43	-15.24	-8.41	2.00	
2416.00†	8.320	208.890	2414.54	28.45	-26.40	-14.57	2.00	
2516.00†	10.320	208.890	2513.21	43.73	-40.58	-22.39	2.00	
2616.00†	12.320	208.890	2611.26	62.25	-57.76	-31.87	2.00	
2716.00†	14.320	208.890	2708.57	83.99	-77.93	-43.00	2.00	
2816.00†	16.320	208.890	2805.01	108.92	-101.07	-55.77	2.00	
2916.00†	18.320	208.890	2900.47	137.00	-127.13	-70.15	2.00	
3016.00†	20.320	208.890	2994.84	168.22	-156.10	-86.13	2.00	
3116.00†	22.320	208.890	3087.99	202.52	-187.93	-103.70	2.00	
3216.00†	24.320	208.890	3179.81	239.88	-222.59	-122.82	2.00	
3316.00†	26.320	208.890	3270.20	280.23	-260.03	-143.48	2.00	
3328.54	26.571	208.890	3281.43	285.50	-264.92	-146.18	2.00	End of Build
3416.00†	26.571	208.890	3359.65	322.41	-299.17	-165.08	0.00	
3516.00†	26.571	208.890	3449.09	364.62	-338.33	-186.69	0.00	
3616.00†	26.571	208.890	3538.53	406.82	-377.50	-208.30	0.00	
3716.00†	26.571	208.890	3627.97	449.03	-416.66	-229.91	0.00	
3816.00†	26.571	208.890	3717.40	491.23	-455.83	-251.52	0.00	
3916.00†	26.571	208.890	3806.84	533.44	-494.99	-273.13	0.00	
4016.00†	26.571	208.890	3896.28	575.65	-534.15	-294.74	0.00	



Planned Wellpath Report

SHOOK 3-10-2NBH PWP (REV-A.0)

Page 3 of 6



REFERENCE WELLPATH IDENTIFICATION

Operator	PETROSHARE	Slot	SLOT#06 SHOOK 3-10-2NBH (2058'FSL & 2214'FEL, SEC.03)
Area	COLORADO	Well	SHOOK 3-10-2NBH
Field	ADAMS COUNTY (NAD83/ TRUE NORTH)	Wellbore	SHOOK 3-10-2NBH PWB
Facility	SEC.03-T1S-R67W		

WELLPATH DATA (138 stations) † = interpolated/extrapolated station

MD [ft]	Inclination [°]	Azimuth [°]	TVD [ft]	Vert Sect [ft]	North [ft]	East [ft]	DLS [°/100ft]	Comments
4116.00†	26.571	208.890	3985.72	617.85	-573.32	-316.35	0.00	
4216.00†	26.571	208.890	4075.16	660.06	-612.48	-337.96	0.00	
4316.00†	26.571	208.890	4164.60	702.26	-651.65	-359.57	0.00	
4416.00†	26.571	208.890	4254.03	744.47	-690.81	-381.18	0.00	
4516.00†	26.571	208.890	4343.47	786.68	-729.97	-402.79	0.00	
4616.00†	26.571	208.890	4432.91	828.88	-769.14	-424.40	0.00	
4716.00†	26.571	208.890	4522.35	871.09	-808.30	-446.02	0.00	
4816.00†	26.571	208.890	4611.79	913.29	-847.46	-467.63	0.00	
4916.00†	26.571	208.890	4701.22	955.50	-886.63	-489.24	0.00	
5016.00†	26.571	208.890	4790.66	997.71	-925.79	-510.85	0.00	
5116.00†	26.571	208.890	4880.10	1039.91	-964.96	-532.46	0.00	
5143.84†	26.571	208.890	4905.00	1051.66	-975.86	-538.47	0.00	SUSSEX/SHANNON
5216.00†	26.571	208.890	4969.54	1082.12	-1004.12	-554.07	0.00	
5316.00†	26.571	208.890	5058.98	1124.32	-1043.28	-575.68	0.00	
5416.00†	26.571	208.890	5148.42	1166.53	-1082.45	-597.29	0.00	
5516.00†	26.571	208.890	5237.85	1208.74	-1121.61	-618.90	0.00	
5616.00†	26.571	208.890	5327.29	1250.94	-1160.78	-640.51	0.00	
5716.00†	26.571	208.890	5416.73	1293.15	-1199.94	-662.12	0.00	
5816.00†	26.571	208.890	5506.17	1335.35	-1239.10	-683.73	0.00	
5916.00†	26.571	208.890	5595.61	1377.56	-1278.27	-705.34	0.00	
6016.00†	26.571	208.890	5685.04	1419.77	-1317.43	-726.95	0.00	
6116.00†	26.571	208.890	5774.48	1461.97	-1356.60	-748.56	0.00	
6216.00†	26.571	208.890	5863.92	1504.18	-1395.76	-770.17	0.00	
6316.00†	26.571	208.890	5953.36	1546.39	-1434.92	-791.78	0.00	
6416.00†	26.571	208.890	6042.80	1588.59	-1474.09	-813.39	0.00	
6516.00†	26.571	208.890	6132.24	1630.80	-1513.25	-835.00	0.00	
6616.00†	26.571	208.890	6221.67	1673.00	-1552.41	-856.61	0.00	
6716.00†	26.571	208.890	6311.11	1715.21	-1591.58	-878.22	0.00	
6816.00†	26.571	208.890	6400.55	1757.42	-1630.74	-899.83	0.00	
6916.00†	26.571	208.890	6489.99	1799.62	-1669.91	-921.44	0.00	
7016.00†	26.571	208.890	6579.43	1841.83	-1709.07	-943.05	0.00	
7116.00†	26.571	208.890	6668.86	1884.03	-1748.23	-964.66	0.00	
7216.00†	26.571	208.890	6758.30	1926.24	-1787.40	-986.27	0.00	
7316.00†	26.571	208.890	6847.74	1968.45	-1826.56	-1007.88	0.00	
7416.00†	26.571	208.890	6937.18	2010.65	-1865.73	-1029.49	0.00	
7516.00†	26.571	208.890	7026.62	2052.86	-1904.89	-1051.11	0.00	
7616.00†	26.571	208.890	7116.05	2095.06	-1944.05	-1072.72	0.00	
7716.00†	26.571	208.890	7205.49	2137.27	-1983.22	-1094.33	0.00	
7740.88	26.571	208.890	7227.74	2147.77	-1992.96	-1099.70	0.00	End of Tangent
7816.00†	33.165	201.618	7292.87	2183.77	-2026.82	-1115.41	10.00	
7916.00†	42.374	195.211	7371.87	2244.20	-2084.92	-1134.38	10.00	
7949.52†	45.525	193.561	7396.00	2267.38	-2107.45	-1140.15	10.00	NIOBRARA A CHALK
7998.71†	50.186	191.436	7429.00	2303.79	-2143.05	-1148.01	10.00	NIOBRARA B MARL
8016.00†	51.832	190.758	7439.88	2317.22	-2156.23	-1150.60	10.00	
8116.00†	61.419	187.342	7494.83	2400.61	-2238.61	-1163.58	10.00	



Planned Wellpath Report

SHOOK 3-10-2NBH PWP (REV-A.0)

Page 4 of 6



REFERENCE WELLPATH IDENTIFICATION

Operator	PETROSHARE	Slot	SLOT#06 SHOOK 3-10-2NBH (2058'FSL & 2214'FEL, SEC.03)
Area	COLORADO	Well	SHOOK 3-10-2NBH
Field	ADAMS COUNTY (NAD83/ TRUE NORTH)	Wellbore	SHOOK 3-10-2NBH PWB
Facility	SEC.03-T1S-R67W		

WELLPATH DATA (138 stations) † = interpolated/extrapolated station

MD [ft]	Inclination [°]	Azimuth [°]	TVD [ft]	Vert Sect [ft]	North [ft]	East [ft]	DLS [°/100ft]	Comments
8216.00†	71.077	184.504	7535.07	2491.83	-2329.54	-1172.93	10.00	
8316.00†	80.773	181.978	7559.37	2588.11	-2426.26	-1178.36	10.00	
8411.00	90.000	179.708	7567.00 ¹	2681.61	-2520.83	-1179.74	10.00	End of 3D Arc
8416.00†	90.000	179.708	7567.00	2686.53	-2525.83	-1179.72	0.00	
8516.00†	90.000	179.708	7567.00	2785.06	-2625.83	-1179.21	0.00	
8616.00†	90.000	179.708	7567.00	2883.59	-2725.83	-1178.70	0.00	
8716.00†	90.000	179.708	7567.00	2982.12	-2825.83	-1178.19	0.00	
8816.00†	90.000	179.708	7567.00	3080.65	-2925.83	-1177.68	0.00	
8916.00†	90.000	179.708	7567.00	3179.18	-3025.83	-1177.17	0.00	
9016.00†	90.000	179.708	7567.00	3277.71	-3125.82	-1176.66	0.00	
9116.00†	90.000	179.708	7567.00	3376.23	-3225.82	-1176.15	0.00	
9216.00†	90.000	179.708	7567.00	3474.76	-3325.82	-1175.64	0.00	
9316.00†	90.000	179.708	7567.00	3573.29	-3425.82	-1175.13	0.00	
9416.00†	90.000	179.708	7567.00	3671.82	-3525.82	-1174.62	0.00	
9516.00†	90.000	179.708	7567.00	3770.35	-3625.82	-1174.11	0.00	
9616.00†	90.000	179.708	7567.00	3868.88	-3725.82	-1173.60	0.00	
9716.00†	90.000	179.708	7567.00	3967.41	-3825.82	-1173.09	0.00	
9816.00†	90.000	179.708	7567.00	4065.94	-3925.81	-1172.58	0.00	
9916.00†	90.000	179.708	7567.00	4164.46	-4025.81	-1172.07	0.00	
10016.00†	90.000	179.708	7567.00	4262.99	-4125.81	-1171.57	0.00	
10116.00†	90.000	179.708	7567.00	4361.52	-4225.81	-1171.06	0.00	
10216.00†	90.000	179.708	7567.00	4460.05	-4325.81	-1170.55	0.00	
10316.00†	90.000	179.708	7567.00	4558.58	-4425.81	-1170.04	0.00	
10416.00†	90.000	179.708	7567.00	4657.11	-4525.81	-1169.53	0.00	
10516.00†	90.000	179.708	7567.00	4755.64	-4625.81	-1169.02	0.00	
10616.00†	90.000	179.708	7567.00	4854.17	-4725.80	-1168.51	0.00	
10716.00†	90.000	179.708	7567.00	4952.69	-4825.80	-1168.00	0.00	
10816.00†	90.000	179.708	7567.00	5051.22	-4925.80	-1167.49	0.00	
10916.00†	90.000	179.708	7567.00	5149.75	-5025.80	-1166.98	0.00	
11016.00†	90.000	179.708	7567.00	5248.28	-5125.80	-1166.47	0.00	
11116.00†	90.000	179.708	7567.00	5346.81	-5225.80	-1165.96	0.00	
11216.00†	90.000	179.708	7567.00	5445.34	-5325.80	-1165.45	0.00	
11316.00†	90.000	179.708	7567.00	5543.87	-5425.80	-1164.94	0.00	
11416.00†	90.000	179.708	7567.00	5642.40	-5525.79	-1164.43	0.00	
11516.00†	90.000	179.708	7567.00	5740.92	-5625.79	-1163.92	0.00	
11616.00†	90.000	179.708	7567.00	5839.45	-5725.79	-1163.41	0.00	
11716.00†	90.000	179.708	7567.00	5937.98	-5825.79	-1162.90	0.00	
11816.00†	90.000	179.708	7567.00	6036.51	-5925.79	-1162.40	0.00	
11916.00†	90.000	179.708	7567.00	6135.04	-6025.79	-1161.89	0.00	
12016.00†	90.000	179.708	7567.00	6233.57	-6125.79	-1161.38	0.00	
12116.00†	90.000	179.708	7567.00	6332.10	-6225.78	-1160.87	0.00	
12216.00†	90.000	179.708	7567.00	6430.63	-6325.78	-1160.36	0.00	
12316.00†	90.000	179.708	7567.00	6529.15	-6425.78	-1159.85	0.00	
12416.00†	90.000	179.708	7567.00	6627.68	-6525.78	-1159.34	0.00	
12516.00†	90.000	179.708	7567.00	6726.21	-6625.78	-1158.83	0.00	



Planned Wellpath Report

SHOOK 3-10-2NBH PWP (REV-A.0)

Page 5 of 6



REFERENCE WELLPATH IDENTIFICATION

Operator	PETROSHARE	Slot	SLOT#06 SHOOK 3-10-2NBH (2058'FSL & 2214'FEL, SEC.03)
Area	COLORADO	Well	SHOOK 3-10-2NBH
Field	ADAMS COUNTY (NAD83/ TRUE NORTH)	Wellbore	SHOOK 3-10-2NBH PWB
Facility	SEC.03-T1S-R67W		

WELLPATH DATA (138 stations) † = interpolated/extrapolated station

MD [ft]	Inclination [°]	Azimuth [°]	TVD [ft]	Vert Sect [ft]	North [ft]	East [ft]	DLS [°/100ft]	Comments
12616.00†	90.000	179.708	7567.00	6824.74	-6725.78	-1158.32	0.00	
12716.00†	90.000	179.708	7567.00	6923.27	-6825.78	-1157.81	0.00	
12771.56	90.000	179.708	7567.00 ²	6978.01	-6881.34	-1157.53	0.00	End of Tangent; NIOBRARA B CHALK

HOLE & CASING SECTIONS - Ref Wellbore: SHOOK 3-10-2NBH PWB Ref Wellpath: SHOOK 3-10-2NBH PWP (REV-A.0)

String/Diameter	Start MD [ft]	End MD [ft]	Interval [ft]	Start TVD [ft]	End TVD [ft]	Start N/S [ft]	Start E/W [ft]	End N/S [ft]	End E/W [ft]
13.5in Open Hole	16.00	800.00	784.00	16.00	800.00	0.00	0.00	0.00	0.00
9.625in Casing Surface	16.00	800.00	784.00	16.00	800.00	0.00	0.00	0.00	0.00
8.5in Open Hole	800.00	12771.56	11971.56	800.00	7567.00	0.00	0.00	-6881.34	-1157.53
5.5in Casing Production	16.00	12771.56	12755.56	16.00	7567.00	0.00	0.00	-6881.34	-1157.53

TARGETS

Name	MD [ft]	TVD [ft]	North [ft]	East [ft]	Grid East [US ft]	Grid North [US ft]	Latitude	Longitude	Shape
SEC.03-T1S-R67W		-1.00	0.00	-72.85	3175478.75	1240632.48	39°59'31.992"N	104°52'25.320"W	polygon
SEC.10-T1S-R67W		-1.00	0.00	-72.85	3175478.75	1240632.48	39°59'31.992"N	104°52'25.320"W	polygon
2) SHOOK 3-10-2NBH BHL ON PLAT (460'FSL & 1895'FWL, SEC.10)	12771.56	7567.00	-6881.34	-1157.53	3174442.76	1233743.89	39°58'23.988"N	104°52'39.252"W	point
1) SHOOK 3-10-2NBH LP ON PLAT (460'FNL & 1895'FWL, SEC.10)	8411.00	7567.00	-2520.83	-1179.74	3174389.74	1238103.97	39°59'07.080"N	104°52'39.540"W	point
SEC.10-T1S-R67W (460'SETBACK)		7840.00	0.00	-72.85	3175478.75	1240632.48	39°59'31.992"N	104°52'25.320"W	polygon

SURVEY PROGRAM - Ref Wellbore: SHOOK 3-10-2NBH PWB Ref Wellpath: SHOOK 3-10-2NBH PWP (REV-A.0)

Start MD [ft]	End MD [ft]	Positional Uncertainty Model	Log Name/Comment	Wellbore
16.00	12771.56	Custom NaviTrak (Standard) (Rockies 0.03Gt model)		SHOOK 3-10-2NBH PWB



Planned Wellpath Report

SHOOK 3-10-2NBH PWP (REV-A.0)

Page 6 of 6



REFERENCE WELLPATH IDENTIFICATION

Operator	PETROSHARE	Slot	SLOT#06 SHOOK 3-10-2NBH (2058'FSL & 2214'FEL, SEC.03)
Area	COLORADO	Well	SHOOK 3-10-2NBH
Field	ADAMS COUNTY (NAD83/ TRUE NORTH)	Wellbore	SHOOK 3-10-2NBH PWB
Facility	SEC.03-T1S-R67W		

WELLPATH COMMENTS

MD [ft]	Inclination [°]	Azimuth [°]	TVD [ft]	Comment
745.00	0.000	208.890	745.00	FOX HILLS
5143.84	26.571	208.890	4905.00	SUSSEX/SHANNON
7949.52	45.525	193.561	7396.00	NIOBRARA A CHALK
7998.71	50.186	191.436	7429.00	NIOBRARA B MARL
12771.56	90.000	179.708	7567.00	NIOBRARA B CHALK

DESIGN COMMENTS

MD [ft]	Inclination [°]	Azimuth [°]	TVD [ft]	Comment
16.00	0.000	208.890	16.00	Tie On
2000.00	0.000	208.890	2000.00	End of Tangent
3328.54	26.571	208.890	3281.43	End of Build
7740.88	26.571	208.890	7227.74	End of Tangent
8411.00	90.000	179.708	7567.00	End of 3D Arc
12771.56	90.000	179.708	7567.00	End of Tangent