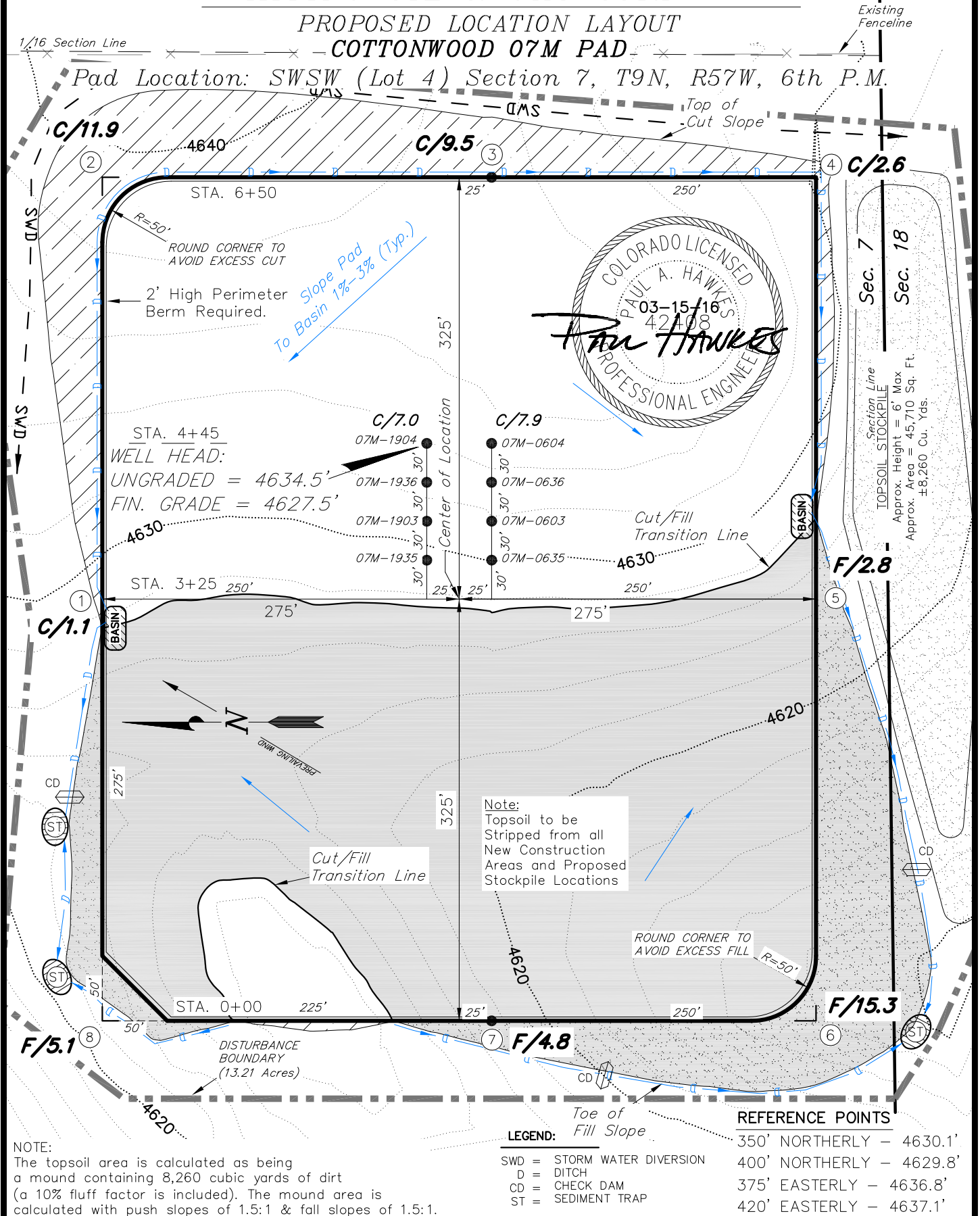


# WHITING OIL & GAS CORP.

## PROPOSED LOCATION LAYOUT

### COTTONWOOD 07M PAD

Pad Location: SWSW (Lot 4) Section 7, T9N, R57W, 6th P.M.



SURVEYED BY:	G.D.O.	DATE SURVEYED:	02-09-15
DRAWN BY:	M.W.	DATE DRAWN:	02-25-15
SCALE:	1" = 100'	REVISED:	R.V.C. 03-15-16

**Tri State**  
Land Surveying, Inc.  
180 NORTH VERNAL AVE. VERNAL, UTAH 84078  
(435) 781-2501

SHEET  
**3**