

PETROSHARE

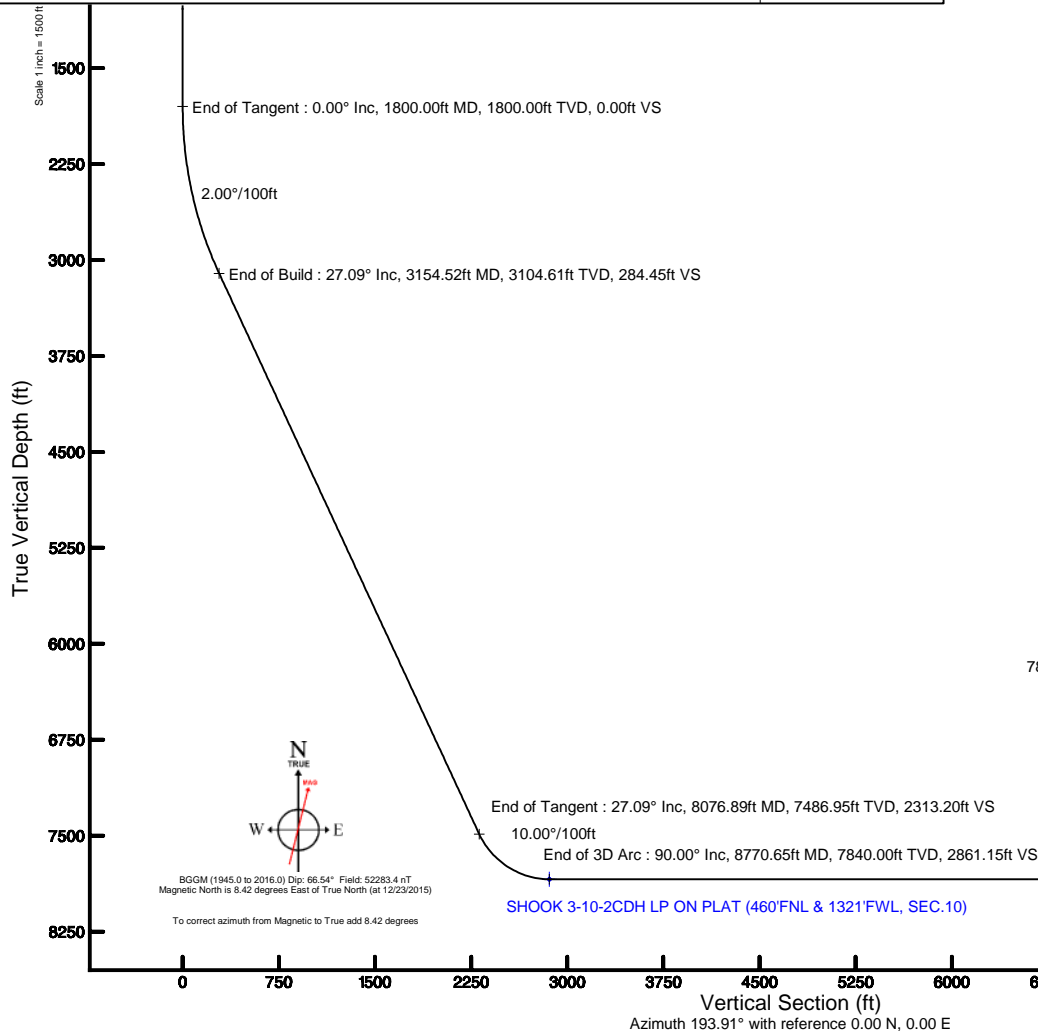
Location: COLORADO Slot: SLOT#04 SHOOK 3-10-2CDH (2058'FSL & 2244'FEL, SEC.03)
Field: ADAMS COUNTY (NAD83/ TRUE NORTH) Well: SHOOK 3-10-2CDH
Facility: SEC.03-T1S-R67W Wellbore: SHOOK 3-10-2CDH PWB

Plot reference wellpath is SHOOK 3-10-2CDH PWP (REV-A.0)

True vertical depths are referenced to RIG (16KB) (RKB) Grid System: NAD83 / Lambert Colorado SP, Northern Zone (501), US feet
Measured depths are referenced to RIG (16KB) (RKB) North Reference: True north
RIG (16KB) (RKB) to Mean Sea Level: 5114 feet Scale: True distance
Mean Sea Level to Mud line (At Slot: SLOT#04 SHOOK 3-10-2CDH (2058'FSL & 2244'FEL, SEC.03)): 0 feet Depths are in feet
Coordinates are in feet referenced to Slot Created by: ingnjamr on 12/29/2015

Location Information

Facility Name			Grid East (US ft)	Grid North (US ft)	Latitude	Longitude
SEC.03-T1S-R67W			3175478.751	1240632.475	39°59'31.992"N	104°52'25.320"W
Slot	Local N (ft)	Local E (ft)	Grid East (US ft)	Grid North (US ft)	Latitude	Longitude
SLOT#04 SHOOK 3-10-2CDH (2058'FSL & 2244'FEL, SEC.03)	0.00	44.83	3175523.580	1240632.792	39°59'31.992"N	104°52'24.744"W
RIG (16KB) (RKB) to Mud line (At Slot: SLOT#04 SHOOK 3-10-2CDH (2058'FSL & 2244'FEL, SEC.03))					5114ft	
Mean Sea Level to Mud line (At Slot: SLOT#04 SHOOK 3-10-2CDH (2058'FSL & 2244'FEL, SEC.03))					0ft	
RIG (16KB) (RKB) to Mean Sea Level					5114ft	



Well Profile Data

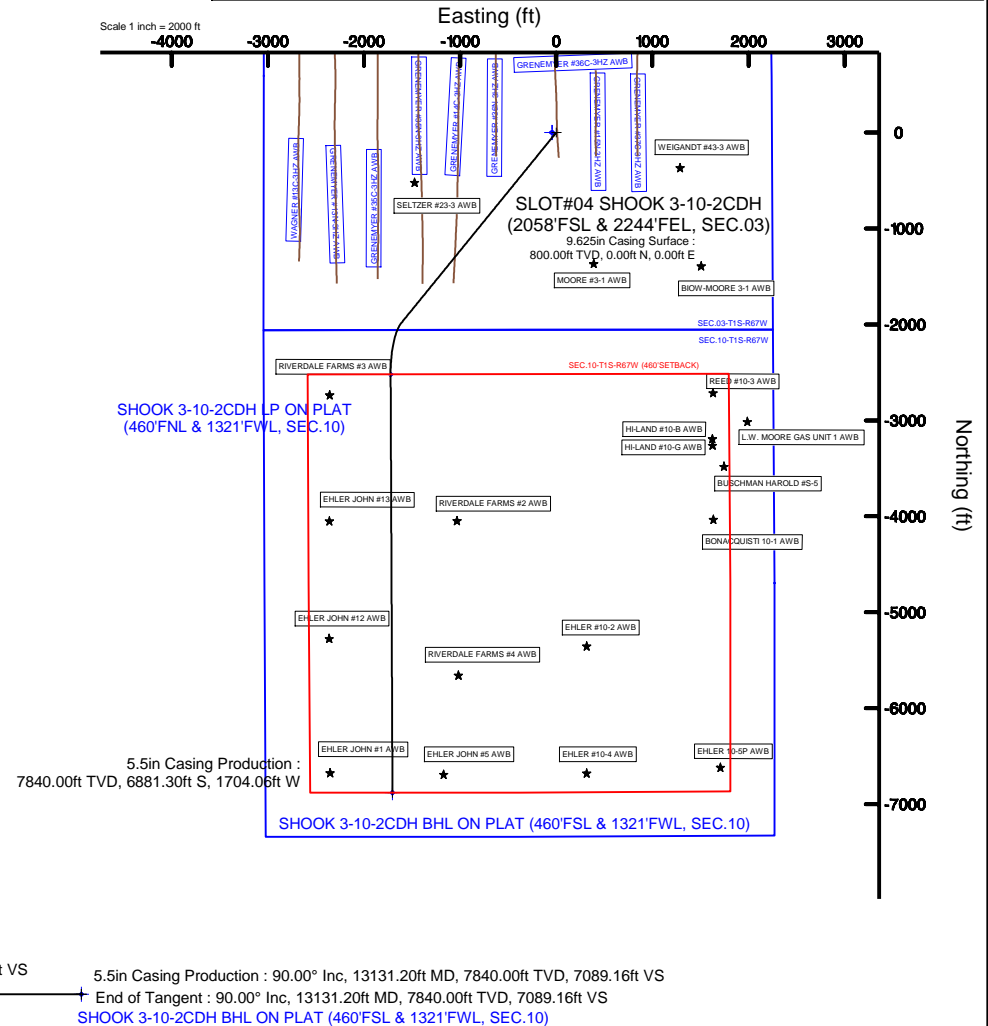
Design Comment	MD (ft)	Inc (°)	Az (°)	TVD (ft)	Local N (ft)	Local E (ft)	DLS (°/100ft)	VS (ft)
Tie On	16.00	0.000	219.081	16.00	0.00	0.00	0.00	0.00
End of Tangent	1800.00	0.000	219.081	1800.00	0.00	0.00	0.00	0.00
End of Build	3154.52	27.090	219.081	3104.61	-243.98	-198.14	2.00	284.45
End of Tangent	8076.89	27.090	219.081	7486.95	-1984.06	-1611.29	0.00	2313.20
End of 3D Arc	8770.65	90.000	179.746	7840.00	-2520.80	-1723.38	10.00	2861.15
End of Tangent	13131.20	90.000	179.746	7840.00	-6881.30	-1704.06	0.00	7089.16

Survey Program

Start MD (ft)	End MD (ft)	Tool	Model	Log Name/Comment	Wellbore
16.00	13131.20	NavTrak	Custom NavTrak (Standard) (Rockies 0.03Gt model)		SHOOK 3-10-2CDH PWB

Hole and Casing Sections

Name	Start MD (ft)	End MD (ft)	Interval (ft)	Start TVD (ft)	End TVD (ft)	Start Local N (ft)	Start Local E (ft)	End Local N (ft)	End Local E (ft)	Wellbore
13.5in Open Hole	16.00	800.00	784.00	16.00	800.00	0.00	0.00	0.00	0.00	SHOOK 3-10-2CDH PWB
9.625in Casing Surface	16.00	800.00	784.00	16.00	800.00	0.00	0.00	0.00	0.00	SHOOK 3-10-2CDH PWB
8.5in Open Hole	800.00	13131.20	12331.20	800.00	7840.00	0.00	0.00	-6881.30	-1704.06	SHOOK 3-10-2CDH PWB
5.5in Casing Production	16.00	13131.20	13115.20	16.00	7840.00	0.00	0.00	-6881.30	-1704.06	SHOOK 3-10-2CDH PWB

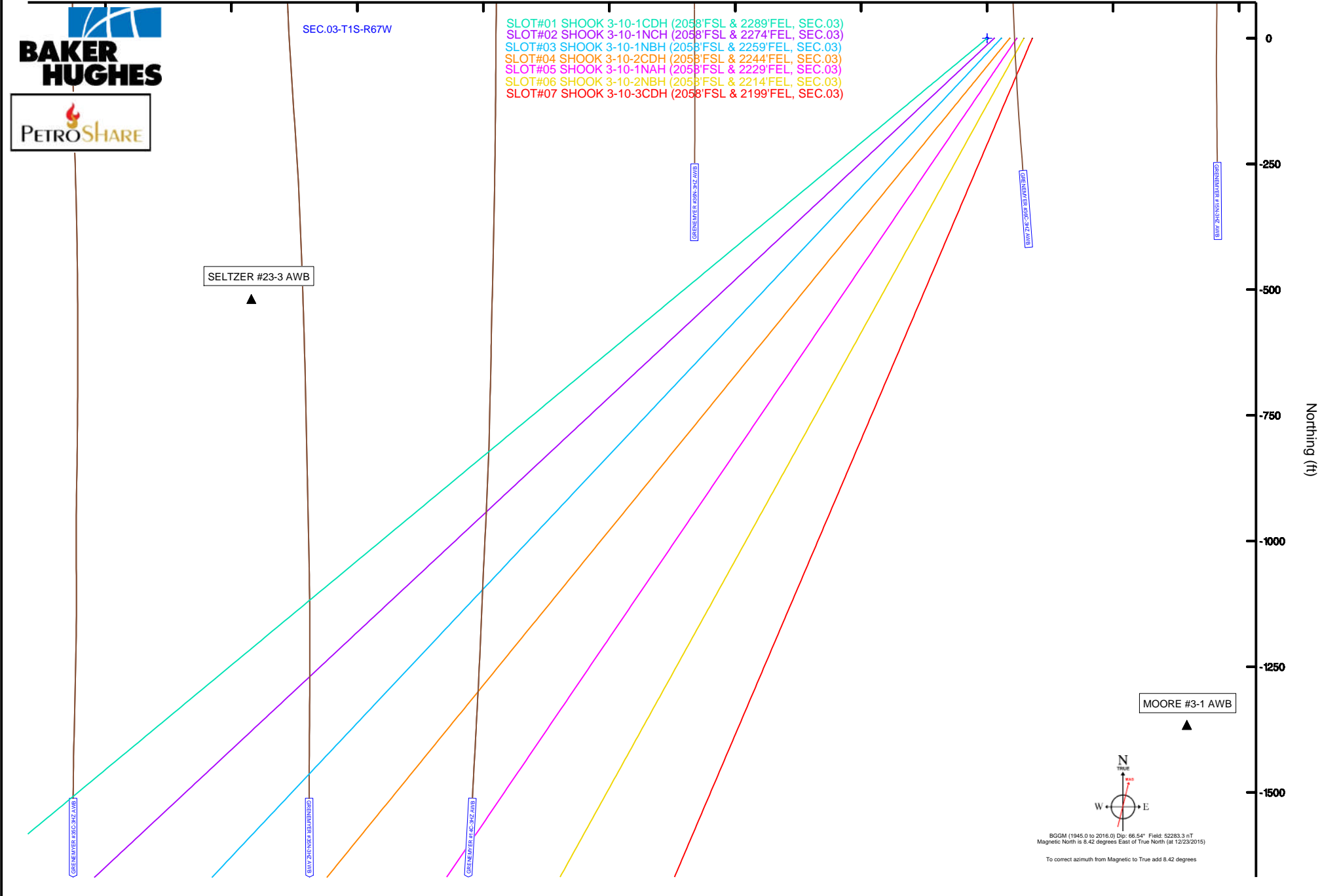


PETROSHARE

Scale 1 inch = 250 -1750 -1500 -1250 -1000 -750

True vertical depths are referenced to RIG (16KB) (RKB)	Grid System: NAD83 / Lambert Colorado SP, Northern Zone (501), US feet
Measured depths are referenced to RIG (16KB) (RKB)	North Reference: True north
RIG (16KB) (RKB) to Mean Sea Level: 5114 feet	Scale: True distance
Mean Sea Level to Mud line (At Slot: SLOT#01 SHOOK 3-10-1CDH (2058FSL & 2289FEL, SEC.03)): 0 feet	Depths are in feet
Coordinates are in feet referenced to Slot	Created by: ingmjannr on 12/29/2015

Lasting (it) -500 -250 0 250 500

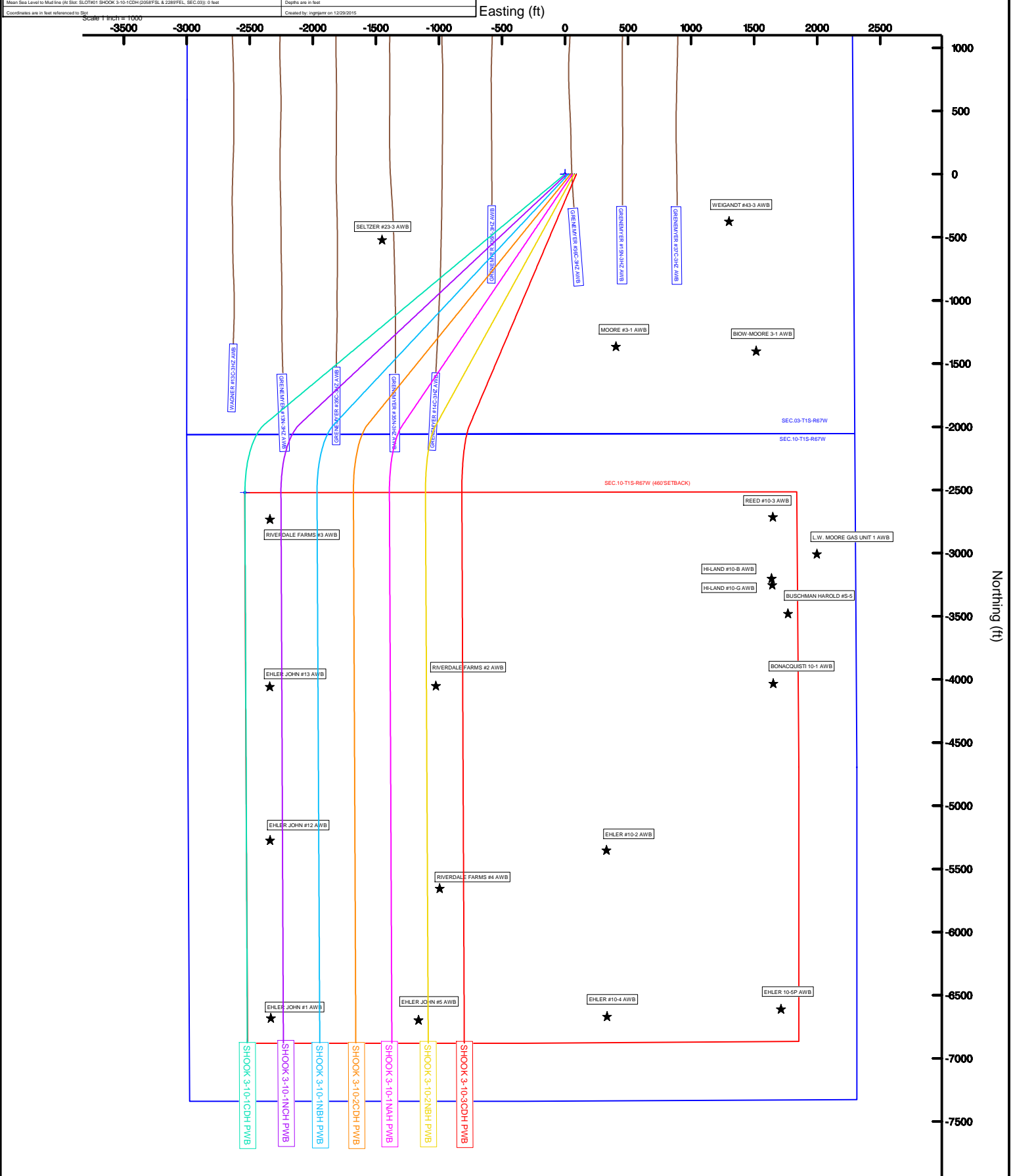


Location:	COLORADO	Slot:	SLOT#01 SHOOK 3-10-1CDH (2058FSL & 2289FEL, SEC.03)
Field:	ADAMS COUNTY (NAD83/ TRUE NORTH)	Well:	SHOOK 3-10-1CDH
Facility:	SEC.03-T1S-R67W	Wellbore:	SHOOK 3-10-1CDH PWB



BGGM (1945.0 to 2016.0) Dip: 66.54° Field: 52283.3 nT
Magnetic North is 8.42 degrees East of True North (at 12/23/2015)

To correct azimuth from Magnetic to True add 8.42 degrees





Planned Wellpath Report

SHOOK 3-10-2CDH PWP (REV-A.0)

Page 1 of 6



REFERENCE WELLPATH IDENTIFICATION

Operator	PETROSHARE	Slot	SLOT#04 SHOOK 3-10-2CDH (2058'FSL & 2244'FEL, SEC.03)
Area	COLORADO	Well	SHOOK 3-10-2CDH
Field	ADAMS COUNTY (NAD83/ TRUE NORTH)	Wellbore	SHOOK 3-10-2CDH PWB
Facility	SEC.03-T1S-R67W		

REPORT SETUP INFORMATION

Projection System	NAD83 / Lambert Colorado SP, Northern Zone (501), US feet	Software System	WellArchitect® 4.1.1
North Reference	True	User	Ingmjmr
Scale	0.999967	Report Generated	12/29/2015 at 8:30:39 AM
Convergence at slot	0.40° East	Database/Source file	WA_DEN_Denver_Defn/SHOOK_3-10-2CDH_PWB.xml

WELLPATH LOCATION

	Local coordinates		Grid coordinates		Geographic coordinates	
	North[ft]	East[ft]	Easting[US ft]	Northing[US ft]	Latitude	Longitude
Slot Location	0.00	44.83	3175523.58	1240632.79	39°59'31.992"N	104°52'24.744"W
Facility Reference Pt			3175478.75	1240632.48	39°59'31.992"N	104°52'25.320"W
Field Reference Pt			3175478.75	1240632.48	39°59'31.992"N	104°52'25.320"W

WELLPATH DATUM

Calculation method	Minimum curvature	RIG (16'KB) (RKB) to Facility Vertical Datum	5114.00ft
Horizontal Reference Pt	Slot	RIG (16'KB) (RKB) to Mean Sea Level	5114.00ft
Vertical Reference Pt	RIG (16'KB) (RKB)	RIG (16'KB) (RKB) to Mud Line at Slot (SLOT#04 SHOOK 3-10-2CDH (2058'FSL & 2244'FEL, SEC.03))	5114.00ft
MD Reference Pt	RIG (16'KB) (RKB)	Section Origin	N 0.00, E 0.00 ft
Field Vertical Reference	Mean Sea Level	Section Azimuth	193.91°



Planned Wellpath Report

SHOOK 3-10-2CDH PWP (REV-A.0)

Page 2 of 6



REFERENCE WELLPATH IDENTIFICATION

Operator	PETROSHARE	Slot	SLOT#04 SHOOK 3-10-2CDH (2058'FSL & 2244'FEL, SEC.03)
Area	COLORADO	Well	SHOOK 3-10-2CDH
Field	ADAMS COUNTY (NAD83/ TRUE NORTH)	Wellbore	SHOOK 3-10-2CDH PWB
Facility	SEC.03-T1S-R67W		

WELLPATH DATA (147 stations) † = interpolated/extrapolated station

MD [ft]	Inclination [°]	Azimuth [°]	TVD [ft]	Vert Sect [ft]	North [ft]	East [ft]	DLS [°/100ft]	Comments
0.00†	0.000	219.081	0.00	0.00	0.00	0.00	0.00	
16.00	0.000	219.081	16.00	0.00	0.00	0.00	0.00	Tie On
116.00†	0.000	219.081	116.00	0.00	0.00	0.00	0.00	
216.00†	0.000	219.081	216.00	0.00	0.00	0.00	0.00	
316.00†	0.000	219.081	316.00	0.00	0.00	0.00	0.00	
416.00†	0.000	219.081	416.00	0.00	0.00	0.00	0.00	
516.00†	0.000	219.081	516.00	0.00	0.00	0.00	0.00	
616.00†	0.000	219.081	616.00	0.00	0.00	0.00	0.00	
716.00†	0.000	219.081	716.00	0.00	0.00	0.00	0.00	
745.00†	0.000	219.081	745.00	0.00	0.00	0.00	0.00	FOX HILLS
816.00†	0.000	219.081	816.00	0.00	0.00	0.00	0.00	
916.00†	0.000	219.081	916.00	0.00	0.00	0.00	0.00	
1016.00†	0.000	219.081	1016.00	0.00	0.00	0.00	0.00	
1116.00†	0.000	219.081	1116.00	0.00	0.00	0.00	0.00	
1216.00†	0.000	219.081	1216.00	0.00	0.00	0.00	0.00	
1316.00†	0.000	219.081	1316.00	0.00	0.00	0.00	0.00	
1416.00†	0.000	219.081	1416.00	0.00	0.00	0.00	0.00	
1516.00†	0.000	219.081	1516.00	0.00	0.00	0.00	0.00	
1616.00†	0.000	219.081	1616.00	0.00	0.00	0.00	0.00	
1716.00†	0.000	219.081	1716.00	0.00	0.00	0.00	0.00	
1800.00	0.000	219.081	1800.00	0.00	0.00	0.00	0.00	End of Tangent
1816.00†	0.320	219.081	1816.00	0.04	-0.03	-0.03	2.00	
1916.00†	2.320	219.081	1915.97	2.13	-1.82	-1.48	2.00	
2016.00†	4.320	219.081	2015.80	7.37	-6.32	-5.13	2.00	
2116.00†	6.320	219.081	2115.36	15.76	-13.52	-10.98	2.00	
2216.00†	8.320	219.081	2214.54	27.29	-23.40	-19.01	2.00	
2316.00†	10.320	219.081	2313.21	41.94	-35.98	-29.22	2.00	
2416.00†	12.320	219.081	2411.26	59.71	-51.21	-41.59	2.00	
2516.00†	14.320	219.081	2508.57	80.56	-69.10	-56.11	2.00	
2616.00†	16.320	219.081	2605.01	104.47	-89.60	-72.77	2.00	
2716.00†	18.320	219.081	2700.47	131.41	-112.71	-91.54	2.00	
2816.00†	20.320	219.081	2794.84	161.35	-138.39	-112.39	2.00	
2916.00†	22.320	219.081	2887.99	194.26	-166.61	-135.31	2.00	
3016.00†	24.320	219.081	2979.81	230.08	-197.34	-160.27	2.00	
3116.00†	26.320	219.081	3070.20	268.78	-230.54	-187.22	2.00	
3154.52	27.090	219.081	3104.61	284.45	-243.98	-198.14	2.00	End of Build
3216.00†	27.090	219.081	3159.35	309.79	-265.71	-215.79	0.00	
3316.00†	27.090	219.081	3248.38	351.01	-301.06	-244.50	0.00	
3416.00†	27.090	219.081	3337.41	392.22	-336.41	-273.21	0.00	
3516.00†	27.090	219.081	3426.43	433.44	-371.76	-301.91	0.00	
3616.00†	27.090	219.081	3515.46	474.65	-407.11	-330.62	0.00	
3716.00†	27.090	219.081	3604.49	515.86	-442.46	-359.33	0.00	
3816.00†	27.090	219.081	3693.52	557.08	-477.81	-388.04	0.00	
3916.00†	27.090	219.081	3782.55	598.29	-513.16	-416.75	0.00	
4016.00†	27.090	219.081	3871.58	639.51	-548.51	-445.46	0.00	



Planned Wellpath Report

SHOOK 3-10-2CDH PWP (REV-A.0)

Page 3 of 6



REFERENCE WELLPATH IDENTIFICATION

Operator	PETROSHARE	Slot	SLOT#04 SHOOK 3-10-2CDH (2058'FSL & 2244'FEL, SEC.03)
Area	COLORADO	Well	SHOOK 3-10-2CDH
Field	ADAMS COUNTY (NAD83/ TRUE NORTH)	Wellbore	SHOOK 3-10-2CDH PWB
Facility	SEC.03-T1S-R67W		

WELLPATH DATA (147 stations) † = interpolated/extrapolated station

MD [ft]	Inclination [°]	Azimuth [°]	TVD [ft]	Vert Sect [ft]	North [ft]	East [ft]	DLS [°/100ft]	Comments
4116.00†	27.090	219.081	3960.61	680.72	-583.87	-474.17	0.00	
4216.00†	27.090	219.081	4049.64	721.94	-619.22	-502.87	0.00	
4316.00†	27.090	219.081	4138.67	763.15	-654.57	-531.58	0.00	
4416.00†	27.090	219.081	4227.70	804.37	-689.92	-560.29	0.00	
4516.00†	27.090	219.081	4316.72	845.58	-725.27	-589.00	0.00	
4616.00†	27.090	219.081	4405.75	886.80	-760.62	-617.71	0.00	
4716.00†	27.090	219.081	4494.78	928.01	-795.97	-646.42	0.00	
4816.00†	27.090	219.081	4583.81	969.23	-831.32	-675.13	0.00	
4916.00†	27.090	219.081	4672.84	1010.44	-866.67	-703.84	0.00	
5016.00†	27.090	219.081	4761.87	1051.66	-902.02	-732.54	0.00	
5116.00†	27.090	219.081	4850.90	1092.87	-937.37	-761.25	0.00	
5176.77†	27.090	219.081	4905.00	1117.92	-958.85	-778.70	0.00	SUSSEX/ SHANNON
5216.00†	27.090	219.081	4939.93	1134.09	-972.72	-789.96	0.00	
5316.00†	27.090	219.081	5028.96	1175.30	-1008.07	-818.67	0.00	
5416.00†	27.090	219.081	5117.98	1216.52	-1043.42	-847.38	0.00	
5516.00†	27.090	219.081	5207.01	1257.73	-1078.77	-876.09	0.00	
5616.00†	27.090	219.081	5296.04	1298.95	-1114.12	-904.80	0.00	
5716.00†	27.090	219.081	5385.07	1340.16	-1149.47	-933.51	0.00	
5816.00†	27.090	219.081	5474.10	1381.38	-1184.82	-962.21	0.00	
5916.00†	27.090	219.081	5563.13	1422.59	-1220.17	-990.92	0.00	
6016.00†	27.090	219.081	5652.16	1463.81	-1255.52	-1019.63	0.00	
6116.00†	27.090	219.081	5741.19	1505.02	-1290.88	-1048.34	0.00	
6216.00†	27.090	219.081	5830.22	1546.24	-1326.23	-1077.05	0.00	
6316.00†	27.090	219.081	5919.24	1587.45	-1361.58	-1105.76	0.00	
6416.00†	27.090	219.081	6008.27	1628.67	-1396.93	-1134.47	0.00	
6516.00†	27.090	219.081	6097.30	1669.88	-1432.28	-1163.17	0.00	
6616.00†	27.090	219.081	6186.33	1711.10	-1467.63	-1191.88	0.00	
6716.00†	27.090	219.081	6275.36	1752.31	-1502.98	-1220.59	0.00	
6816.00†	27.090	219.081	6364.39	1793.53	-1538.33	-1249.30	0.00	
6916.00†	27.090	219.081	6453.42	1834.74	-1573.68	-1278.01	0.00	
7016.00†	27.090	219.081	6542.45	1875.96	-1609.03	-1306.72	0.00	
7116.00†	27.090	219.081	6631.48	1917.17	-1644.38	-1335.43	0.00	
7216.00†	27.090	219.081	6720.51	1958.39	-1679.73	-1364.14	0.00	
7316.00†	27.090	219.081	6809.53	1999.60	-1715.08	-1392.84	0.00	
7416.00†	27.090	219.081	6898.56	2040.82	-1750.43	-1421.55	0.00	
7516.00†	27.090	219.081	6987.59	2082.03	-1785.78	-1450.26	0.00	
7616.00†	27.090	219.081	7076.62	2123.25	-1821.13	-1478.97	0.00	
7716.00†	27.090	219.081	7165.65	2164.46	-1856.48	-1507.68	0.00	
7816.00†	27.090	219.081	7254.68	2205.68	-1891.83	-1536.39	0.00	
7916.00†	27.090	219.081	7343.71	2246.89	-1927.18	-1565.10	0.00	
7970.24†	27.090	219.081	7392.00	2269.25	-1946.36	-1580.67	0.00	NIOBRARA A CHALK
8006.19†	27.090	219.081	7424.00	2284.06	-1959.07	-1590.99	0.00	NIOBRARA A MARL
8016.00†	27.090	219.081	7432.74	2288.11	-1962.53	-1593.81	0.00	
8076.89	27.090	219.081	7486.95	2313.20	-1984.06	-1611.29	0.00	End of Tangent
8116.00†	30.076	213.792	7521.29	2330.48	-1999.12	-1622.35	10.00	



Planned Wellpath Report

SHOOK 3-10-2CDH PWP (REV-A.0)

Page 4 of 6



REFERENCE WELLPATH IDENTIFICATION

Operator	PETROSHARE	Slot	SLOT#04 SHOOK 3-10-2CDH (2058'FSL & 2244'FEL, SEC.03)
Area	COLORADO	Well	SHOOK 3-10-2CDH
Field	ADAMS COUNTY (NAD83/ TRUE NORTH)	Wellbore	SHOOK 3-10-2CDH PWB
Facility	SEC.03-T1S-R67W		

WELLPATH DATA (147 stations) † = interpolated/extrapolated station

MD [ft]	Inclination [°]	Azimuth [°]	TVD [ft]	Vert Sect [ft]	North [ft]	East [ft]	DLS [°/100ft]	Comments
8160.40†	33.676	208.863	7559.00	2352.85	-2019.16	-1634.49	10.00	NIOBRARA B CHALK
8190.91†	36.246	205.993	7584.00	2369.84	-2034.68	-1642.53	10.00	NIOBRARA B MARL
8216.00†	38.406	203.886	7603.95	2384.78	-2048.47	-1648.94	10.00	
8308.35†	46.613	197.592	7672.00	2446.65	-2106.81	-1670.74	10.00	NIOBRARA C CHALK
8316.00†	47.306	197.151	7677.22	2452.23	-2112.15	-1672.41	10.00	
8345.95†	50.037	195.511	7697.00	2474.70	-2133.73	-1678.73	10.00	NIOBRARA C MARL
8416.00†	56.501	192.138	7738.88	2530.79	-2188.22	-1692.06	10.00	
8516.00†	65.858	188.102	7787.05	2618.08	-2274.38	-1707.30	10.00	
8589.55†	72.801	185.506	7813.00	2686.32	-2342.66	-1715.41	10.00	FORT HAYS
8616.00†	75.306	184.623	7820.27	2711.44	-2367.99	-1717.65	10.00	
8716.00†	84.802	181.436	7837.52	2808.04	-2466.23	-1722.81	10.00	
8770.65	90.000	179.746	7840.00†	2861.15	-2520.80	-1723.38	10.00	End of 3D Arc
8816.00†	90.000	179.746	7840.00	2905.12	-2566.15	-1723.18	0.00	
8916.00†	90.000	179.746	7840.00	3002.08	-2666.15	-1722.73	0.00	
9016.00†	90.000	179.746	7840.00	3099.04	-2766.15	-1722.29	0.00	
9116.00†	90.000	179.746	7840.00	3196.00	-2866.14	-1721.85	0.00	
9216.00†	90.000	179.746	7840.00	3292.96	-2966.14	-1721.40	0.00	
9316.00†	90.000	179.746	7840.00	3389.92	-3066.14	-1720.96	0.00	
9416.00†	90.000	179.746	7840.00	3486.88	-3166.14	-1720.52	0.00	
9516.00†	90.000	179.746	7840.00	3583.84	-3266.14	-1720.07	0.00	
9616.00†	90.000	179.746	7840.00	3680.80	-3366.14	-1719.63	0.00	
9716.00†	90.000	179.746	7840.00	3777.76	-3466.14	-1719.19	0.00	
9816.00†	90.000	179.746	7840.00	3874.72	-3566.14	-1718.75	0.00	
9916.00†	90.000	179.746	7840.00	3971.68	-3666.14	-1718.30	0.00	
10016.00†	90.000	179.746	7840.00	4068.64	-3766.14	-1717.86	0.00	
10116.00†	90.000	179.746	7840.00	4165.60	-3866.13	-1717.42	0.00	
10216.00†	90.000	179.746	7840.00	4262.56	-3966.13	-1716.97	0.00	
10316.00†	90.000	179.746	7840.00	4359.53	-4066.13	-1716.53	0.00	
10416.00†	90.000	179.746	7840.00	4456.49	-4166.13	-1716.09	0.00	
10516.00†	90.000	179.746	7840.00	4553.45	-4266.13	-1715.64	0.00	
10616.00†	90.000	179.746	7840.00	4650.41	-4366.13	-1715.20	0.00	
10716.00†	90.000	179.746	7840.00	4747.37	-4466.13	-1714.76	0.00	
10816.00†	90.000	179.746	7840.00	4844.33	-4566.13	-1714.32	0.00	
10916.00†	90.000	179.746	7840.00	4941.29	-4666.13	-1713.87	0.00	
11016.00†	90.000	179.746	7840.00	5038.25	-4766.13	-1713.43	0.00	
11116.00†	90.000	179.746	7840.00	5135.21	-4866.12	-1712.99	0.00	
11216.00†	90.000	179.746	7840.00	5232.17	-4966.12	-1712.54	0.00	
11316.00†	90.000	179.746	7840.00	5329.13	-5066.12	-1712.10	0.00	
11416.00†	90.000	179.746	7840.00	5426.09	-5166.12	-1711.66	0.00	
11516.00†	90.000	179.746	7840.00	5523.05	-5266.12	-1711.21	0.00	
11616.00†	90.000	179.746	7840.00	5620.01	-5366.12	-1710.77	0.00	
11716.00†	90.000	179.746	7840.00	5716.97	-5466.12	-1710.33	0.00	
11816.00†	90.000	179.746	7840.00	5813.93	-5566.12	-1709.89	0.00	
11916.00†	90.000	179.746	7840.00	5910.89	-5666.12	-1709.44	0.00	
12016.00†	90.000	179.746	7840.00	6007.85	-5766.12	-1709.00	0.00	



Planned Wellpath Report

SHOOK 3-10-2CDH PWP (REV-A.0)

Page 5 of 6



REFERENCE WELLPATH IDENTIFICATION

Operator	PETROSHARE	Slot	SLOT#04 SHOOK 3-10-2CDH (2058'FSL & 2244'FEL, SEC.03)
Area	COLORADO	Well	SHOOK 3-10-2CDH
Field	ADAMS COUNTY (NAD83/ TRUE NORTH)	Wellbore	SHOOK 3-10-2CDH PWB
Facility	SEC.03-T1S-R67W		

WELLPATH DATA (147 stations) † = interpolated/extrapolated station

MD [ft]	Inclination [°]	Azimuth [°]	TVD [ft]	Vert Sect [ft]	North [ft]	East [ft]	DLS [°/100ft]	Comments
12116.00†	90.000	179.746	7840.00	6104.82	-5866.11	-1708.56	0.00	
12216.00†	90.000	179.746	7840.00	6201.78	-5966.11	-1708.11	0.00	
12316.00†	90.000	179.746	7840.00	6298.74	-6066.11	-1707.67	0.00	
12416.00†	90.000	179.746	7840.00	6395.70	-6166.11	-1707.23	0.00	
12516.00†	90.000	179.746	7840.00	6492.66	-6266.11	-1706.78	0.00	
12616.00†	90.000	179.746	7840.00	6589.62	-6366.11	-1706.34	0.00	
12716.00†	90.000	179.746	7840.00	6686.58	-6466.11	-1705.90	0.00	
12816.00†	90.000	179.746	7840.00	6783.54	-6566.11	-1705.46	0.00	
12916.00†	90.000	179.746	7840.00	6880.50	-6666.11	-1705.01	0.00	
13016.00†	90.000	179.746	7840.00	6977.46	-6766.11	-1704.57	0.00	
13116.00†	90.000	179.746	7840.00	7074.42	-6866.11	-1704.13	0.00	
13131.20	90.000	179.746	7840.00 ²	7089.16	-6881.30	-1704.06	0.00	End of Tangent; CODELL

HOLE & CASING SECTIONS - Ref Wellbore: SHOOK 3-10-2CDH PWB Ref Wellpath: SHOOK 3-10-2CDH PWP (REV-A.0)

String/Diameter	Start MD [ft]	End MD [ft]	Interval [ft]	Start TVD [ft]	End TVD [ft]	Start N/S [ft]	Start E/W [ft]	End N/S [ft]	End E/W [ft]
13.5in Open Hole	16.00	800.00	784.00	16.00	800.00	0.00	0.00	0.00	0.00
9.625in Casing Surface	16.00	800.00	784.00	16.00	800.00	0.00	0.00	0.00	0.00
8.5in Open Hole	800.00	13131.20	12331.20	800.00	7840.00	0.00	0.00	-6881.30	-1704.06
5.5in Casing Production	16.00	13131.20	13115.20	16.00	7840.00	0.00	0.00	-6881.30	-1704.06

TARGETS

Name	MD [ft]	TVD [ft]	North [ft]	East [ft]	Grid East [US ft]	Grid North [US ft]	Latitude	Longitude	Shape
SEC.03-T1S-R67W		0.00	0.00	-44.83	3175478.75	1240632.48	39°59'31.992"N	104°52'25.320"W	polygon
SEC.10-T1S-R67W		0.00	0.00	-44.83	3175478.75	1240632.48	39°59'31.992"N	104°52'25.320"W	polygon
2) SHOOK 3-10-2CDH BHL ON PLAT (460'FSL & 1321'FWL, SEC.10)	13131.20	7840.00	-6881.30	-1704.06	3173868.23	1233739.86	39°58'23.988"N	104°52'46.632"W	point
1) SHOOK 3-10-2CDH LP ON PLAT (460'FNL & 1321'FWL, SEC.10)	8770.65	7840.00	-2520.80	-1723.38	3173818.11	1238099.97	39°59'07.080"N	104°52'46.884"W	point
SEC.10-T1S-R67W (460'SETBACK)		7841.00	0.00	-44.83	3175478.75	1240632.48	39°59'31.992"N	104°52'25.320"W	polygon

SURVEY PROGRAM - Ref Wellbore: SHOOK 3-10-2CDH PWB Ref Wellpath: SHOOK 3-10-2CDH PWP (REV-A.0)

Start MD [ft]	End MD [ft]	Positional Uncertainty Model	Log Name/Comment	Wellbore
16.00	13131.20	Custom NaviTrak (Standard) (Rockies 0.03Gt model)		SHOOK 3-10-2CDH PWB



Planned Wellpath Report

SHOOK 3-10-2CDH PWP (REV-A.0)

Page 6 of 6



REFERENCE WELLPATH IDENTIFICATION

Operator	PETROSHARE	Slot	SLOT#04 SHOOK 3-10-2CDH (2058'FSL & 2244'FEL, SEC.03)
Area	COLORADO	Well	SHOOK 3-10-2CDH
Field	ADAMS COUNTY (NAD83/ TRUE NORTH)	Wellbore	SHOOK 3-10-2CDH PWB
Facility	SEC.03-T1S-R67W		

WELLPATH COMMENTS

MD [ft]	Inclination [°]	Azimuth [°]	TVD [ft]	Comment
745.00	0.000	219.081	745.00	FOX HILLS
5176.77	27.090	219.081	4905.00	SUSSEX/ SHANNON
7970.24	27.090	219.081	7392.00	NIOBRARA A CHALK
8006.19	27.090	219.081	7424.00	NIOBRARA A MARL
8160.40	33.676	208.863	7559.00	NIOBRARA B CHALK
8190.91	36.246	205.993	7584.00	NIOBRARA B MARL
8308.35	46.613	197.592	7672.00	NIOBRARA C CHALK
8345.95	50.037	195.511	7697.00	NIOBRARA C MARL
8589.55	72.801	185.506	7813.00	FORT HAYS
13131.20	90.000	179.746	7840.00	CODELL

DESIGN COMMENTS

MD [ft]	Inclination [°]	Azimuth [°]	TVD [ft]	Comment
16.00	0.000	219.081	16.00	Tie On
1800.00	0.000	219.081	1800.00	End of Tangent
3154.52	27.090	219.081	3104.61	End of Build
8076.89	27.090	219.081	7486.95	End of Tangent
8770.65	90.000	179.746	7840.00	End of 3D Arc
13131.20	90.000	179.746	7840.00	End of Tangent