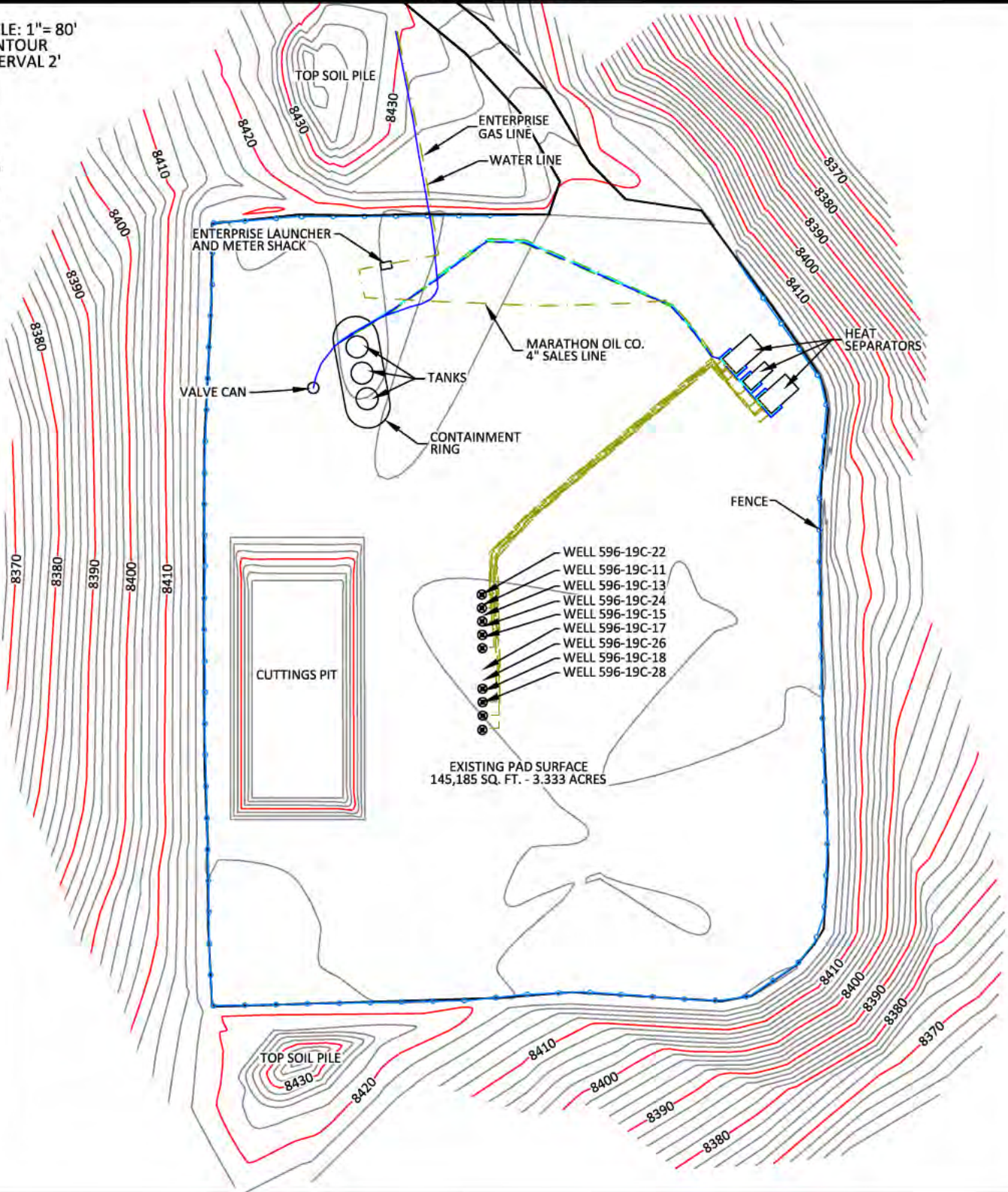


PAD 596-19C

SCALE: 1"= 80'
CONTOUR
INTERVAL 2'



CONFIDENTIALITY NOTES:

The information contained in this plat is legally privileged and confidential information intended only for the use of the recipients. If you are not the intended recipients, you are hereby notified that any use, dissemination, distribution or copying of this information is strictly prohibited.



**WILLIAM H. SMITH
& ASSOCIATES P.C.**

SURVEYING CONSULTANTS
550 EAST SECOND NORTH PHONE: 307-875-3638
GREEN RIVER, WY 307-875-3639
www.wsmithpc.com

DRAWN BY: JSJ

CHECKED BY: WHD

JOB NO: 26099

PROJECT NO: N/A

REVISIONS:

LEGEND

- GAS LINES
- WATER LINES
- CONDENSATE LINES
- GLYCOL LINES
- ELECTRIC LINES

LOCATION:

596-19C
WITHIN THE SW/4
SECTION 19,
T 5 S, R 96 W,
6TH PM.
GARFIELD COUNTY,
COLORADO

MARATHON OIL COMPANY
PO BOX 3128, HOUSTON TX, 77253
5555 SAN FELIPE, HOUSTON TX, 77056

AS-BUILT PAD

SCALE: 1"=80'

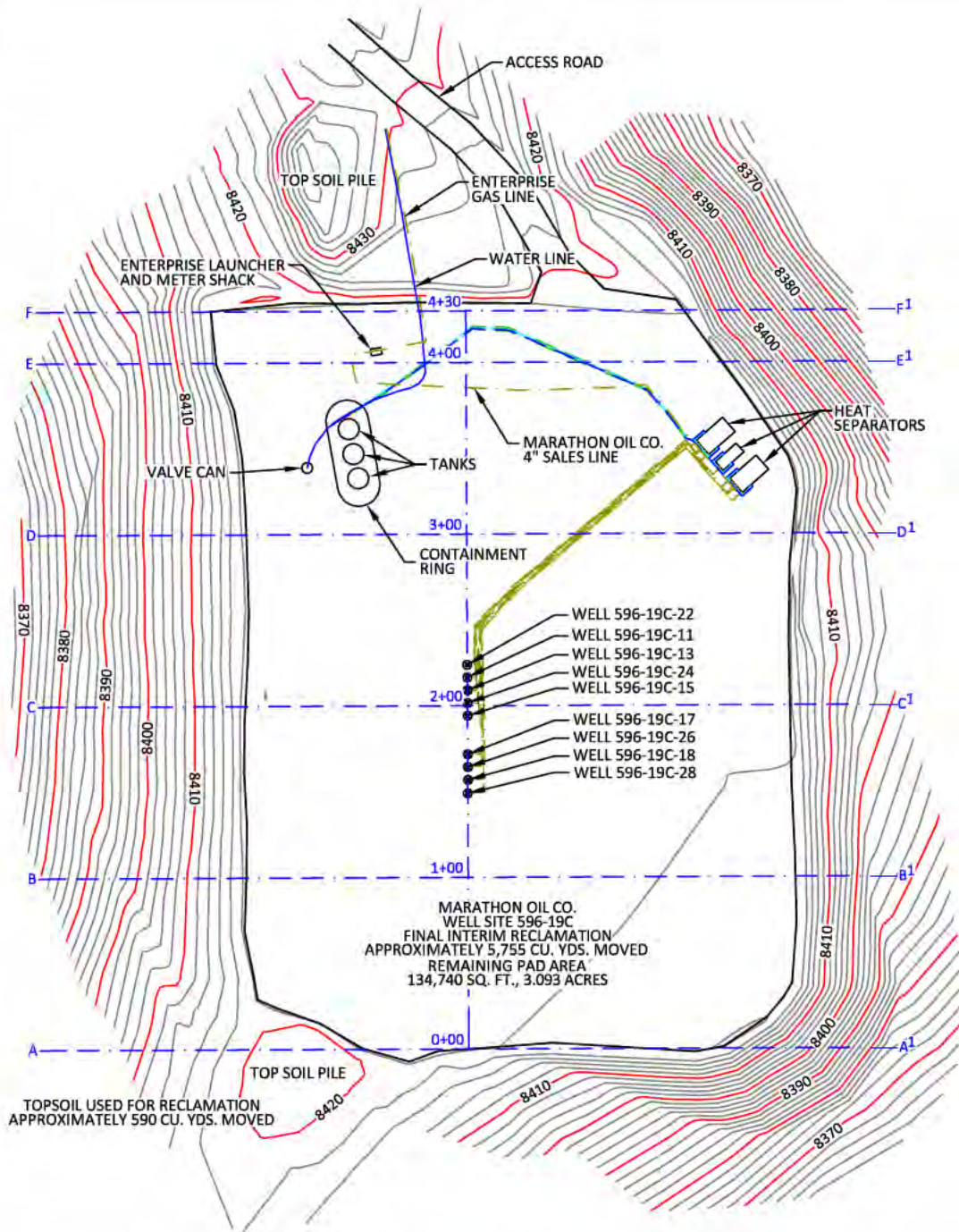
DATE: 09/12/2011

EXHIBIT "A"

SHEET 1 OF 3

PAD 596-19C

SCALE: 1"= 100'
CONTOUR
INTERVAL 2'



CONFIDENTIALITY NOTES:

The information contained in this plat is legally privileged and confidential information intended only for the use of the recipients. If you are not the intended recipients, you are hereby notified that any use, dissemination, distribution or copying of this information is strictly prohibited.



**WILLIAM H. SMITH
& ASSOCIATES P.C.**
SURVEYING CONSULTANTS

250 EAST SECOND NORTH PHONE: 307-875-3638
GREEN RIVER, WY 307-875-3639
www.whsmithpc.com

DRAWN BY: JSJ

CHECKED BY: WHD

JOB NO: 26099

PROJECT NO: N/A

REVISIONS:

DATA

FINAL INTERIM RECLAMATION
APPROXIMATELY 5,755 CU. YDS. MOVED

TOPSOIL USED FOR RECLAMATION
APPROXIMATELY 590 CU. YDS. MOVED

REMAINING PAD AREA
134,740 SQ. FT. - 3.093 ACRES

LOCATION:

596-19C
WITHIN THE SW/4
SECTION 19,
T 5 S, R 96 W,
6TH PM.
GARFIELD COUNTY,
COLORADO

MARATHON OIL COMPANY
PO BOX 3128, HOUSTON TX, 77253
5555 SAN FELIPE, HOUSTON TX, 77056

INTERIM RECLAMATION ASBUILT

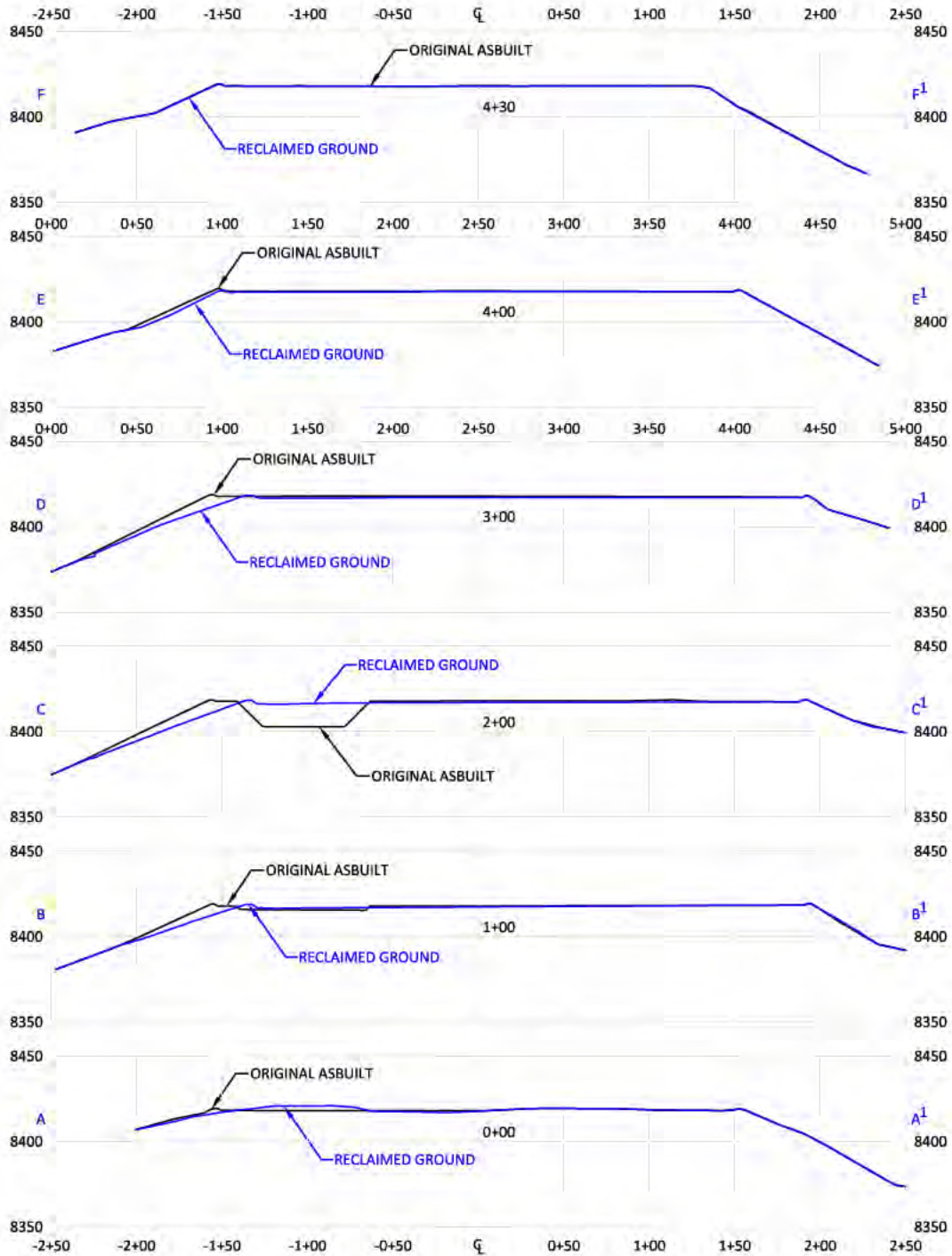
SCALE: 1"=100'

DATE: 09/12/2011

EXHIBIT "B"

SHEET 2 OF 3

PAD 596-19C



CONFIDENTIALITY NOTES:

THE INFORMATION CONTAINED IN THIS PLOT IS LEGALLY PRIVILEGED AND CONFIDENTIAL INFORMATION INTENDED ONLY FOR THE USE OF THE RECIPIENTS. IF YOU ARE NOT THE INTENDED RECIPIENTS, YOU ARE HEREBY NOTIFIED THAT ANY USE, DISSEMINATION, DISTRIBUTION OR COPYING OF THIS INFORMATION IS STRICTLY PROHIBITED.



**WILLIAM H. SMITH
& ASSOCIATES P.C.**

SURVEYING CONSULTANTS
350 EAST SECOND NORTH PHONE: 307-875-3638
GREEN RIVER, WY 307-875-3639
www.whsmithpac.com

DRAWN BY: JSJ
JOB NO: 26099
REVISIONS:

CHECKED BY: WHD
PROJECT NO: N/A

LEGEND

— ORIGINAL ASBUILT
— RECLAIMED GROUND

LOCATION:
596-19C
WITHIN THE SW/4
SECTION 19,
T 5 S, R 96 W,
6TH PM.
GARFIELD COUNTY,
COLORADO

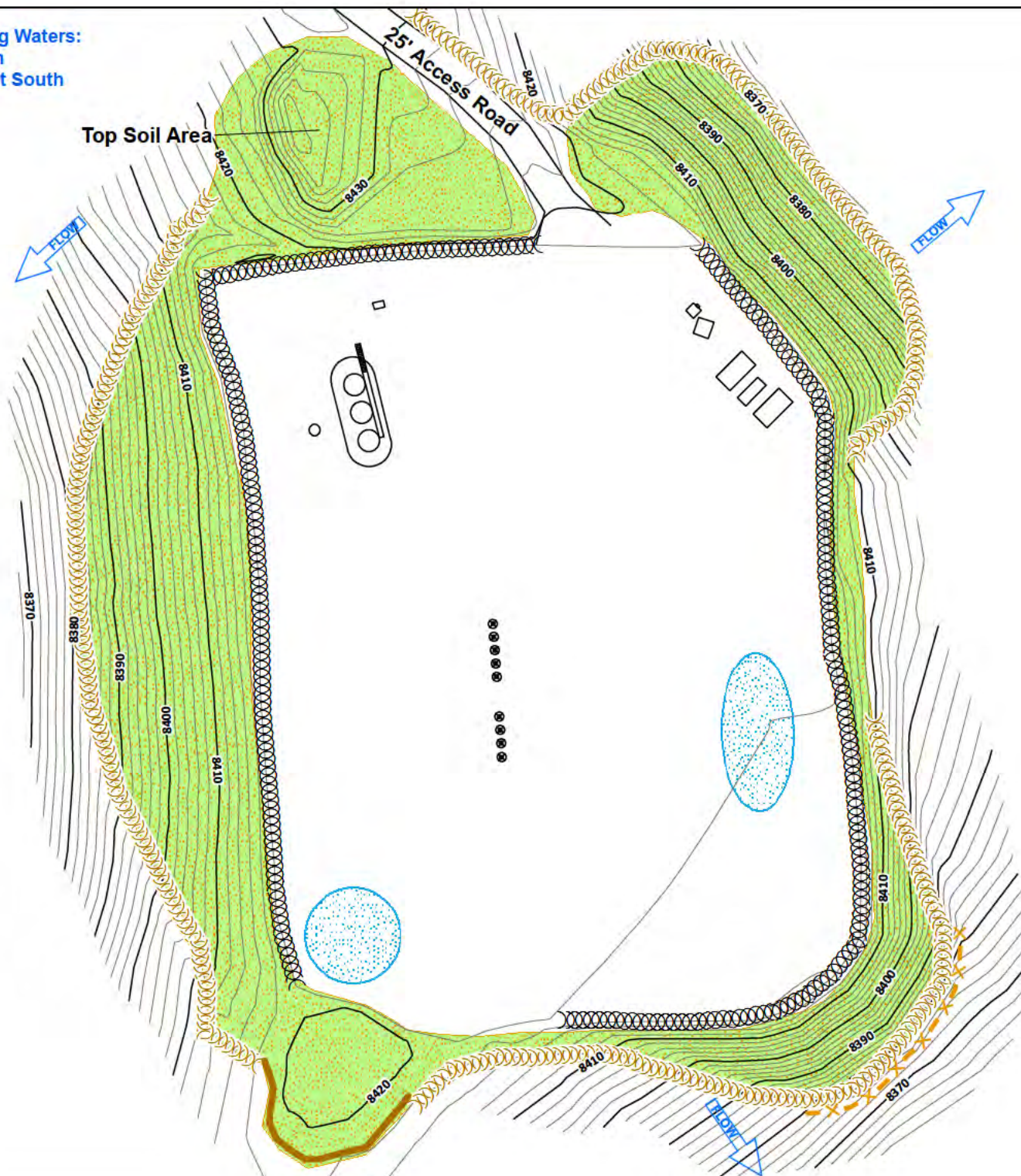
MARATHON OIL COMPANY

P.O. BOX 3128
HOUSTON, TX 77253
5555 SAN FELIPE
HOUSTON, TX 77056

**INTERIM RECLAMATION ASBUILT
CROSS SECTIONS**

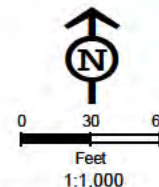
SCALE: 1"=100'H/100'V
DATE: 09/12/2011
EXHIBIT "C"
SHEET 3 OF 3

Receiving Waters:
Bear Run
2200 Feet South



Legend

- Culvert
- Sediment Trap
- Cattle Pond
- Water Bar
- Rip Rap
- Bales
- V-Ditch W/Check Dam
- Diversion Ditch
- Site Berm
- Toe Berm
- Fiber Roll
- Silt Fence
- Area To Be Reclaimed
- Fence
- Blanket
- Cut
- Fill
- Seeded & Hydromulched
- Soil Roughening
- Snow Storage
- Rip Rap (Large Area)



Not Present
Asphalt Or Concrete Batch Plants

Project Location



Garfield County

Map Index Overview



**Pad Site
596-19C**

Total Disturbed Area = 3.09 Acres

MARATHON OIL

REVISED	BY:	COMMENT:
3/28/2012	BJB	TEMPLATE CREATION
3/28/2012	BJB	MAP CREATION
8/27/2012	BJB	BMP REVISION
11/12/2013	BJB	BMP REVISION



InterTech E&E, LLC
tbergstrom@intertech.com
M:\Projects\Marathon\Posa\Projects\SWMP\2013\596_19C\SWMP_596_19C_20131112.mxd

Receiving Waters:
Bear Run
3650 Feet South

Existing Road

FLOW

FLOW

20' Access Road

FLOW

FLOW

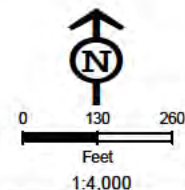
FLOW

FLOW

Pad 596-19C

Legend

- Culvert
- Sediment Trap
- Cattle Pond
- Water Bar
- Rip Rap
- Bales
- V-Ditch W/Check Dam
- Diversion Ditch
- Site Berm
- Toe Berm
- Fiber Roll
- Silt Fence
- Area To Be Reclaimed
- Fence
- Blanket
- Cut
- Fill
- Seeded & Hydromulched
- Soil Roughening
- Snow Storage



Not Present
Asphalt Or Concrete Batch Plants

Project Location



Garfield County

Map Index Overview



Access Road To Pad 596-19C

Approximate Road Length = 2,640 LF

MARATHON OIL

REVISED	BY:	COMMENT:
3/28/2012	BJB	TEMPLATE CREATION
3/28/2012	BJB	MAP CREATION
11/28/2012	BJB	BMP REVISION



InterTech E&E, LLC
tbergstrom@cbmainc.com
M:\Projects\Marathon\Peace\Projects\SWMP\2012\596_19C\SWMP_596_19C_Road_20121128.mxd

*Detailed pad BMP's, contours, dimensions, etc.
are maintained on the individual pad diagram.