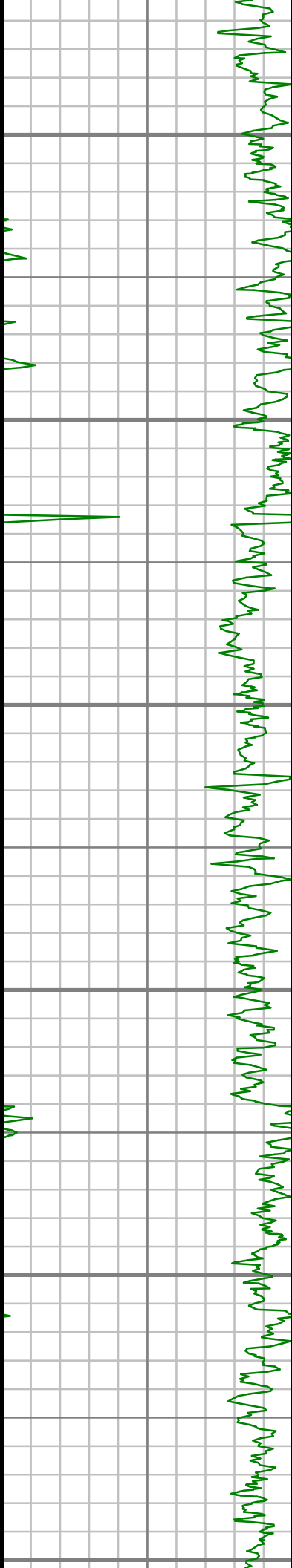




[illegible]

All interpretations are opinions based on inferences from electrical or other measurements and we cannot, and do not guarantee the accuracy or correctness of any interpretations, and we shall not, except in the case of gross or willful negligence on our part, be liable or responsible for any loss, costs, damages or expenses incurred or sustained by anyone resulting from any interpretation made by any of our officers, agents or employees. These interpretations are also subject to our general terms and conditions as set out in our current price schedule.

EXTRACTION OIL & GAS JOHNSON TRUST 8 WATTENBERG FIELD WELD COUNTY, COLORADO API # 05-123-42315-00			
Gamma Ray (GR) 0 Unit = aapi 150	MEASURED DEPTH 1:600 (ft)	Rate of Penetration (ROP) 0 Unit = ft/hr 1000	Tool Temperature (T-TEMP) 0 Unit = °F 300
			S: 53 MD: 5074.00 ft Inc: 16.25 deg Az: 14.31 deg TVD: 5000.31 ft



5200

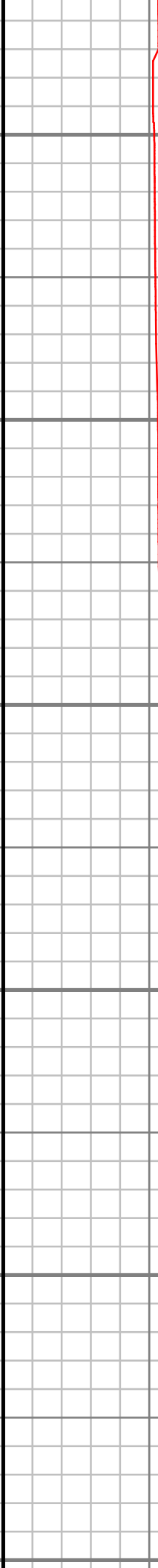
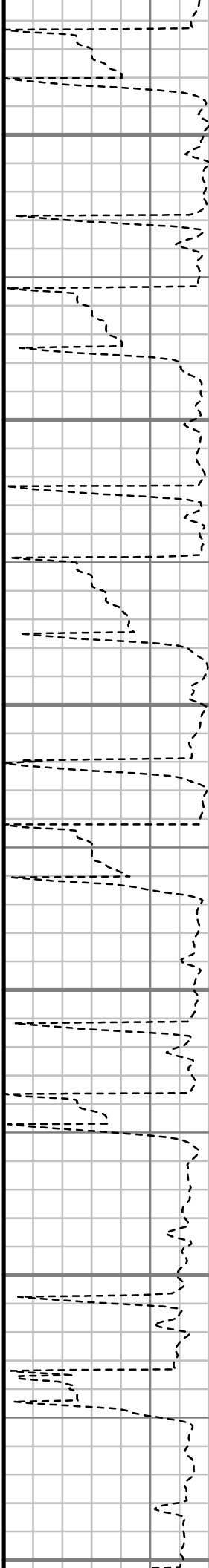
5300

5400

5500

5600

5700



S: 54 MD: 5168.00 ft  
Inc: 14.38 deg Az:  
13.55 deg TVD:  
5090.97 ft

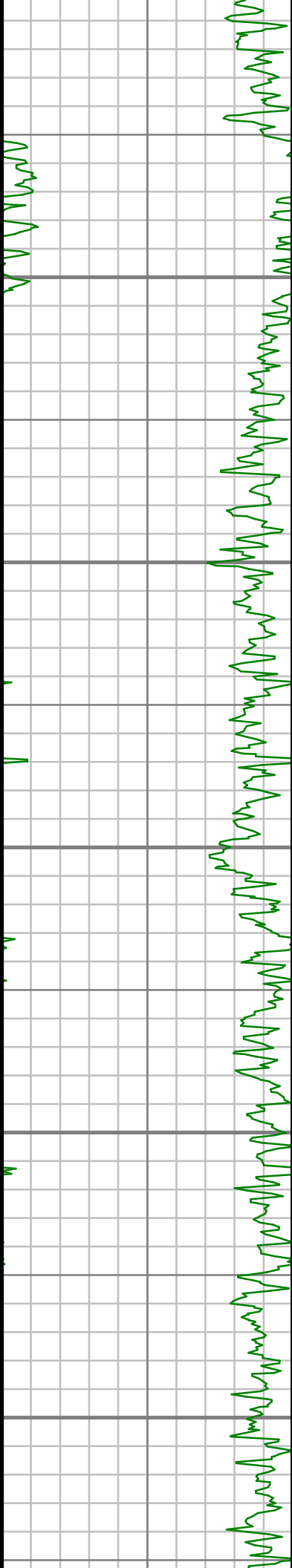
S: 55 MD: 5263.00 ft  
Inc: 13.54 deg Az:  
11.31 deg TVD:  
5183.16 ft

S: 56 MD: 5357.00 ft  
Inc: 12.70 deg Az:  
13.08 deg TVD:  
5274.71 ft

S: 57 MD: 5451.00 ft  
Inc: 12.42 deg Az:  
20.58 deg TVD:  
5366.46 ft

S: 58 MD: 5546.00 ft  
Inc: 10.79 deg Az:  
21.50 deg TVD:  
5459.52 ft

S: 59 MD: 5641.00 ft  
Inc: 9.93 deg Az: 17.65  
deg TVD: 5552.97 ft



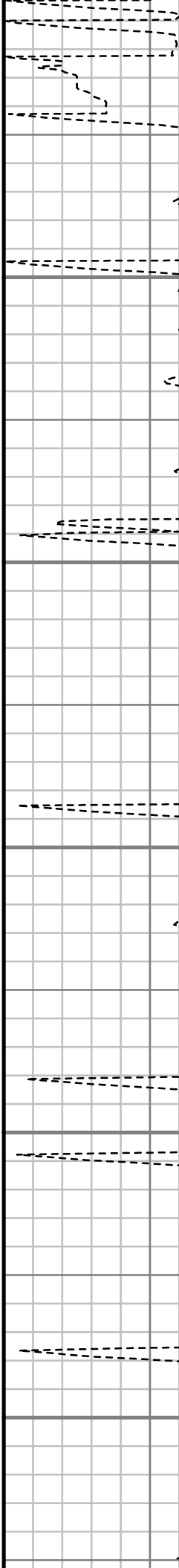
5800

5900

6000

6100

6200



S: 60 MD: 5736.00 ft  
Inc: 9.29 deg Az: 21.08  
deg TVD: 5646.64 ft

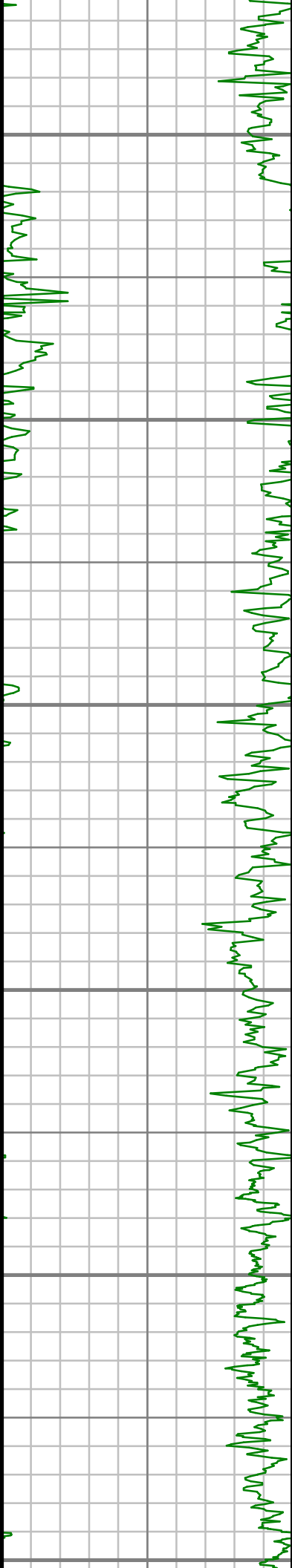
S: 61 MD: 5831.00 ft  
Inc: 7.82 deg Az: 23.69  
deg TVD: 5740.58 ft

S: 62 MD: 5926.00 ft  
Inc: 5.46 deg Az: 27.15  
deg TVD: 5834.93 ft

S: 63 MD: 6020.00 ft  
Inc: 3.89 deg Az: 32.07  
deg TVD: 5928.62 ft

S: 64 MD: 6115.00 ft  
Inc: 2.83 deg Az: 30.15  
deg TVD: 6023.45 ft

S: 65 MD: 6210.00 ft  
Inc: 1.83 deg Az: 28.11  
deg TVD: 6118.37 ft



6300

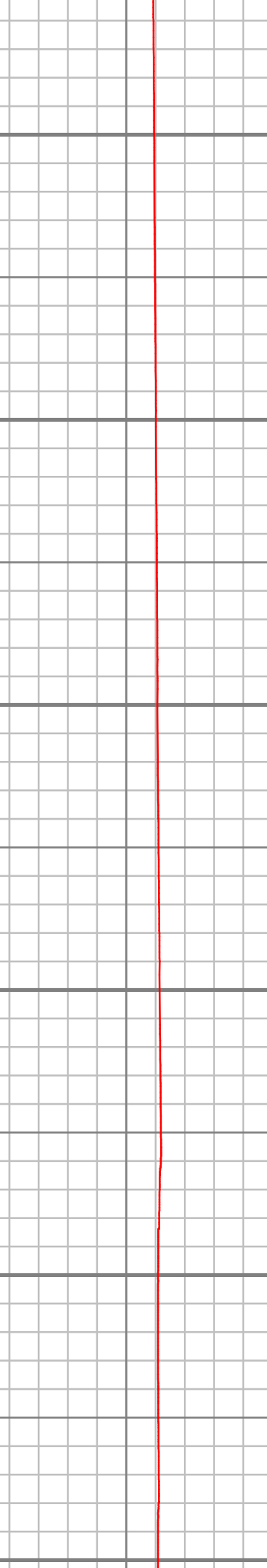
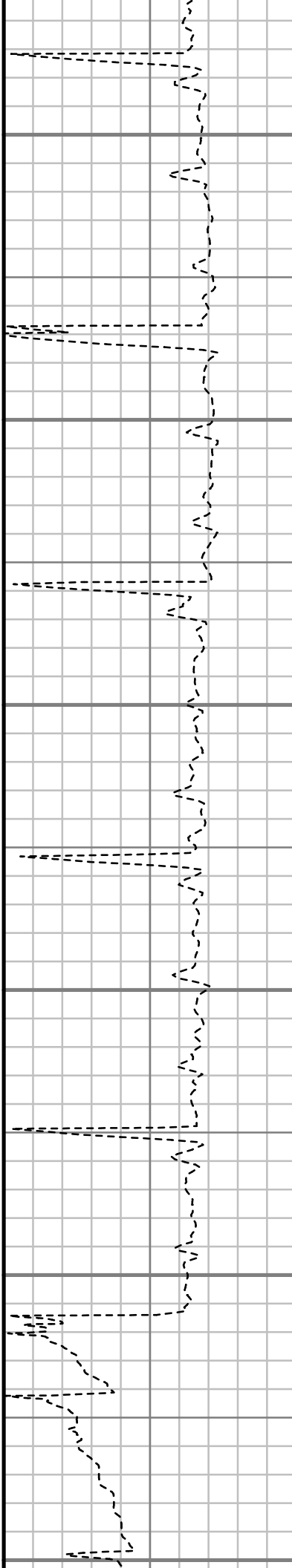
6400

6500

6600

6700

6800



S: 66 MD: 6305.00 ft  
Inc: 1.34 deg Az: 8.52  
deg TVD: 6213.34 ft

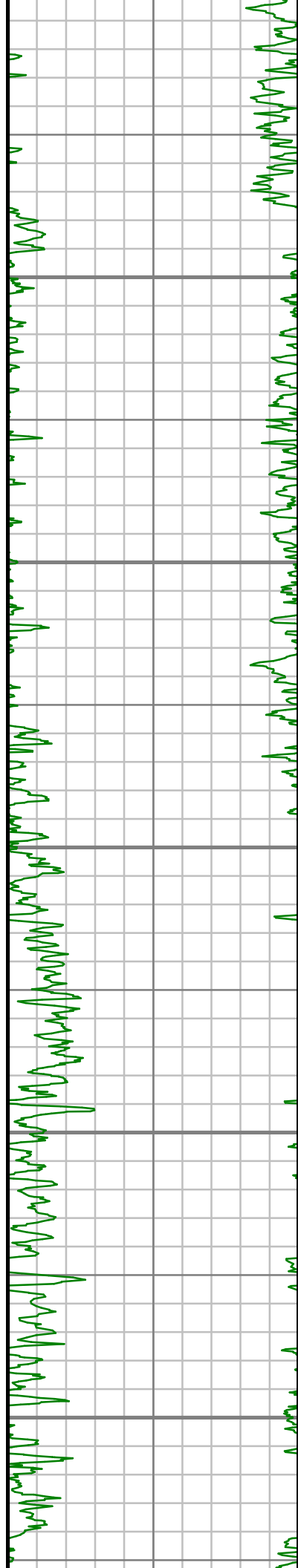
S: 67 MD: 6400.00 ft  
Inc: 0.96 deg Az:  
345.04 deg TVD:  
6308.32 ft

S: 68 MD: 6494.00 ft  
Inc: 1.11 deg Az:  
317.88 deg TVD:  
6402.30 ft

S: 69 MD: 6588.00 ft  
Inc: 1.07 deg Az:  
308.86 deg TVD:  
6496.28 ft

S: 70 MD: 6683.00 ft  
Inc: 1.29 deg Az:  
301.29 deg TVD:  
6591.26 ft

S: 71 MD: 6778.00 ft  
Inc: 8.24 deg Az:  
179.77 deg TVD:  
6685.96 ft



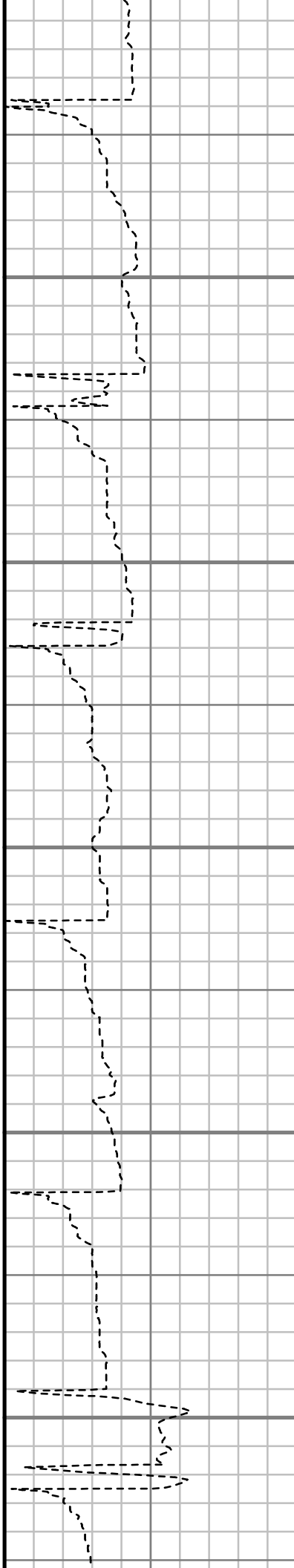
6900

7000

7100

7200

7300



S: 72 MD: 6873.00 ft  
Inc: 17.85 deg Az:  
176.99 deg TVD:  
6778.40 ft

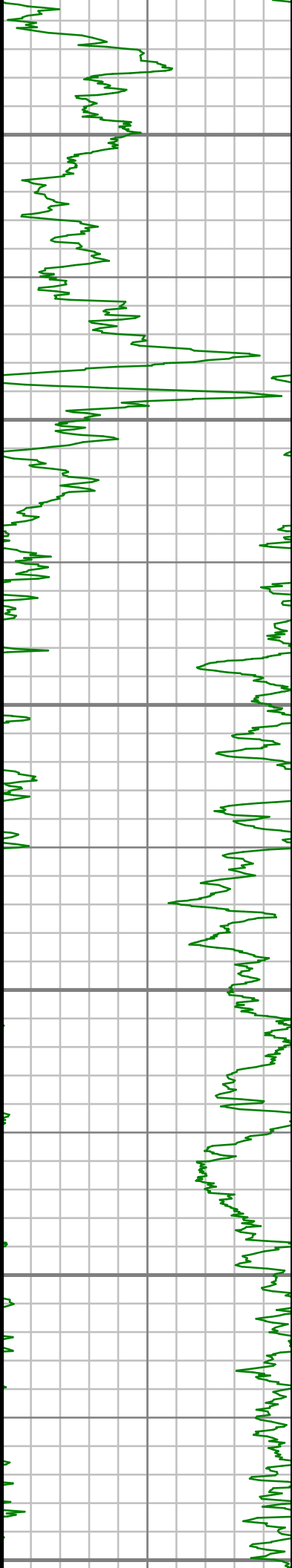
S: 73 MD: 6968.00 ft  
Inc: 21.83 deg Az:  
179.66 deg TVD:  
6867.74 ft

S: 74 MD: 7063.00 ft  
Inc: 28.30 deg Az:  
184.97 deg TVD:  
6953.76 ft

S: 75 MD: 7158.00 ft  
Inc: 37.30 deg Az:  
180.64 deg TVD:  
7033.54 ft

S: 76 MD: 7254.00 ft  
Inc: 50.36 deg Az:  
181.46 deg TVD:  
7102.64 ft

S: 77 MD: 7350.00 ft



7400

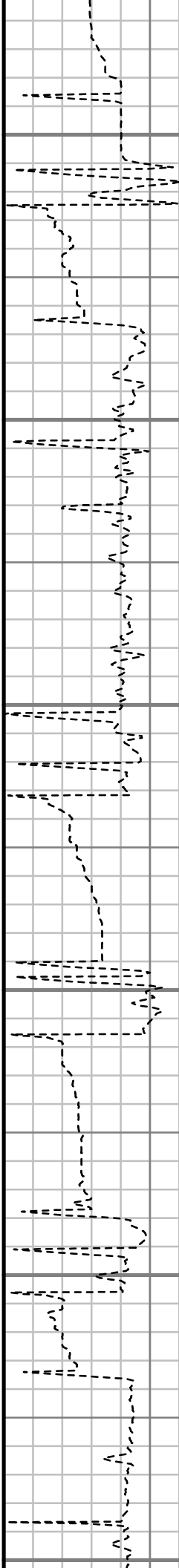
7500

7600

7700

7800

7900



S: 77 MD: 7330.00 ft  
Inc: 58.65 deg Az:  
182.52 deg TVD:  
7158.34 ft

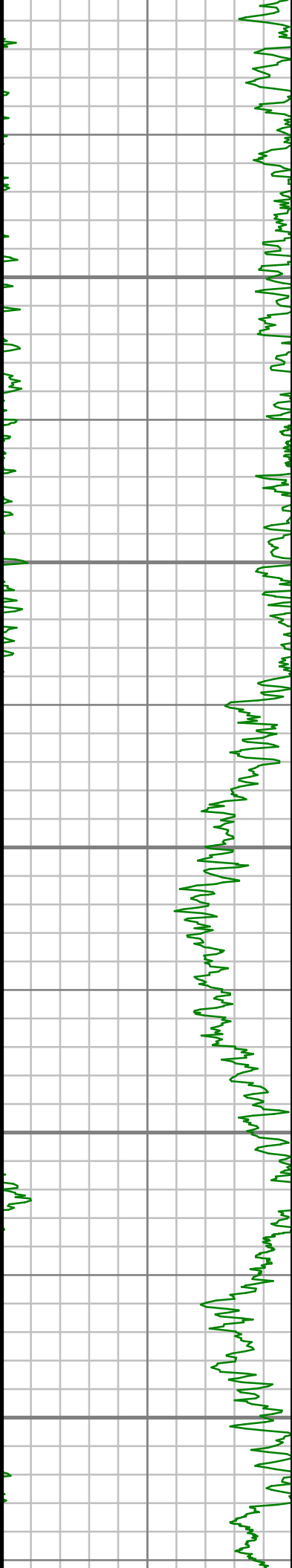
S: 78 MD: 7445.00 ft  
Inc: 67.74 deg Az:  
179.56 deg TVD:  
7201.14 ft

S: 79 MD: 7540.00 ft  
Inc: 69.57 deg Az:  
179.21 deg TVD:  
7235.71 ft

S: 80 MD: 7635.00 ft  
Inc: 69.65 deg Az:  
178.04 deg TVD:  
7268.81 ft

S: 81 MD: 7730.00 ft  
Inc: 79.44 deg Az:  
176.80 deg TVD:  
7294.09 ft

S: 82 MD: 7825.00 ft  
Inc: 88.05 deg Az:  
178.83 deg TVD:  
7304.43 ft



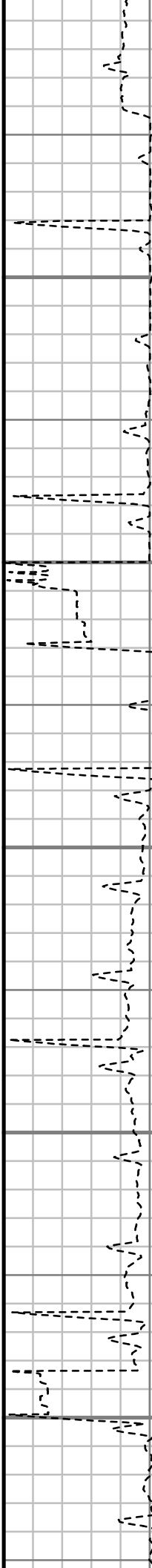
8000

8100

8200

8300

8400



S: 83 MD: 7920.00 ft  
Inc: 89.03 deg Az:  
179.16 deg TVD:  
7306.85 ft

S: 84 MD: 8015.00 ft  
Inc: 88.96 deg Az:  
179.87 deg TVD:  
7308.52 ft

S: 85 MD: 8109.00 ft  
Inc: 89.77 deg Az:  
179.07 deg TVD:  
7309.56 ft

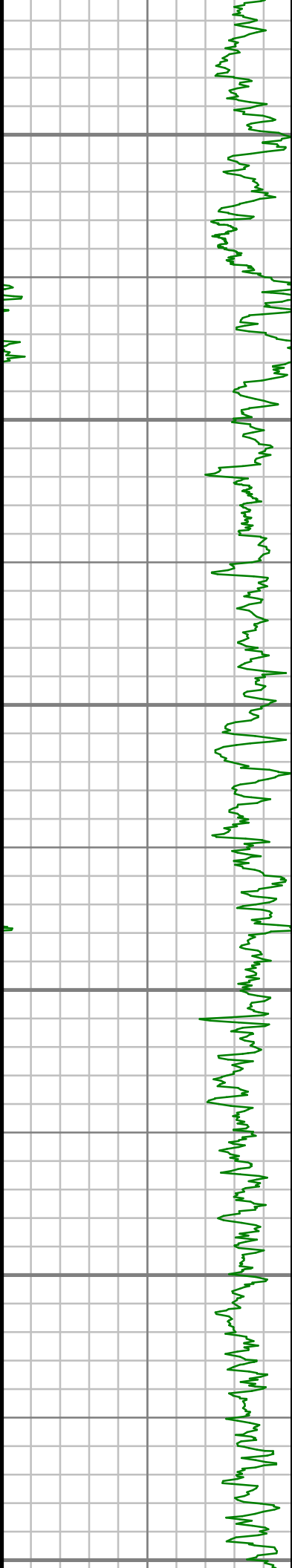
S: 86 MD: 8204.00 ft  
Inc: 90.81 deg Az:  
177.91 deg TVD:  
7309.09 ft

S: 87 MD: 8298.00 ft  
Inc: 91.14 deg Az:  
177.42 deg TVD:  
7307.50 ft

S: 88 MD: 8393.00 ft  
Inc: 91.71 deg Az:  
178.10 deg TVD:  
7305.13 ft







8500

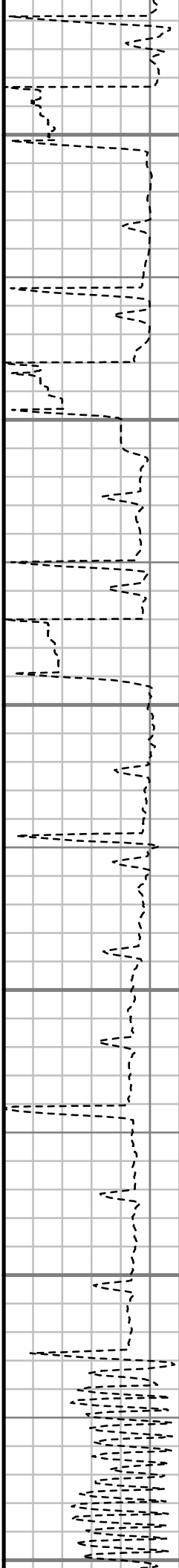
8600

8700

8800

8900

9000



S: 89 MD: 8488.00 ft  
Inc: 92.01 deg Az:  
179.41 deg TVD:  
7302.05 ft

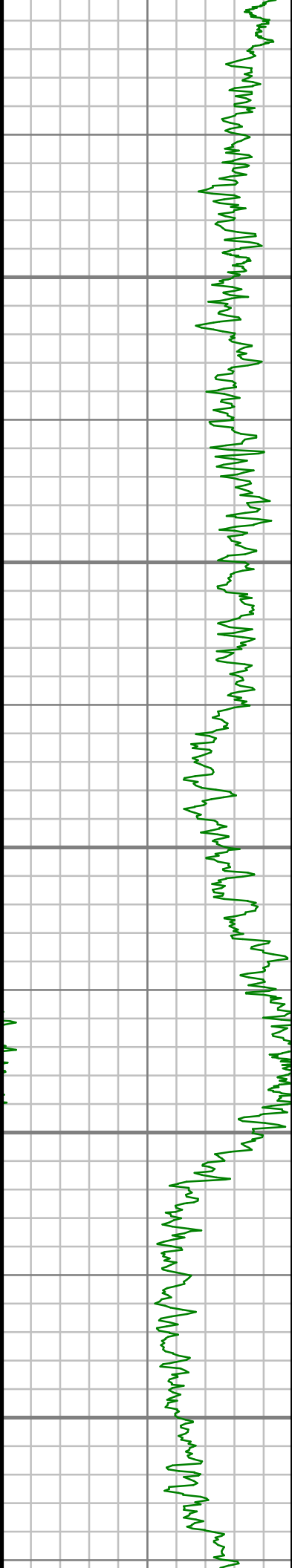
S: 90 MD: 8582.00 ft  
Inc: 91.04 deg Az:  
180.07 deg TVD:  
7299.55 ft

S: 91 MD: 8677.00 ft  
Inc: 88.79 deg Az:  
181.31 deg TVD:  
7299.69 ft

S: 92 MD: 8772.00 ft  
Inc: 88.83 deg Az:  
181.09 deg TVD:  
7301.66 ft

S: 93 MD: 8867.00 ft  
Inc: 89.70 deg Az:  
180.55 deg TVD:  
7302.88 ft

S: 94 MD: 8962.00 ft  
Inc: 90.80 deg Az:  
179.37 deg TVD:  
7302.47 ft



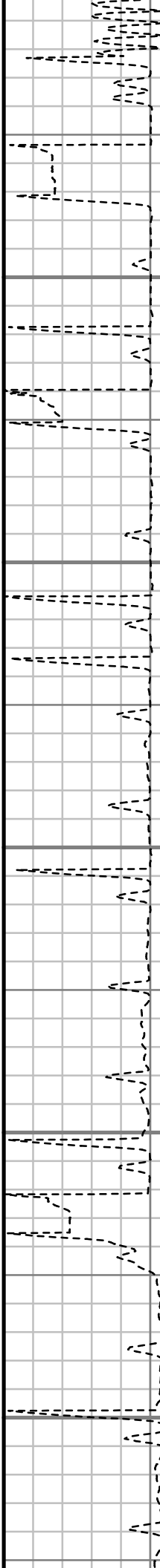
9100

9200

9300

9400

9500



S: 95 MD: 9057.00 ft  
Inc: 90.70 deg Az:  
179.97 deg TVD:  
7301.21 ft

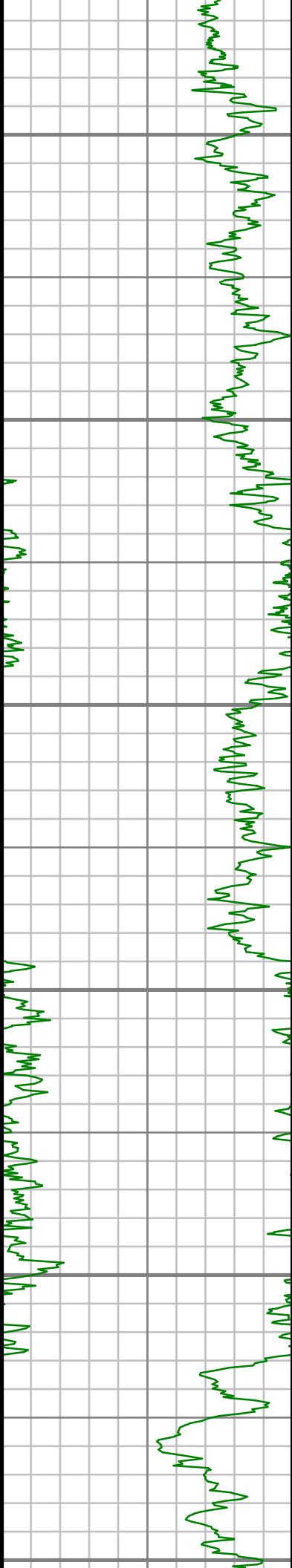
S: 96 MD: 9152.00 ft  
Inc: 88.39 deg Az:  
181.81 deg TVD:  
7301.96 ft

S: 97 MD: 9247.00 ft  
Inc: 89.70 deg Az:  
181.02 deg TVD:  
7303.55 ft

S: 98 MD: 9343.00 ft  
Inc: 90.77 deg Az:  
180.36 deg TVD:  
7303.15 ft

S: 99 MD: 9438.00 ft  
Inc: 89.70 deg Az:  
181.44 deg TVD:  
7302.76 ft

S: 100 MD: 9534.00 ft  
Inc: 90.80 deg Az:  
180.86 deg TVD:



9600

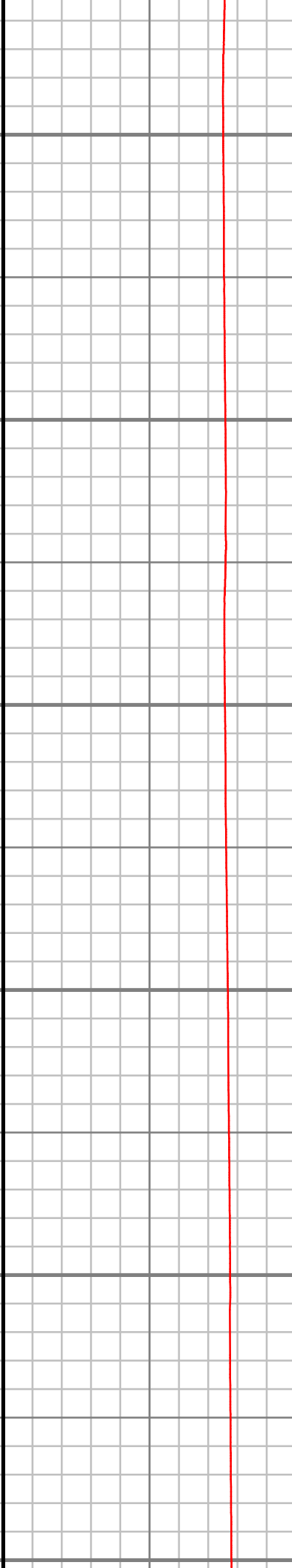
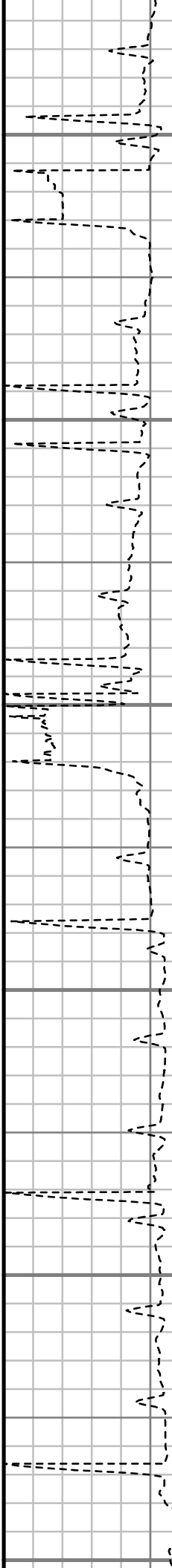
9700

9800

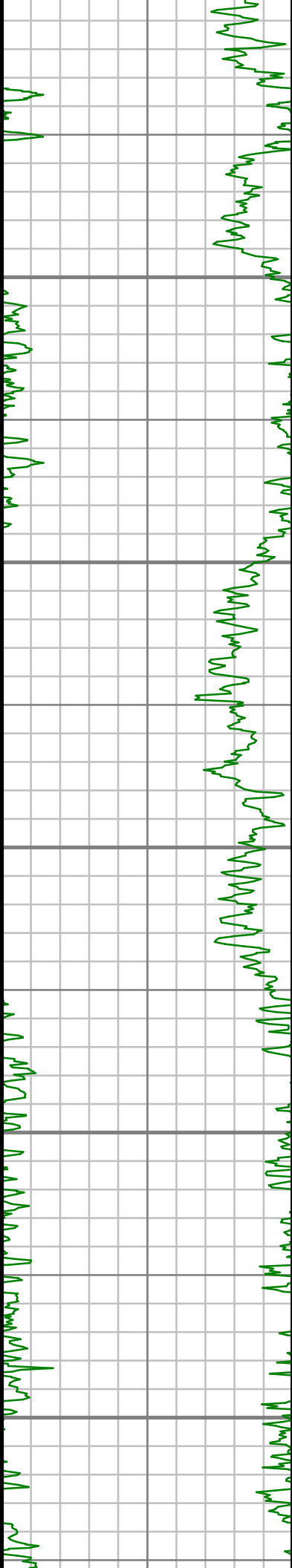
9900

10000

10100



7302.34 ft
S: 101 MD: 9629.00 ft Inc: 90.17 deg Az: 181.21 deg TVD: 7301.54 ft
S: 102 MD: 9724.00 ft Inc: 90.74 deg Az: 180.17 deg TVD: 7300.79 ft
S: 103 MD: 9819.00 ft Inc: 89.09 deg Az: 181.02 deg TVD: 7300.93 ft
S: 104 MD: 9914.00 ft Inc: 89.40 deg Az: 180.57 deg TVD: 7302.18 ft
S: 105 MD: 10009.00 ft Inc: 89.60 deg Az: 179.83 deg TVD: 7303.01 ft



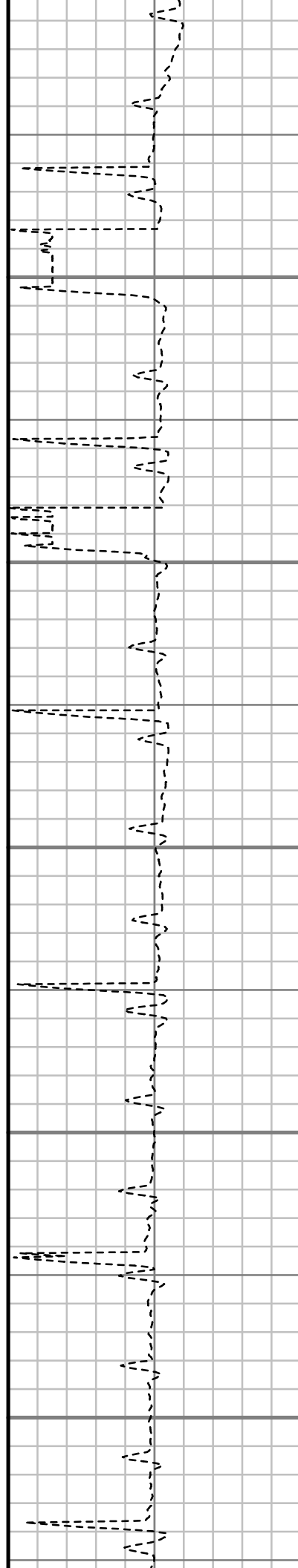
10200

10300

10400

10500

10600



S: 106 MD: 10103.00 ft  
Inc: 90.97 deg Az:  
178.78 deg TVD:  
7302.54 ft

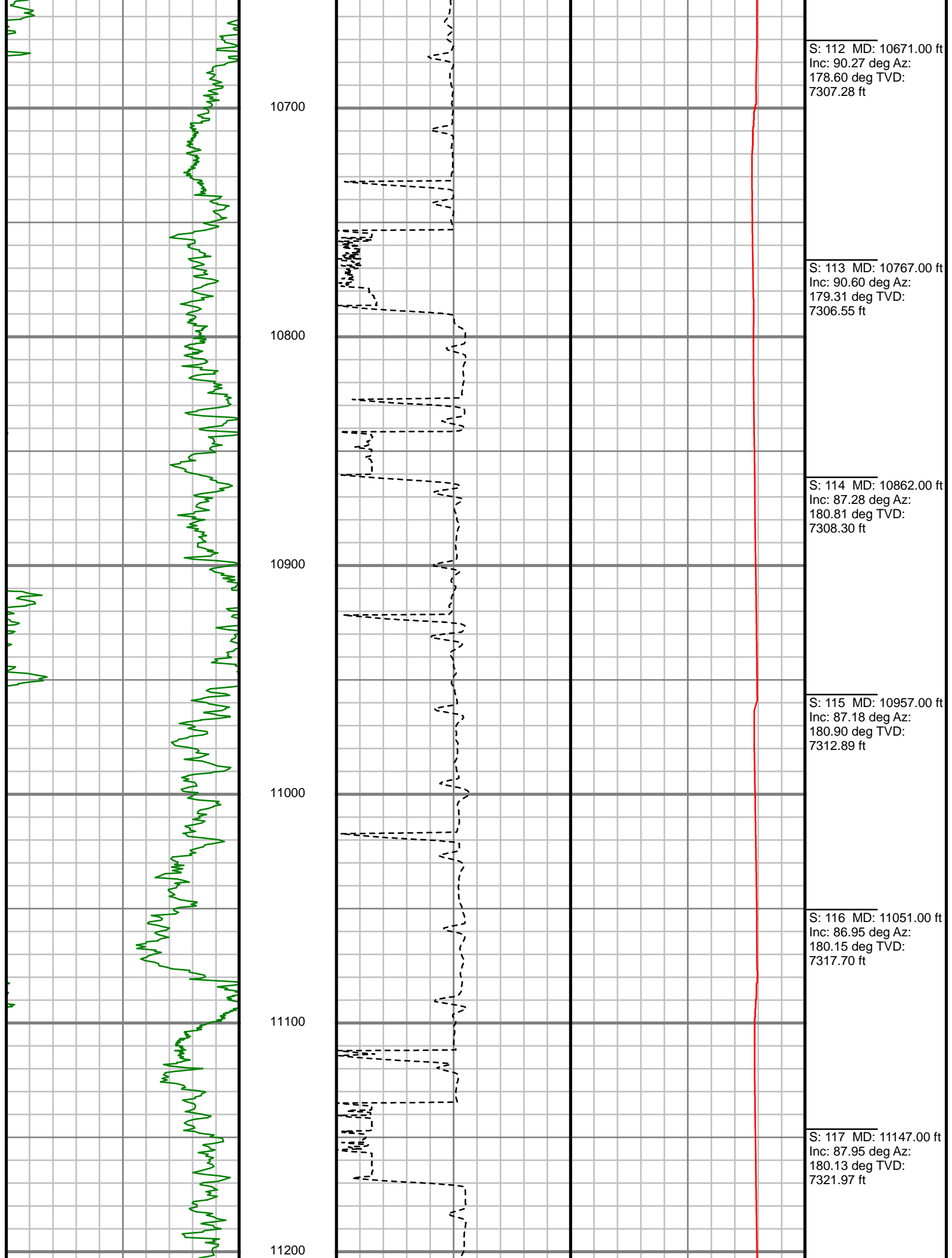
S: 107 MD: 10198.00 ft  
Inc: 89.63 deg Az:  
179.00 deg TVD:  
7302.04 ft

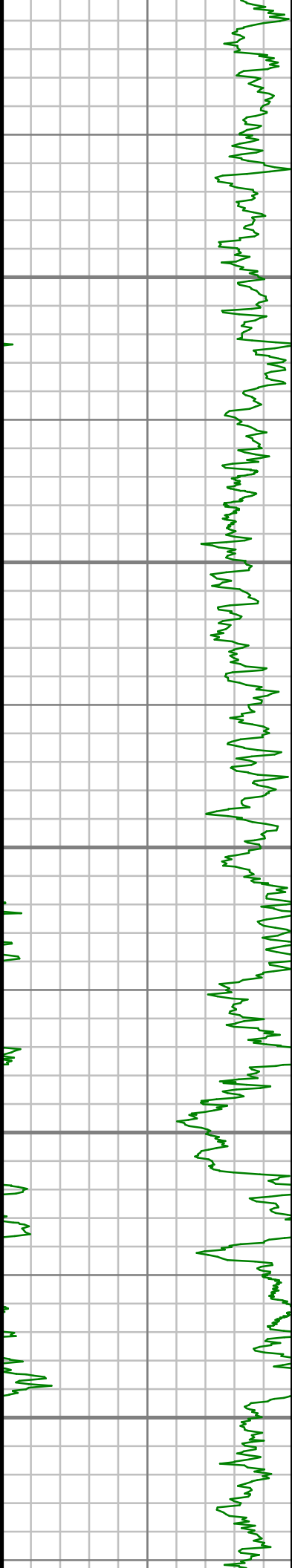
S: 108 MD: 10293.00 ft  
Inc: 88.73 deg Az:  
180.50 deg TVD:  
7303.41 ft

S: 109 MD: 10387.00 ft  
Inc: 89.13 deg Az:  
180.12 deg TVD:  
7305.17 ft

S: 110 MD: 10482.00 ft  
Inc: 89.30 deg Az:  
180.18 deg TVD:  
7306.47 ft

S: 111 MD: 10577.00 ft  
Inc: 89.73 deg Az:  
178.98 deg TVD:  
7307.28 ft





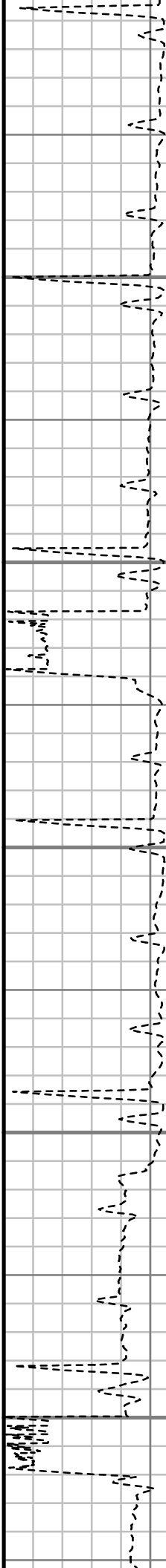
11300

11400

11500

11600

11700



S: 118 MD: 11241.00 ft  
Inc: 90.37 deg Az:  
180.49 deg TVD:  
7323.35 ft

S: 119 MD: 11336.00 ft  
Inc: 90.84 deg Az:  
180.41 deg TVD:  
7322.35 ft

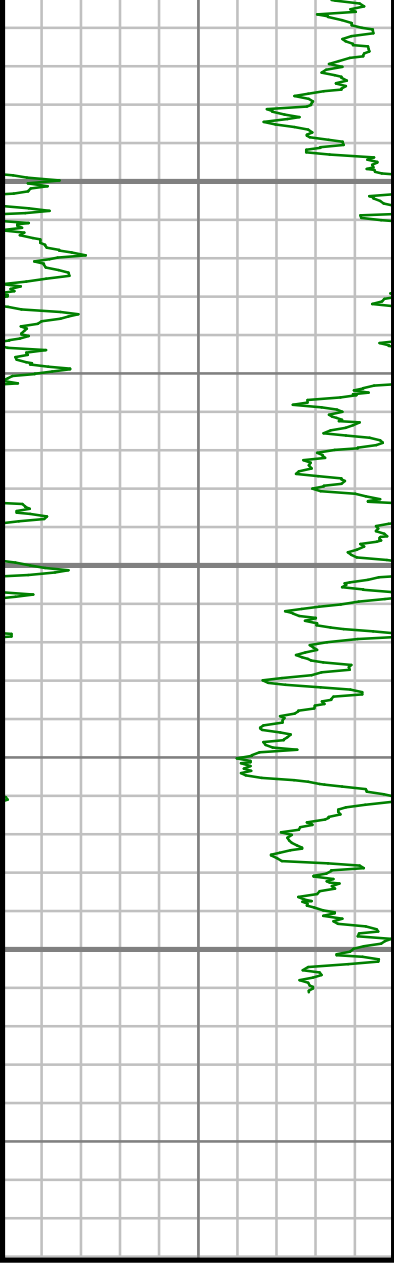
S: 120 MD: 11432.00 ft  
Inc: 89.16 deg Az:  
179.95 deg TVD:  
7322.35 ft

S: 121 MD: 11527.00 ft  
Inc: 87.92 deg Az:  
179.84 deg TVD:  
7324.77 ft

S: 122 MD: 11622.00 ft  
Inc: 87.42 deg Az:  
179.64 deg TVD:  
7328.63 ft

S: 123 MD: 11718.00 ft  
Inc: 86.95 deg Az:  
179.57 deg TVD:  
7333.35 ft



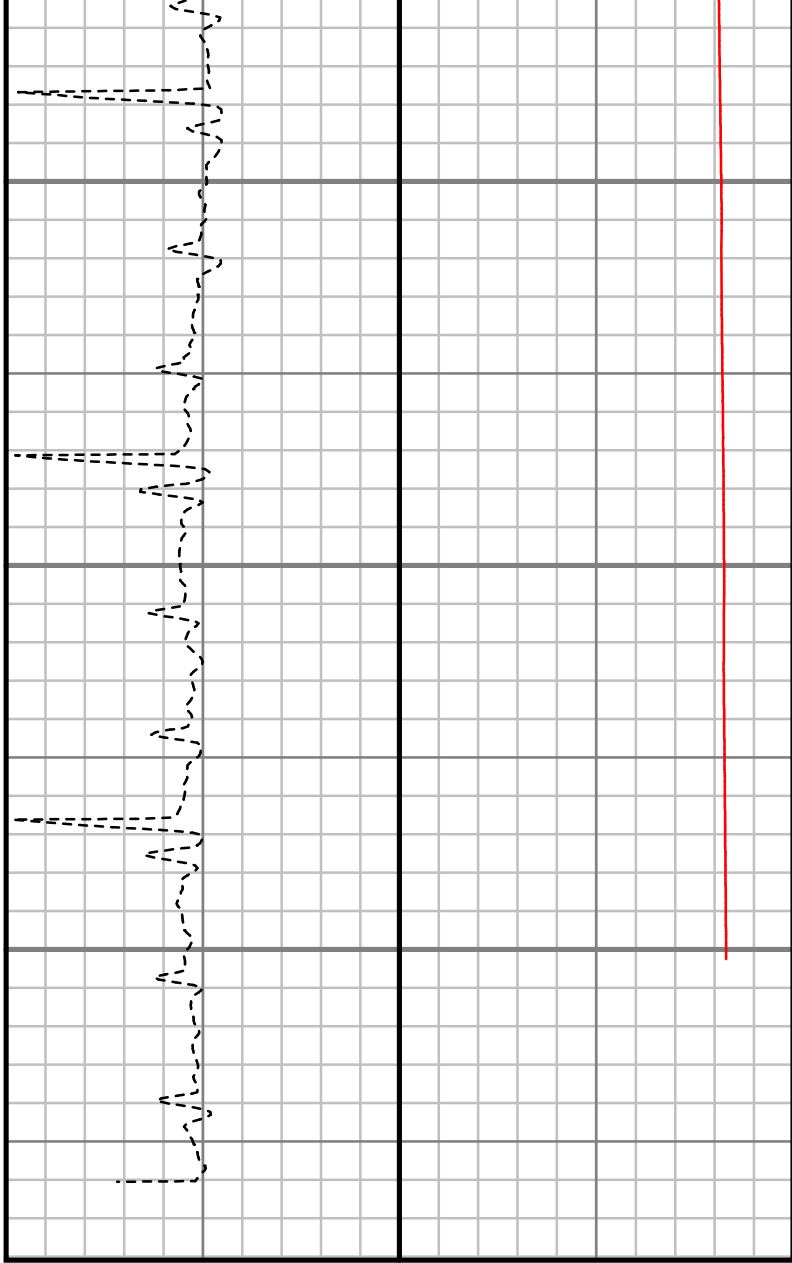


11800

11900

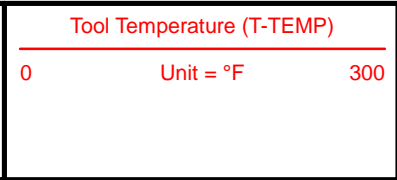
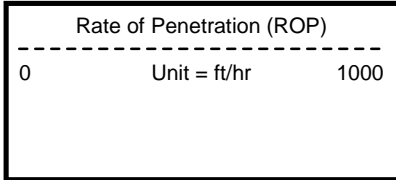
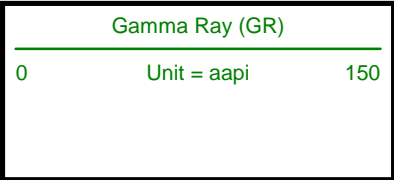
12000

MEASURED DEPTH  
1:600 (ft)



S: 124 MD: 11812.00 ft  
Inc: 86.75 deg Az:  
179.35 deg TVD:  
7338.52 ft

S: 125 MD: 12060.00 ft  
Inc: 86.75 deg Az:  
179.35 deg TVD:  
7358.52 ft



Comments



GAMMA RAY

2" = 100' FEET MD