

HALLIBURTON

iCem[®] Service

EXTRACTION OIL & GAS

Date: Monday, February 08, 2016

JOHNSON TRUST #7 PRODUCTION

Job Date: Thursday, February 04, 2016

Sincerely,

Julia Nichols

Legal Notice

Warning Disclaimer

Although the information contained in this report is based on sound engineering practices, the copyright owner(s) does (do) not accept any responsibility whatsoever, in negligence or otherwise, for any loss or damage arising from the possession or use of the report whether in terms of correctness or otherwise. The application, therefore, by the user of this report or any part thereof, is solely at the user's own risk.

Limitations of Liability

Except as expressly set forth herein, there are no representations or warranties by Halliburton, express or implied, including implied warranties of merchantability and/or fitness for a particular purpose. In no event will Halliburton or its suppliers be liable for consequential, incidental, special, punitive or exemplary damages (including, without limitation, loss of data, profits, use of hardware, or software). Customer accepts full responsibility for any investment made based on results from the Software. Any interpretations, analyses or modeling of any data, including, but not limited to Customer data, and any recommendation or decisions based upon such interpretations, analyses or modeling are opinions based upon inferences from measurements and empirical relationships and assumptions, which inferences and assumptions are not infallible, and with respect to which professional may differ. Accordingly, Halliburton cannot and does not warrant the accuracy, correctness or completeness of any such interpretation, recommendation, modeling or other products of the Software Product. As such, any interpretation, recommendation or modeling resulting from the Software for the purpose of any drilling, well treatment, production or financial decision will be at the sole risk of Customer. Under no circumstances will Halliburton or its suppliers be liable for any damages.

Table of Contents

Cementing Job Summary 4

 Executive Summary4

Real-Time Job Summary 7

 Job Event Log.....7

Attachments..... 9

 EXTRACTION JOHNSON TRUST PRODUCTION-Custom Results.png9

1.0 Cementing Job Summary

1.1 Executive Summary

Halliburton appreciates the opportunity to perform the cementing services on the **Johnson Trust #7** cement **Production** casing job. A pre-job safety meeting was held before the job where details of the job were discussed, potential safety hazards were reviewed, and environmental compliance procedures were outlined.

All spacer and 29 bbls of cement back to surface.

Halliburton maintains a continuous quality improvement process and appreciates any comments or suggestions that you may have. Halliburton again thanks you for the opportunity to perform service work on this well. We hope to be your solutions provider for future projects.

Respectfully,

Halliburton [Ft. Lupton]

HALLIBURTON

Cementing Job Summary

The Road to Excellence Starts with Safety

| | | | | | | | | | | | |
|---|------------------------------|--|-------|--------------------------------------|--------|---------------------------|------------------------|-----------------------------|---------------|---------------|---------------------|
| Sold To #: 369404 | | Ship To #: 3699326 | | Quote #: | | Sales Order #: 0903100002 | | | | | |
| Customer: EXTRACTION OIL & GAS | | | | Customer Rep: Larry Siegel | | | | | | | |
| Well Name: JOHNSON TRUST | | Well #: 7 | | API/UWI #: 05-123-42317-00 | | | | | | | |
| Field: WATTENBERG | | City (SAP): LONGMONT | | County/Parish: WELD | | State: COLORADO | | | | | |
| Legal Description: NW SW-13-2N-68W-2097FSL-388FWL | | | | | | | | | | | |
| Contractor: PATTERSON-UTI ENERGY | | | | Rig/Platform Name/Num: PATTERSON 346 | | | | | | | |
| Job BOM: 7523 | | | | | | | | | | | |
| Well Type: HORIZONTAL OIL | | | | | | | | | | | |
| Sales Person: HALAMERICA\HX38199 | | | | Srv Supervisor: Kendall Broom | | | | | | | |
| Job | | | | | | | | | | | |
| Formation Name | | | | | | | | | | | |
| Formation Depth (MD) | | Top | | Bottom | | | | | | | |
| Form Type | | | | BHST | | | | | | | |
| Job depth MD | | 12256ft | | Job Depth TVD | | | | | | | |
| Water Depth | | | | Wk Ht Above Floor | | | | | | | |
| Perforation Depth (MD) | | From | | To | | | | | | | |
| Well Data | | | | | | | | | | | |
| Description | New / Used | Size in | ID in | Weight lbm/ft | Thread | Grade | Top MD ft | Bottom MD ft | Top TVD ft | Bottom TVD ft | |
| Casing | | 9.625 | 8.921 | 36 | | | | | | | |
| Casing | | 5.5 | 4.778 | 20 | | | | 12223 | | 0 | |
| Open Hole Section | | | 7.875 | | | | | 12256 | | | |
| Tools and Accessories | | | | | | | | | | | |
| Type | Size in | Qty | Make | Depth ft | | Type | Size in | Qty | Make | | |
| Guide Shoe | | | | | | Top Plug | 5.5 | 1 | | | |
| Float Shoe | 5.5 | 1 | | 12256 | | Bottom Plug | | | | | |
| Float Collar | | | | | | SSR plug set | | | | | |
| Insert Float | | | | | | Plug Container | | | | | |
| Stage Tool | | | | | | Centralizers | | | | | |
| Miscellaneous Materials | | | | | | | | | | | |
| Gelling Agt | | Conc | | Surfactant | | Conc | Acid Type | | Qty | Conc | |
| Treatment Fld | | Conc | | Inhibitor | | Conc | Sand Type | | Size | Qty | |
| Fluid Data | | | | | | | | | | | |
| Stage/Plug #: 1 | | | | | | | | | | | |
| Fluid # | Stage Type | Fluid Name | | | Qty | Qty UoM | Mixing Density lbm/gal | Yield ft ³ /sack | Mix Fluid Gal | Rate bbl/min | Total Mix Fluid Gal |
| 1 | 11.5 lb/gal Tuned Spacer III | Tuned Spacer III | | | 50 | bbl | 11.5 | 3.74 | | 6 | |
| 36.09 gal/bbl | | FRESH WATER | | | | | | | | | |
| 0.24 gal/bbl | | MUSOL(R) A, BULK (100003696) | | | | | | | | | |
| 0.24 gal/bbl | | DUAL SPACER SURFACTANT B, 5 GAL PAIL (100003665) | | | | | | | | | |

last updated on 2/5/2016 4:34:34 PM

Page 1 of 2

iCem[™] Service

(v. 4.2.393)

Created: Monday, February 08, 2016

HALLIBURTON

Cementing Job Summary

| | | | | | | | | | |
|---------------------|---------------------------------|--|------|---------|------------------------|----------------|---------------|--------------|---------------------|
| 149.34 lbm/bbl | | BARITE, BULK (100003681) | | | | | | | |
| Fluid # | Stage Type | Fluid Name | Qty | Qty UoM | Mixing Density lbm/gal | Yield ft3/sack | Mix Fluid Gal | Rate bbl/min | Total Mix Fluid Gal |
| 2 | ElastiCem Lead (SCR 742) | ELASTICEM (TM) SYSTEM | 150 | sack | 13.2 | 1.6 | | 8 | 7.67 |
| 7.67 Gal | | FRESH WATER | | | | | | | |
| Fluid # | Stage Type | Fluid Name | Qty | Qty UoM | Mixing Density lbm/gal | Yield ft3/sack | Mix Fluid Gal | Rate bbl/min | Total Mix Fluid Gal |
| 3 | ElastiCem Tail Cement (SCR 742) | ELASTICEM (TM) SYSTEM | 1400 | sack | 13.2 | 1.6 | | 8 | 7.68 |
| 7.68 Gal | | FRESH WATER | | | | | | | |
| Fluid # | Stage Type | Fluid Name | Qty | Qty UoM | Mixing Density lbm/gal | Yield ft3/sack | Mix Fluid Gal | Rate bbl/min | Total Mix Fluid Gal |
| 4 | MMCR Displacement | MMCR Displacement | 0 | bbl | 8.33 | | | 8 | |
| 0.50 gal/bbl | | MICRO MATRIX CEMENT RETARDER, 1 GAL PAIL (100003780) | | | | | | | |
| Fluid # | Stage Type | Fluid Name | Qty | Qty UoM | Mixing Density lbm/gal | Yield ft3/sack | Mix Fluid Gal | Rate bbl/min | Total Mix Fluid Gal |
| 5 | Displacement | Displacement | 271 | bbl | 8.33 | | | 8 | |
| | | | | | | | | | |
| Cement Left In Pipe | | Amount | | ft | Reason | | Shoe Joint | | |
| Comment | | | | | | | | | |

2.0 Real-Time Job Summary

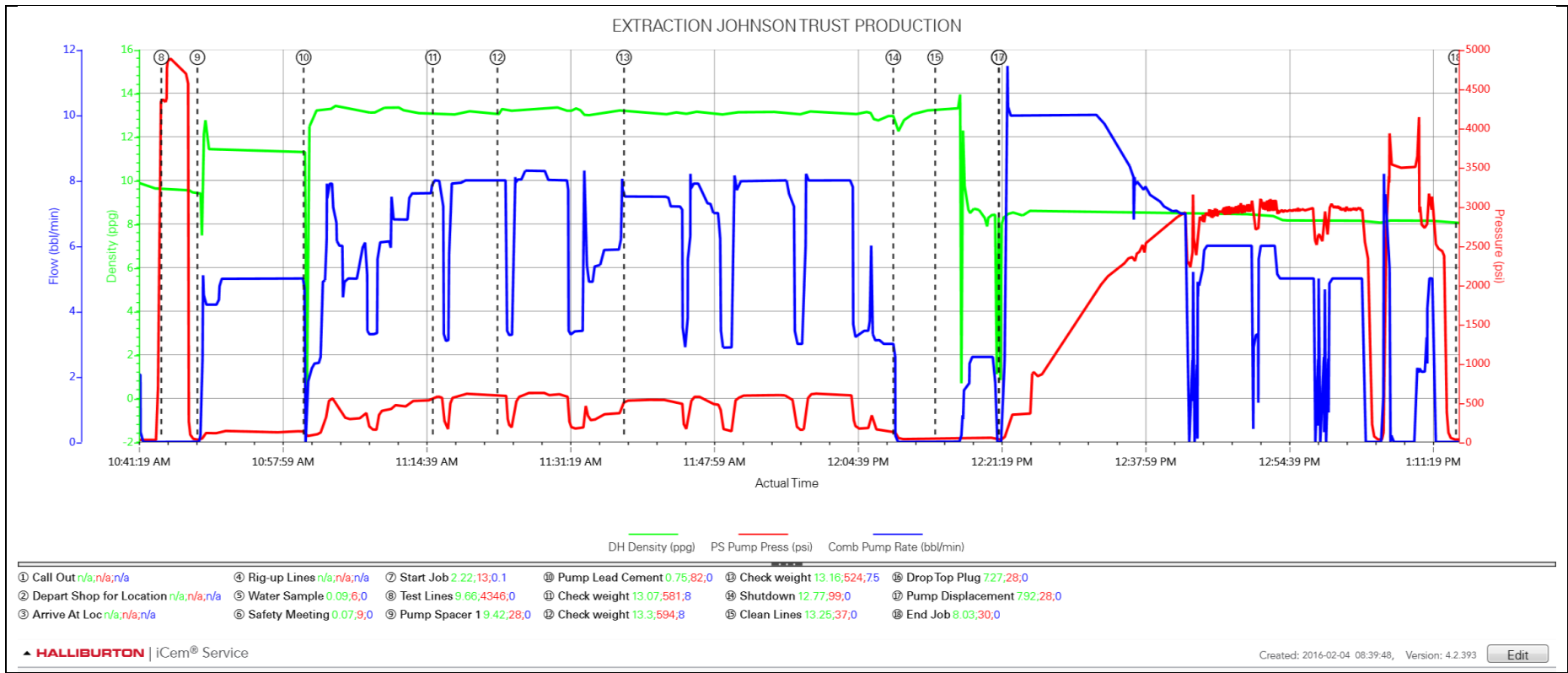
2.1 Job Event Log

| Type | Seq. No. | Activity | Graph Label | Date | Time | Source | DH Density (ppg) | PS Pump Press (psi) | Comb Pump Rate (bbl/min) | Comments |
|-------|----------|--------------------------|--------------------------|----------|----------|--------|---------------------|------------------------|-----------------------------|--|
| Event | 1 | Call Out | Call Out | 2/4/2016 | 00:30:00 | USER | | | | Called Crew out to be on location at 0700 |
| Event | 2 | Depart Shop for Location | Depart Shop for Location | 2/4/2016 | 06:00:00 | USER | | | | Held a safety meeting before leaving for location |
| Event | 3 | Arrive At Loc | Arrive At Loc | 2/4/2016 | 06:30:00 | USER | | | | Arrived on location and met with the company man |
| Event | 4 | Rig-up Lines | Rig-up Lines | 2/4/2016 | 06:45:00 | USER | | | | Had a hazard hunt before spotting in trucks and rigging up |
| Event | 5 | Other | Water Sample | 2/4/2016 | 09:00:00 | USER | | | | Temp started at 110°F and was rechecked at 77°F, Chlorides 0 mg/L, Sulfates < 200 mg/L, PH 7, Iron 0 mg/L |
| Event | 6 | Safety Meeting | Safety Meeting | 2/4/2016 | 09:45:00 | USER | | | | Held a safety meeting with the rig crew to discuss the operation and safety |
| Event | 7 | Start Job | Start Job | 2/4/2016 | 10:39:34 | COM4 | 2.22 | 13.00 | 0.10 | Filled lines with 2 bbl water |
| Event | 8 | Test Lines | Test Lines | 2/4/2016 | 10:44:10 | COM4 | 9.66 | 4346.00 | 0.00 | Tested to 4898 psi |
| Event | 9 | Pump Spacer 1 | Pump Spacer 1 | 2/4/2016 | 10:48:20 | COM4 | 9.42 | 28.00 | 0.00 | Pumped 50 bbls Tuned Spacer III at 11.5 lb/gal, 3.74 yield, 23.8 gal/sks. Pumped at 5bpm and 140 psi |
| Event | 10 | Pump Lead Cement | Pump Lead Cement | 2/4/2016 | 11:00:39 | COM4 | 1.28 | 85.00 | 0.00 | Pumped 442 bbls of 13.2 lb/gal ElastiCem (43 with Super CBL and 399 without), 1.6 Yield, 7.68 gal/sks. Pumped at 8 bpm and 591 psi |
| Event | 11 | Check Weight | Check weight | 2/4/2016 | 11:15:38 | COM4 | 13.07 | 576.00 | 8.00 | Verified weight with pressurized scales |
| Event | 12 | Check Weight | Check weight | 2/4/2016 | 11:23:07 | COM4 | 13.30 | 597.00 | 8.00 | Verified weight with pressurized scales |
| Event | 13 | Check Weight | Check weight | 2/4/2016 | 11:37:47 | COM4 | 13.17 | 527.00 | 7.50 | Verified weight with pressurized scales |
| Event | 14 | Shutdown | Shutdown | 2/4/2016 | 12:09:00 | COM4 | | | | |
| Event | 15 | Clean Lines | Clean Lines | 2/4/2016 | 12:13:51 | COM4 | 13.25 | 37.00 | 0.00 | Washed up cement head and lines |
| Event | 16 | Drop Top Plug | Drop Top Plug | 2/4/2016 | 12:21:13 | COM4 | 6.87 | 28.00 | 0.00 | Dropped plug loaded by tool hand (KLX). |

| | | | | | | | | | | |
|-------|----|-------------------|-------------------|----------|----------|------|------|-------|------|---|
| Event | 17 | Pump Displacement | Pump Displacement | 2/4/2016 | 12:21:15 | COM4 | 7.64 | 28.00 | 0.00 | Pumped 271 bbl displacement, all 50 bbls of spacer was returned to surface as well as 29 bbls of cement. Bumped the plug at 271 bbl and 3910 psi. Checked floats, got 2.5 bbl back on the truck. Burst plug at 4178 psi and pumped another 5bbl for a wet shoe. Checked floats and got 2 bbl back on the truck. |
| Event | 18 | End Job | End Job | 2/4/2016 | 13:14:14 | COM4 | | | | |
| Event | 19 | Rig Down Lines | Rig Down Lines | 2/4/2016 | 13:20:00 | USER | | | | Held a safety meeting before rigging down lines |
| Event | 20 | Depart Location | Depart Location | 2/4/2016 | 14:15:00 | USER | | | | Held a safety huddle before leaving location |

3.0 Attachments

3.1 EXTRACTION JOHNSON TRUST PRODUCTION-Custom Results.png



EXTRACTION JOHNSON TRUST PRODUCTION

