

HALLIBURTON

iCem[®] Service

EXTRACTION OIL & GAS

For: Ty Entenmann

Date: Saturday, February 20, 2016

Johnson Trust 6

Production

Job Date: Monday, February 01, 2016

Sincerely,

Derek Trier

Legal Notice

Warning Disclaimer

Although the information contained in this report is based on sound engineering practices, the copyright owner(s) does (do) not accept any responsibility whatsoever, in negligence or otherwise, for any loss or damage arising from the possession or use of the report whether in terms of correctness or otherwise. The application, therefore, by the user of this report or any part thereof, is solely at the user's own risk.

Limitations of Liability

Except as expressly set forth herein, there are no representations or warranties by Halliburton, express or implied, including implied warranties of merchantability and/or fitness for a particular purpose. In no event will Halliburton or its suppliers be liable for consequential, incidental, special, punitive or exemplary damages (including, without limitation, loss of data, profits, use of hardware, or software). Customer accepts full responsibility for any investment made based on results from the Software. Any interpretations, analyses or modeling of any data, including, but not limited to Customer data, and any recommendation or decisions based upon such interpretations, analyses or modeling are opinions based upon inferences from measurements and empirical relationships and assumptions, which inferences and assumptions are not infallible, and with respect to which professional may differ. Accordingly, Halliburton cannot and does not warrant the accuracy, correctness or completeness of any such interpretation, recommendation, modeling or other products of the Software Product. As such, any interpretation, recommendation or modeling resulting from the Software for the purpose of any drilling, well treatment, production or financial decision will be at the sole risk of Customer. Under no circumstances will Halliburton or its suppliers be liable for any damages.

Table of Contents

1.0 Cementing Job Summary 4

 1.1 Executive Summary4

2.0 Real-Time Job Summary 7

 2.1 Job Event Log7

3.0 Attachments..... 9

 3.1 Case 1-Custom Results.png.....9

 3.2 Case 1-Custom Results (1).png10

1.0 Cementing Job Summary

1.1 Executive Summary

Halliburton appreciates the opportunity to perform the cementing services on the **Johnson Trust 1** cement **Production** casing job. A pre-job safety meeting was held before the job where details of the job were discussed, potential safety hazards were reviewed, and environmental compliance procedures were outlined.

Halliburton maintains a continuous quality improvement process and appreciates any comments or suggestions that you may have. Halliburton again thanks you for the opportunity to perform service work on this well. We hope to be your solutions provider for future projects.

Respectfully,

Halliburton [Ft. Lupton]

Job Times

	Date	Time	Time Zone
Called Out Time:	1/31/2016	1700	MTN
Arrived On Location At:		2000	
Job Started At:	2/1/2016	0839	
Job Completed At:		1103	
Departed Location At:		1200	

Sold To #: 369404		Ship To #: 3699388		Quote #:		Sales Order #: 0903085495					
Customer: EXTRACTION OIL & GAS				Customer Rep: LARRY SEGAL							
Well Name: JOHNSON TRUST			Well #: 6		API/UWI #: 05-123-42316-00						
Field: WATTENBERG		City (SAP): LONGMONT		County/Parish: WELD		State: COLORADO					
Legal Description: NW SW-13-2N-68W-2125FSL-388FWL											
Contractor: PATTERSON-UTI ENERGY				Rig/Platform Name/Num: PATTERSON 346							
Job BOM: 7523											
Well Type: HORIZONTAL OIL											
Sales Person: HALAMERICA\HX38199				Srv Supervisor: Aaron Smith							
Job											
Formation Name											
Formation Depth (MD)		Top		Bottom							
Form Type				BHST							
Job depth MD		12050ft		Job Depth TVD							
Water Depth				Wk Ht Above Floor		3					
Perforation Depth (MD)		From		To							
Well Data											
Description	New / Used	Size in	ID in	Weight lbm/ft	Thread	Grade	Top MD ft	Bottom MD ft	Top TVD ft	Bottom TVD ft	
Casing		9.625	8.921	36			0	1580		0	
Casing		5.5	4.778	20			0	12046		0	
Open Hole Section			7.875				1580	12050	0	0	
Tools and Accessories											
Type	Size in	Qty	Make	Depth ft		Type	Size in	Qty	Make		
Guide Shoe	5.5			1		Top Plug	5.5	1	KLX		
Float Shoe	5.5	1	KLX	12046		Bottom Plug	5.5		HES		
Float Collar	5.5	1	KLX	12042		SSR plug set	5.5		HES		
Insert Float	5.5					Plug Container	5.5	1	HES		
Stage Tool	5.5					Centralizers	5.5		HES		
Fluid Data											
Stage/Plug #: 1											
Fluid #	Stage Type	Fluid Name			Qty	Qty UoM	Mixing Density lbm/gal	Yield ft3/sack	Mix Fluid Gal	Rate bbl/min	Total Mix Fluid Gal
1	11.5 lb/gal Tuned Spacer III	Tuned Spacer III			50	bbl	11.5	3.74		6	

Fluid #	Stage Type	Fluid Name	Qty	Qty UoM	Mixing Density lbm/gal	Yield ft3/sack	Mix Fluid Gal	Rate bbl/min	Total Mix Fluid Gal
2	ElastiCem	ELASTICEM (TM) SYSTEM	150	sack	13.2	1.6		8	7.68
7.68 Gal		FRESH WATER							
Fluid #	Stage Type	Fluid Name	Qty	Qty UoM	Mixing Density lbm/gal	Yield ft3/sack	Mix Fluid Gal	Rate bbl/min	Total Mix Fluid Gal
3	ElastiCem	ELASTICEM (TM) SYSTEM	1375	sack	13.2	1.6		8	7.69
7.69 Gal		FRESH WATER							
Fluid #	Stage Type	Fluid Name	Qty	Qty UoM	Mixing Density lbm/gal	Yield ft3/sack	Mix Fluid Gal	Rate bbl/min	Total Mix Fluid Gal
4	MMCR Displacement	MMCR Displacement	40	bbl	8.33			8	
0.50 gal/bbl		MICRO MATRIX CEMENT RETARDER, 1 GAL PAIL (100003780)							
Fluid #	Stage Type	Fluid Name	Qty	Qty UoM	Mixing Density lbm/gal	Yield ft3/sack	Mix Fluid Gal	Rate bbl/min	Total Mix Fluid Gal
5	Displacement	Displacement	226.8	bbl	8.33			8	
Cement Left In Pipe		Amount	4 ft		Reason			Shoe Joint	
Comment 40 BBLS CEMENT TO SURFACE									

2.0 Real-Time Job Summary

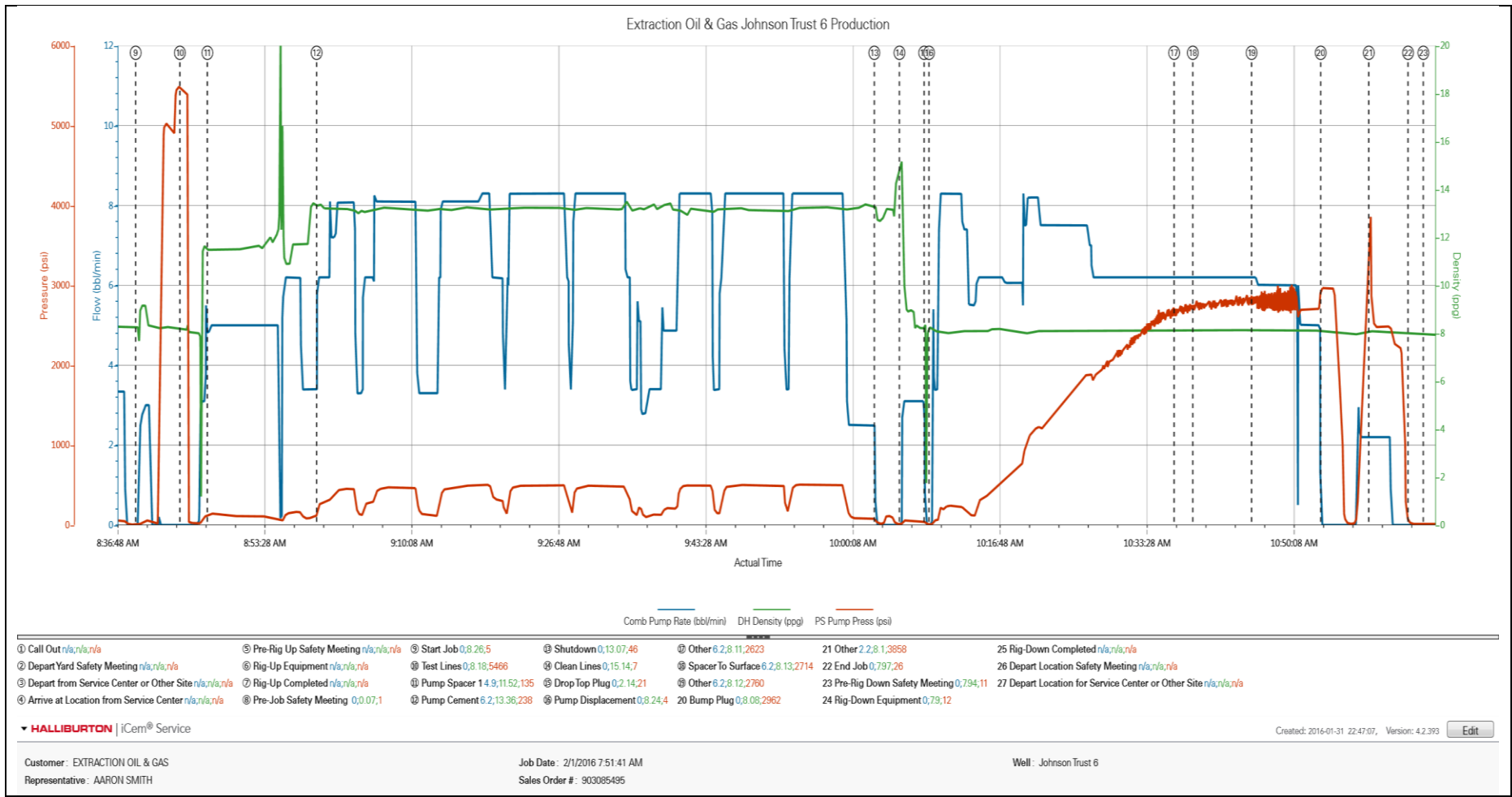
2.1 Job Event Log

Type	Seq. No.	Activity	Graph Label	Date	Time	Source	Comb Pump Rate (bbl/min)	DH Density (ppg)	PS Pump Press (psi)	Comments
Event	1	Call Out	Call Out	1/31/2016	17:00:00	USER				FOR ON LOCATION @ ASAP DUE TO WEATHER, CUSTOMER REQUESTED CREW @ 0500
Event	2	Depart Yard Safety Meeting	Depart Yard Safety Meeting	1/31/2016	19:15:00	USER				JOURNEY MANAGEMENT MEETING PRIOR TO DEPARTURE
Event	3	Depart from Service Center or Other Site	Depart from Service Center or Other Site	1/31/2016	19:30:00	USER				
Event	4	Arrive at Location from Service Center	Arrive at Location from Service Center	1/31/2016	20:00:00	USER				WITH ALL EQUIPMENT AND MATERIALS.
Event	5	Pre-Rig Up Safety Meeting	Pre-Rig Up Safety Meeting	1/31/2016	20:30:00	USER				JSA TO DISCUSS THE HAZARDS OF RIG-UP
Event	6	Rig-Up Equipment	Rig-Up Equipment	1/31/2016	20:45:00	USER				RIGGED UP ALL EQUIPMENT AND SURFACE LINES UP TO THE RED ZONE
Event	7	Rig-Up Completed	Rig-Up Completed	2/1/2016	07:30:00	USER				COMPLETED RIG-UP AFTER CASING CREW WAS RIGGED DOWN.
Event	8	Pre-Job Safety Meeting	Pre-Job Safety Meeting	2/1/2016	08:15:00	USER				WITH CUSTOMER REP AND RIG-CREW
Event	9	Start Job	Start Job	2/1/2016	08:39:02	COM5				WITH WATER SUPPLIED FROM UPRIGHTS, WATER TESTED GOOD TO MIX CEMENT TEMP 68, PH 7, CL 72
Event	10	Test Lines	Test Lines	2/1/2016	08:44:03	COM5	0.00	8.18	5466.00	@5000 PSI
Event	11	Pump Spacer 1	Pump Spacer 1	2/1/2016	08:47:10	COM5	4.90	11.52	135.00	50 BBLs TUNED SPACER @ 11.5 PPG, WITH 12 GAL MUSOL A, 12 GAL DUAL SPACER B, 5 GAL D-AIR. VERIFIED WITH PRESSURIZED SCALES
Event	12	Pump Cement	Pump Cement	2/1/2016	08:59:32	COM5	6.20	13.36	238.00	150 SKS (42.74BBLs) LEAD 1375 SKS(391.82 BBLs) TAIL @ 13.2 PPG, VERIFIED WITH PRESSURIZED SCALES
Event	13	Shutdown	Shutdown	2/1/2016	10:02:46	COM5	0.00	13.07	46.00	
Event	14	Clean Lines	Clean Lines	2/1/2016	10:05:37	COM5	0.00	15.14	7.00	WASH PUMPS AND LINES TO 4 SIDED TANK

Event	15	Drop Top Plug	Drop Top Plug	2/1/2016	10:08:25	COM5	0.00	2.14	21.00	KLX TOOL HAND DROPPED PLUG
Event	16	Pump Displacement	Pump Displacement	2/1/2016	10:08:58	COM5	0.00	8.24	4.00	266 BBLS FRESH WATER
Event	17	Other	Other	2/1/2016	10:36:45	COM5	6.20	8.11	2623.00	
Event	18	Other	Spacer To Surface	2/1/2016	10:38:52	COM5	6.20	8.13	2714.00	@171 BBLS DISPLACEMENT 50 BBLS TO SURFACE
Event	19	Other	Other	2/1/2016	10:45:32	COM5	6.20	8.12	2760.00	@ 227 BBLS DISPLACEMENT, 40 BBLS TO SURFACE
Event	20	Bump Plug	Bump Plug	2/1/2016	10:53:22	COM5	0.00	8.08	2962.00	@500 PSI OVER FINAL CIRCULATING PRESSURE 2768 PSI
Event	21	Other	Other	2/1/2016	10:58:49	USER	2.20	8.10	3858.00	BLOW RUPTURE DISC TO PUMP 5 BBL WET SHOE
Event	22	End Job	End Job	2/1/2016	11:03:16	COM5				THANKS AARON SMITH AND CREW
Event	23	Pre-Rig Down Safety Meeting	Pre-Rig Down Safety Meeting	2/1/2016	11:05:00	USER				JSA TO DISCUSS THE HAZARDS OF RIG-DOWN
Event	24	Rig-Down Equipment	Rig-Down Equipment	2/1/2016	11:10:00	USER				
Event	25	Rig-Down Completed	Rig-Down Completed	2/1/2016	11:45:00	USER				
Event	26	Depart Location Safety Meeting	Depart Location Safety Meeting	2/1/2016	11:55:00	USER				JOURNEY MANAGEMENT MEETING PRIOR TO DEPARTURE
Event	27	Depart Location for Service Center or Other Site	Depart Location for Service Center or Other Site	2/1/2016	12:00:00	USER				THANKS AARON SMITH AND CREW

3.0 Attachments

3.1 Case 1-Custom Results.png



3.2 Case 1-Custom Results (1).png

