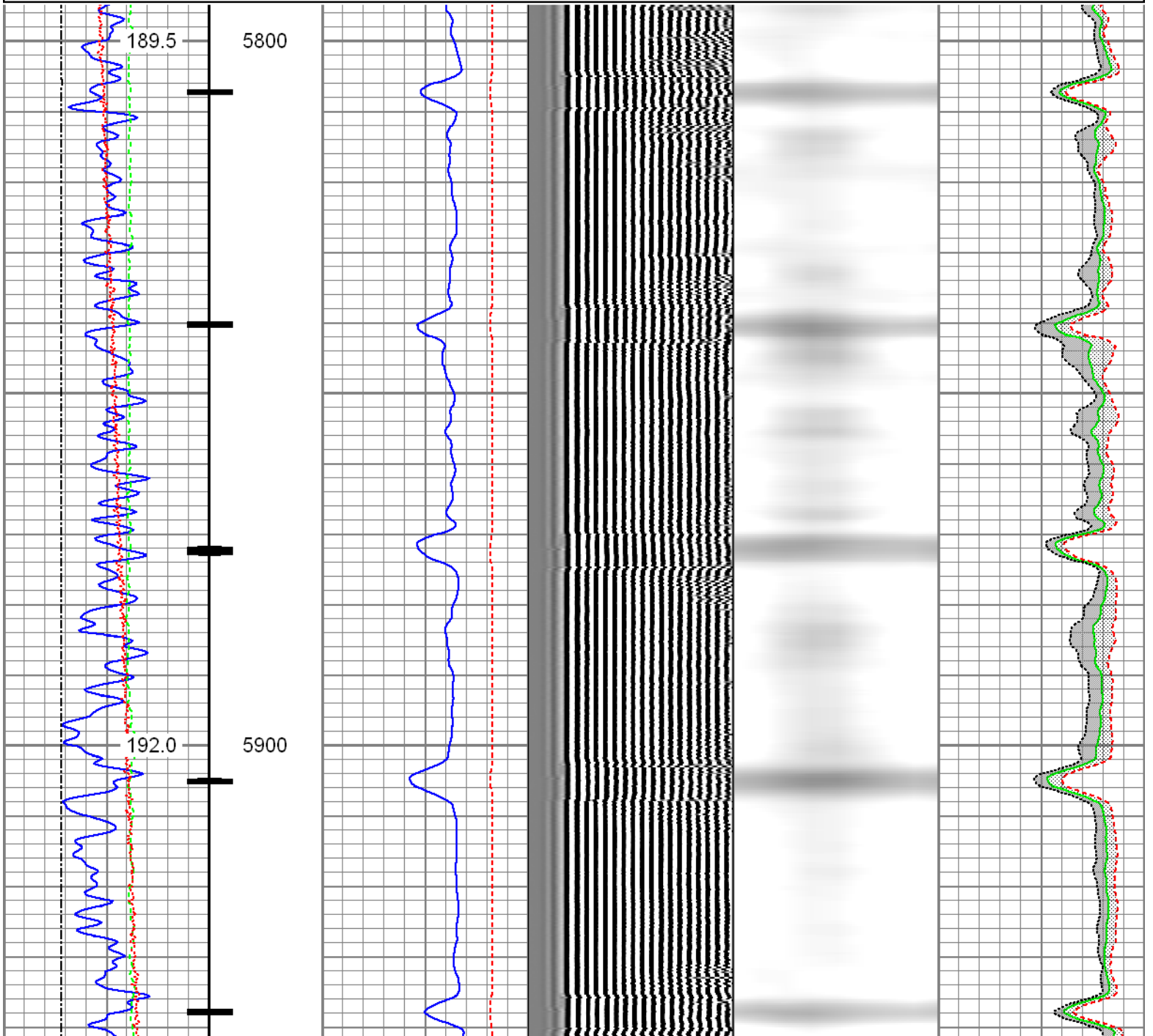
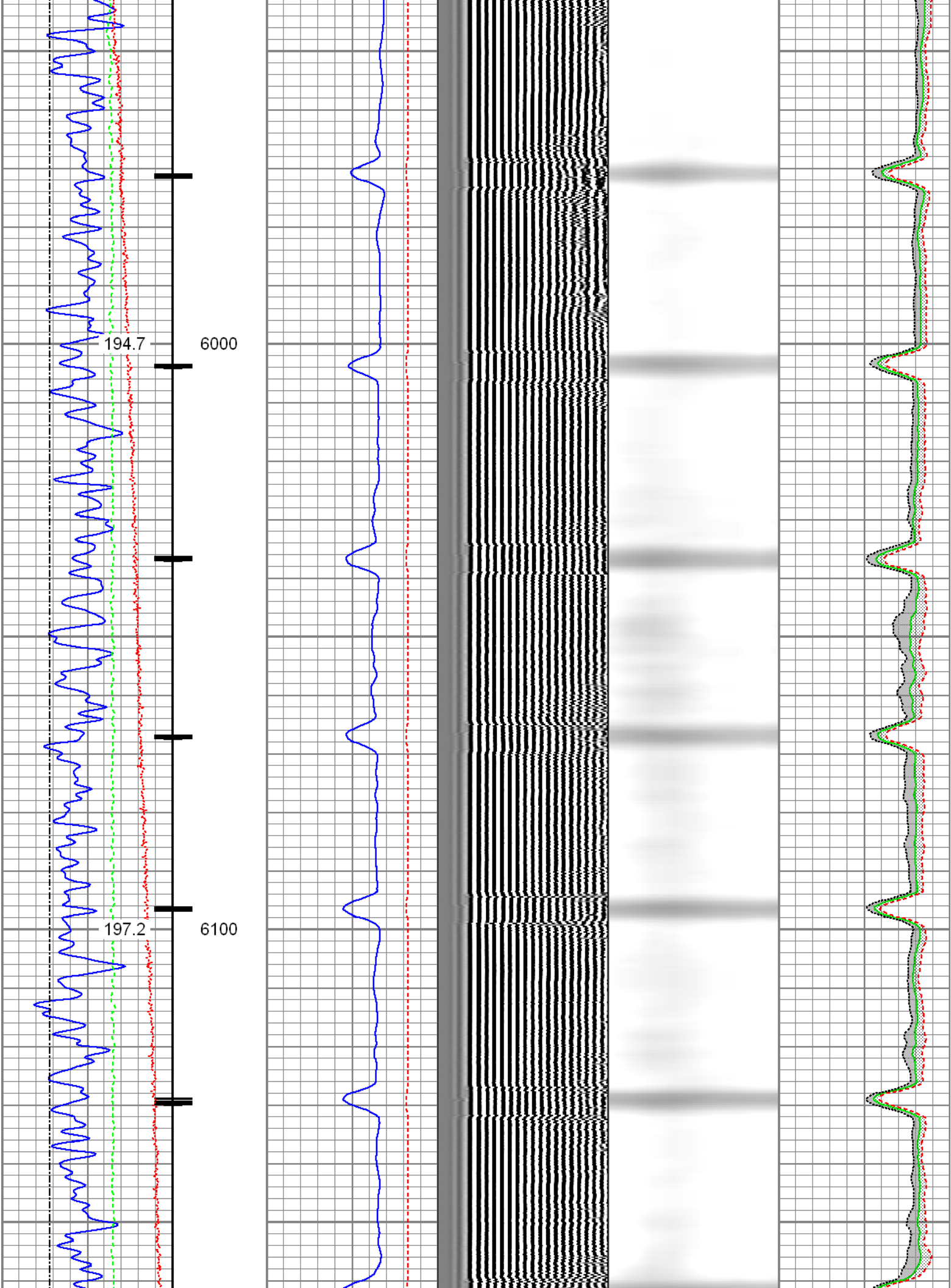
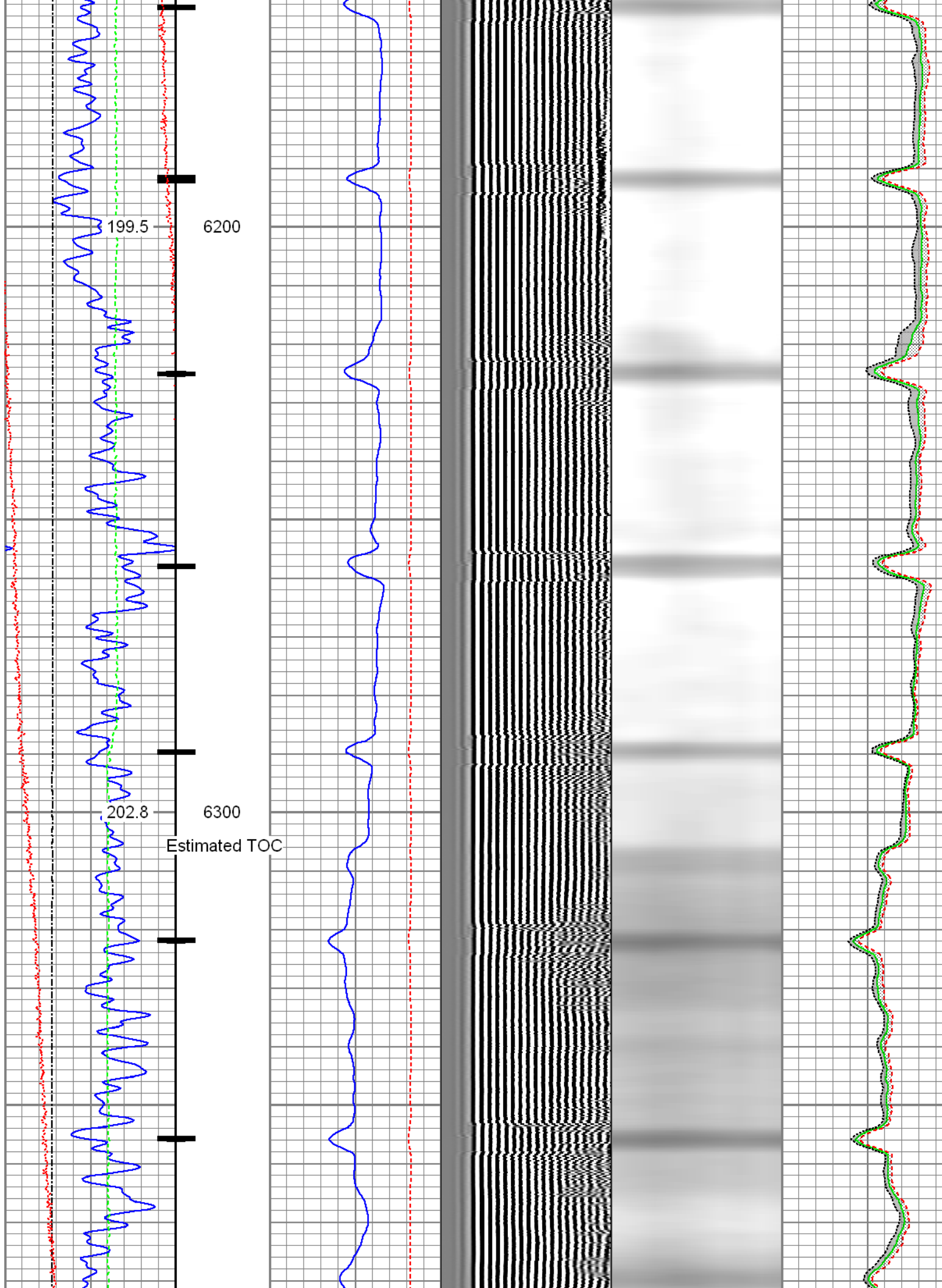


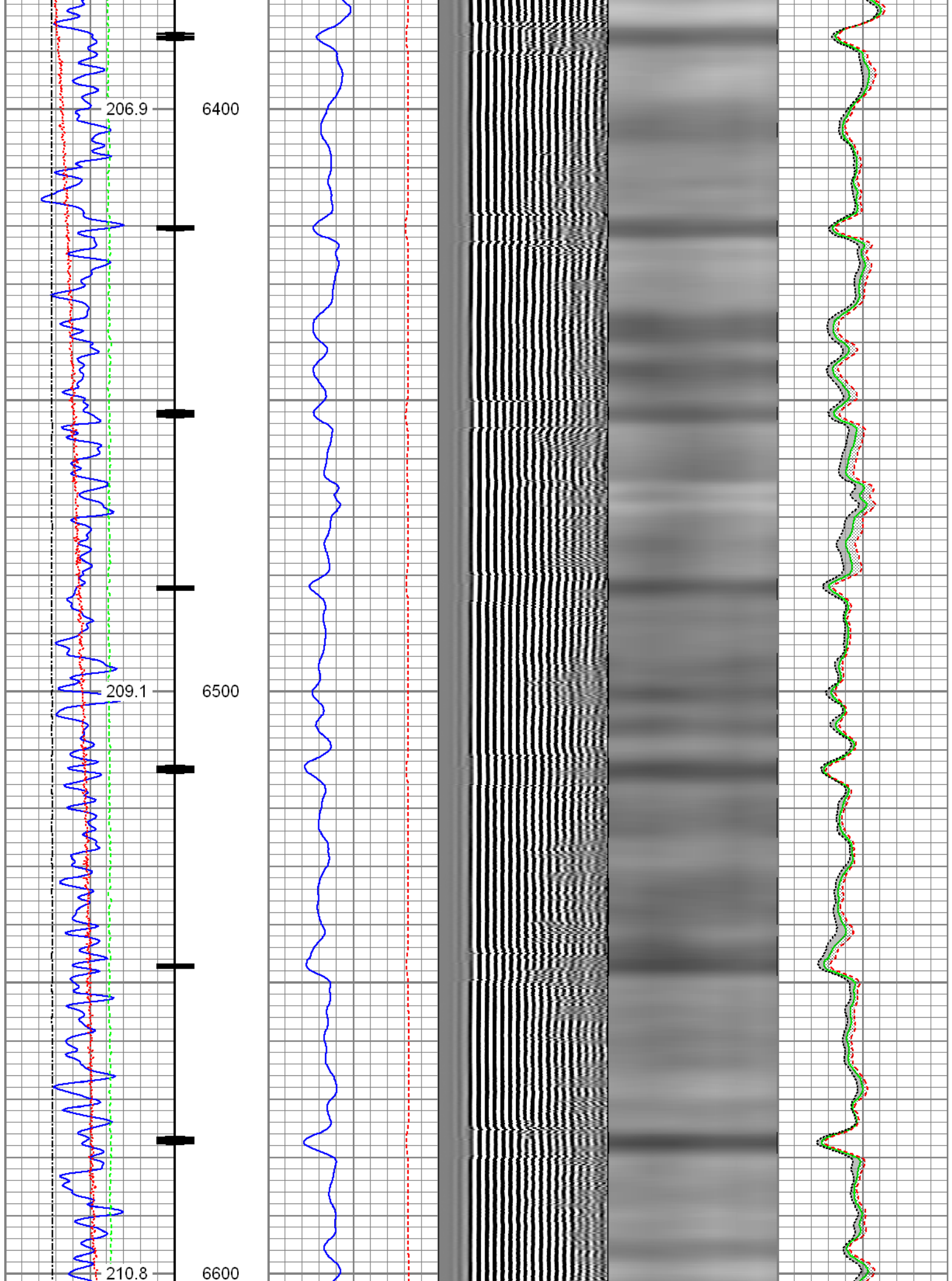
Database File: 0512307808_anadarko_acc0-terra-state 39_12-30-15_rbl.db
 Dataset Pathname: main2.2
 Presentation Format: radi_ver
 Dataset Creation: Mon Jan 04 11:40:24 2016 by Calc SCH 120430
 Charted by: Depth in Feet scaled 1:240

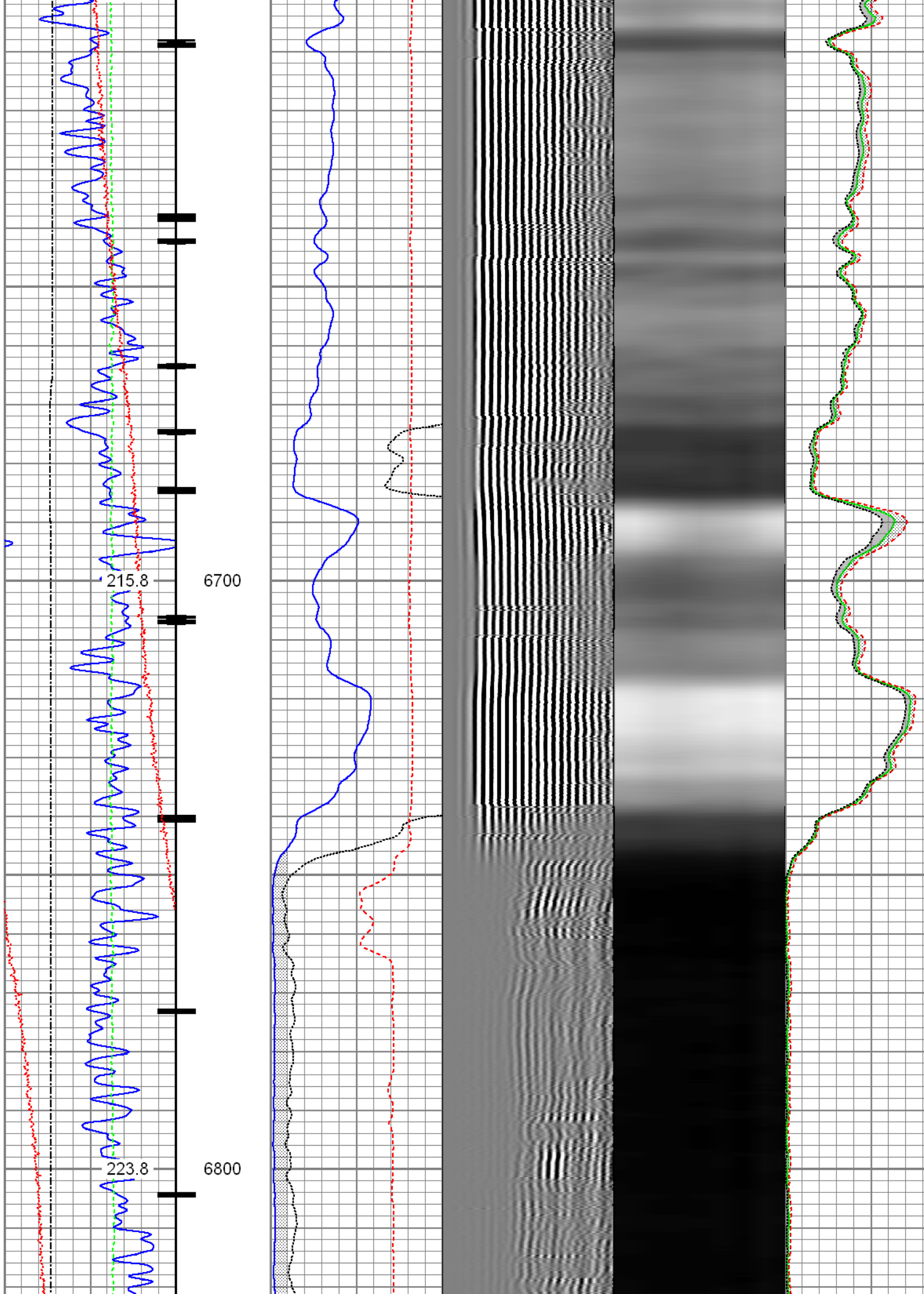
Gamma Ray 30 (GAPI) 130	3' Amplitude 0 (mV) 100	5' Variable Density Log 200 1200	Sector Map	Average Amplitude 0 100
Casing Collar Locator	3' Amplitude x 5 0 (mV) 20			Minimum Amplitude 0 100
Line Speed -150 (ft/min) 150	3' Travel Time 650 (usec) 150			Maximum Amplitude 0 100
Line Tension 0 (lb) 2000				
Temperature 0 (degF) 20				

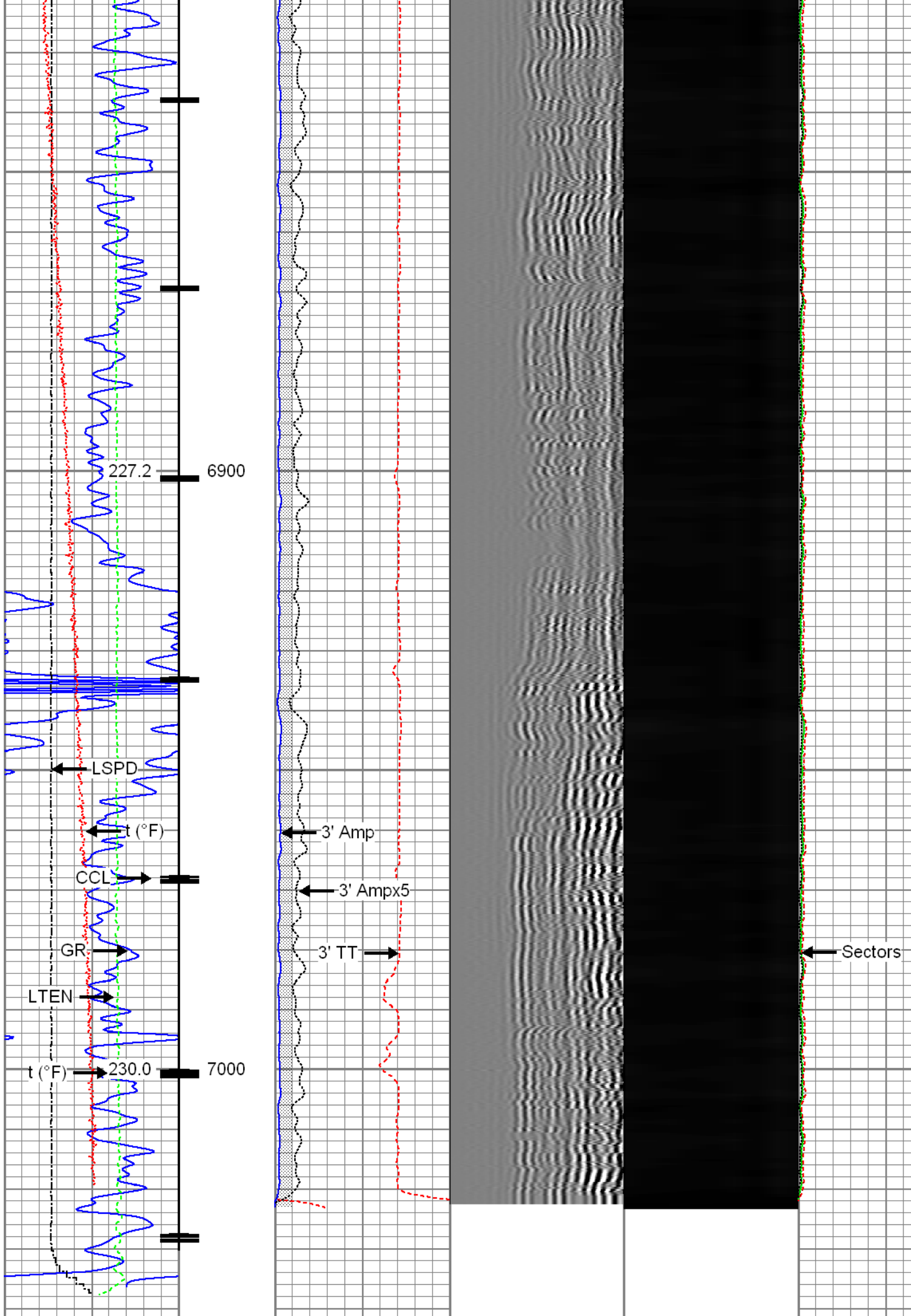











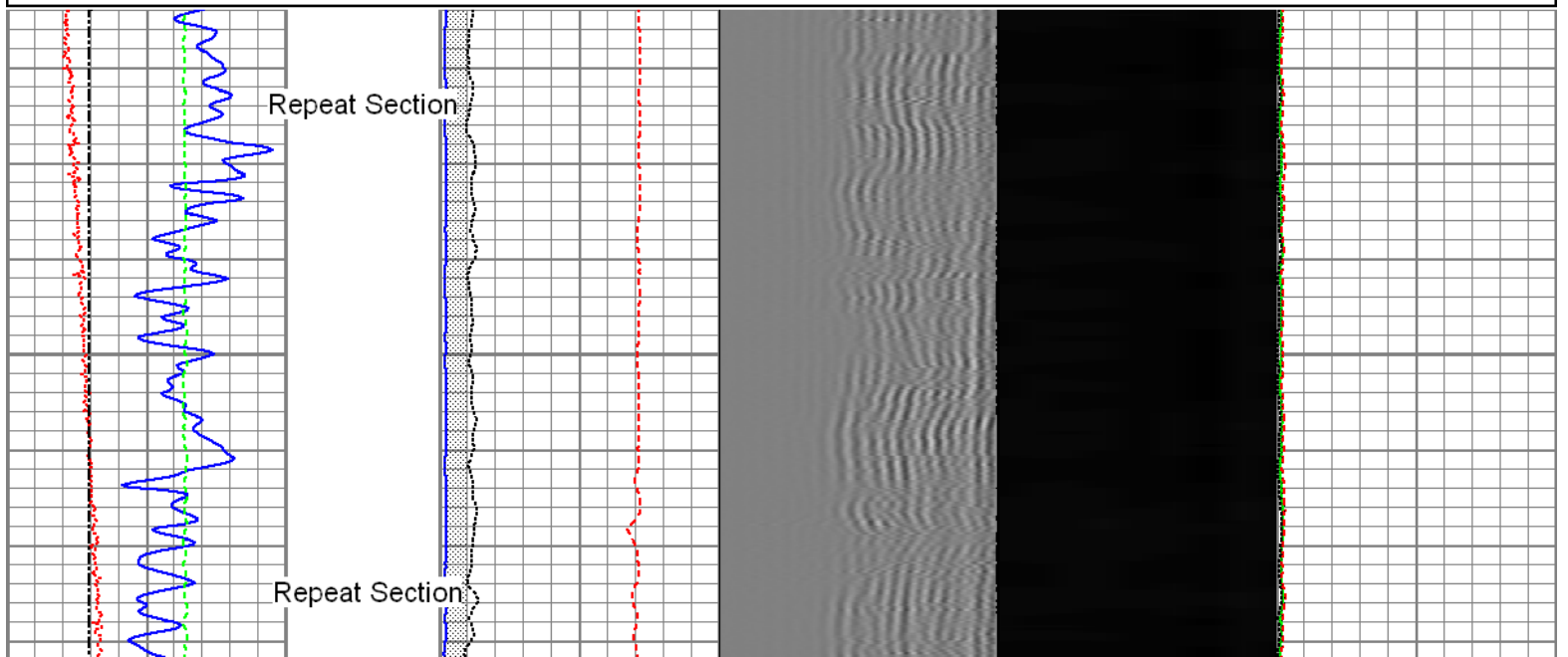


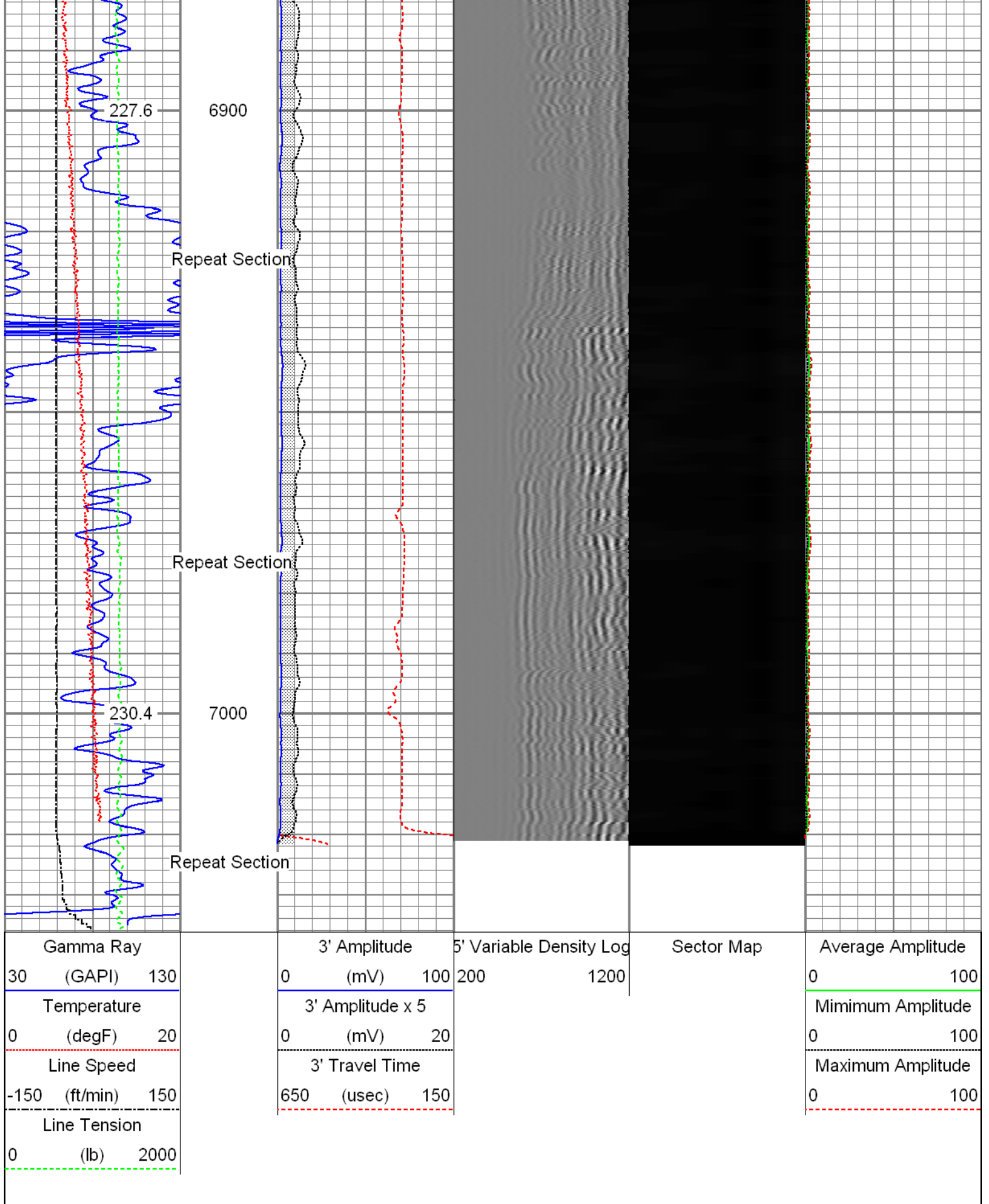
Gamma Ray 30 (GAPI) 130	3' Amplitude 0 (mV) 100	5' Variable Density Log 200 1200	Sector Map	Average Amplitude 0 100
Casing Collar Locator	3' Amplitude x 5 0 (mV) 20			Mimimum Amplitude 0 100
Line Speed -150 (ft/min) 150	3' Travel Time 650 (usec) 150			Maximum Amplitude 0 100
Line Tension 0 (lb) 2000				
Temperature 0 (degF) 20				

	<h2>Repeat Section</h2> <p>Recorded with 0 PSI Surface Induced Pressure</p>
--	---

Database File:	0512307808_anadarko_accoterra-state 39_12-30-15_rbl.db
Dataset Pathname:	repeat
Presentation Format:	radi_vert
Dataset Creation:	Wed Dec 30 14:06:56 2015 by Log 7.0 B1
Charted by:	Depth in Feet scaled 1:240

Gamma Ray 30 (GAPI) 130	3' Amplitude 0 (mV) 100	5' Variable Density Log 200 1200	Sector Map	Average Amplitude 0 100
Temperature 0 (degF) 20	3' Amplitude x 5 0 (mV) 20			Mimimum Amplitude 0 100
Line Speed -150 (ft/min) 150	3' Travel Time 650 (usec) 150			Maximum Amplitude 0 100
Line Tension 0 (lb) 2000				





Sensor	Offset (ft)	Schematic	Description	Len (ft)	OD (in)	Wt (lb)
			Titan 1-7/16" Assembled Electric Cable Head with 1" Fishing Neck	1.03	1.44	4.00

			Fishing Neck			
HeadVolt	20.94		Probe_IL_BS_Cent Probe 2-3/4" Inline Electrical Inline Bowspring Centralizer	2.88	2.75	10.00
Temp	18.17					
WV3FT	16.00		Probe_RADII-C-2-3/4" (FW1305-098) Probe 2-3/4" Sector Cement Bond Tool with Temperature Probe	9.19	2.75	105.00
WVFCAL	16.00					
WVFS1	16.00					
WVFS2	16.00					
WVFS3	16.00					
WVFS4	16.00					
WVFS5	16.00					
WVFS6	16.00					
WVFS7	16.00					
WVFS8	16.00					
WV5FT	15.00					
			Probe_IL_BS_Cent Probe 2-3/4" Inline Electrical Inline Bowspring Centralizer	2.88	2.75	10.00
CCL	7.38		CCL_LOG-Probe_SA_CCL (FW1307-076) Probe 2-3/4" Digital Six Magnet Logging CCL	2.66	2.75	35.00
DCCL	7.38					
			GR-Probe_SA_GR (FW1307-078) Probe 2-3/4" Scintillating Gamma Ray	3.33	2.75	55.00
GR	2.88		Probe_IL_BS_Cent Probe 2-3/4" Inline Electrical Inline Bowspring Centralizer	2.88	2.75	10.00

Dataset: 0512307808_Anadarko_Acco-Terra-State 39_12-30-15_RBL.db: field/well/run1/main2
 Total Length: 24.85 ft
 Total Weight: 229.00 lb
 O.D.: 2.75 in

Calibration Report

Database File: 0512307808_anadarko_accoterra-state 39_12-30-15_rbl.db

Gamma Ray Calibration Report

Serial Number: FW1307-078
 Tool Model: Probe_SA_GR
 Performed: Wed Dec 02 09:26:20 2015

Calibrator Value: 1.0 GAPI

Background Reading: 0.0 cps
 Calibrator Reading: 1.0 cps

Sensitivity: 0.6300 GAPI/cps

Segmented Cement Bond Log Calibration Report

Serial Number: FW1305-098
 Tool Model: 2-3/4"

Calibration Casing Diameter: 4.500 in
 Calibration Depth: -0.002 ft

Master Calibration, performed Mon Jan 04 11:40:21 2016:

	Raw (v)		Calibrated (mv)		Results	
	Zero	Cal	Zero	Cal	Gain	Offset
3'	0.008	0.517	0.800	81.196	157.950	-0.417
CAL	0.007	0.724				
5'	0.012	0.372	0.800	81.196	223.719	-1.963
SUM						
S1	0.009	0.493	0.000	100.000	206.626	-1.890
S2	0.009	0.551	0.000	100.000	184.634	-1.670
S3	0.008	0.634	0.000	100.000	159.626	-1.213
S4	0.007	0.647	0.000	100.000	156.412	-1.132
S5	0.008	0.581	0.000	100.000	174.427	-1.366
S6	0.008	0.516	0.000	100.000	196.920	-1.641
S7	0.008	0.478	0.000	100.000	212.658	-1.608
S8	0.010	0.473	0.000	100.000	215.913	-2.099

Internal Reference Calibration, performed Wed Dec 30 13:01:11 2015:

	Raw (v)		Calibrated (v)		Results	
	Zero	Cal	Zero	Cal	Gain	Offset
CAL	0.007	0.723	0.007	0.724	1.002	-0.000

Air Zero Calibration, performed Wed Dec 30 13:00:22 2015:

	Raw (v)		Calibrated (v)		Results	
	Zero		Zero		Offset	
3'	0.006		0.000		0.000	
5'	0.007		0.000		0.000	
SUM						
S1	0.007		0.000		-0.000	
S2	0.007		0.000		-0.000	
S3	0.007		0.000		-0.000	

S4	0.007	0.000	-0.000
S5	0.007	0.000	-0.000
S6	0.007	0.000	0.000
S7	0.006	0.000	0.000
S8	0.007	0.000	-0.000



Company	Kerr-McGee Oil & Gas OnShore L.P.
Well	Acco-Terra-State 39
Field	Wattenberg
County	Weld
State	Colorado