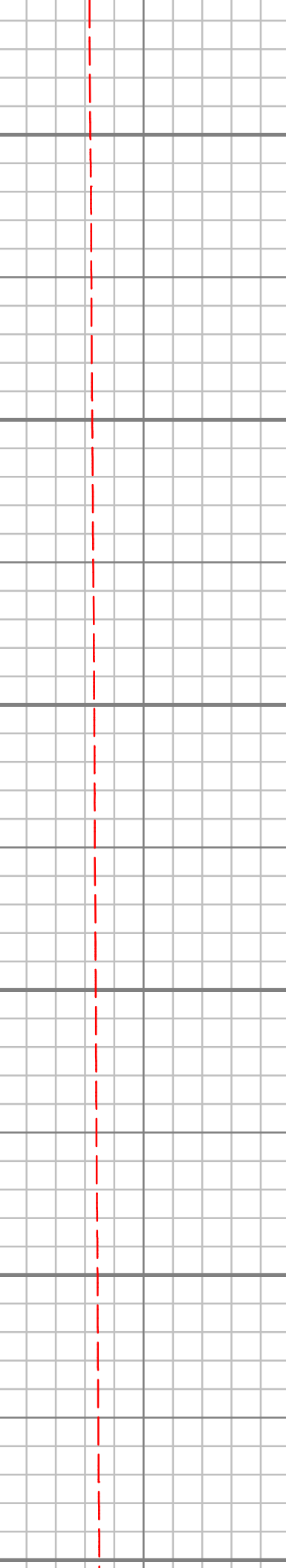
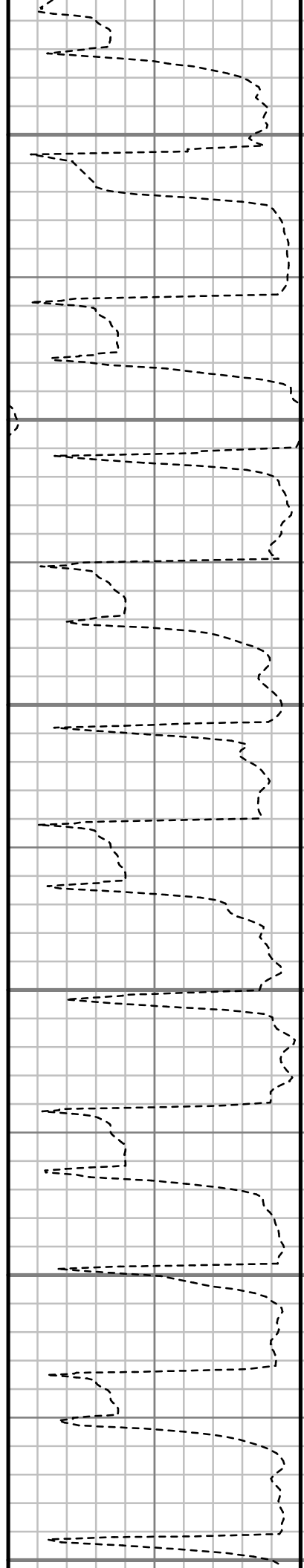
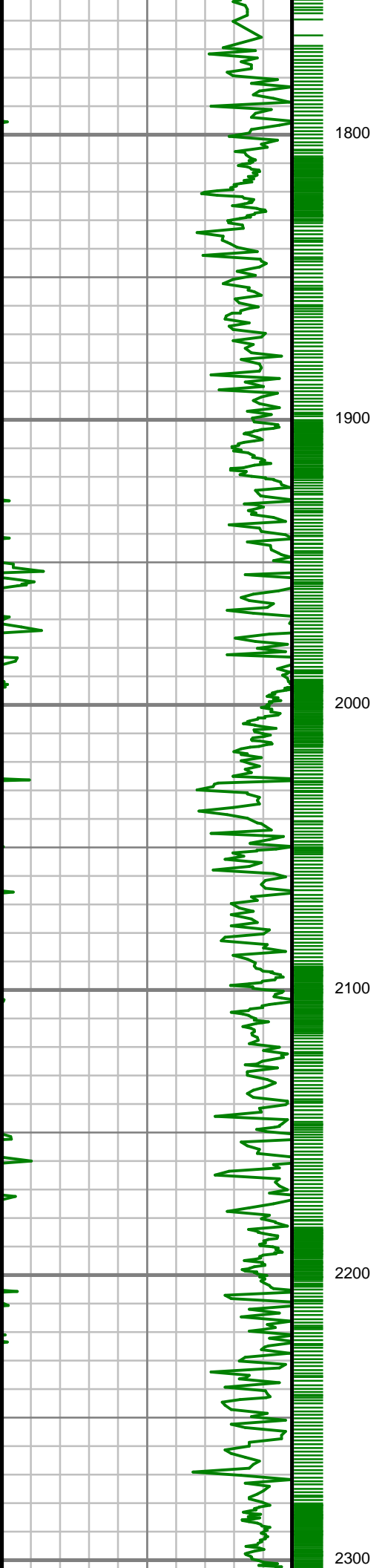


[illegible]

All interpretations are opinions based on inferences from electrical or other measurements and we cannot, and do not guarantee the accuracy or correctness of any interpretations, and we shall not, except in the case of gross or willful negligence on our part, be liable or responsible for any loss, costs, damages or expenses incurred or sustained by anyone resulting from any interpretation made by any of our officers, agents or employees. These interpretations are also subject to our general terms and conditions as set out in our current price schedule.

EXTRACTION OIL & GAS JOHNSON TRUST 4 WATTENBERG FIELD WELD COUNTY, COLORADO API # 05-123-42320-00			
Gamma Ray (GR) 0 Unit = aapi 150	MEASURED DEPTH 1:600 (ft)	Rate of Penetration (ROP) 0 Unit = ft/hr 1000	Tool Temperature (T-TEMP) 0 Unit = °F 300
			S: 15 MD: 1664.00 ft Inc: 6.94 deg Az: 68.92 deg TVD: 1662.52 ft



S: 16 MD: 1758.00 ft
Inc: 7.91 deg Az: 67.71
deg TVD: 1755.73 ft

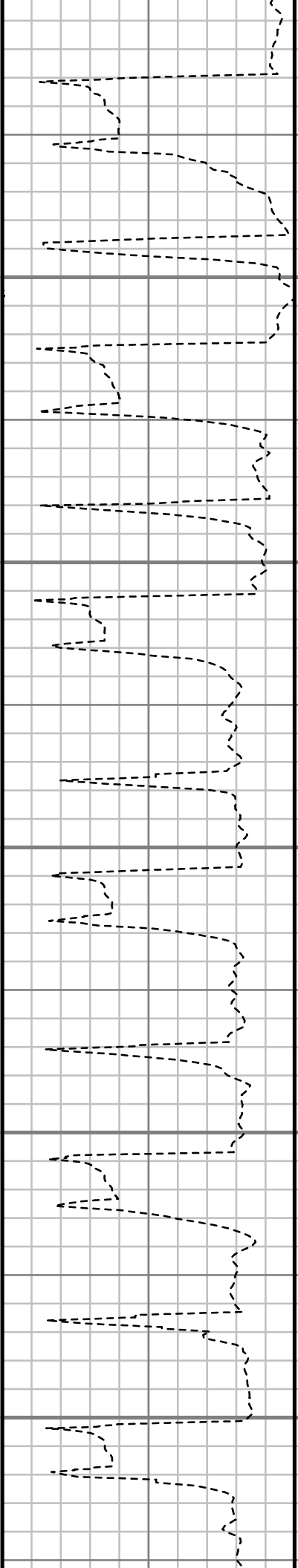
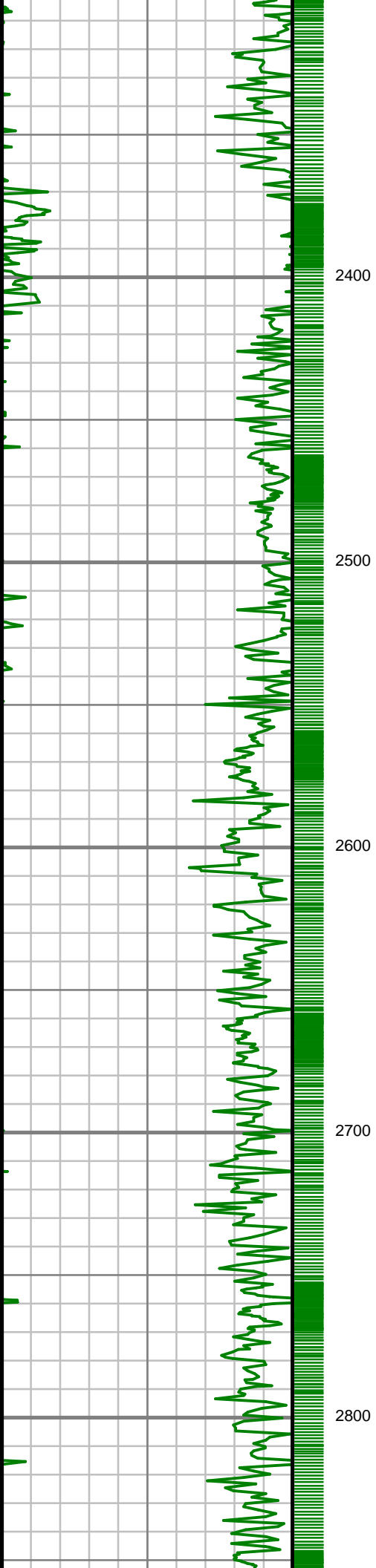
S: 17 MD: 1853.00 ft
Inc: 9.96 deg Az: 66.59
deg TVD: 1849.57 ft

S: 18 MD: 1947.00 ft
Inc: 12.49 deg Az:
70.07 deg TVD:
1941.77 ft

S: 19 MD: 2042.00 ft
Inc: 14.57 deg Az:
72.01 deg TVD:
2034.13 ft

S: 20 MD: 2136.00 ft
Inc: 16.43 deg Az:
72.42 deg TVD:
2124.70 ft

S: 21 MD: 2231.00 ft
Inc: 18.07 deg Az:
72.48 deg TVD:
2215.43 ft



S: 22 MD: 2326.00 ft
Inc: 17.92 deg Az:
71.99 deg TVD:
2305.78 ft

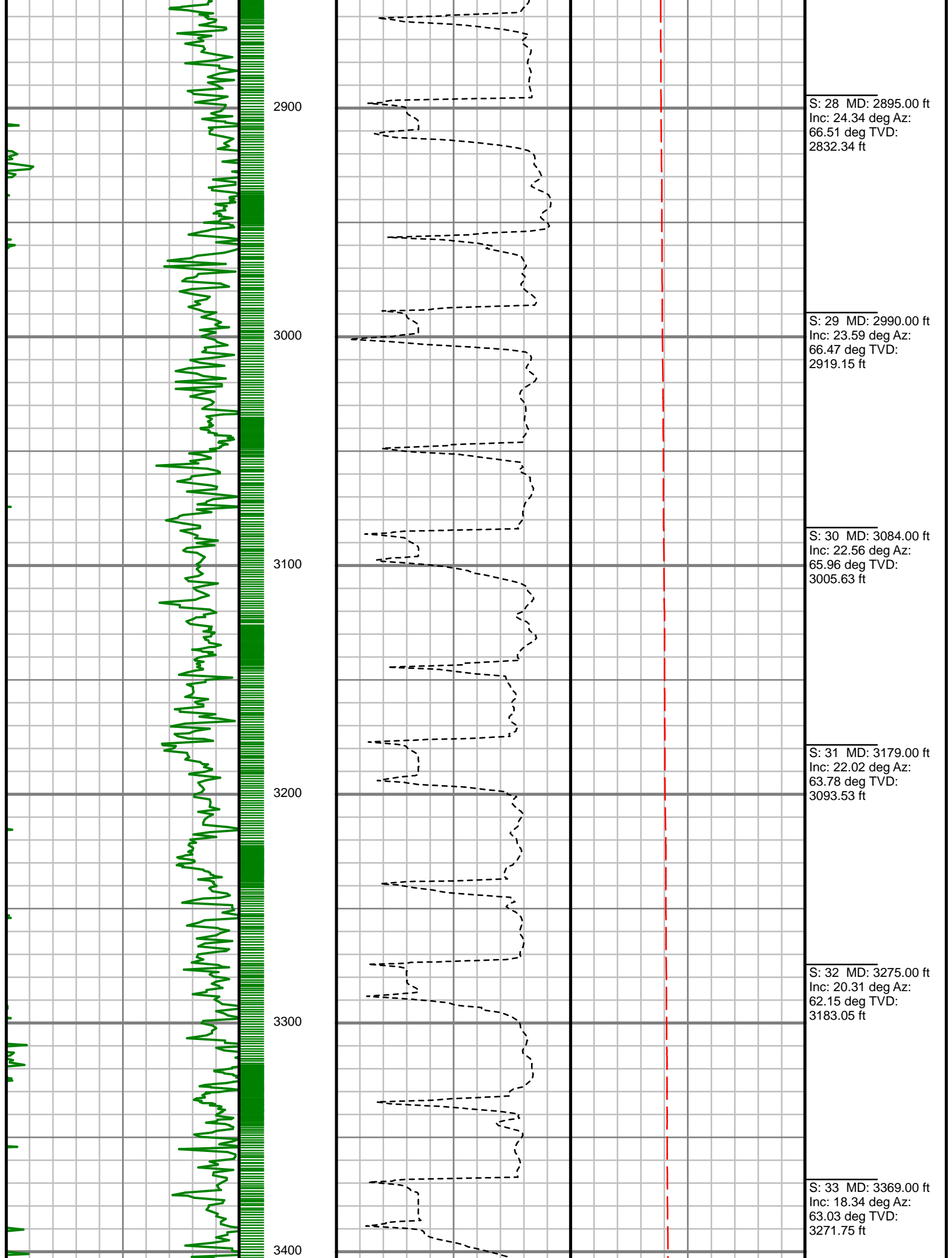
S: 23 MD: 2421.00 ft
Inc: 19.57 deg Az:
68.72 deg TVD:
2395.74 ft

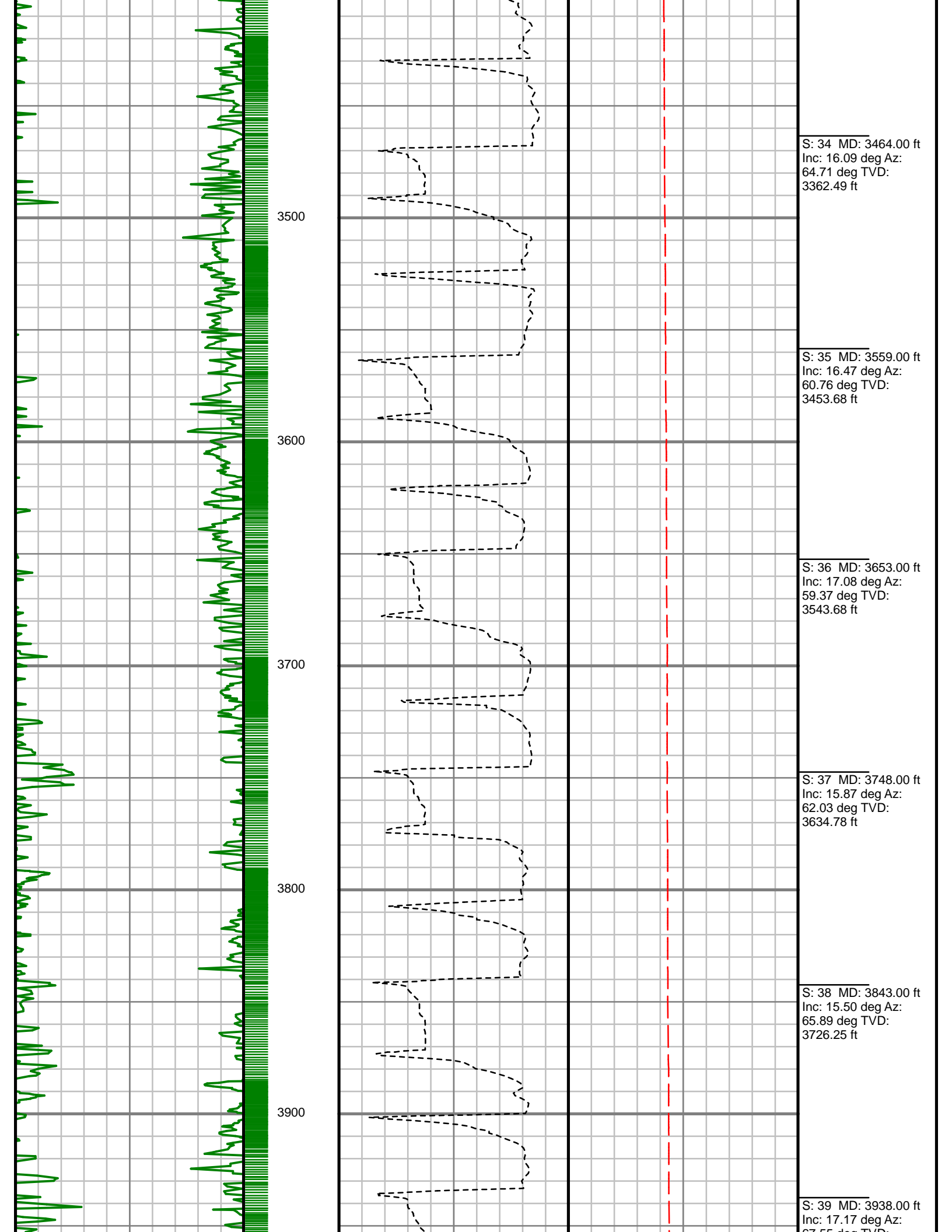
S: 24 MD: 2516.00 ft
Inc: 22.23 deg Az:
70.18 deg TVD:
2484.48 ft

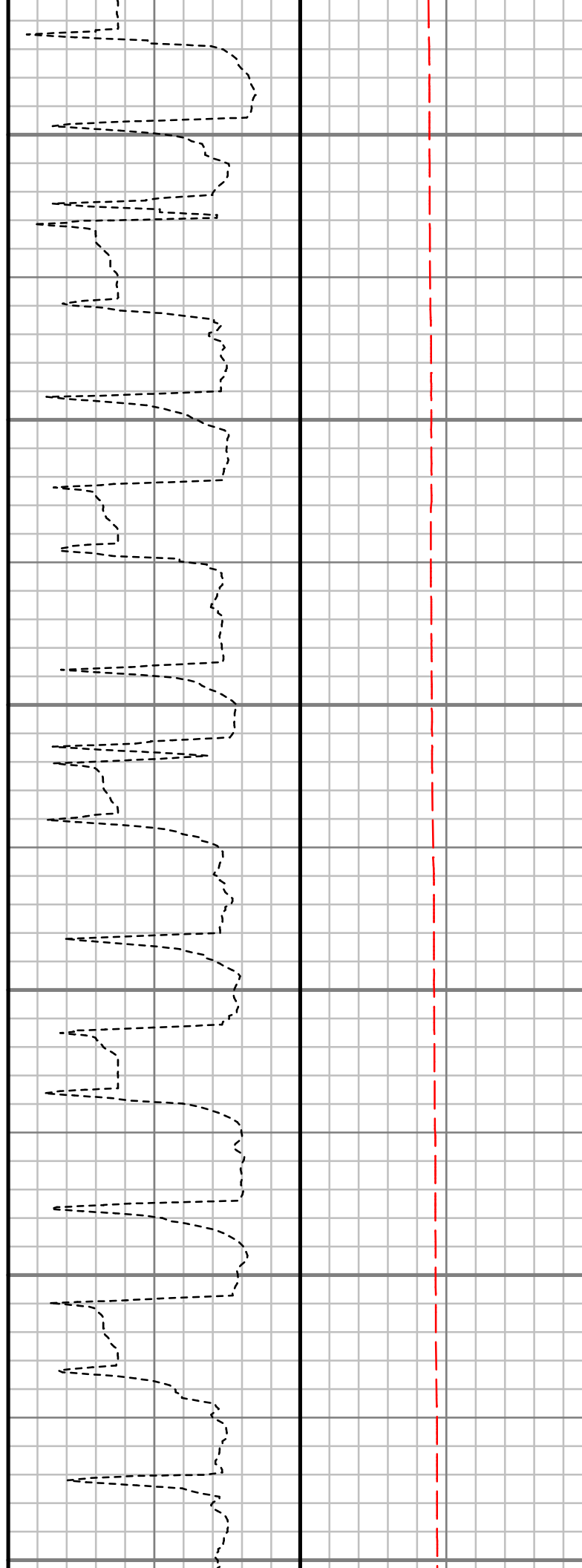
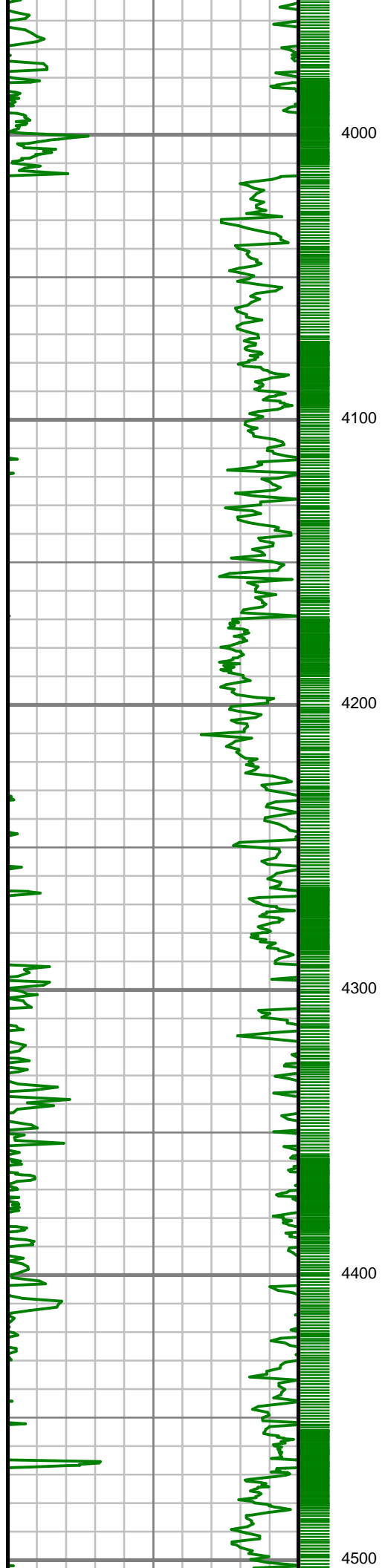
S: 25 MD: 2611.00 ft
Inc: 22.99 deg Az:
68.87 deg TVD:
2572.18 ft

S: 26 MD: 2706.00 ft
Inc: 23.22 deg Az:
68.11 deg TVD:
2659.56 ft

S: 27 MD: 2800.00 ft
Inc: 24.04 deg Az:
67.05 deg TVD:
2745.68 ft







67.55 deg TVD:
3817.41 ft

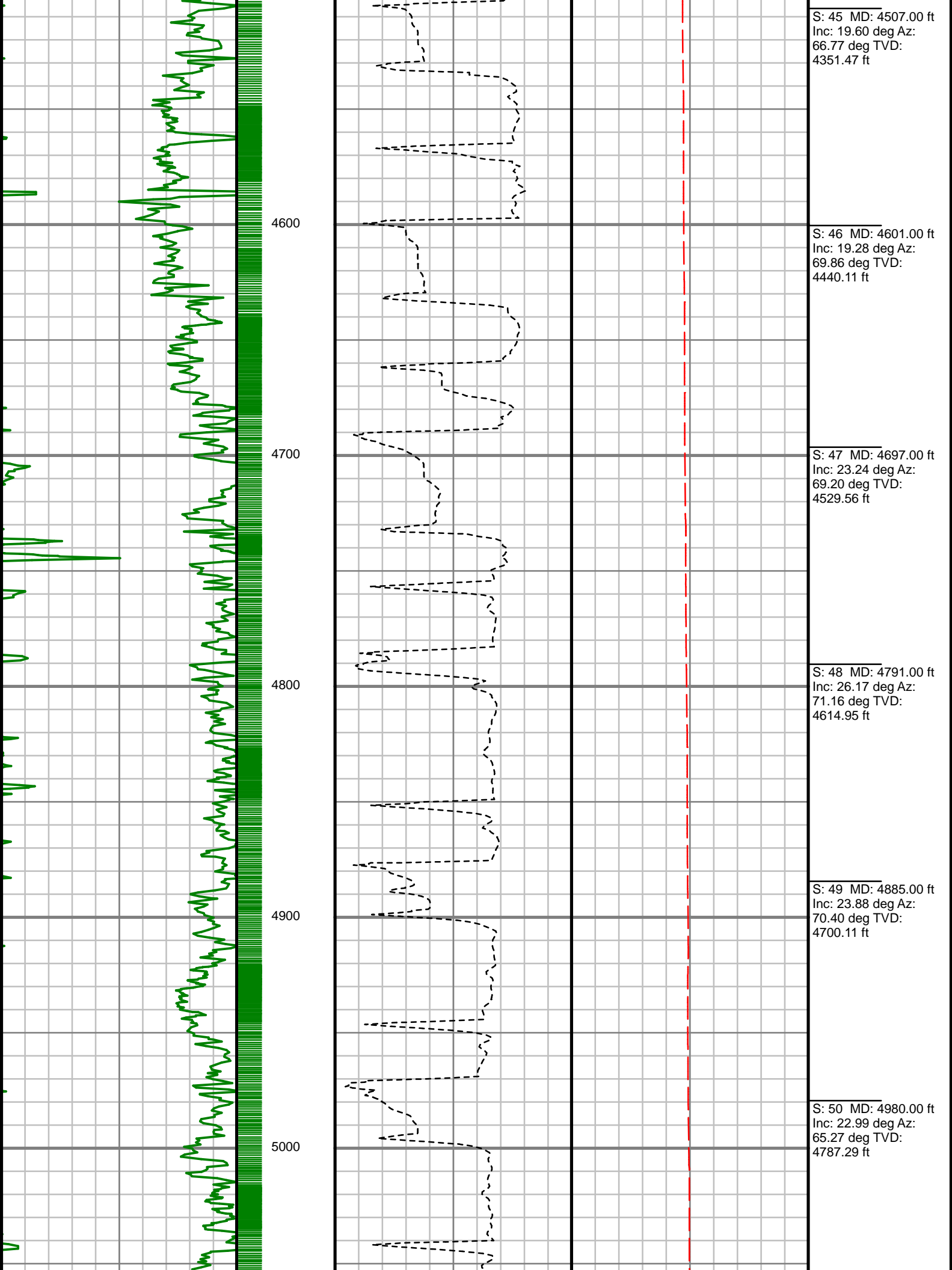
S: 40 MD: 4033.00 ft
Inc: 18.55 deg Az:
68.41 deg TVD:
3907.83 ft

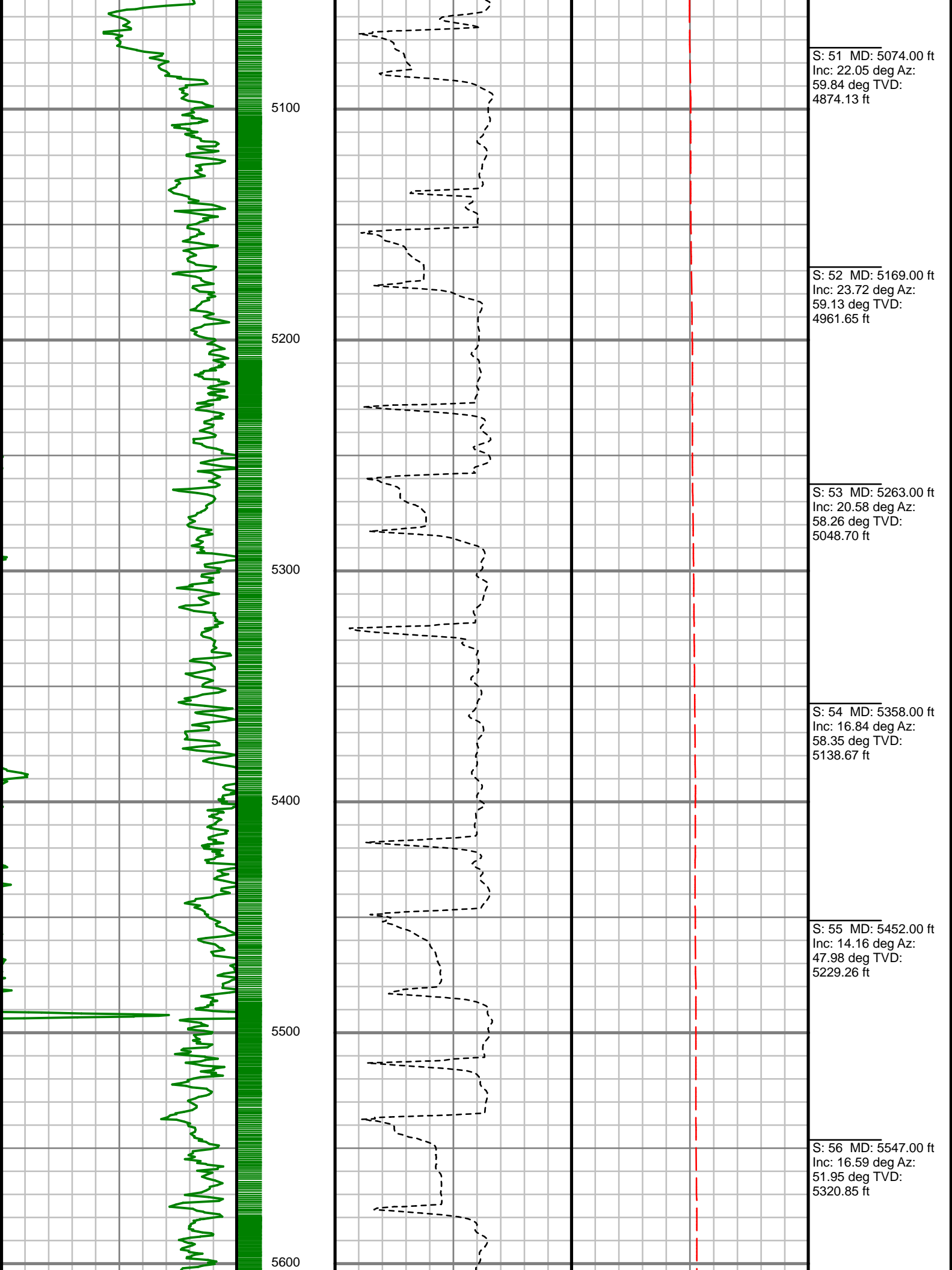
S: 41 MD: 4127.00 ft
Inc: 21.34 deg Az:
69.59 deg TVD:
3996.18 ft

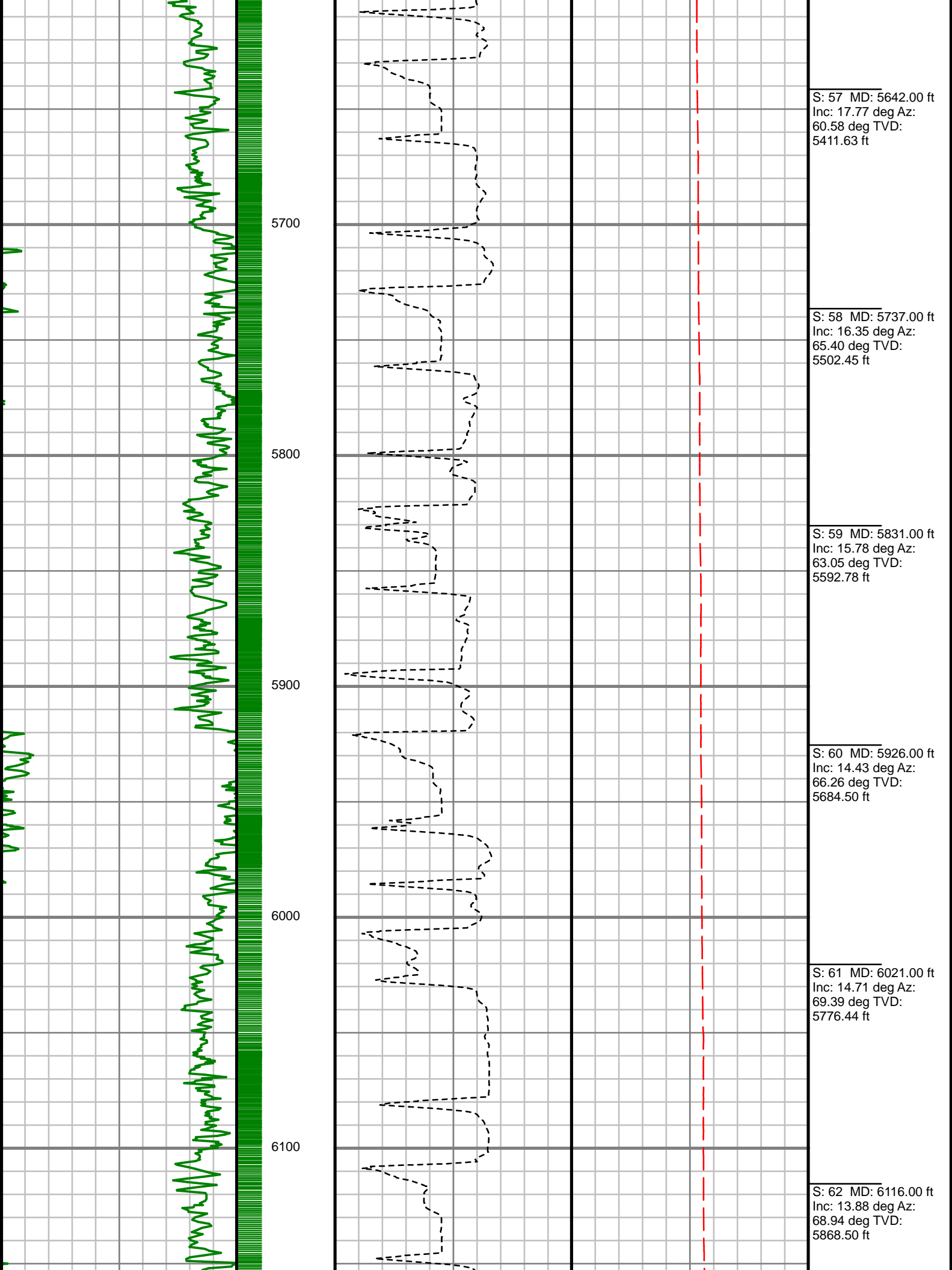
S: 42 MD: 4222.00 ft
Inc: 21.87 deg Az:
69.12 deg TVD:
4084.51 ft

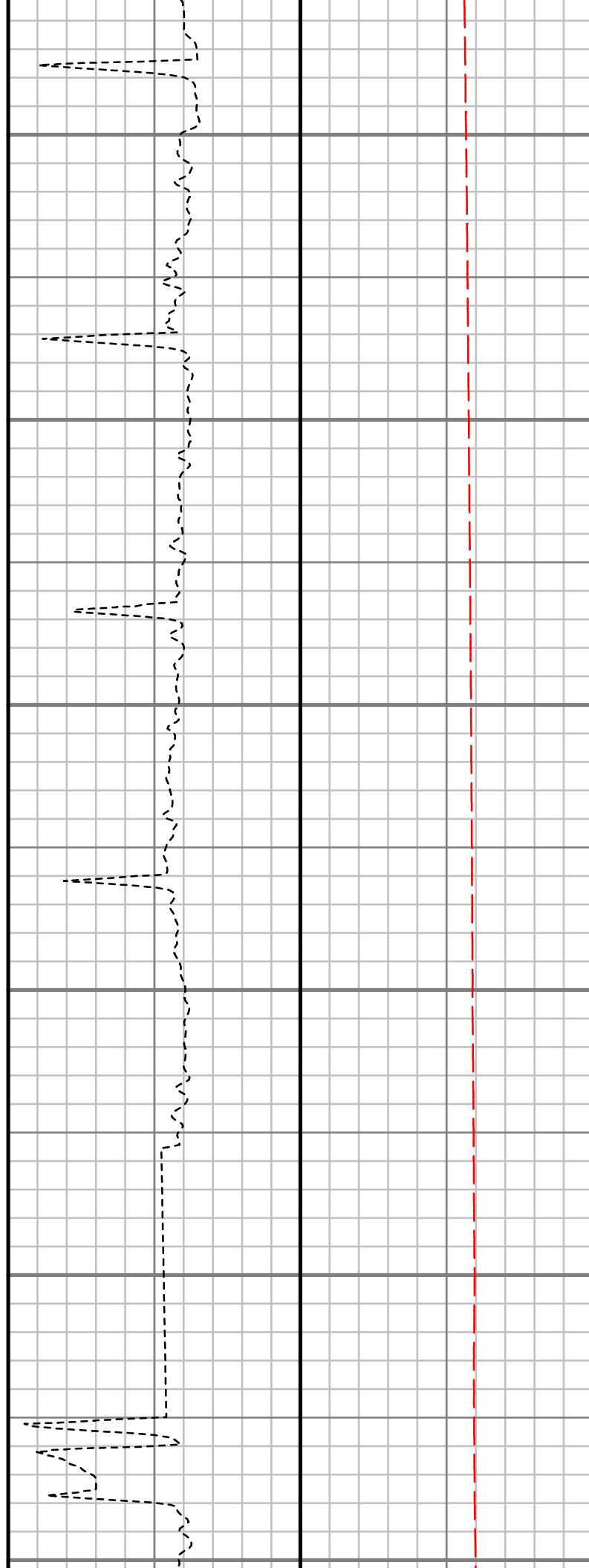
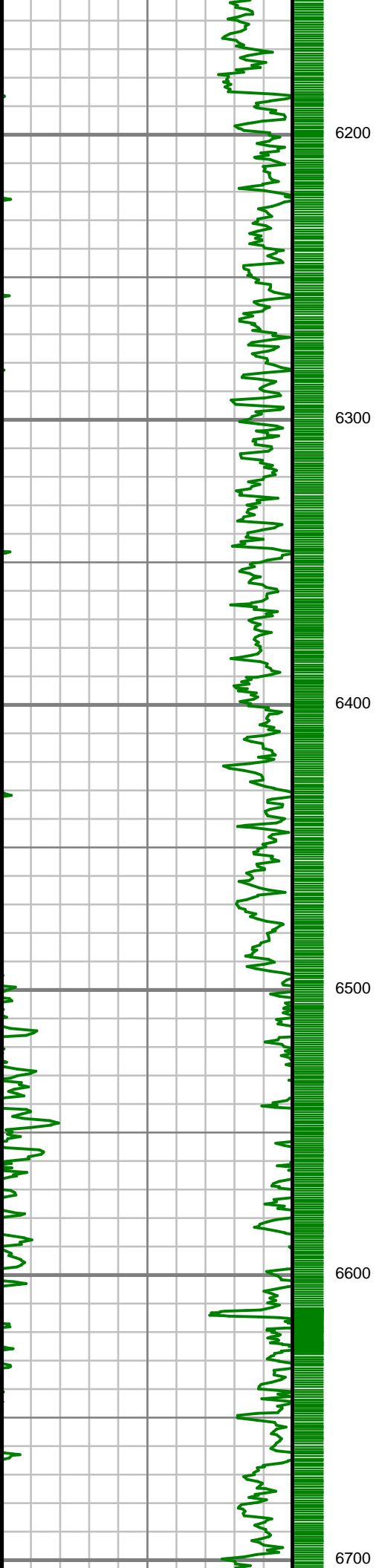
S: 43 MD: 4317.00 ft
Inc: 20.91 deg Az:
70.75 deg TVD:
4172.96 ft

S: 44 MD: 4411.00 ft
Inc: 19.81 deg Az:
68.03 deg TVD:
4261.09 ft









S: 63 MD: 6211.00 ft
Inc: 14.92 deg Az:
65.03 deg TVD:
5960.52 ft

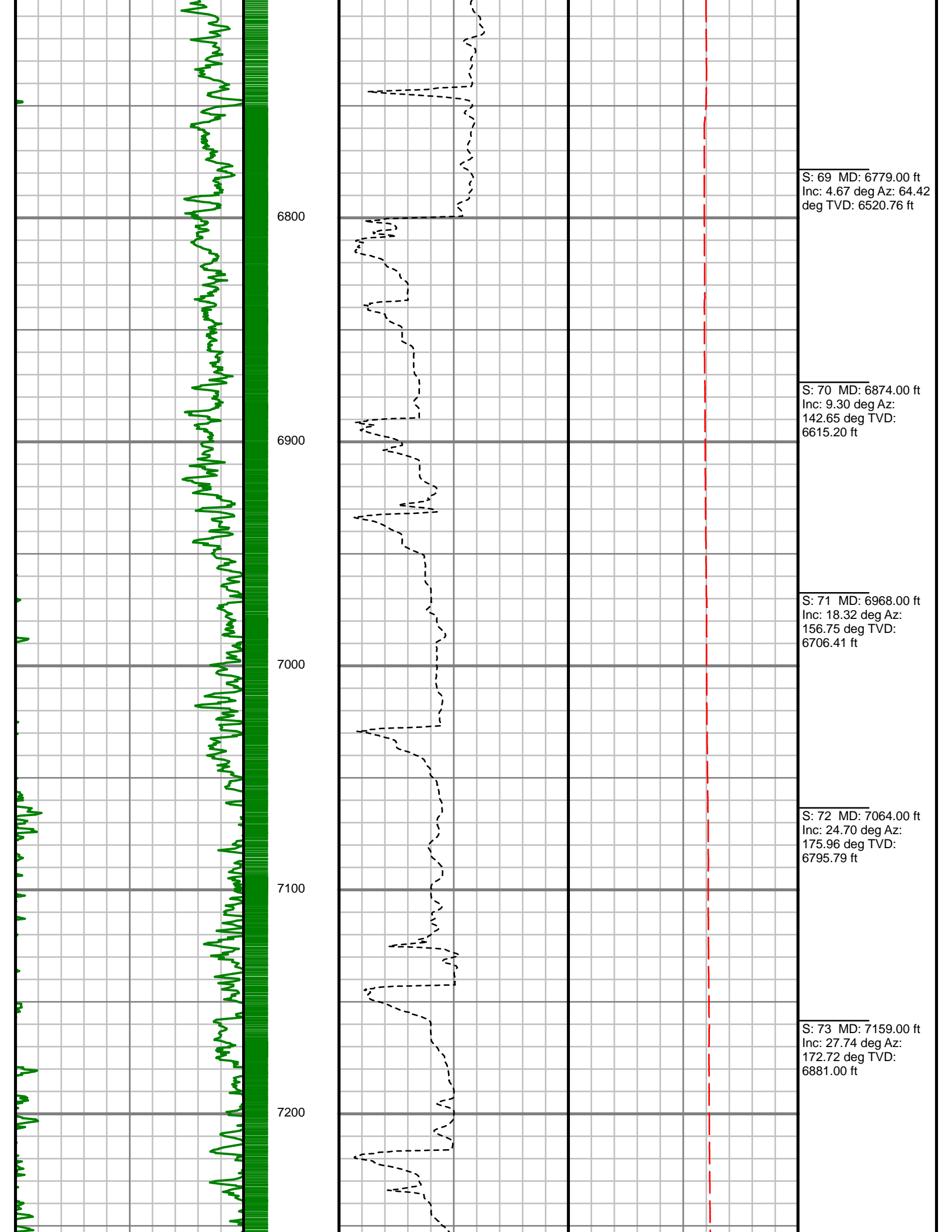
S: 64 MD: 6306.00 ft
Inc: 12.21 deg Az:
63.54 deg TVD:
6052.86 ft

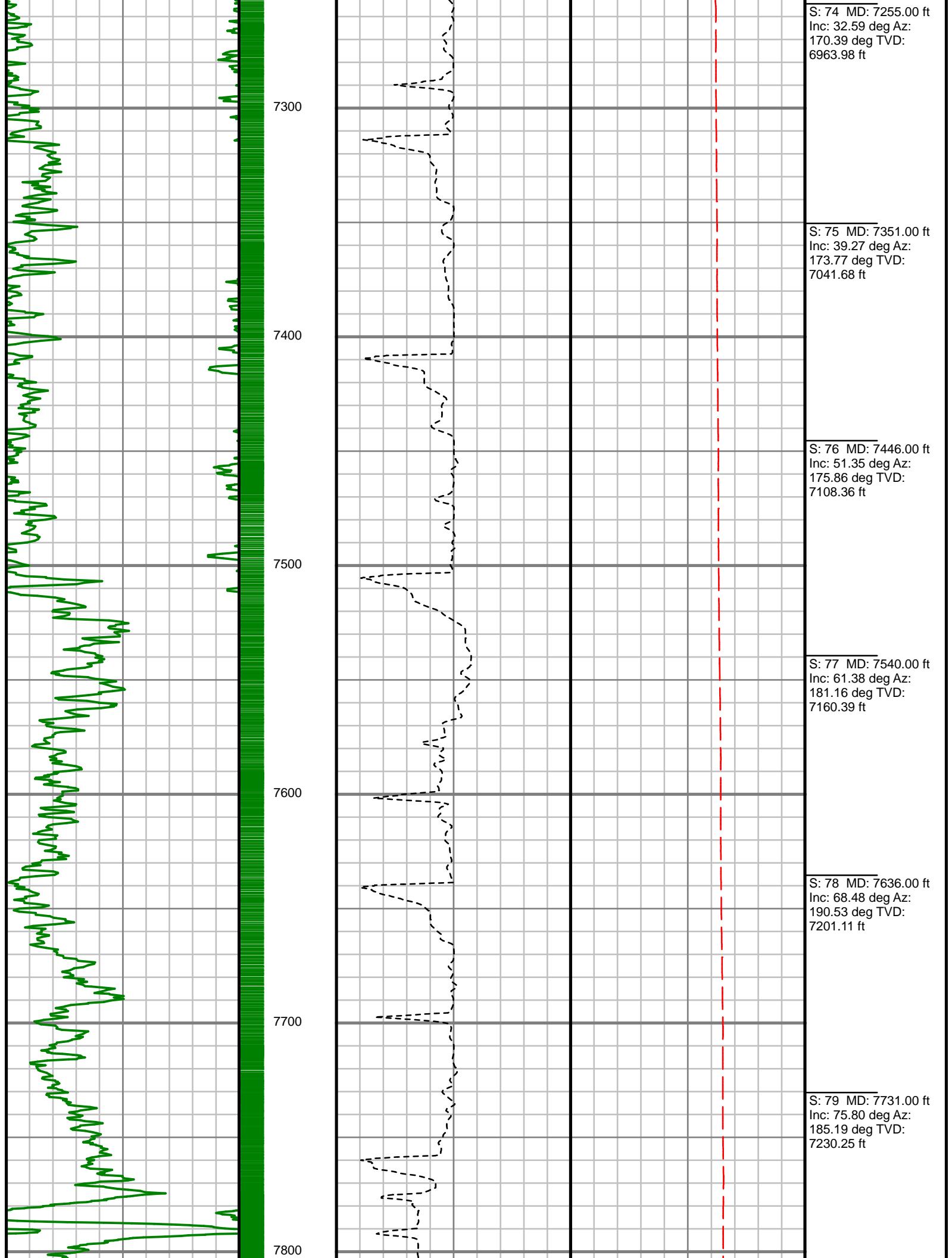
S: 65 MD: 6401.00 ft
Inc: 10.51 deg Az:
57.56 deg TVD:
6146.00 ft

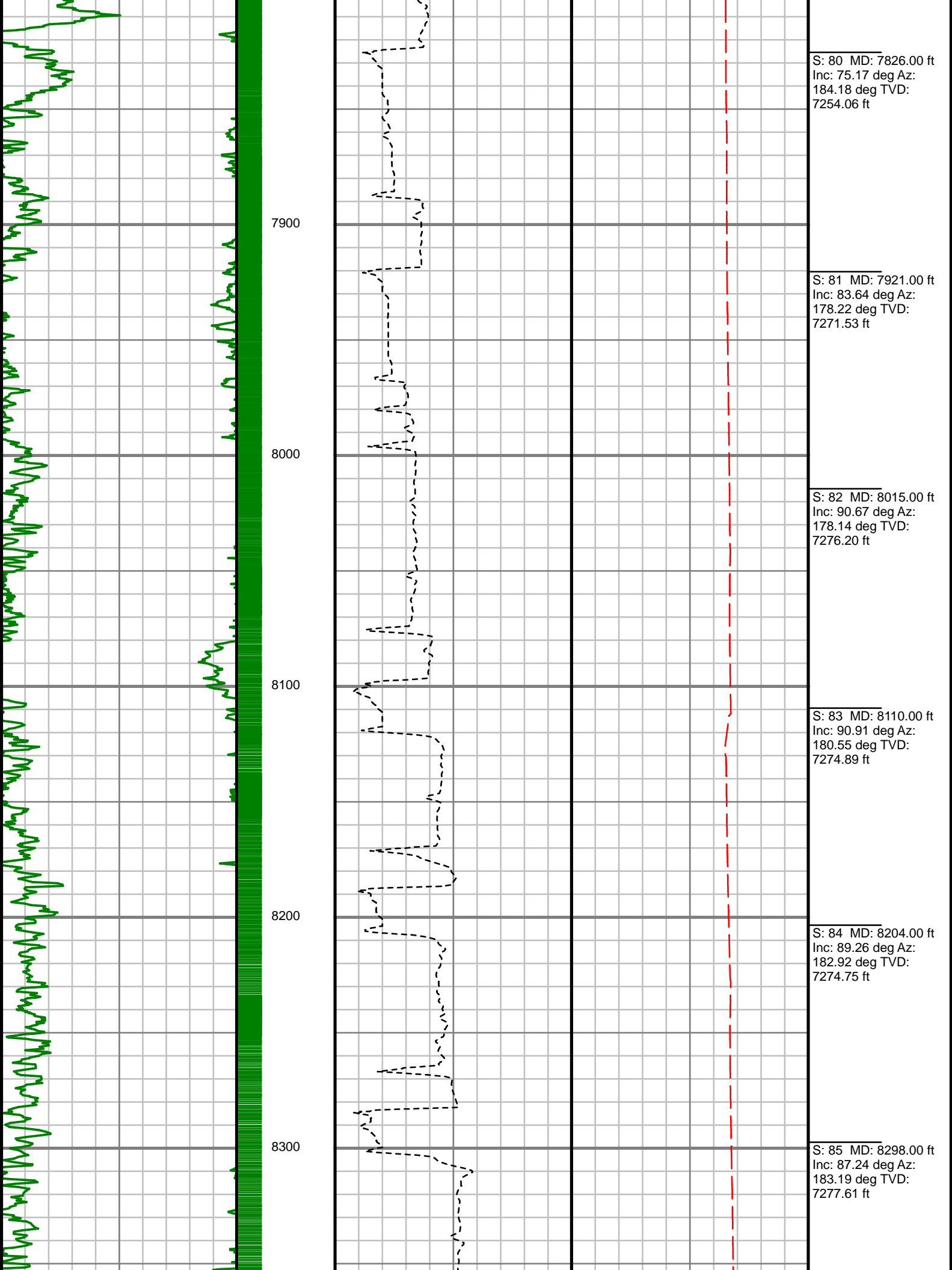
S: 66 MD: 6495.00 ft
Inc: 9.21 deg Az: 55.48
deg TVD: 6238.61 ft

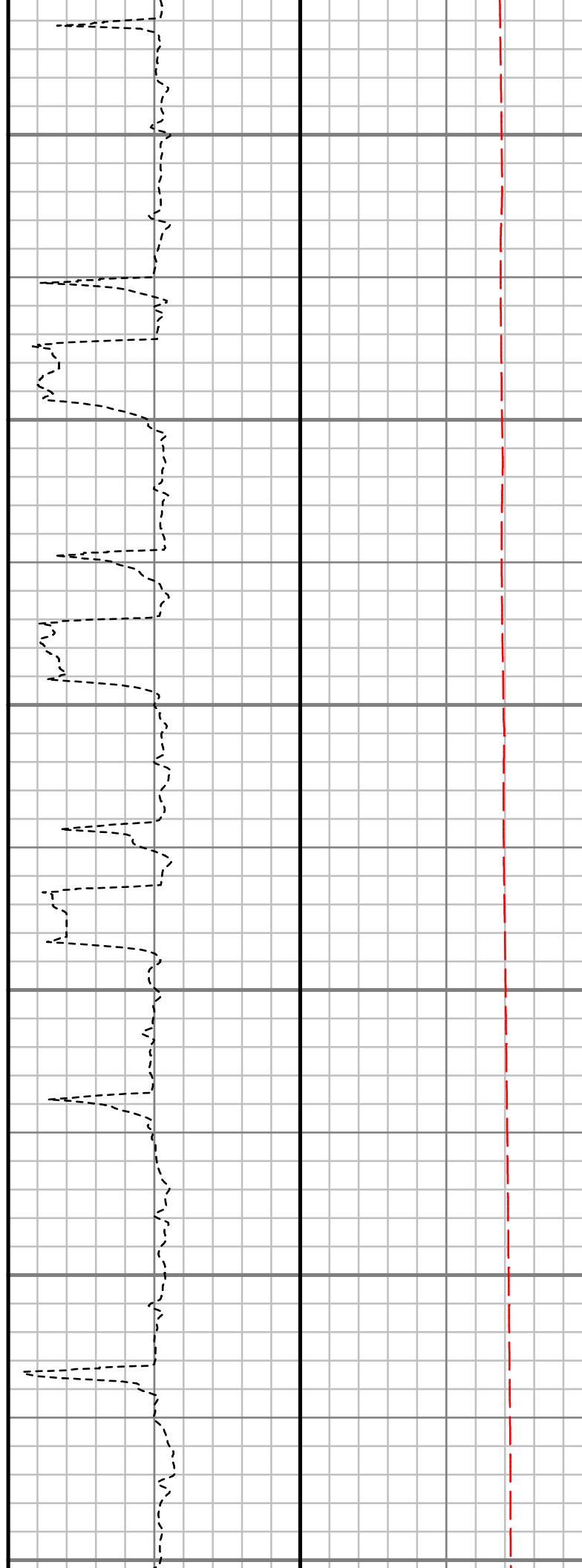
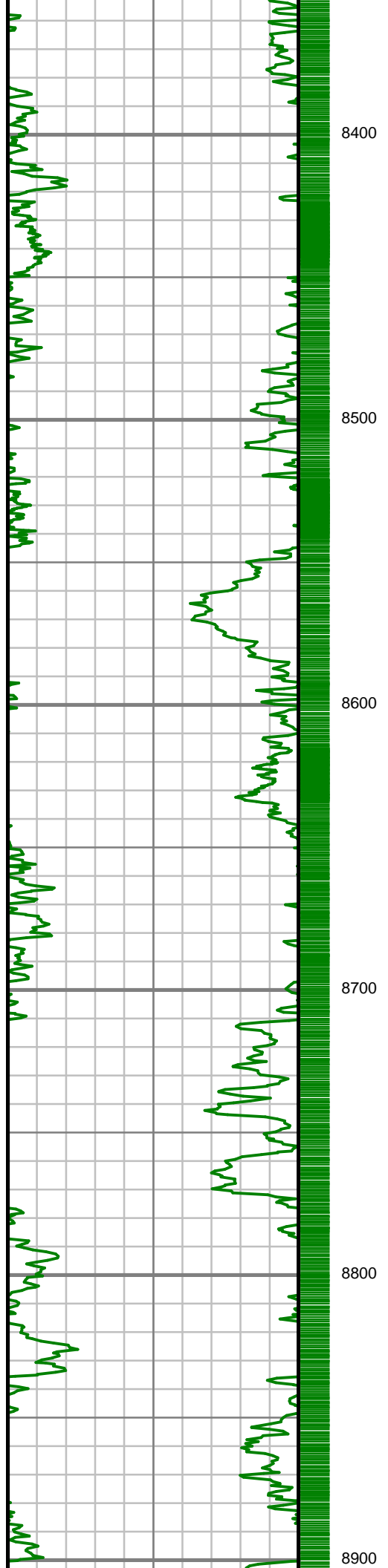
S: 67 MD: 6589.00 ft
Inc: 7.73 deg Az: 56.11
deg TVD: 6331.58 ft

S: 68 MD: 6684.00 ft
Inc: 4.29 deg Az: 72.14
deg TVD: 6426.05 ft









S: 86 MD: 8393.00 ft
Inc: 87.49 deg Az:
183.39 deg TVD:
7281.98 ft

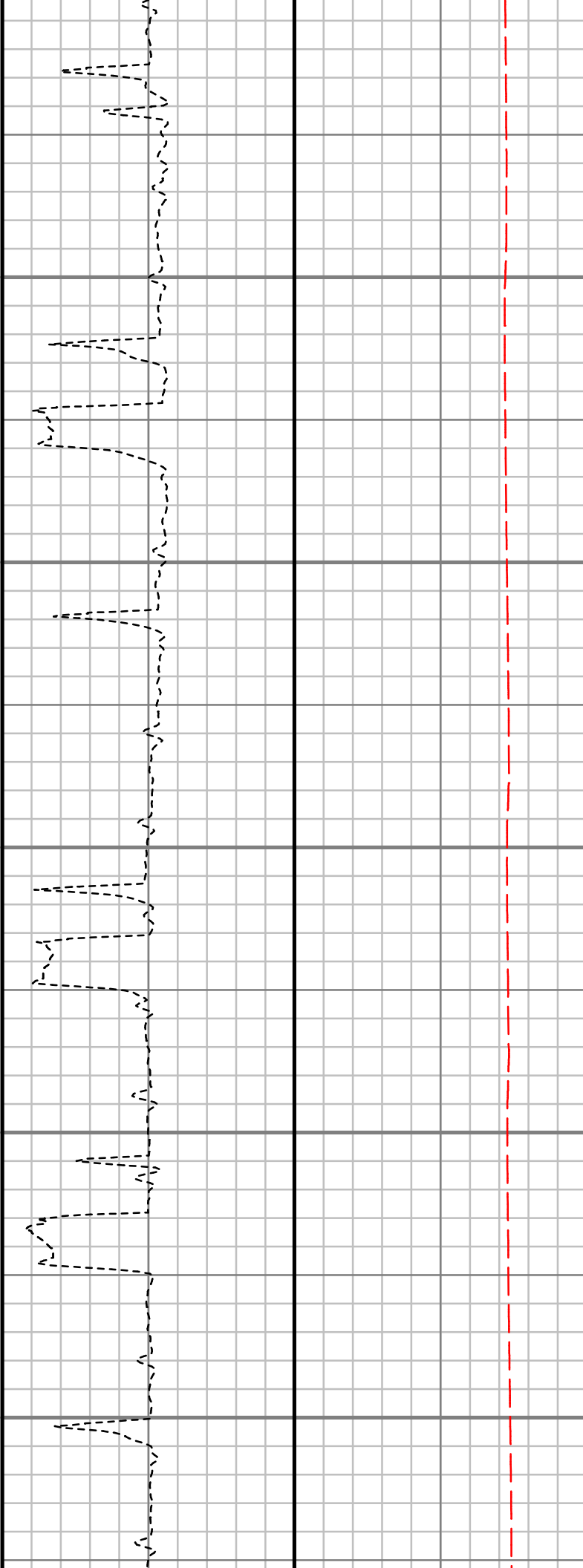
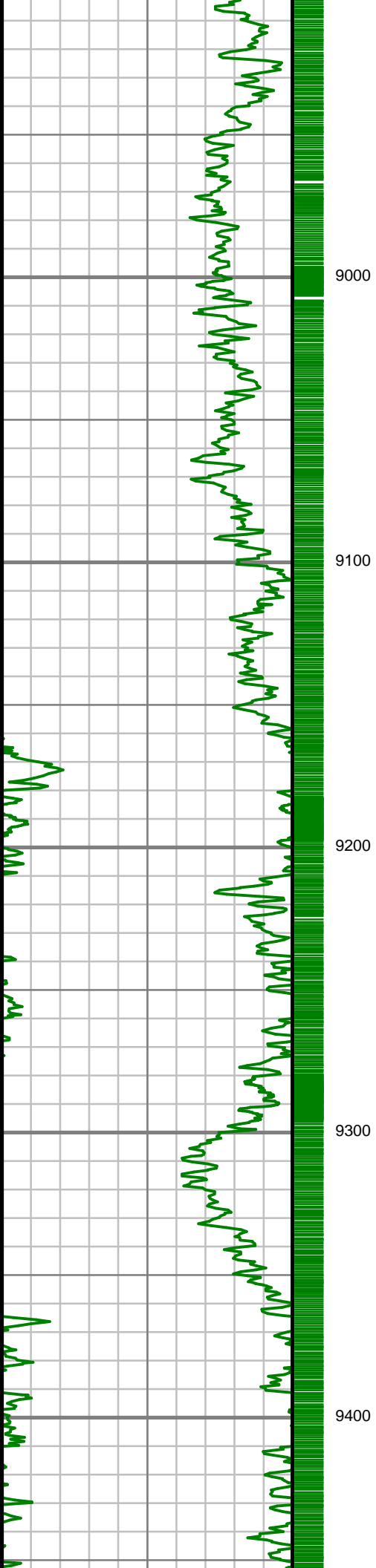
S: 87 MD: 8488.00 ft
Inc: 86.23 deg Az:
182.31 deg TVD:
7287.18 ft

S: 88 MD: 8583.00 ft
Inc: 86.71 deg Az:
180.60 deg TVD:
7293.03 ft

S: 89 MD: 8678.00 ft
Inc: 89.12 deg Az:
178.71 deg TVD:
7296.48 ft

S: 90 MD: 8773.00 ft
Inc: 89.23 deg Az:
179.26 deg TVD:
7297.85 ft

S: 91 MD: 8867.00 ft
Inc: 89.19 deg Az:
179.17 deg TVD:
7299.15 ft



S: 92 MD: 8962.00 ft
Inc: 88.96 deg Az:
179.59 deg TVD:
7300.68 ft

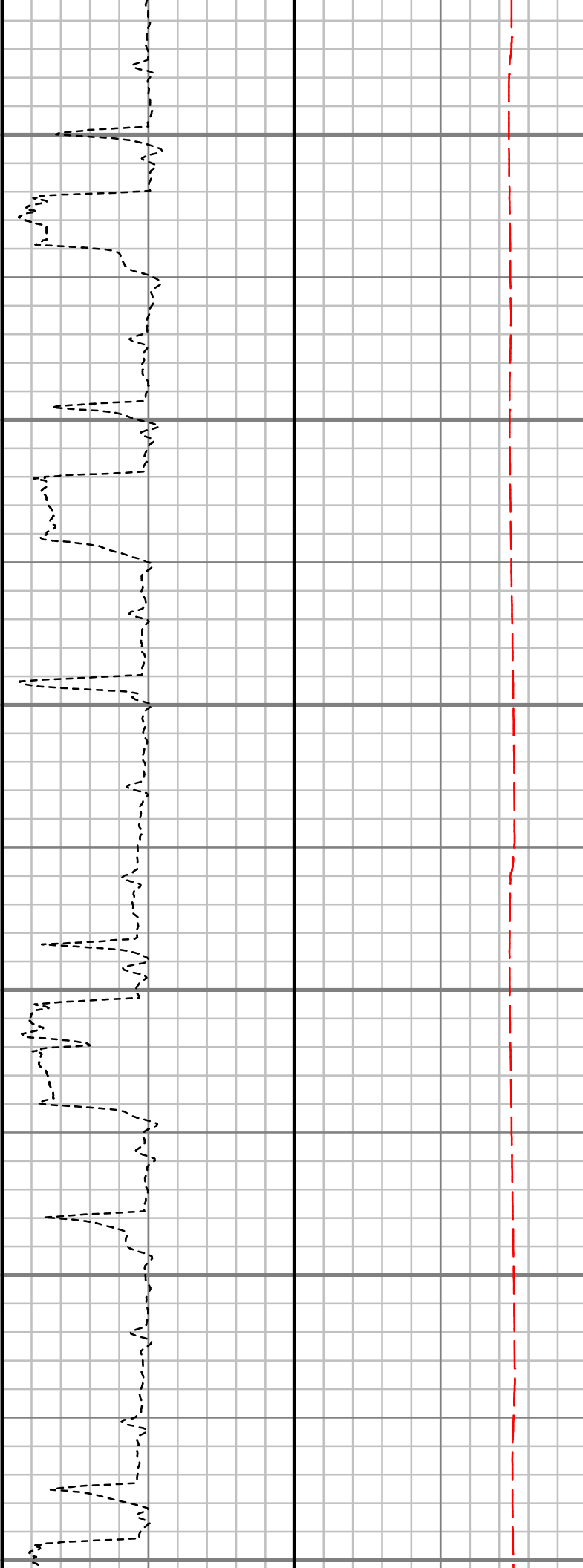
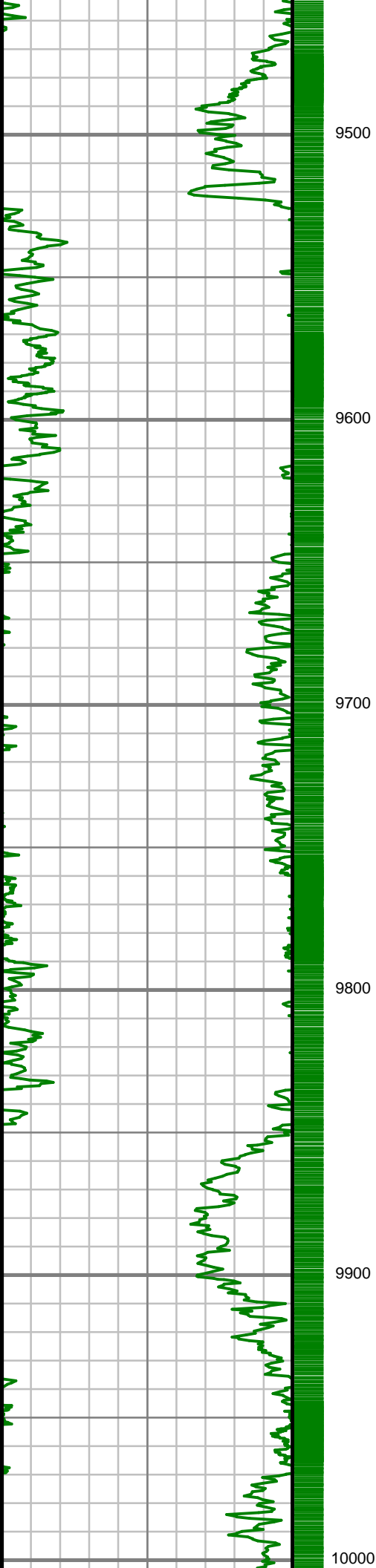
S: 93 MD: 9058.00 ft
Inc: 90.57 deg Az:
177.93 deg TVD:
7301.07 ft

S: 94 MD: 9152.00 ft
Inc: 91.48 deg Az:
177.29 deg TVD:
7299.38 ft

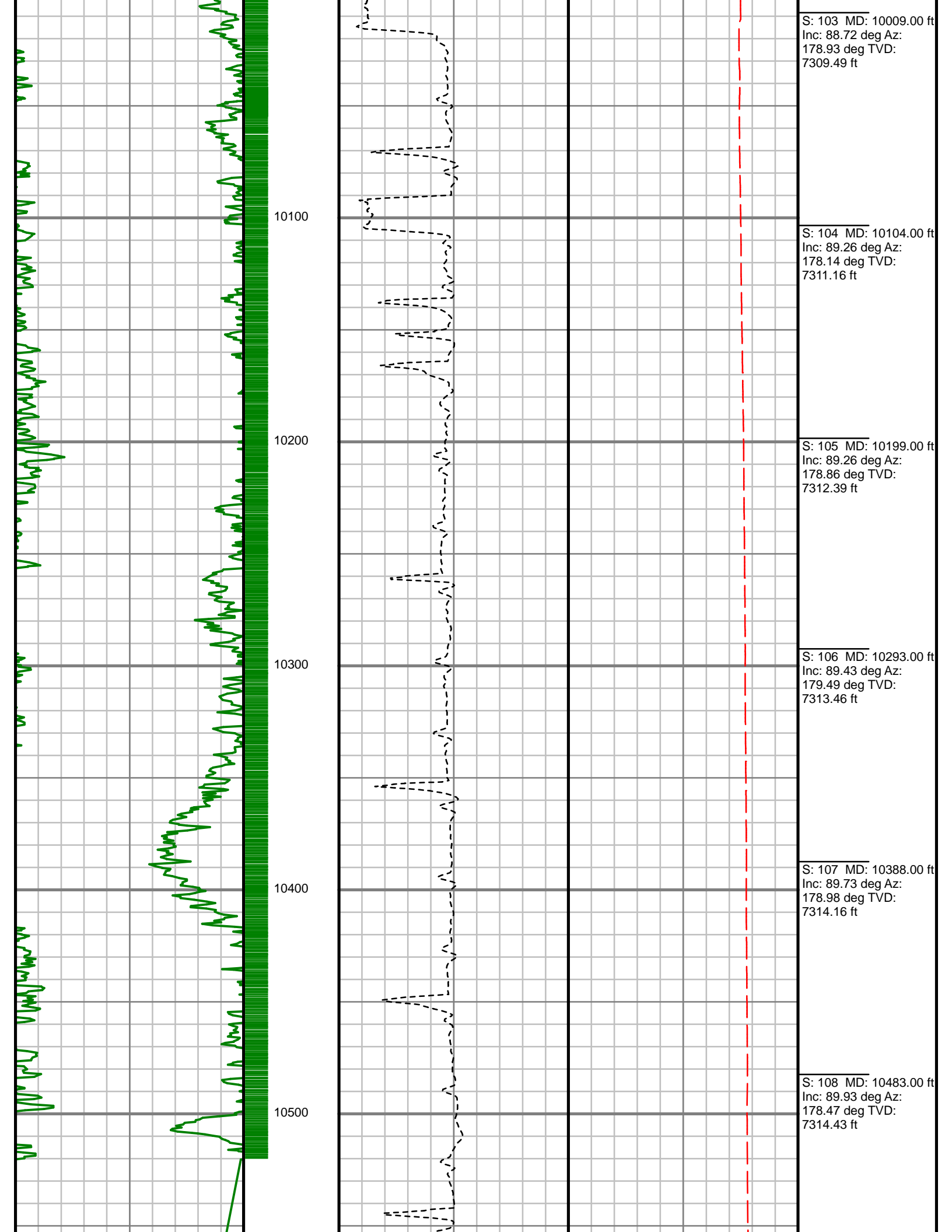
S: 95 MD: 9248.00 ft
Inc: 90.90 deg Az:
178.65 deg TVD:
7297.38 ft

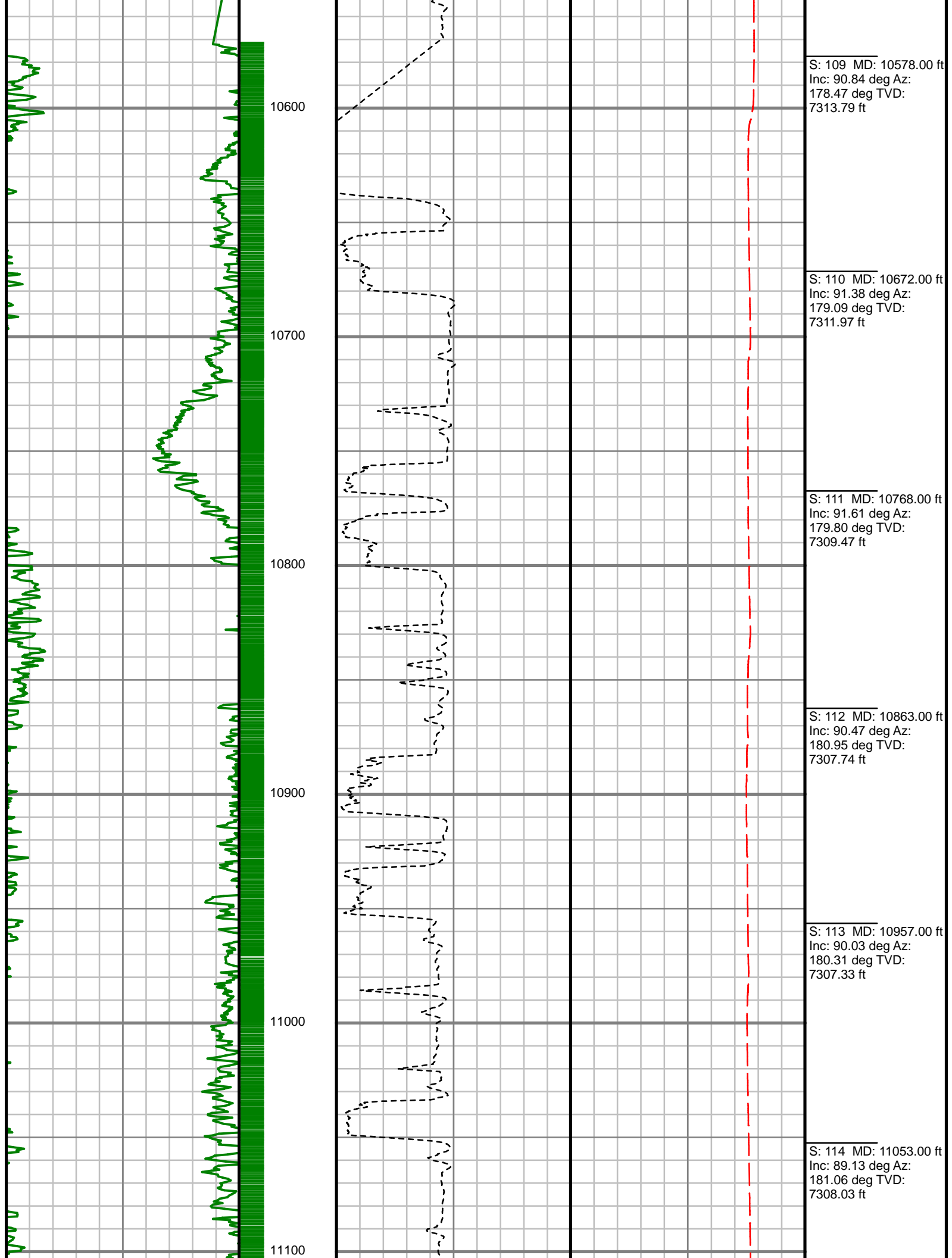
S: 96 MD: 9344.00 ft
Inc: 90.03 deg Az:
179.43 deg TVD:
7296.60 ft

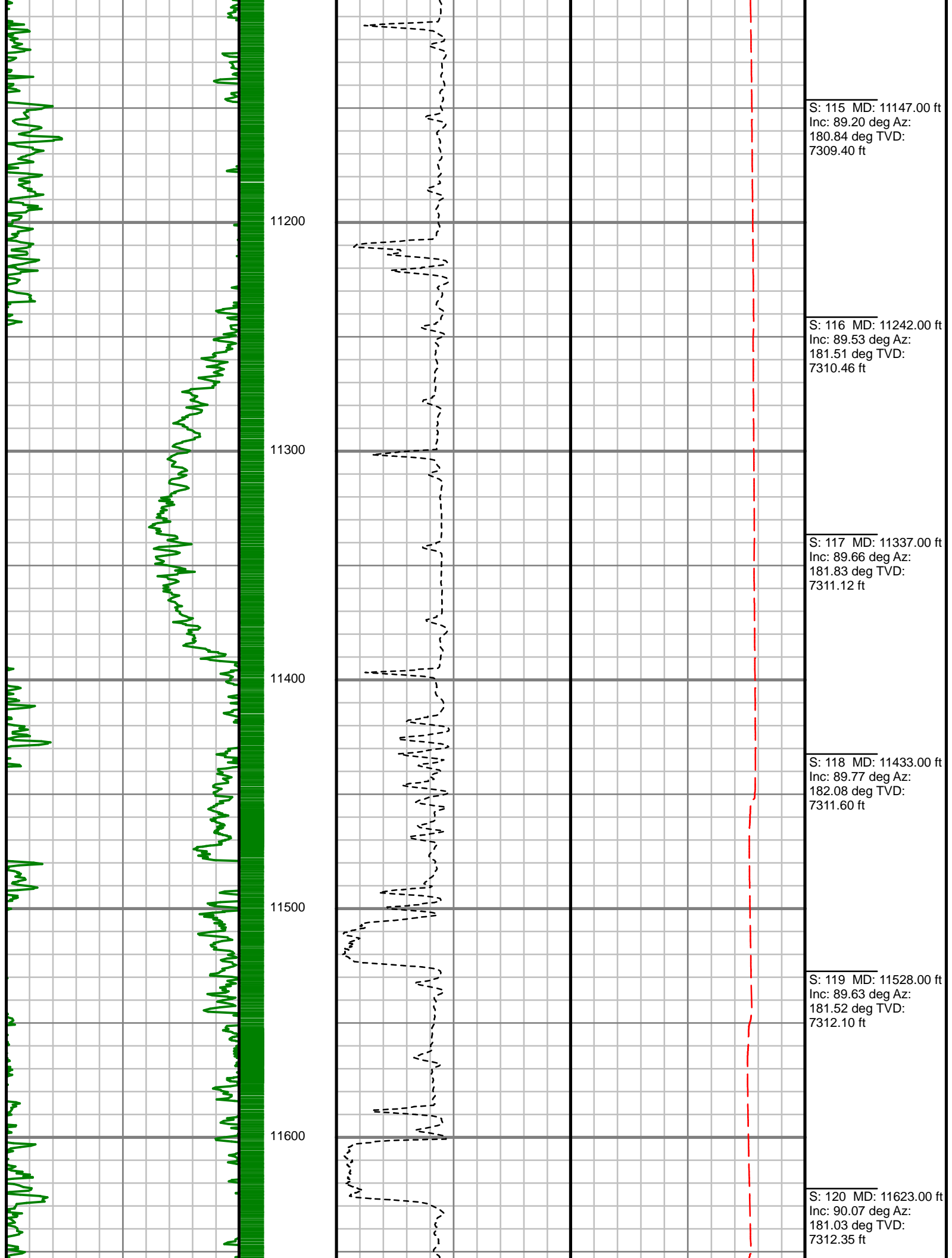
S: 97 MD: 9439.00 ft
Inc: 90.70 deg Az:

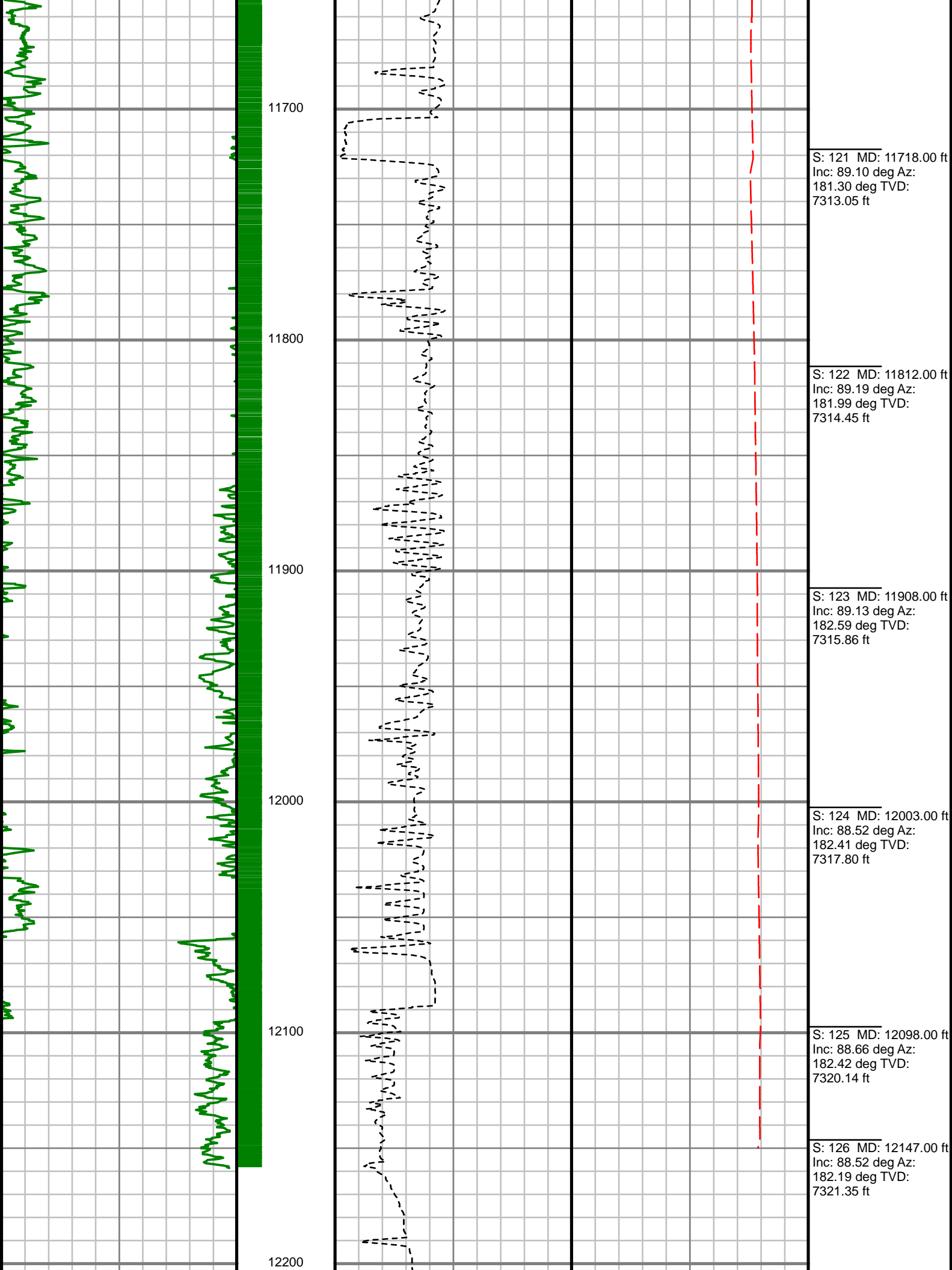


181.30 deg TVD: 7295.99 ft
S: 98 MD: 9535.00 ft Inc: 89.83 deg Az: 182.28 deg TVD: 7295.54 ft
S: 99 MD: 9630.00 ft Inc: 88.49 deg Az: 182.45 deg TVD: 7296.93 ft
S: 100 MD: 9725.00 ft Inc: 88.52 deg Az: 182.07 deg TVD: 7299.41 ft
S: 101 MD: 9820.00 ft Inc: 87.82 deg Az: 181.77 deg TVD: 7302.44 ft
S: 102 MD: 9915.00 ft Inc: 87.45 deg Az: 179.69 deg TVD: 7306.36 ft









Gamma Ray (GR)									
0	Unit = aapi								150

MEASURED DEPTH
1:600 (ft)

Rate of Penetration (ROP)			Tool Temperature (T-TEMP)			Comments
0	Unit = ft/hr	1000	0	Unit = °F	300	

SURVEY REPORT

JOHNSON TRUST 4

JOHNSON TRUST 4 PRODUCTION

CUSTOMER
PROJECT
FIELD

EXTRACTION OIL AND GAS
JOHNSON TRUST PAD
WATTENBERG

WELL INFORMATION

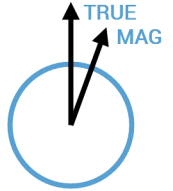
Lat/Long 40° 8' 14.697" N, 104° 57' 34.632" W
Northing 1,293,364.61 ft
Easting 3,151,083.42 ft
UWI 05-123-42320-00

MAP INFORMATION

North Reference True North
Grid Correction
System US State Plane 1983
Datum North American Datum 1983 (GRS 1980)
Map Zone Colorado North: 0501

VERTICAL SECTION REFERENCE

+N/-S 0 ft
+E/-W 0 ft
Proposal Direction 179.84°
Calculation Method Minimum Curvature



GEOMAGNETIC REFERENCE INFORMATION

Local Gravity: 999.046 mG [computed]

MD	MODEL	DATE	DECLINATION	MAG TO TRUE
0-12147 ft	BGGM2015	04 Jan 2016	8.60°	add 8.6°

WELL NOTES

OPERATORS

M. SMITH, S. NEJAD

MD ft	Inc deg	Azim deg	TVD ft	VS ft	+N/-S ft	+E/-W ft	DLS °/100ft
0.00	0.00	0.00	0.00	0.00	0.00	0.00	Invalid
216.00	0.37	354.48	216.00	-0.69	0.69	-0.07	0.17
308.00	0.68	308.87	307.99	-1.33	1.33	-0.52	0.54
401.00	0.89	306.74	400.99	-2.12	2.11	-1.53	0.23
496.00	1.37	318.23	495.97	-3.41	3.40	-2.88	0.56
591.00	0.52	292.25	590.95	-4.42	4.41	-4.03	0.98
686.00	0.38	216.44	685.95	-4.33	4.32	-4.62	0.59
781.00	1.56	170.94	780.94	-2.80	2.79	-4.60	1.39
876.00	2.10	177.04	875.89	0.21	-0.23	-4.31	0.60
970.00	1.98	184.26	969.83	3.55	-3.57	-4.34	0.30
1065.00	1.59	225.59	1064.79	6.11	-6.12	-5.40	1.38
1160.00	0.79	256.57	1159.77	7.18	-7.20	-6.98	1.05
1255.00	0.67	355.27	1254.76	6.78	-6.80	-7.67	1.17
1349.00	2.42	52.41	1348.73	5.02	-5.04	-6.14	2.27
1444.00	4.16	59.28	1443.57	2.05	-2.06	-1.59	1.87
1664.00	6.94	68.92	1662.52	-6.75	6.80	17.68	1.33
1758.00	7.91	67.71	1755.73	-11.22	11.30	28.96	1.05
1853.00	9.96	66.59	1849.57	-16.93	17.04	42.55	2.16
1947.00	12.49	70.07	1941.77	-23.58	23.74	59.58	2.79
2042.00	14.57	72.01	2034.13	-30.71	30.94	80.60	2.23

MD ft	Inc deg	Azim deg	TVD ft	VS ft	+N/-S ft	+E/-W ft	DLS °/100ft
2136.00	16.43	72.42	2124.70	-38.31	38.61	104.52	1.99
2231.00	18.07	72.48	2215.43	-46.73	47.10	131.38	1.72
2326.00	17.92	71.99	2305.78	-55.61	56.06	159.33	0.22
2421.00	19.57	68.72	2395.74	-65.82	66.35	188.06	2.06
2516.00	22.23	70.18	2484.48	-77.61	78.22	219.80	2.84
2611.00	22.99	68.87	2572.18	-90.29	91.00	254.01	0.96
2706.00	23.22	68.11	2659.56	-103.86	104.67	288.68	0.40
2800.00	24.04	67.05	2745.68	-118.14	119.04	323.51	0.98
2895.00	24.34	66.51	2832.34	-133.39	134.39	359.28	0.39
2990.00	23.59	66.47	2919.15	-148.68	149.79	394.66	0.79
3084.00	22.56	65.96	3005.63	-163.44	164.64	428.38	1.11
3179.00	22.02	63.78	3093.53	-178.65	179.94	461.00	1.04
3275.00	20.31	62.15	3183.05	-194.30	195.67	491.88	1.89
3369.00	18.34	63.03	3271.75	-208.55	210.00	519.48	2.11
3464.00	16.09	64.71	3362.49	-220.88	222.41	544.71	2.43
3559.00	16.47	60.76	3453.68	-233.02	234.61	568.36	1.23
3653.00	17.08	59.37	3543.68	-246.50	248.15	591.87	0.77
3748.00	15.87	62.03	3634.78	-259.63	261.35	615.35	1.50
3843.00	15.50	65.89	3726.25	-270.84	272.63	638.41	1.16
3938.00	17.17	67.55	3817.41	-281.32	283.17	662.96	1.82

MD ft	Inc deg	Azim deg	TVD ft	VS ft	+N/-S ft	+E/-W ft	DLS °/100ft
4033.00	18.55	68.41	3907.83	-292.16	294.09	689.97	1.48
4127.00	21.34	69.59	3996.18	-303.54	305.55	719.91	3.00
4222.00	21.87	69.12	4084.51	-315.79	317.89	752.65	0.59
4317.00	20.91	70.75	4172.96	-327.59	329.79	785.19	1.19
4411.00	19.81	68.03	4261.09	-339.00	341.28	815.80	1.54
4507.00	19.60	66.77	4351.47	-351.35	353.72	845.68	0.49
4601.00	19.28	69.86	4440.11	-362.83	365.28	874.74	1.14
4697.00	23.24	69.20	4529.56	-374.93	377.47	907.34	4.13
4791.00	26.17	71.16	4614.95	-388.11	390.75	944.31	3.24
4885.00	23.88	70.40	4700.11	-401.09	403.83	981.85	2.46
4980.00	22.99	65.27	4787.29	-415.20	418.04	1016.82	2.34
5074.00	22.05	59.84	4874.13	-431.66	434.59	1048.75	2.43
5169.00	23.72	59.13	4961.65	-450.33	453.35	1080.57	1.78
5263.00	20.58	58.26	5048.70	-468.64	471.75	1110.85	3.36
5358.00	16.84	58.35	5138.67	-484.58	487.76	1136.78	3.94
5452.00	14.16	47.98	5229.26	-499.37	502.60	1156.92	4.09
5547.00	16.59	51.95	5320.85	-515.46	518.75	1176.24	2.79
5642.00	17.77	60.58	5411.63	-530.88	534.23	1199.55	2.95
5737.00	16.35	65.40	5502.45	-543.50	546.92	1224.33	2.11
5831.00	15.78	63.05	5592.78	-554.73	558.22	1247.76	0.92

MD ft	Inc deg	Azim deg	TVD ft	VS ft	+N/-S ft	+E/-W ft	DLS °/100ft
5926.00	14.43	66.26	5684.50	-565.29	568.84	1270.11	1.67
6021.00	14.71	69.39	5776.44	-574.24	577.85	1292.23	0.88
6116.00	13.88	68.94	5868.50	-582.52	586.19	1314.15	0.88
6211.00	14.92	65.03	5960.52	-591.72	595.45	1335.87	1.50
6306.00	12.21	63.54	6052.86	-601.30	605.09	1355.96	2.87
6401.00	10.51	57.56	6146.00	-610.38	614.22	1372.27	2.17
6495.00	9.21	55.48	6238.61	-619.21	623.08	1385.70	1.44
6589.00	7.73	56.11	6331.58	-626.96	630.87	1397.15	1.57
6684.00	4.29	72.14	6426.05	-631.59	635.52	1405.84	4.00
6779.00	4.67	64.42	6520.76	-634.33	638.28	1412.71	0.75
6874.00	9.30	142.65	6615.20	-629.87	633.84	1420.87	10.01
6968.00	18.32	156.75	6706.41	-610.19	614.19	1431.33	10.17
7064.00	24.70	175.96	6795.79	-576.22	580.24	1438.72	9.82
7159.00	27.74	172.72	6881.00	-534.46	538.49	1442.92	3.54
7255.00	32.59	170.39	6963.98	-486.76	490.81	1450.08	5.19
7351.00	39.27	173.77	7041.68	-430.97	435.04	1457.70	7.25
7446.00	51.35	175.86	7108.36	-363.81	367.90	1463.66	12.81
7540.00	61.38	181.16	7160.39	-285.71	289.80	1465.48	11.65
7636.00	68.48	190.53	7201.11	-199.44	203.50	1456.44	11.51
7731.00	75.80	185.19	7230.25	-109.99	114.02	1444.18	9.37

MD ft	Inc deg	Azim deg	TVD ft	VS ft	+N/-S ft	+E/-W ft	DLS °/100ft
7826.00	75.17	184.18	7254.06	-18.35	22.36	1436.66	1.22
7921.00	83.64	178.22	7271.53	74.88	-70.87	1434.78	10.84
8015.00	90.67	178.14	7276.20	168.66	-164.65	1437.76	7.48
8110.00	90.91	180.55	7274.89	263.64	-259.62	1438.84	2.55
8204.00	89.26	182.92	7274.75	357.58	-353.57	1436.00	3.06
8298.00	87.24	183.19	7277.61	451.38	-447.39	1430.99	2.17
8393.00	87.49	183.39	7281.98	546.11	-542.13	1425.54	0.34
8488.00	86.23	182.31	7287.18	640.83	-636.87	1420.82	1.74
8583.00	86.71	180.60	7293.03	735.61	-731.65	1418.41	1.87
8678.00	89.12	178.71	7296.48	830.54	-826.58	1418.98	3.22
8773.00	89.23	179.26	7297.85	925.52	-921.55	1420.66	0.59
8867.00	89.19	179.17	7299.15	1019.50	-1015.54	1421.95	0.10
8962.00	88.96	179.59	7300.68	1114.49	-1110.52	1422.98	0.51
9058.00	90.57	177.93	7301.07	1210.46	-1206.49	1425.06	2.41
9152.00	91.48	177.29	7299.38	1304.37	-1300.39	1428.97	1.18
9248.00	90.90	178.65	7297.38	1400.30	-1396.31	1432.37	1.53
9344.00	90.03	179.43	7296.60	1496.29	-1492.29	1433.98	1.22
9439.00	90.70	181.30	7295.99	1591.28	-1587.28	1433.38	2.08
9535.00	89.83	182.28	7295.54	1687.22	-1683.23	1430.38	1.37
9630.00	88.49	182.45	7296.93	1782.11	-1778.14	1426.46	1.43

MD ft	Inc deg	Azim deg	TVD ft	VS ft	+N/-S ft	+E/-W ft	DLS °/100ft
9725.00	88.52	182.07	7299.41	1876.99	-1873.03	1422.71	0.40
9820.00	87.82	181.77	7302.44	1971.88	-1967.93	1419.52	0.81
9915.00	87.45	179.69	7306.36	2066.78	-2062.83	1418.31	2.23
10009.00	88.72	178.93	7309.49	2160.73	-2156.77	1419.44	1.57
10104.00	89.26	178.14	7311.16	2255.69	-2251.72	1421.87	1.01
10199.00	89.26	178.86	7312.39	2350.65	-2346.68	1424.36	0.76
10293.00	89.43	179.49	7313.46	2444.64	-2440.67	1425.71	0.69
10388.00	89.73	178.98	7314.16	2539.63	-2535.66	1426.98	0.62
10483.00	89.93	178.47	7314.43	2634.61	-2630.63	1429.09	0.58
10578.00	90.84	178.47	7313.79	2729.58	-2725.59	1431.63	0.96
10672.00	91.38	179.09	7311.97	2823.55	-2819.55	1433.63	0.87
10768.00	91.61	179.80	7309.47	2919.51	-2915.52	1434.56	0.78
10863.00	90.47	180.95	7307.74	3014.49	-3010.50	1433.93	1.70
10957.00	90.03	180.31	7307.33	3108.48	-3104.49	1432.90	0.82
11053.00	89.13	181.06	7308.03	3204.46	-3200.48	1431.75	1.23
11147.00	89.20	180.84	7309.40	3298.43	-3294.45	1430.19	0.25
11242.00	89.53	181.51	7310.46	3393.40	-3389.43	1428.24	0.78
11337.00	89.66	181.83	7311.12	3488.35	-3484.38	1425.47	0.37
11433.00	89.77	182.08	7311.60	3584.28	-3580.33	1422.19	0.28
11528.00	89.63	181.52	7312.10	3679.23	-3675.28	1419.20	0.61

MD ft	Inc deg	Azim deg	TVD ft	VS ft	+N/-S ft	+E/-W ft	DLS °/100ft
11623.00	90.07	181.03	7312.35	3774.20	-3770.25	1417.09	0.68
11718.00	89.10	181.30	7313.05	3869.17	-3865.23	1415.16	1.06
11812.00	89.19	181.99	7314.45	3963.11	-3959.18	1412.46	0.74
11908.00	89.13	182.59	7315.86	4059.01	-4055.09	1408.63	0.63
12003.00	88.52	182.41	7317.80	4153.89	-4149.98	1404.49	0.66
12098.00	88.66	182.42	7320.14	4248.76	-4244.87	1400.49	0.14
12147.00	88.52	182.19	7321.35	4297.70	-4293.82	1398.52	0.55

2" = 100' FEET MD