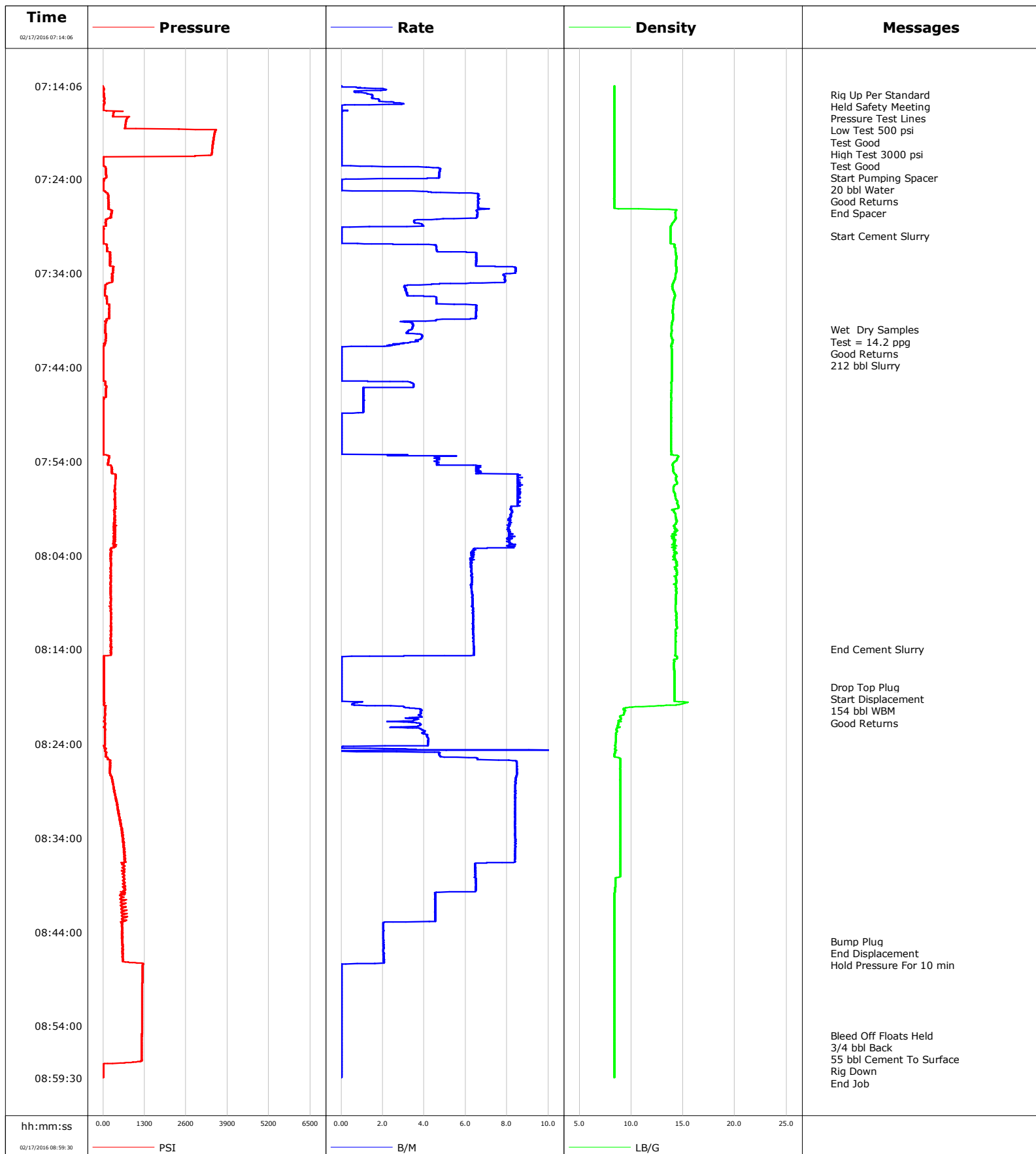


Well	Horsetail 07E-1804	Client	Whiting Oil Gas
Field		SIR No.	D5VO-01067
Engineer	Jordan Moreland / Stacy Terry	Job Type	9 5/8 Surface
Country		Job Date	



Cementing Service Report

				Customer Whiting Oil & Gas				Job Number D5VO-01067			
Well Horsetail 07E-1804			Location (legal)			Schlumberger Location			Job Start Feb/17/2016		
Field		Formation Name/Type		Deviation deg		Bit Size 13.5 in		Well MD ft		Well TVD ft	
County		State/Province Colorado		BHP psi		BHST 120 degF		BHCT 100 degF		Pore Press. Gradient lb/gal	
Well Master 0631641686		API/UWI 05123416460000									
Rig Name Unit 409		Drilled For Oil		Service Via Land		Casing/ Liner					
						Depth, ft		Size, in		Weight, lb/ft	
										Grade	
										Thread	
Offshore Zone		Well Class New		Well Type Development		2038.0		9.6		36.0	
						0.0		0.0		0.0	
Drilling Fluid Type		Max. Density lb/gal		Plastic Viscosity cP		Tubing/Drill Pipe					
						T/D		Depth, ft		Size, in	
										Weight, lb/ft	
										Grade	
										Thread	
Service Line Cementing		Job Type 9 5/8 Surface									
Max. Allowed Tub. Press psi		Max. Allowed Ann. Press psi		WH Connection Single Cement head		Perforations/Open Hole					
						Top, ft		Bottom, ft		shot/ft	
										No. of Shots	
										Total Interval ft	
										Diameter in	
						Treat Down Casing		Displacement 154.0 bbl		Packer Type	
										Packer Depth ft	
						Tubing Vol. bbl		Casing Vol. 157.0 bbl		Annular Vol. 177.0 bbl	
										Openhole Vol. 335.0 bbl	
Casing/Tubing Secured <input checked="" type="checkbox"/>		1 Hole Vol. Circulated prior to Cement <input checked="" type="checkbox"/>				Casing Tools		Squeeze Job			
Lift Pressure 1008 psi						Shoe Type Float		Squeeze Type			
Pipe Rotated <input type="checkbox"/>		Pipe Reciprocated <input type="checkbox"/>				Shoe Depth 2038.0 ft		Tool Type			
No. Centralizers		Top Plugs 1		Bottom Plugs		Stage Tool Type		Tool Depth ft			
Cement Head Type Single						Stage Tool Depth ft		Tail Pipe Size in			
Job Scheduled For Feb/17/2016		Arrived on Location Feb/17/2016		Leave Location Feb/17/2016		Collar Type Float		Tail Pipe Depth ft			
						Collar Depth 1998.0 ft		Sqz. Total Vol. bbl			
Date	Time 24-hr clock	Treating Pressure PSI	Flow Rate B/M	Density LB/G	Volume BBL	Message					
02/17/2016	07:14:06	-1	0.0	8.37	0.0						
02/17/2016	07:15:00	25	1.4	8.37	1.0	Rig Up Per Standard					
02/17/2016	07:16:00	37	3.0	8.36	2.8	Held Safety Meeting					
02/17/2016	07:16:06	15	1.3	8.36	3.1						
02/17/2016	07:17:00	326	0.0	8.37	3.1	Pressure Test Lines					
02/17/2016	07:18:00	711	0.0	8.36	3.1	Low Test 500 psi					
02/17/2016	07:18:06	705	0.0	8.37	3.1						
02/17/2016	07:19:00	3505	0.0	8.37	3.1	Test Good					
02/17/2016	07:20:00	3450	0.0	8.37	3.1	High Test 3000 psi					
02/17/2016	07:20:06	3446	0.0	8.36	3.1						
02/17/2016	07:21:00	3412	0.0	8.36	3.1	Test Good					
02/17/2016	07:22:06	13	0.0	8.36	3.1						
02/17/2016	07:23:00	86	4.8	8.36	4.6	Start Pumping Spacer					
02/17/2016	07:24:00	33	0.8	8.36	9.2	20 bbl Water					
02/17/2016	07:24:06	27	0.0	8.36	9.3						
02/17/2016	07:26:06	158	6.6	8.34	14.1						
02/17/2016	07:27:17	242	6.6	14.34	21.9	End Spacer					
02/17/2016	07:28:06	233	6.5	14.29	27.3						
02/17/2016	07:30:00	14	0.0	13.78	31.4	Start Cement Slurry					
02/17/2016	07:30:06	13	0.0	13.78	31.4						
02/17/2016	07:32:06	219	6.5	14.33	37.4						

Well			Field		Job Start		Customer		Job Number	
Horsetail 07E-1804					Feb/17/2016		Whiting Oil & Gas		D5VO-01067	
Date	Time 24-hr clock	Treating Pressure PSI	Flow Rate B/M	Density LB/G	Volume BBL	Message				
02/17/2016	07:36:06	60	3.2	14.14	63.1					
02/17/2016	07:38:06	194	6.5	13.98	73.2					
02/17/2016	07:40:00	66	3.4	13.90	82.4	Wet Dry Samples				
02/17/2016	07:40:06	64	3.2	13.92	82.7					
02/17/2016	07:41:00	79	3.8	13.94	86.0	Test = 14.2 ppg				
02/17/2016	07:42:00	8	0.0	13.90	88.5	Good Returns				
02/17/2016	07:42:06	9	0.0	13.90	88.5					
02/17/2016	07:43:00	9	0.0	13.92	88.5	212 bbl Slurry				
02/17/2016	07:44:06	10	0.0	13.93	88.5					
02/17/2016	07:46:06	96	3.5	13.85	90.5					
02/17/2016	07:48:06	9	1.1	13.85	92.8					
02/17/2016	07:50:06	8	0.0	13.85	93.6					
02/17/2016	07:52:06	8	0.0	13.84	93.6					
02/17/2016	07:54:06	157	4.6	14.18	97.2					
02/17/2016	07:56:06	381	8.5	14.33	111.2					
02/17/2016	07:58:06	376	8.5	14.35	128.3					
02/17/2016	08:00:06	356	8.1	14.32	144.9					
02/17/2016	08:02:06	377	8.1	14.14	161.1					
02/17/2016	08:04:06	242	6.3	14.16	175.8					
02/17/2016	08:06:06	233	6.3	14.37	188.4					
02/17/2016	08:08:06	229	6.3	14.33	201.0					
02/17/2016	08:10:06	253	6.3	14.33	213.6					
02/17/2016	08:12:06	238	6.4	14.27	226.4					
02/17/2016	08:14:00	250	6.4	14.27	238.5	End Cement Slurry				
02/17/2016	08:14:06	242	6.4	14.27	239.1					
02/17/2016	08:16:06	18	0.0	14.14	242.9					
02/17/2016	08:18:00	19	0.0	14.15	242.9	Drop Top Plug				
02/17/2016	08:18:06	24	0.0	14.15	242.9					
02/17/2016	08:19:00	19	0.0	14.16	242.9	Start Displacement				
02/17/2016	08:20:00	78	2.4	12.63	243.3	154 bbl WBM				
02/17/2016	08:20:06	68	3.0	10.44	243.6					
02/17/2016	08:21:00	60	3.8	9.18	246.9	Good Returns				
02/17/2016	08:22:06	57	3.8	8.68	250.8					
02/17/2016	08:24:06	55	4.2	8.45	258.8					
02/17/2016	08:26:06	217	8.5	8.94	268.0					
02/17/2016	08:28:06	305	8.4	8.95	284.9					
02/17/2016	08:30:06	414	8.4	8.95	301.7					
02/17/2016	08:32:06	521	8.4	8.95	318.5					
02/17/2016	08:34:06	613	8.4	8.95	335.2					
02/17/2016	08:36:06	678	8.4	8.95	352.0					
02/17/2016	08:38:06	666	6.5	8.94	366.0					
02/17/2016	08:40:06	571	4.5	8.39	378.3					
02/17/2016	08:42:06	714	4.5	8.38	387.4					
02/17/2016	08:44:06	586	2.0	8.37	393.5					
02/17/2016	08:45:00	605	2.0	8.37	395.4	Bump Plug				
02/17/2016	08:46:06	604	2.0	8.36	397.6					
02/17/2016	08:48:06	1234	0.0	8.37	400.2					
02/17/2016	08:50:06	1227	0.0	8.37	400.2					
02/17/2016	08:52:06	1221	0.0	8.37	400.2					
02/17/2016	08:54:06	1215	0.0	8.37	400.2					
02/17/2016	08:55:00	1213	0.0	8.37	400.2	Bleed Off Floats Held				
02/17/2016	08:56:00	1210	0.0	8.37	400.2	3/4 bbl Back				
02/17/2016	08:56:06	1210	0.0	8.37	400.2					
02/17/2016	08:57:00	1208	0.0	8.37	400.2	55 bbl Cement To Surface				

Well Horsetail 07E-1804	Field	Job Start Feb/17/2016	Customer Whiting Oil & Gas	Job Number D5VO-01067
-----------------------------------	--------------	---------------------------------	--------------------------------------	---------------------------------

Post Job Summary

Average Pump Rates, bbl/min					Volume of Fluid Injected, bbl			
Slurry	N2	Mud	Maximum Rate		Total Slurry	Mud	Spacer	N2
Treating Pressure Summary, psi					Breakdown Fluid			
Maximum	Final 0	Average	Bump Plug to	Breakdown	Type	Volume bbl		Density lb/gal
Avg. N2 Percent %	Designed Slurry Volume 0.0 bbl	Displacement bbl	Mix Water Temp 64 degF	Cement Circulated to Surface? <input checked="" type="checkbox"/>		Volume bbl		
				Washed Thru Perfs <input type="checkbox"/>		To ft		
Customer or Authorized Representative			Schlumberger Supervisor Jordan Moreland / Stacy Terry			Circulation Lost <input type="checkbox"/>		Job Completed <input checked="" type="checkbox"/>
						-		-