

2006, Alum. Cap,
0.9' Below Ground
Lat: 40.860797°
Long: 103.785433°

T10N, R57W, 6th. P.M.

2006, Alum. Cap,
0.8' Below Ground
Lat: 40.860836°
Long: 103.775861°

1917, Brass Cap,
1.2' High
Lat: 40.860800°
Long: 103.766292°

WHITING OIL & GAS CORP.

Well location, HORSETAIL #08D-1701, (SURFACE LOCATION), located as shown in the NW 1/4 NW 1/4 of Section 8, T10N, R57W, 6th. P.M., Weld County, Colorado.

BASIS OF ELEVATION

SPOT ELEVATION LOCATED AT THE NORTHEAST CORNER OF SECTION 15, T9N, R58W, 6th P.M. TAKEN FROM THE GATEHOOK SPRING, QUADRANGLE, COLORADO, WELD COUNTY, 7.5 MINUTE QUAD (TOPOGRAPHIC MAP) PUBLISHED BY THE UNITED STATES DEPARTMENT OF THE INTERIOR, GEOLOGICAL SURVEY. SAID ELEVATION IS MARKED AS BEING 4679 FEET.

BASIS OF BEARINGS

BASIS OF BEARINGS IS A G.P.S. OBSERVATION.

LEGEND:

- └ = 90° SYMBOL
- = PROPOSED WELLHEAD.
- ▲ = SECTION CORNERS LOCATED.
- ◆ = TOP OF PRODUCTION.
- = TARGET BOTTOM HOLE.



CERTIFICATION

THIS IS TO CERTIFY THAT THE ABOVE PLAT WAS PREPARED FROM FIELD NOTES OF ACTUAL SURVEYS MADE BY ME OR UNDER MY SUPERVISION AND THAT THE SAME ARE TRUE AND CORRECT TO THE BEST OF MY KNOWLEDGE AND BELIEF.

REGISTERED LAND SURVEYOR
REGISTRATION NO. 28285
STATE OF COLORADO
03-22-16

REV: 03-22-16 S.S.
REV: 03-02-16 S.S.
REV: 12-29-14 K.B.

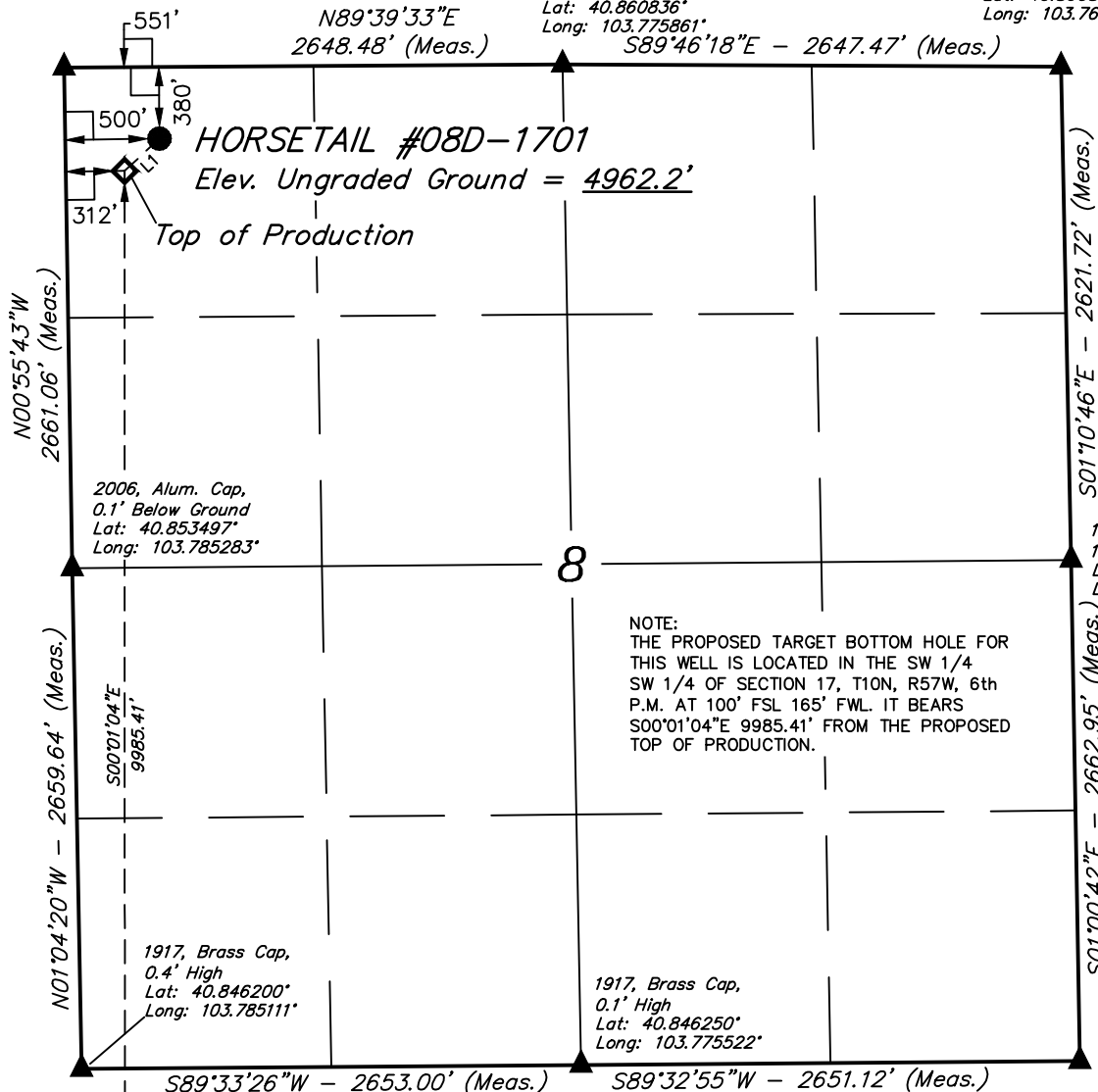
UINTAH ENGINEERING & LAND SURVEYING
85 SOUTH 200 EAST - VERNAL, UTAH 84078
(435) 789-1017

SCALE 1" = 1000'	DATE SURVEYED: 11-26-13	DATE DRAWN: 12-20-13
PARTY DALLAS NIELSEN G.W. H.K.W.	REFERENCES G.L.O. PLAT	
WEATHER COLD	FILE WHITING OIL & GAS CORP.	

LINE TABLE		
LINE	DIRECTION	LENGTH
L1	S47°06'41"W	252.72'

PDOP = 1.5

NAD 83 (TOP OF PRODUCTION)		NAD 83 (SURFACE LOCATION)	
LATITUDE =	40°51'33.45" (40.859292)	LATITUDE =	40°51'35.14" (40.859761)
LONGITUDE =	103°47'03.39" (103.784275)	LONGITUDE =	103°47'00.98" (103.783606)
NAD 27 (TOP OF PRODUCTION)		NAD 27 (SURFACE LOCATION)	
LATITUDE =	40°51'33.50" (40.859306)	LATITUDE =	40°51'35.20" (40.859778)
LONGITUDE =	103°47'01.58" (103.783772)	LONGITUDE =	103°46'59.17" (103.783103)



NOTE:
THE PROPOSED TARGET BOTTOM HOLE FOR THIS WELL IS LOCATED IN THE SW 1/4 SW 1/4 OF SECTION 17, T10N, R57W, 6th P.M. AT 100' FSL 165' FWL. IT BEARS S00°01'04"E 9985.41' FROM THE PROPOSED TOP OF PRODUCTION.

Target Bottom Hole

WHITING OIL & GAS CORP.

BASIS OF ELEVATION

BASIS OF BEARINGS

A north arrow pointing upwards, labeled with an 'N' inside a circle. Below the arrow is a graphic scale bar with alternating black and white segments. The scale is marked with '1000'', '500'', and '0' at the center, and the word 'SCALE' is written below the bar.

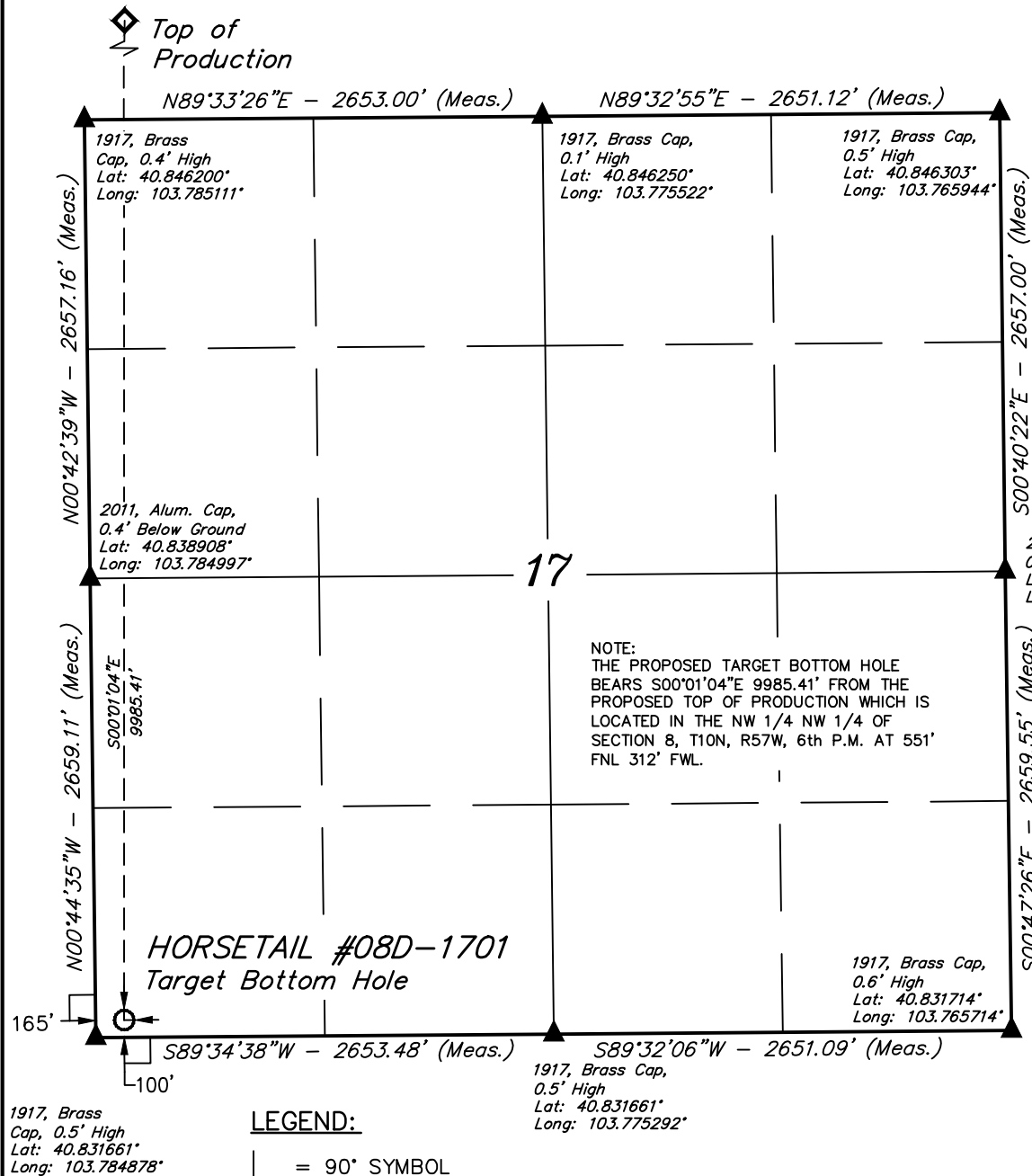
THIS IS TO CERTIFY THAT THE ABOVE PLAT WAS PREPARED FROM
FIELD NOTES OF ACTUAL SURVEYS MADE BY ME OR UNDER MY
SUPERVISION AND THAT THE SAME ARE TRUE AND CORRECT TO THE
BEST OF MY KNOWLEDGE AND BELIEF

REGISTERED LAND SURVEYOR
REGISTRATION NO. 28285
STATE OF COLORADO
03-22-16

REV: 03-22-16 S.S.
REV: 03-02-16 S.S.
REV: 12-29-14 K.B.

UINTAH ENGINEERING & LAND SURVEYING
85 SOUTH 200 EAST - VERNAL, UTAH 84078
(435) 789-1017

SCALE 1" = 1000'	DATE SURVEYED: 11-26-13	DATE DRAWN: 12-20-13
PARTY DALLAS NIELSEN G.W. H.K.W.	REFERENCES G.L.O. PLAT	
WEATHER COLD	FILE WHITING OIL & GAS CORP.	



1917, Brass
Cap, 0.5' High
Lat: 40.831661°
Long: 103.784878°

LEGEND:

| = 90° SYMBOL

▲ = SECTION CORNERS LOCATED.

○ = TARGET BOTTOM HOLE.

◆ = TOP OF PRODUCTION.

NOTE:
THE PROPOSED TARGET BOTTOM HOLE
BEARS S00°01'04"E 9985.41' FROM THE
PROPOSED TOP OF PRODUCTION WHICH IS
LOCATED IN THE NW 1/4 NW 1/4 OF
SECTION 8, T10N, R57W, 6th P.M. AT 551'
FNL 312' FWL.

NAD 83 (TARGET BOTTOM HOLE)	
LATITUDE	= 40°49'54.80" (40.831889)
LONGITUDE	= 103°47'03.43" (103.784286)
NAD 27 (TARGET BOTTOM HOLE)	
LATITUDE	= 40°49'54.85" (40.831903)
LONGITUDE	= 103°47'01.63" (103.783786)