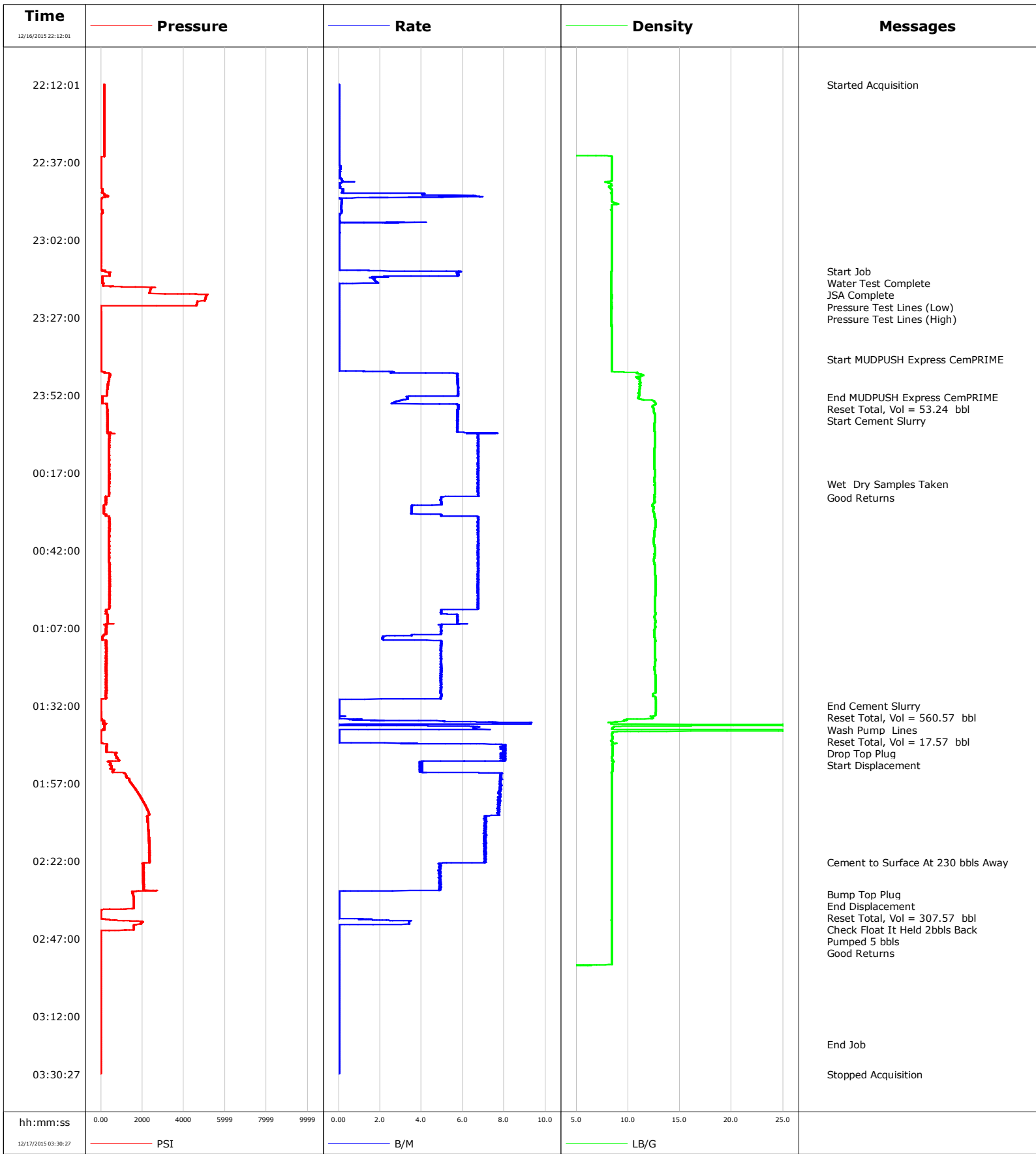


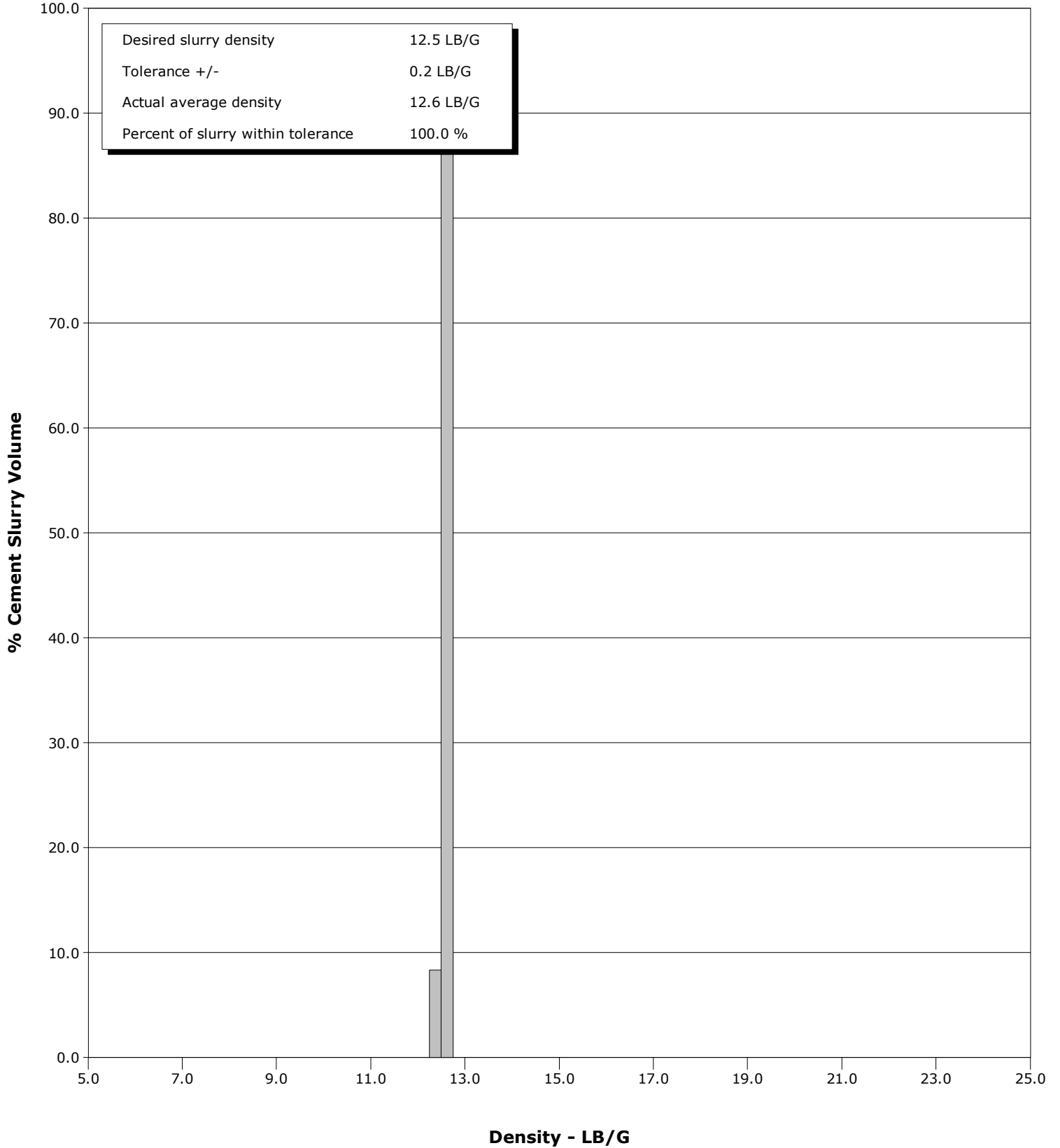
<b>Well</b>	Fairview	<b>Client</b>	Extraction
<b>Field</b>	Wattenberg	<b>SIR No.</b>	CYUT-00150
<b>Engineer</b>	Wayne Silvester/Justin Storey	<b>Job Type</b>	Monobore
<b>Country</b>	United States	<b>Job Date</b>	12-16-2015



**Well** Fairview  
**Field** Wattenberg  
**Engineer** Wayne Silvester/Justin Storey  
**Country** United States

**Client** Extraction  
**SIR No.** CYUT-00150  
**Job Type** Monobore  
**Job Date** 12-16-2015

Cement Slurry - 12/16/2015 23:54:22 to 12/17/2015 01:31:55



				Customer			Job Number		
				Extraction			CYUT-00150		
Well		Location (legal)		Schlumberger Location		Job Start			
Fairview 10-10		217304		Cheyenne		Dec/16/2015			
Field		Formation Name/Type		Deviation	Bit Size	Well MD	Well TVD		
Wattenberg		Shale		deg	7.9 in	13880.0 ft	6949.8 ft		
County		State/Province		BHP	BHST	BHCT	Pore Press. Gradient		
Weld		Colorado		3010 psi	205 degF	204 degF	lb/gal		
Well Master		API/UWI							
0631637454		05123415170000							
Rig Name	Drilled For	Service Via	Casing/Liner						
Savanna 802	Oil & Gas	Land	Depth, ft		Size, in	Weight, lb/ft	Grade	Thread	
Offshore Zone	Well Class	Well Type	13880.0	5.5	20.0	N/A	BUTT		
	New	Other	0.0	0.0	0.0				
Drilling Fluid Type		Max. Density	Plastic Viscosity	Tubing/Drill Pipe					
LT OBM		8.90 lb/gal	cP	T/D	Depth, ft	Size, in	Weight, lb/ft	Grade	Thread
Service Line	Job Type								
Cementing	Monobore								
Max. Allowed Tub. Press	Max. Allowed Ann. Press	WH Connection	Perforations/Open Hole						
psi	psi	5 1/2	Top, ft	Bottom, ft	shot/ft	No. of Shots	Total Interval		
			ft	ft			ft		
			ft	ft			Diameter		
			ft	ft			in		
Service Instructions		Treat Down	Displacement	Packer Type	Packer Depth				
MI (Move in) Schlumberger equipment. 2. Conduct Rig-up, Prime-up and pressure test safety meeting. 3. RU (Rig up) Schlumberger equipment and pressure test to customer master valve. 4. Conduct pre-job safety meeting. 5. Perform treatment per design pumping schedule and instructions of client representative. 6. Perform low pressure test to 1000 psi and high pressure test to 5000 psi *MAX WORKING PRESSURE OF 5000 PSI - CLIENT CONFIRMED* 7. 50 bbls MP Express+ CemPRIME Optimized Surfactant @ 11 ppg +/- 0.2 ppg 8. Drop Bottom Plug		Casing	307.0 bbl		ft				
		Tubing Vol.	Casing Vol.	Annular Vol.	Openhole Vol.				
		bbl	307.0 bbl	74.0 bbl	380.0 bbl				
Casing/Tubing Secured		1 Hole Vol. Circulated prior to Cement	Casing Tools			Squeeze Job			
<input checked="" type="checkbox"/>		<input checked="" type="checkbox"/>							
Lift Pressure		Shoe Type	Shoe Depth		Squeeze Type				
3009 psi		Float	13880.0 ft						
Pipe Rotated		Pipe Reciprocated	Stage Tool Type			Tool Depth			
<input type="checkbox"/>		<input type="checkbox"/>				ft			
No. Centralizers		Top Plugs	Bottom Plugs	Stage Tool Depth			Tail Pipe Size		
		1		ft			in		
Cement Head Type		Job Scheduled For	Arrived on Location	Leave Location	Collar Type		Tail Pipe Depth		
Single		Dec/16/2015	Dec/16/2015	Dec/16/2015	toe sleeve		ft		
					Collar Depth		Sqz. Total Vol.		
					13835.0 ft		bbl		
Date	Time 24-hr clock	Flow Rate B/M	Density LB/G	Volume BBL	CPF1_PRESS PSI	Message			
12/16/2015	22:12:01	0.0	0.01	0.0	471	Started Acquisition			
12/16/2015	22:17:02	0.0	0.01	0.0	472				
12/16/2015	22:22:03	0.0	0.01	0.0	471				
12/16/2015	22:27:04	0.0	0.01	0.0	472				
12/16/2015	22:32:05	0.0	0.01	0.0	471				
12/16/2015	22:37:06	0.0	8.41	0.0	0				
12/16/2015	22:42:07	0.0	8.40	0.0	1				
12/16/2015	22:47:08	4.1	8.39	0.0	115				
12/16/2015	22:52:09	0.1	8.41	0.0	1				
12/16/2015	22:57:10	0.0	8.40	0.0	2				
12/16/2015	23:02:11	0.0	8.41	0.0	5				
12/16/2015	23:07:12	0.0	8.41	0.0	5				
12/16/2015	23:12:13	5.8	8.39	0.0	314	Start Job			
12/16/2015	23:12:15	5.8	8.39	0.0	318	Water Test Complete			
12/16/2015	23:13:59	2.2	8.39	2.9	86	JSA Complete			
12/16/2015	23:17:14	0.0	8.39	6.6	1501				
12/16/2015	23:18:42	0.0	8.39	6.6	2397	Pressure Test Lines (Low)			
12/16/2015	23:20:42	0.0	8.40	6.6	5113	Pressure Test Lines (High)			
12/16/2015	23:22:15	0.0	8.40	6.6	4702				
12/16/2015	23:27:16	0.0	8.39	6.6	13				
12/16/2015	23:32:17	0.0	8.41	6.6	13				

Well			Field		Job Start	Customer	Job Number
Fairview 10-10			Wattenberg		Dec/16/2015	Extraction	CYUT-00150
Date	Time 24-hr clock	Flow Rate B/M	Density LB/G	Volume BBL	CPF1_PRESS PSI	Message	
12/16/2015	23:40:26	0.0	8.40	6.6	13	Start MUDPUSH Express CemPRIME	
12/16/2015	23:42:19	0.0	8.40	6.6	15		
12/16/2015	23:47:20	5.8	11.15	22.0	440		
12/16/2015	23:52:21	5.1	11.03	50.9	114		
12/16/2015	23:52:37	3.3	11.01	51.8	89	End MUDPUSH Express CemPRIME	
12/16/2015	23:53:35	3.1	11.46	55.0	76	Reset Total, Vol = 53.24 bbl	
12/16/2015	23:54:22	2.7	12.57	57.2	83	Start Cement Slurry	
12/16/2015	23:57:22	5.7	12.49	73.0	434		
12/17/2015	00:02:23	5.7	12.53	101.8	418		
12/17/2015	00:07:24	6.7	12.58	134.1	534		
12/17/2015	00:12:25	6.7	12.53	167.9	505		
12/17/2015	00:17:26	6.7	12.60	201.7	553		
12/17/2015	00:20:32	6.7	12.57	222.5	509	Wet Dry Samples Taken	
12/17/2015	00:22:27	6.7	12.59	235.4	538		
12/17/2015	00:25:07	4.9	12.55	252.5	322	Good Returns	
12/17/2015	00:27:28	3.7	12.33	264.1	177		
12/17/2015	00:32:29	6.7	12.63	287.6	508		
12/17/2015	00:37:30	6.7	12.52	321.3	502		
12/17/2015	00:42:31	6.7	12.57	355.1	512		
12/17/2015	00:47:32	6.7	12.57	388.9	516		
12/17/2015	00:52:33	6.7	12.65	422.6	523		
12/17/2015	00:57:34	6.7	12.60	456.4	529		
12/17/2015	01:02:35	5.7	12.62	487.3	417		
12/17/2015	01:07:36	4.9	12.53	514.6	324		
12/17/2015	01:12:37	4.9	12.58	534.8	299		
12/17/2015	01:17:38	4.9	12.61	559.6	280		
12/17/2015	01:22:39	5.0	12.62	584.4	300		
12/17/2015	01:27:40	4.9	12.62	609.2	308		
12/17/2015	01:31:55	0.0	12.67	619.9	16	End Cement Slurry	
12/17/2015	01:31:57	0.0	12.67	619.9	17	Reset Total, Vol = 560.57 bbl	
12/17/2015	01:32:22	0.0	12.67	619.9	17	Wash Pump Lines	
12/17/2015	01:32:41	0.0	12.67	619.9	19		
12/17/2015	01:37:42	9.3	8.37	627.1	196		
12/17/2015	01:40:25	0.0	8.57	636.9	3	Reset Total, Vol = 17.57 bbl	
12/17/2015	01:41:55	0.0	8.48	636.9	14	Drop Top Plug	
12/17/2015	01:42:43	0.0	8.45	636.9	15		
12/17/2015	01:42:54	0.0	8.44	636.9	15	Start Displacement	
12/17/2015	01:47:44	8.0	8.45	665.7	711		
12/17/2015	01:52:45	3.9	8.46	693.9	587		
12/17/2015	01:57:46	7.8	8.41	730.3	1599		
12/17/2015	02:02:47	7.8	8.41	769.3	2078		
12/17/2015	02:07:48	7.1	8.40	807.8	2257		
12/17/2015	02:12:49	7.1	8.40	843.4	2342		
12/17/2015	02:17:50	7.1	8.40	878.8	2380		
12/17/2015	02:22:23	7.1	8.40	911.0	2378	Cement to Surface At 230 bbls Away	
12/17/2015	02:27:52	4.9	8.40	938.1	2073		
12/17/2015	02:32:35	0.0	8.40	956.0	1573	Bump Top Plug	
12/17/2015	02:32:36	0.0	8.40	956.0	1582	End Displacement	
12/17/2015	02:32:53	0.0	8.40	956.0	1588		
12/17/2015	02:33:28	0.0	8.40	956.0	1600	Reset Total, Vol = 307.57 bbl	
12/17/2015	02:37:30	0.0	8.41	956.0	486	Check Float It Held 2bbls Back	
12/17/2015	02:37:54	0.0	8.41	956.0	10		
12/17/2015	02:39:03	0.0	8.41	956.0	19	Pumped 5 bbls	
12/17/2015	02:41:01	2.4	8.40	956.7	807	Good Returns	

Well		Field		Job Start		Customer		Job Number	
Fairview 10-10		Wattenberg		Dec/16/2015		Extraction		CYUT-00150	
Date	Time 24-hr clock	Flow Rate B/M	Density LB/G	Volume BBL	CPF1_PRESS PSI	Message			
12/17/2015	02:47:56	0.0	8.41	961.2	12				
12/17/2015	02:52:57	0.0	8.42	961.2	14				
12/17/2015	02:57:58	0.0	0.05	961.2	13				
12/17/2015	03:02:59	0.0	0.01	961.2	9				
12/17/2015	03:08:00	0.0	0.01	961.2	9				
12/17/2015	03:13:01	0.0	0.01	961.2	8				
12/17/2015	03:18:02	0.0	0.01	961.2	7				
12/17/2015	03:20:54	0.0	0.01	961.2	8	End Job			
12/17/2015	03:23:03	0.0	0.01	961.2	9				
12/17/2015	03:28:04	0.0	0.01	961.2	10				

### Post Job Summary

Average Pump Rates, bbl/min				Volume of Fluid Injected, bbl			
Slurry	N2	Mud	Maximum Rate	Total Slurry	Mud	Spacer	N2
5.3			7.8	560.0	0.0	50.2	
Treating Pressure Summary, psi				Breakdown Fluid			
Maximum	Final	Average	Bump Plug to	Breakdown	Type	Volume	Density
5216	9	575	3509			bbl	lb/gal
Avg. N2 Percent	Designed Slurry Volume	Displacement	Mix Water Temp	Cement Circulated to Surface?	<input checked="" type="checkbox"/>	Volume	77.0 bbl
%	533.0 bbl	307.2 bbl	65 degF	Washed Thru Perfs	<input type="checkbox"/>	To	ft
Customer or Authorized Representative	Schlumberger Supervisor			Circulation Lost	<input type="checkbox"/>	Job Completed	<input checked="" type="checkbox"/>
Jose Torres	Wayne Silvester/Justin Storey			-		-	