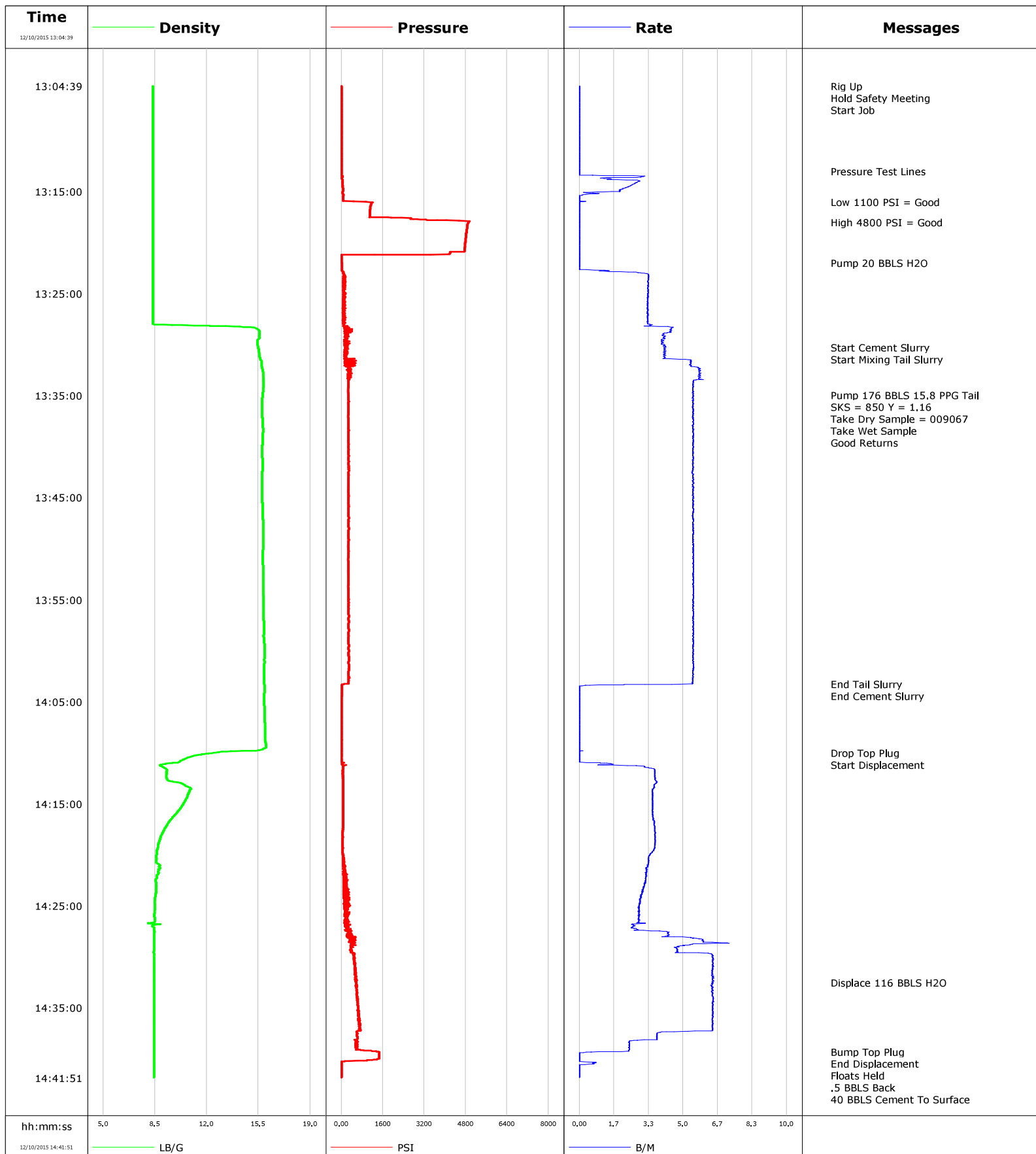
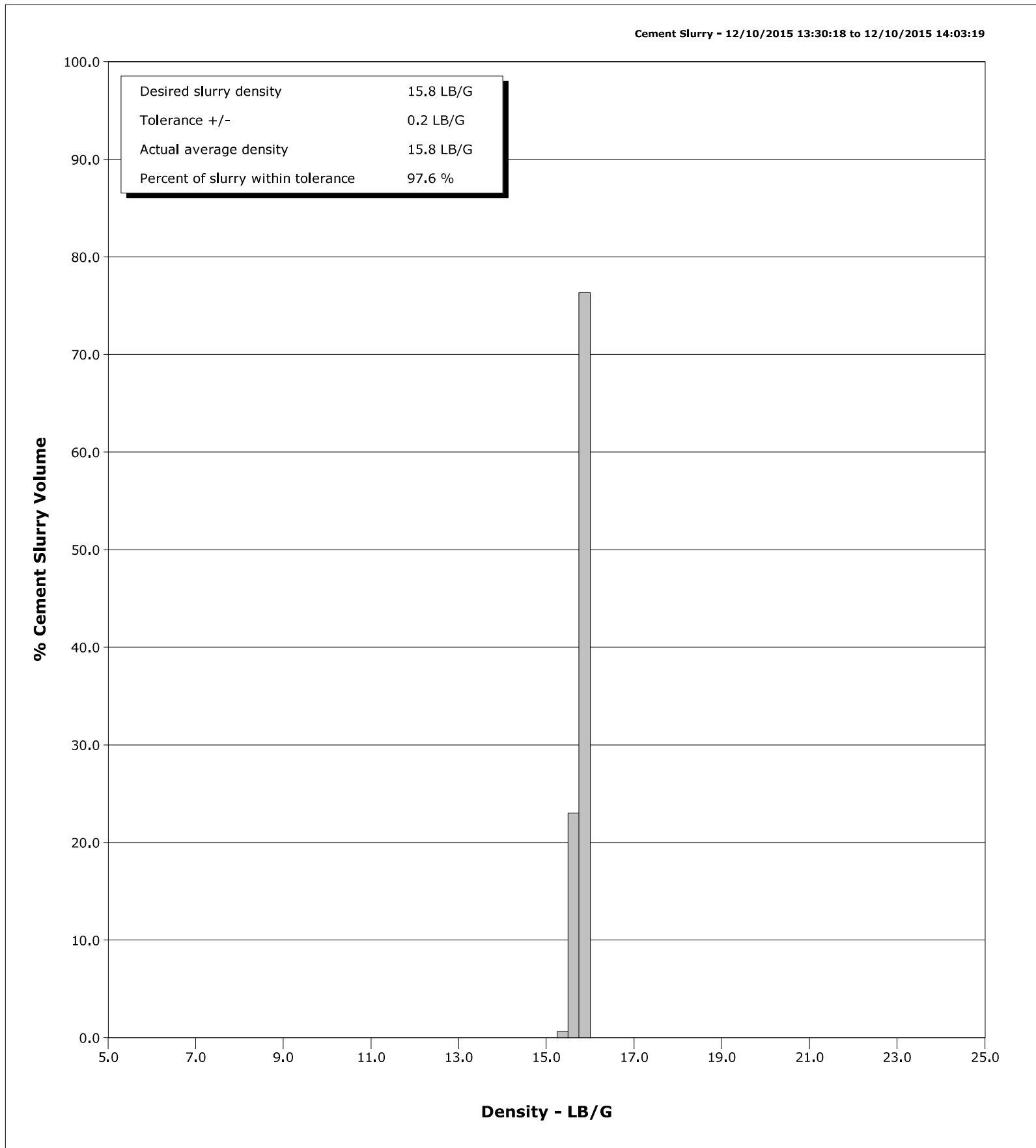


Well	Fairview 9	Client	Extraction
Field	DJ	SIR No.	2231956
Engineer	Conley Jensen/ Matt Leiker	Job Type	9 5/8" Surface
Country	United States	Job Date	12-10-2015



Well	Fairview 9	Client	Extraction
Field	DJ	SIR No.	2231956
Engineer	Conley Jensen/ Matt Leiker	Job Type	9 5/8" Surface
Country	United States	Job Date	12-10-2015



Cementing Service Report

				Customer Extraction				Job Number 2231956			
Well Fairview 9 9			Location (legal) CWY			Schlumberger Location CWY			Job Start Dec/10/2015		
Field DJ		Formation Name/Type Shale		Deviation deg		Bit Size 13.5 in		Well MD 1544.0 ft		Well TVD 1544.0 ft	
County Weld		State/Province Colorado		BHP psi		BHST 100 degF		BHCT 84 degF		Pore Press. Gradient lb/gal	
Well Master 0631637457		API/UWI 05123415200000									
Rig Name Savanna 802		Drilled For Oil		Service Via Land		Casing/Liner					
						Depth, ft		Size, in		Weight, lb/ft	
Offshore Zone		Well Class New		Well Type Development		1544.0		9.6		36.0	
						0.0		0.0		0.0	
Drilling Fluid Type		Max. Density lb/gal		Plastic Viscosity cP		Tubing/Drill Pipe					
						T/D		Depth, ft		Size, in	
Service Line Cementing		Job Type 9 5/8" Surface									
Max. Allowed Tub. Press psi		Max. Allowed Ann. Press psi		WH Connection Single Cement head		Perforations/Open Hole					
						Top, ft		Bottom, ft		shot/ft	
						ft		ft			
						ft		ft			
						Treat Down Casing		Displacement 116.0 bbl		Packer Type	
										Packer Depth ft	
						Tubing Vol. bbl		Casing Vol. 119.0 bbl		Annular Vol. 135.0 bbl	
										Openhole Vol. 254.0 bbl	
Casing/Tubing Secured <input checked="" type="checkbox"/>		1 Hole Vol. Circulated prior to Cement <input checked="" type="checkbox"/>		Casing Tools				Squeeze Job			
Lift Pressure psi				Shoe Type Guide				Squeeze Type			
Pipe Rotated <input type="checkbox"/>		Pipe Reciprocated <input type="checkbox"/>		Shoe Depth 1544.0 ft				Tool Type			
No. Centralizers		Top Plugs 1		Bottom Plugs		Stage Tool Type				Tool Depth ft	
Cement Head Type Single						Stage Tool Depth ft				Tail Pipe Size in	
Job Scheduled For Dec/10/2015 08:30		Arrived on Location Dec/10/2015 08:30		Leave Location Dec/10/2015 16:00		Collar Type Float				Tail Pipe Depth ft	
						Collar Depth 1502.0 ft				Sqz. Total Vol. bbl	
Date	Time 24-hr clock	Treating Pressure PSI	Flow Rate B/M	Density LB/G	Volume BBL	Message					
12/10/2015	13:04:39	5	0.0	8.37	0.0	Started Acquisition					
12/10/2015	13:04:40	6	0.0	8.37	0.0	Rig Up					
12/10/2015	13:04:44	6	0.0	8.37	0.0	Start Job					
12/10/2015	13:06:09	6	0.0	8.37	0.0						
12/10/2015	13:07:39	6	0.0	8.38	0.0						
12/10/2015	13:09:09	4	0.0	8.37	0.0						
12/10/2015	13:10:39	4	0.0	8.37	0.0						
12/10/2015	13:12:09	5	0.0	8.37	0.0						
12/10/2015	13:13:00	5	0.0	8.37	0.0	Pressure Test Lines					
12/10/2015	13:13:39	14	2.1	8.37	0.6						
12/10/2015	13:15:09	52	0.7	8.37	3.8						
12/10/2015	13:16:00	943	0.2	8.37	3.9	Low 1100 PSI = Good					
12/10/2015	13:16:39	1120	0.0	8.37	3.9						
12/10/2015	13:18:00	4970	0.0	8.37	3.9	High 4800 PSI = Good					
12/10/2015	13:18:09	4926	0.0	8.37	3.9						
12/10/2015	13:19:39	4780	0.0	8.37	3.9						
12/10/2015	13:21:09	4159	0.0	8.37	3.9						
12/10/2015	13:22:00	23	0.0	8.37	3.9	Pump 20 BBLS H2O					
12/10/2015	13:22:39	23	0.0	8.37	3.9						
12/10/2015	13:24:09	72	3.3	8.37	8.3						
12/10/2015	13:25:39	47	3.3	8.37	13.2						

Well			Field		Job Start		Customer		Job Number	
Fairview 9 9			DJ		Dec/10/2015		Extraction		2231956	
Date	Time 24-hr clock	Treating Pressure PSI	Flow Rate B/M	Density LB/G	Volume BBL	Message				
12/10/2015	13:28:39	313	4.4	15.55	3.3					
12/10/2015	13:30:09	190	4.1	15.45	9.5					
12/10/2015	13:30:18	202	4.1	15.46	10.1	Start Cement Slurry				
12/10/2015	13:30:19	144	4.1	15.46	10.2	Start Mixing Tail Slurry				
12/10/2015	13:31:39	195	5.4	15.73	15.9					
12/10/2015	13:33:09	412	5.8	15.81	24.3					
12/10/2015	13:34:39	320	5.5	15.79	32.7					
12/10/2015	13:34:57	335	5.5	15.77	34.3	Pump 176 BBLS 15.8 PPG Tail				
12/10/2015	13:36:09	344	5.5	15.73	40.9					
12/10/2015	13:37:16	340	5.5	15.76	47.0	Take Wet Sample				
12/10/2015	13:37:28	355	5.5	15.77	48.1	Good Returns				
12/10/2015	13:37:39	345	5.5	15.77	49.1					
12/10/2015	13:39:09	346	5.5	15.77	57.3					
12/10/2015	13:40:39	334	5.5	15.74	65.6					
12/10/2015	13:42:09	349	5.5	15.76	73.8					
12/10/2015	13:43:39	344	5.5	15.73	82.0					
12/10/2015	13:45:09	341	5.5	15.74	90.2					
12/10/2015	13:46:39	334	5.5	15.78	98.4					
12/10/2015	13:48:09	341	5.5	15.80	106.7					
12/10/2015	13:49:39	354	5.5	15.79	114.9					
12/10/2015	13:51:09	340	5.5	15.77	123.1					
12/10/2015	13:52:39	344	5.5	15.81	131.3					
12/10/2015	13:54:09	340	5.5	15.81	139.6					
12/10/2015	13:55:39	338	5.5	15.82	147.8					
12/10/2015	13:57:09	344	5.5	15.85	156.0					
12/10/2015	13:58:39	351	5.5	15.85	164.2					
12/10/2015	14:00:09	340	5.5	15.89	172.5					
12/10/2015	14:01:39	355	5.5	15.88	180.7					
12/10/2015	14:03:09	367	5.4	15.87	188.9					
12/10/2015	14:03:17	324	5.4	15.87	189.6	End Tail Slurry				
12/10/2015	14:03:19	47	3.2	15.87	189.8	End Cement Slurry				
12/10/2015	14:04:39	18	0.0	15.87	190.0					
12/10/2015	14:06:09	17	0.0	15.90	190.0					
12/10/2015	14:07:39	17	0.0	15.93	190.0					
12/10/2015	14:09:09	17	0.0	15.98	190.0					
12/10/2015	14:10:00	17	0.0	12.62	190.0	Drop Top Plug				
12/10/2015	14:10:39	17	0.0	10.47	190.0					
12/10/2015	14:12:09	52	3.6	9.29	3.4					
12/10/2015	14:13:39	62	3.5	10.86	8.9					
12/10/2015	14:15:09	60	3.5	10.36	14.2					
12/10/2015	14:16:39	54	3.6	9.50	19.5					
12/10/2015	14:18:09	44	3.6	8.92	24.9					
12/10/2015	14:19:39	40	3.6	8.65	30.4					
12/10/2015	14:21:09	73	3.3	8.77	35.4					
12/10/2015	14:22:39	92	3.2	8.56	40.3					
12/10/2015	14:24:09	140	3.0	8.52	44.9					
12/10/2015	14:25:39	302	2.9	8.46	49.2					
12/10/2015	14:27:09	358	2.6	8.43	53.5					
12/10/2015	14:28:39	467	7.1	8.42	60.3					
12/10/2015	14:30:09	508	6.4	8.42	68.5					
12/10/2015	14:31:39	576	6.4	8.42	78.2					
12/10/2015	14:32:31	552	6.4	8.42	83.7	Displace 116 BBLS H2O				
12/10/2015	14:33:09	614	6.4	8.42	87.8					
12/10/2015	14:34:39	658	6.4	8.42	97.4					

Well			Field		Job Start	Customer		Job Number	
Fairview 9 9			DJ		Dec/10/2015	Extraction		2231956	
Date	Time 24-hr clock	Treating Pressure PSI	Flow Rate B/M	Density LB/G	Volume BBL	Message			
12/10/2015	14:37:39	611	3.7	8.42	115.9				
12/10/2015	14:39:09	773	2.4	8.42	120.2				
12/10/2015	14:39:17	1378	2.0	8.42	120.5	Bump Top Plug			
12/10/2015	14:39:18	1468	1.6	8.42	120.6	End Displacement			
12/10/2015	14:40:39	12	0.0	8.42	120.8				
12/10/2015	14:40:53	13	0.0	8.42	120.8	Floats Held			
12/10/2015	14:40:56	13	0.0	8.42	120.8	40 BBLS Cement To Surface			

Post Job Summary

Average Pump Rates, bbl/min					Volume of Fluid Injected, bbl							
Slurry 4.6	N2	Mud	Maximum Rate 7.2	Total Slurry 331.1	Mud 0.0	Spacer 30.4	N2					
Treating Pressure Summary, psi					Breakdown Fluid							
Maximum 4983	Final 13	Average 420	Bump Plug to 1400	Breakdown	Type	Volume bbl	Density lb/gal					
Avg. N2 Percent %	Designed Slurry Volume 176.0 bbl	Displacement 110.7 bbl	Mix Water Temp 65 degF	Cement Circulated to Surface? <input checked="" type="checkbox"/>		Volume 40.0 bbl						
				Washed Thru Perfs <input type="checkbox"/>		To ft						
Customer or Authorized Representative Shawn McIntire			Schlumberger Supervisor Conley Jensen/ Matt Leiker			Circulation Lost <input type="checkbox"/>	Job Completed <input checked="" type="checkbox"/>					
						-	-					