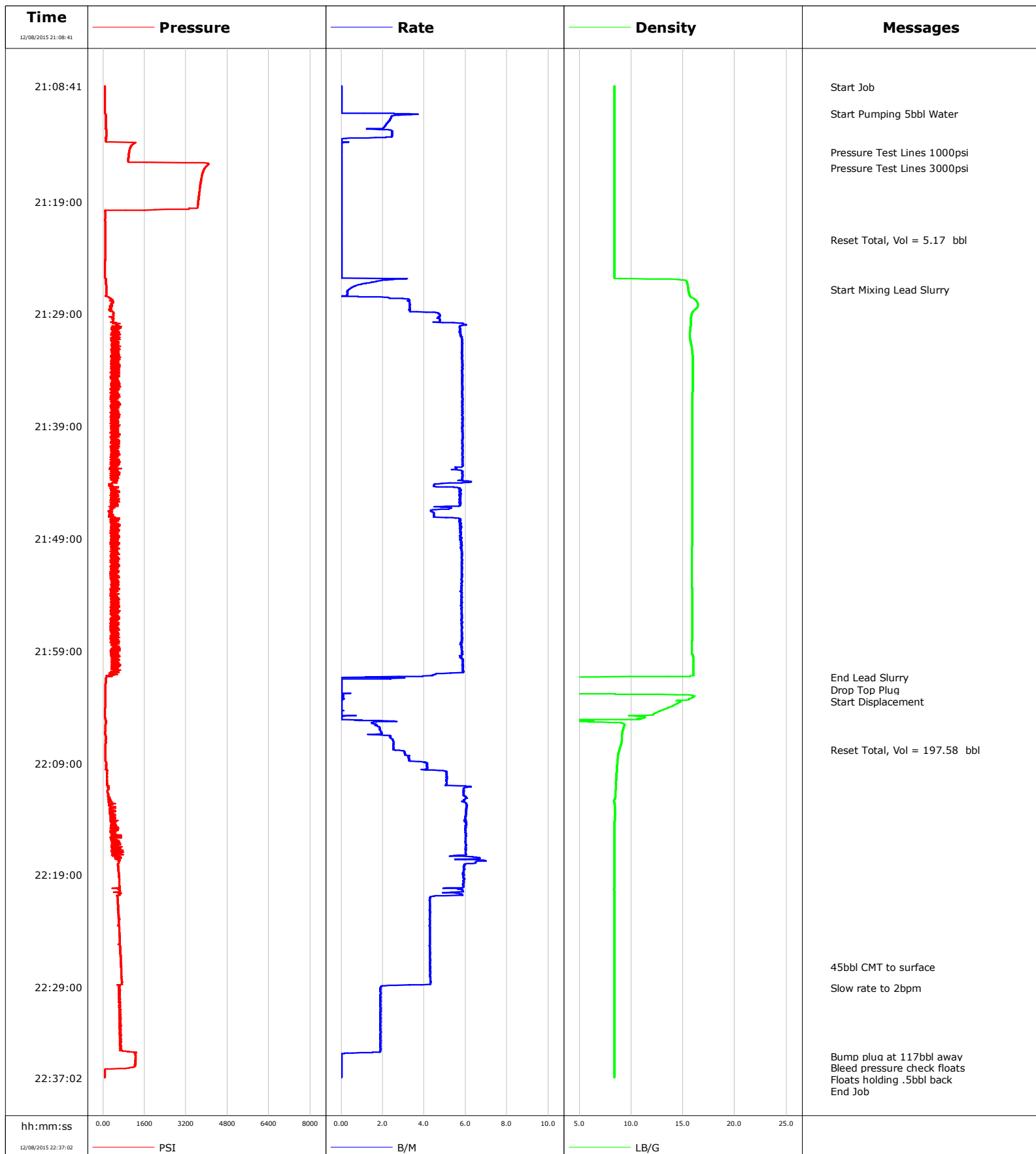


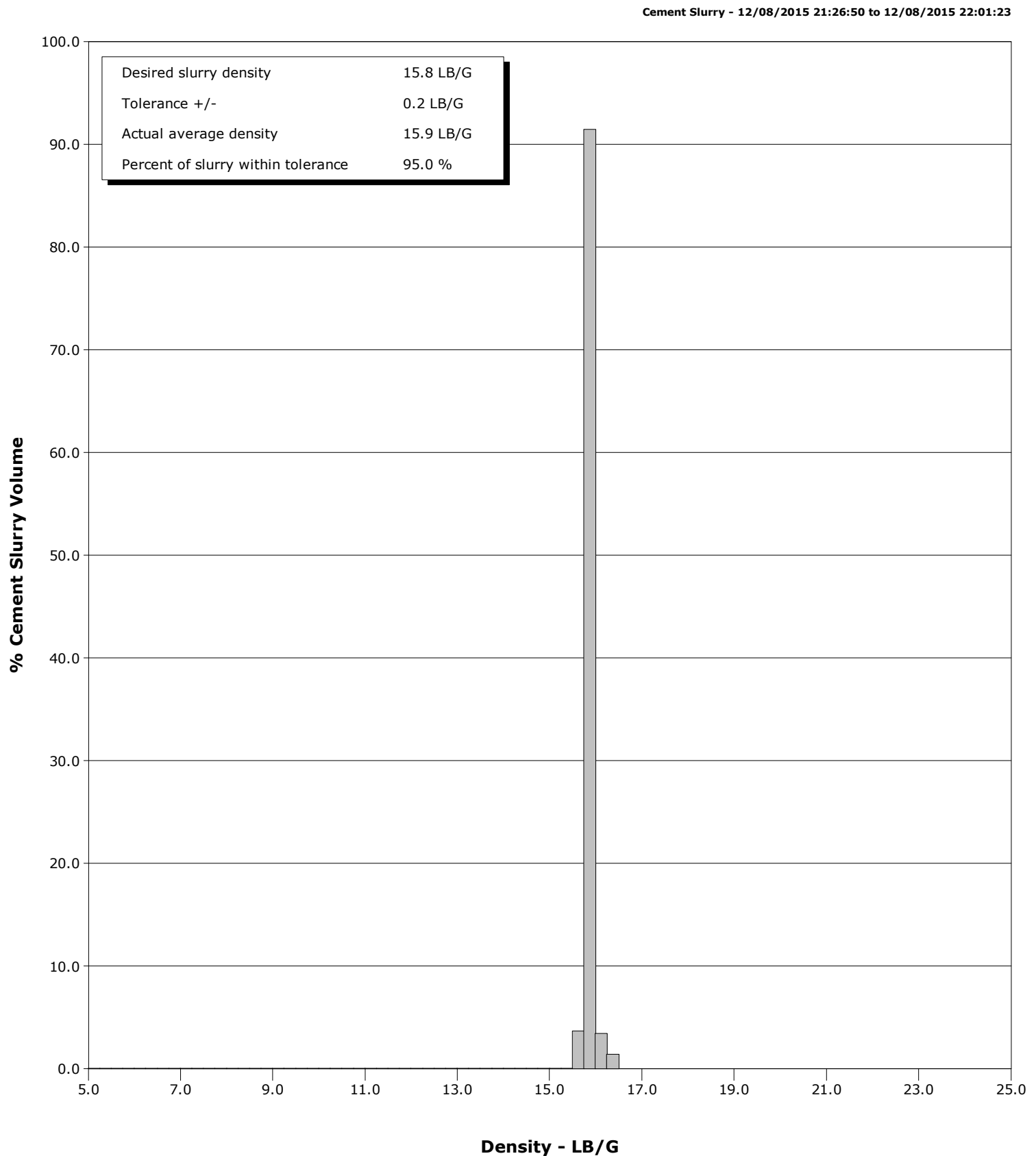
Well Fairview #6
Field DJ
Engineer Chris Valerio/Mike Reedy
Country United States

Client Extraction
SIR No. CWJN-01530
Job Type Surface
Job Date 12-08-2015



Well Fairview #6
Field DJ
Engineer Chris Valerio/Mike Reedy
Country United States

Client Extraction
SIR No. CWJN-01530
Job Type Surface
Job Date 12-08-2015



Cementing Service Report

				Customer Extraction				Job Number CWJN-01530			
Well Fairview #6 #6			Location (legal)			Schlumberger Location			Job Start Dec/08/2015		
Field DJ		Formation Name/Type Shale		Deviation deg		Bit Size 13.5 in		Well MD 1562.0 ft		Well TVD 1562.0 ft	
County Weld		State/Province Colorado		BHP psi		BHST 100 degF		BHCT 84 degF		Pore Press. Gradient lb/gal	
Well Master 0631637456		API/UWI 05123415190000									
Rig Name Savanna #802		Drilled For Oil		Service Via Land		Casing/ Liner					
						Depth, ft		Size, in		Weight, lb/ft	
Offshore Zone		Well Class New		Well Type Development		1562.0		9.6		36.0	
						0.0		0.0		0.0	
Drilling Fluid Type Other		Max. Density lb/gal		Plastic Viscosity cP		Tubing/Drill Pipe					
						T/D		Depth, ft		Size, in	
Service Line Cementing		Job Type Surface									
Max. Allowed Tub. Press 2500 psi		Max. Allowed Ann. Press psi		WH Connection Single Cement head		Perforations/Open Hole					
						Top, ft		Bottom, ft		shot/ft	
						ft		ft			
						ft		ft			
						ft		ft			
						Treat Down Casing		Displacement 117.4 bbl		Packer Type	
										Packer Depth ft	
						Tubing Vol. bbl		Casing Vol. 120.7 bbl		Annular Vol. 135.8 bbl	
										Openhole Vol. bbl	
Casing/Tubing Secured <input checked="" type="checkbox"/>		1 Hole Vol. Circulated prior to Cement <input checked="" type="checkbox"/>		Casing Tools				Squeeze Job			
Lift Pressure 773 psi				Shoe Type Float				Squeeze Type			
Pipe Rotated <input type="checkbox"/>		Pipe Reciprocated <input type="checkbox"/>		Shoe Depth 1562.0 ft				Tool Type			
No. Centralizers		Top Plugs 1		Bottom Plugs		Stage Tool Type				Tool Depth ft	
Cement Head Type Single						Stage Tool Depth ft				Tail Pipe Size in	
Job Scheduled For Dec/08/2015 14:30		Arrived on Location Dec/08/2015 14:30		Leave Location Dec/08/2015 23:30		Collar Type Float				Tail Pipe Depth ft	
						Collar Depth 1520.0 ft				Sqz. Total Vol. bbl	
Date	Time 24-hr clock	Treating Pressure PSI	Flow Rate B/M	Density LB/G	Volume BBL	Message					
12/08/2015	21:08:41	66	0.0	8.38	0.0	Started Acquisition					
12/08/2015	21:08:44	66	0.0	8.38	0.0	Start Job					
12/08/2015	21:11:08	68	1.1	8.38	0.0	Start Pumping 5bbl Water					
12/08/2015	21:13:41	207	0.4	8.38	5.1						
12/08/2015	21:14:38	997	0.0	8.38	5.2	Pressure Test Lines 1000psi					
12/08/2015	21:16:00	3932	0.0	8.37	5.2	Pressure Test Lines 3000psi					
12/08/2015	21:18:41	3685	0.0	8.38	5.2						
12/08/2015	21:22:23	93	0.0	8.37	5.2	Reset Total, Vol = 5.17 bbl					
12/08/2015	21:23:41	94	0.0	8.37	5.2						
12/08/2015	21:26:50	122	0.4	15.50	6.4	Start Mixing Lead Slurry					
12/08/2015	21:28:41	292	3.3	16.08	10.4						
12/08/2015	21:33:41	651	5.9	15.93	38.0						
12/08/2015	21:38:41	486	5.8	15.87	67.2						
12/08/2015	21:43:41	438	5.8	15.88	96.3						
12/08/2015	21:48:41	539	5.8	15.87	123.6						
12/08/2015	21:53:41	380	5.8	15.87	152.6						
12/08/2015	21:58:41	478	5.8	15.85	181.6						
12/08/2015	22:01:23	126	0.0	3.44	196.7	End Lead Slurry					
12/08/2015	22:01:26	112	3.1	2.87	196.8	Drop Top Plug					
12/08/2015	22:01:28	111	2.3	2.70	196.9	Start Displacement					
12/08/2015	22:03:41	87	0.0	14.49	197.1						

Well			Field		Job Start	Customer		Job Number
Fairview #6 #6			DJ		Dec/08/2015	Extraction		CWJN-01530
Date	Time 24-hr clock	Treating Pressure PSI	Flow Rate B/M	Density LB/G	Volume BBL	Message		
12/08/2015	22:08:41	88	3.3	8.68	205.3			
12/08/2015	22:13:41	288	6.0	8.41	232.0			
12/08/2015	22:18:41	601	5.9	8.37	262.2			
12/08/2015	22:23:41	621	4.3	8.37	286.9			
12/08/2015	22:27:08	693	4.3	8.38	301.6	45bbl CMT to surface		
12/08/2015	22:28:41	724	4.3	8.38	308.3			
12/08/2015	22:29:03	608	1.9	8.38	309.3	Slow rate to 2bpm		
12/08/2015	22:33:41	646	1.9	8.38	318.0			
12/08/2015	22:35:10	1245	0.0	8.38	320.2	Bump plug at 117bbl away		
12/08/2015	22:36:07	1150	0.0	8.38	320.2	Bleed pressure check floats		
12/08/2015	22:36:45	70	0.0	8.38	320.2	Floats holding .5bbl back		

Post Job Summary

Average Pump Rates, bbl/min					Volume of Fluid Injected, bbl							
Slurry 4.7	N2	Mud	Maximum Rate 7.0	Total Slurry 175.0	Mud 0.0	Spacer 5.0	N2					
Treating Pressure Summary, psi					Breakdown Fluid							
Maximum 1245	Final 70	Average 563	Bump Plug to 1245	Breakdown	Type	Volume bbl	Density lb/gal					
Avg. N2 Percent %	Designed Slurry Volume 175.0 bbl	Displacement 117.0 bbl	Mix Water Temp 52 degF	Cement Circulated to Surface? <input checked="" type="checkbox"/>		Volume 45.0 bbl						
				Washed Thru Perfs <input type="checkbox"/>		To ft						
Customer or Authorized Representative Shawn McIntyre			Schlumberger Supervisor Chris Valerio/Mike Reedy			Circulation Lost <input type="checkbox"/>	Job Completed <input checked="" type="checkbox"/>					
						-	-					