



MS Energy Services

123 W Oregon Ln  
Glendive MT, 59330

Fairview #5

Scale 2":100' - MD

1/17/2016 10:43 PM

Oper. Company: Extraction Oil & Gas

Well: Fairview #5

Field: DJ Basin

Rig: Savanna #802

Well ID: 05-123-41521

Job Number: DDMT-160025

State: Colorado

County: Weld

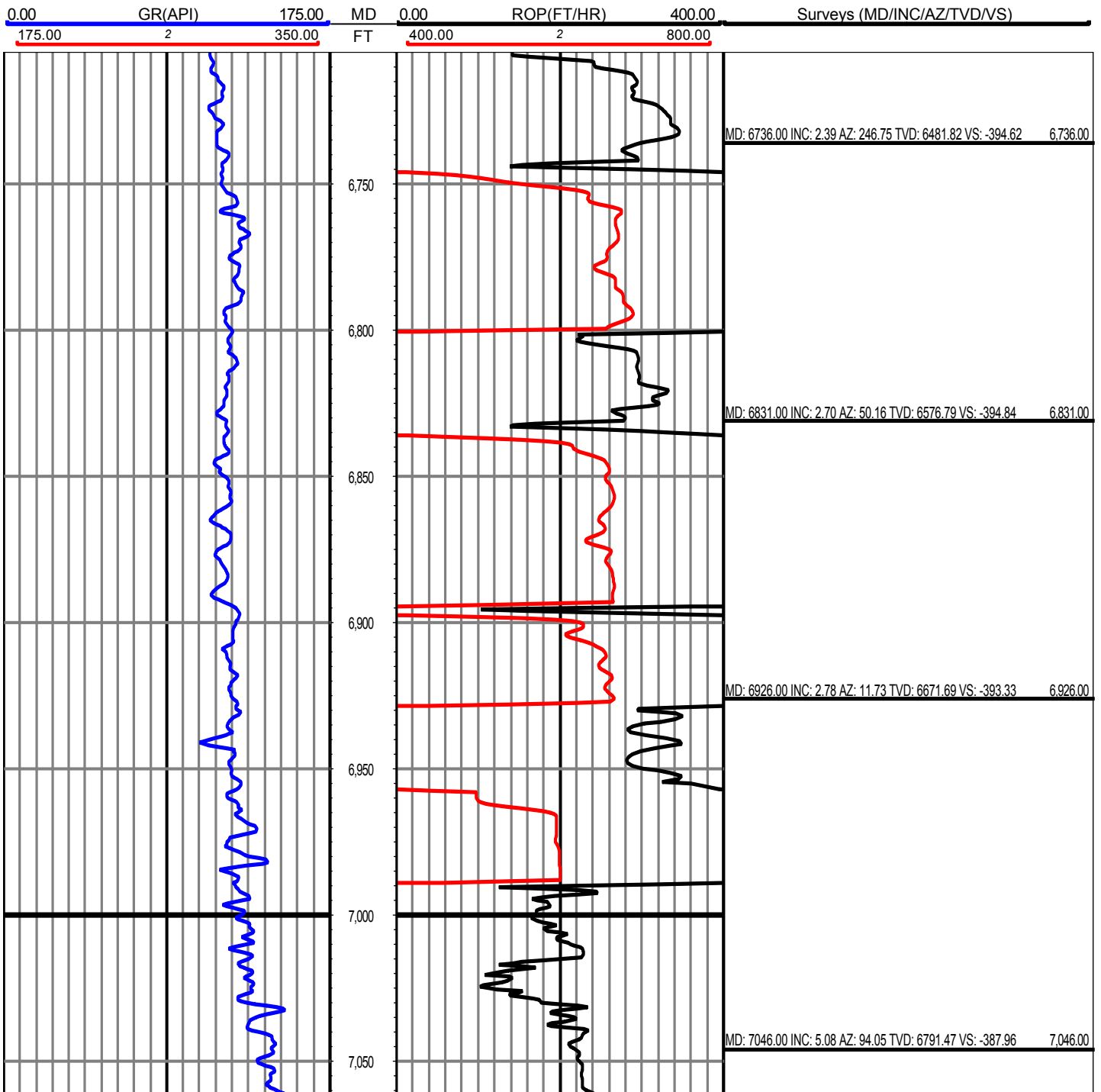
Country: USA

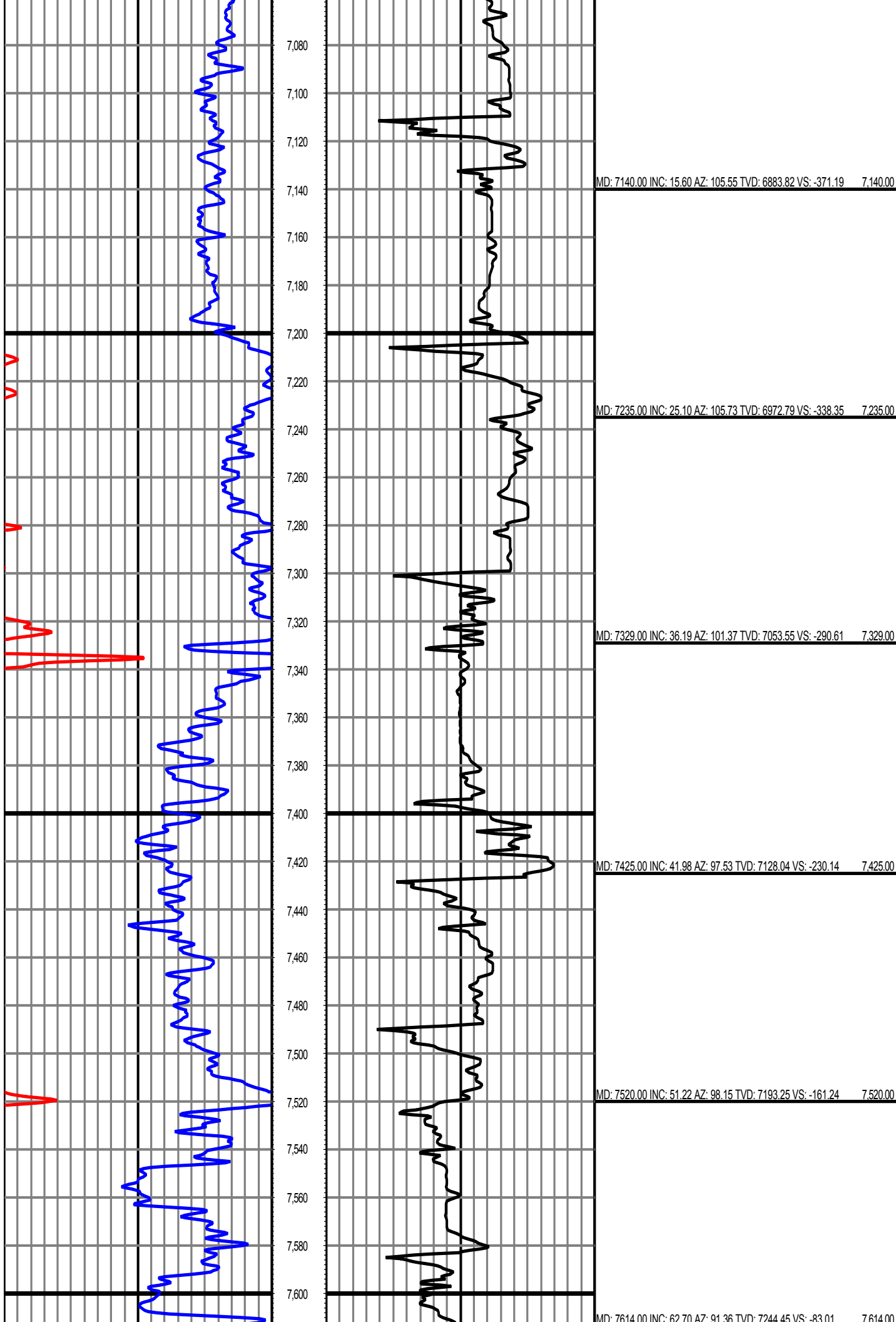
Location: Weld Co. CO

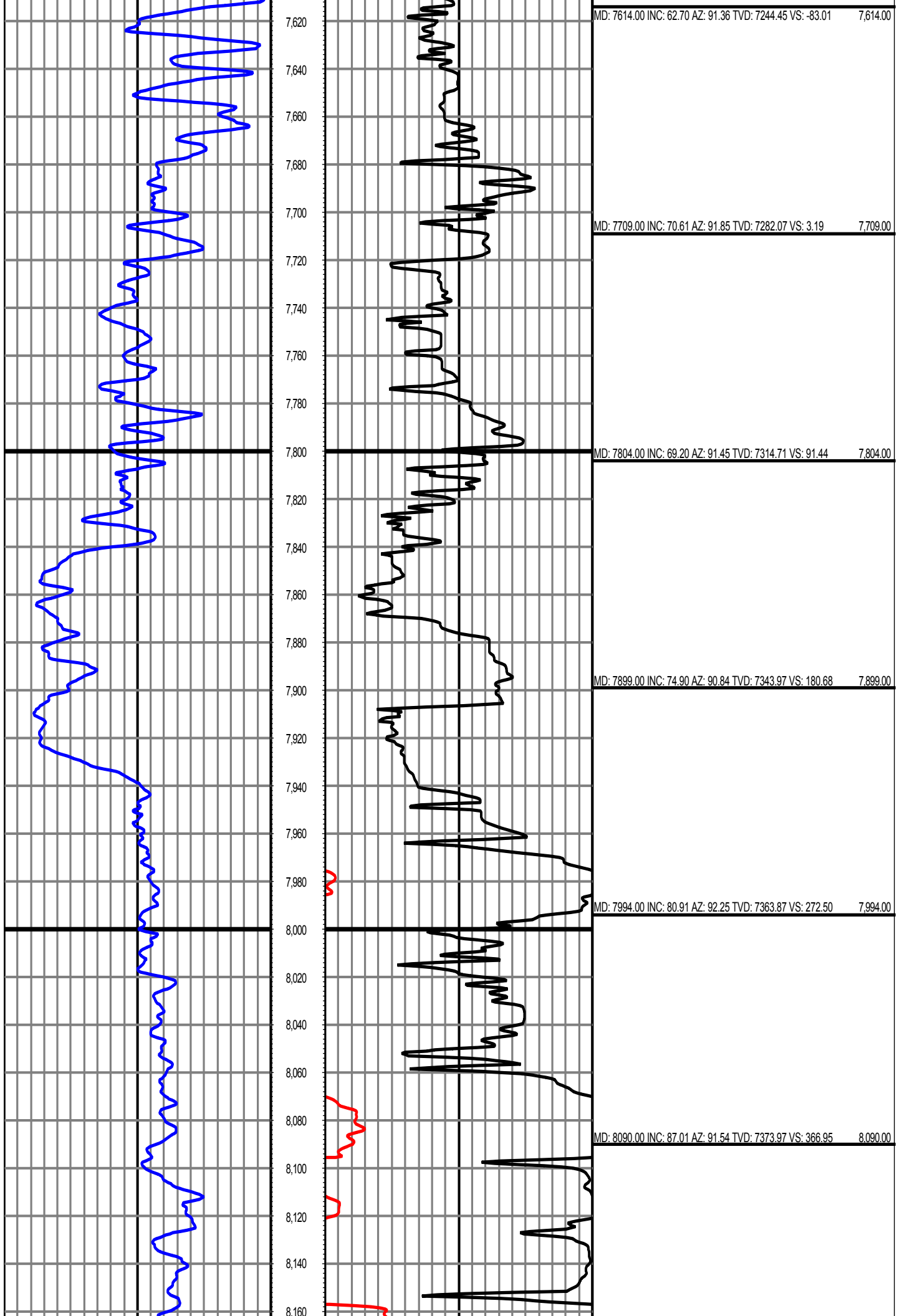
Start Date: 01/15/2016 12:30:00

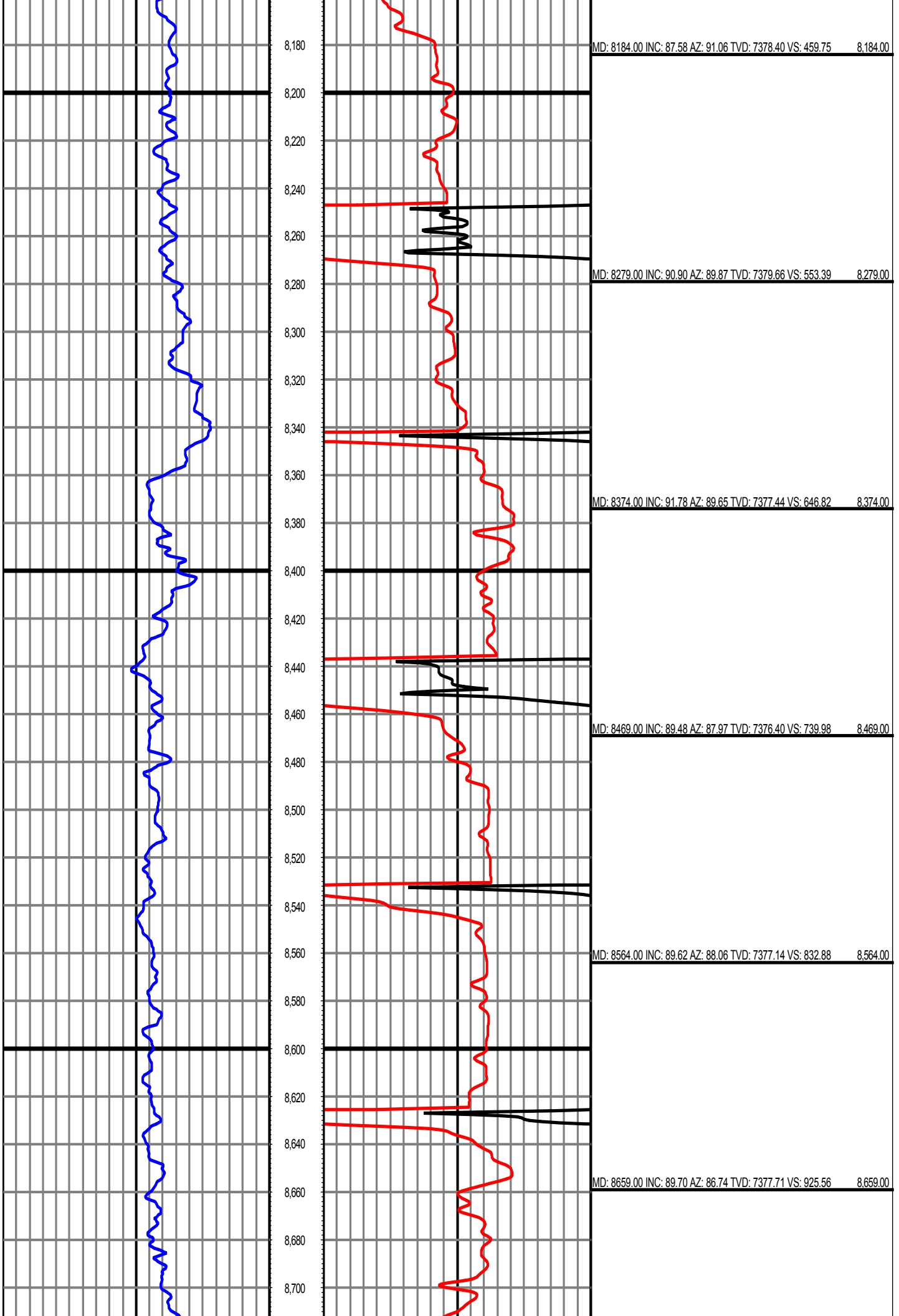
End Date:

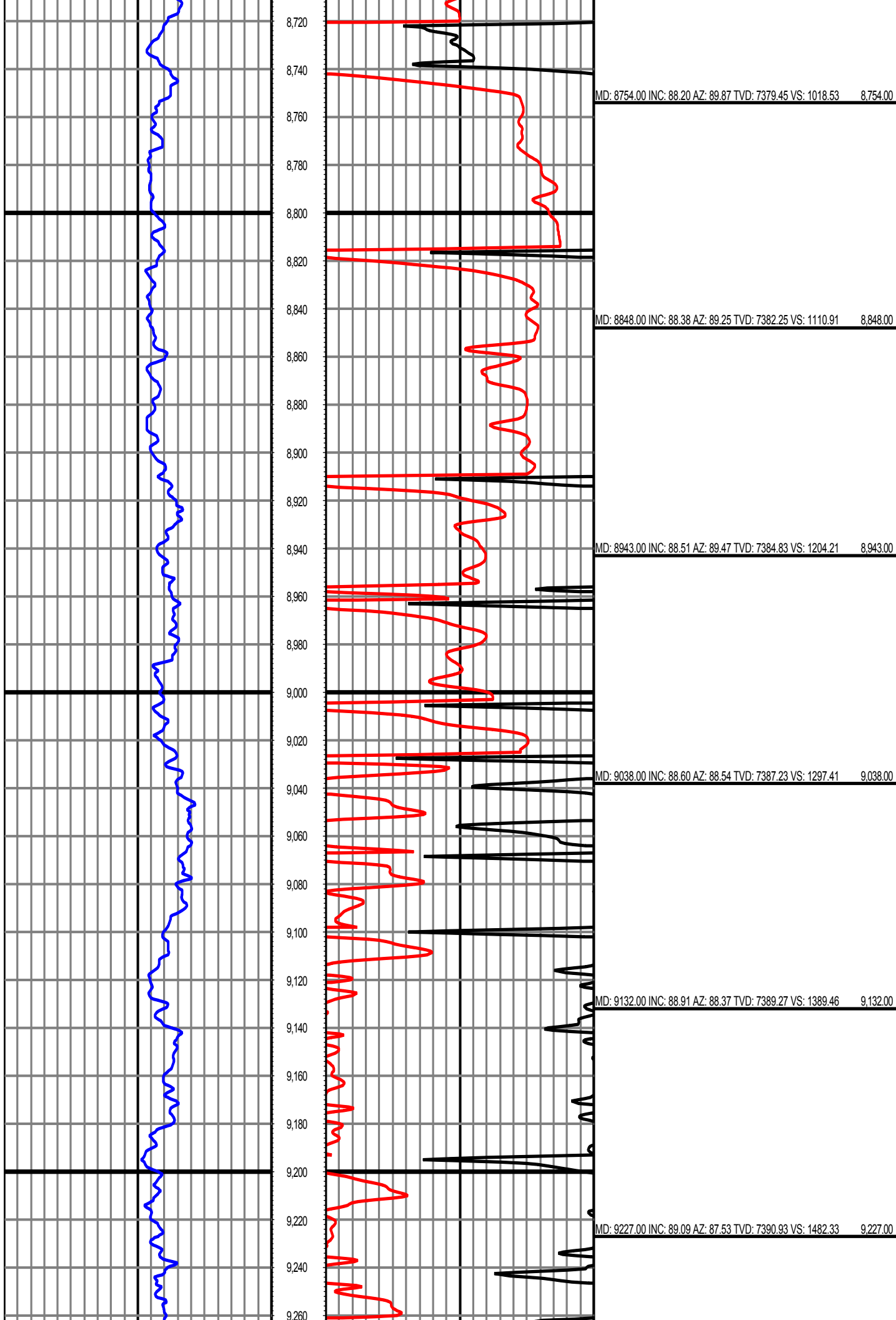
*All interpretations are opinions based on inferences from electrical or other measurements and we cannot and do not guarantee the accuracy or correctness of any interpretation, and we shall not except in the case of gross or willful negligence on our part, be liable or responsible for any loss, cost damages or expenses incurred or sustained by anyone resulting from an interpretation made by any of our officers, agents, or employees.*

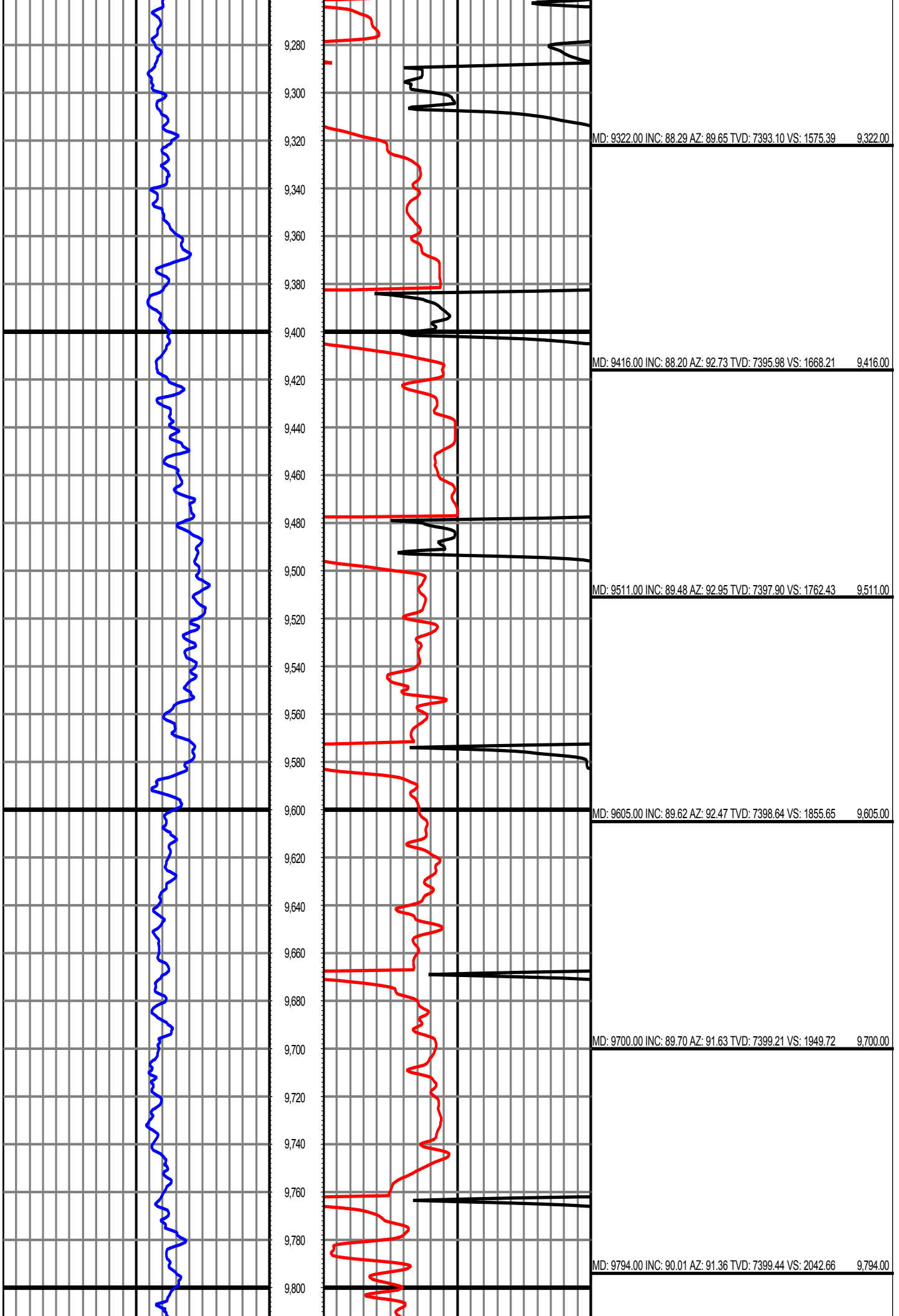


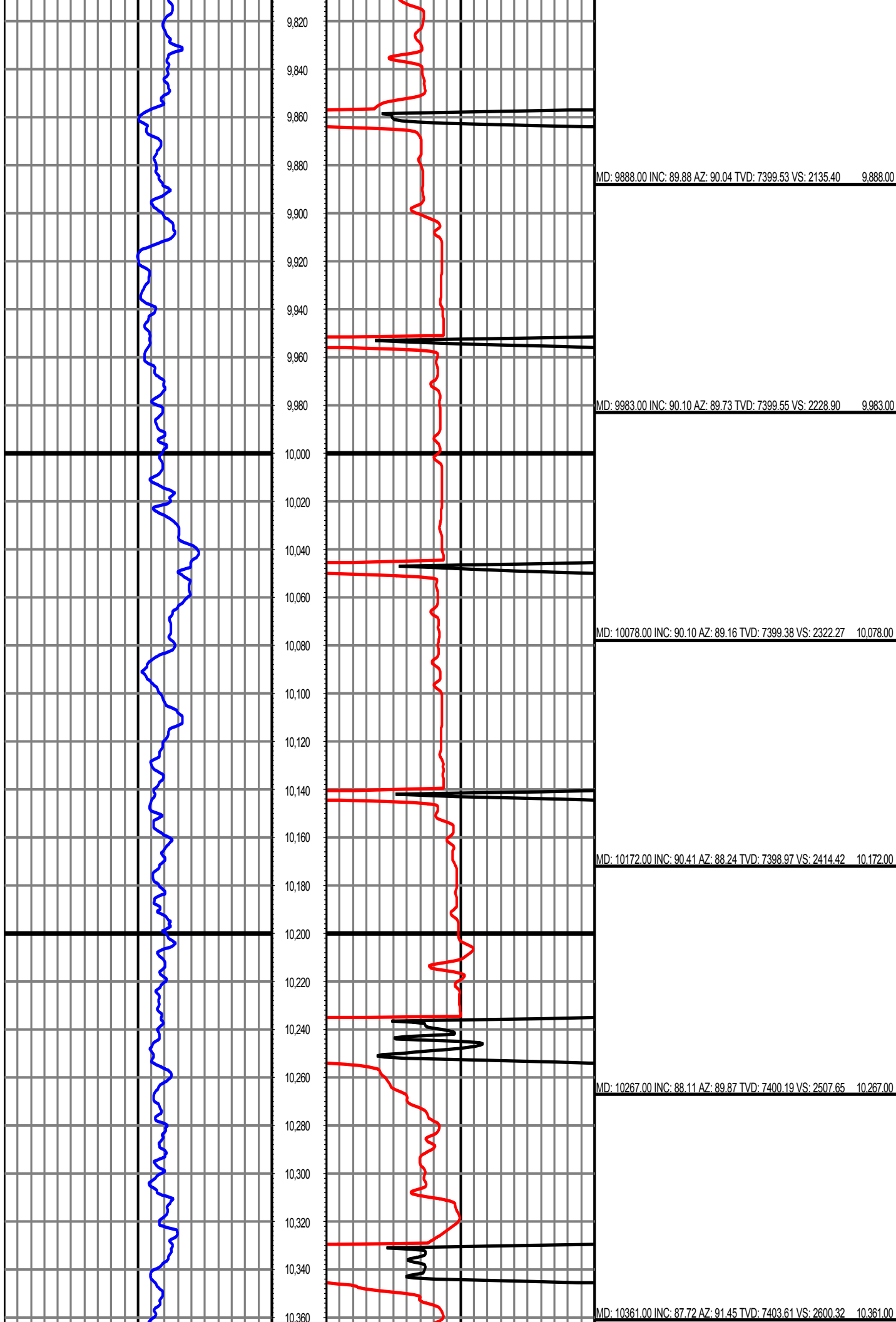


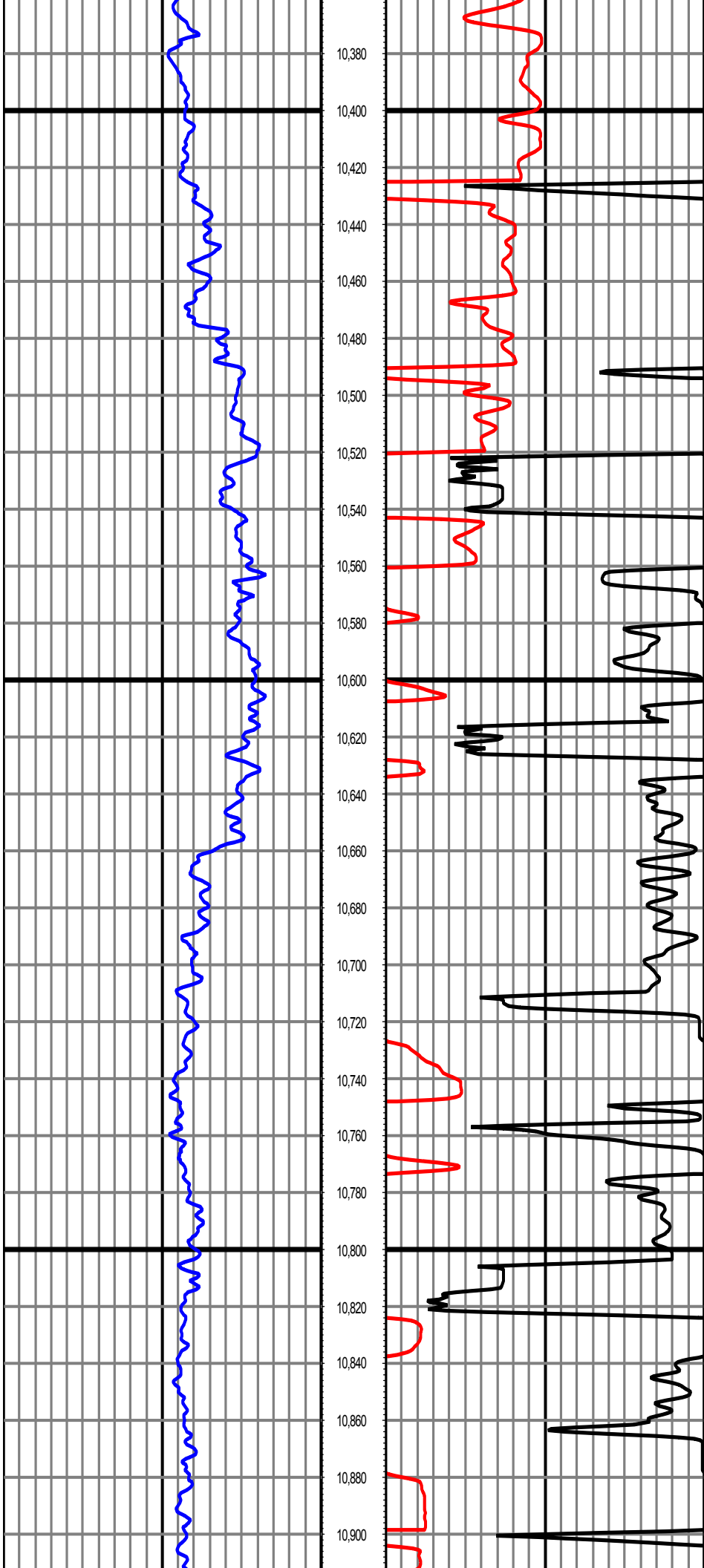












MD: 10361.00 INC: 87.72 AZ: 91.45 TVD: 7403.61 VS: 2600.32 10,361.00

MD: 10456.00 INC: 87.41 AZ: 91.36 TVD: 7407.65 VS: 2694.15 10,456.00

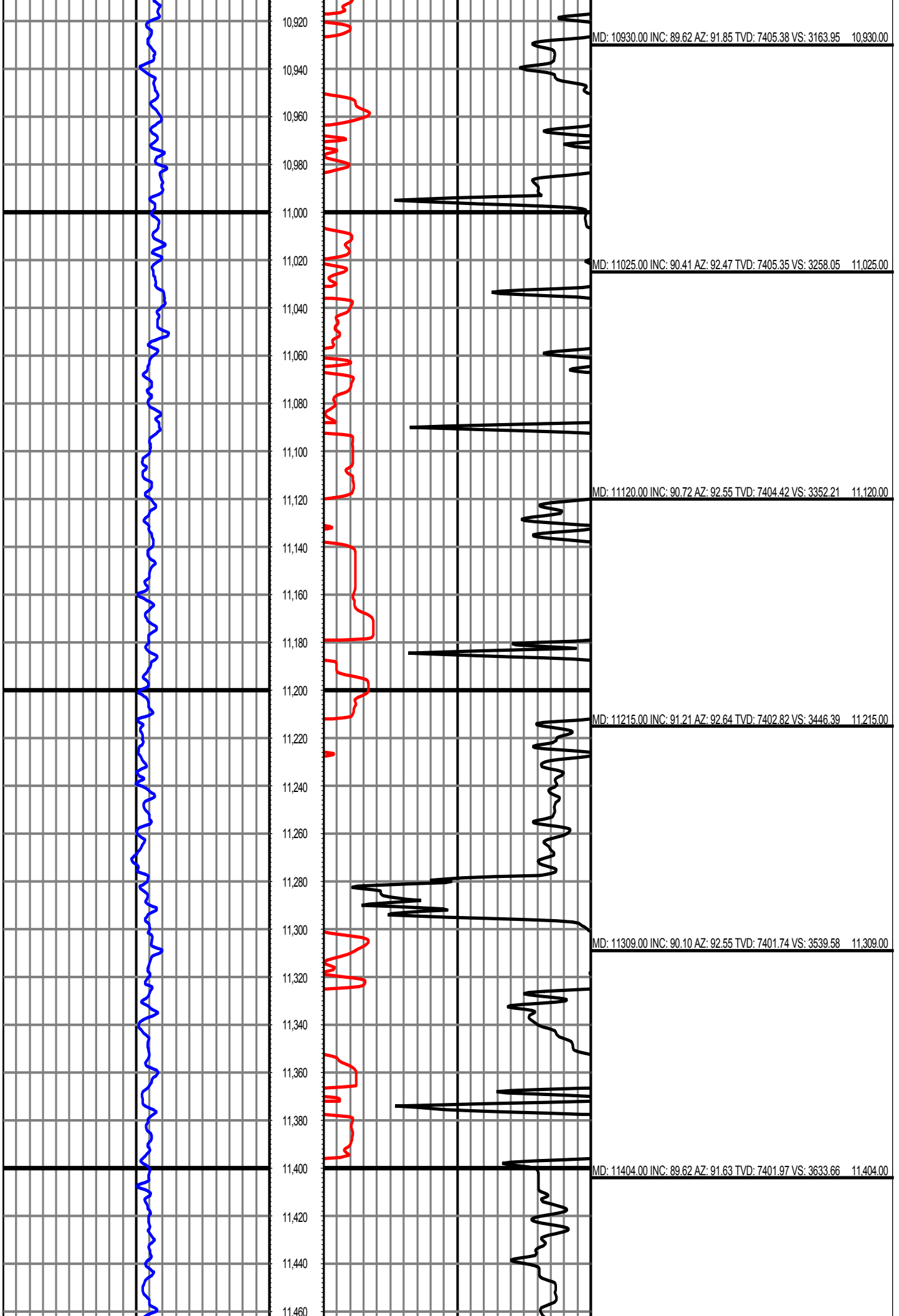
MD: 10550.00 INC: 89.79 AZ: 92.16 TVD: 7409.95 VS: 2787.12 10,550.00

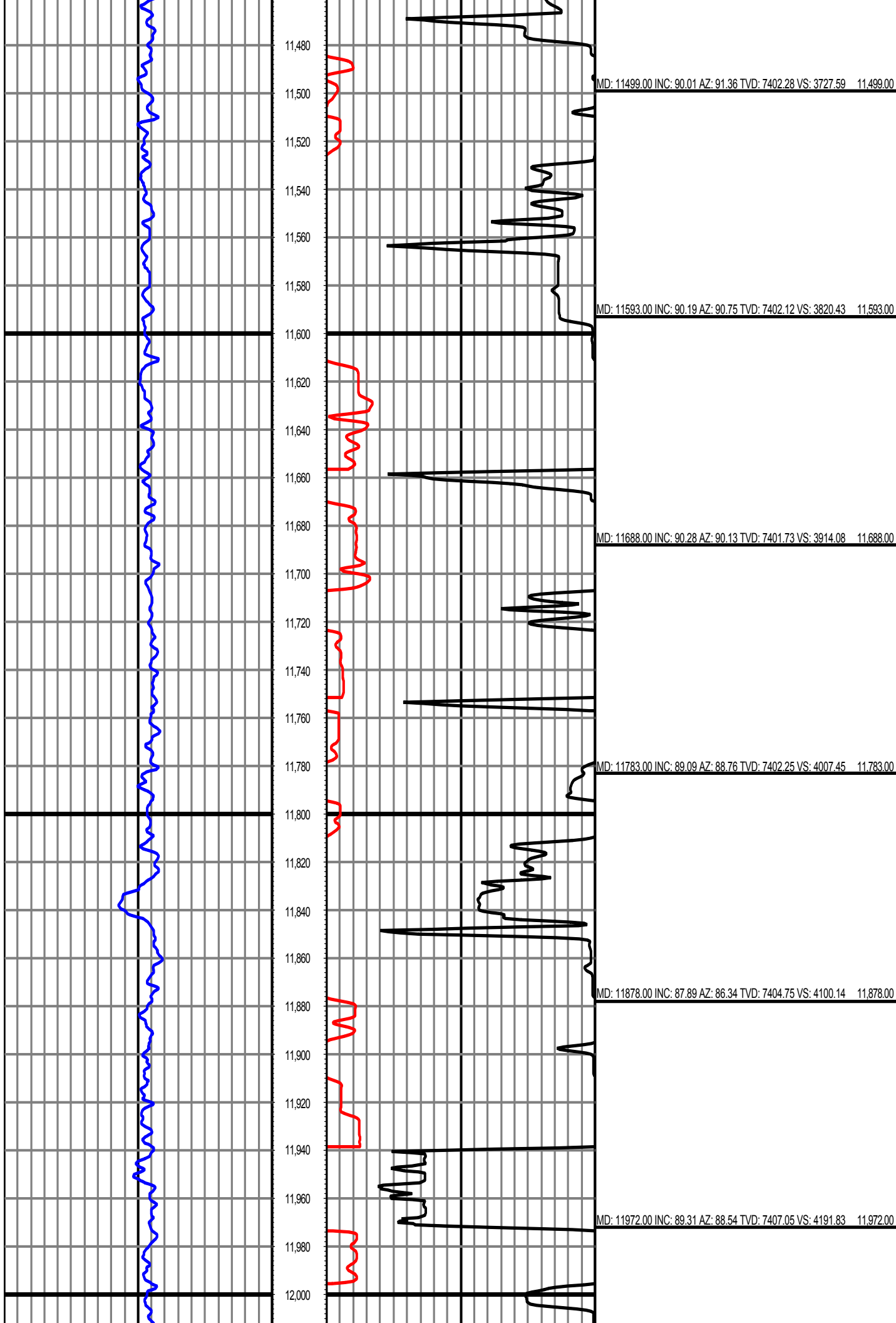
MD: 10645.00 INC: 90.99 AZ: 93.26 TVD: 7409.30 VS: 2881.33 10,645.00

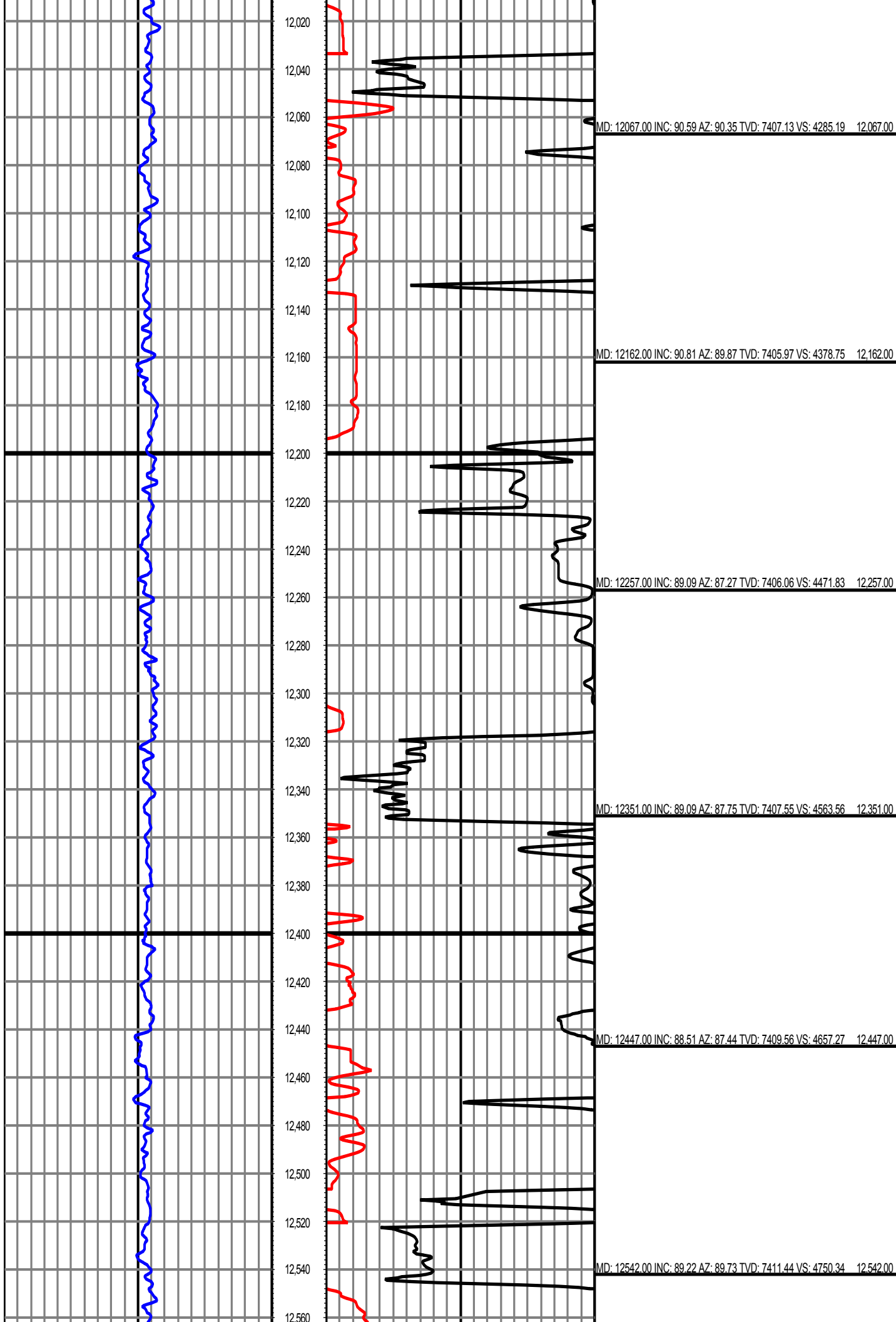
MD: 10740.00 INC: 92.18 AZ: 93.57 TVD: 7406.67 VS: 2975.65 10,740.00

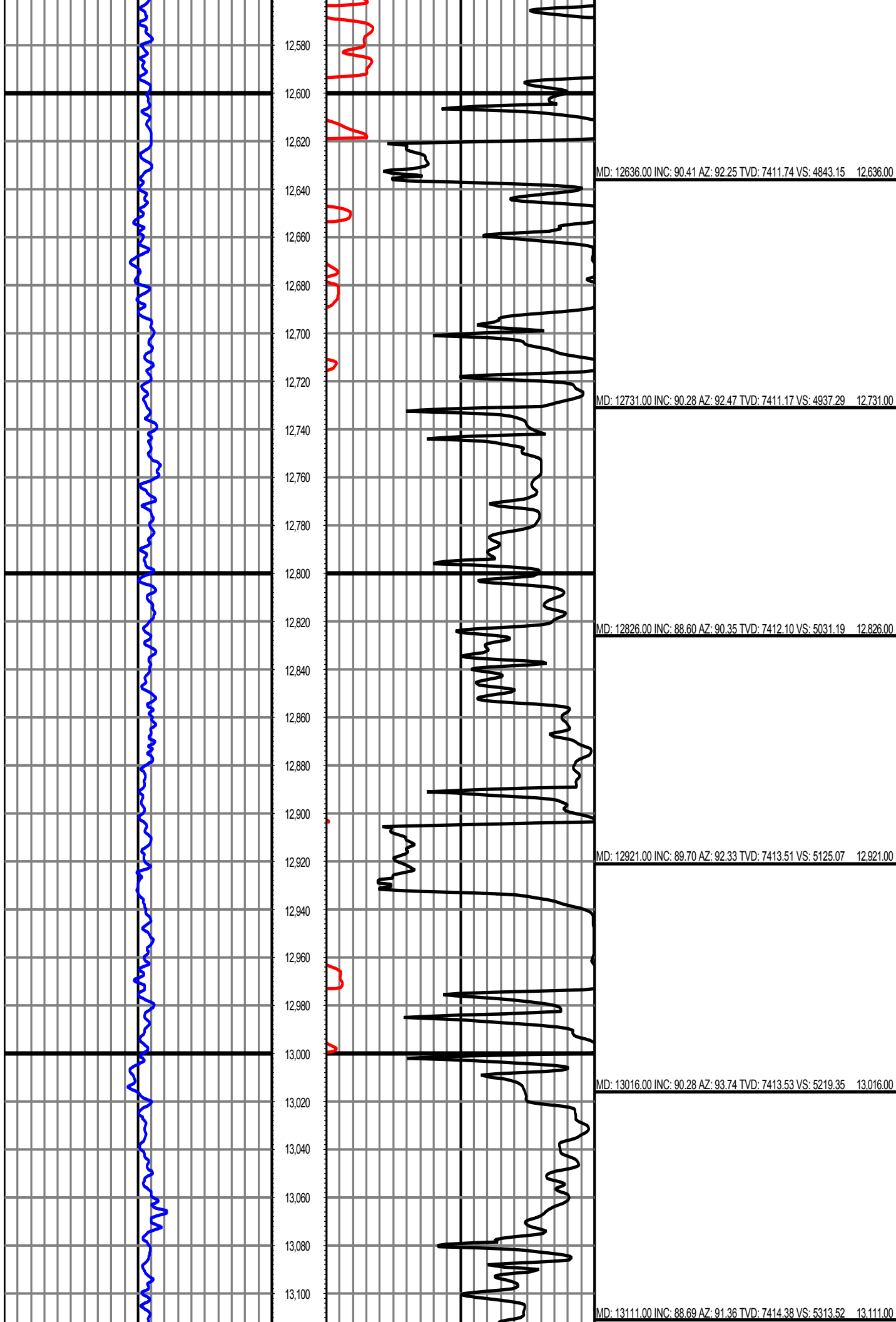
MD: 10835.00 INC: 89.88 AZ: 92.25 TVD: 7404.96 VS: 3069.89 10,835.00











MD: 13111.00 INC: 88.69 AZ: 91.36 TVD: 7414.38 VS: 5313.52 13,111.00

MD: 13205.00 INC: 88.29 AZ: 90.75 TVD: 7416.86 VS: 5406.32 13,205.00

MD: 13300.00 INC: 90.72 AZ: 92.86 TVD: 7417.68 VS: 5500.32 13,300.00

MD: 13395.00 INC: 90.50 AZ: 93.17 TVD: 7416.67 VS: 5594.59 13,395.00

MD: 13489.00 INC: 90.81 AZ: 92.86 TVD: 7415.59 VS: 5687.87 13,489.00

MD: 13584.00 INC: 89.31 AZ: 92.16 TVD: 7415.49 VS: 5782.04 13,584.00

