

EXTRACTION OIL & GAS

Location: COLORADO Slot: SLOT#03 FAIRVIEW 3 (1855'FSL & 474'FWL, SEC.05)
Field: WELD COUNTY (NAD83/TRUE NORTH) Well: FAIRVIEW 3
Facility: SEC.05-T02N-R68W Wellbore: FAIRVIEW 3 PWB

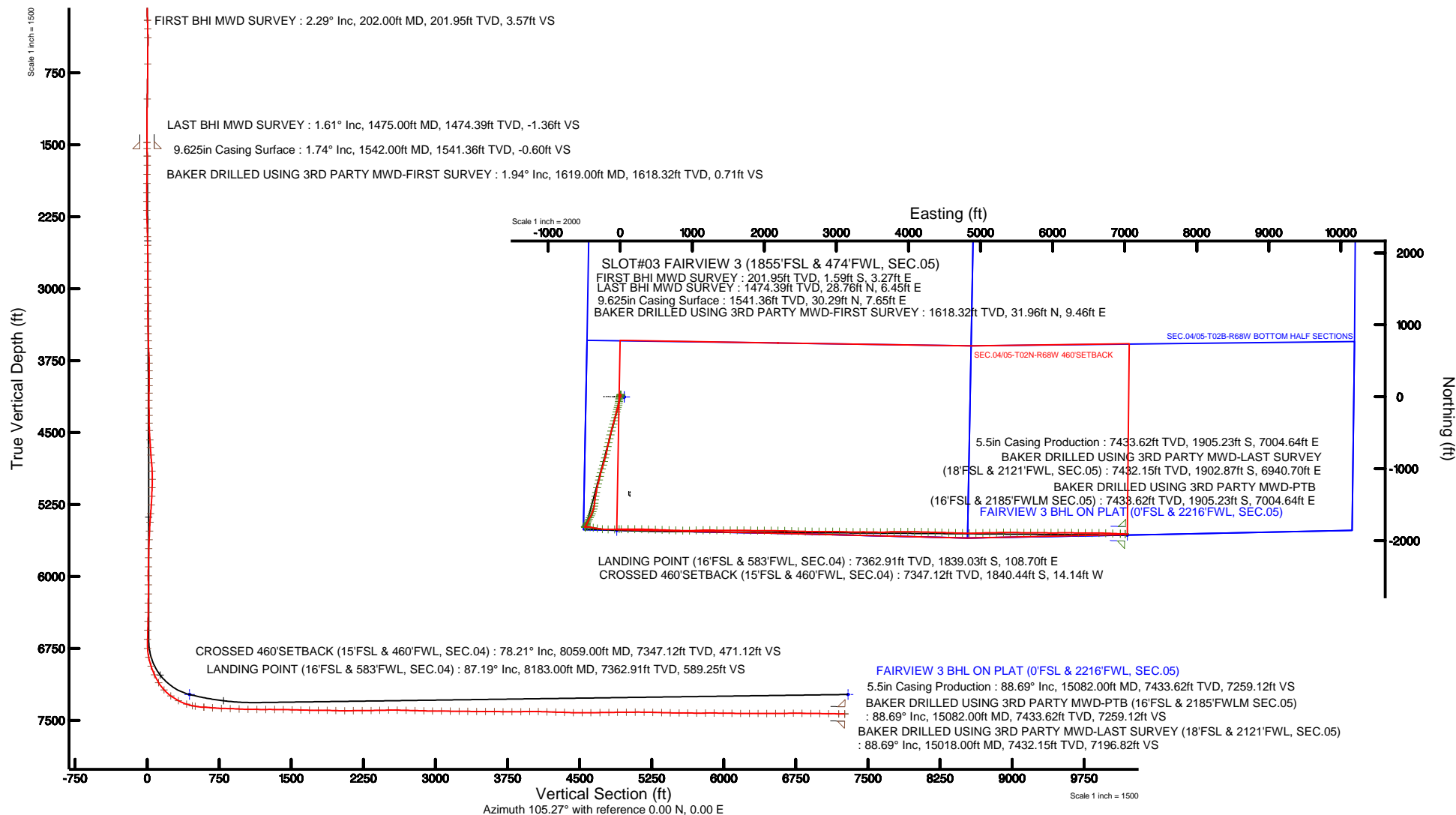
Plot reference wellpath is FAIRVIEW 3 PWP (REV-B.0)

True vertical depths are referenced to SAVANNA 802 (20'KB) (RKB)	* = Wellpath was transformed from a different geodetic datum
Measured depths are referenced to SAVANNA 802 (20'KB) (RKB)	North Reference: True north
SAVANNA 802 (20'KB) (RKB) to Mean Sea Level: 4963 feet	Scale: True distance
Mean Sea Level to Mud line (At Slot: SLOT#03 FAIRVIEW 3 (1855'FSL & 474'FWL, SEC.05)): 0 feet	Depths are in feet
Coordinates are in feet referenced to Slot	Created by: ingnjmr on 2016-02-23
	Database: WA_DEN_Denver_Defn



BGGM (1945.0 to 2017.0) Dip: 66.72° Field: 52416.6 nT
Magnetic North is 8.65 degrees East of True North (at 11/23/2015)

To correct azimuth from Magnetic to True add 8.65 degrees





Actual Wellpath Report

FAIRVIEW 3 AWP

Page 1 of 7



REFERENCE WELLPATH IDENTIFICATION

Operator	EXTRACTION OIL & GAS	Slot	SLOT#03 FAIRVIEW 3 (1855'FSL & 474'FWL, SEC.05)
Area	COLORADO	Well	FAIRVIEW 3
Field	WELD COUNTY (NAD83/TRUE NORTH)	Wellbore	FAIRVIEW 3 AWB
Facility	SEC.05-T02N-R68W		

REPORT SETUP INFORMATION

Projection System	NAD83 / Lambert Colorado SP, Northern Zone (501), US feet	Software System	WellArchitect® 5.0
North Reference	True	User	Ingmjmr
Scale	0.999958	Report Generated	2/23/2016 at 11:09:03 AM
Convergence at slot	0.31° East	Database/Source file	WA_DEN_Denver_Defn/FAIRVIEW_3_AWP.xml

WELLPATH LOCATION

	Local coordinates		Grid coordinates		Geographic coordinates	
	North[ft]	East[ft]	Easting[US ft]	Northing[US ft]	Latitude	Longitude
Slot Location	1.01	-55.90	3129991.37	1303569.96	40°09'56.732"N	105°02'05.521"W
Facility Reference Pt			3130047.27	1303569.24	40°09'56.722"N	105°02'04.801"W
Field Reference Pt			3185481.27	1419166.81	40°28'55.560"N	104°49'59.556"W

WELLPATH DATUM

Calculation method	Minimum curvature	SAVANNA 802 (20'KB) (RKB) to Facility Vertical Datum	4963.00ft
Horizontal Reference Pt	Slot	SAVANNA 802 (20'KB) (RKB) to Mean Sea Level	4963.00ft
Vertical Reference Pt	SAVANNA 802 (20'KB) (RKB)	SAVANNA 802 (20'KB) (RKB) to Mud Line at Slot (SLOT#03 FAIRVIEW 3 (1855'FSL & 474'FWL, SEC.05))	4963.00ft
MD Reference Pt	SAVANNA 802 (20'KB) (RKB)	Section Origin	N 0.00, E 0.00 ft
Field Vertical Reference	Mean Sea Level	Section Azimuth	105.27°

REFERENCE WELLPATH IDENTIFICATION

Operator	EXTRACTION OIL & GAS	Slot	SLOT#03 FAIRVIEW 3 (1855'FSL & 474'FWL, SEC.05)
Area	COLORADO	Well	FAIRVIEW 3
Field	WELD COUNTY (NAD83/TRUE NORTH)	Wellbore	FAIRVIEW 3 AWB
Facility	SEC.05-T02N-R68W		

WELLPATH DATA (152 stations) † = interpolated/extrapolated station

MD [ft]	Inclination [°]	Azimuth [°]	TVD [ft]	Vert Sect [ft]	North [ft]	East [ft]	DLS [°/100ft]	Comments
0.00†	0.000	115.900	0.00	0.00	0.00	0.00	0.00	
20.00	0.000	115.900	20.00	0.00	0.00	0.00	0.00	
202.00	2.290	115.900	201.95	3.57	-1.59	3.27	1.26	FIRST BHI MWD SURVEY
293.00	1.230	111.660	292.91	6.33	-2.74	5.81	1.17	
386.00	0.590	12.650	385.90	7.30	-2.64	6.85	1.55	
657.00	1.370	355.660	656.86	6.15	1.95	6.91	0.30	
1024.00	2.450	348.200	1023.65	1.11	14.00	4.97	0.30	
1475.00	1.610	32.940	1474.39	-1.36	28.76	6.45	0.38	LAST BHI MWD SURVEY
1619.00	1.940	51.750	1618.32	0.71	31.96	9.46	0.46	BAKER DRILLED USING 3RD PARTY MWD-FIRST SURVEY
1714.00	3.930	207.170	1713.26	0.99	30.06	9.24	6.05	
1809.00	5.700	210.350	1807.92	-0.91	23.09	5.36	1.88	
1904.00	5.790	205.980	1902.45	-3.02	14.71	0.88	0.47	
1999.00	7.160	200.830	1996.84	-4.49	4.87	-3.32	1.56	
2094.00	9.500	191.620	2090.83	-4.56	-8.34	-7.01	2.83	
2188.00	10.780	193.070	2183.36	-3.73	-24.51	-10.56	1.39	
2281.00	12.370	186.420	2274.47	-1.86	-42.88	-13.64	2.23	
2376.00	13.610	189.680	2367.04	0.79	-64.01	-16.66	1.52	
2471.00	16.000	189.280	2458.88	3.25	-87.95	-20.65	2.52	
2565.00	18.160	191.530	2548.73	5.56	-115.10	-25.67	2.40	
2660.00	19.220	195.720	2638.72	6.40	-144.65	-32.86	1.80	
2755.00	20.190	196.690	2728.16	5.87	-175.41	-41.81	1.08	
2849.00	23.510	194.000	2815.40	5.89	-209.15	-51.00	3.69	
2944.00	25.060	194.090	2901.99	6.72	-247.05	-60.49	1.63	
3039.00	27.750	195.060	2987.07	7.22	-287.93	-71.13	2.87	
3134.00	28.990	193.780	3070.66	7.90	-331.65	-82.36	1.45	
3229.00	31.290	197.170	3152.82	7.68	-377.59	-95.13	3.01	
3324.00	32.440	195.670	3233.50	6.69	-425.69	-109.30	1.47	
3419.00	33.630	193.640	3313.14	7.26	-475.80	-122.38	1.71	
3514.00	35.090	194.000	3391.56	8.61	-527.86	-135.20	1.55	
3609.00	36.630	193.250	3468.55	10.22	-581.94	-148.30	1.69	
3704.00	37.210	192.900	3544.50	12.41	-637.53	-161.21	0.65	
3798.00	36.010	192.060	3619.96	15.13	-692.26	-173.33	1.38	
3893.00	35.660	190.740	3696.98	18.88	-746.78	-184.32	0.89	
3988.00	33.450	194.220	3775.22	21.55	-799.37	-195.92	3.12	
4083.00	32.260	196.730	3855.03	21.39	-849.04	-209.65	1.90	
4176.00	33.850	195.360	3932.97	20.72	-897.79	-223.65	1.89	
4271.00	34.600	195.280	4011.52	20.67	-949.32	-237.77	0.79	
4365.00	36.060	197.700	4088.21	19.49	-1001.43	-253.22	2.15	
4460.00	35.260	195.850	4165.40	18.03	-1054.45	-269.21	1.41	
4555.00	32.970	191.930	4244.06	19.26	-1106.13	-282.04	3.34	
4649.00	33.720	194.170	4322.58	21.25	-1156.45	-293.72	1.53	
4744.00	36.190	195.450	4400.44	21.67	-1209.06	-307.65	2.71	
4839.00	33.010	190.910	4478.64	23.56	-1261.53	-320.02	4.31	
4959.00	36.720	190.470	4577.08	29.05	-1328.93	-332.73	3.10	
5054.00	34.820	189.940	4654.16	33.94	-1383.57	-342.58	2.03	



Actual Wellpath Report

FAIRVIEW 3 AWP

Page 3 of 7



REFERENCE WELLPATH IDENTIFICATION

Operator	EXTRACTION OIL & GAS	Slot	SLOT#03 FAIRVIEW 3 (1855'FSL & 474'FWL, SEC.05)
Area	COLORADO	Well	FAIRVIEW 3
Field	WELD COUNTY (NAD83/TRUE NORTH)	Wellbore	FAIRVIEW 3 AWB
Facility	SEC.05-T02N-R68W		

WELLPATH DATA (152 stations) † = interpolated/extrapolated station

MD [ft]	Inclination [°]	Azimuth [°]	TVD [ft]	Vert Sect [ft]	North [ft]	East [ft]	DLS [°/100ft]	Comments
5148.00	31.020	187.780	4733.06	39.60	-1434.03	-350.49	4.23	
5242.00	26.820	185.930	4815.32	46.20	-1479.14	-355.96	4.57	
5337.00	25.060	189.860	4900.75	51.58	-1520.28	-361.62	2.59	
5432.00	23.550	195.890	4987.34	53.27	-1558.37	-370.27	3.06	
5527.00	23.770	200.390	5074.36	51.36	-1594.57	-382.13	1.91	
5622.00	18.120	201.620	5163.05	48.01	-1626.28	-394.26	5.97	
5717.00	18.030	207.090	5253.37	43.37	-1653.10	-406.40	1.79	
5812.00	19.350	210.570	5343.36	36.20	-1679.74	-421.10	1.82	
5907.00	14.800	207.920	5434.15	29.39	-1704.03	-434.79	4.86	
6002.00	15.070	203.650	5525.94	24.93	-1726.06	-445.43	1.19	
6097.00	13.790	207.750	5617.95	20.69	-1747.40	-455.65	1.72	
6191.00	8.480	209.070	5710.14	16.61	-1763.38	-464.24	5.66	
6286.00	9.680	200.390	5803.96	14.23	-1776.99	-470.43	1.91	
6382.00	6.140	205.280	5899.03	12.62	-1789.20	-475.44	3.75	
6476.00	6.540	193.120	5992.46	11.94	-1798.96	-478.80	1.49	
6571.00	3.840	192.230	6087.06	12.31	-1807.34	-480.70	2.84	
6666.00	1.720	200.210	6181.94	12.36	-1811.79	-481.87	2.26	
6761.00	0.490	257.100	6276.92	11.88	-1813.22	-482.76	1.59	
6856.00	1.150	319.460	6371.92	10.73	-1812.58	-483.77	1.07	
6951.00	1.810	328.670	6466.88	8.85	-1810.58	-485.17	0.74	
7045.00	1.940	329.370	6560.83	6.63	-1807.94	-486.75	0.14	
7139.00	2.390	335.190	6654.77	4.23	-1804.79	-488.39	0.53	
7234.00	2.250	114.320	6749.73	4.79	-1803.76	-487.52	4.58	
7328.00	12.240	107.760	6842.87	16.60	-1807.57	-476.32	10.65	
7424.00	18.650	86.160	6935.42	41.32	-1809.65	-451.27	8.87	
7519.00	24.220	100.440	7023.88	75.14	-1812.17	-416.90	8.00	
7613.00	32.210	100.000	7106.64	119.37	-1820.02	-373.19	8.50	
7708.00	41.940	100.400	7182.35	176.35	-1830.18	-316.90	10.25	
7803.00	55.190	95.370	7245.10	246.74	-1839.60	-246.50	14.49	
7898.00	61.640	90.130	7294.85	325.63	-1843.35	-165.75	8.25	
7993.00	73.530	88.460	7331.02	409.89	-1842.22	-78.10	12.62	
8059.00†	78.212	88.363	7347.12	471.12	-1840.44	-14.14	7.10	CROSSED 460'SETBACK (15'FSL & 460'FWL, SEC.04)
8089.00	80.340	88.320	7352.70	499.32	-1839.59	15.33	7.10	
8183.00	87.190	90.970	7362.91	589.25	-1839.03	108.70	7.81	LANDING POINT (16'FSL & 583'FWL, SEC.04)
8278.00	85.330	90.000	7369.11	680.91	-1839.83	203.49	2.21	
8373.00	88.290	90.880	7374.39	772.59	-1840.56	298.33	3.25	
8468.00	88.070	91.670	7377.41	864.72	-1842.67	393.26	0.86	
8563.00	86.920	92.250	7381.56	957.08	-1845.92	488.11	1.36	
8658.00	89.170	91.890	7384.80	1049.51	-1849.35	582.99	2.40	
8753.00	89.130	93.170	7386.21	1142.16	-1853.54	677.88	1.35	
8847.00	90.460	90.880	7386.55	1233.65	-1856.86	771.82	2.82	
8942.00	89.480	91.410	7386.60	1325.77	-1858.76	866.80	1.17	
9037.00	89.350	89.160	7387.57	1417.53	-1859.23	961.78	2.37	
9131.00	88.560	88.630	7389.28	1507.70	-1857.42	1055.75	1.01	
9226.00	88.070	87.570	7392.08	1598.42	-1854.27	1150.65	1.23	



Actual Wellpath Report

FAIRVIEW 3 AWP

Page 4 of 7



REFERENCE WELLPATH IDENTIFICATION

Operator	EXTRACTION OIL & GAS	Slot	SLOT#03 FAIRVIEW 3 (1855'FSL & 474'FWL, SEC.05)
Area	COLORADO	Well	FAIRVIEW 3
Field	WELD COUNTY (NAD83/TRUE NORTH)	Wellbore	FAIRVIEW 3 AWB
Facility	SEC.05-T02N-R68W		

WELLPATH DATA (152 stations)

MD [ft]	Inclination [°]	Azimuth [°]	TVD [ft]	Vert Sect [ft]	North [ft]	East [ft]	DLS [°/100ft]	Comments
9321.00	89.530	91.100	7394.07	1689.74	-1853.17	1245.61	4.02	
9415.00	89.620	91.670	7394.76	1780.99	-1855.44	1339.58	0.61	
9510.00	89.090	90.130	7395.83	1873.00	-1856.93	1434.56	1.71	
9604.00	87.980	89.730	7398.24	1963.62	-1856.82	1528.53	1.26	
9699.00	90.370	89.340	7399.60	2055.05	-1856.05	1623.51	2.55	
9793.00	90.590	90.790	7398.82	2145.75	-1856.16	1717.50	1.56	
9887.00	89.750	91.580	7398.54	2236.92	-1858.10	1811.48	1.23	
9982.00	91.780	90.480	7397.27	2328.99	-1859.81	1906.45	2.43	
10077.00	90.940	90.260	7395.01	2420.77	-1860.42	2001.42	0.91	
10171.00	90.850	90.040	7393.55	2511.50	-1860.67	2095.41	0.25	
10266.00	89.090	90.970	7393.60	2603.36	-1861.50	2190.40	2.10	
10360.00	88.510	91.670	7395.56	2694.56	-1863.67	2284.35	0.97	
10455.00	88.420	91.500	7398.11	2786.83	-1866.30	2379.28	0.20	
10549.00	88.030	91.580	7401.02	2878.10	-1868.82	2473.20	0.42	
10644.00	89.700	91.100	7402.90	2970.29	-1871.04	2568.15	1.83	
10739.00	89.790	90.970	7403.33	3062.37	-1872.76	2663.14	0.17	
10834.00	89.350	89.030	7404.04	3154.01	-1872.76	2758.13	2.09	
10929.00	89.570	90.620	7404.93	3245.57	-1872.47	2853.12	1.69	
11024.00	89.000	89.560	7406.12	3337.24	-1872.62	2948.11	1.27	
11119.00	89.840	92.200	7407.08	3429.25	-1874.08	3043.09	2.92	
11214.00	90.010	91.850	7407.21	3521.72	-1877.43	3138.03	0.41	
11308.00	89.220	90.350	7407.84	3612.85	-1879.24	3232.00	1.80	
11403.00	88.910	88.720	7409.39	3704.28	-1878.47	3326.98	1.75	
11498.00	89.700	91.010	7410.54	3795.85	-1878.24	3421.97	2.55	
11592.00	91.740	91.360	7409.36	3887.01	-1880.19	3515.94	2.20	
11687.00	91.030	90.920	7407.06	3979.11	-1882.08	3610.89	0.88	
11782.00	88.070	86.210	7407.81	4070.06	-1879.70	3705.82	5.86	
11877.00	87.760	89.690	7411.27	4160.68	-1876.30	3800.68	3.68	
11971.00	88.860	90.700	7414.04	4251.40	-1876.62	3894.64	1.59	
12066.00	88.110	90.040	7416.55	4343.17	-1877.24	3989.60	1.05	
12161.00	88.110	90.040	7419.68	4434.79	-1877.30	4084.55	0.00	
12256.00	90.850	91.230	7420.55	4526.69	-1878.35	4179.53	3.14	
12350.00	90.370	91.450	7419.54	4617.92	-1880.55	4273.50	0.56	
12446.00	90.410	92.030	7418.89	4711.25	-1883.47	4369.45	0.61	
12541.00	91.160	91.760	7417.59	4803.66	-1886.61	4464.39	0.84	
12635.00	90.720	91.500	7416.05	4895.00	-1889.28	4558.34	0.54	
12730.00	90.540	91.630	7415.00	4987.29	-1891.88	4653.30	0.23	
12825.00	90.630	91.410	7414.03	5079.56	-1894.40	4748.26	0.25	
12920.00	88.820	89.820	7414.49	5171.46	-1895.42	4843.24	2.54	
13014.00	88.860	89.030	7416.39	5261.87	-1894.47	4937.22	0.84	
13110.00	88.110	88.020	7418.93	5353.77	-1892.00	5033.15	1.31	
13204.00	88.950	89.690	7421.34	5443.90	-1890.13	5127.10	1.99	
13299.00	89.040	88.320	7423.01	5535.08	-1888.48	5222.07	1.44	
13394.00	89.930	90.390	7423.86	5626.43	-1887.41	5317.05	2.37	
13489.00	89.880	89.820	7424.02	5718.12	-1887.58	5412.05	0.60	



Actual Wellpath Report

FAIRVIEW 3 AWP

Page 5 of 7



REFERENCE WELLPATH IDENTIFICATION

Operator	EXTRACTION OIL & GAS	Slot	SLOT#03 FAIRVIEW 3 (1855'FSL & 474'FWL, SEC.05)
Area	COLORADO	Well	FAIRVIEW 3
Field	WELD COUNTY (NAD83/TRUE NORTH)	Wellbore	FAIRVIEW 3 AWB
Facility	SEC.05-T02N-R68W		

WELLPATH DATA (152 stations)

MD [ft]	Inclination [°]	Azimuth [°]	TVD [ft]	Vert Sect [ft]	North [ft]	East [ft]	DLS [°/100ft]	Comments
13584.00	90.230	90.350	7423.93	5809.80	-1887.72	5507.05	0.67	
13678.00	89.930	90.660	7423.80	5900.70	-1888.55	5601.05	0.46	
13772.00	88.950	90.440	7424.72	5991.61	-1889.45	5695.04	1.07	
13868.00	89.260	90.220	7426.22	6084.35	-1890.01	5791.02	0.40	
13962.00	89.840	90.620	7426.95	6175.20	-1890.69	5885.02	0.75	
14056.00	89.750	90.620	7427.29	6266.15	-1891.71	5979.01	0.10	
14151.00	89.350	88.850	7428.04	6357.67	-1891.27	6074.00	1.91	
14245.00	89.970	89.290	7428.59	6447.93	-1889.75	6167.99	0.81	
14340.00	90.900	91.630	7427.87	6539.77	-1890.51	6262.97	2.65	
14435.00	90.540	90.440	7426.68	6631.84	-1892.23	6357.95	1.31	
14530.00	90.190	90.310	7426.07	6723.65	-1892.85	6452.95	0.39	
14624.00	89.530	88.760	7426.30	6814.12	-1892.08	6546.94	1.79	
14719.00	89.350	91.850	7427.23	6905.88	-1892.59	6641.92	3.26	
14814.00	89.000	91.890	7428.60	6998.28	-1895.69	6736.86	0.37	
14909.00	89.170	92.030	7430.12	7090.72	-1898.94	6831.79	0.23	
15018.00	88.690	92.110	7432.15	7196.82	-1902.87	6940.70	0.45	BAKER DRILLED USING 3RD PARTY MWD-LAST SURVEY (18'FSL & 2121'FWL, SEC.05)
15082.00	88.690	92.110	7433.62	7259.12	-1905.23	7004.64	0.00	BAKER DRILLED USING 3RD PARTY MWD-PTB (16'FSL & 2185'FWLM SEC.05)

HOLE & CASING SECTIONS - Ref Wellbore: FAIRVIEW 3 AWB Ref Wellpath: FAIRVIEW 3 AWP

String/Diameter	Start MD [ft]	End MD [ft]	Interval [ft]	Start TVD [ft]	End TVD [ft]	Start N/S [ft]	Start E/W [ft]	End N/S [ft]	End E/W [ft]
13.5in Open Hole	20.00	1542.00	1522.00	20.00	1541.36	0.00	0.00	30.29	7.65
9.625in Casing Surface	20.00	1542.00	1522.00	20.00	1541.36	0.00	0.00	30.29	7.65
7.875in Open Hole	1542.00	15082.00	13540.00	1541.36	7433.62	30.29	7.65	-1905.23	7004.64
5.5in Casing Production	20.00	15082.00	15062.00	20.00	7433.62	0.00	0.00	-1905.23	7004.64

TARGETS

Name	TVD [ft]	North [ft]	East [ft]	Grid East [US ft]	Grid North [US ft]	Latitude	Longitude	Shape
SEC.04-T02N-R68W	2.00	-1.01	55.90	3130047.27	1303569.24	40°09'56.722"N	105°02'04.801"W	polygon
SEC.05-T02N-R68W	2.00	-1.01	55.90	3130047.27	1303569.24	40°09'56.722"N	105°02'04.801"W	polygon
FAIRVIEW 3 BHL ON PLAT (0'FSL & 2216'FWL, SEC.05)	7230.00	-1920.99	7035.73	3137036.77	1301685.98	40°09'37.739"N	105°00'34.902"W	point
FAIRVIEW 3 LANDING POINT (0'FSL & 460'FWL, SEC.05)	7230.00	-1854.23	-48.65	3129952.45	1301715.58	40°09'38.408"N	105°02'06.148"W	point
SEC.04/05-T02B-R68W BOTTOM HALF SECTIONS	7682.00	-1.01	55.90	3130047.27	1303569.24	40°09'56.722"N	105°02'04.801"W	polygon
SEC.04/05-T02N-R68W 460'SETBACK	7682.00	-1.01	55.90	3130047.27	1303569.24	40°09'56.722"N	105°02'04.801"W	polygon



Actual Wellpath Report

FAIRVIEW 3 AWP

Page 6 of 7



REFERENCE WELLPATH IDENTIFICATION

Operator	EXTRACTION OIL & GAS	Slot	SLOT#03 FAIRVIEW 3 (1855'FSL & 474'FWL, SEC.05)
Area	COLORADO	Well	FAIRVIEW 3
Field	WELD COUNTY (NAD83/TRUE NORTH)	Wellbore	FAIRVIEW 3 AWB
Facility	SEC.05-T02N-R68W		

WELLPATH COMPOSITION - Ref Wellbore: FAIRVIEW 3 AWB Ref Wellpath: FAIRVIEW 3 AWP

Start MD [ft]	End MD [ft]	Positional Uncertainty Model	Log Name/Comment	Wellbore
20.00	1475.00	Custom NaviTrak (Standard) (Rockies 0.03Gt model)	BHI MWD/NAVITRAK (STD) 13.5" HOLE <202-1475>	FAIRVIEW 3 AWB
1475.00	15018.00	ISCWSA MWD, Rev. 3 (Standard)	BAKER HANDS DRILLED USING 3RD PARTY MWD <1619-15018>	FAIRVIEW 3 AWB
15018.00	15082.00	Blind Drilling (std)	Projection to bit	FAIRVIEW 3 AWB



Actual Wellpath Report

FAIRVIEW 3 AWP

Page 7 of 7



REFERENCE WELLPATH IDENTIFICATION

Operator	EXTRACTION OIL & GAS	Slot	SLOT#03 FAIRVIEW 3 (1855'FSL & 474'FWL, SEC.05)
Area	COLORADO	Well	FAIRVIEW 3
Field	WELD COUNTY (NAD83/TRUE NORTH)	Wellbore	FAIRVIEW 3 AWB
Facility	SEC.05-T02N-R68W		

WELLPATH COMMENTS

MD [ft]	Inclination [°]	Azimuth [°]	TVD [ft]	Comment
202.00	2.290	115.900	201.95	FIRST BHI MWD SURVEY
1475.00	1.610	32.940	1474.39	LAST BHI MWD SURVEY
1619.00	1.940	51.750	1618.32	BAKER DRILLED USING 3RD PARTY MWD-FIRST SURVEY
8059.00	78.212	88.363	7347.12	CROSSED 460'SETBACK (15'FSL & 460'FWL, SEC.04)
8183.00	87.190	90.970	7362.91	LANDING POINT (16'FSL & 583'FWL, SEC.04)
15018.00	88.690	92.110	7432.15	BAKER DRILLED USING 3RD PARTY MWD-LAST SURVEY (18'FSL & 2121'FWL, SEC.05)
15082.00	88.690	92.110	7433.62	BAKER DRILLED USING 3RD PARTY MWD-PTB (16'FSL & 2185'FWLM SEC.05)